

project:

Forest Meadows

25W462 75th Street
Naperville, Illinois

sheet description:

Final Landscape Details & Notes

owner:

Green Valley 75, LLC.
8 S. 330 College Road
Naperville, Illinois 60540

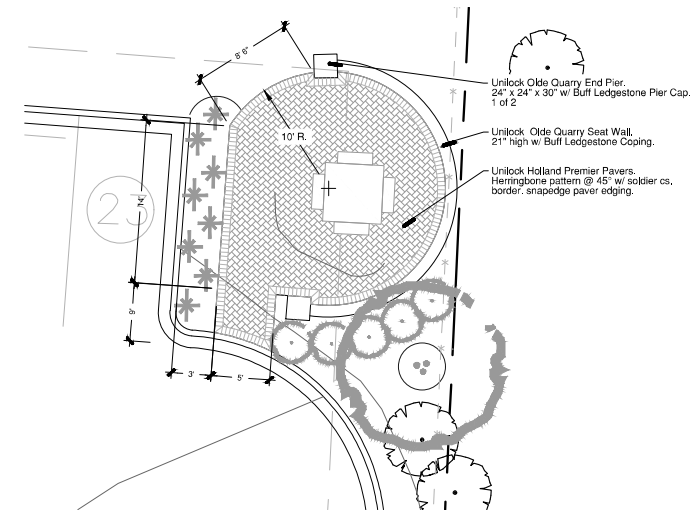


revisions:	date	description
1	5/24/2023	Final Plan
2	3/10/2023	Per City Review Comments dated 2/23/2023

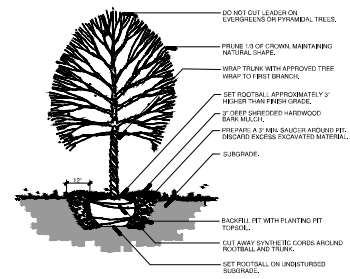
original issue date: **20 January 2023**

drawn by:
checked by:
project no.: **22024**
sheet no.:

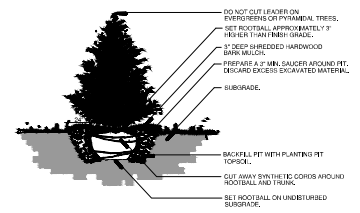
L.101



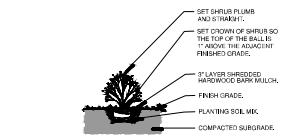
E Paver Sitting Area Detail
scale: 1" = 5' 0"



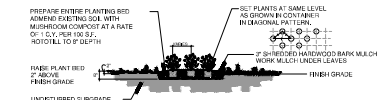
A Typical Tree Planting Detail
NTS



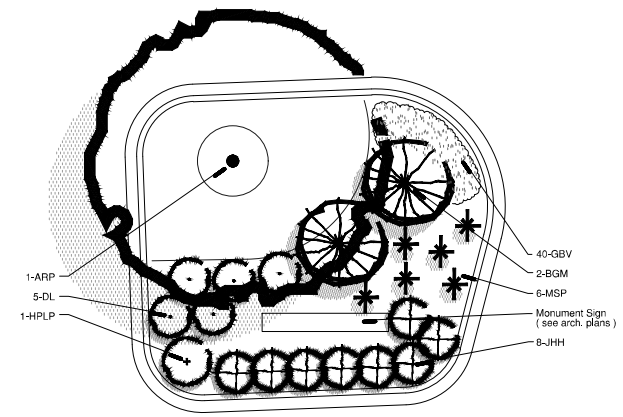
B Typical Evergreen Planting Detail
NTS



C Typical Shrub Planting Detail
NTS



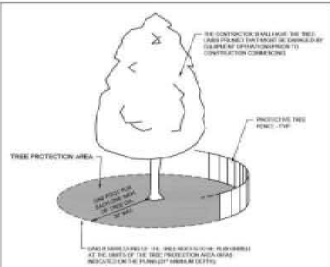
D Typical Perennial Planting Detail
NTS



F Entrance Sign Island Detail
scale: 1" = 5' 0"

Tree Inventory Data :

Key #	Common Name	DBH	Condition	Remarks	S/R	Key #	Common Name	DBH	Condition	Remarks	S/R
101	Spruce	18"	Fair		R	154	Siberian Elm	14"	Fair		S
102	Silver Maple	36"	Good		R	155	Red Oak	20"	Good		S
103	White Birch	3x12"	Poor		R	156	Boxelder	8"	Dead		S
104	Boxelder	24"	Poor	Lowest	R	157	Black Walnut	10"	Fair		S
105	Mission Arbutus	20"	Fair		S	158	Black Cherry	8"	Fair		S
106	Mission Arbutus	20"	Fair		S	159	Black Cherry	8"	Fair		S
107	Mission Arbutus	20"	Fair		S	160	Hackberry	10"	Good		S
108	Mission Arbutus	20"	Fair		S	161	Black Cherry	18"	Fair		S
109	Mission Arbutus	20"	Fair		S	162	Red Oak	18"	Fair		S
110	Mission Arbutus	20"	Fair		S	163	Red Oak	24"	Good		S
111	Mission Arbutus	20"	Fair		S	164	Siberian Elm	14"	Fair		S
112	Mission Arbutus	20"	Fair		S	165	Black Walnut	14"	Fair		S
113	Mission Arbutus	20"	Fair		S	166	Black Walnut	18"	Fair		S
114	Mission Arbutus	20"	Fair		S	167	Black Walnut	8"	Fair		S
115	Mission Arbutus	20"	Fair		S	168	Black Cherry	14"	Fair		S
116	Mission Arbutus	20"	Fair		S	169	Black Cherry	8"	Poor		S
117	Mission Arbutus	20"	Fair		S	170	Hackberry	10"	Fair		S
118	Mission Arbutus	20"	Fair		S	171	Black Cherry	8"	Fair		S
119	Mission Arbutus	20"	Fair		S	172	Hackberry	5"	Good		S
120	Mission Arbutus	20"	Fair		S	173	Hackberry	40"	Excellent	Key Tree	S
121	Mission Arbutus	20"	Fair		S	174	Black Walnut	8"	Fair		S
122	Mission Arbutus	20"	Fair		S	175	Osage Orange	15"	Fair		R
123	Mission Arbutus	20"	Fair		S	176	Osage Orange	MT	Dead		R
124	Mission Arbutus	20"	Fair		S	177	Osage Orange	MT	Poor		S
125	Mission Arbutus	20"	Fair		S	178	Buckhorn	5"	Poor		S
126	Mission Arbutus	20"	Fair		S	179	Osage Orange	MT	Fair		S
127	Mission Arbutus	20"	Fair		S	180	Osage Orange	MT	Fair		S
128	Mission Arbutus	20"	Fair		S	181	Osage Orange	20"	Fair		S
129	Mission Arbutus	20"	Fair		S	182	Osage Orange	20"	Fair		S
130	Mission Arbutus	20"	Fair		S	183	Osage Orange	MT	Fair		S
131	Mission Arbutus	20"	Fair		S	184	Osage Orange	MT	Fair		S
132	Mission Arbutus	20"	Fair		S	185	Osage Orange	12"	Fair		S
133	Mission Arbutus	20"	Fair		S	186	Osage Orange	18"	Poor		S
134	Mission Arbutus	20"	Fair		S	187	Osage Orange	15"	Poor		S
135	Mission Arbutus	20"	Fair		S	188	Osage Orange	15"	Fair		S
136	Black Cherry	14"	Fair		S	189	Osage Orange	15"	Fair		S
137	Black Cherry	8"	Poor		S	190	Osage Orange	MT	Fair		R
138	Black Cherry	8"	Poor		S	191	Osage Orange	12"	Fair		S
139	Hackberry	12"	Good		S	192	Osage Orange	14"	Fair		S
140	Spruce	20"	Poor		R	193	Osage Orange	38"	Fair		S
141	Black Cherry	20"	Fair		R	194	Osage Orange	15"	Fair		S
142	Siberian Elm	36"	Fair		R	195	Osage Orange	24"	Fair		R
143	Spruce	2"	Dead		R	196	Osage Orange	1.5"	Fair		R
144	Spruce	24"	Poor		R	197	Osage Orange	30"	Fair		S
145	Spruce	12"	Good		R	198	Osage Orange	18"	Poor		S
146	Silver Maple	24"	Poor		R	199	Osage Orange	24"	Fair		S
147	Silver Maple	4x10"	Poor		R	200	Osage Orange	15"	Poor		S
148	Osage Orange	MT	Poor		R	201	Osage Orange	15"	Fair		S
149	Buckhorn	MT	Fair		S	202	Osage Orange	15"	Poor		S
150	Black Cherry	2x12"	Poor		S	203	Osage Orange	15"	Poor		S
151	Black Cherry	8"	Good		S	204	Osage Orange	12"	Dead		S
152	Red Oak	36"	Good		S	205	Osage Orange	15"	Fair		S
153	Red Oak	12"	Good		S	206	Black Cherry	18"	Poor		R



NOTES:

1. TREE PROTECTION AREAS SHALL BE ESTABLISHED AROUND A TREE A DISTANCE OF ONE FOOT FROM EACH AND EVERY TREE CORNER AND TO MAINTAIN AN OPEN SPACE.
2. UNLESS OTHERWISE SPECIFIED, ALL TREE PROTECTION AREAS SHALL BE ESTABLISHED WITH A TREE PROTECTION FENCE. THE FENCE SHALL BE CONSIDERED AS A BARRIER TO PROTECT THE TREE FROM DAMAGE BY MACHINERY, VEHICLES, AND OTHER UNDESIRABLE ACTS.
3. BEFORE ANY CONSTRUCTION OR DEMOLITION WORK BEGINS, THE TREE PROTECTION AREAS SHALL BE ESTABLISHED AND MAINTAINED THROUGHOUT THE PROJECT. ANY CHANGES TO THE TREE PROTECTION AREAS SHALL BE APPROVED BY THE TREE PROTECTION AREA DESIGNER BEFORE ANY WORK BEGINS.
4. ANY DAMAGE TO THE TREE PROTECTION AREAS SHALL BE REPAIRED BY THE TREE PROTECTION AREA DESIGNER AT THE OWNER'S EXPENSE.
5. ALL TREES TO BE REMOVED SHALL BE REMOVED BY THE TREE PROTECTION AREA DESIGNER WITHIN THE TREE PROTECTION AREA. THE TREE PROTECTION AREA DESIGNER SHALL BE RESPONSIBLE FOR OBTAINING ALL NECESSARY PERMITS AND APPROVALS FROM THE CITY OF NAPERVILLE AND THE ILLINOIS DEPARTMENT OF NATURAL RESOURCES. ALL REMOVAL SHALL BE IN ACCORDANCE WITH THE ILLINOIS TREE REMOVAL ACT (230 ILCS 10/1-10/10).
6. IF A TREE IS DAMAGED BY ANY MEANS, THE TREE PROTECTION AREA DESIGNER SHALL BE NOTIFIED IMMEDIATELY. THE TREE PROTECTION AREA DESIGNER SHALL BE RESPONSIBLE FOR OBTAINING ALL NECESSARY PERMITS AND APPROVALS FROM THE CITY OF NAPERVILLE AND THE ILLINOIS DEPARTMENT OF NATURAL RESOURCES. ALL REPAIRS SHALL BE IN ACCORDANCE WITH THE ILLINOIS TREE REMOVAL ACT (230 ILCS 10/1-10/10).

City of Naperville
STANDARD
DETAIL
790.10

Existing Tree Survey Date :

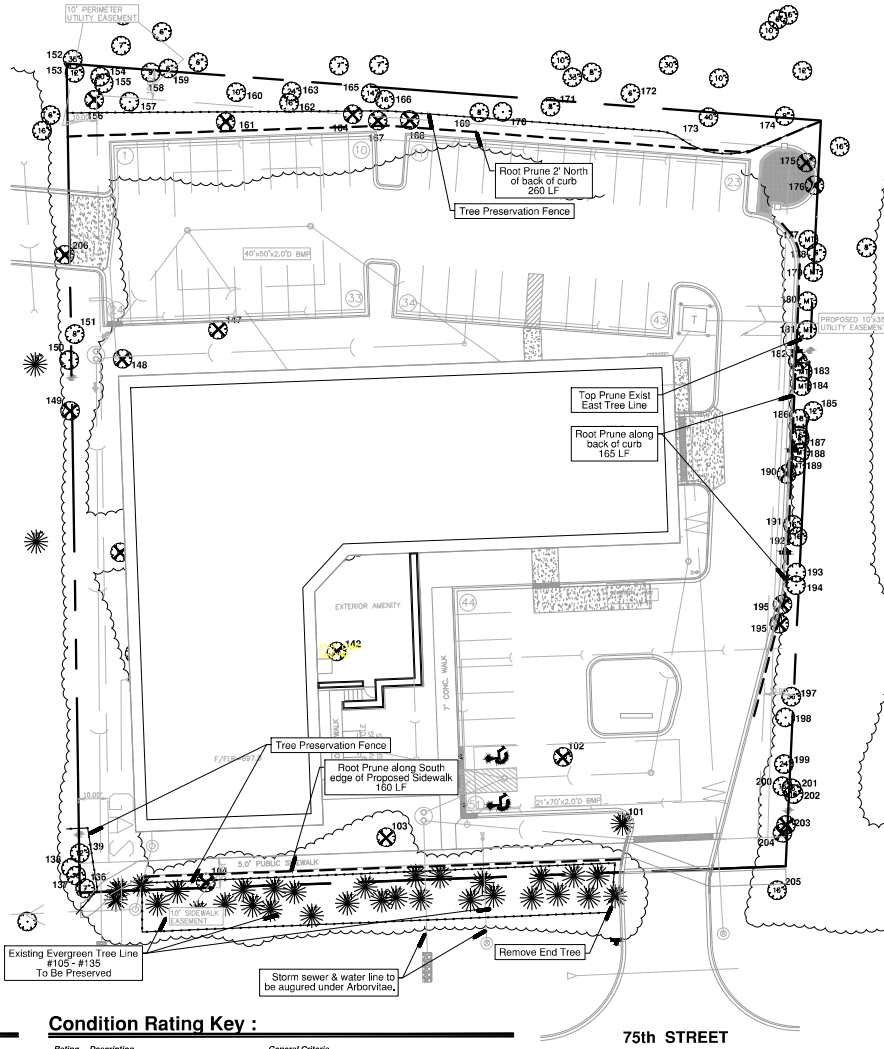
Existing tree inventory and rating completed by Signature Design Group on December 12, 2022. Location and Tree Sizing Survey prepared by: Kozl Engineering Services and dated 11.28.2022

Legend :

- 101 (Tree with key) - Existing Tree w/ Key #
- 101 (Tree with 'X') - Existing Tree to be Preserved
- 101 (Tree with 'X' and circle) - Existing Tree to be Removed
- △ - Tree Preservation Fencing
- △ - Root Pruning

Condition Rating Key :

Rating	Description	General Criteria
5	Excellent	The tree is typical of the species and / or has less than 10% deadwood in the crown that is attributable to normal causes, has no other observed problems, and requires no remedial action.
4	Good	The tree is typical of the species and / or has less than 20% deadwood in the crown, only 1 or 2 minor problems that are easily corrected with normal care.
3	Fair	The tree is typical of the species and / or has less than 40% deadwood in the crown, only 1 or 2 minor problems that are not immediately lethal to the tree and no significant decay or significant decay or structural problems, but the tree must have remedial care above normal care in order to minimize the impact of future stress and to ensure continued health.
2	Poor	The tree is not typical of the species and / or has over 50% deadwood in the crown, major decay or structural problems, is hazardous or is severely involved with insects, disease, or other problems that even if aggressively corrected would not result in the long term survival of the tree.
1	Dead	Less than 10% of the tree shows signs of life.



Land Planning
Landscape Architecture
Environmental Site Design

project:

**Forest
Meadows**

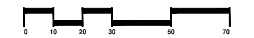
25W462 75th Street
Naperville, Illinois

sheet description:

**Existing
Tree Survey**

owner:

Green Valley 75, LLC.
8 S. 330 College Road
Naperville, Illinois 60540



north: ↑ scale: 1" = 20' 0"

revisions:
3.10.2023 Final Plan
3.10.2023 Per City Review Comments dated 2/23/2023
original issue date: 6 January 2023

drawn by:
checked by:
project no.: 22024
sheet no.:

TS.100