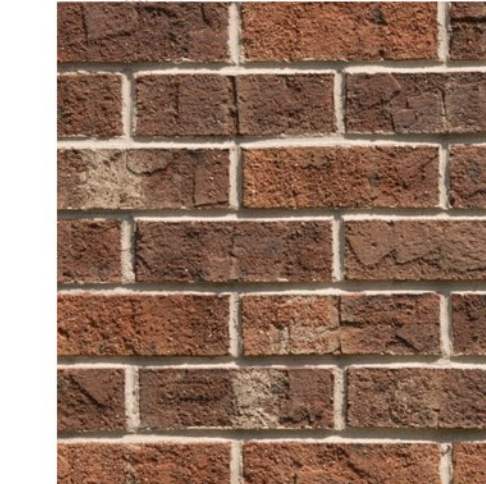


**MATERIAL KEY:**  
 BK-1: TRIANGLE MODULAR BRICK (OR EQUAL) IN COLOR "GEORGIAN"  
 BK-2: TRIANGLE MODULAR BRICK (OR EQUAL) IN COLOR "HARPER CREEK"  
 CMU-1: ESCHOLON SPLITFACE BLOCK VENEER (OR EQUAL) "NATURAL"  
 CANVAS AWNING: "ERIN GREEN" BY SUNBRELLA  
 PT-12: SW6644 "CHAMPAGNE"

- GENERAL NOTES:**
1. PROVIDE DRIP CAP OVER ALL MAN DOORS SEE DETAIL 1C/A8
  2. PAINT ALL EXPOSED LINTELS & JAMBS TO MATCH ADJACENT BUILDING COLOR.
  3. SEE ELECTRICAL FOR SIGNAGE OPERATING TIME SETUP
  4. INSTALLATION OF BUILDING SIGNS AND STREET SIGN BY SIGN VENDOR, G.C. TO PROVIDE WIRING. REFER ELECTRICAL.
  5. REFER SHEET A8 FOR PAINT COLOR KEY.
  6. ANY EXTERIOR CONSTRUCTION JOINT, EXPANSION JOINT, AND CRACK OF ABUTTING DISSIMILAR OR SAME MATERIALS MUST HAVE APPROPRIATE PRODUCT APPLIED TO PROVIDE AN AIR, MOISTURE, AND WATER TIGHT EXTERIOR. REFER TO SPECIFICATION SECTION 073200 FOR PRODUCTS.
  7. INTERMEDIATE SUPPORTS FOR ALL EXTERIOR WALL LOUVER/VENT OPENINGS TO BE PROVIDED BY MBM.

PERCENTAGE OF GLAZING FOR EACH ELEVATION FROM 2'-0" TO 8'-0" PER DESIGN GUIDELINES:  
 NORTH - 37%  
 SOUTH - 52%  
 WEST - 42%  
 EAST - N/A

BK-1: TRIANGLE MODULAR BRICK "GEORGIAN"



BK-2: TRIANGLE NORMAN BRICK "HARPER CREEK"



CMU-1: ESCHOLON SPLITFACE CMU "NATURAL"



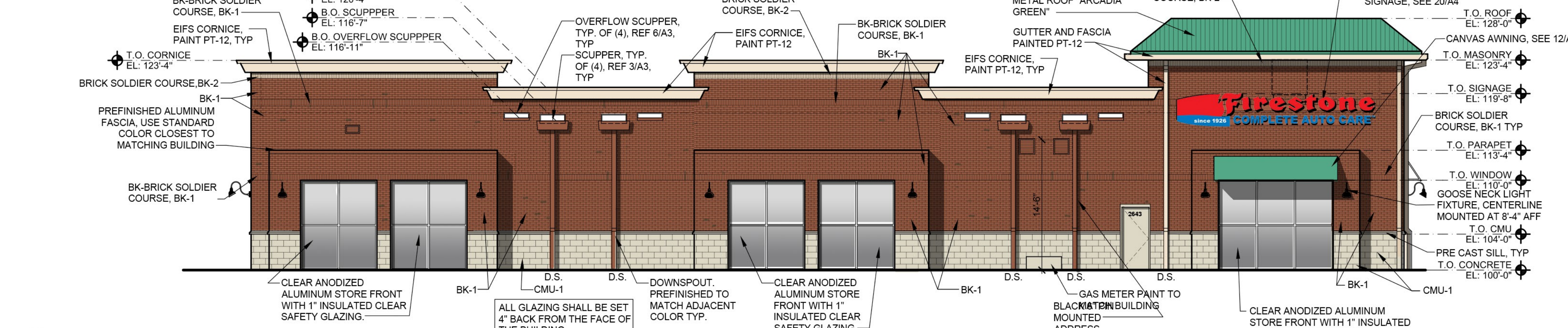
PT-12: "CHAMPAGNE" SW 6644



CANVAS AWNING: "ERIN GREEN" BY SUNBRELLA

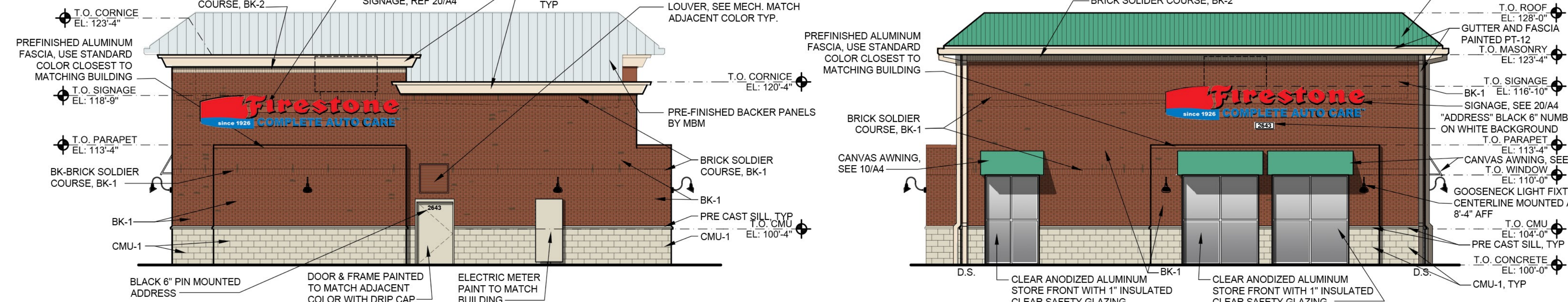
**1 (SOUTH) ELEVATION**

SCALE: 1/8"=1'-0"



**6 (NORTH) ELEVATION**

SCALE: 1/8"=1'-0"



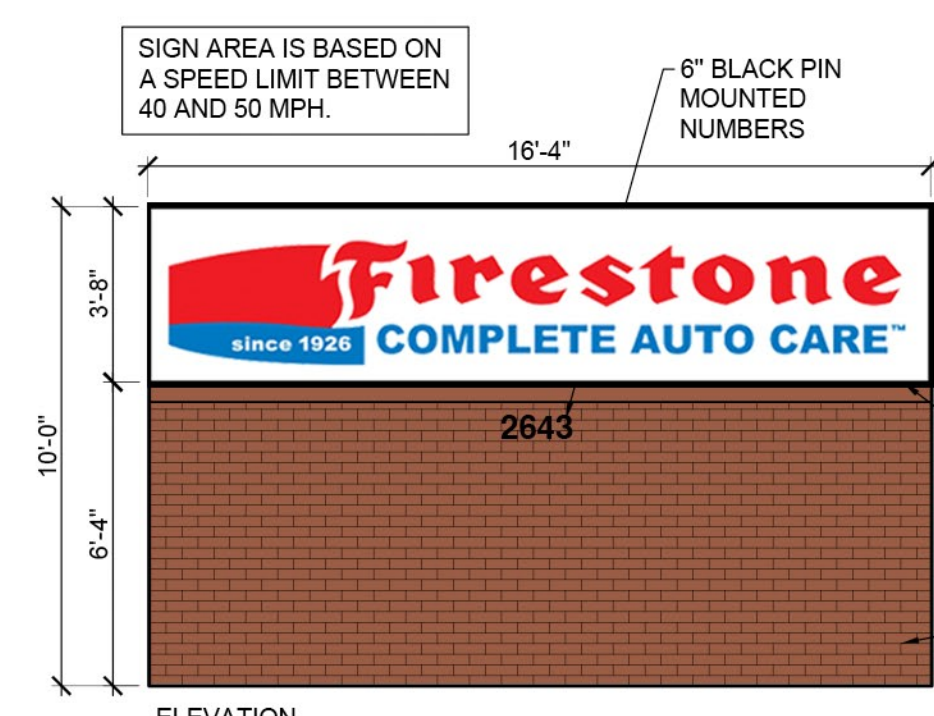
**11 (EAST) ELEVATION**

SCALE: 1/8"=1'-0"

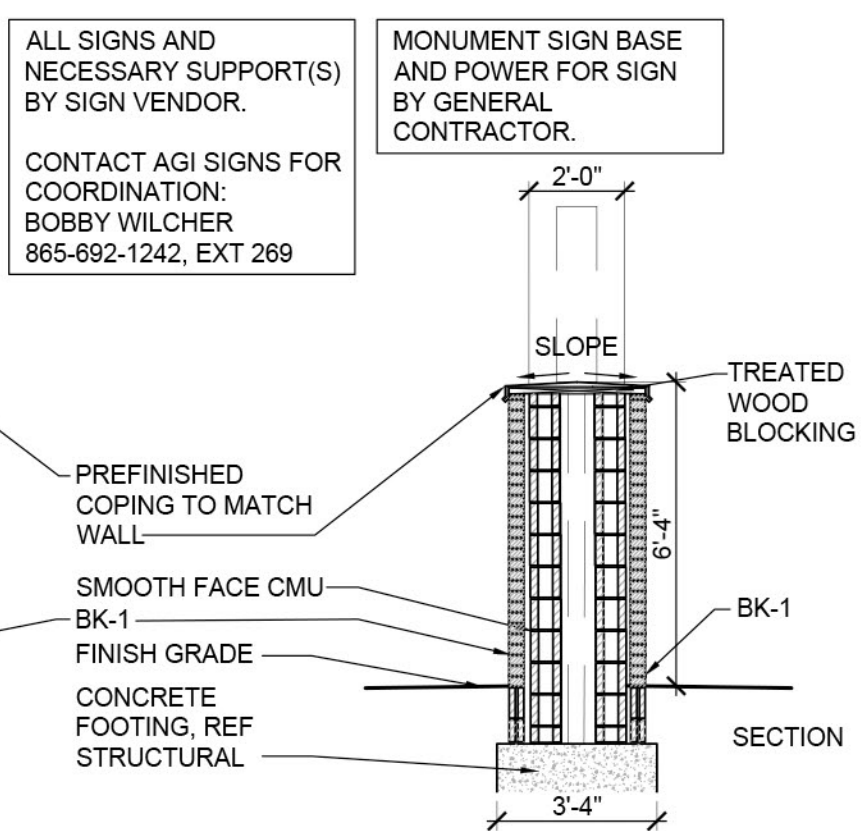


**16 (WEST) ELEVATION**

SCALE: 1/8"=1'-0"



MONUMENT SIGNAGE



INTERNALLY ILLUMINATED SIGNAGE ON RACEWAY, TYP. 30" WEARABLE LETTERSET



18" INTERNALLY ILLUMINATED SIGNAGE ON RACEWAY, TYP.

BUILDING SIGNAGE

**20 SIGNAGE DETAIL**

SCALE: 1/4"=1'-0"

CONSTRUCTION DOCUMENTS WILL BE BASED ON THE LATEST RELEASE OF THE PROTOTYPICAL DOCUMENTS ON LUCERNEX AT THE TIME OF CONSTRUCTION DOCUMENT AUTHORIZATION.  
 NOTE: THIS DRAWING IS FOR CONCEPTUAL PURPOSES ONLY. SITE INFORMATION WAS OBTAINED FROM THE CLIENTS DOCUMENTS; DESIGN MAY VARY.

PROJECT CONTACTS: \_\_\_\_\_ PHONE #: \_\_\_\_\_  
 ARCHITECT: OLIVIA GOOD (918) 587-8600  
 SGA DESIGN GROUP, P.C.  
 PROTOTYPE: SMALL ER

ZONE APPROVAL (BY/DATE):  
 VP. \_\_\_\_\_  
 CONT. \_\_\_\_\_  
 RM. \_\_\_\_\_  
 CM. \_\_\_\_\_  
 ENTITY ID: XXXXXXXX  
 SITE ID: XXXXXXXX  
 LEGACY ID: XXXXXXXX



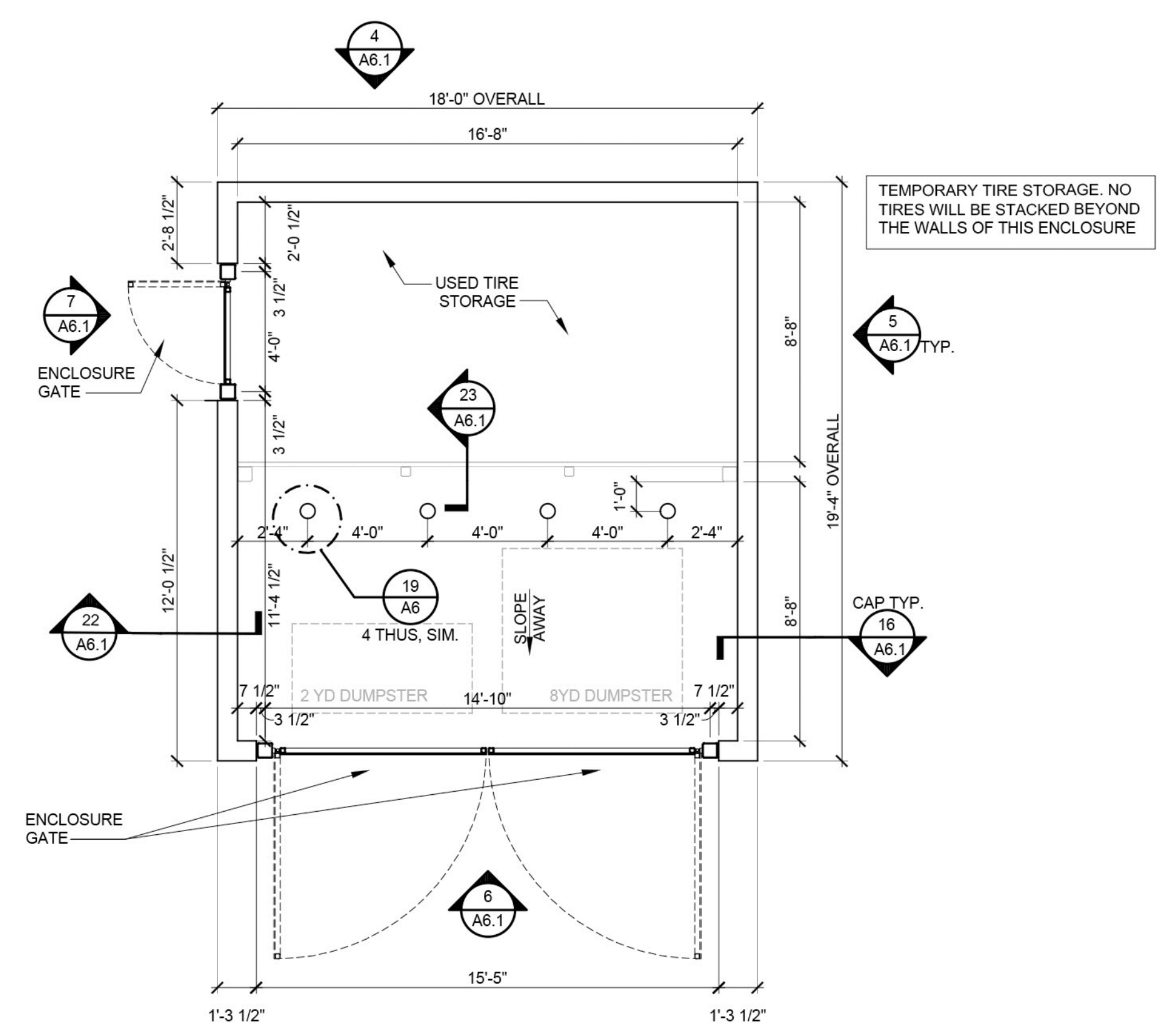
THIS DRAWING IS THE PROPERTY OF BRIDGESTONE RETAIL OPERATIONS, LLC AND IS LOANED ON THE EXPRESS CONDITION THAT IT IS NOT TO BE USED IN ANY WAY DELETTERIOUS TO THE INTERESTS OF BRIDGESTONE RETAIL OPERATIONS, LLC. THE ACCEPTANCE OF THIS DRAWING WILL BE CONSIDERED AS AN ACCEPTANCE OF THE FOREGOING CONDITION AND AS ADMISSION TO THE EXCLUSIVE OWNERSHIP IN AND TO THE DRAWING BY BRIDGESTONE RETAIL OPERATIONS, LLC.

HWY 59 & LEVERENZE RD.  
 NAPERVILLE, IL

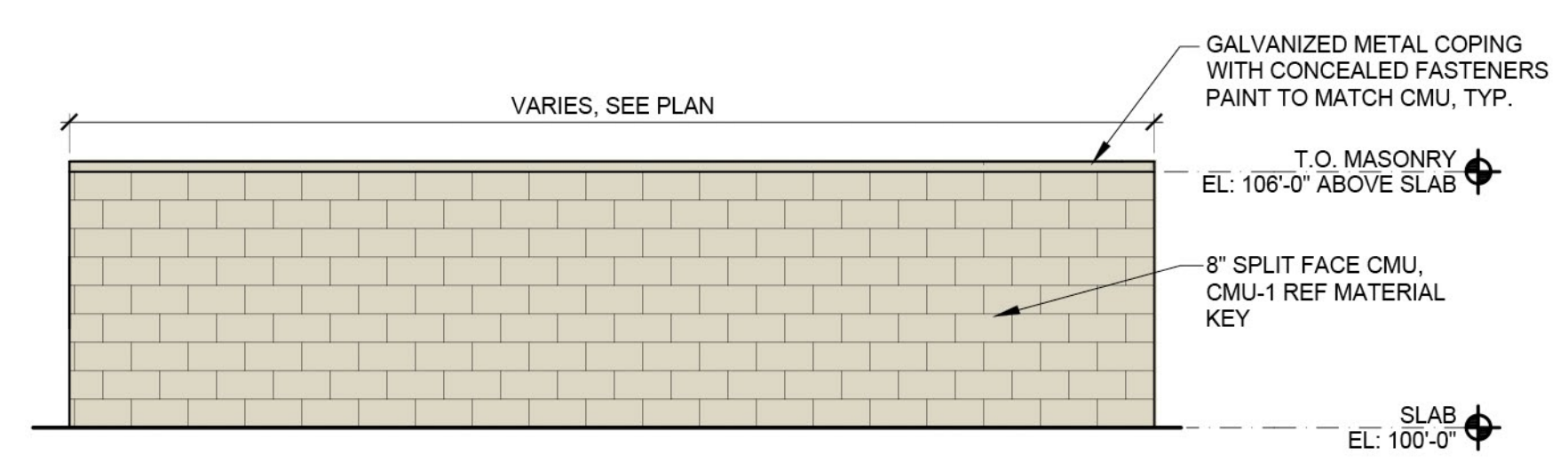
**SGA Design Group, P.C.**  
 1437 South Boulder, Suite 550  
 Tulsa, Oklahoma 74119.3609  
 p: 918.587.8600  
 f: 918.587.8601  
 www.sgadesigngroup.com

SHEET TITLE: EXTERIOR ELEVATIONS & DETAILS  
 SHEET NUMBER: PA4

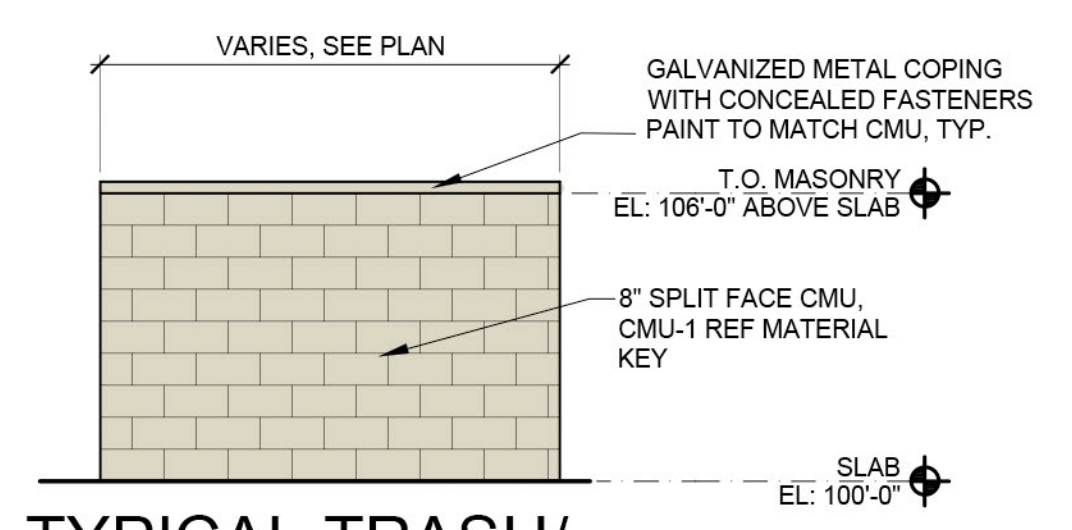
MATERIAL KEY:  
 CMU-1: ECHELON SPLIT FACE BLOCK (OR EQUAL) IN COLOR "NATURAL"



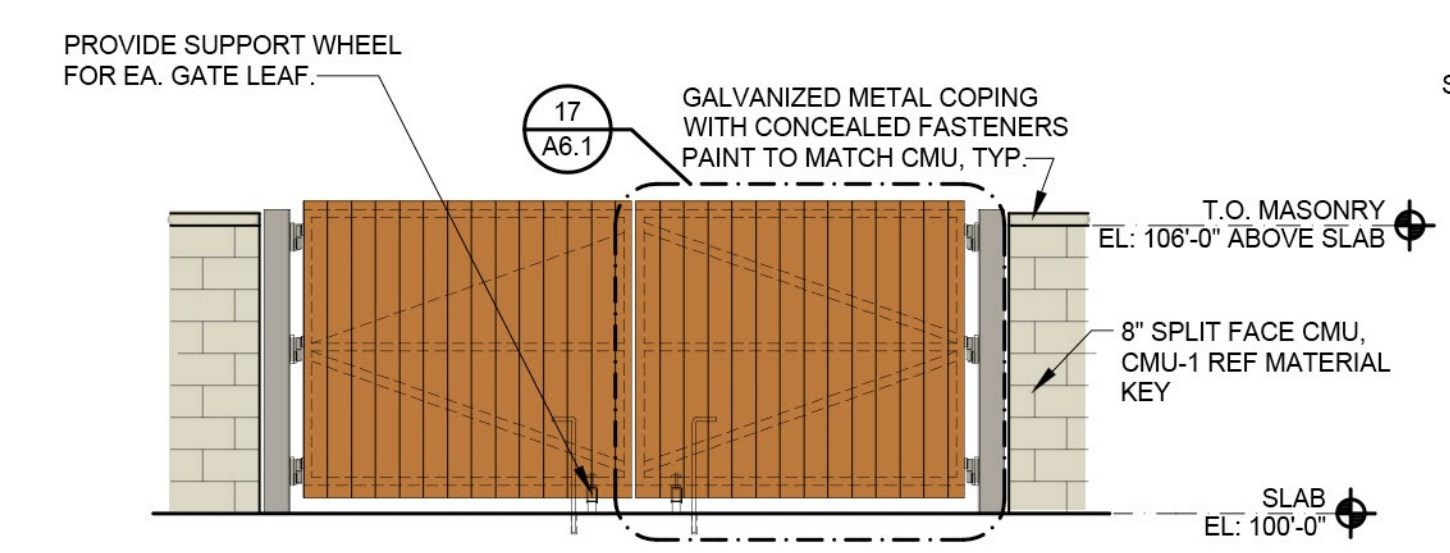
**1 TRASH/TIRE ENCLOSURE PLAN**  
 A6.1 SCALE: 1/4"=1'-0"



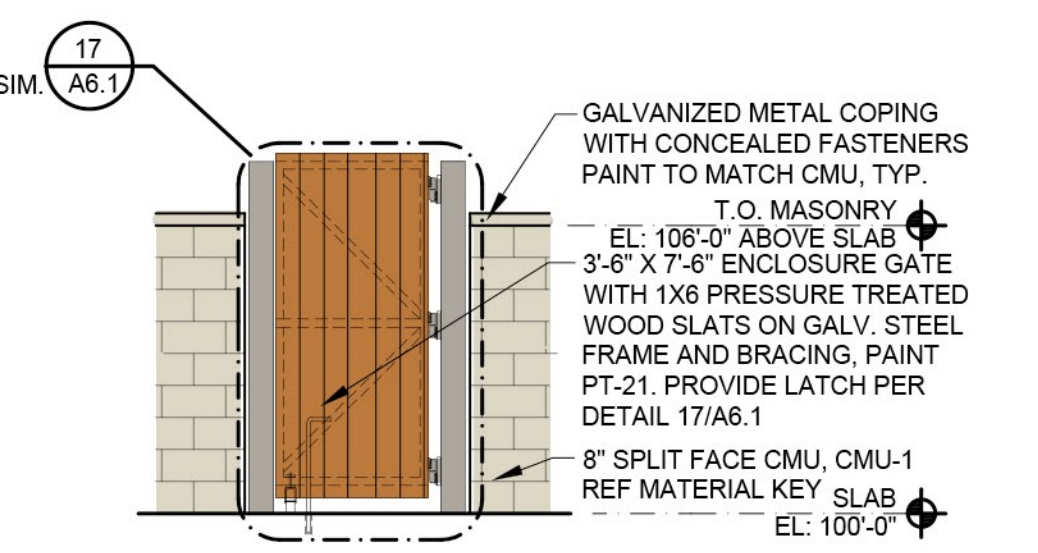
**4 TRASH/TIRE ENCLOSURE ELEV.**  
 A6.1 SCALE: 1/4"=1'-0"



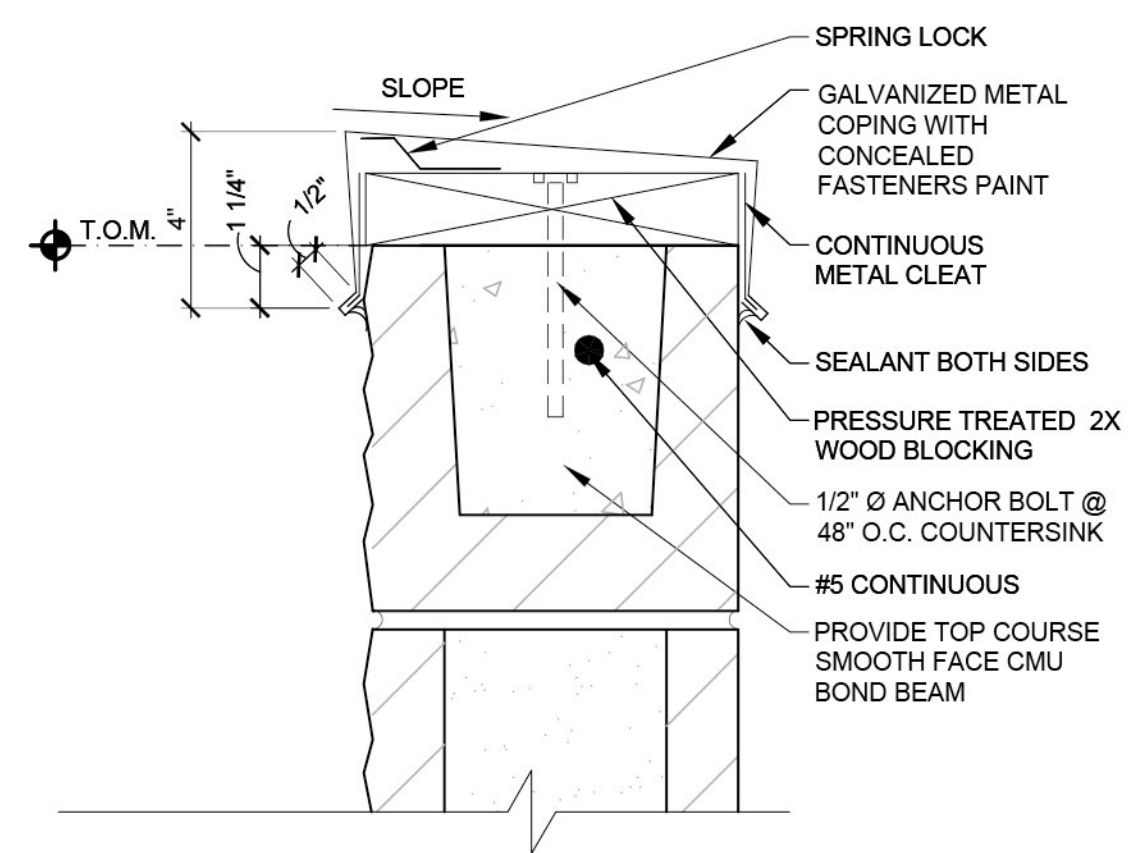
**5 TYPICAL TRASH/TIRE ENCLOSURE ELEV.**  
 A6.1 SCALE: 1/4"=1'-0"



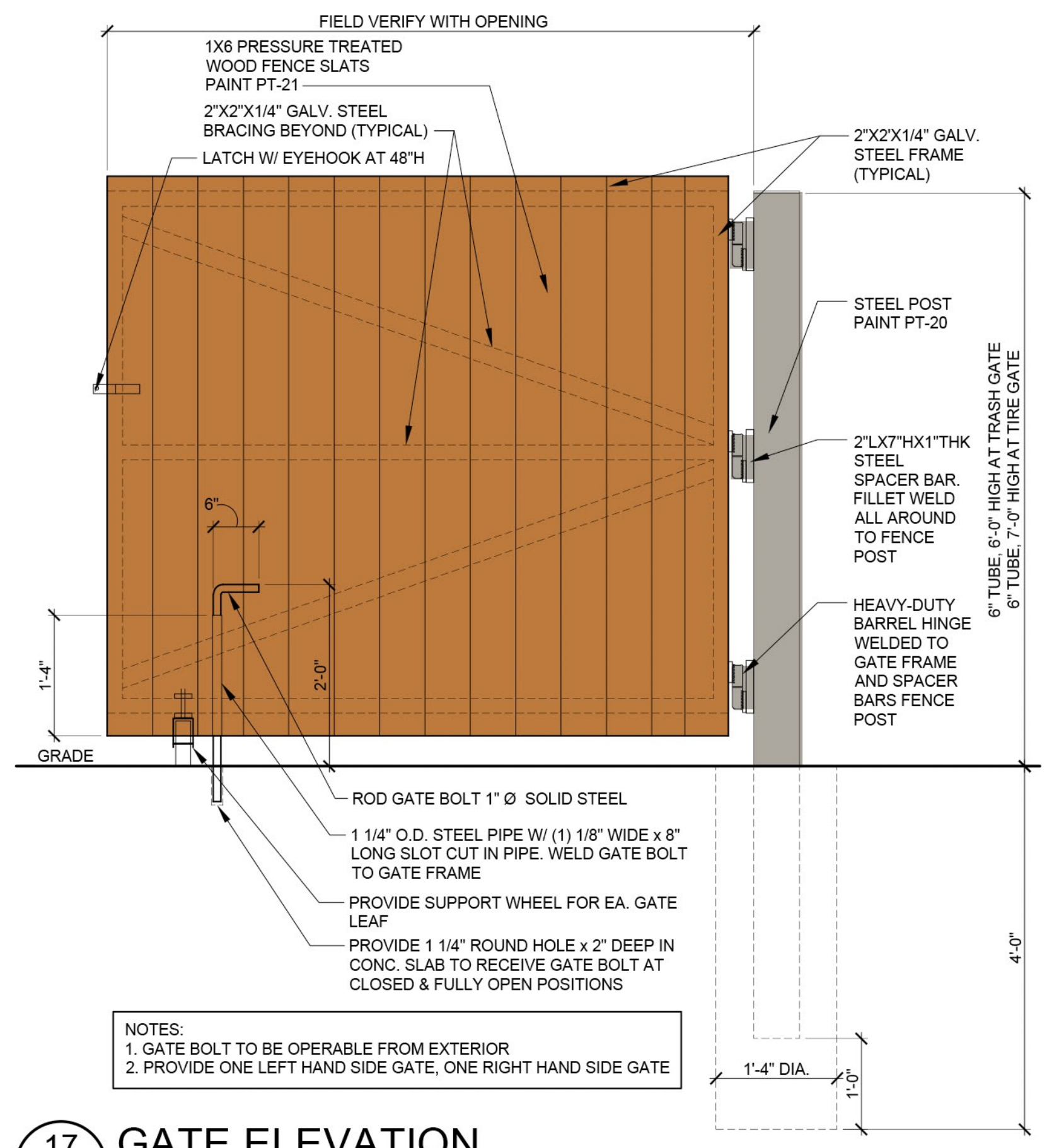
**6 TRASH/TIRE ENCLOSURE ELEV.**  
 A6.1 SCALE: 1/4"=1'-0"



**7 TRASH/TIRE ENCLOSURE ELEV.**  
 A6.1 SCALE: 1/4"=1'-0"

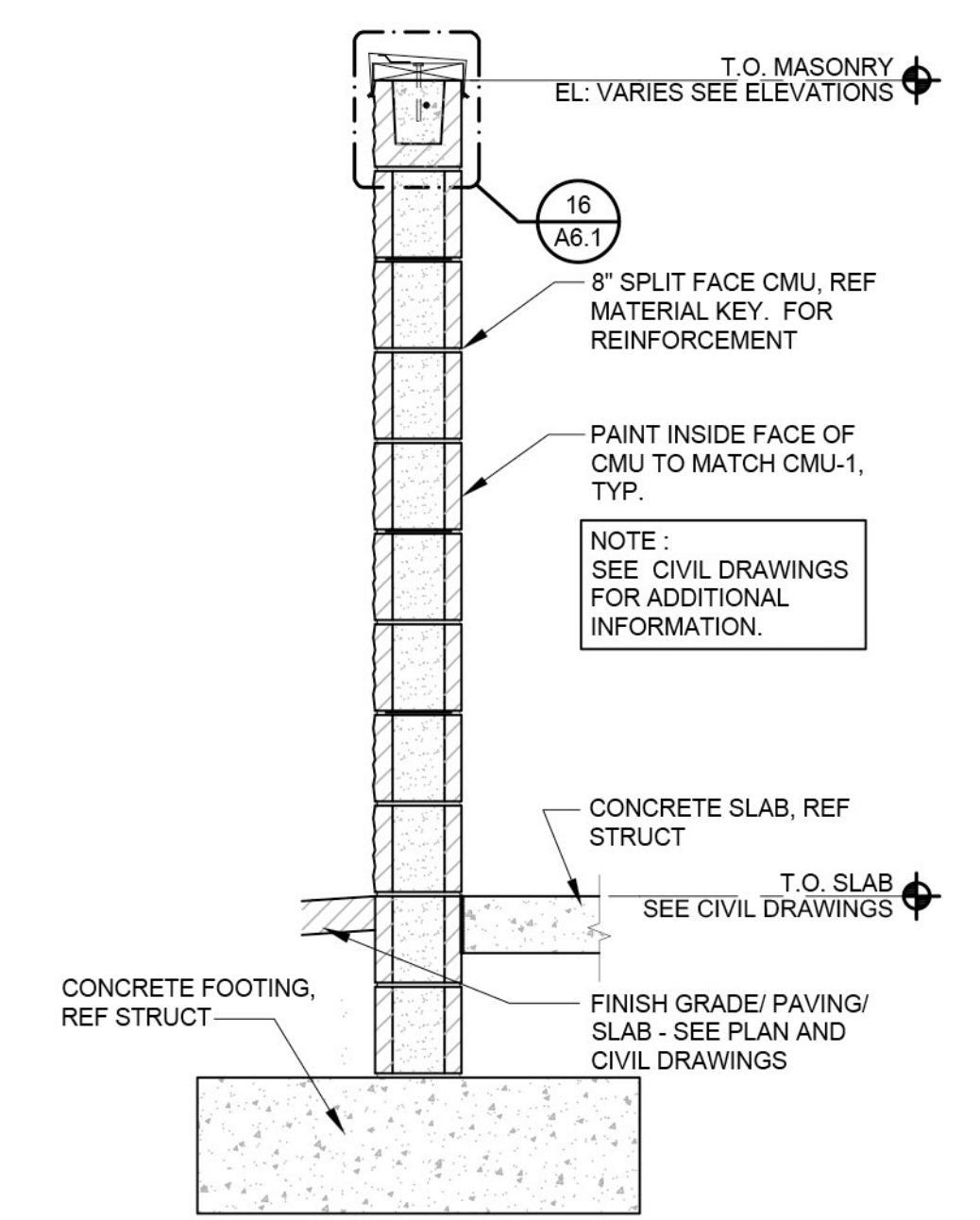


**16 TRASH ENCLOSURE MASONRY CAP DETAIL**  
 A6.1 SCALE: 3"=1'-0"

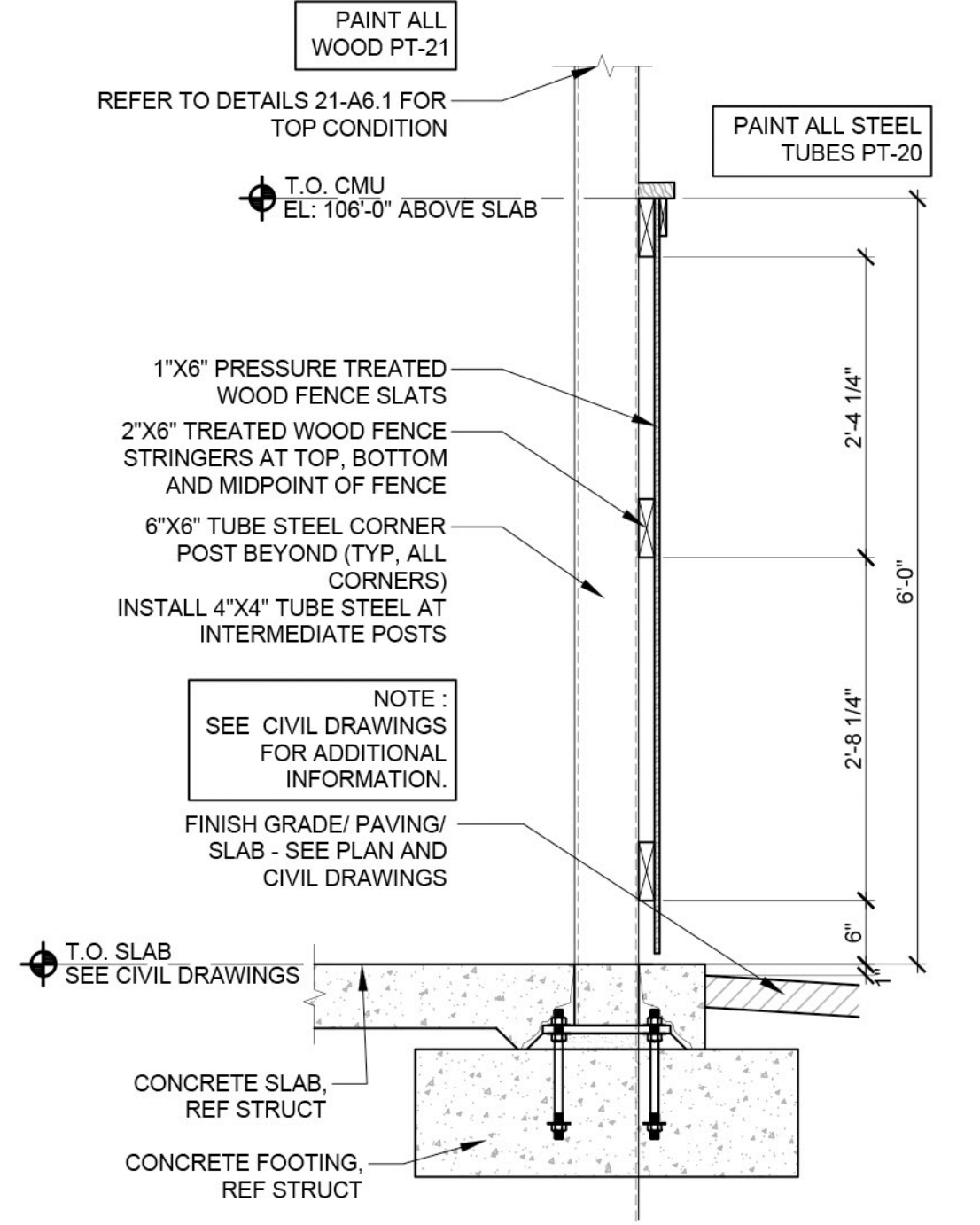


**17 GATE ELEVATION**  
 A6.1 SCALE: 3/4"=1'-0"

NOTES:  
 1. GATE BOLT TO BE OPERABLE FROM EXTERIOR  
 2. PROVIDE ONE LEFT HAND SIDE GATE, ONE RIGHT HAND SIDE GATE



**22 MASONRY SECTION**  
 A6.1 SCALE: 3/4"=1'-0"



**23 FENCE SECTION**  
 A6.1 SCALE: 3/4"=1'-0"

CONSTRUCTION DOCUMENTS WILL BE BASED ON THE LATEST RELEASE OF THE PROTOTYPICAL DOCUMENTS ON LUCERNEX AT THE TIME OF CONSTRUCTION DOCUMENT AUTHORIZATION.  
 NOTE: THIS DRAWING IS FOR CONCEPTUAL PURPOSES ONLY. SITE INFORMATION WAS OBTAINED FROM THE CLIENTS DOCUMENTS; DESIGN MAY VARY.

PROJECT CONTACTS: \_\_\_\_\_ PHONE #: \_\_\_\_\_  
 ARCHITECT: OLIVIA GOOD (918) 587-8600  
 SGA DESIGN GROUP, P.C.  
 PROTOTYPE: SMALL ER

ZONE APPROVAL (BY/DATE): \_\_\_\_\_  
 VP. \_\_\_\_\_  
 CONT. \_\_\_\_\_  
 RM. \_\_\_\_\_  
 CM. \_\_\_\_\_  
 ENTITY ID: XXXXXXX  
 SITE ID: XXXXXXX  
 LEGACY ID: XXXXXXX

**Firestone**  
 COMPLETE AUTO CARE  
THIS DRAWING IS THE PROPERTY OF BRIDGESTONE RETAIL OPERATIONS, LLC AND IS LOANED ON THE EXPRESS CONDITION THAT IT IS NOT TO BE USED IN ANY WAY DELETTERIOUS TO THE INTERESTS OF BRIDGESTONE RETAIL OPERATIONS, LLC. THE ACCEPTANCE OF THIS DRAWING WILL BE CONSIDERED AS AN ACCEPTANCE OF THE FOREGOING CONDITION AND AS ADMISSION TO THE EXCLUSIVE OWNERSHIP IN AND TO THE DRAWING BY BRIDGESTONE RETAIL OPERATIONS, LLC.

HWY 59 & LEVERENZE RD.  
 NAPERVILLE, IL

**SGA Design Group, P.C.**  
 1437 South Boulder, Suite 550  
 Tulsa, Oklahoma 74119.3609  
 p: 918.587.8600  
 f: 918.587.8601  
 www.sgadesigngroup.com

SHEET TITLE: TRASH/TIRE ENCLOSURE DETAILS  
 SHEET NUMBER: **PA6.1**



VIEW A

FIRM REGISTRATION #: 184-005494