

EXISTING TREE SCHEDULE						
NO.	BOTANICAL NAME	COMMON NAME	SIZE	CONDITION	TO BE REMOVED	TO BE ROOT PRUNED
INTERIOR TREES						
1	Gleditsia triacanthos	Honeylocust	32"	fair	yes	-
2	Malus spp.	Crabapple	8", 10"	poor	yes	-
3	Gleditsia triacanthos	Honeylocust	30"	good	no	yes
4	Malus spp.	Crabapple	1-6", 3-8", 2-12"	poor	yes	-
5	Tilia spp.	Linden	14"	fair	no	-
6	Quercus palustris	Pin Oak	26"	good	no	yes
7	Tilia spp.	Linden	26"	fair	no	no
8	Acer spp.	Maple	22"	good	no	no
9	Tilia spp.	Linden	32"	good	yes	-
10	Pinus spp.	Pine	20"	fair/poor	yes	-
11	Gleditsia triacanthos	Honeylocust	30"	good	no	yes
12	Gleditsia triacanthos	Honeylocust	34"	good	no	yes
13	Pinus spp.	Pine	28"	fair/poor	yes	-
14	Gleditsia triacanthos	Honeylocust	36"	good	no	yes
15	Crataegus spp.	Hawthorn	13"	poor/fair	yes	-
16	Crataegus spp.	Hawthorn	10", 3-4", 2-6"	poor/fair	yes	-
17	Crataegus spp.	Hawthorn	8", 2-7", 5"	poor/fair	yes	-
18	Acer spp.	Maple	6"	poor	yes	-
19	Gleditsia triacanthos	Honeylocust	27"	good	yes	-
20	Pinus spp.	Pine	20"	dead	yes	-
21	Crataegus spp.	Hawthorn	12", 6"	fair	yes	-
22	Crataegus spp.	Hawthorn	7", 8", 10", 14"	good	yes	-
23	Tilia spp.	Linden	26"	poor	yes	-
24	Acer spp.	Maple	8"	good	yes	-
25	Acer spp.	Maple	5"	good	yes	-
PARKWAY TREES						
26	Ulmus spp.	Elm	6"	good	no	no
27	Fraxinus spp.	Ash	13"	poor/fair	no	no
28	Fraxinus spp.	Ash	14"	poor/fair	no	no
29	Fraxinus spp.	Ash	14"	poor/fair	no	no

NOTE:
ALL EXISTING TREES NOTED AS TO REMAIN (WITH THE EXCEPTION OF PARKWAY TREES) SHALL BE CANOPY PRUNED BY A QUALIFIED TREE SERVICE.
ROOT PRUNING SHALL BE PERFORMED BY A QUALIFIED TREE SERVICE FIRM PER EXISTING TREE SCHEDULE AND SEQUENCED IN COORDINATION WITH CONTRACTOR.

TOPSOIL STRIPPING AND STOCKPILING NOTES:

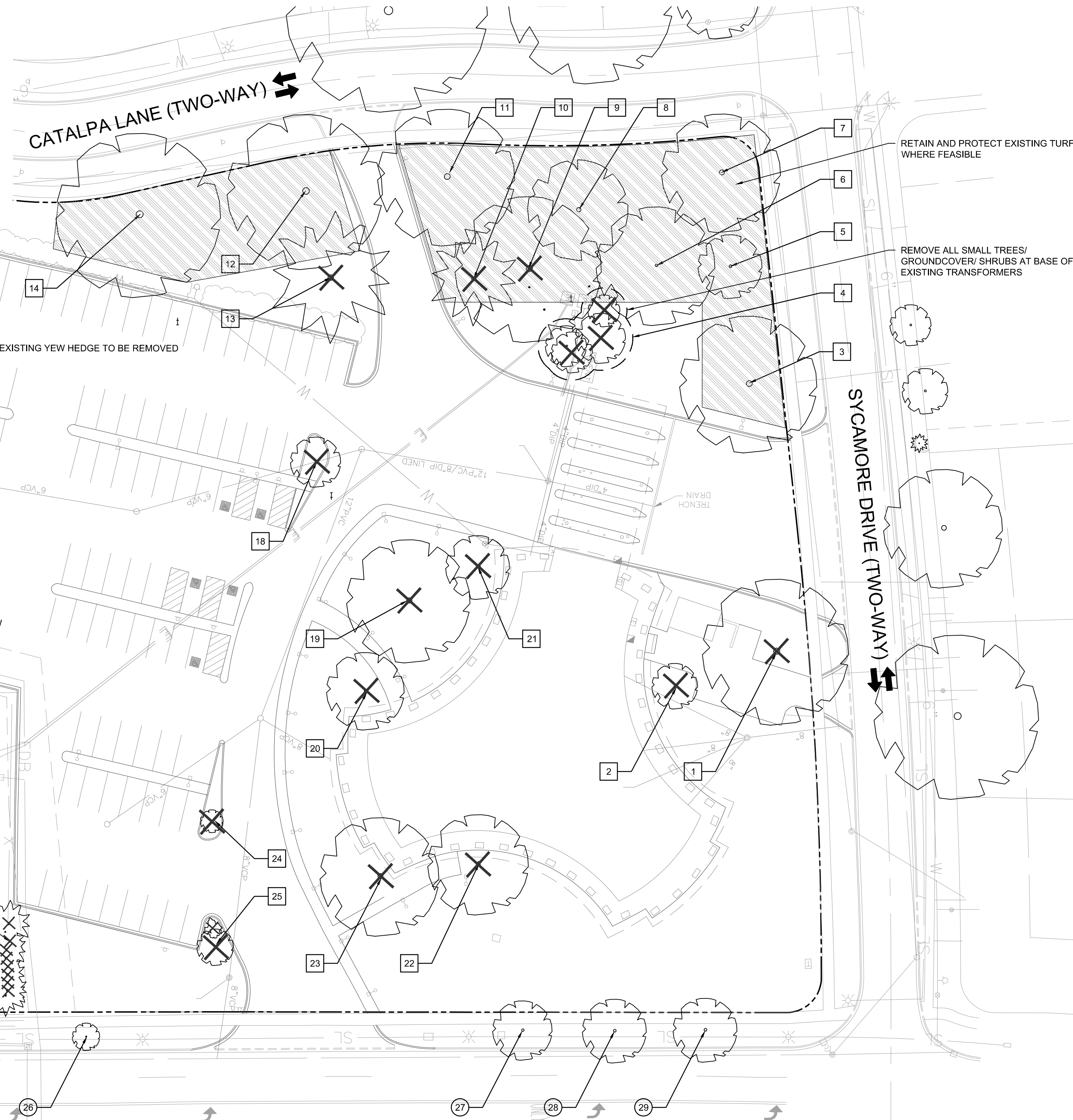
- STRIP TOPSOIL ONLY FROM THOSE AREAS WHICH WILL BE DISTURBED BY EXCAVATION, FILLING OR OTHER CONSTRUCTION ACTIVITIES. MINIMIZE THE EXTENT OF DISTURBANCE ACTIVITIES TO MINIMIZE IMPACTS TO SOIL OUTSIDE THE PROJECT LIMITS.
- MITIGATE CONSTRUCTION-RELATED SOIL COMPACTION IN VEGETATION RESTORATION AREAS. MEANS OF MITIGATION TO BE APPROVED BY LANDSCAPE ARCHITECT.
- STOCKPILE TOPSOIL IN MOUNDS NO HIGHER THAN 4 FEET HIGH. COVER TO PREVENT SOIL EROSION AND CONTAMINATION BY WEEDS.

PLANTING PROTECTION AND REMOVAL NOTES:

- PRIOR TO THE COMMENCEMENT OF PLANTING PROTECTION AND REMOVAL SCOPE OF WORK, CONVENE A PRE-CONSTRUCTION CONFERENCE WITH AOR, LA, CONTRACTOR AND ANY ASSOCIATED AND RELEVANT DESIGN TEAM MEMBERS, SUBCONTRACTORS AND AHJ TO REVIEW WORK SCOPE, SCHEDULE AND TO REVIEW OAA BY DESIGN TEAM, AHJ AND CONTRACTORS. CONTRACTOR TO PROVIDE MINIMUM 5 BUSINESS DAY NOTICE FOR ALL MEETINGS.
- CONFIRM ALL PLANTING REMOVAL AND PROTECTION QUANTITIES AND DIMENSIONS.
- INSTALL PLANT PROTECTION FENCING PRIOR TO SITE WORK AND MAINTAIN THROUGHOUT CONSTRUCTION PERIOD. NO STORAGE OF MATERIALS, VEHICULAR ACCESS OR ANY OTHER CONSTRUCTION ACTIVITIES PERMITTED WITHIN THE TREE PROTECTION ZONE UNO.
- ALL PLANT AND SITE PROTECTION FENCING TO BE INSTALLED AND APPROVED BY LANDSCAPE ARCHITECT PRIOR TO HARDSCAPE DEMOLITION AND/OR CONSTRUCTION OPERATIONS.
- ADJUST PLANT PROTECTION FENCING AS NEEDED THROUGHOUT CONSTRUCTION OPERATIONS TO PROTECT CRITICAL ROOT ZONES OF ALL TREES.
- MARK ALL ROOT PRUNING LOCATIONS PRIOR TO EXECUTION FOR REVIEW AND APPROVAL BY LA.
- PROVIDE TEMPORARY IRRIGATION FOR ALL EXISTING PLANT MATERIAL AND MAINTAIN THROUGHOUT CONSTRUCTION OPERATIONS. PROVIDE IN SUCH A MANNER AS TO NOT IMPACT EXISTING ROOT SYSTEMS OF PLANT MATERIAL.
- REMOVE ALL EXISTING TREE AND SHRUB STUMPS AND ROOTS THAT IMPACT WORK. GRIND OUT STUMPS TO A MINIMUM DEPTH OF 18". BRING TO FINISH GRADE PRIOR TO COMPLETION OF WORK.
- REMOVE MULCH, LAWN, AND PLANTING BEDS AND EXCAVATE EARTH TO COORDINATE WITH GRADING, EARTHWORK AND SITE IMPROVEMENTS.
- FOR TREE PROTECTION DETAILS, SEE SHEET(S) LP-02.

LEGEND

- PROPERTY LINE
- [Hatched Box] LIMIT OF TREE PROTECTION FENCING, TO BE 4'H TEMPORARY CHAINLINK
- [Tree Symbol] EXISTING DECIDUOUS TREE, PROTECT TO REMAIN
- [Tree Symbol with X] EXISTING DECIDUOUS TREE, TO BE REMOVED
- [Tree Symbol with Star] EXISTING CONIFEROUS TREE, TO BE REMOVED
- [Box 18] EXISTING INTERIOR TREE CALLOUT
- [Box 26] EXISTING PARKWAY TREE CALLOUT



THE SHOPPES ON WASHINGTON

1001 S. Washington Street, Naperville, IL 60540

site landscape architecture urban design
 site design group, ltd.
 888 South Morgan Avenue #1000, Chicago, IL 60605
 p. 312.427.7249 e. www.sdg.com

OKW Architects, Inc. Architect
 600 W Jackson Blvd #250, Chicago, IL 60661
 p. 312.798.7700 e. www.okw.com

Civil & Environmental Consultants, Inc. Civil Engineer
 555 Butterfield Road #300, Lombard, IL 60148
 p. 800.385.2324 e. www.cecon.com



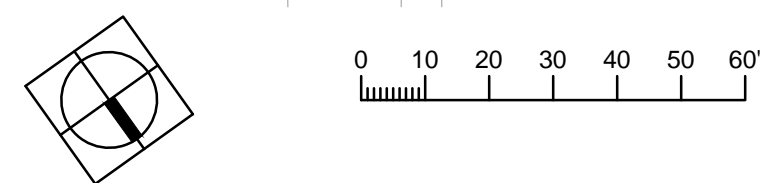
ISSUANCES

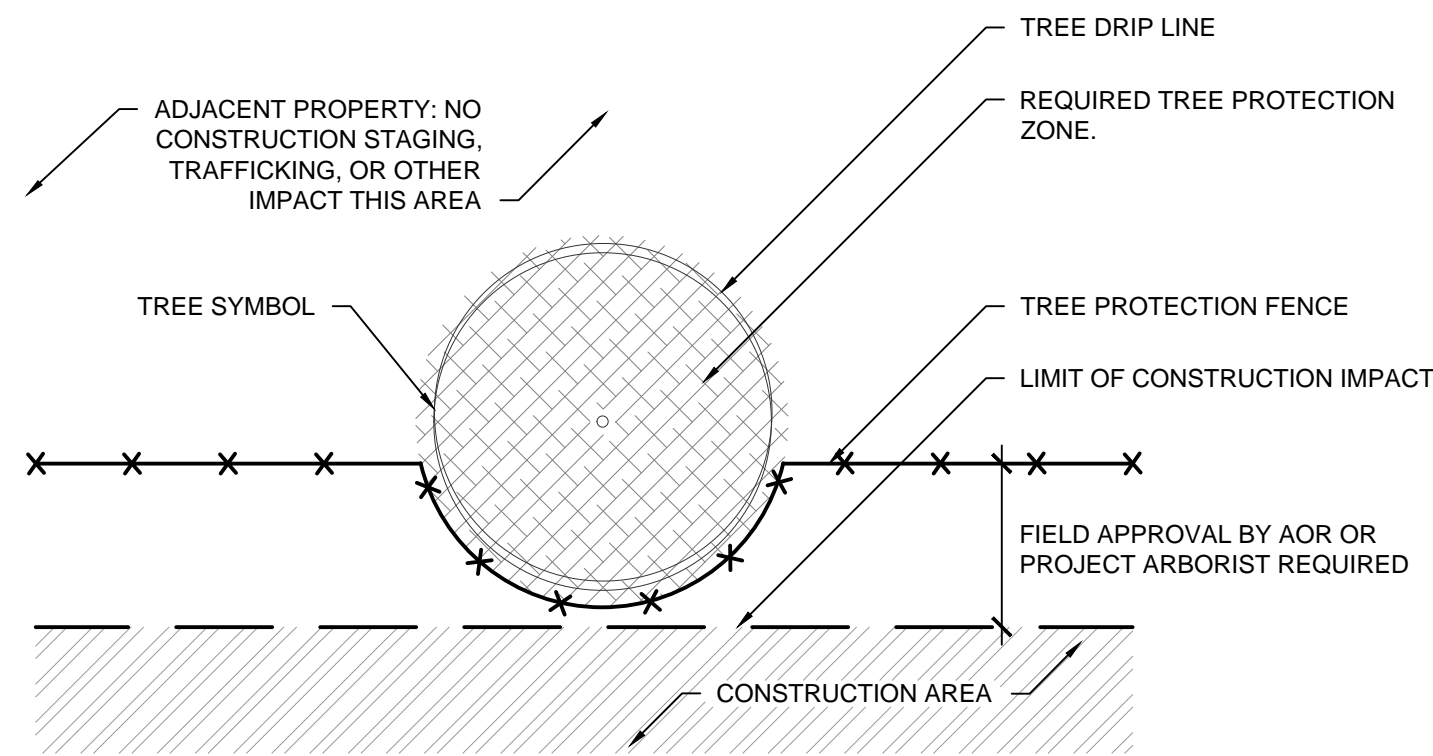
Rev. #	Description	Date Issued
01	PERMIT	04/25/2019
02	PERMIT REVISION	06/06/2019
03	PERMIT REVISION	07/09/2019
04	PERMIT REVISION	07/31/2019

Project No : 8496
 Drawn : LR File : 8496_plnt_demo.dwg
 Checked : MJ Scale : AS NOTED
 Approved : BM

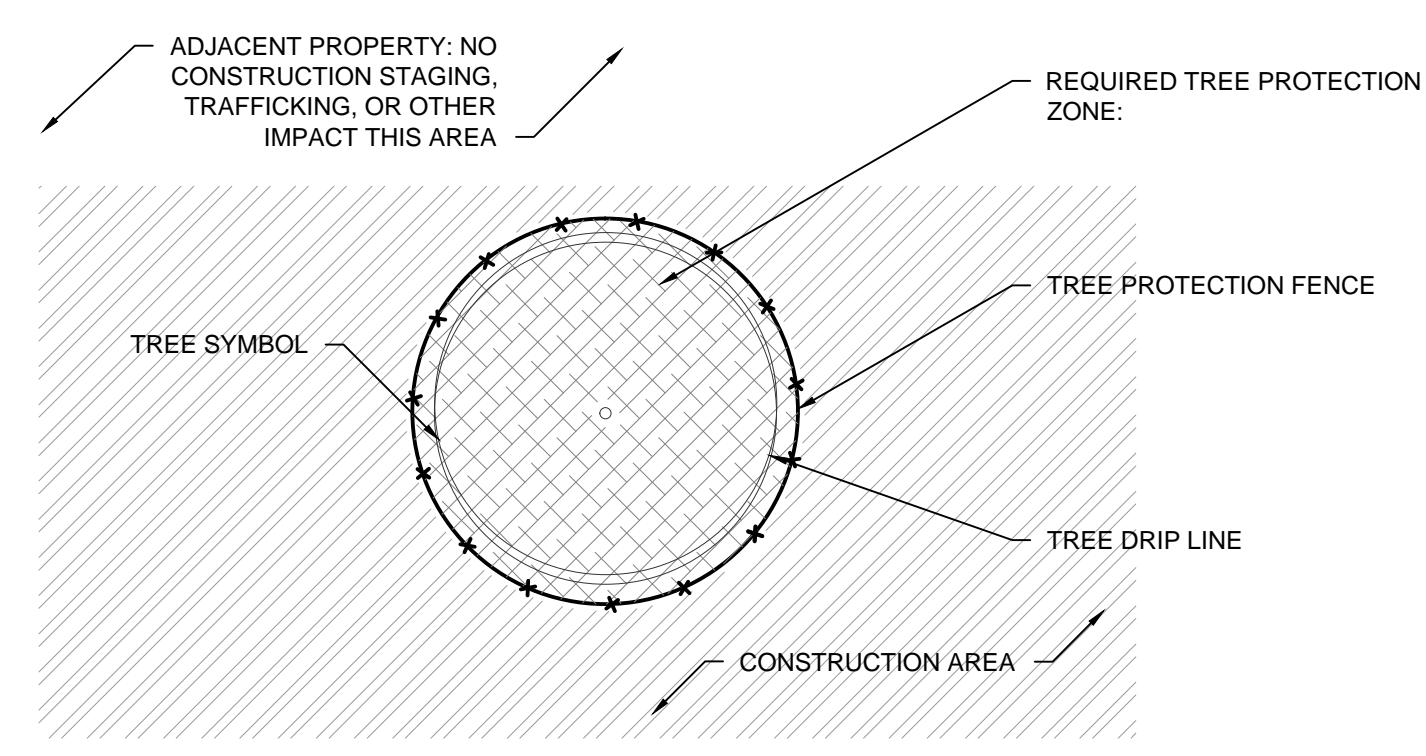
Sheet Title:
LANDSCAPE PRESERVATION AND REMOVAL PLAN

Drawing Number:

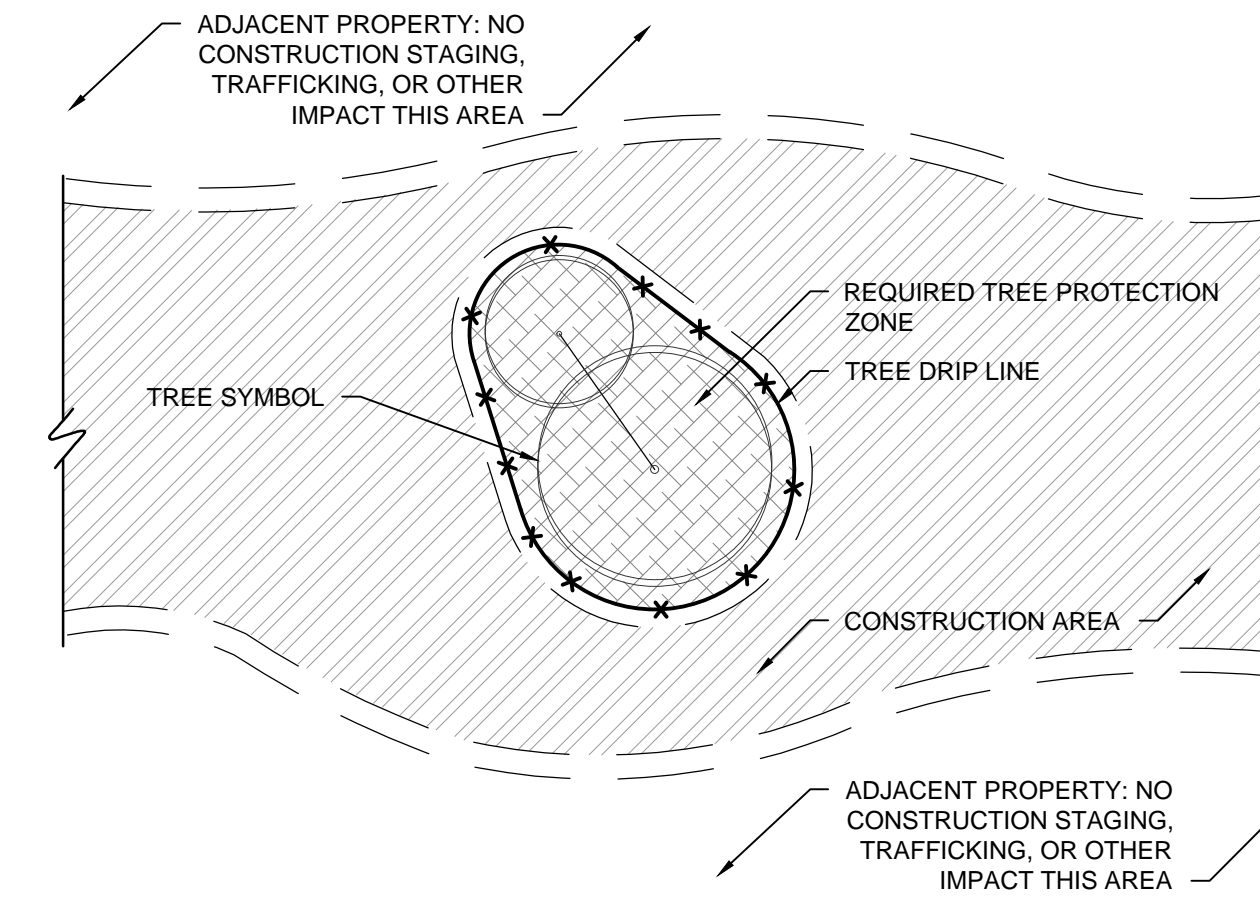




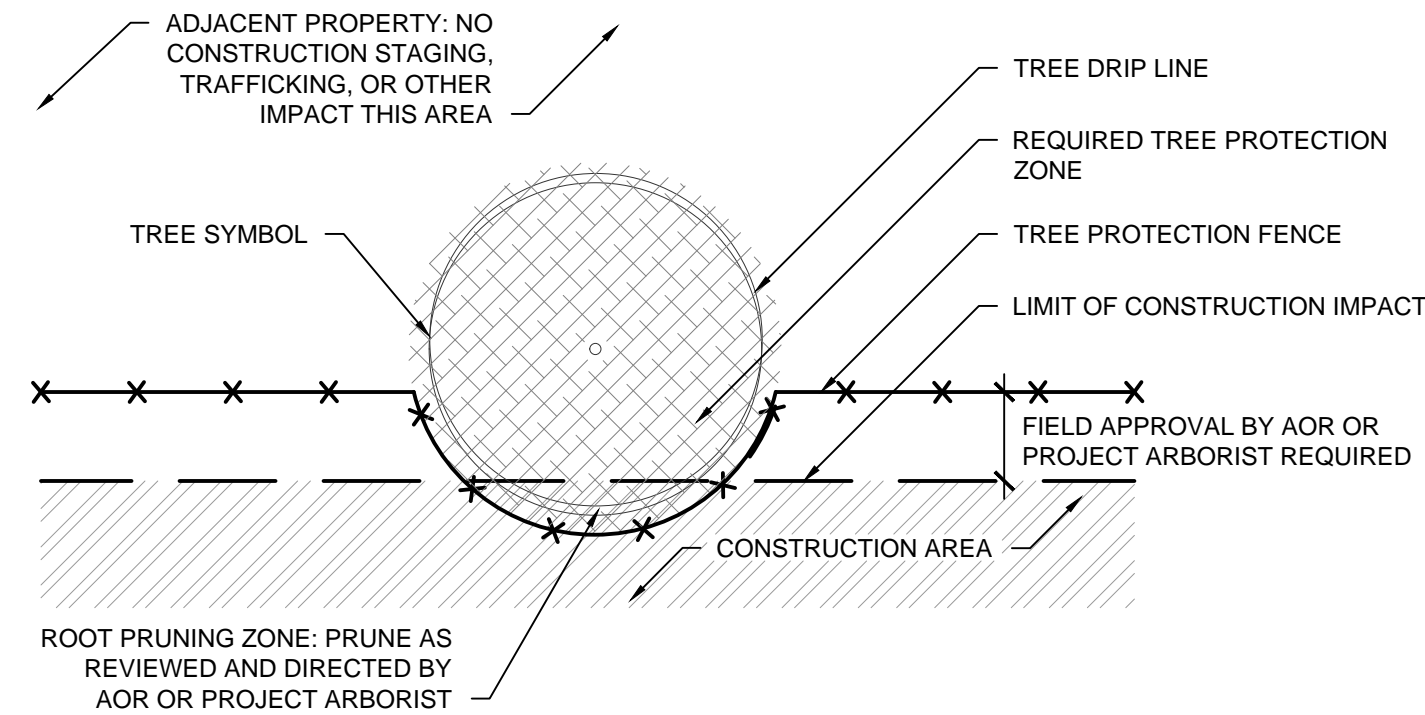
1A TREE PROTECTION FENCE INTERSECTS PROPERTY LIMIT;
NO ROOT PRUNING REQUIRED PLAN
NOT TO SCALE



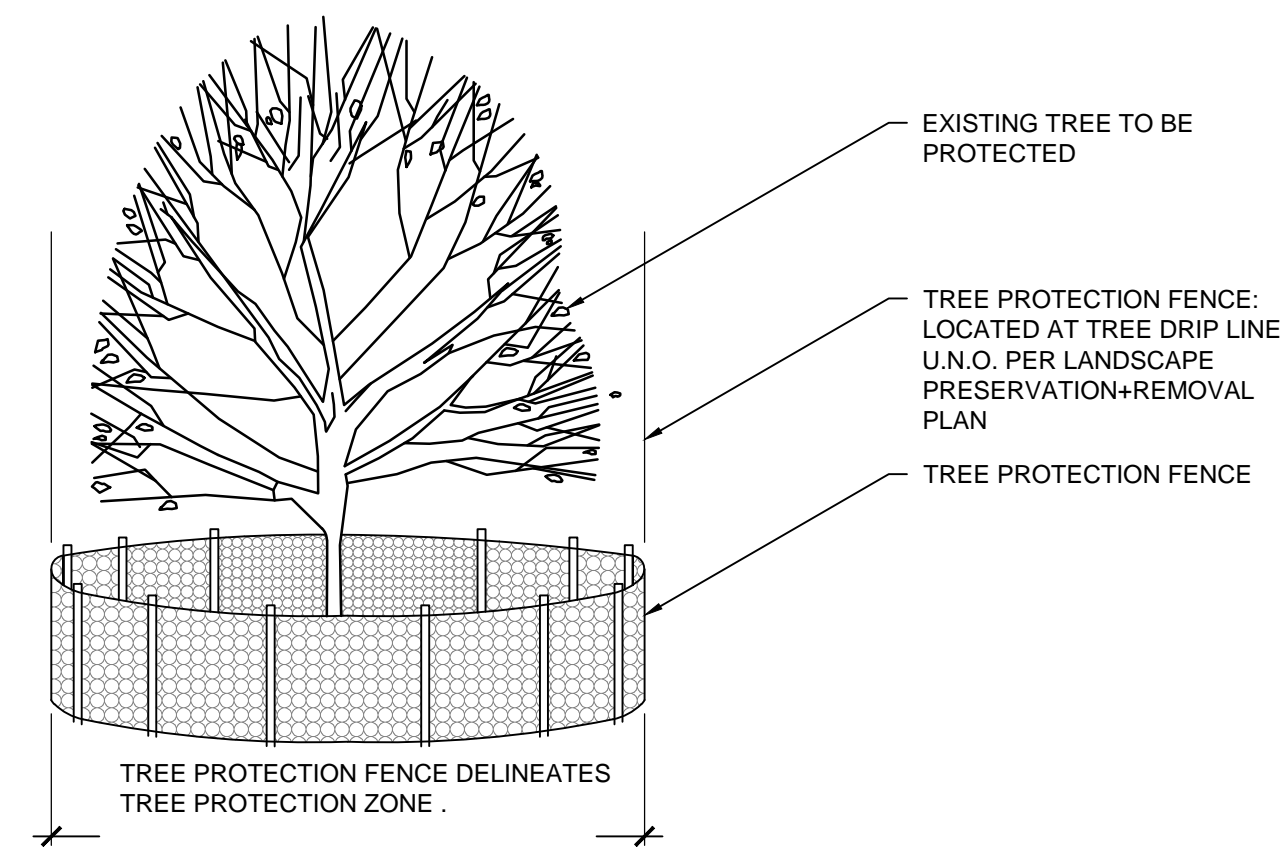
2A TREE PROTECTION ENTIRELY
WITHIN CONSTRUCTION AREA PLAN
NOT TO SCALE



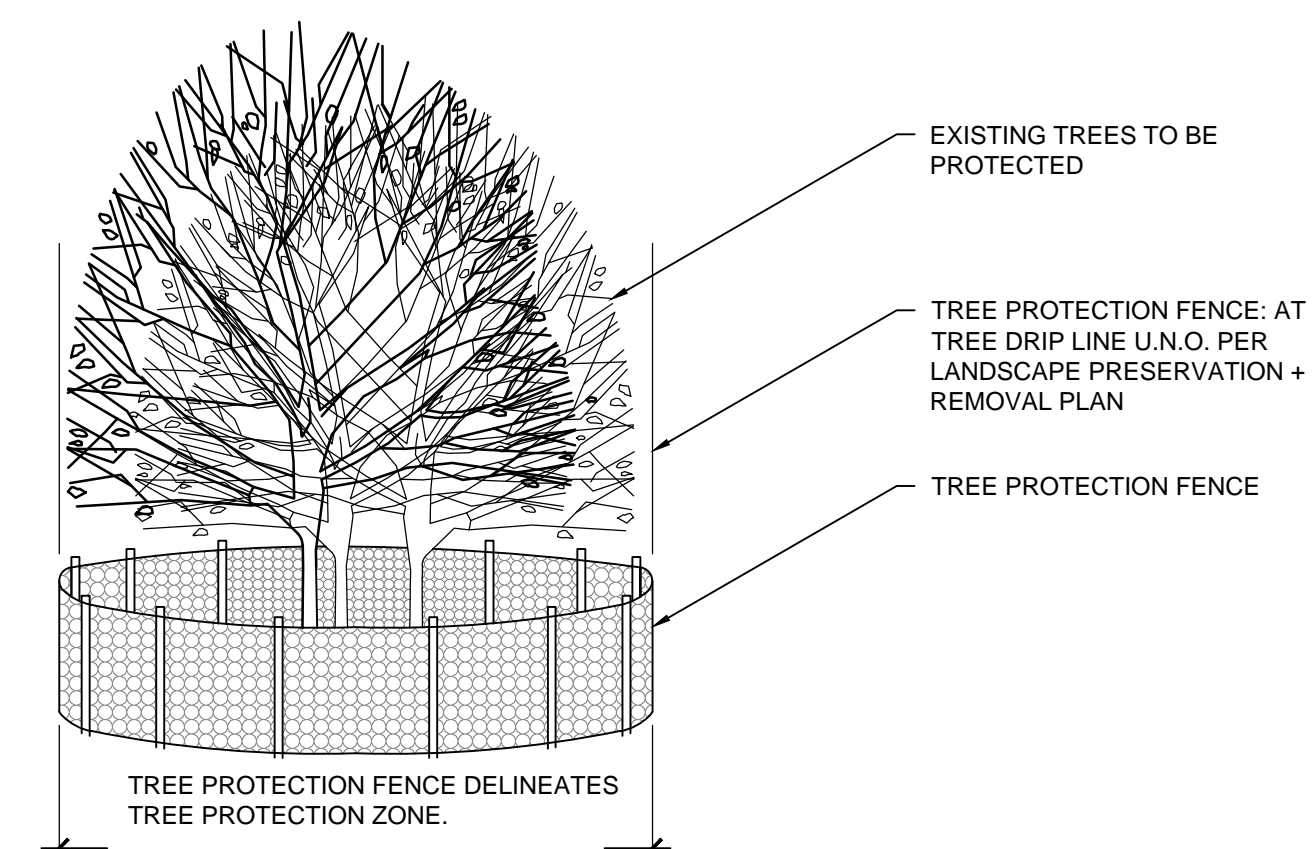
3A GROUP TREE PROTECTION
ENTIRELY WITHIN CONSTRUCTION AREA PLAN
NOT TO SCALE



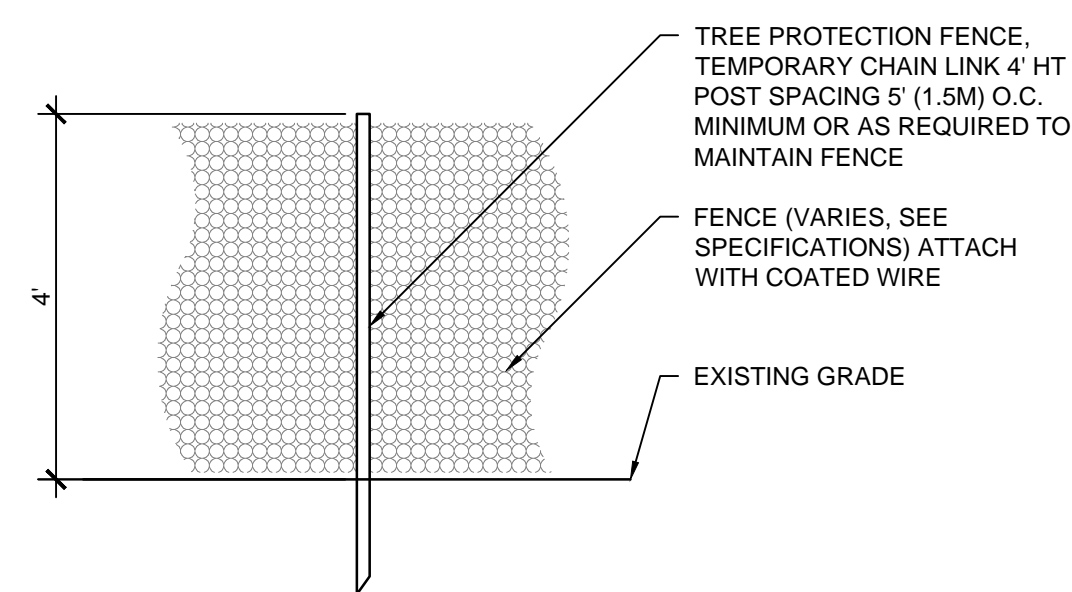
1B TREE PROTECTION FENCE INTERSECTS PROPERTY LIMIT;
ROOT PRUNING REQUIRED PLAN
NOT TO SCALE



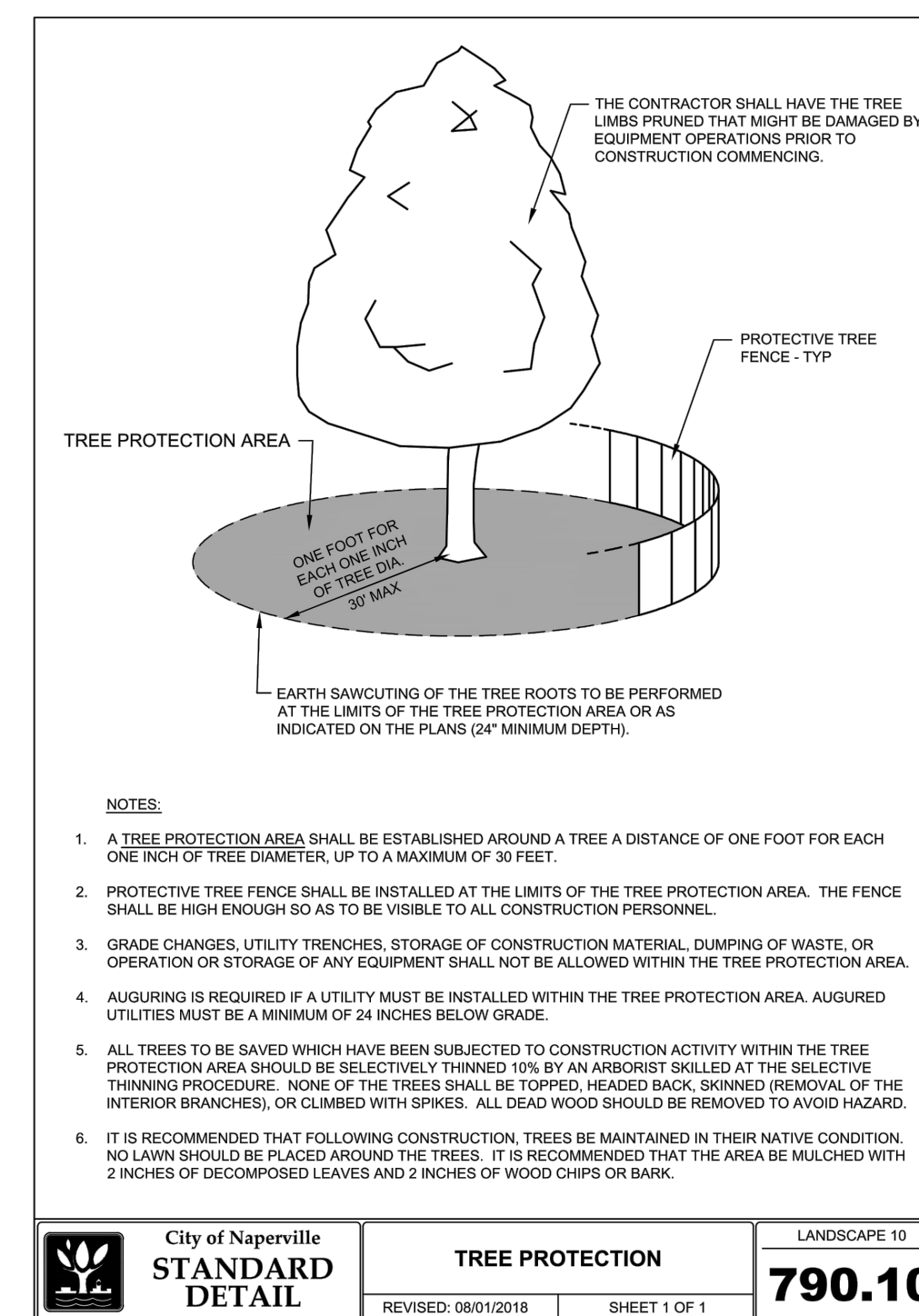
2B TREE PROTECTION ENTIRELY
WITHIN CONSTRUCTION AREA ELEVATION
NOT TO SCALE



3B GROUP TREE PROTECTION
ENTIRELY WITHIN CONSTRUCTION AREA ELEVATION
NOT TO SCALE



4 TREE PROTECTION FENCE
NOT TO SCALE

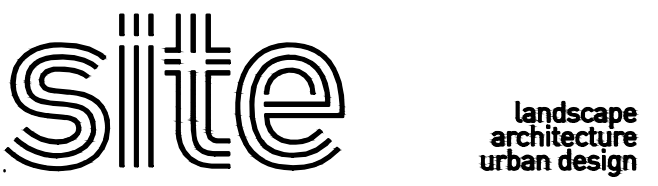


5 CITY OF NAPERVILLE
TREE PROTECTION DETAIL
NOT TO SCALE

City of Naperville STANDARD DETAIL	TREE PROTECTION REVISED: 06/01/2016	LANDSCAPE 10
		790.10

THE SHOPPES ON WASHINGTON

1001 S. Washington Street, Naperville, IL 60540



site design group, llc.
 888 South Morgan Avenue #1000, Chicago, IL 60605
 p. 312.427.7249 e. www.sds-design.com
 Landscape Architect

OKW Architects, Inc. Architect
 600 W Jackson Blvd #250, Chicago, IL 60661
 p. 312.798.7700 e. www.okwarch.com

Civil & Environmental Consultants, Inc. Civil Engineer
 555 Butterfield Road #300, Lombard, IL 60148
 p. 800.385.2324 e. www.cecon.com



28278

Rev. #	Description	Date Issued
01	PERMIT	04/25/2019
02	PERMIT REVISION	06/06/2019
03	PERMIT REVISION	07/09/2019
04	PERMIT REVISION	07/31/2019

Project No : 8496
 Drawn : LR File : 8496_dett_demo.dwg
 Checked : MJ Scale : AS NOTED
 Approved : BM

Sheet Title:
TREE PROTECTION DETAILS

Drawing Number:

LP-02

ADD ALTERNATE 1:

- IN LIEU OF CONCRETE SIDEWALK, PROVIDE AND INSTALL CONCRETE UNIT PAVERS WITH AGGREGATE SUBBASE.
BASIS OF DESIGN: IL CAMPO PAVERS AS SUPPLIED BY UNILOCK, PAVES SIZE, COLOR AND LAYOUT TO BE DETERMINED BY LANDSCAPE ARCHITECT.

LEGEND

- PROPERTY LINE
- 4TH ORNAMENTAL METAL FENCE
- [Pattern] STABILIZED DECOMPOSED AGGREGATE
- [Pattern] PREMIUM HARDWOOD MULCH
- [Pattern] CONCRETE SIDEWALK, REFER TO CIVIL
- [Pattern] ORNAMENTAL GRASSES / PERENNIALS / GROUNDCOVERS W/ PREMIUM HARDWOOD MULCH
- [Pattern] SOD
- [Pattern] IDOT CLASS 3 NORTHERN ILLINOIS SLOPE SEED MIXTURE AND EROSION CONTROL BLANKET
- [Symbol] EXISTING TREE
- [Symbol] SHADE TREE
- [Symbol] ORNAMENTAL TREE
- [Symbol] SHRUBS
- [Symbol] FREESTANDING PLANTERS
- [Symbol] HOSE BIBB REFER TO MEP
- [Symbol] LIGHT POLE REFER TO MEP, CIVIL
- [Symbol] BIKE RACK

THE SHOPPES ON WASHINGTON

1001 S. Washington Street, Naperville, IL 60540

sitē landscape architecture urban design
 site design group, ltd.
 888 South Morgan Avenue #1000, Chicago, IL 60605
 p. 312.427.7249 w. www.sitē-design.com
 Landscape Architect

OKW Architects, Inc. Architect
 600 W Jackson Blvd #250, Chicago, IL 60661
 p. 312.798.7700 w. www.okw.com

Civil & Environmental Consultants, Inc. Civil Engineer
 555 Butterfield Road #300, Lombard, IL 60148
 p. 800.385.2324 w. www.cecon.com

NAPERVILLE LANDSCAPE REQUIREMENTS SUMMARY:

- PARKWAY LANDSCAPING:**
 FINE GRADED AND PLANTED WITH SOD
 TREES SPACED MAX. 40' O.C.; 2.5" CAL.; NO MORE THAN 5 TREES OF SAME SPECIES IN A ROW
 30' LINE-OF-SIGHT TRIANGLES AT INTERSECTIONS
- PERIMETER LANDSCAPING:**
 SOD OR PLANTING
 TREES SPACED MAX. 70' O.C.; 2.5" CAL.
- PERIMETER PARKING LOT LANDSCAPING:**
 MIN. 5' WIDE LANDSCAPE BUFFER
 MIN. 30" HEIGHT, CONTINUOUS PLANTING; 4' O.C.
- INTERIOR PARKING LOT LANDSCAPING:**
 MIN. 8' WIDTH ISLANDS (B.O.C. TO B.O.C.)
 MIN 130 SF PER ISLAND
 EACH ISLAND REQUIRES (1) 2.5" CAL. SHADE TREE AND MIN. 50% PLANTINGS (NOT TO EXCEED 30" HEIGHT; NO THORNS)
- NOTE TO REVIEWER:**
 ALL LANDSCAPE PLANTS COMPLY WITH THE SEPARATION DISTANCES FROM UTILITY SERVICES - STRUCTURES AS REQUIRED BY THE NAPERVILLE CODE OF ORDINANCES: SUBSECTION 5-10-3.

- ISSUANCES**
- | Rev. # | Description | Date Issued |
|--------|-----------------|-------------|
| 01 | PERMIT | 04/25/2019 |
| 02 | PERMIT REVISION | 06/06/2019 |
| 03 | PERMIT REVISION | 07/09/2019 |
| 04 | PERMIT REVISION | 07/31/2019 |
- TREES SHALL BE SETBACK A MINIMUM OF TEN (10) FEET HORIZONTALLY FROM STORM & UTILITY STRUCTURES, INCLUDING, BUT NOT LIMITED TO MANHOLES, VALVE VAULTS, VALVE BOXES, FIRE HYDRANTS, TRANSFORMERS AND SWITCH CANS
- TREES SHALL BE SETBACK A MINIMUM OF FIVE (5) FEET HORIZONTALLY FROM SANITARY SEWER, STORM SEWER, AND WATER SERVICES

- FOUNDATION LANDSCAPING:**
- SHALL CONSIST OF A MINIMUM RATIO OF ONE PLANT FOR EVERY (3) LINEAR FEET OF BUILDING LENGTH.
 - SHALL BE A COMBINATION OF DECIDUOUS SHRUBS, EVERGREENS, FLOWERS, ORNAMENTAL GRASSES, AND OTHER NATIVE GROUNDCOVERS.
 - SHALL BE LOCATED ADJACENT TO ALL SIDES OF BUILDINGS WHICH FACE A PUBLIC RIGHT OF WAY OR INTERNAL STREET ACCESS DRIVE.
 - SHALL BE MIN 2' WIDTH PLANTING BED.
- RETAIL A =**
 208 LF FOUNDATION REQUIRED
 70 PLANTS REQUIRED
 404 PLANTS PROVIDED
- RETAIL B =**
 236 LF FOUNDATION REQUIRED
 79 PLANTS REQUIRED
 91 PLANTS PROVIDED
- RETAIL C =**
 342 LF FOUNDATION REQUIRED
 114 PLANTS REQUIRED
 172 PLANTS PROVIDED

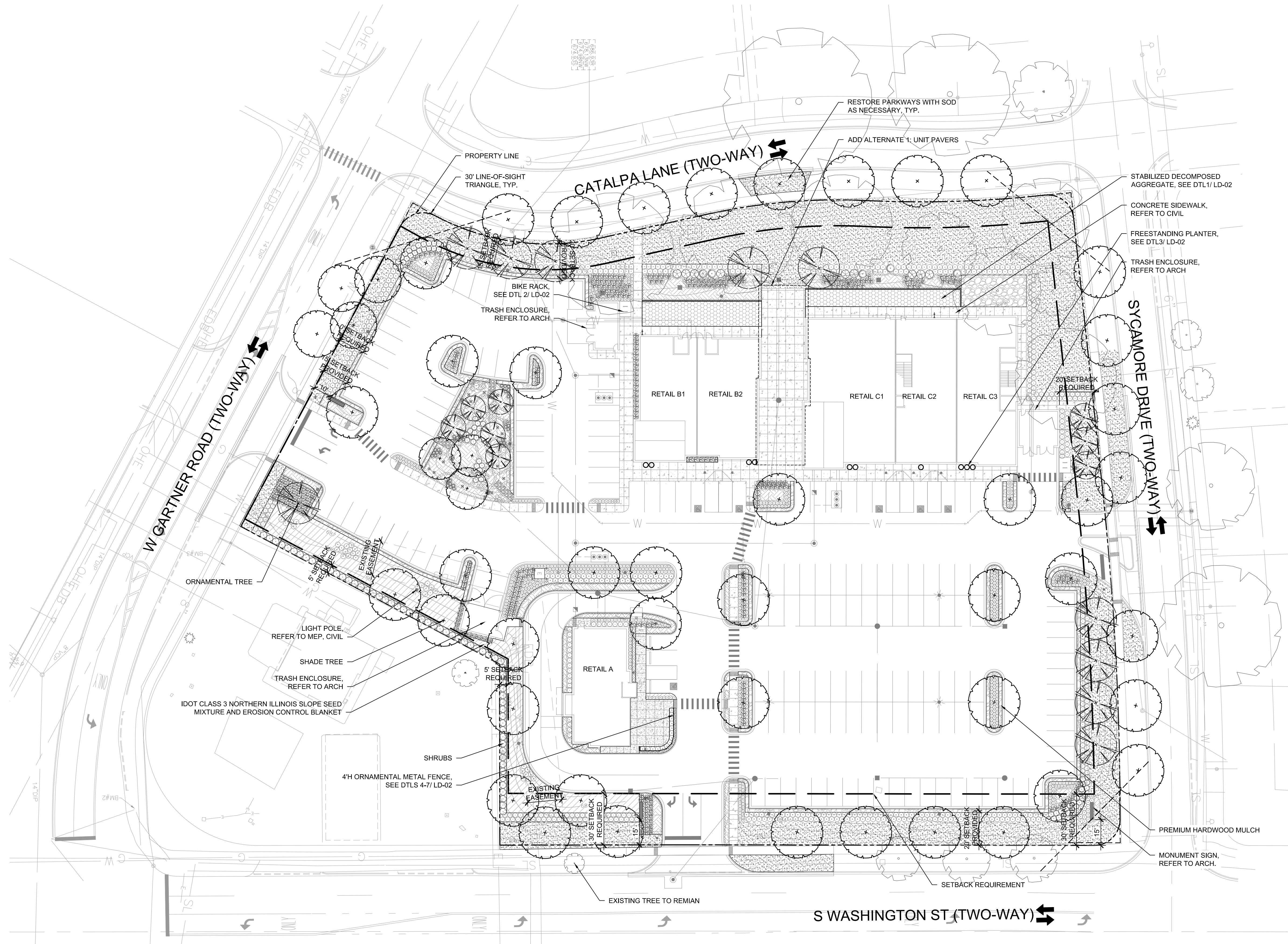
PROPOSED VS REMOVED TREE DIFFERENTIAL:

17 EXISTING TREES ARE TO BE REMOVED
 89 NEW TREES ARE PROPOSED
 52 NET INCREASE IN THE NUMBER OF TREES COMPARED TO EXISTING (BEFORE DEMOLITION)

Project No : 8496
 Drawn : LR File : 8496_sitē.dwg
 Checked : MJ Scale : AS NOTED
 Approved : BM

Sheet Title:
OVERALL LANDSCAPE PLAN (FOR REFERENCE ONLY)

Drawing Number:
LA-01



1 OVERALL LANDSCAPE PLAN (FOR REFERENCE ONLY)
 1" = 30'-0"

CODE	QTY	BOTANICAL NAME	COMMON NAME	ROOT	SIZE	REMARKS
SHADE TREES						
AC.MI	6	<i>Acer miyabei</i> 'Morton'	State Street Maple	B&B	2.5" cal	matching heads
CA.SP	4	<i>Catalpa speciosa</i>	Northern Catalpa	B&B	2.5" cal	matching heads
CE.OC	8	<i>Celtis occidentalis</i>	Hackberry	B&B	2.5" cal	matching heads
GI.BI	3	<i>Ginkgo biloba</i> 'Princeton Sentry'	Princeton Sentry Ginkgo	B&B	2.5" cal	male only
GL.TR	5	<i>Gleditsia triacanthos</i> var. <i>inermis</i> 'Shademaster'	Shademaster Thornless Honey Locust	B&B	2.5" cal	matching heads
GY.DI	4	<i>Gymnocladus dioica</i> 'Espresso'	Espresso Kentucky Coffeetree	B&B	2.5" cal	matching heads
PL.AC	4	<i>Platanus acerifolia</i> 'Morton Circle'	Exclamation London Planetree	B&B	2.5" cal	matching heads
QU.BI	4	<i>Quercus bicolor</i>	Swamp White Oak	B&B	2.5" cal	matching heads
TA.DI	3	<i>Taxodium distichum</i> 'Shawnee Brave'	Shawnee Brave Baldcypress	B&B	2.5" cal	matching heads
TI.AM	4	<i>Tilia americana</i> 'Redmond'	Redmond American Linden	B&B	2.5" cal	matching heads
UL.NH	4	<i>Ulmus</i> 'New Horizon'	New Horizon Elm	B&B	2.5" cal	matching heads
UL.TR	4	<i>Ulmus</i> 'Triumph'	Triumph Elm	B&B	2.5" cal	matching heads
ORNAMENTAL TREES						
AM.GR	3	<i>Amelanchier x grandiflora</i> 'Autumn Brilliance'	Autumn Brilliance Autumn Brilliance	B&B	8' ht	multistem
BE.NI	5	<i>Betula nigra</i> 'Heritage'	Heritage River Birch	B&B	10' ht	multistem
CO.MA	4	<i>Cornus mas</i> 'Golden Glory'	Golden Glory Cornelian Cherry Dogwood	B&B	8' ht	multistem
CR.CR	3	<i>Crataegus crus-galli</i> var. <i>inermis</i>	Thornless Cockspur Hawthorn	B&B	8' ht	multistem
MA.SA	1	<i>Malus sargentii</i>	Sargent Crabapple	B&B	8' ht	multistem
SOD						
--	--	--	Black Beauty Fescue Sod. Contractor to verify final quantities as needed.	--	--	minimize visible seam, pin to slope with staples, roll

LEGEND

- PROPERTY LINE
- 4TH ORNAMENTAL METAL FENCE
- [Pattern] STABILIZED DECOMPOSED AGGREGATE
- [Pattern] PREMIUM HARDWOOD MULCH
- [Pattern] CONCRETE SIDEWALK, REFER TO CIVIL
- [Pattern] ORNAMENTAL GRASSES / PERENNIALS / GROUNDCOVERS W/ PREMIUM HARDWOOD MULCH
- [Pattern] SOD
- [Pattern] IDOT CLASS 3 NORTHERN ILLINOIS SLOPE SEED MIXTURE AND EROSION CONTROL BLANKET
- EXISTING TREE
- SHADE TREE
- ORNAMENTAL TREE
- SHRUBS
- FREESTANDING PLANTERS
- HOSE BIBB REFER TO MEP
- LIGHT POLE REFER TO MEP, CIVIL
- BIKE RACK

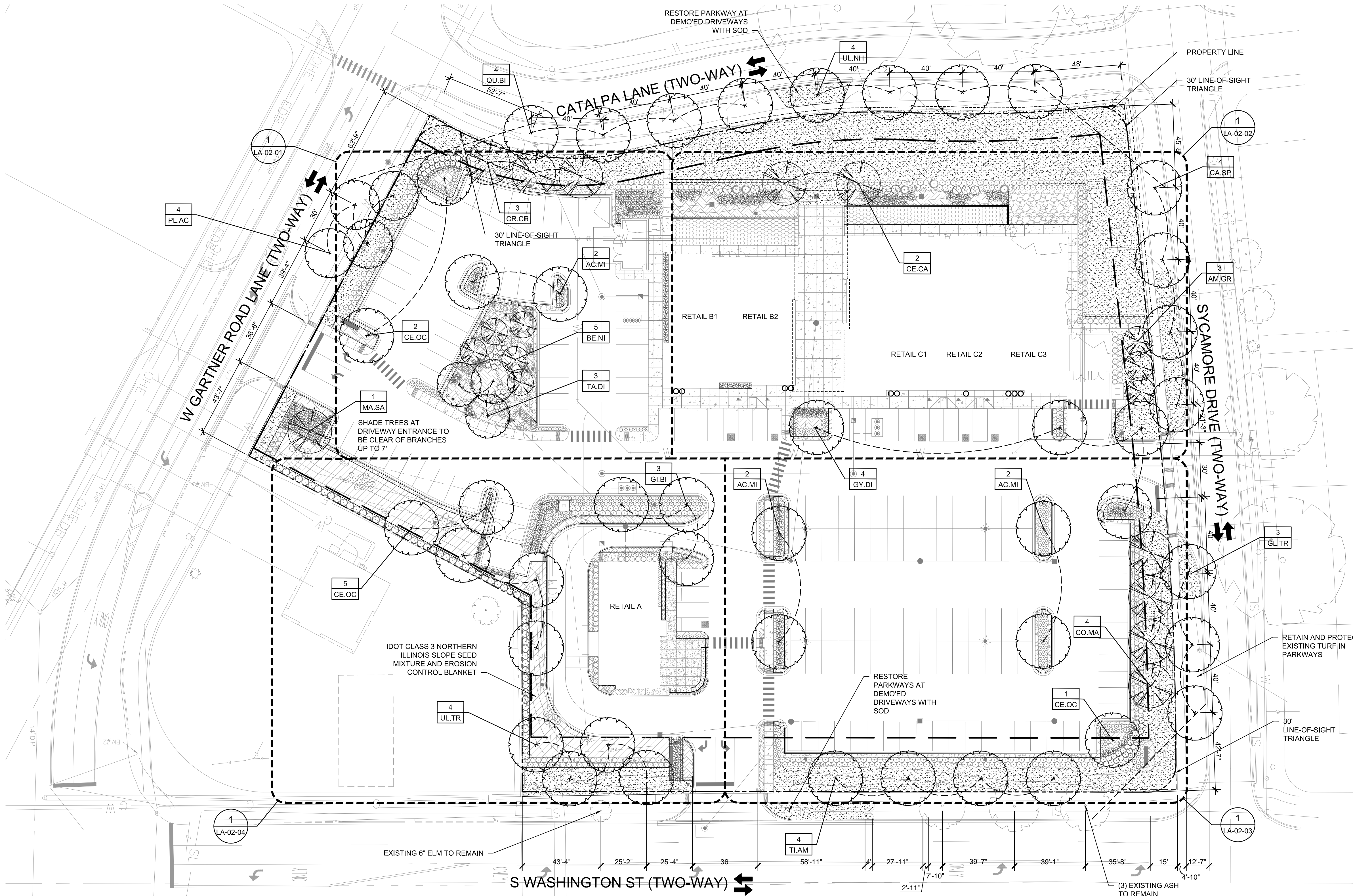
THE SHOPPES ON WASHINGTON

1001 S. Washington Street, Naperville, IL 60540

sitate landscape architecture urban design
 site design group, ltd.
 888 South Morgan Avenue #1000, Chicago, IL 60605
 p. 312.427.7249 e. www.sitate-design.com
 Landscape Architect

OKW Architects, Inc. Architect
 600 W Jackson Blvd #250, Chicago, IL 60661
 p. 312.798.7700 e. www.okw.com

Civil & Environmental Consultants, Inc. Civil Engineer
 555 Butterfield Road #300, Lombard, IL 60148
 p. 800.385.2324 e. www.cecon.com



NAPERVILLE LANDSCAPE REQUIREMENTS SUMMARY:

- PARKWAY LANDSCAPING:**
 FINE GRADED AND PLANTED WITH SOD
 TREES SPACED MAX. 40' O.C.; 2.5" CAL.; NO MORE THAN 5 TREES OF SAME SPECIES IN A ROW
 30' LINE-OF-SIGHT TRIANGLES AT INTERSECTIONS
- PERIMETER LANDSCAPING:**
 SOD OR PLANTING
 TREES SPACED MAX. 70' O.C.; 2.5" CAL.
- PERIMETER PARKING LOT LANDSCAPING:**
 MIN. 5' WIDE LANDSCAPE BUFFER
 MIN. 30' HEIGHT, CONTINUOUS PLANTING; 4' O.C.
- INTERIOR PARKING LOT LANDSCAPING:**
 MIN. 8' WIDTH ISLANDS (B.O.C. TO B.O.C.)
 MIN. 130 SF PER ISLAND
 EACH ISLAND REQUIRES (1) 2.5" CAL. SHADE TREE AND MIN. 50% PLANTINGS (NOT TO EXCEED 30' HEIGHT; NO THORNS)
- NOTE TO REVIEWER:**
 ALL LANDSCAPE PLANTS COMPLY WITH THE SEPARATION DISTANCES FROM UTILITY SERVICES - STRUCTURES AS REQUIRED BY THE NAPERVILLE CODE OF ORDINANCES: SUBSECTION 5-10-3.

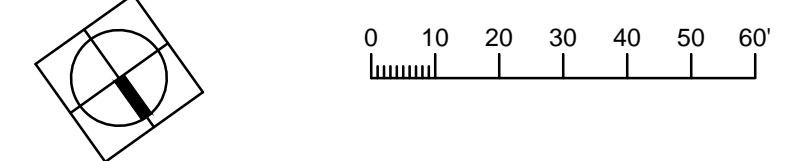
ISSUANCES

Rev. #	Description	Date Issued
01	PERMIT	04/25/2019
02	PERMIT REVISION	06/06/2019
03	PERMIT REVISION	07/09/2019
04	PERMIT REVISION	07/31/2019

- FOUNDATION LANDSCAPING:**
- SHALL CONSIST OF A MINIMUM RATIO OF ONE PLANT FOR EVERY (3) LINEAR FEET OF BUILDING LENGTH.
 - SHALL BE A COMBINATION OF DECIDUOUS SHRUBS, EVERGREENS, FLOWERS, ORNAMENTAL GRASSES, AND OTHER NATIVE GROUNDCOVERS.
 - SHALL BE LOCATED ADJACENT TO ALL SIDES OF BUILDINGS WHICH FACE A PUBLIC RIGHT OF WAY OR INTERNAL STREET ACCESS DRIVE.
 - SHALL BE MIN 2' WIDTH PLANTING BED.
- RETAIL A =
 208 LF FOUNDATION REQUIRED
 70 PLANTS REQUIRED
 404 PLANTS PROVIDED
- RETAIL B =
 236 LF FOUNDATION REQUIRED
 79 PLANTS REQUIRED
 91 PLANTS PROVIDED
- RETAIL C =
 342 LF FOUNDATION REQUIRED
 114 PLANTS REQUIRED
 172 PLANTS PROVIDED

PROPOSED VS REMOVED TREE DIFFERENTIAL:
 17 EXISTING TREES ARE TO BE REMOVED
 69 NEW TREES ARE PROPOSED
 52 NET INCREASE IN THE NUMBER OF TREES COMPARED TO EXISTING (BEFORE DEMOLITION)

1 PLANTING PLAN
 1" = 30'-0"



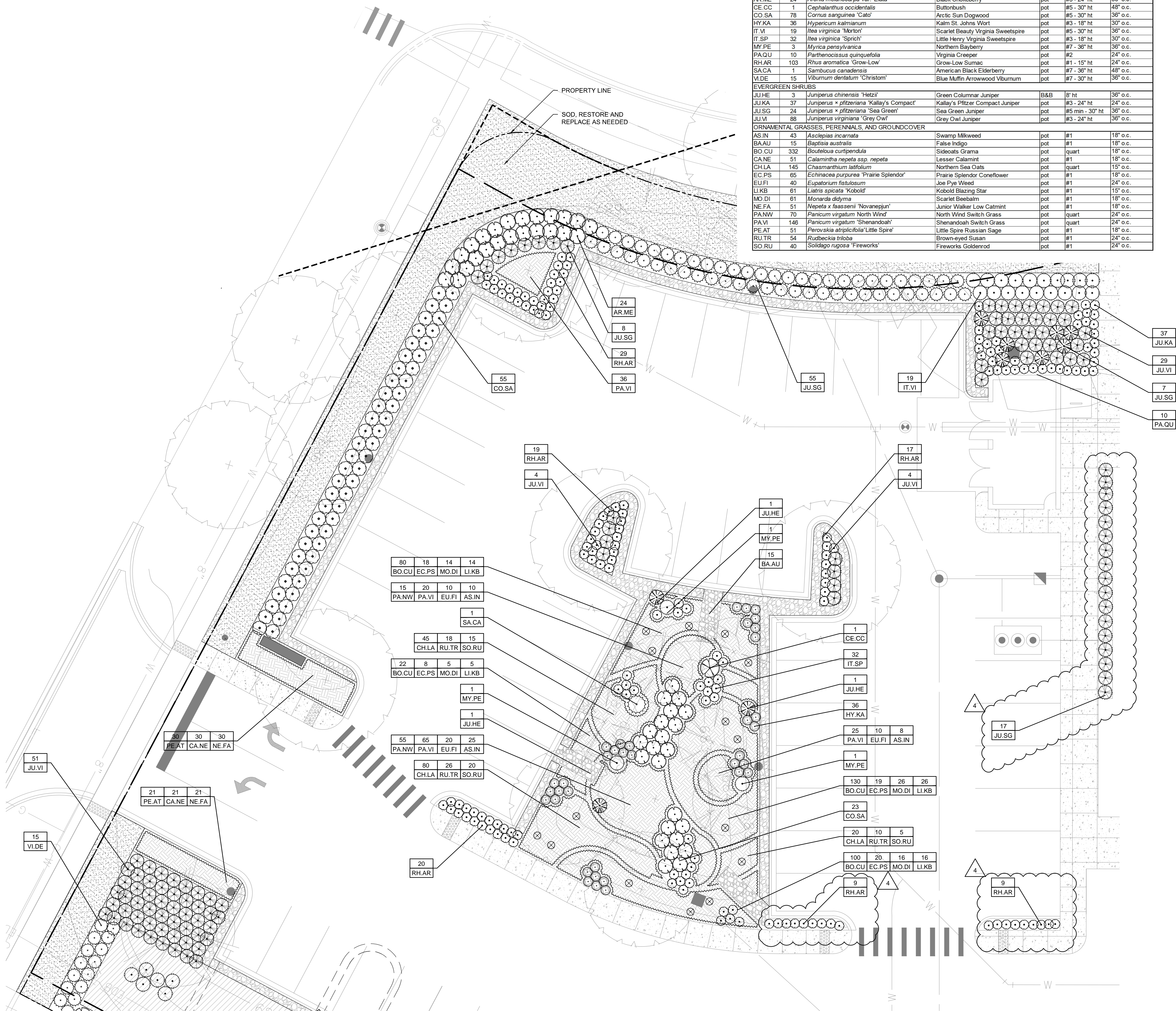
Drawing Number:

LA-02

CODE	QTY	BOTANICAL NAME	COMMON NAME	ROOT	SIZE	REMARKS
SHRUBS						
AR.ME	24	<i>Aronia melanocarpa</i> var. 'Elata'	Black Chokeberry	pot	#5 - 24" ht	36" o.c.
CE.CC	1	<i>Cephalanthus occidentalis</i>	Buttonbush	pot	#5 - 30" ht	48" o.c.
CO.SA	78	<i>Cornus sanguinea</i> 'Cato'	Arctic Sun Dogwood	pot	#5 - 30" ht	36" o.c.
HY.KA	36	<i>Hypericum kalimianum</i>	Kalm St. Johns Wort	pot	#3 - 18" ht	30" o.c.
IT.VI	19	<i>Itea virginica</i> 'Morton'	Scarlet Beauty Virginia Sweetspire	pot	#5 - 30" ht	36" o.c.
IT.SP	32	<i>Itea virginica</i> 'Sprich'	Little Henry Virginia Sweetspire	pot	#3 - 18" ht	30" o.c.
MY.PE	3	<i>Myrica pensylvanica</i>	Northern Bayberry	pot	#7 - 36" ht	36" o.c.
PA.QU	10	<i>Parthenocissus quinquefolia</i>	Virginia Creeper	pot	#2	24" o.c.
RH.AR	103	<i>Rhus aromatica</i> 'Grow-Low'	Grow-Low Sumac	pot	#1 - 15" ht	24" o.c.
SACA	1	<i>Sambucus canadensis</i>	American Black Elderberry	pot	#7 - 36" ht	48" o.c.
VI.DE	15	<i>Viburnum dentatum</i> 'Christom'	Blue Mufin Arrowwood Viburnum	pot	#7 - 30" ht	36" o.c.
EVERGREEN SHRUBS						
JU.HE	3	<i>Juniperus chinensis</i> 'Hetzl'	Green Columnar Juniper	B&B	8' ht	36" o.c.
JU.KA	37	<i>Juniperus x pfitzeniana</i> 'Kallay's Compact'	Kallay's Pfitzer Compact Juniper	pot	#3 - 24" ht	24" o.c.
JU.SG	24	<i>Juniperus x pfitzeniana</i> 'Sea Green'	Sea Green Juniper	pot	#5 min - 30" ht	36" o.c.
JU.VI	88	<i>Juniperus virginiana</i> 'Grey Owl'	Grey Owl Juniper	pot	#3 - 24" ht	36" o.c.
ORNAMENTAL GRASSES, PERENNIALS, AND GROUND COVER						
AS.IN	43	<i>Asclepias incarnata</i>	Swamp Milkweed	pot	#1	18" o.c.
BA.AU	15	<i>Baptisia australis</i>	False Indigo	pot	#1	18" o.c.
BO.CU	332	<i>Bouteloua curtipendula</i>	Sideoats Grama	pot	quart	18" o.c.
CANE	51	<i>Calaminta nepeta</i> ssp. <i>nepeta</i>	Lesser Calamint	pot	#1	18" o.c.
CH.LA	145	<i>Chasmanthium latifolium</i>	Northern Sea Oats	pot	quart	15" o.c.
EC.PS	65	<i>Echinacea purpurea</i> 'Prairie Splendor'	Prairie Splendor Coneflower	pot	#1	18" o.c.
EU.FI	40	<i>Eupatorium fistulosum</i>	Joe Eye Weed	pot	#1	24" o.c.
LI.KB	61	<i>Liatris spicata</i> 'Kobold'	Kobold Blazing Star	pot	#1	15" o.c.
MO.DI	61	<i>Monarda didyma</i>	Scarlet Beebalm	pot	#1	18" o.c.
NE.FA	51	<i>Nepeta x faassenii</i> 'Novaneppun'	Junior Walker Low Catmint	pot	#1	18" o.c.
PAN.W	70	<i>Panicum virgatum</i> 'North Wind'	North Wind Switch Grass	pot	quart	24" o.c.
PA.VI	146	<i>Panicum virgatum</i> 'Shenandoah'	Shenandoah Switch Grass	pot	quart	24" o.c.
PE.AT	51	<i>Perovskia atriplicifolia</i> 'Little Spire'	Little Spire Russian Sage	pot	#1	18" o.c.
RU.TR	54	<i>Rudbeckia triloba</i>	Brown-eyed Susan	pot	#1	24" o.c.
SO.RU	40	<i>Solidago rugosa</i> 'Fireworks'	Fireworks Goldenrod	pot	#1	24" o.c.

LEGEND

- PROPERTY LINE
- 4TH ORNAMENTAL METAL FENCE
- [Pattern] STABILIZED DECOMPOSED AGGREGATE
- [Pattern] PREMIUM HARDWOOD MULCH
- [Pattern] CONCRETE SIDEWALK, REFER TO CIVIL
- [Pattern] ORNAMENTAL GRASSES / PERENNIALS / GROUNDCOVERS W/ PREMIUM HARDWOOD MULCH
- [Pattern] SOD
- [Pattern] IDOT CLASS 3 NORTHERN ILLINOIS SLOPE SEED MIXTURE AND EROSION CONTROL BLANKET
- EXISTING TREE
- SHADE TREE
- ORNAMENTAL TREE
- SHRUBS
- FREESTANDING PLANTERS
- HOSE BIBB REFER TO MEP
- LIGHT POLE REFER TO MEP, CIVIL
- BIKE RACK



THE SHOPPES ON WASHINGTON

1001 S. Washington Street, Naperville, IL 60540

site landscape architecture urban design
 site design group, ltd.
 888 South Morgan Avenue #1000, Chicago, IL 60605
 p. 312.427.7249 e. www.sds-g.com
 Landscape Architect

OKW Architects, Inc. Architect
 600 W Jackson Blvd #250, Chicago, IL 60661
 p. 312.798.7700 e. www.okwarch.com

Civil & Environmental Consultants, Inc. Civil Engineer
 555 Butterfield Road #300, Lombard, IL 60148
 p. 800.385.2324 e. www.cecon.com



ISSUANCES

Rev. #	Description	Date Issued
01	PERMIT	04/25/2019
02	PERMIT REVISION	06/06/2019
03	PERMIT REVISION	07/09/2019
04	PERMIT REVISION	07/31/2019

Project No : 8496
 Drawn : LR File : 8496_plnt.dwg
 Checked : MJ Scale : AS NOTED
 Approved : BM

Sheet Title:
PLANTING PLAN ENLARGEMENT I

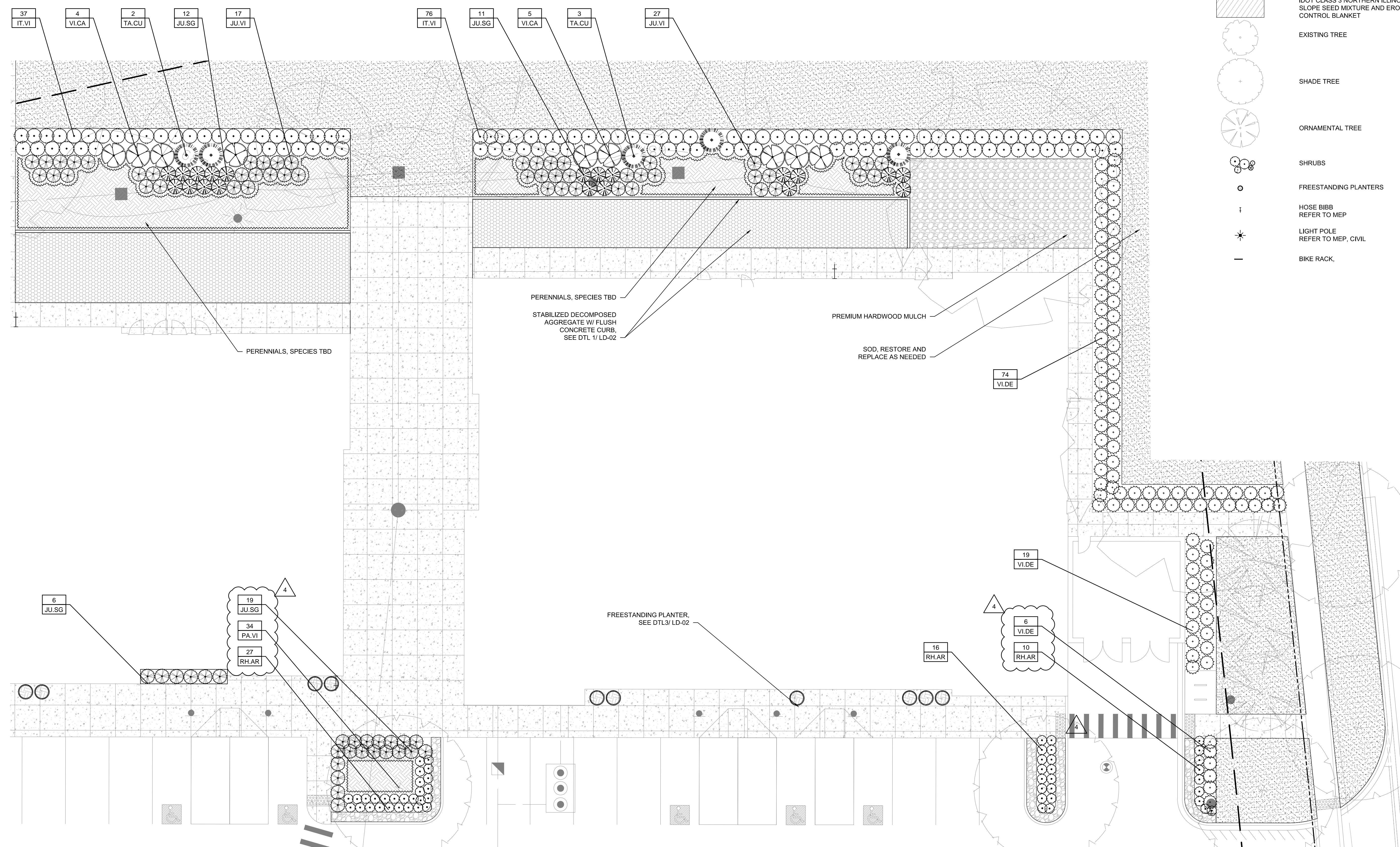
Drawing Number:
LA-02-01

1 PLANTING PLAN ENLARGEMENT I
 1" = 10'-0"
 0 5 10 15 20'

PLANT SCHEDULE						
CODE	QTY	BOTANICAL NAME	COMMON NAME	ROOT	SIZE	REMARKS
SHRUBS						
IT.VI	113	<i>Itea virginica</i> 'Morton'	Scarlet Beauty Virginia Sweetspire	pot	#5 - 30" ht	36" o.c.
RH.AR	53	<i>Rhus aromatica</i> 'Grow-Low'	Grow-Low Sumac	pot	#1 - 15" ht	24" o.c.
VI.CA	9	<i>Viburnum x carlicephalum</i> 'Cayuga'	Cayuga Viburnum	pot	#7 - 30" ht	60" o.c.
VI.DE	99	<i>Viburnum dentatum</i> 'Christom'	Blue Muffin Arrowwood Viburnum	pot	#7 - 30" ht	36" o.c.
EVERGREEN SHRUBS						
JU.SG	42	<i>Juniperus x pfitzeriana</i> 'Sea Green'	Sea Green Juniper	pot	#5 min - 30" ht	36" o.c.
JU.VI	44	<i>Juniperus virginiana</i> 'Grey Owl'	Grey Owl Juniper	pot	#3 - 24" ht	36" o.c.
TACU	5	<i>Taxus cuspidata</i> 'Capitata'	Japanese Yew	pot	#5 - 24" ht	60" o.c.
ORNAMENTAL GRASSES, PERENNIALS, AND GROUNDCOVER						
AG.FO		<i>Agastache foeniculum</i> 'Blue Fortune'	Blue Fortune Anise Hyssop	pot	#1	18" o.c.
BO.GR		<i>Bouteloua gracilis</i> 'Blonde Ambition'	Blonde Ambition Blue Grama Grass	pot	#1	18" o.c.
CA.NE		<i>Calamintha nepeta</i> ssp. <i>nepeta</i>	Lesser Calamint	pot	#1	18" o.c.
EC.PS		<i>Echinacea purpurea</i> 'Prairie Splendor'	Prairie Splendor Coneflower	pot	#1	18" o.c.
LI.KB		<i>Liatris spicata</i> 'Kobold'	Kobold Blazing Star	pot	#1	18" o.c.
NE.FA		<i>Nepeta x faassenii</i> 'Novanepun'	Junior Walker Low Catmint	pot	#1	18" o.c.
PA.VI	34	<i>Panicum virgatum</i> 'Shenandoah'	Shenandoah Switch Grass	pot	#1	24" o.c.
PE.AT		<i>Perovskia atriplicifolia</i>	Russian Sage	pot	#1	18" o.c.

LEGEND

- PROPERTY LINE
- 4TH ORNAMENTAL METAL FENCE
- ▨ STABILIZED DECOMPOSED AGGREGATE
- ▩ PREMIUM HARDWOOD MULCH
- ▧ CONCRETE SIDEWALK, REFER TO CIVIL
- ▦ ORNAMENTAL GRASSES / PERENNIALS / GROUNDCOVERS W/ PREMIUM HARDWOOD MULCH
- ▤ SOD
- ▣ IDOT CLASS 3 NORTHERN ILLINOIS SLOPE SEED MIXTURE AND EROSION CONTROL BLANKET
- EXISTING TREE
- SHADE TREE
- ORNAMENTAL TREE
- SHRUBS
- FREESTANDING PLANTERS
- ⊥ HOSE BIBB REFER TO MEP
- ⊛ LIGHT POLE REFER TO MEP, CIVIL
- BIKE RACK



THE SHOPPES ON WASHINGTON

1001 S. Washington Street, Naperville, IL 60540

site landscape architecture urban design
 site design group, ltd.
 888 South Morgan Avenue #1000, Chicago, IL 60605
 p. 312.427.7249 e. www.sds-g.com
 Landscape Architect

OKW Architects, Inc. Architect
 600 W Jackson Blvd #250, Chicago, IL 60661
 p. 312.798.7700 e. www.okwarch.com

Civil & Environmental Consultants, Inc. Civil Engineer
 555 Butterfield Road #300, Lombard, IL 60148
 p. 800.385.2324 e. www.cecon.com



ISSUANCES

Rev. #	Description	Date Issued
01	PERMIT	04/25/2019
02	PERMIT REVISION	06/06/2019
03	PERMIT REVISION	07/09/2019
04	PERMIT REVISION	07/31/2019

Project No : 8496
 Drawn : LR File : 8496_plnt.dwg
 Checked : MJ Scale : AS NOTED
 Approved : BM

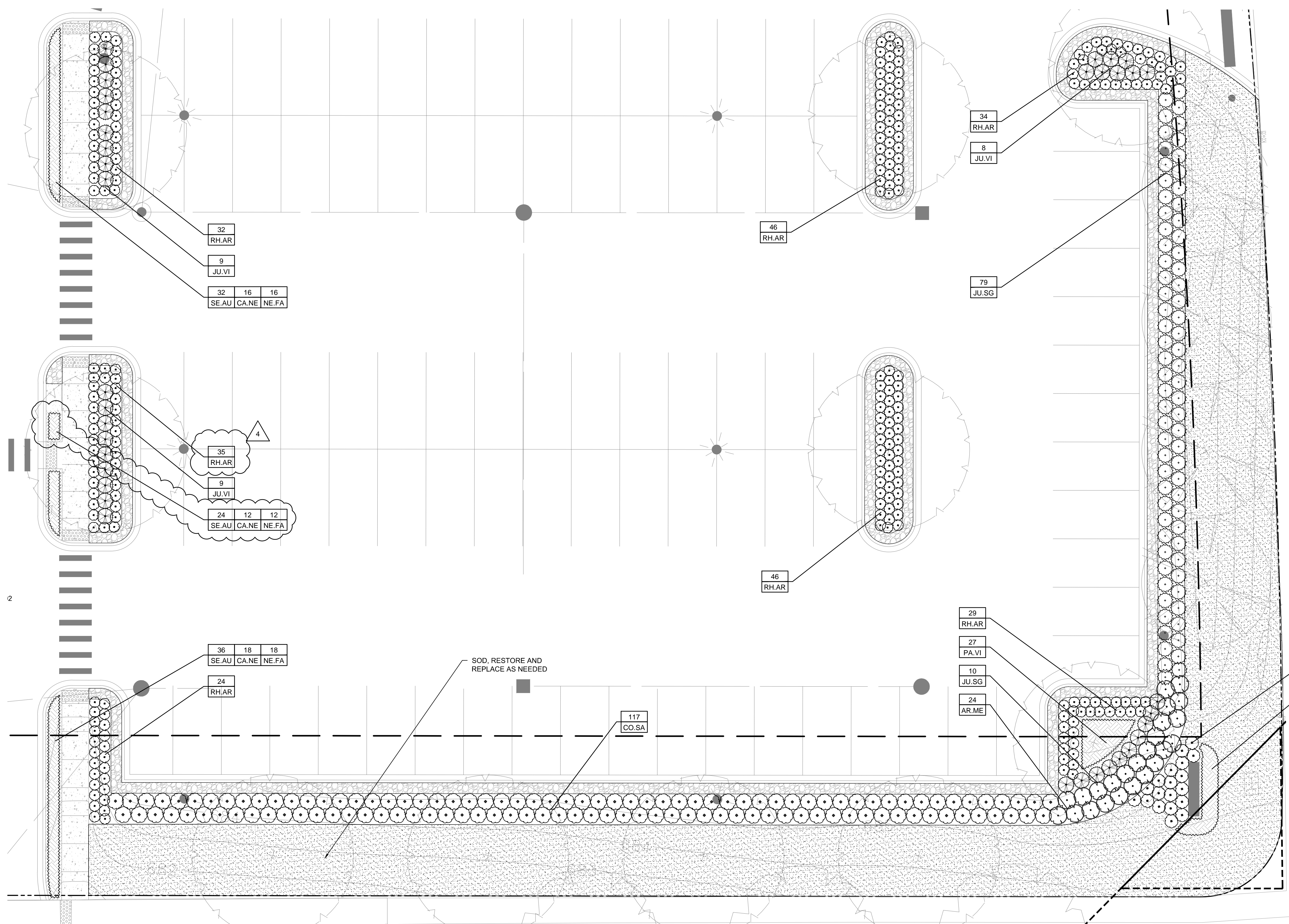
Sheet Title:
PLANTING PLAN ENLARGEMENT II

Drawing Number:
LA-02-02

PLANT SCHEDULE						
CODE	QTY	BOTANICAL NAME	COMMON NAME	ROOT	SIZE	REMARKS
SHRUBS						
AR.ME	24	<i>Aronia melanocarpa</i> var. 'Elate'	Black Chokeberry	pot	#5	36" o.c.
CO.SA	117	<i>Cornus sanguinea</i> 'Cato'	Arctic Sun Dogwood	pot	#5 - 30" ht	36" o.c.
IT.SP	19	<i>Itea virginica</i> 'Sprich'	Little Henry Virginia Sweetspire	pot	#3 - 18" ht	30" o.c.
RH.AR	382	<i>Rhus aromatica</i> 'Grow-Low'	Grow-Low Sumac	pot	#1 - 15" ht	24" o.c.
EVERGREEN SHRUBS						
JU.SG	89	<i>Juniperus x pfitzeriana</i> 'Sea Green'	Sea Green Juniper	pot	#5 min - 30" ht	36" o.c.
JU.VI	26	<i>Juniperus virginiana</i> 'Grey Owl'	Grey Owl Juniper	pot	#3 - 24" ht	36" o.c.
ORNAMENTAL GRASSES, PERENNIALS, AND GROUNDCOVER						
CA.NE	62	<i>Calamintha nepeta</i> ssp. <i>nepeta</i>	Lesser Calamint	pot	#1	18" o.c.
NE.FA	62	<i>Nepeta x faassenii</i> 'Novanepun'	Junior Walker Low Calmint	pot	#1	18" o.c.
PA.VI	27	<i>Panicum virgatum</i> 'Shenandoah'	Shenandoah Switch Grass	pot	#1	24" o.c.
PE.AT	14	<i>Perovskia atriplicifolia</i>	Russian Sage	pot	#1	18" o.c.
SE.AU	96	<i>Sesleria autumnalis</i>	Autumn Moor Grass	pot	#1	15" o.c.

LEGEND

- PROPERTY LINE
- 4TH ORNAMENTAL METAL FENCE
- [Pattern] STABILIZED DECOMPOSED AGGREGATE
- [Pattern] PREMIUM HARDWOOD MULCH
- [Pattern] CONCRETE SIDEWALK, REFER TO CIVIL
- [Pattern] ORNAMENTAL GRASSES / PERENNIALS / GROUNDCOVERS W/ PREMIUM HARDWOOD MULCH
- [Pattern] SOD
- [Pattern] IDOT CLASS 3 NORTHERN ILLINOIS SLOPE SEED MIXTURE AND EROSION CONTROL BLANKET
- EXISTING TREE
- SHADE TREE
- ORNAMENTAL TREE
- SHRUBS
- FREESTANDING PLANTERS
- ↑ HOSE BIBB REFER TO MEP
- ★ LIGHT POLE REFER TO MEP, CIVIL
- BIKE RACK



THE SHOPPES ON WASHINGTON

1001 S. Washington Street, Naperville, IL 60540

site landscape architecture urban design
 site design group, ltd.
 888 South Morgan Avenue #1000, Chicago, IL 60605
 p. 312.427.7249 e. www.sdsdesign.com
 Landscape Architect

OKW Architects, Inc. Architect
 600 W Jackson Blvd #250, Chicago, IL 60661
 p. 312.798.7700 e. www.okwarch.com

Civil & Environmental Consultants, Inc. Civil Engineer
 555 Butterfield Road #300, Lombard, IL 60148
 p. 800.385.2324 e. www.cecon.com



ISSUANCES

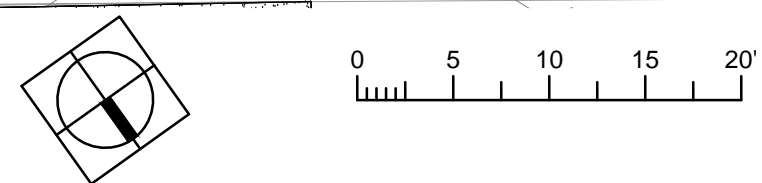
Rev. #	Description	Date Issued
01	PERMIT	04/25/2019
02	PERMIT REVISION	06/06/2019
03	PERMIT REVISION	07/09/2019
04	PERMIT REVISION	07/31/2019

Project No : 8496
 Drawn : LR File : 8496_plnt.dwg
 Checked : MJ Scale : AS NOTED
 Approved : BM

Sheet Title:
PLANTING PLAN ENLARGEMENT III

Drawing Number:
LA-02-03

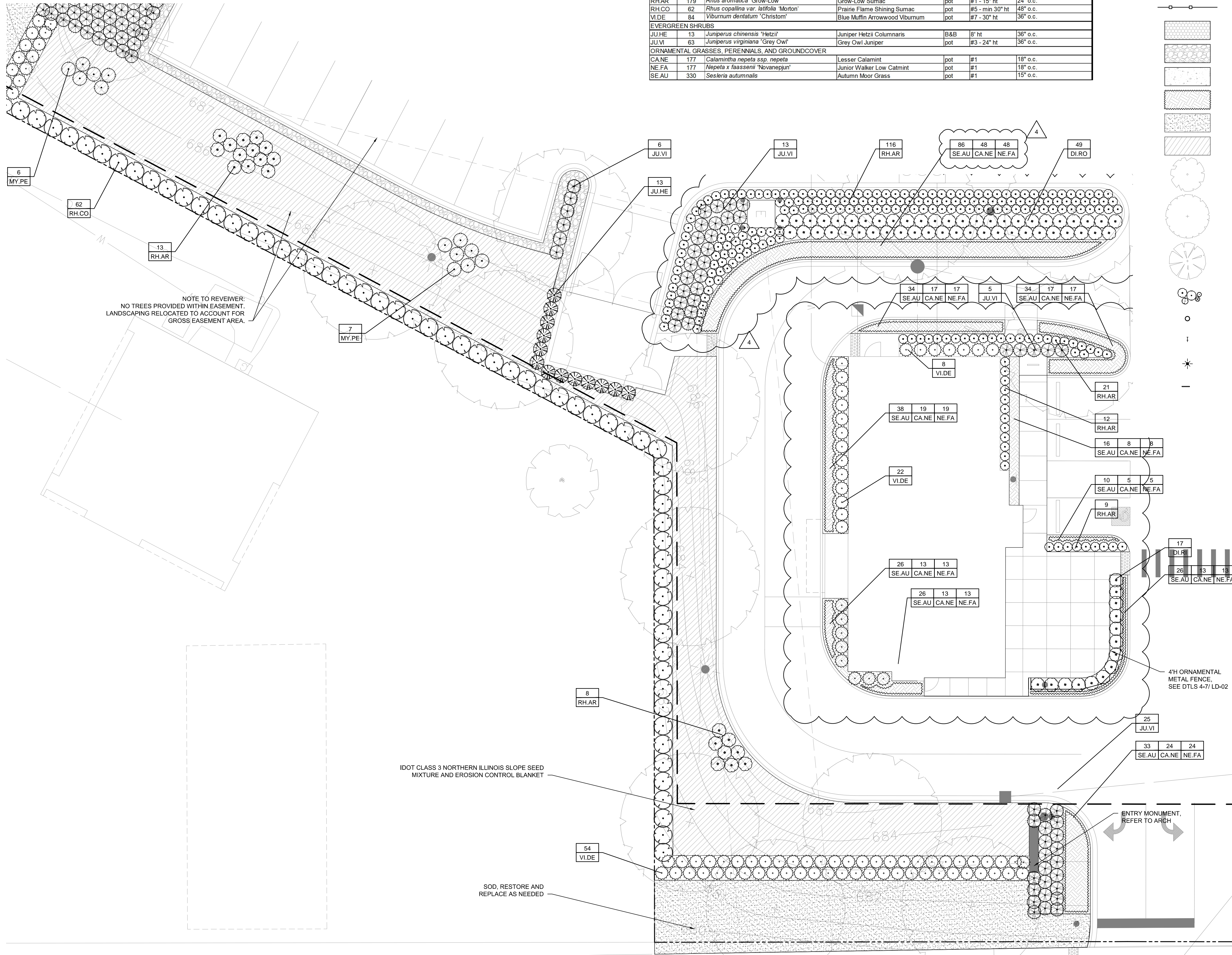
1 PLANTING PLAN ENLARGEMENT III
 1" = 10'-0"



PLANT SCHEDULE						
CODE	QTY	BOTANICAL NAME	COMMON NAME	ROOT	SIZE	REMARKS
SHRUBS						
DI.RO	66	<i>Diervilla rivularis</i> 'G2X885411'	Kodiak Red Diervilla	pot	#5 - 30" ht	36" o.c.
MY.PE	13	<i>Myrica pensylvanica</i>	Northern Bayberry	pot	#7 - 36" ht	36" o.c.
RH.AR	179	<i>Rhus aromatica</i> 'Grow-Low'	Grow-Low Sumac	pot	#1 - 15" ht	24" o.c.
RH.CO	62	<i>Rhus copallina</i> var. <i>latifolia</i> 'Morton'	Prairie Flame Shining Sumac	pot	#5 - min 30" ht	48" o.c.
VI.DE	84	<i>Viburnum dentatum</i> 'Christom'	Blue Muffin Arrowwood Viburnum	pot	#7 - 30" ht	36" o.c.
EVERGREEN SHRUBS						
JU.HE	13	<i>Juniperus chinensis</i> 'Hetzii'	Juniper Hetzii Columnaris	B&B	8' ht	36" o.c.
JU.VI	63	<i>Juniperus virginiana</i> 'Grey Owl'	Grey Owl Juniper	pot	#3 - 24" ht	36" o.c.
ORNAMENTAL GRASSES, PERENNIALS, AND GROUNDCOVER						
CA.NE	177	<i>Calamintha nepeta</i> ssp. <i>nepeta</i>	Lesser Calamint	pot	#1	18" o.c.
NE.FA	177	<i>Nepeta x faassenii</i> 'Novanepjun'	Junior Walker Low Catmint	pot	#1	18" o.c.
SE.AU	330	<i>Sesleria autumnalis</i>	Autumn Moor Grass	pot	#1	15" o.c.

LEGEND

- PROPERTY LINE
- 4" ORNAMENTAL METAL FENCE
- STABILIZED DECOMPOSED AGGREGATE
- PREMIUM HARDWOOD MULCH
- CONCRETE SIDEWALK, REFER TO CIVIL
- ORNAMENTAL GRASSES / PERENNIALS / GROUNDCOVERS W/ PREMIUM HARDWOOD MULCH
- SOD
- IDOT CLASS 3 NORTHERN ILLINOIS SLOPE SEED MIXTURE AND EROSION CONTROL BLANKET
- EXISTING TREE
- SHADE TREE
- ORNAMENTAL TREE
- SHRUBS
- FREESTANDING PLANTERS
- HOSE BIBB REFER TO MEP
- LIGHT POLE REFER TO MEP, CIVIL
- BIKE RACK



THE SHOPPES ON WASHINGTON

1001 S. Washington Street, Naperville, IL 60540

sitē landscape architecture urban design
 site design group, ltd.
 888 South Morgan Avenue #1000, Chicago, IL 60605
 p. 312.427.7249 e. www.sitē-design.com
 Landscape Architect

OKW Architects, Inc. Architect
 600 W Jackson Blvd #250, Chicago, IL 60661
 p. 312.798.7700 e. www.okw.com

Civil & Environmental Consultants, Inc. Civil Engineer
 555 Butterfield Road #300, Lombard, IL 60148
 p. 800.385.2324 e. www.cecon.com



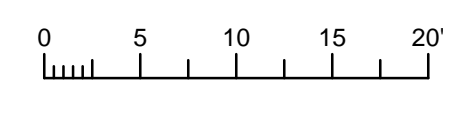
ISSUANCES

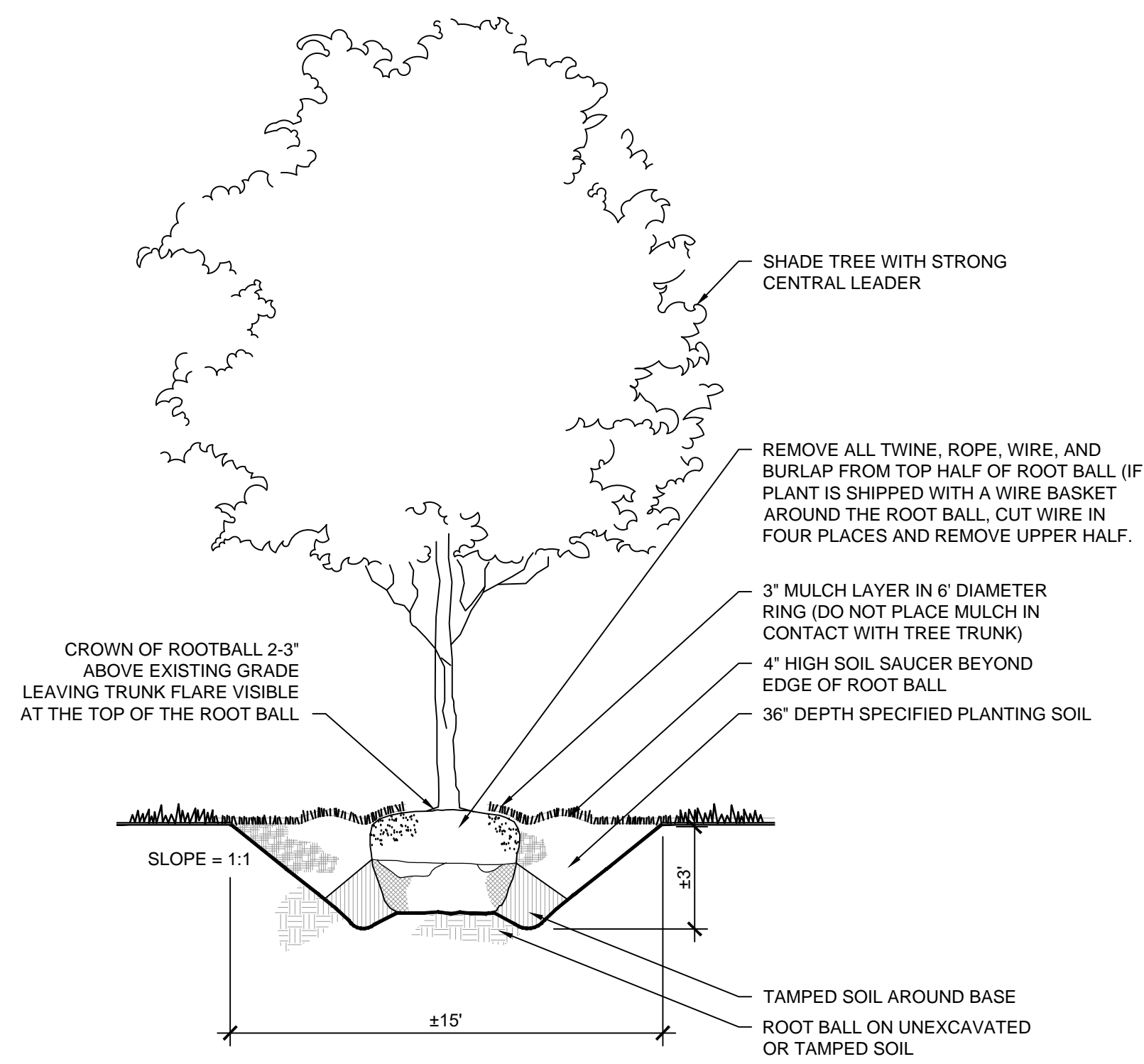
Rev. #	Description	Date Issued
01	PERMIT	04/25/2019
02	PERMIT REVISION	06/06/2019
03	PERMIT REVISION	07/09/2019
04	PERMIT REVISION	07/31/2019

Project No : 8496
 Drawn : LR File : 8496_plnt.dwg
 Checked : MJ Scale : AS NOTED
 Approved : BM

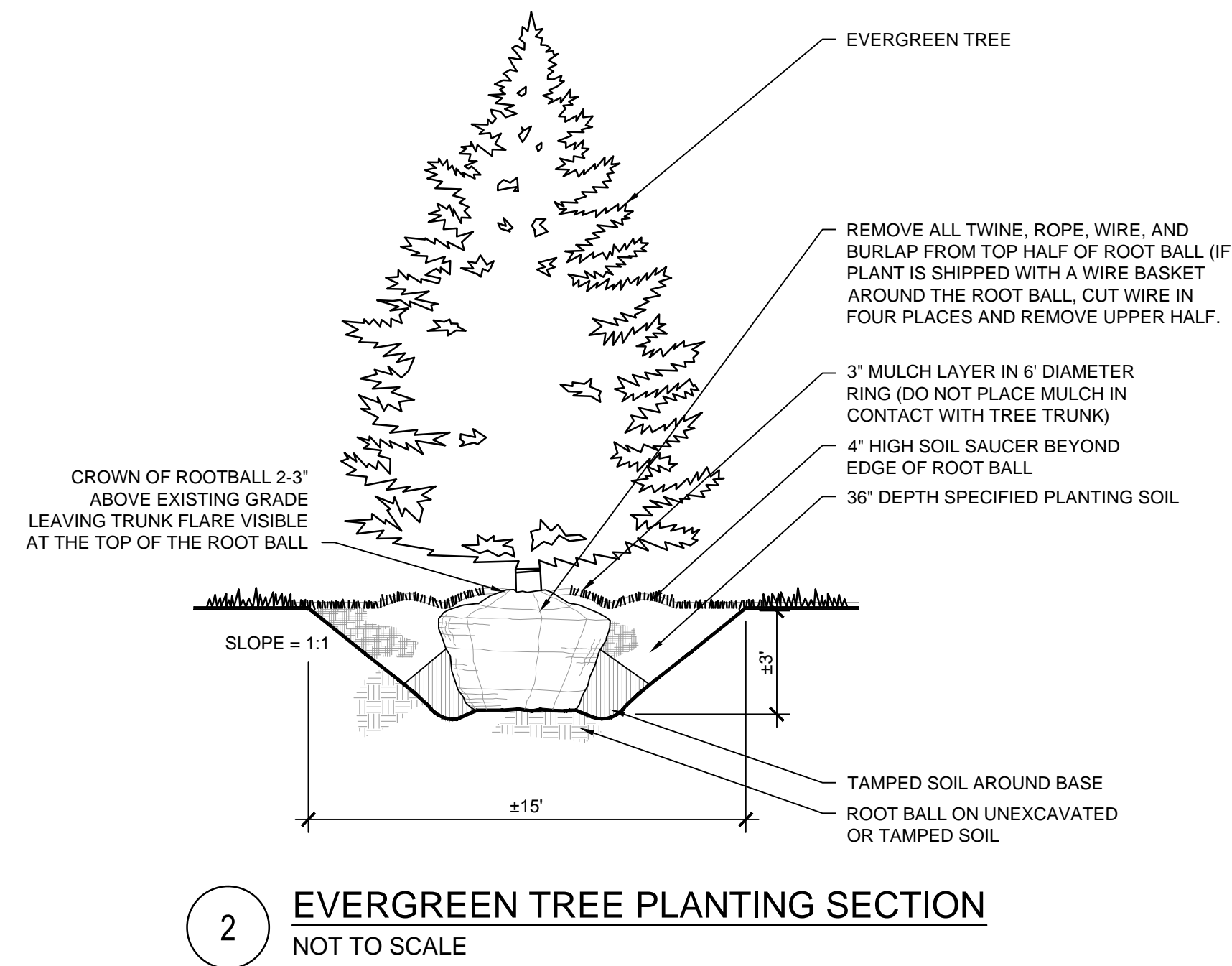
Sheet Title:
PLANTING PLAN ENLARGEMENT IV

Drawing Number:
LA-02-04

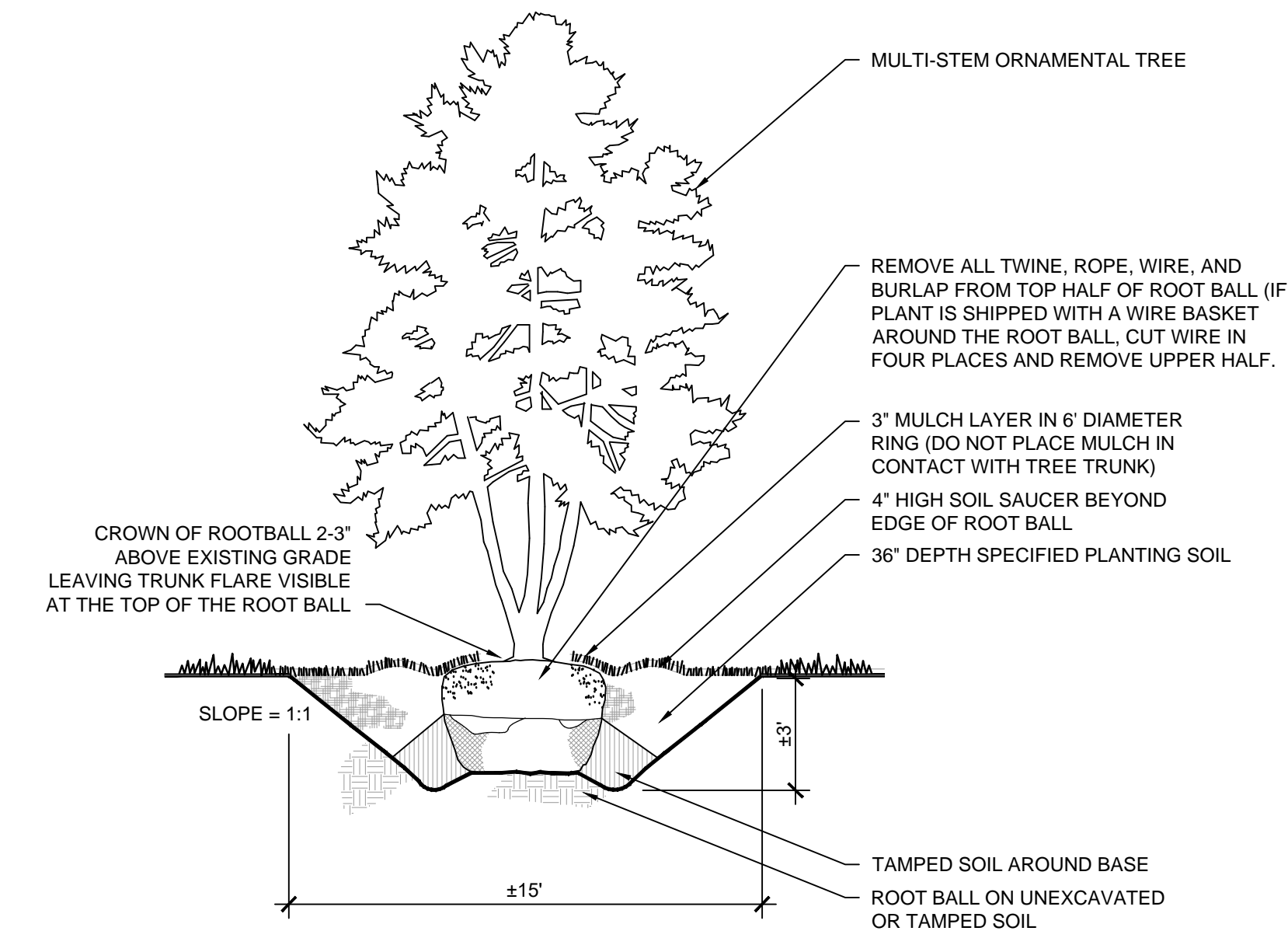




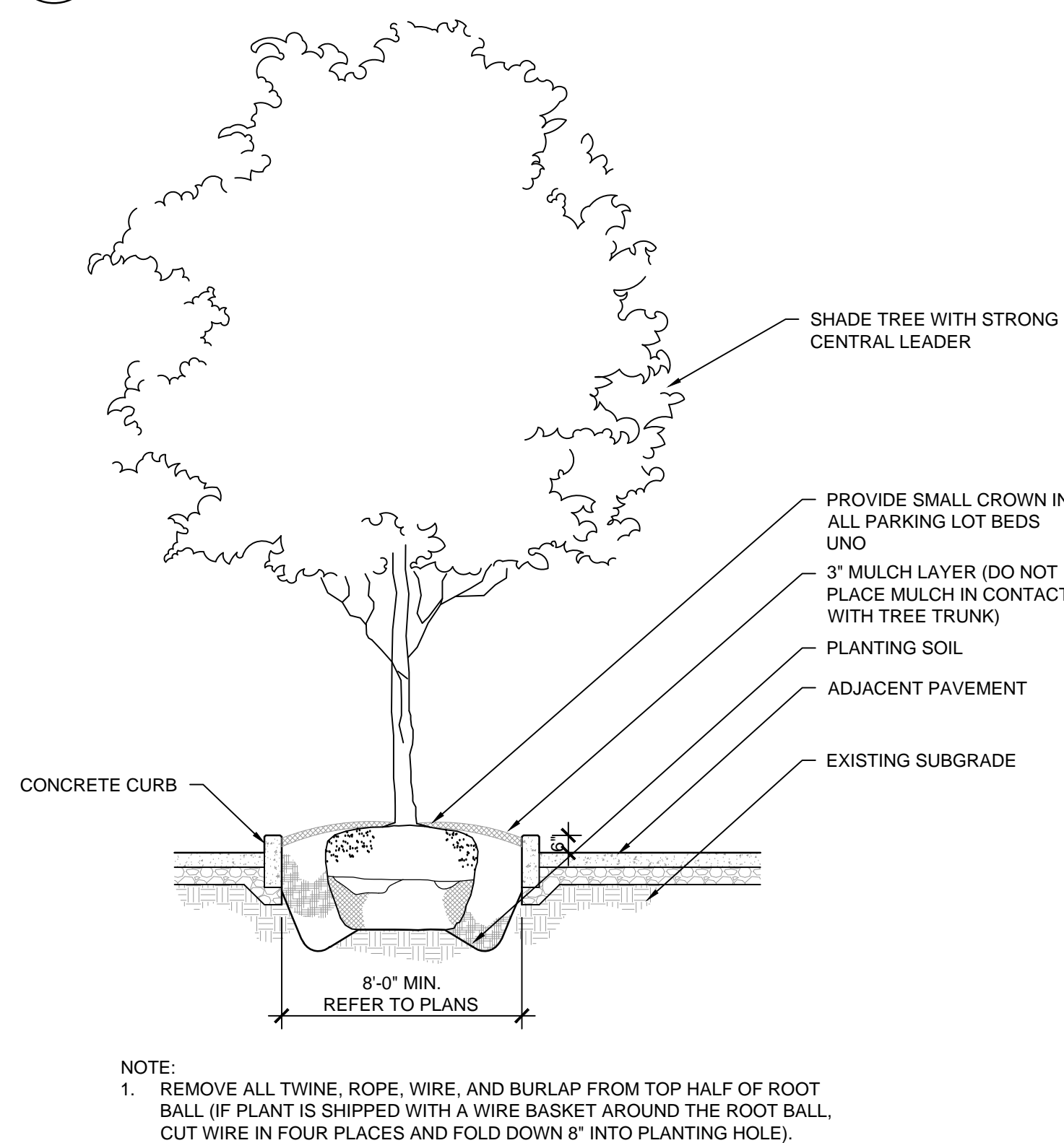
1 DECIDUOUS TREE PLANTING SECTION
NOT TO SCALE



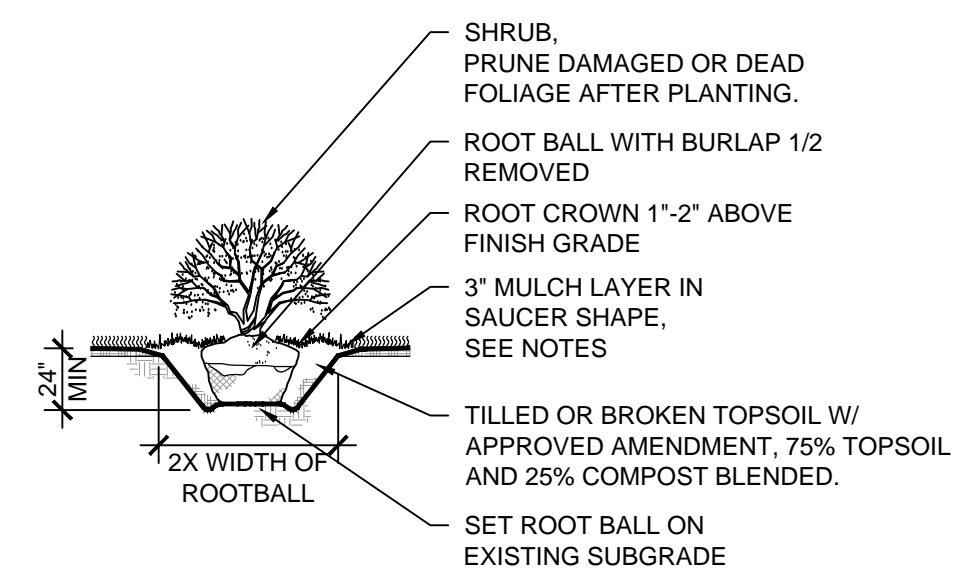
2 EVERGREEN TREE PLANTING SECTION
NOT TO SCALE



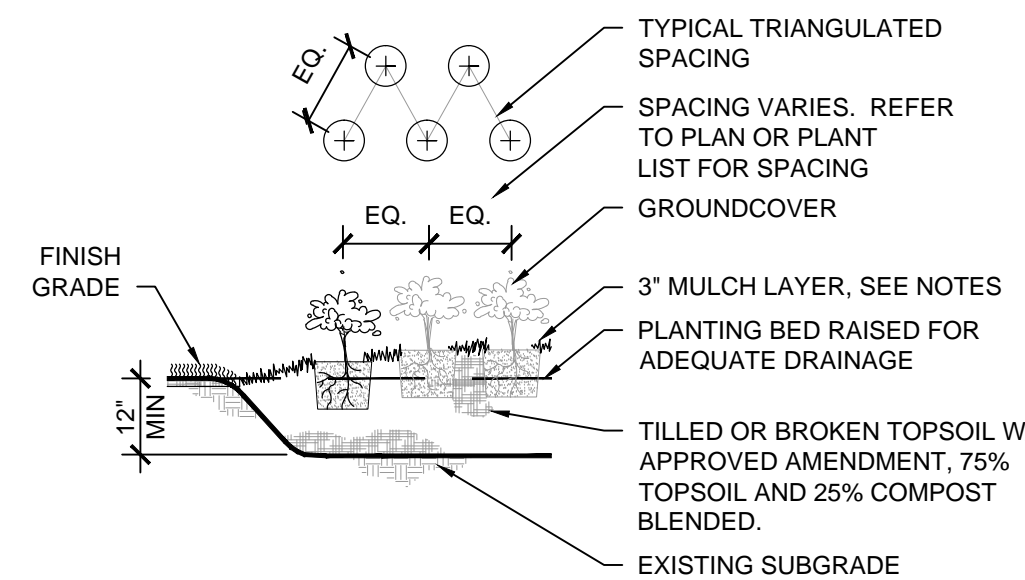
3 ORNAMENTAL TREE PLANTING SECTION
NOT TO SCALE



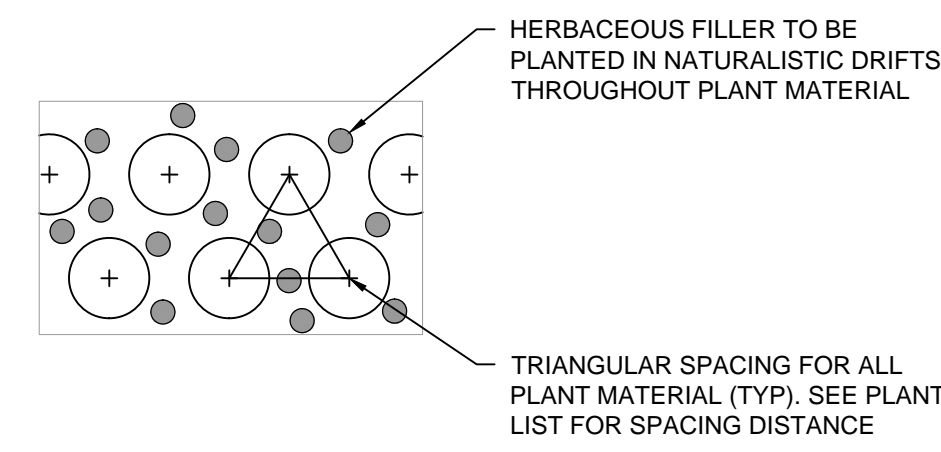
4 SHADE TREE IN ISLAND SECTION
NOT TO SCALE



5 SHRUB PLANTING SECTION
NOT TO SCALE



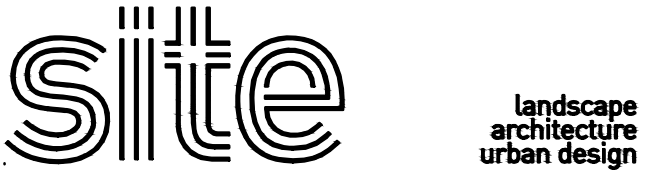
6 PERENNIAL PLANTING SECTION
NOT TO SCALE



7 INTERPLANTING DETAIL
NOT TO SCALE

THE SHOPPES ON WASHINGTON

1001 S. Washington Street, Naperville, IL 60540



site design group, llc
188 South Morgan Avenue #1000, Chicago, IL 60605
p. 312.427.7249 w. www.site-design.com

OKW Architects, Inc. Architect
600 W Jackson Blvd #250, Chicago, IL 60661
p. 312.798.7700 w. www.okwarch.com

Civil & Environmental Consultants, Inc. Civil Engineer
555 Butterfield Road #300, Lombard, IL 60148
p. 800.365.2324 w. www.cecon.com



28278

ISSUANCES

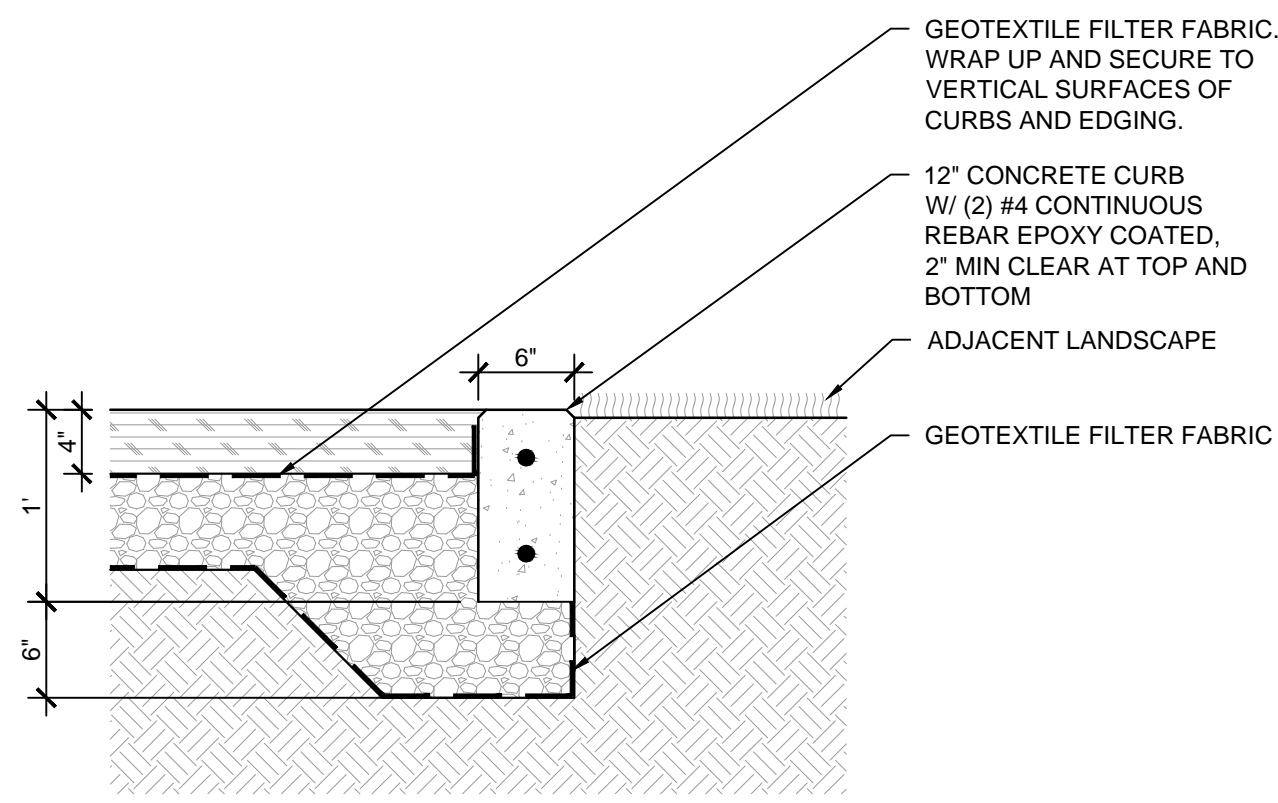
Rev. #	Description	Date Issued
01	PERMIT	04/25/2019
02	PERMIT REVISION	06/06/2019
03	PERMIT REVISION	07/09/2019
04	PERMIT REVISION	07/31/2019

Project No : 8496
Drawn : LR File : 8496_detl_land.dwg
Checked : MJ Scale : AS NOTED
Approved : BM

Sheet Title:
PLANTING DETAILS

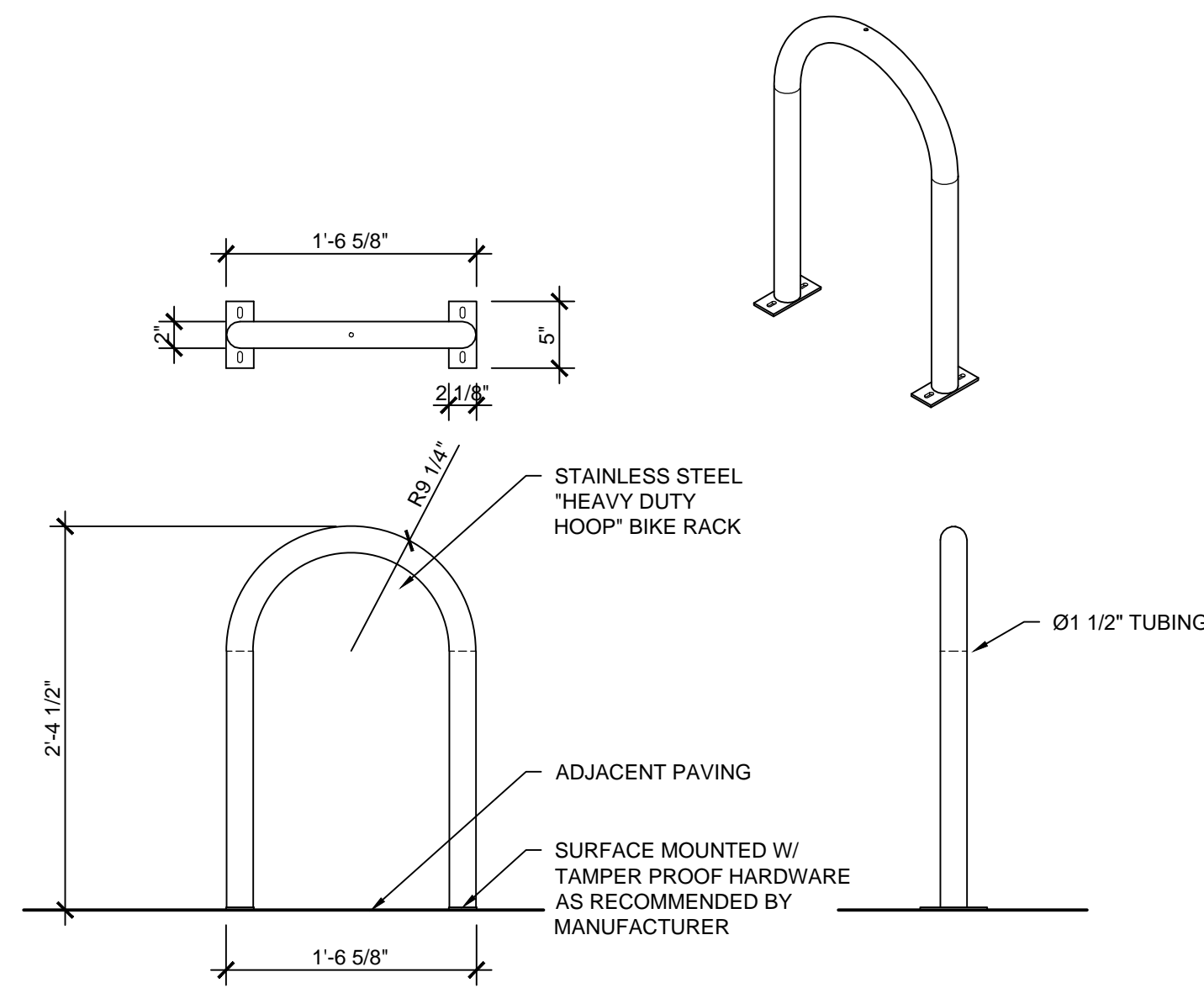
Drawing Number:

LD-01

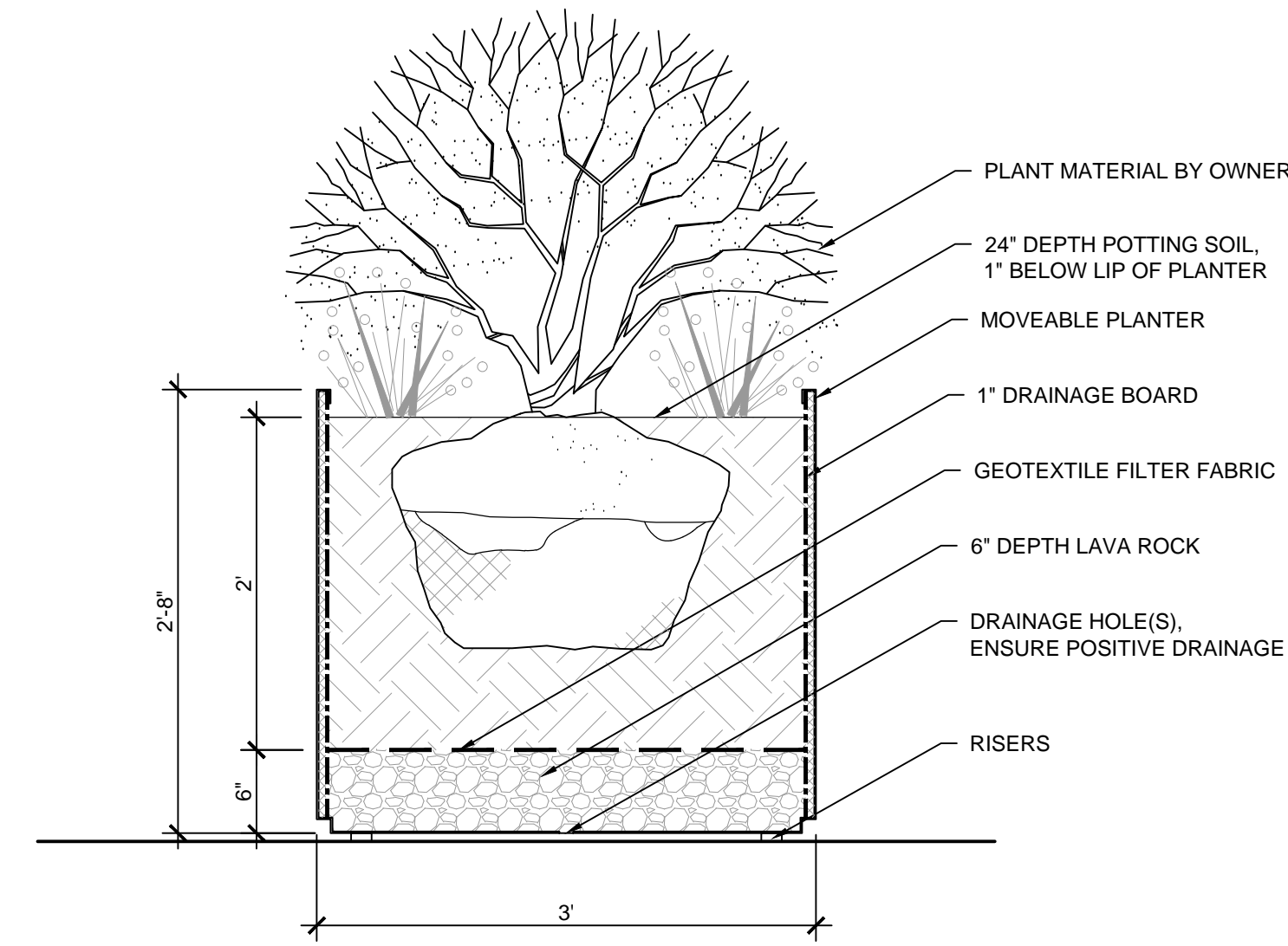


NOTE:
1. INSTALL STABILIZED DECOMPOSED AGGREGATE PER MANUFACTURER'S RECOMMENDED INSTALLATION INSTRUCTIONS.

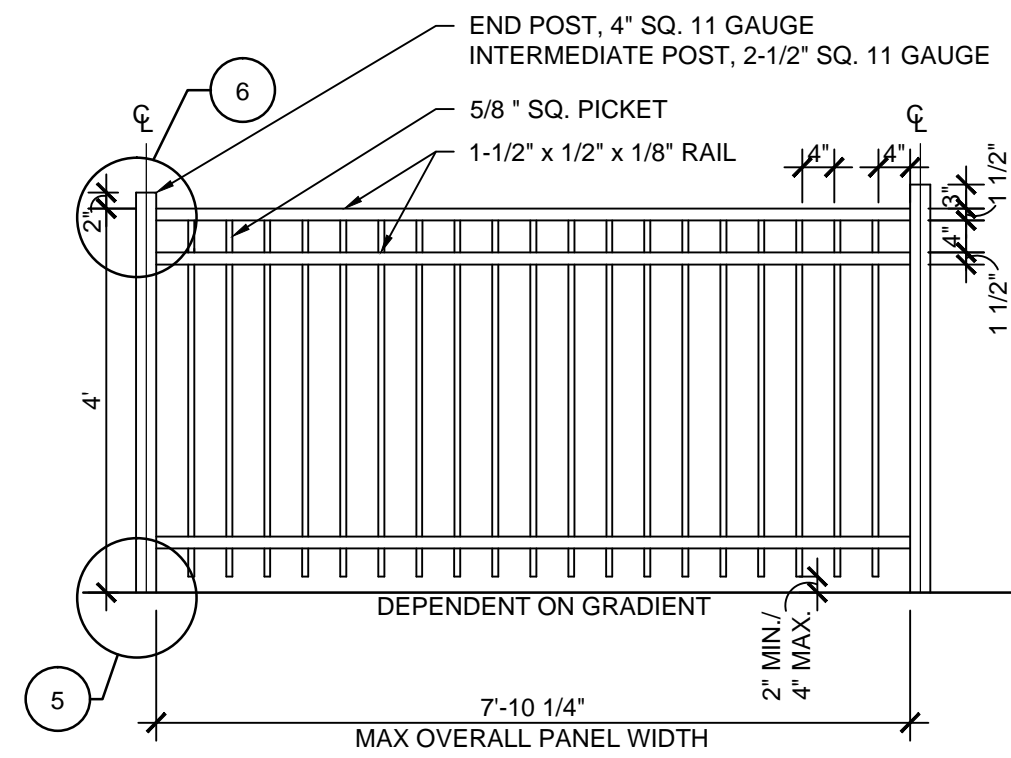
1 STABILIZED DECOMPOSED AGGREGATE 6"W FLUSH CONCRETE CURB SECTION
1" = 1'-0"



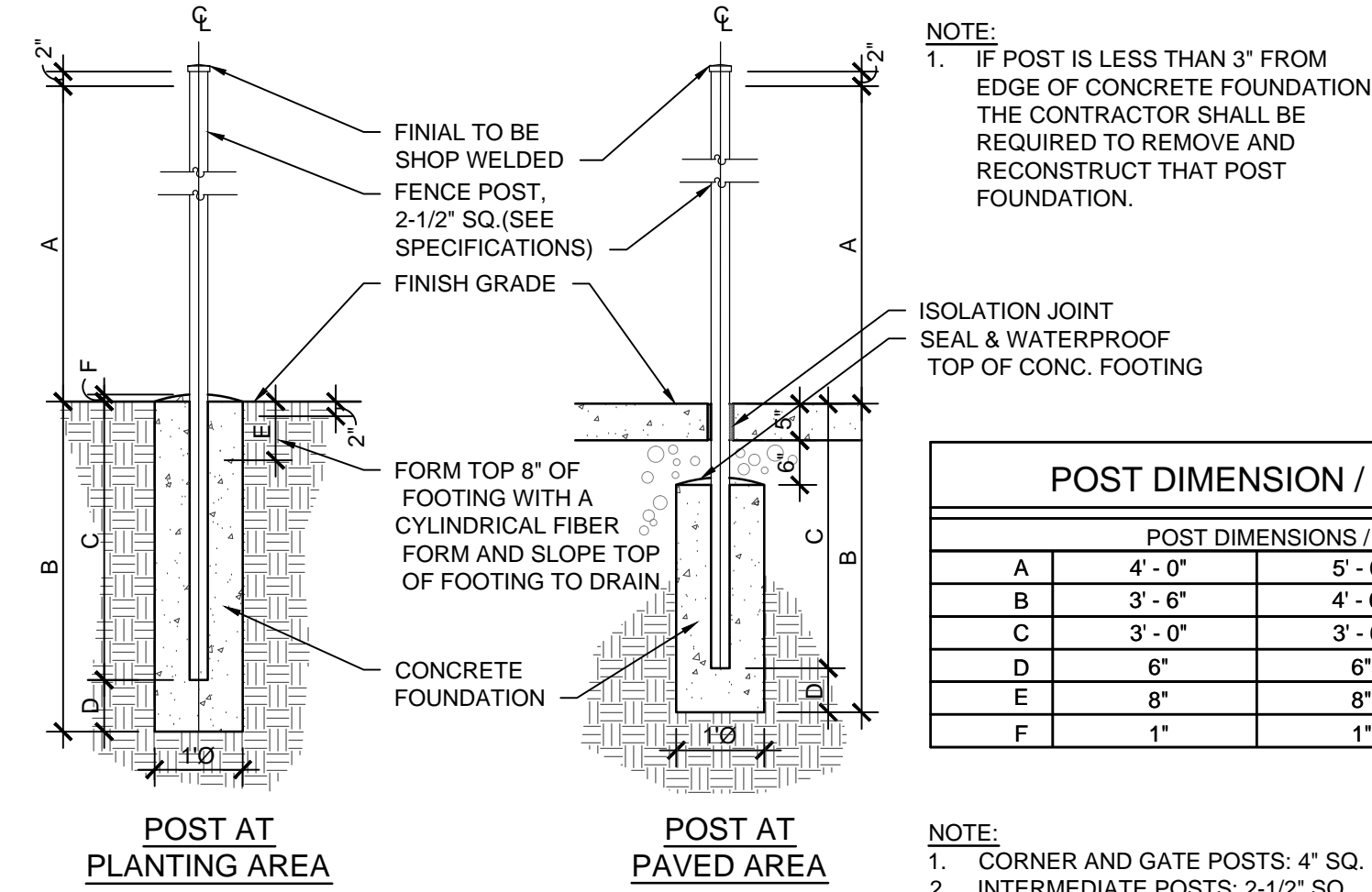
2 BIKE RACK DETAIL
1" = 1'-0"



3 FREESTANDING PLANTER DETAIL
1" = 1'-0"



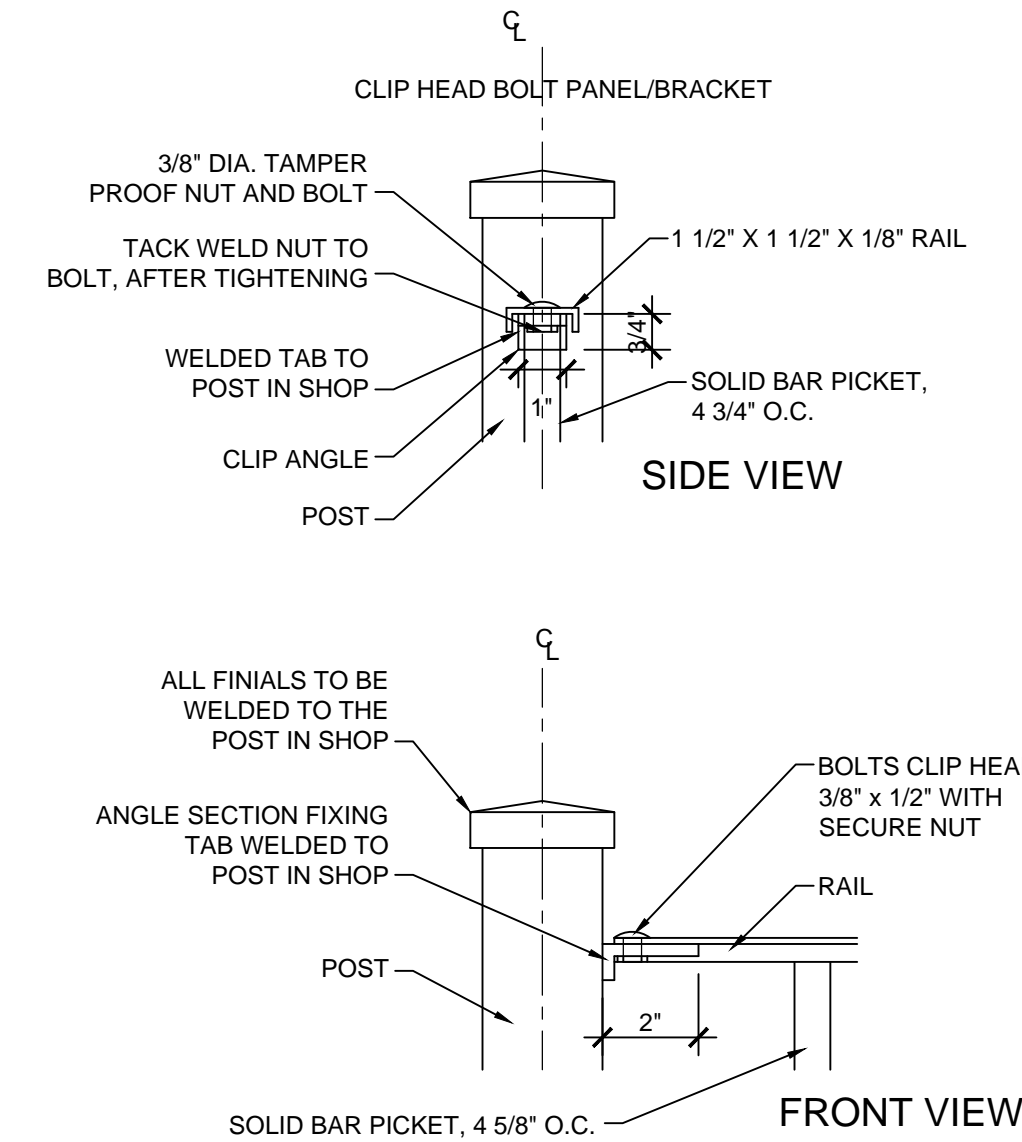
4 4'H ORNAMENTAL METAL FENCE DETAIL
1/2" = 1'-0"



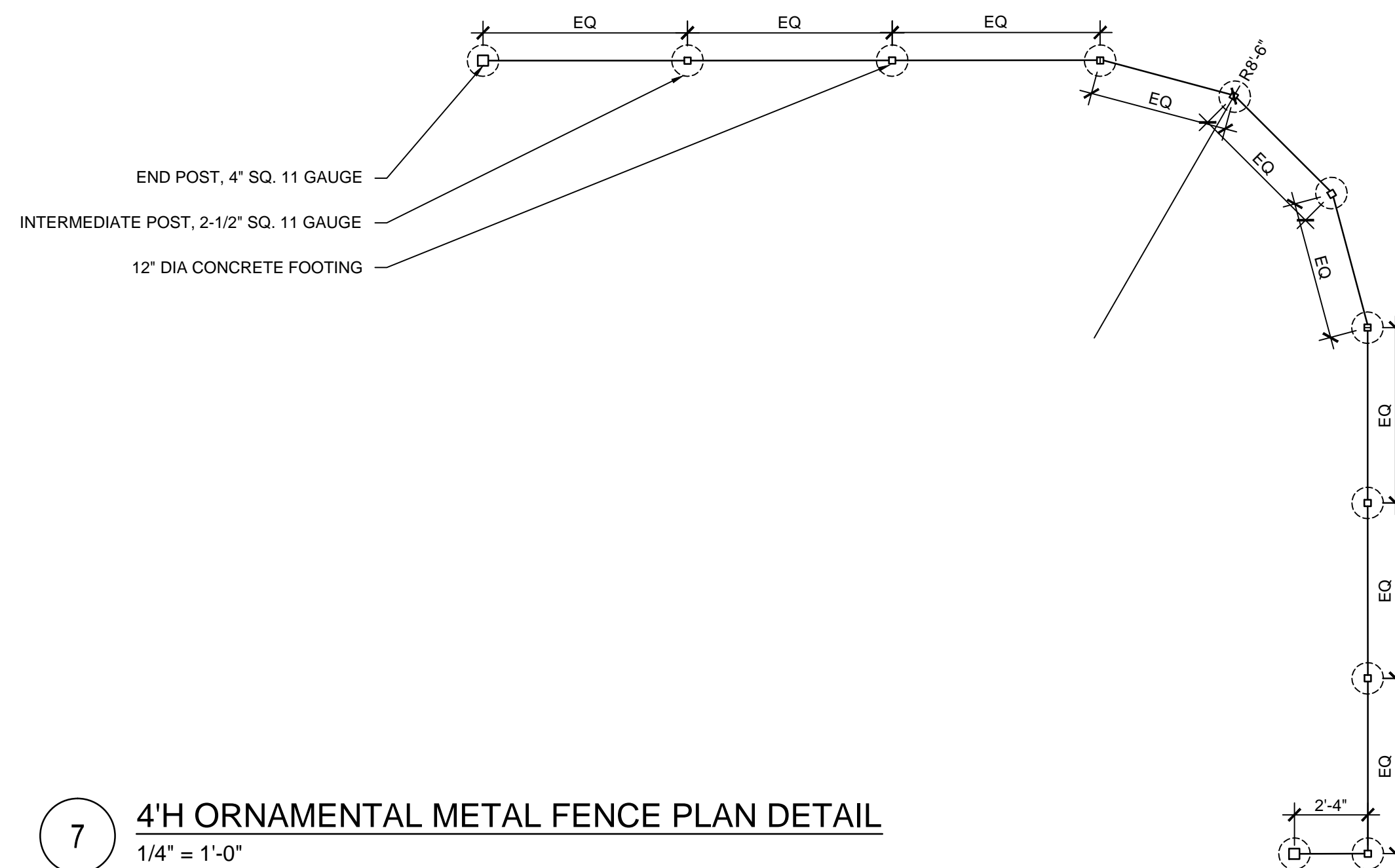
5 FENCE POST FOOTING DETAIL
1/2" = 1'-0"

POST DIMENSION / FOOTING DEPTH				
	POST DIMENSIONS / FOOTING DEPTH			
A	4' - 0"	5' - 0"	6' - 0"	8' - 0"
B	3' - 6"	4' - 0"	4' - 6"	5' - 6"
C	3' - 0"	3' - 6"	4' - 0"	5' - 0"
D	6"	6"	6"	6"
E	8"	8"	8"	8"
F	1"	1"	1"	1"

NOTE:
1. CORNER AND GATE POSTS: 4" SQ.
2. INTERMEDIATE POSTS: 2-1/2" SQ.



6 POST CAP DETAIL
3" = 1'-0"



7 4'H ORNAMENTAL METAL FENCE PLAN DETAIL
1/4" = 1'-0"

GENERAL FENCING NOTES:

- CONTRACTOR TO VERIFY STRUCTURAL DESIGN OF FENCING. FENCES SHALL BE DESIGNED AND CONSTRUCTED TO RESIST A HORIZONTAL WIND PRESSURE OF NOT LESS THAN 30 POUNDS PER SQUARE FOOT IN ADDITION TO ALL OTHER FORCES TO WHICH THEY MAY BE SUBJECTED.
- SUBMIT COMPLETE FABRICATION AND INSTALLATION DRAWINGS. SHOW PLAN LAYOUT INCLUDING LOCATION OF FENCING AND GATE POSTS, ADJUSTMENT PANELS AND DETAILS OF POST INSTALLATION, EXPANSION JOINTS AND WELDING DETAILS.
- MAINTAIN CONSISTENT ELEVATION OF TOP RAIL FOR FENCE PANEL AND GATES.
- ALL FENCE OPERABLE HARDWARE SHALL COMPLY WITH ANSI A1171-2003 SECTION 3094 OPERATION AND 3093 HEIGHT AND 3092 CLEAR FLOOR SPACE, AND CPS CHILDREN'S STANDARDS.

THE SHOPPES ON WASHINGTON

1001 S. Washington Street, Naperville, IL 60540



site design group, ltd.
188 South Morgan Avenue #100, Chicago, IL 60605
p. 312.427.7249 w. www.site-design.com

OKW Architects, Inc. Architect
600 W Jackson Blvd #250, Chicago, IL 60661
p. 312.798.7700 w. www.okwarchitects.com

Civil & Environmental Consultants, Inc. Civil Engineer
555 Butterfield Road #300, Lombard, IL 60148
p. 800.385.2324 w. www.cecon.com



2/20/18

ISSUANCES

Rev. #	Description	Date Issued
01	PERMIT	04/25/2019
02	PERMIT REVISION	06/06/2019
03	PERMIT REVISION	07/09/2019
04	PERMIT REVISION	07/31/2019

Project No : 8496
Drawn : LR File : 8496_dett_land.dwg
Checked : MJ Scale : AS NOTED
Approved : BM

Sheet Title:
LANDSCAPE DETAILS

Drawing Number:

LD-02