

ABBREVIATIONS

ACT.	ACUSTICAL TILE	INFO.	INFORMATION
A.F.F.	ABOVE FIN. FLR.	INSUL.	INSULATION
ALUM.	ALUMINUM	INT.	INTERIOR
ALT.	ALTERNATE	JT.	JOINT
BL.	BLOCK	MANU.	MANUFACTURED
BLDG.	BUILDING	MAS.	MASONRY
BLKG.	BLOCKING	MAT.	MATERIAL
BRG.	BEARING	M.C.	MINISTRY CENTER
B.PL.	BEARING PLATE	MECH.	MECHANICAL
CAB.	CABINET	NET	METAL
C/C	CONTRACTOR SUPPLIED	MIN	MINIMUM
	CONTRACTOR INSTALLED	M.O.	MASONRY OPEN.
CJ	CONTROL JOINT	MTD	MOUNTED
CLG.	CELLING	O.C.	ON CENTER
CMU	CONC. MAS. UNIT	O.C.	OWNER SUPPLIED
CPT.	CARPET	CI	CENTER INSTALLED
C/O	CONTRACTOR SUPPLIED	O.D.	OUTSIDE DIM.
	OWNER INSTALLED	O/O	OWNER SUPPLIED/
COL.	COLUMN		INSTALLED
CONC	CONCRETE	PR.	PAIR
CONST.	CONSTRUCTION	PTD	PAINTED
CONT.	CONTINUOUS	R.	RADIUS
C.T.	CERAMIC TILE	RD.	ROOF DRAIN
DET.	DETAIL	REINF.	REINFORCING
DR	DOOR	REQ'D	REQUIRED
D.S.	DOWN SPOUT	R.O.	ROUGH OPENING
E.A.	EACH	STRUC.	STRUCTURAL
E.E.	EACH END	S.C.	SOLID CORE
E.J.	EXPANSION JOINT	SCHED.	SCHEDULE
E.O.	ELECTRICAL OUTLET	SHT	SHEET
EL.	ELEVATION	SIM.	SIMILAR
EQ.	EQUAL	S.S.	STAINLESS STEEL
EXIST.	EXISTING	STL.	STEEL
EXT.	EXTERIOR	STN & V	STAIN & VARNISH
FAB.	FABRICATED	T/	TOP OF
FDN.	FOUNDATION	T&B	TOP & BOTTOM
FEC	FIRE EXTINGUISHER	T&G	TONGUE & GROOVE
	CABINET	TLT.	TOILET
FEW	FIRE EXTINGUISHER	T.O.S.	TOP OF STEEL
	WALL MOUNTED	T.O.W.	TOP OF WALL
	FIRE EXTINGUISHER	T.S.	TUBE STEEL
FLR.	FLOOR	TYP.	TYPICAL
FTG.	FOOTING	U.N.O.	UNLESS NOTED
GA.	GAUGE		OTHERWISE
GALV.	GALVANIZED	VCT	VINYL COMPOSITION TILE
G.C.	GENERAL CONTRACTOR	V.I.F.	VERIFY IN FIELD
GL.	GLASS	W/	WITH
OSB	OSB BOARD	WD	WOOD
HCPD.	HANDICAPPED		
HLD	HOLD		
HM	HOLLOW METAL		
HP	HIGH POINT		
HR	HOUR		
HT.	HEIGHT		
I.D.	INSIDE DIM.		

MATERIALS

	EARTH		WOOD, ROUGH
	FILL		WOOD, FINISH
	GRAVEL		BATT INSUL.
	CONCRETE		RIGID INSUL.
	BRICK		PLYWOOD
	BLOCK		WIRE FABRIC
	LIMESTONE		CERAMIC TILE
			CORK BOARD

SYMBOLS

	PLAN TITLE
	DETAIL SECTION
	BUILDING SECTION
	EXTERIOR ELEVATION
	DETAIL TITLE
	ELEVATION REFERENCE
	DEMOLITION NOTE
	ACCESSORY TAG
	REVISION
	PARTITION TAG
	ROOM TAG
	DETAIL BUBBLE TAG
	COLUMN LINE
	EXISTING DOOR
	NEW DOOR

DRAWING INDEX

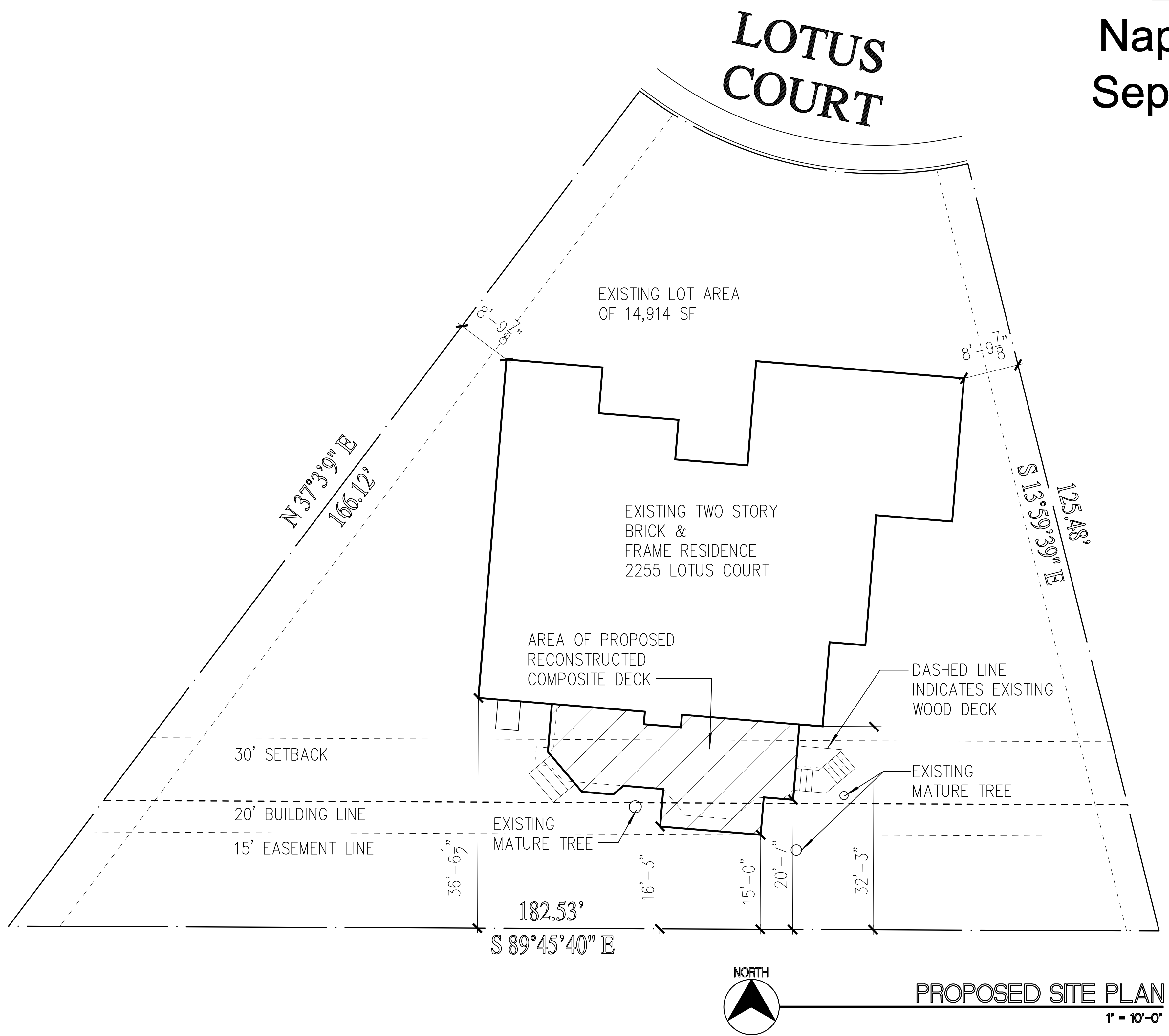
T-1 SITE PLAN & TITLE SHEET

GOVERNING CODES

- Current Naperville Zoning Ordinance
- 2018 International Residential Code w/ Naperville Amendments
- 2017 National Electric Code w/ Amendments
- Current Illinois Plumbing Code
- 2018 International Mechanical Code w/ Amendments
- 2018 International Fuel Gas Code w/ Amendments
- 2018 International Energy Code w/ Amendments

Outdoor Living Space for: The Pemberton Residence

2255 Lotus Court
Naperville, IL 60565
September 23, 2024



PROPOSED SITE PLAN
1" = 10'-0"

RENOVATION CREATIONS, LLC
11s516 McGrath Lane, Naperville, IL 60564

EXHIBIT B

PEMBERTON -- VARIANCE PLAN
SEPTEMBER 23, 2024
T-1