

MATERIAL SCHEDULE				
LEGEND	SYMBOL	COLOR	MANUFACTURER	TYPE
	BRICK (BR-1)	HARBOUR TOWN	HARBOUR TOWN BRICK BY HEBRON	3 5/8" x 2 1/4" x 5/8" - SMOOTH FACE & MONOTONE PALLETTE
	MORTAR	SOLIMON COLORS: GRAY	SMI OR APPROVED EQUAL	950 TYPE S / W WATER REPELLANT
	CONTROL JOINT SEALANT	COLOR: GRAY	DOM CORNING	DOM CORNING 750
	METAL COPING	COLOR: DARK BRONZE	PAC-CLAD PETERSON	
	FIRE CEMENT PANEL (N-1)	ESPRESSO	NICHHA ROUGH SAW	
	CONTROL JOINT SEALANT	COLOR: BRONZE	DOM CORNING	DOM CORNING 750
	METAL COPING	COLOR: DARK BRONZE	PAC-CLAD PETERSON	
	BRICK (BR-2)	CORDOVA LIMESTONE	ECHOLON	
	CONTROL JOINT SEALANT	COLOR: TBO	DOM CORNING	DOM CORNING 750
	METAL COPING	COLOR: TBO	PAC-CLAD PETERSON	
	METAL CANOPY	DARK BROWN	SUNSHADE BY MAPES ARCHITECTURAL CANOPIES OR APPROVED EQUAL	4" PROJECTION
	WALL PACK	SPAWN	GE	EXTERIOR LED WALL PACK # DR301-154750
	STOREFRONT	DARK BROWN ANODIZED		CLEAR ANODIZED STOREFRONT WITH 1" INSULATED GLASS
	METAL DOORS AND FRAME	SILVER SATETS	SHERWIN WILLIAMS	

CITY APPROVAL

CLIENT: **vequity** | *weil estate realty group*  
 400 N. State  
 Suite 400  
 Chicago, IL 60654  
 312-465-9577  
 Email: info@vequity.com  
 www.vequity.com

PROJECT TEAM:  
  
**LEKIS**  
 ARCHITECTS + DESIGNERS  
 LEKIS ASSOCIATES  
 223 W. JACKSON BLVD.  
 SUITE 1000  
 CHICAGO, IL 60606  
 312-418-0009 | www.LEKIS.com

THESE DOCUMENTS WERE PREPARED UNDER MY SUPERVISION AND TO THE BEST OF MY KNOWLEDGE AND BELIEF THEY COMPLY WITH THE APPLICABLE CODES AND REGULATIONS.  
 I AM A LICENSED ARCHITECT IN THE STATE OF ILLINOIS.  
 © COPYRIGHT 2018 LEKIS ASSOCIATES ALL RIGHTS RESERVED

NOTE:

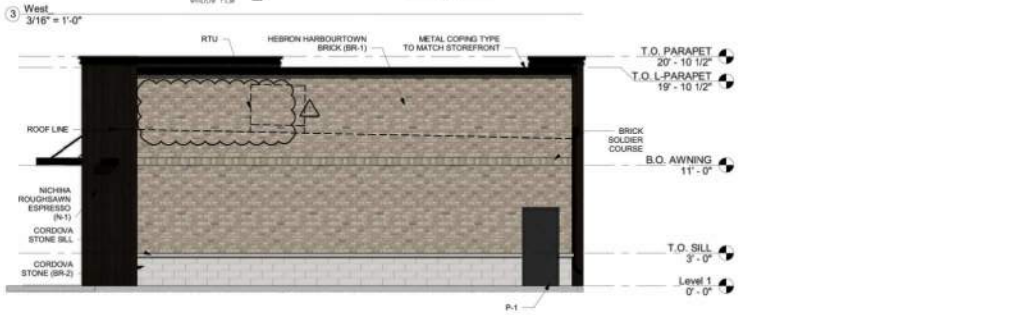
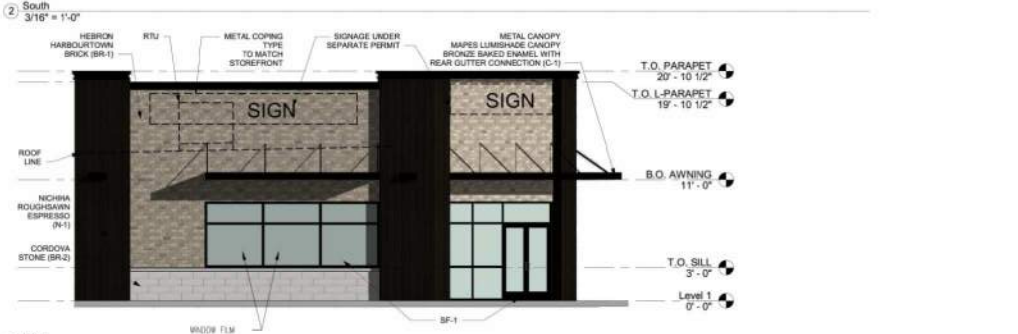
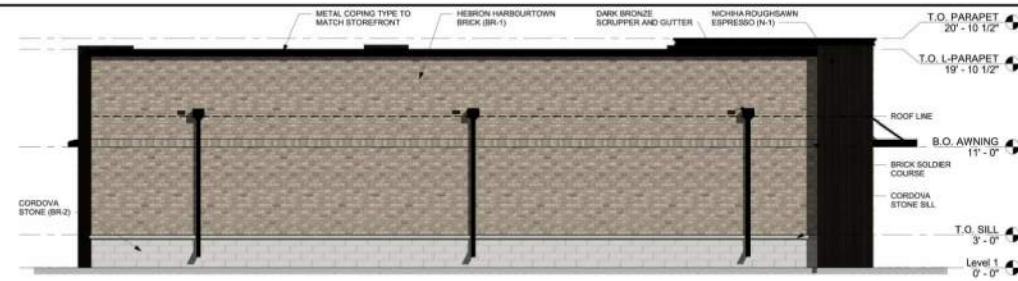
RETAIL BUILDING  
 PROJECT # 1814-24  
 891 W OGDEN AVE  
 NAPERVILLE, IL 60563

DATE:	ISSUED FOR:

05/22/19 ISSUED PER CITY COMMENTS  
 04/17/19 ISSUED PER CITY COMMENTS  
 03/19/18 ISSUED FOR CITY REVIEW

EXTERIOR ELEVATIONS AND SCHEDULE

A3.01



MATERIAL SCHEDULE					
LEGEND	DIMENSIONS	COLOR	MANUFACTURER	TYPE	
	BRICK (BR-1)	HARBOURTOWN	HARBOURTOWN BRICK BY HEBRON	3 5/8" x 2 1/4" x 7 5/8" - SMOOTH FACE & MONOCOLOR PALLETTE	
	MORTAR	SOLOMON COLORS GREY	SMI OR APPROVED EQUAL	600 TYPE S / W WATER REPELENT	
	CONTROL JOINT SEALANT	COLOR: GRAY	ODM CORNING	ODM CORNING 790	
	METAL COPING	COLOR: DARK BRONZE	PAC-CLAD PETERSEN		
	FIBER CEMENT PANEL (N-5)	ESPRESSO	NICHNA ROUGH SAWN		
	MORTAR	COLOR: BRONZE	ODM CORNING	ODM CORNING 790	
	METAL COPING	COLOR: DARK BRONZE	PAC-CLAD PETERSEN		
	BRICK (BR-2)	CORDOVA Limestone	ECHOLON		
	CONTROL JOINT SEALANT	COLOR: TBO	ODM CORNING	ODM CORNING 790	
	METAL COPING	COLOR: TBO	PAC-CLAD PETERSEN		
	METAL CANOPY	DARK BROWN	SUPERGRADE BY MAPES ARCHITECTURAL CANOPIES OR APPROVED EQUAL	4" PROJECTION	
	WALL PACK	SPICAN	GE	EXTERIOR LED WALL PACK # PWS201_124750	
	STOREFRONT	DARK BROWN ANODIZED		CLEAR ANODIZED STOREFRONT WITH 1" INSULATED GLASS	
	METAL DOORS AND FRAME	SEALSIGN 347675	SHERWIN WILLIAMS		

CITY APPROVAL

CLIENT: **vequity** | *we define redelfresh.*

Vequity  
400 W. State  
Suite 400  
Chicago, IL 60654  
312-986-9897  
Email: info@vequity.com  
www.vequity.com

PROJECT TEAM:

**LEKIS**  
2311 N. LAKE ST. #200  
LEKIS ASSOCIATES  
223 W. JACKSON BLVD.  
SUITE 1000  
CHICAGO, IL 60606

312-418-0009 | [www.LEKIS.com](http://www.LEKIS.com)  
THESE DOCUMENTS WERE PREPARED UNDER THE SUPERVISION AND TO THE BEST OF HIS KNOWLEDGE, SKILL AND CARE, IN ACCORDANCE WITH THE PROFESSIONAL SEAL AND LICENSE OF ARCHITECTURE IN THE STATE OF ILLINOIS  
DATE OF DESIGN: 02.28.23  
DATE OF THESE DOCUMENTS: 03.16.23

NOTE:

RETAIL BUILDING  
PROJECT # 1814-24  
891 W OGDEN AVE  
NAPERVILLE, IL 60563

DATE: ISSUED FOR:

DATE	ISSUED FOR

05/22/19 ISSUED PER CITY COMMENTS  
04/17/19 ISSUED PER CITY COMMENTS  
03/19/19 ISSUED FOR CITY REVIEW

EXTERIOR COLOR ELEVATIONS AND SCHEDULE

A3.02



1 3D VIEW  
SCALE:



2 3D VIEW  
SCALE:

CITY APPROVAL

CLIENT:  
**vequity** | weil estate realty trust  
vequity  
405 N. State  
Suite 400  
Chicago, IL 60654  
312-865-9657  
Email: info@vequity.com  
www.vequity.com

PROJECT TEAM:  
**ILEKIS**  
ARCHITECTS + INTERIORS  
ILEKIS ASSOCIATES  
223 W. JACKSON BLVD.  
SUITE 1000  
CHICAGO, IL 60606  
312-418-0009 www.ILEKIS.COM  
THESE DOCUMENTS WERE PREPARED UNDER MY SUPERVISION TO THE BEST OF MY KNOWLEDGE AND BELIEF IN ACCORDANCE WITH THE APPLICABLE CODES AND REGULATORY REQUIREMENTS.  
© COPYRIGHT 2018 ILEKIS ASSOCIATES. ALL RIGHTS RESERVED.

NOTE:

RETAIL BUILDING  
PROJECT # 1814-24  
891 W OGDEN AVE  
NAPERVILLE, IL 60563

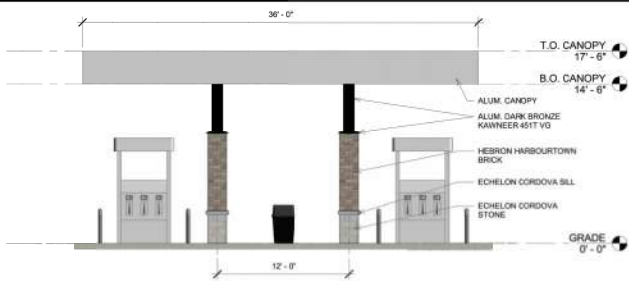
THESE DOCUMENTS WERE PREPARED UNDER MY SUPERVISION TO THE BEST OF MY KNOWLEDGE AND BELIEF IN ACCORDANCE WITH THE APPLICABLE CODES AND REGULATORY REQUIREMENTS.  
COPYRIGHT 2018 ILEKIS ASSOCIATES. ALL RIGHTS RESERVED.

DATE:	ISSUED FOR:

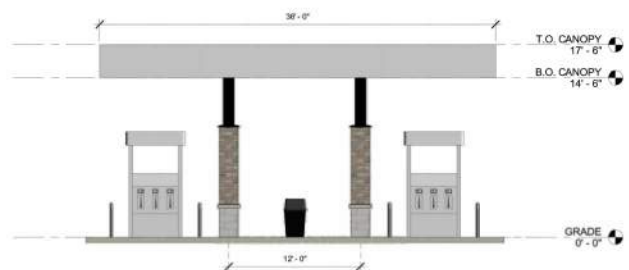
05/22/18	ISSUED PER CITY COMMENTS
04/17/18	ISSUED PER CITY COMMENTS
03/10/18	ISSUED FOR CITY REVIEW

3D VIEWS

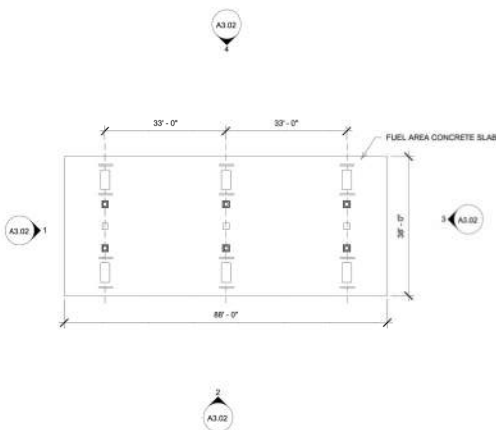
A3.03



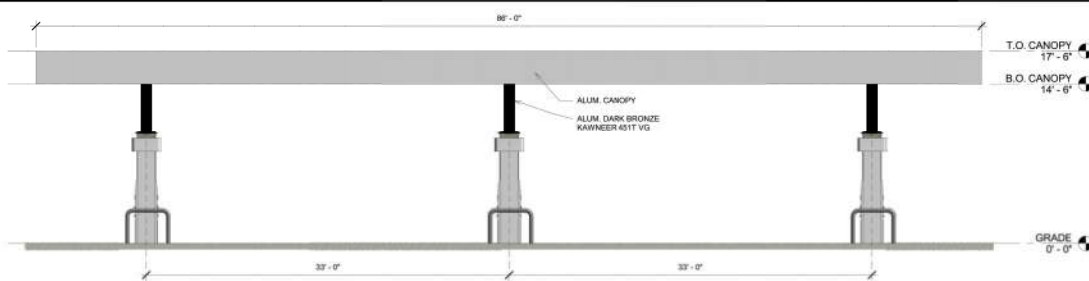
1 CANOPY - EAST ELEVATION  
3/16" = 1'-0"



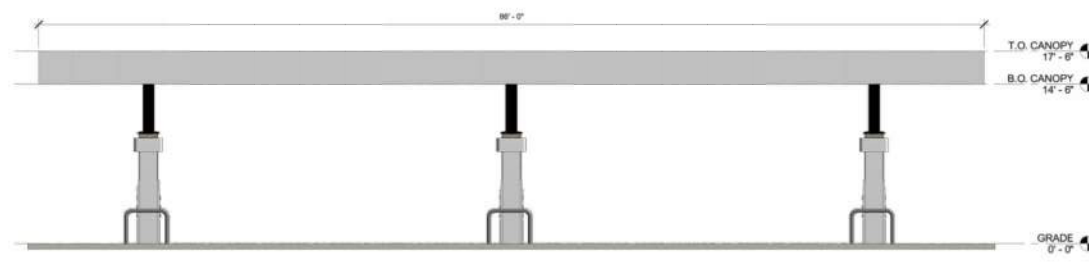
3 CANOPY - WEST ELEVATION  
3/16" = 1'-0"



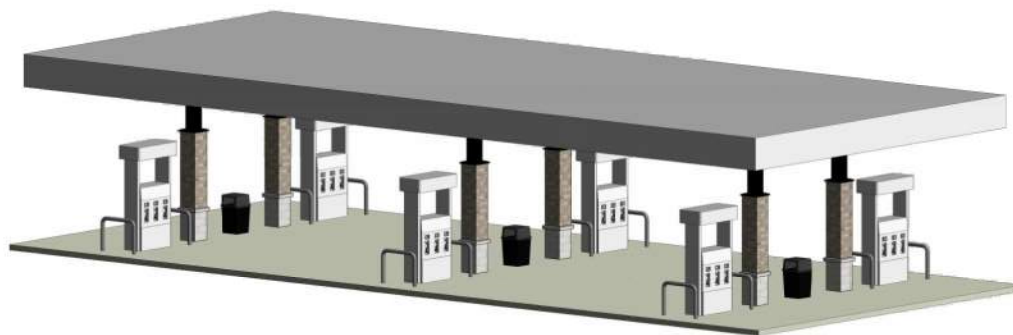
5 CANOPY FLOOR PLAN  
1/16" = 1'-0"



2 CANOPY - NORTH ELEVATION  
3/16" = 1'-0"



4 CANOPY - SOUTH ELEVATION  
3/16" = 1'-0"



NOTE: CANOPY UNDER SEPARATE PERMIT

6 CANOPY PERSPECTIVE

CITY APPROVAL

CLIENT:  
**vequity** | *real estate. redefined.*  
Vequity  
400 N. State  
Suite 400  
Chicago, IL 60654  
312-465-9957  
Email: info@vequity.com  
www.vequity.com

PROJECT TEAM:  
**LEKIS**  
CONSULTANTS + DESIGNERS  
LEKIS ASSOCIATES  
233 W. JACKSON BLVD.  
SUITE 1000  
CHICAGO, IL 60606  
312-418-0009 | www.LEKIS.com  
THESE DOCUMENTS WERE PREPARED UNDER MY  
SUPERVISION AND TO THE BEST OF MY KNOWLEDGE,  
I AM A LEKIS ASSOCIATE. ANY AND ALL DESIGN  
CONTRACTS SHALL BE IN ACCORDANCE WITH THE  
CITY OF CHICAGO AND ILLINOIS REGULATIONS.

NOTE:

RETAIL BUILDING  
PROJECT # 1914-24  
891 W OGDEN AVE  
NAPERVILLE, IL 60563

DATE:	ISSUED FOR:

05/22/19	ISSUED PER CITY COMMENTS
06/17/19	ISSUED PER CITY COMMENTS
03/02/18	ISSUED FOR CITY REVIEW

FUEL CANOPY ELEVATIONS

A3.04

CITY APPROVAL

**CLIENT:**  
**veequity** | *real estate. redefined.*  
 Vequity  
 409 N. State  
 Suite 400  
 Chicago, IL 60654  
 312.685-2987  
 Email: info@veequity.com  
 www.veequity.com

**PROJECT TEAM:**  
**LEKIS**  
CONSULTING ENGINEERS  
 LEKIS ASSOCIATES  
 223 W. JACKSON BLVD.  
 SUITE 1000  
 CHICAGO, IL 60606  
 312.419-0009 | www.LEKIS.com  
 THESE DOCUMENTS WERE PREPARED UNDER A PROFESSIONAL SERVICE CONTRACT BETWEEN THE ENGINEER AND CLIENT. THIS CONTRACT IS THE ONLY AGREEMENT GOVERNING THE ENGINEERING, ARCHITECTURAL, AND OTHER SERVICES PROVIDED HEREIN.  
 © COPYRIGHT 2016 BY LEKIS ASSOCIATES, INC. ALL RIGHTS RESERVED.

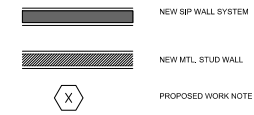
**GENERAL NOTES**

- A. FIRE SAFE ALL PENETRATIONS THRU PARTITIONS.
- B. PROVIDE ACCESSIBLE THRESHOLD AT EACH EXTERIOR DOOR-SEE DOOR SCHEDULE
- C. PRIME INTERIOR WALLS, COLUMNS TRIM AND DOOR FRAMES
- D. SEE STRUCTURAL FOR CONTROL AND ISOLATION JOINTS AT CONCRETE SLAB AND AROUND COLLARS
- E. CONTACT OWNER REGARDING HOW THEY WANT TO REKEY THE LOCK FOR THE MAIN ENTRY VS THE SERVICE DOOR, LANDLORD ROOM TO HAVE ELECTRONIC KEY PAD KEY LOCK.
- F. ARABIC NUMERALS AT LEAST FOUR INCHES HIGH WITH A MINIMUM STROKE WIDTH OF 0.5 INCHES SHOWING THE ADDRESS OF THE BUILDING SHALL CONTRAST WITH THE BACKGROUND, SHALL BE CONSTRUCTED OF DURABLE MATERIALS, BE PERMANENTLY INSTALLED AND BE READILY VISIBLE. SCRIPT OR WRITTEN NUMBERS ARE NOT PERMITTED. ADDITIONAL NUMBERS SHALL ALSO BE PLACED ON THE SIDE OF THE BUILDING'S STREET ADDRESS.
- G. AT SERVICE DOORS USED AS EXIT/ACCESS FOR FIRE FIGHTING, ARABIC NUMERALS A MINIMUM OF FOUR INCHES IN HEIGHT WITH A MINIMUM STROKE OF 0.5 INCH SHALL BE APPLIED TO THE ADDITIONAL DOOR TO INDICATE THE ADDRESS. THE ADDRESS SHALL BE VISIBLE FROM THE PARKING LOT OR FIRE APPARATUS ACCESS.
- H. THIS IS A SPRINKLERED BUILDING PER REQUIREMENT OF VILLAGES OF ARLINGTON HEIGHTS.
- I. SEE FP DRAWINGS FOR LAYOUT.
- J. SEE STRUCTURAL FOR CONTROL JOINTS AND EXPANSION JOINTS.
- K. ALL JOINT SYSTEMS IN RATED WALL ASSEMBLIES SHALL COMPLY WITH UL 2079.
- L. ANY PENETRATIONS THROUGH RATED ASSEMBLIES SHALL COMPLY WITH UL 2033.
- M. PROVIDE A KNOX BOX TO ENABLE THE FIRE DISTRICT TO HAVE ACCESS TO THE BUILDING AND THE BUILDING'S FIRE PROTECTION FEATURES.
- N. G.C. TO PROVIDE PORTABLE FIRE EXTINGUISHERS WITHIN THE BUILDING. THE TYPE, SIZE AND SPACING MUST MATCH THE SPECIFIC HAZARD THEY ARE TO PROTECT. CONTACT THE FIRE DISTRICT FOR APPROVAL OF THE TYPES AND LOCATIONS OF PORTABLE FIRE EXTINGUISHERS TO BE USED PRIOR TO FINAL OCCUPANCY.

**KEYED NOTES**

- 1. METAL LADDER WITH ROOF HATCH.
- 2. ELECTRICAL PANEL.

**WALL LEGEND**



NOTE:

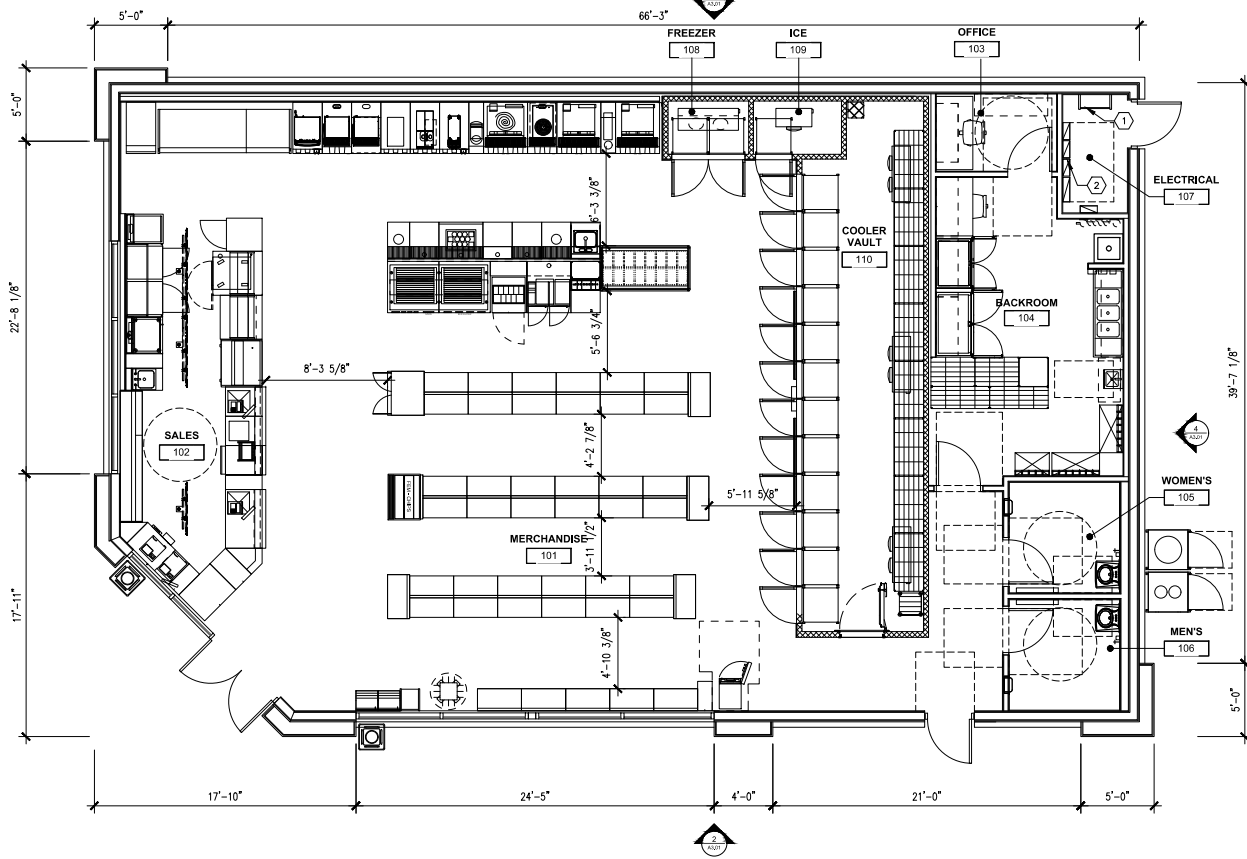
RETAIL BUILDING  
 PROJECT # 1814-24  
 891 W OGDEN AVE  
 NAPERVILLE, IL 60563

DATE:	ISSUED FOR:

05/22/19	ISSUED PER CITY COMMENTS
04/17/19	ISSUED PER CITY COMMENTS
03/10/19	ISSUED FOR CITY REVIEW

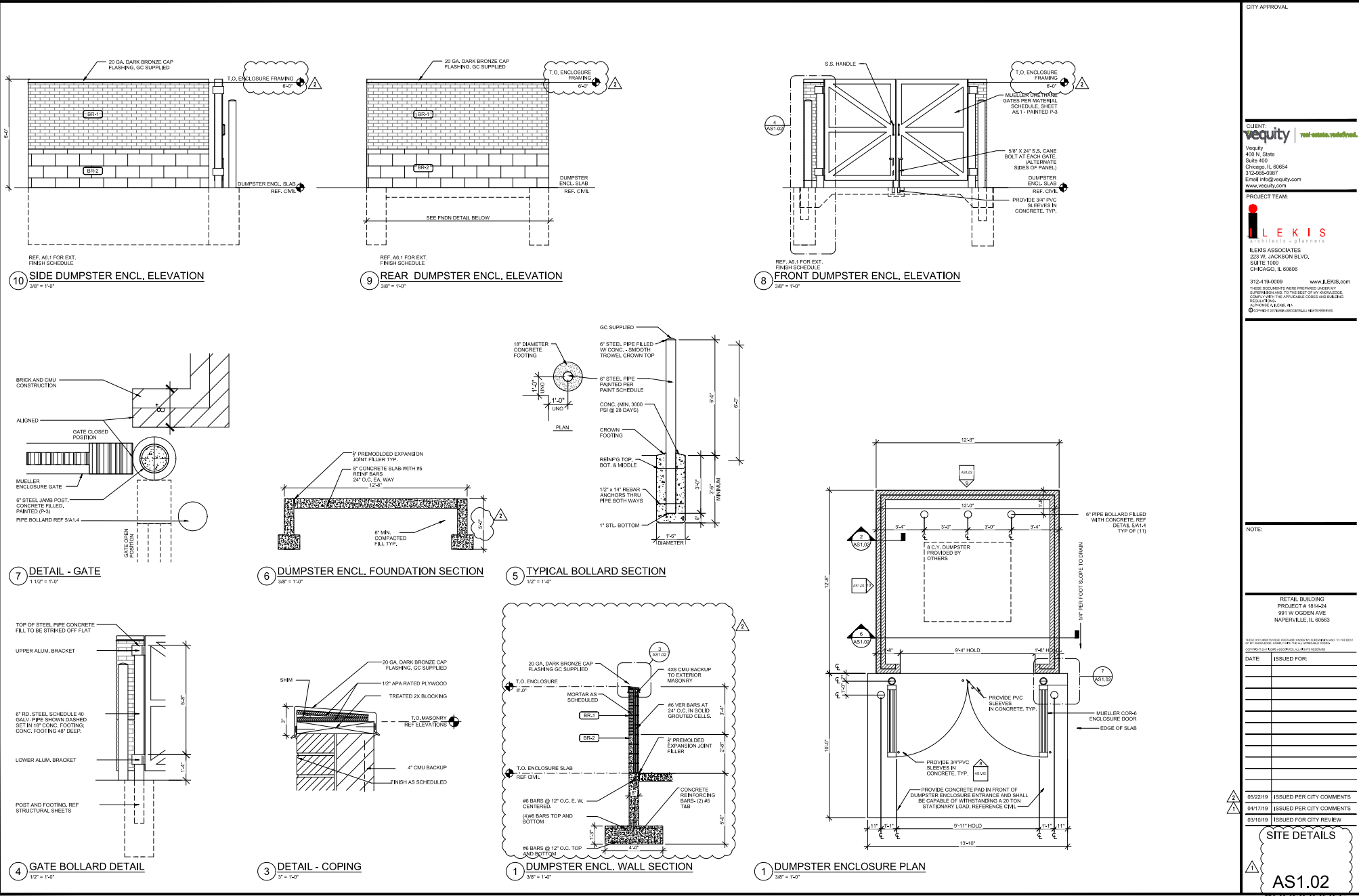
**FLOOR PLAN**

A1.01



**1 FLOOR PLAN**  
 SCALE: 1/4"=1'-0"  
 NORTH

EXHIBIT D



CITY APPROVAL

CLIENT:  
**vequity** real estate, realty, inc.  
 400 N. State  
 Suite 400  
 Chicago, IL 60654  
 312-685-0987  
 Email: info@vequity.com  
 www.vequity.com

PROJECT TEAM:  
**ILEKIS**  
 CONSULTING ENGINEERS  
 ILEKIS ASSOCIATES  
 283 W. JACKSON BLVD.  
 SUITE 1000  
 CHICAGO, IL 60606  
 312-219-0099 www.ilekis.com  
 THESE DOCUMENTS HAVE BEEN PREPARED AND CHECKED BY THE REGISTERED PROFESSIONAL ENGINEER, ARCHITECT, OR PROFESSIONAL DESIGNER INDICATED ON THESE DOCUMENTS. NO OTHER PROFESSIONAL DESIGNER HAS BEEN CONSULTED FOR THESE DOCUMENTS. THE DESIGNER'S LIABILITY IS LIMITED TO THE PROFESSIONAL SERVICES PROVIDED BY THE DESIGNER.

NOTE:

RETAIL BUILDING  
 PROJECT # 1814-24  
 891 W OGDEN AVE  
 MAPLEVILLE, IL 62553

THESE DOCUMENTS HAVE BEEN PREPARED AND CHECKED BY THE REGISTERED PROFESSIONAL ENGINEER, ARCHITECT, OR PROFESSIONAL DESIGNER INDICATED ON THESE DOCUMENTS. NO OTHER PROFESSIONAL DESIGNER HAS BEEN CONSULTED FOR THESE DOCUMENTS.

DATE: ISSUED FOR:

05/22/19	ISSUED PER CITY COMMENTS
04/17/19	ISSUED PER CITY COMMENTS
03/10/19	ISSUED FOR CITY REVIEW

**SITE DETAILS**

AS1.02

EXHIBIT D