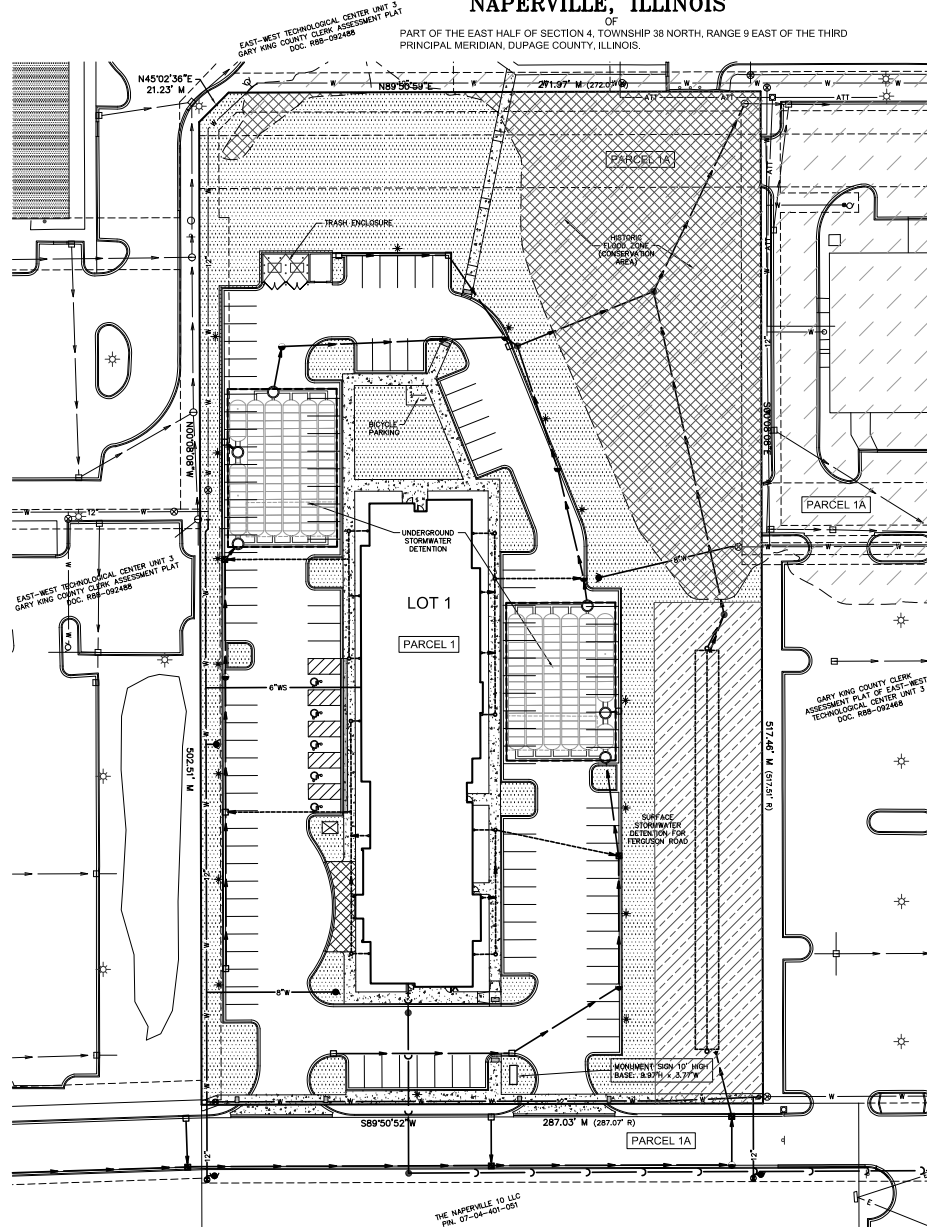


OPEN SPACE EXHIBIT

TRU BY HILTON SUBDIVISION

NAPERVILLE, ILLINOIS

OF
PART OF THE EAST HALF OF SECTION 4, TOWNSHIP 38 NORTH, RANGE 9 EAST OF THE THIRD
PRINCIPAL MERIDIAN, DUPAGE COUNTY, ILLINOIS.



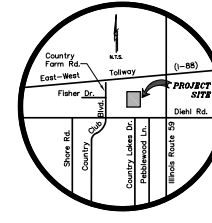
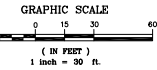
PN NO'S: 07-04-01-046 (LOT 16)
07-04-01-047 (LOT 17)

LEGAL DESCRIPTION FOR LOT 1

PARCEL 1, LOTS 16 AND 17 IN THE EAST-WEST TECHNOLOGICAL CENTER UNIT 2, BEING A SUBDIVISION OF PART OF THE EAST HALF OF SECTION 4, TOWNSHIP 38 NORTH, RANGE 9 EAST OF THE THIRD PRINCIPAL MERIDIAN, ACCORDING TO THE PLAT THEREOF RECORDED MARCH 13, 1989 AS DOCUMENT R88-027345.

PARCEL 1A, EASEMENTS FOR ACCESS AND INGRESS AND EGRESS FOR BENEFIT OF PARCEL 1 SET FORTH ON PLAT OF SUBDIVISION DOCUMENT R88-027345 AND AS SET FORTH IN DOCUMENTS R88-148870 AND R88-033561.

SCALE: 1" = 30'
BASIS OF BEARING - EAST-WEST
TECHNOLOGICAL CENTER UNIT 2
SUBDIVISION PLAT



LOCATION MAP
NOT TO SCALE

ABBREVIATION TABLE

N = NORTH
S = SOUTH
E = EAST
W = WEST
S.F. = SQUARE FEET
DOC. = DOCUMENT

LEGEND

- LOT BOUNDARY LINE
- - - EASEMENT LINE
- - - HISTORIC FLOOD ZONE
- SANITARY SEWER WITH MANHOLE
- W-WATER MAIN & HYDRANT
- S-STORM SEWER
- V-VALVE IN VAULT
- INLET, TYPE A
- MANHOLE, TYPE A WITH CLOSED LID
- MANHOLE, TYPE A WITH OPEN LID
- HANDICAP PARKING SPACE
- CURB & GUTTER
- SIDEWALK
- ▨ CONSERVATION AREA
- ▨ INTERNAL LANDSCAPE AREA
- ▨ DETENTION AREA

OPEN SPACE

	OUTDOOR COMMON AREA	OTHER OPEN SPACE
CONSERVATION AREA	INTERIOR LANDSCAPE AREA	TOTAL COMMON AREA BASED ON PARCEL AREA
25,930 S.F.	36,321 S.F.	62,251 S.F.
		% COMMON AREA BASED ON PARCEL AREA
		41.2%
		STORMWATER DETENTION AREA
		14,092 S.F.

OWNER/DEVELOPER:

ZI CHASE INVESTMENT GROUP, LLC
39W665 GOLDENROD DRIVE
ST. CHARLES, IL 60175

CITY OF NAPERVILLE PROJECT NO.: 19-10000075

INTECH CONSULTANTS, INC.

1989 UNIVERSITY LANE, SUITE D
LISLE, ILLINOIS 60532
PHONE: 630-954-9999

ENGINEERS - SURVEYORS

ILLINOIS REGISTRATION No. 194-001940

PREPARED: 7-30-19

SHEET No. 1 of 1

JOB No.: 2005-007TRU

THE NAPERVILLE 10 LLC
PN: 07-04-01-051