

NOTES CORRESPONDING TO SCHEDULE B

AS PER COMMITMENT NO. 1700002238, DATED JULY 17, 2017.

- 4. GRANT OF AN EASEMENT MADE BY MRS. MAE CARTER TO THE ILLINOIS BELL TELEPHONE COMPANY...
5. GRANT OF AN EASEMENT MADE BY MRS. MAE CARTER TO THE ILLINOIS BELL TELEPHONE COMPANY...
6. TERMS, PROVISIONS AND CONDITIONS CONTAINED IN MEMORANDUM OF AGREEMENT FOR GRANT OF MUTUAL UTILITY EASEMENTS...
7. GRANT OF UTILITY EASEMENT AND EASEMENT AGREEMENT DATED DECEMBER 29, 1977 AND RECORDED JANUARY 31, 1978 AS DOCUMENT 878-0891...
8. MEMORANDUM OF ROADWAY EASEMENT PROVISIONS OF OPTION TO BUY REAL ESTATE, DATED DECEMBER 29, 1977 AS DOCUMENT 878-0892...
9. EASEMENTS WITH COVENANTS AND RESTRICTIONS AFFECTING LAND RECORDED MAY 16, 1989 AS DOCUMENT R89-037392...
10. TERMS, PROVISIONS AND CONDITIONS CONTAINED IN ANNEXATION AGREEMENT AND ORDINANCE ANNEXING CERTAIN TERRITORY...
11. EASEMENT AGREEMENT RECORDED NOVEMBER 14, 1990 AS DOCUMENT R90-150704...
12. ACCESS AND PARKING EASEMENT AGREEMENT DATED SEPTEMBER 8, 1994 AND RECORDED SEPTEMBER 22, 1994 AS DOCUMENT R94-19265...
13. EASEMENT IN FAVOR OF CITY OF NAPERVILLE, THE ILLINOIS BELL TELEPHONE COMPANY, NORTHERN ILLINOIS GAS COMPANY...
14. TERMS, PROVISIONS AND CONDITIONS CONTAINED IN STATEMENT OF INTENT AND AGREEMENT RECORDED JANUARY 29, 1990 AS DOCUMENT R90-012325...
15. INSTALLMENT AGREEMENTS RECORDED AS DOCUMENTS R90-001252, R90-036880, R90-090369 AND R91-086471...
16. LEASE MADE BY FOX RIVER COMMONS PARTNERSHIP, AN ILLINOIS GENERAL PARTNERSHIP, TO BEB BATH & BEYOND, INC...
17. LEASE MADE BY AND BETWEEN OFFICE DEPOT, INC., A DELAWARE CORPORATION (TENANT), AMERICAN NATIONAL BANK & TRUST COMPANY OF CHICAGO...
18. GRANT OF EASEMENTS DATED APRIL 14, 1997 AND RECORDED AUGUST 4, 1997 AS DOCUMENT 997-112728...
19. THE FOLLOWING MATTERS DISCLOSED ON PLAT OF FOX RIVER COMMONS RESUBDIVISION RECORDED DECEMBER 16, 2008 AS DOCUMENT NUMBER R2008-177452:
A) EASEMENTS FOR PUBLIC UTILITIES AND DRAINAGE AND THE PROVISIONS THEREOF;
B) EASEMENT AND COVENANTS FOR STORM WATER MANAGEMENT;
(C) AFFECTS SUBJECT PROPERTY, AS SHOWN HEREON.

EASEMENT DESCRIPTION

10 FOOT STORM SEWER LINE EASEMENT

BEGIN WITHIN LOTS 1 & 2 OF FOX RIVER COMMONS RESUBDIVISION RECORDED DECEMBER 16, 2008 AS DOCUMENT NUMBER R2008-177452. A RESUBDIVISION OF LOTS 2 AND 3 OF FOX RIVER COMMONS...

STORM SEWER LINE #1 COMMENCING AT THE NORTHWEST MOST CORNER OF SAID LOT 2; THENCE SOUTH 00 DEGREES 18 MINUTES 42 SECONDS EAST A DISTANCE OF 137.77 FEET TO THE POINT OF BEGINNING...

BEGINNING AT AFOREMENTIONED POINT "A"; THENCE SOUTH 89 DEGREES 33 MINUTES 18 SECONDS WEST 18.17 FEET; THENCE SOUTH 89 DEGREES 33 MINUTES 50 SECONDS WEST 83.96 FEET...

BEGINNING AT AFOREMENTIONED POINT "B"; THENCE SOUTH 89 DEGREES 33 MINUTES 50 SECONDS WEST 83.96 FEET; THENCE SOUTH 89 DEGREES 33 MINUTES 23 SECONDS EAST 51.45 FEET...

BEGINNING AT AFOREMENTIONED POINT "C"; THENCE SOUTH 89 DEGREES 33 MINUTES 50 SECONDS WEST 83.96 FEET; THENCE SOUTH 89 DEGREES 33 MINUTES 23 SECONDS EAST 51.45 FEET...

BEGINNING AT AFOREMENTIONED POINT "D"; THENCE SOUTH 89 DEGREES 33 MINUTES 50 SECONDS WEST 83.96 FEET; THENCE SOUTH 89 DEGREES 33 MINUTES 23 SECONDS EAST 51.45 FEET...

BEGINNING AT AFOREMENTIONED POINT "E"; THENCE SOUTH 89 DEGREES 33 MINUTES 50 SECONDS WEST 83.96 FEET; THENCE SOUTH 89 DEGREES 33 MINUTES 23 SECONDS EAST 51.45 FEET...

STORM SEWER LINE #2 COMMENCING AT THE NORTHWEST MOST CORNER OF SAID LOT 2; THENCE NORTH 89 DEGREES 44 MINUTES 18 SECONDS EAST 398.24 FEET...

BEGINNING AT AFOREMENTIONED POINT "F"; THENCE SOUTH 89 DEGREES 33 MINUTES 50 SECONDS WEST 83.96 FEET; THENCE SOUTH 89 DEGREES 33 MINUTES 23 SECONDS EAST 51.45 FEET...

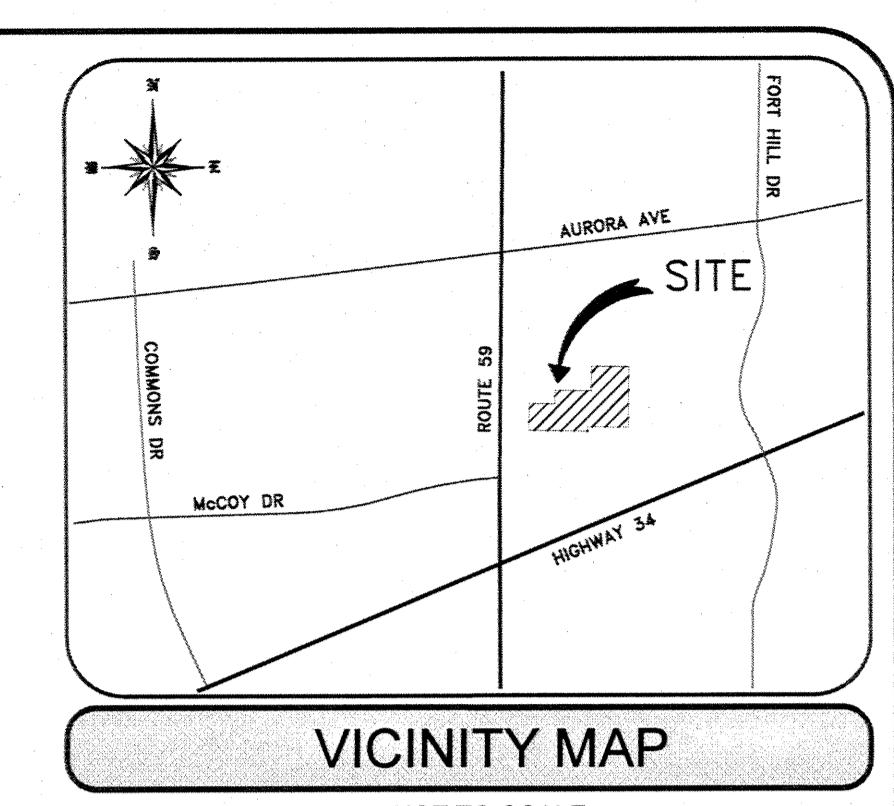
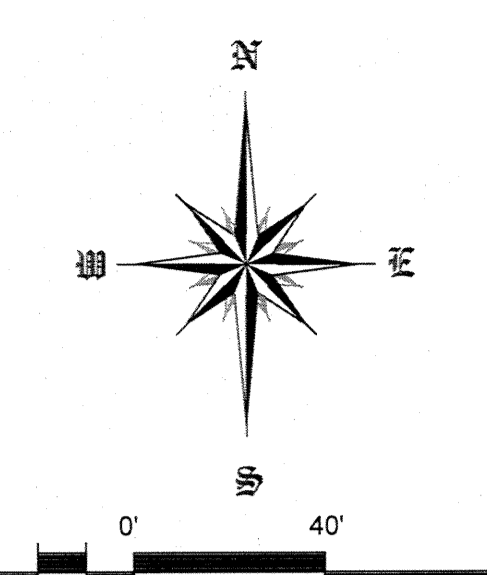
DETONATION POND EASEMENT LYING IN A PORTION OF LOT 2 OF FOX RIVER COMMONS RESUBDIVISION RECORDED DECEMBER 16, 2008 AS DOCUMENT NUMBER R2008-177452...

CONTAINING 59,423.5 SQUARE FEET.

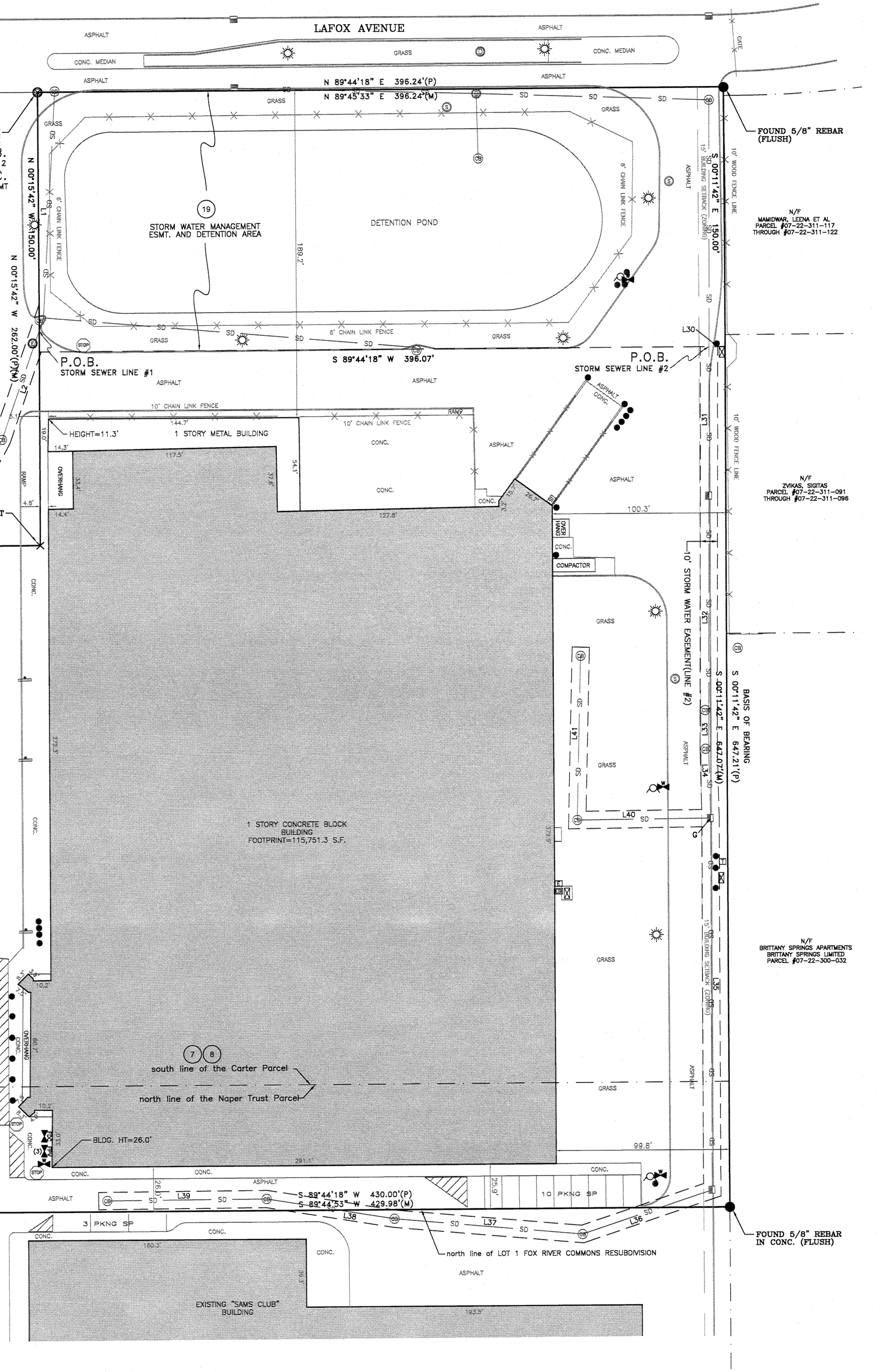
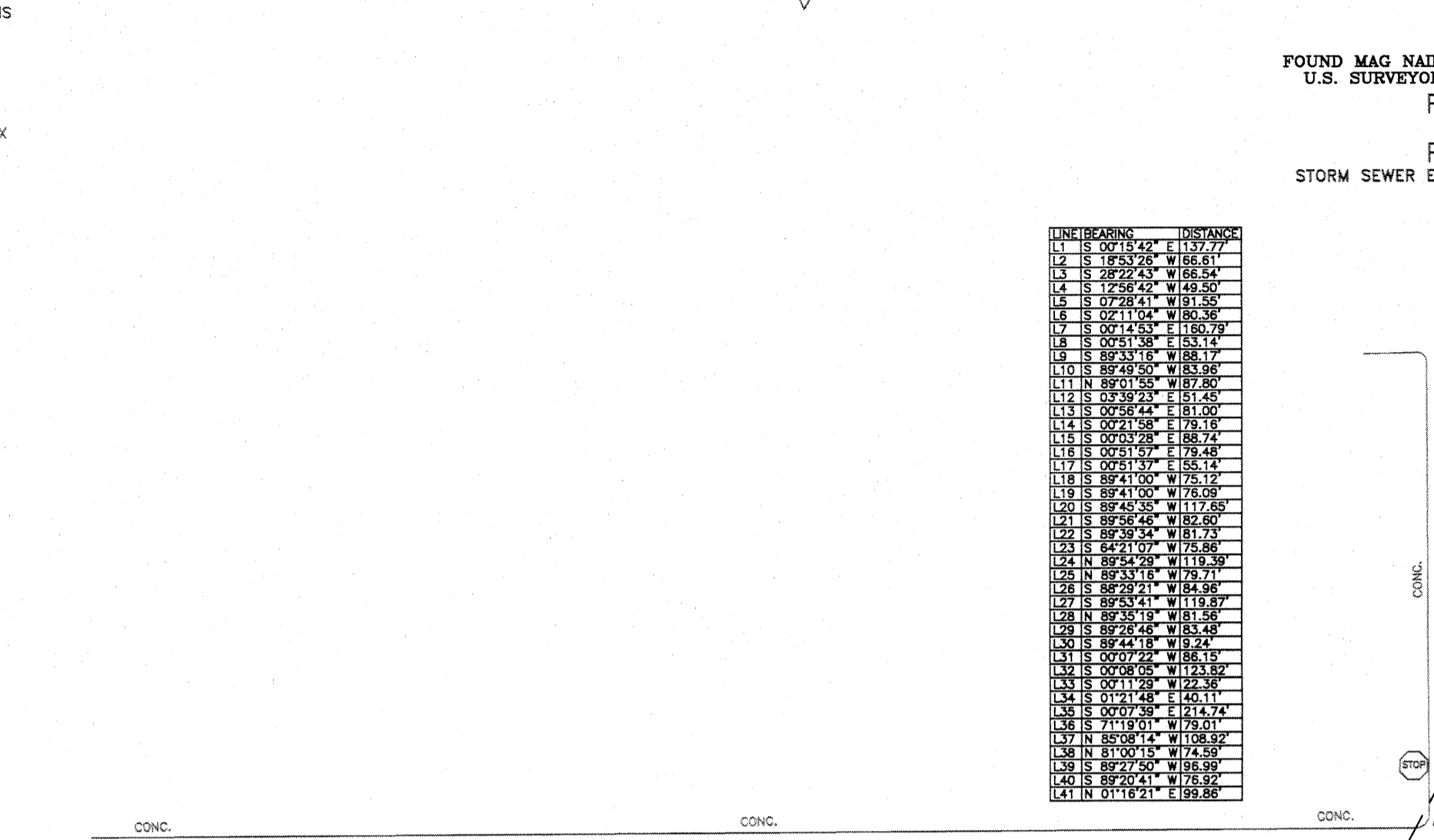
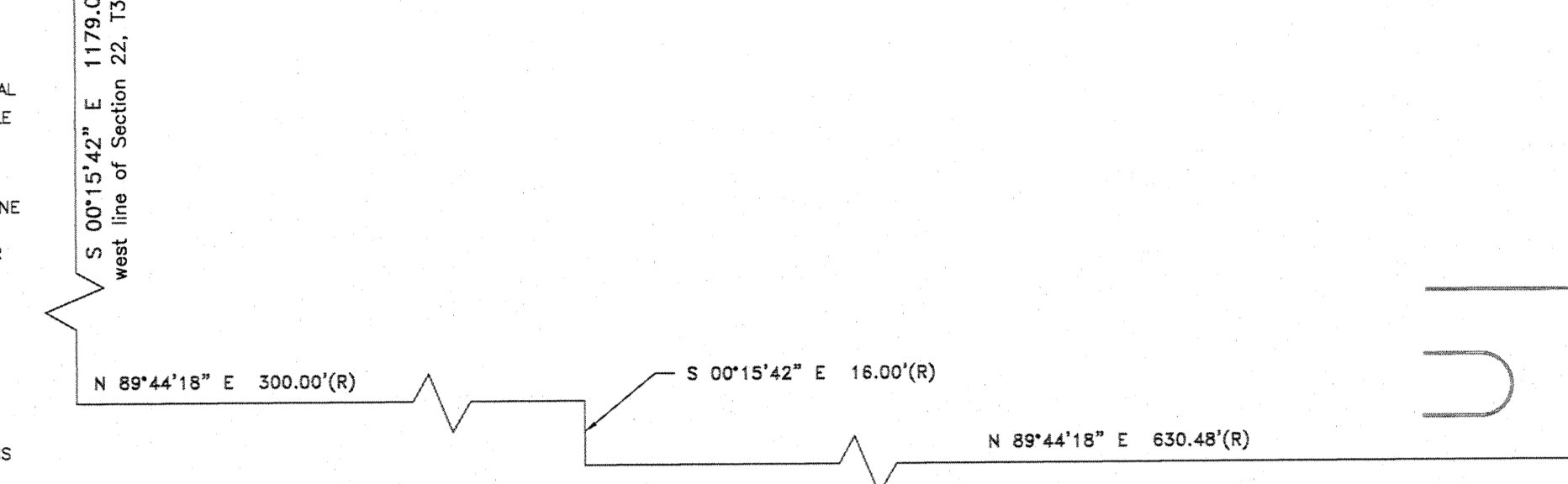
STANDARD LEGEND

- MONUMENT FOUND
P.K. NAIL FOUND
MAG NAIL FOUND
MAG NAIL SET
FOUND X MARK
SET X MARK
R.R. SPIKE FOUND
R.R. SPIKE SET
BENCHMARK
CONC. R/W MARKER
ELECTRICAL VAULT
WATER LINE
WATER MANHOLE
WATER VALVE
WATER METER
HYDRANT
BACK FLOW PREVENTOR
FIRE SUPPLY LINE
FIRE PROTECTION VALVE
HOSE BIBB
CONTROL VALVE
IRRIGATION CONTROL VALVE
CONFER
SQUARE METAL LID
FUEL TANK LID
FLAG POLE
GAS METER
GAS VALVE
GAS LINE
GAS MARKER
PROFESSOR MANHOLE
GAS MANHOLE
UNKNOWN VALVE
PROPANE TANK
MAL BOX
BOLLARD
BORE HOLE
MONITORING WELL
POWERPOLE
GUY WIRE
LIGHT POLE
GROUND LIGHT
STREET LIGHT POLE
ELEC. TRANSFORMER
AIR CONDITIONER
BURIED ELECTRIC
OVERHEAD ELECTRIC
ELECTRIC MANHOLE
ELECTRIC METER
ELECTRIC BOX
GENERATOR
ELECTRICAL VAULT
SAN. SEWER LINE
SEWER MANHOLE
SEWER TRAP
FORSEDE MARK
CLEAN OUT
STORM DRAIN MANHOLE
STORM INLET
CATCH BASIN
CURB INLET
PAY PHONE
TELEPHONE BOX
TELEPHONE PEDESTAL
TELEPHONE MANHOLE
TELEPHONE POLE
TELEPHONE LINE
OVERHEAD TELEPHONE
CABLE MARKER
CABLE TELEVISION CONNECTION
FIBER OPTIC CABLE
OVERHEAD CABLE
CABLE BOX
UNDERGROUND TELEPHONE MARKER
CABLE TELEVISION CONNECTION
UNDERGROUND CABLE MARKER
UNDERGROUND TELEPHONE MARKER
TRAFFIC SIGNAL
TRAFFIC SIGNAL BOX
TRAFFIC VAULT
STOP SIGN
SIGN
FENCE

ALT/NSPS LAND TITLE SURVEY



P.O.C. centerline of IL HWY 65



LEGAL DESCRIPTION (TITLE)

LOT 2 OF FOX RIVER COMMONS RESUBDIVISION RECORDED DECEMBER 16, 2008 AS DOCUMENT NUMBER R2008-177452. A RESUBDIVISION OF LOTS 2 AND 3 OF FOX RIVER COMMONS...

ALT/NSPS LAND TITLE SURVEY

SURVEYOR'S CERTIFICATION TO: WAL-MART REAL ESTATE TRUST; SAM'S REAL ESTATE TRUST; STEWART TITLE GUARANTY CORPORATION; VINOZ CHANAMOLU AND ANIL SUNKARA; PROJECT NAPERVILLE, LLC...

U.S. SURVEYOR logo and contact information: 4929 Riverwind Pointe Drive Evansville, Indiana 47715. America's Land Surveyor. 1-800-TO SURV

Walmart logo and project location information: PROJECT LOCATION: [blank] COUNTY, STATE OF ILLINOIS. PROJECT ADDRESS: 776 S. ROUTE 59, NAPERVILLE, IL 60540. PROJECT TYPE: ALTA/NSPS LAND TITLE SURVEY.

Professional seal for Rodney K. Young, Surveyor, License No. 184-003107, State of Illinois. SHEET 1 OF 1.

FLOOD DATA: This property is in Zone X of the Flood Insurance Rate Map, Community Panel No. 17043C0705H. It is NOT in a Special Flood Hazard Area.

IT IS THE CONTRACTORS RESPONSIBILITY TO LOCATE ALL UTILITIES, WHETHER SHOWN ON THIS SURVEY OR NOT PRIOR TO COMMENCEMENT OF WORK. THIS SURVEY HAS BEEN PREPARED USING AVAILABLE UTILITY DATA. THIS SURVEYOR DOES NOT MAKE STATEMENTS OF ACCURACY BASED UPON MAPS AND UTILITY LOCATES OF OTHERS.

SITE DATA

ZONING AND RESTRICTIONS SHOWN HEREON WERE OBTAINED BY A GENERAL REPRESENTATION MADE FOR THE ACCURACY OR COMPLETENESS OF SAID THIRD PARTY INFORMATION. THIS FIRM IS NOT AN EXPERT IN THE INTERPRETATION OF COMPLEX ZONING ORDINANCES...

IMPROVEMENT NOTES

THIS IS A LISTING OF OBSERVED IMPROVEMENTS THAT CROSS DEED LINES. STATEMENT OF OWNERSHIP OR POSSESSION IS NOT THE INTENT OF THIS LISTING.

SURVEYOR NOTES

THIS SURVEY IS SUBJECT TO ANY AND ALL ENFORCEABLE RESTRICTIVE COVENANTS. ITEMS LISTED BELOW MAY REPRESENT AN EASEMENT THAT WAS NOT SHOWN IN RECORDS OR DOCUMENTS.

REVISIONS table with columns for REVISION, DATE, and SURVEY REVIEWED. Includes a date stamp: DATE OF ORIGINAL: DECEMBER 26, 2017.