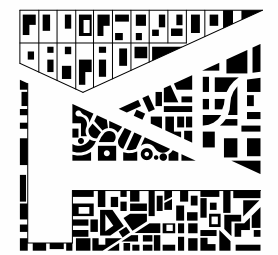


1 GROUND FLOOR-EXISTING
 1/8" = 1'-0"



THOMAS ARCHITECTS

2800 S RIVER RD, #305
 DES PLAINES, IL 60018

O: 847.235.6815

THOMAS@THOMASARCH.COM

EXISTING PLAN

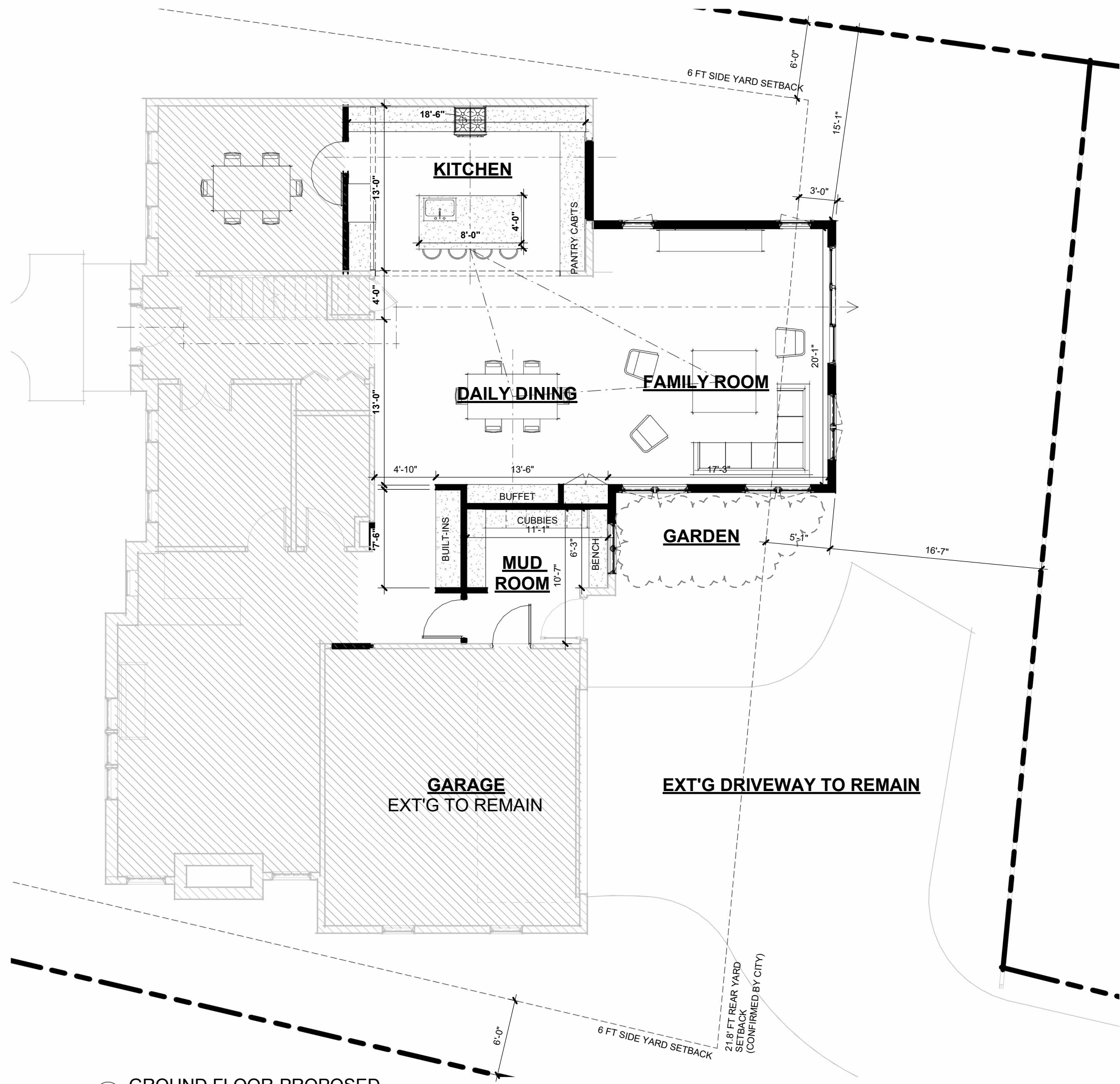
524 S BRAINARD
 NAPERVILLE, IL

23-072

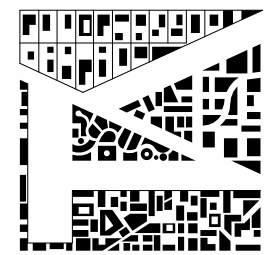
ADDITION - ZBA APPLICATION

DESIGN

ZBA-03



1 GROUND FLOOR-PROPOSED
1/8" = 1'-0"



THOMAS ARCHITECTS
2800 S RIVER RD, #305
DES PLAINES, IL 60018
O: 847.235.6815
THOMAS@THOMASARCH.COM

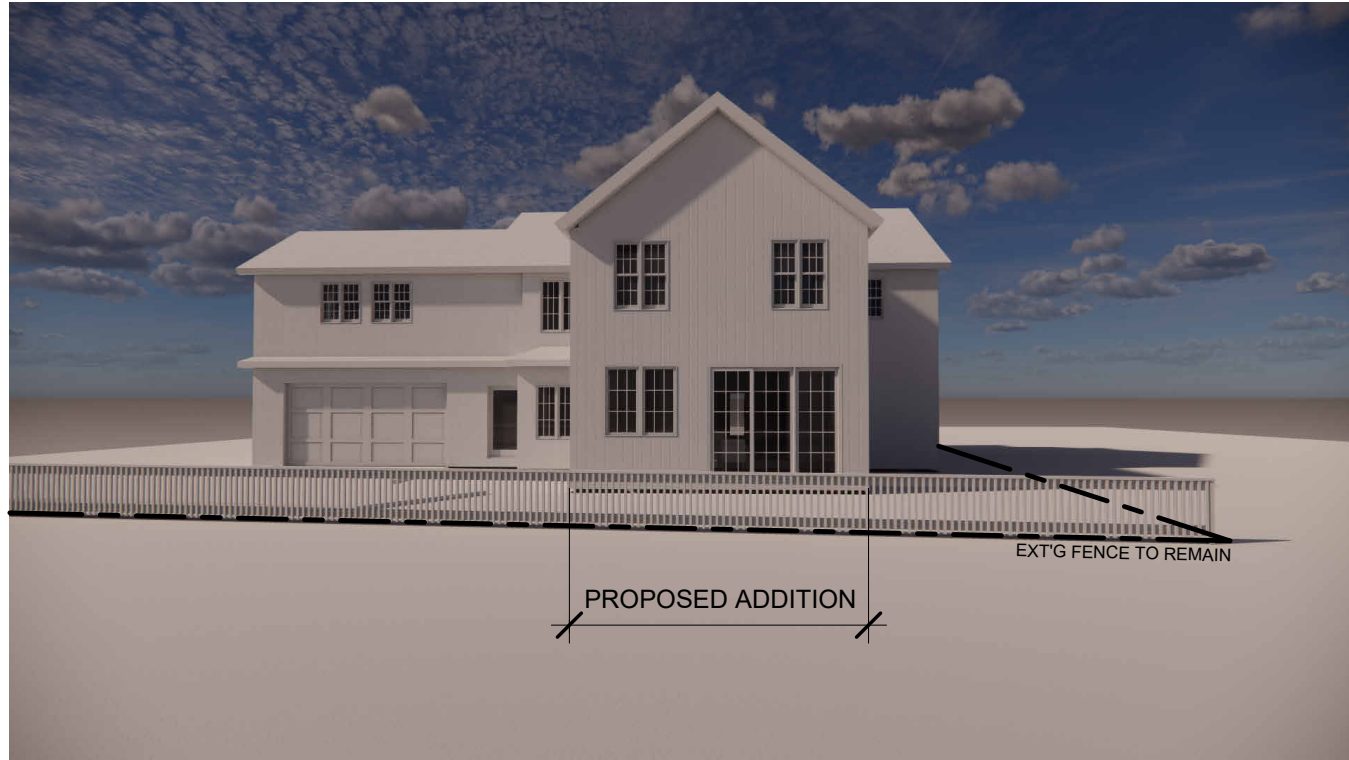
PROPOSED PLAN

524 S BRAINARD
NAPERVILLE, IL

23-072

ADDITION - ZBA APPLICATION

DESIGN ZBA-04



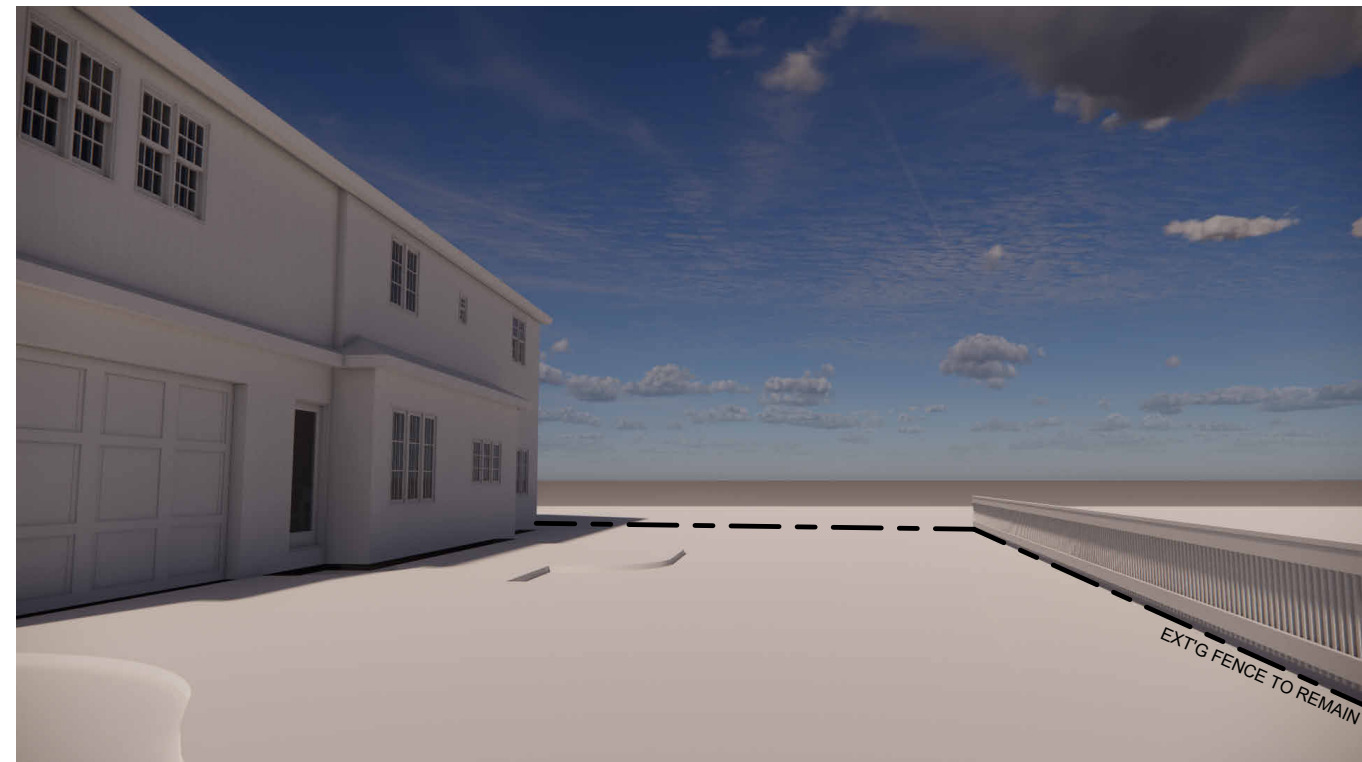
VIEW FROM NEIGHBOR'S PATIO
PROPOSED ADDITION



VIEW FROM EXISTING DRIVEWAY
PROPOSED ADDITION

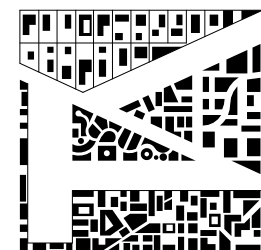


VIEW FROM NEIGHBOR'S PATIO
EXISTING HOME



VIEW FROM EXISTING DRIVEWAY
EXISTING HOME

PRELIMINARY MASSING STUDY (SHARED WITH NEIGHBORS)



**THOMAS
ARCHITECTS**

2800 S RIVER RD, #305
DES PLAINES, IL 60018

O: 847.235.6815

THOMAS@THOMASARCH.COM

MASSING

524 S BRAINARD
NAPERVILLE, IL

23-072

ADDITION - ZBA APPLICATION

DESIGN

ZBA-05