



NORTH

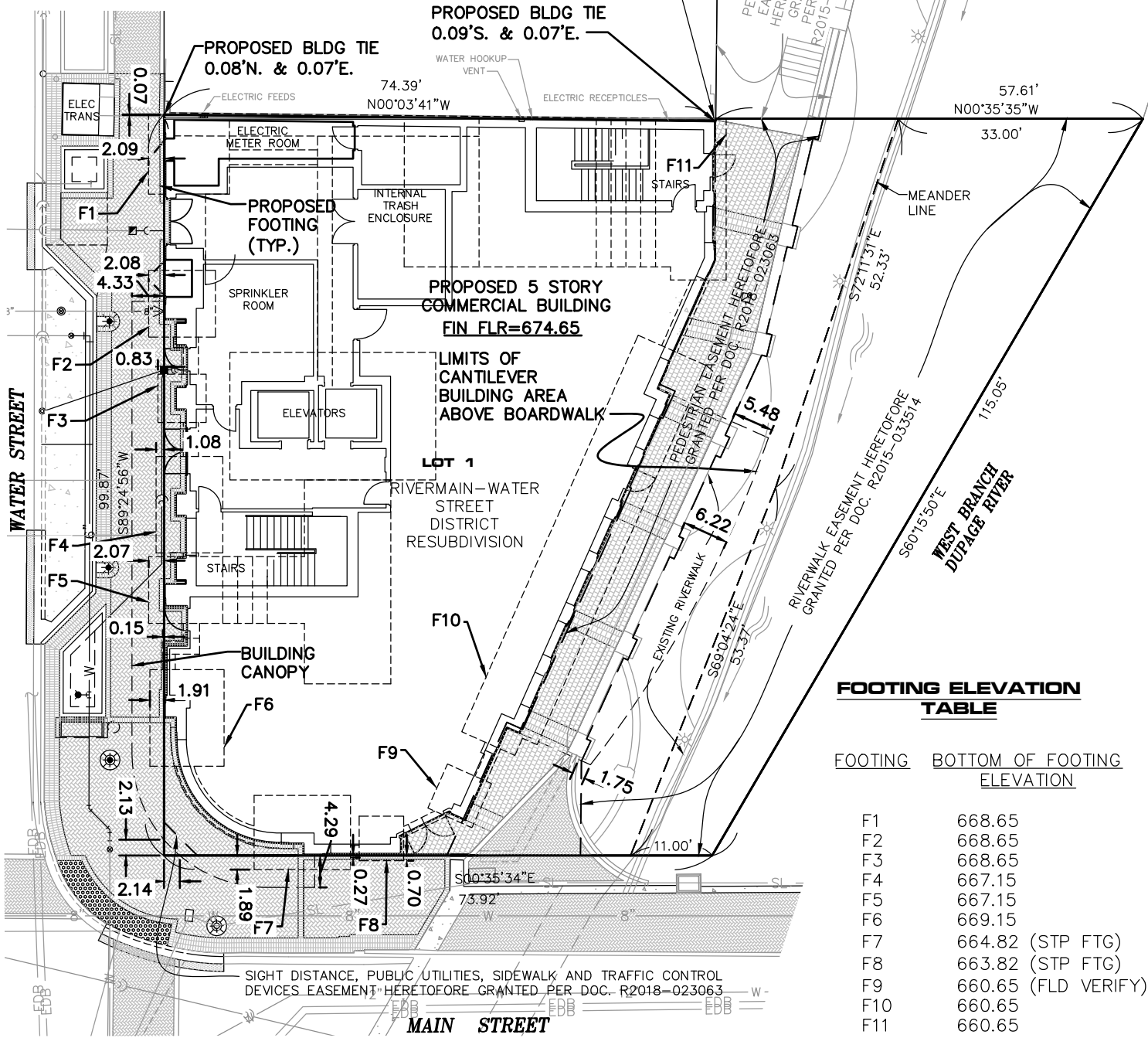
### SUBMITTAL & REVISION RECORD

NO	DATE	DESCRIPTION
▲	05/18/2021	REVISOR PER CITY COMMENTS DATED 04/09/21

**LOT 2**  
RIVERMAIN-WATER STREET  
DISTRICT RESUBDIVISION

**LOT 3**  
WATER STREET  
DISTRICT  
NORTH PHASE PER  
DOC. R2015-033507

**LOT 4**  
WATER STREET DISTRICT  
NORTH PHASE  
PER DOC. R2015-033507



#### FOOTING ELEVATION TABLE

FOOTING	BOTTOM OF FOOTING ELEVATION
F1	668.65
F2	668.65
F3	668.65
F4	667.15
F5	667.15
F6	669.15
F7	664.82 (STP FTG)
F8	663.82 (STP FTG)
F9	660.65 (FLD VERIFY)
F10	660.65
F11	660.65



#### REFERENCE

1. ARCHITECTURAL AND FOUNDATION FOOTING INFORMATION PROVIDED BY CHARLES VINCENT GEORGE ARCHITECTS. ELEVATIONS SHOWN ARE BASED ON FINISH FLOOR: 100.00' = 674.65



**Civil & Environmental Consultants, Inc.**  
1230 East Diehl Road, Suite 200 - Naperville, IL 60563  
630-963-6026 · 877-963-6026  
www.cecinc.com

RIVER MAIN NAPERVILLE LLC  
RIVER MAIN  
315 S. MAIN STREET  
NAPERVILLE, ILLINOIS 60540  
ENCROACHMENT AGREEMENT  
EXHIBIT 01

DRAWN BY: SRH	CHECKED BY: JGC	APPROVED BY: JGC	FIGURE NO.:
DATE: 11/30/2020	DWG SCALE: 1"=30'	PROJECT NO: 196-520.AW00	<b>EX01</b>

P:\2019\196-520\CADD\DWG\AW00-EXHIBITS\196520.AW00-EXHIBIT.dwg EXHIBIT.dwg\C400 LS:(12/3/2020 - shoffman) - LP: 5/18/2021 10:31 AM