



REVISIONS

THIS DESIGN AND THESE DRAWINGS ARE THE PROPERTY OF CAGE ENGINEERING, INC. NO PART OF THIS WORK MAY BE REPRODUCED OR TRANSMITTED IN ANY FORM OR BY ANY MEANS, ELECTRONIC OR MECHANICAL, WITHOUT PRIOR WRITTEN PERMISSION FROM CAGE ENGINEERING, INC.

M/I HOMES OF CHICAGO, LLC
BENTON+MAIN
190 BENTON AVENUE
NAPERVILLE, ILLINOIS

PROJ NO: 250090
ENG: DJB
DATE: 09/16/2025

SHEET TITLE
**REAR YARD
SETBACK
IMPERVIOUS
AREA EXHIBIT**

SHEET NUMBER
RY-EX1
1 OF 2

LEGEND

PERVIOUS AREA

IMPERVIOUS AREA

REAR YARD SETBACK IMPERVIOUS AREA CALCULATION

SETBACK 1

IMPERVIOUS AREA = 3,310 SF

TOTAL AREA OF 25' REAR YARD SETBACK = 4,955 SF

IMPERVIOUS AREA PERCENTAGE = $3,310/4,955 = 66.8\%$

SETBACK 2

IMPERVIOUS AREA = 2,099 SF

TOTAL AREA OF 25' REAR YARD SETBACK = 3,310 SF

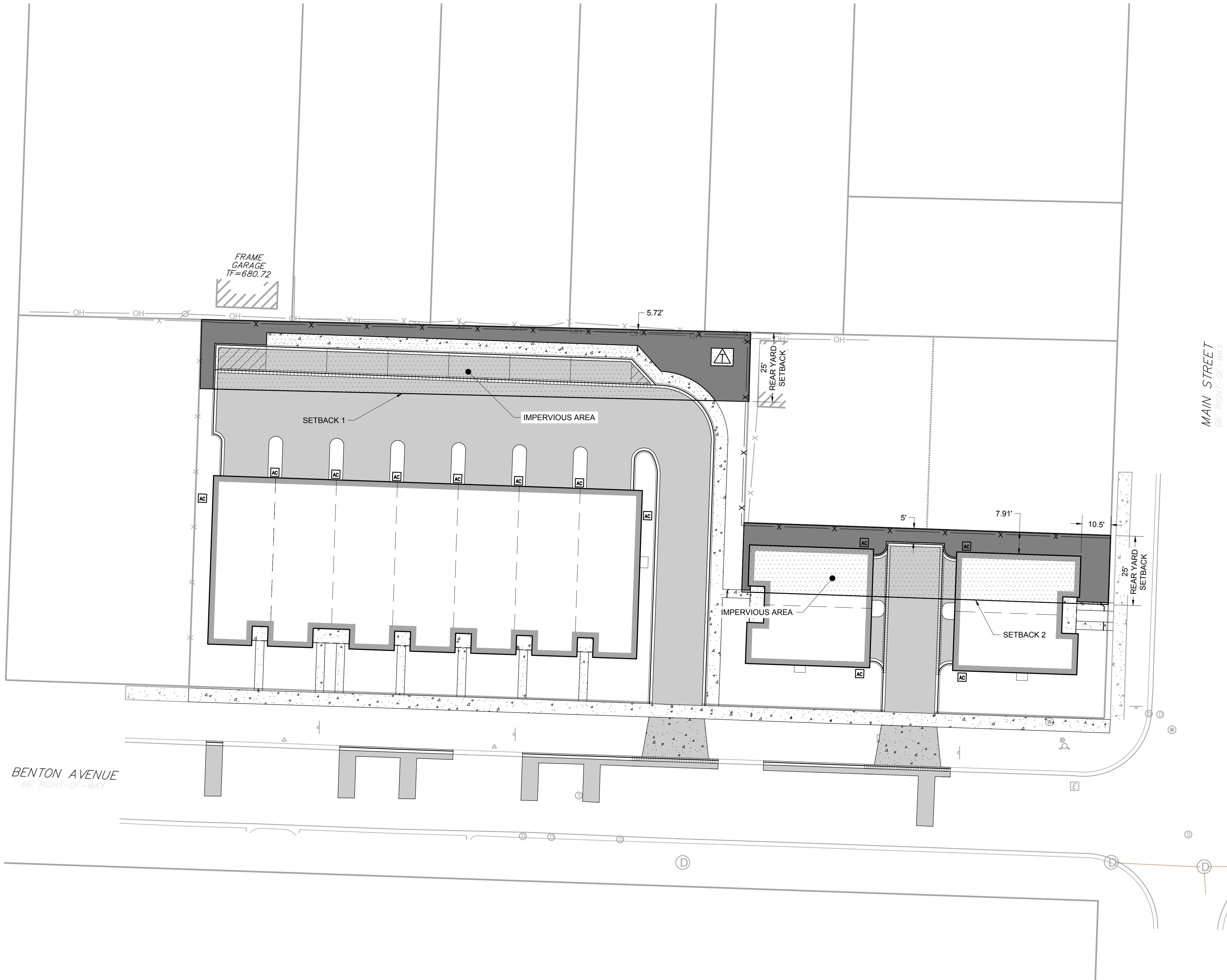
IMPERVIOUS AREA PERCENTAGE = $2,099/3,310 = 63.4\%$

TOTAL SETBACK AREA

IMPERVIOUS AREA = 5,409SF

TOTAL AREA OF 25' REAR YARD SETBACK = 8,265 SF

IMPERVIOUS AREA PERCENTAGE = $5,409/8,265 = 65.4\%$



0 20' 40'

1" = 20' (HORIZONTAL)