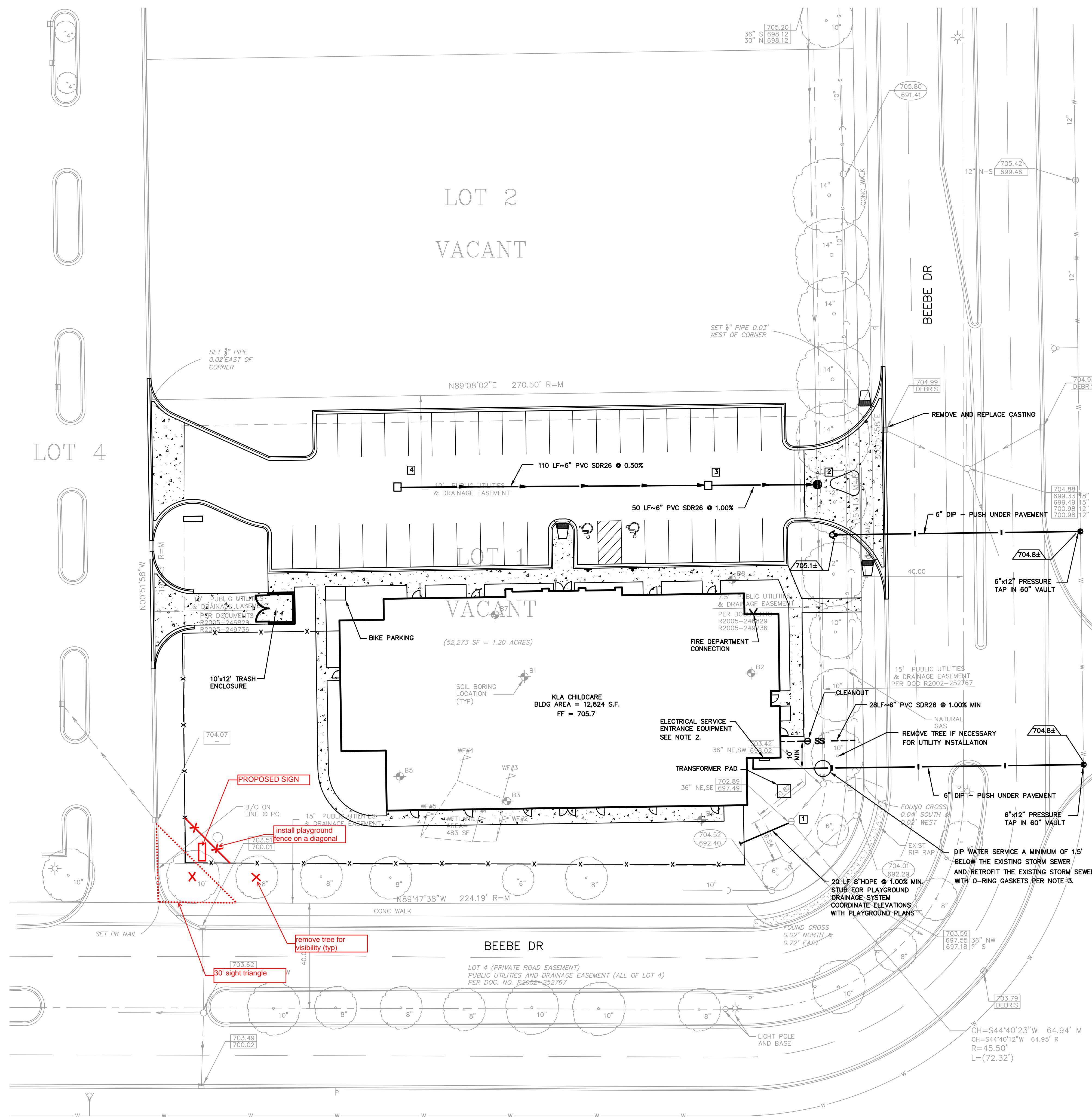


STORM SEWER STRUCTURES

- 1 EXISTING MANHOLE RECONSTRUCT TO RAISE RIM TO 704.7
EXISTING RIM = 702.89
INV = 697.49 (36" NE, SW)
INV = 697.49 (12")
- 2 60" DIA. MH, OPEN LID
RIM = 705.0
INV = 698.06 (36" N, S)
INV = 698.06 (12")
- 3 2' DIA. INLET
RIM = 704.00
INV = 700.75
- 4 2' DIA. INLET
RIM = 704.00
INV = 701.30



SCALE: 1" = 20'

Stormwater Management Calculations

Impervious Area	
Building	12,824 SF
Curb & Pavement	19,122 SF
Playground (50%)	3,828 SF
Walks	2,171 SF
Trash & Transformer	130 SF
Total Impervious Area	38,075 SF

UTILITY NOTES:

- QUANTITIES SHOWN HEREON ON ARE FOR INFORMATIONAL PURPOSES ONLY. THE CONTRACTOR IS TO VERIFY ALL QUANTITIES RELATED TO CONSTRUCTION.
- ALL RIMS AND INVERTS ARE TO BE FIELD VERIFIED PRIOR TO THE START OF CONSTRUCTION. IF ANY DISCREPANCIES APPEAR, THE ENGINEER IS TO BE NOTIFIED IMMEDIATELY.
- ALL SEWER AND WATER CROSSINGS ARE TO CONFORM TO EPA REGULATIONS FOR PROPER SEPARATION. FOR WATERMAIN BENEATH STORM SEWER CROSSINGS, CONTRACTOR TO PROVIDE MINIMUM 18" SEPARATION AND O-RING GASKETED PIPE STORM SEWER BETWEEN ADJACENT MANHOLES. IN WATERMAIN CROSSINGS BENEATH SANITARY SEWER, THE CONTRACTOR TO PROVIDE MINIMUM 18" SEPARATION AND BOTH PIPES SHALL BE WATERMAIN QUALITY PIPE. IF THE LINES (STORM OR SANITARY AND WATER) CANNOT MEET THE HORIZONTAL OR VERTICAL SEPARATIONS, THEN BOTH THE SEWER AND WATER LINES SHALL BE WATERMAIN QUALITY PIPE. SEE DETAIL FOR WATER AND SEWER SEPARATION REQUIREMENTS. THE SEWER SHALL BE "WATERMAIN QUALITY SEWER PIPE" CONFORMING TO ASTM D2241 OR AWWA C900 PVC PIPE.
- THE LOCATIONS OF EXISTING UNDERGROUND UTILITIES, SUCH AS WATER MAINS, SEWERS, GAS LINES, ELECTRIC LINES, TELEPHONE LINES, ETC. AS SHOWN ON THE PLANS HAVE BEEN DETERMINED FROM THE BEST AVAILABLE INFORMATION AND IS GIVEN FOR THE CONVENIENCE OF THE CONTRACTOR. HOWEVER, THE ENGINEER AND OWNER DO NOT ASSUME RESPONSIBILITY FOR THE ACCURACY OF THE LOCATIONS SHOWN. IT SHALL BE THE CONTRACTOR'S RESPONSIBILITY TO CONTACT ALL UTILITY COMPANIES AND THEIR FACILITIES SHALL BE LOCATED PRIOR TO ANY WORK.
- PRIOR TO THE START OF CONSTRUCTION, THE CONTRACTOR SHALL EXPOSE ANY UTILITIES OR OTHER OBSTRUCTIONS TO BE CROSSED BY THE PROPOSED UTILITIES, AND SHALL NOTIFY THE ENGINEER IMMEDIATELY IF THERE ARE ANY CONFLICTS WITH THE PROPOSED UTILITY GRADES.
- FOR ALL LIGHTING INFORMATION, PLEASE REFER TO THE APPROVED PHOTOMETRIC PLAN PREPARED BY OTHERS.

NOTES:

- FOR PIPING AND OTHER IMPROVEMENTS WITHIN PLAYGROUND AREA SEE PLAYGROUND PLANS BY OTHERS.
- CONTRACTOR TO SUBMIT CUT SHEETS OF METER/CT EQUIPMENT TO CITY FOR APPROVAL PRIOR TO ORDERING EQUIPMENT.

INTECH CONSULTANTS, INC.
1989 UNIVERSITY LANE, SUITE D
LISLE, ILLINOIS 60532
ENGINEERS - SURVEYORS
ILLINOIS REGISTRATION NO. 184-001040
PHONE: 630-964-5666

ASR ESTATE, LLC
3644 WHITE EAGLE DR.
NAPERVILLE, IL 60564

KLA CHILDCARE FACILITY
NAPERVILLE, ILLINOIS

UTILITY PLAN

SCALE	1"=20'
DATE	3-1-21
DRAWN	SJP
DESIGNED	EFS
PROJECT NO.	2020-004
SHEET	7 OF 10

REVIEW SET
NOT FOR CONSTRUCTION