

An aerial rendering of a commercial development in Naperville, Illinois. The scene shows a multi-story building with a courtyard area containing trees and people. A large parking lot is visible to the right, and a multi-lane road with traffic is on the left. The overall image has a warm, golden-orange tint. A logo is overlaid in the upper left quadrant, featuring a stylized 'L' shape in green and blue, a yellow '7' shape, and the text 'BLOCK 59' in blue and orange, with 'NAPERVILLE' in smaller blue letters below it.

BLOCK 59
NAPERVILLE

A small version of the 'BLOCK 59' logo is displayed on a curved, cylindrical structure. The logo consists of a stylized 'L' shape in green and blue, a yellow '7' shape, and the text 'BLOCK 59' in blue and orange, with 'NAPERVILLE' in smaller blue letters below it.

BLOCK 59
NAPERVILLE

Proposed Valet Parking

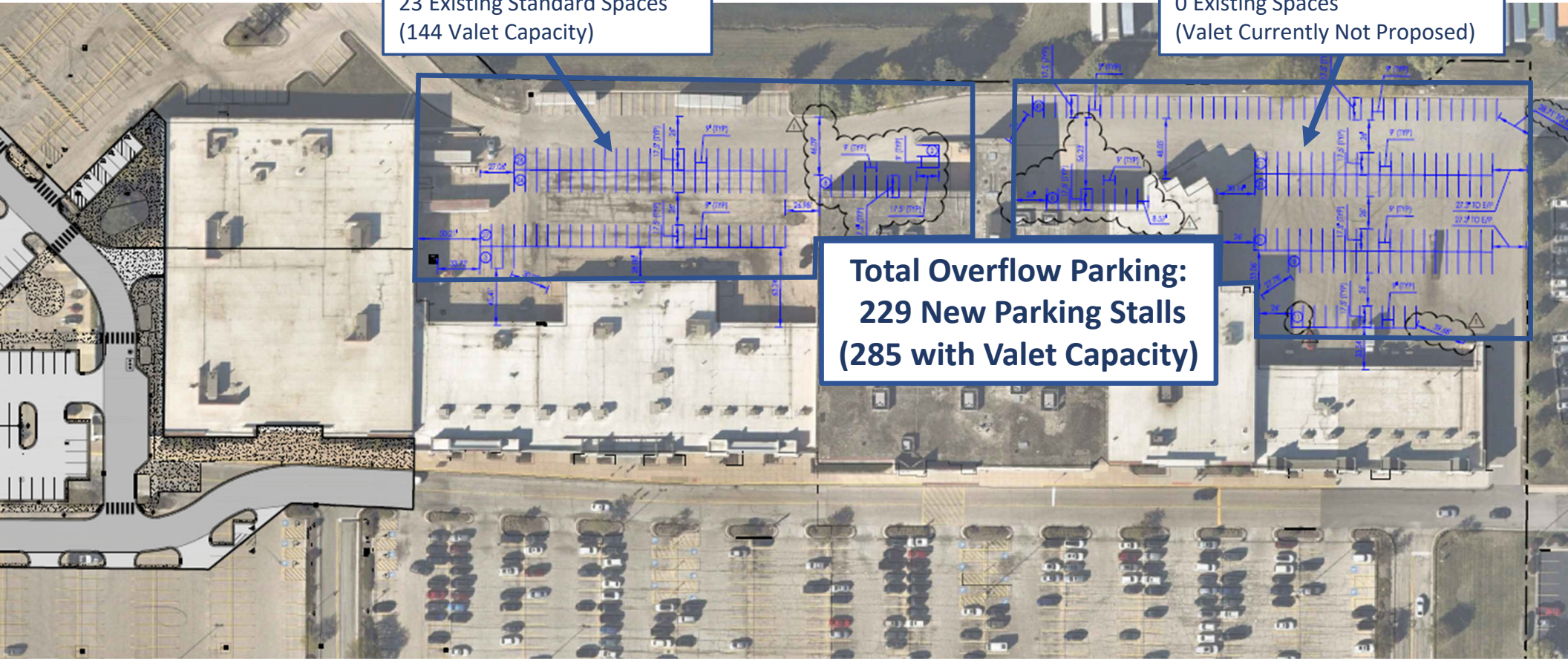


Event & Valet Overflow Parking

Overflow Valet Parking:
88 New Standard Spaces
23 Existing Standard Spaces
(144 Valet Capacity)

Overflow Event Parking:
141 New Standard Spaces
0 Existing Spaces
(Valet Currently Not Proposed)

**Total Overflow Parking:
229 New Parking Stalls
(285 with Valet Capacity)**



Valet & Overflow Parking Options



Parking Summary:

3,796 Spaces Required by Code

3,358 Spaces Provided (Block 59 & Westridge Ct.)

(438) Space Deficit, Per Code*

Total On-Site Additional Parking Capacity (valet and new): **375 cars****

- Valet Parking – 300 existing spaces utilized for valet parking (390 valet capacity – 30% valet efficiency), for a net capacity gain of 90 cars
- Event & Overflow Parking – 229 new spaces can be added for temporary overflow parking and valet parking (285 with valet capacity), for a net capacity gain of 285 cars

*Includes 350 required stalls for event plaza & 218 stalls for a future expansion of 2 screens for Hollywood Palms

**Assumes maximizing use of valet spaces