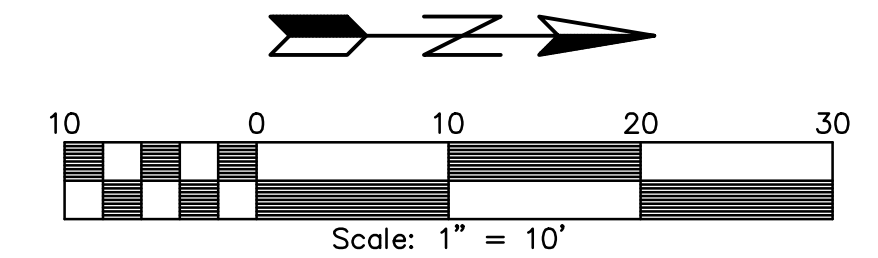


PRELIMINARY TOPOGRAPHICAL SITE DEVELOPMENT PLAN

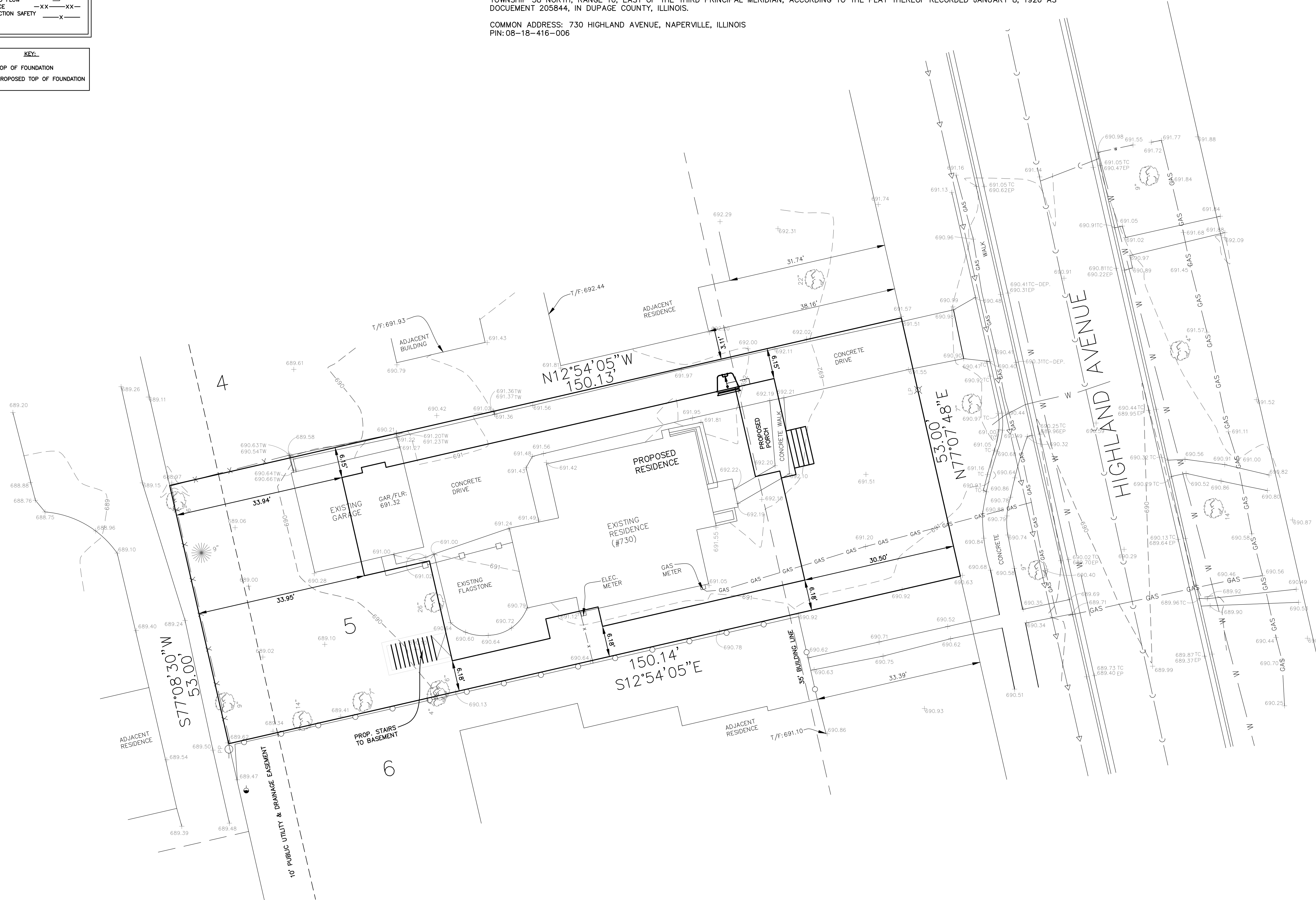
LOT 5 IN BLOCK 4 IN ARTHUR T. McINTOSH AND COMPANY'S NAPERVILLE HIGHLANDS, BEING A SUBDIVISION OF PARTS OF SECTION 18 AND 19, TOWNSHIP 38 NORTH, RANGE 10, EAST OF THE THIRD PRINCIPAL MERIDIAN, ACCORDING TO THE PLAT THEREOF RECORDED JANUARY 8, 1926 AS DOCUMENT 205844, IN DUPAGE COUNTY, ILLINOIS.

COMMON ADDRESS: 730 HIGHLAND AVENUE, NAPERVILLE, ILLINOIS
PIN: 08-18-416-006



EXISTING GRADE	+ XXX.XX
EXISTING CONTOUR	-XXX-
PROPOSED GRADE	+XXX.XX
PROPOSED CONTOUR	-XXX-
PROPOSED FLOW	==>
SILT FENCE	-XX-XX-
CONSTRUCTION SAFETY FENCE	-X-

KEY:	
T/F	= TOP OF FOUNDATION
P.T.F.	= PROPOSED TOP OF FOUNDATION



PREPARED FOR: LAKEWEST CUSTOM HOMES

DRAWN BY: B.L.
CHECKED BY: J.G.
APPROVED BY: J.G.



ENGINEERING
RESOURCE ASSOCIATES
35701 WEST AVENUE, SUITE 150
WARRENVILLE, ILLINOIS 60555
PHONE (630) 393-3060
FAX (630) 393-2152

10 S. RIVERSIDE PLAZA, SUITE 875
CHICAGO, ILLINOIS 60606
PHONE (312) 474-7841
FAX (312) 474-6099

2416 GALEN DRIVE
CHAMPAIGN, ILLINOIS 61821
PHONE (217) 351-6268
FAX (217) 355-1902

PRELIMINARY SITE PLAN DATED: DECEMBER 6, 2017

PROFESSIONAL DESIGN FIRM NUMBER: 184.001186