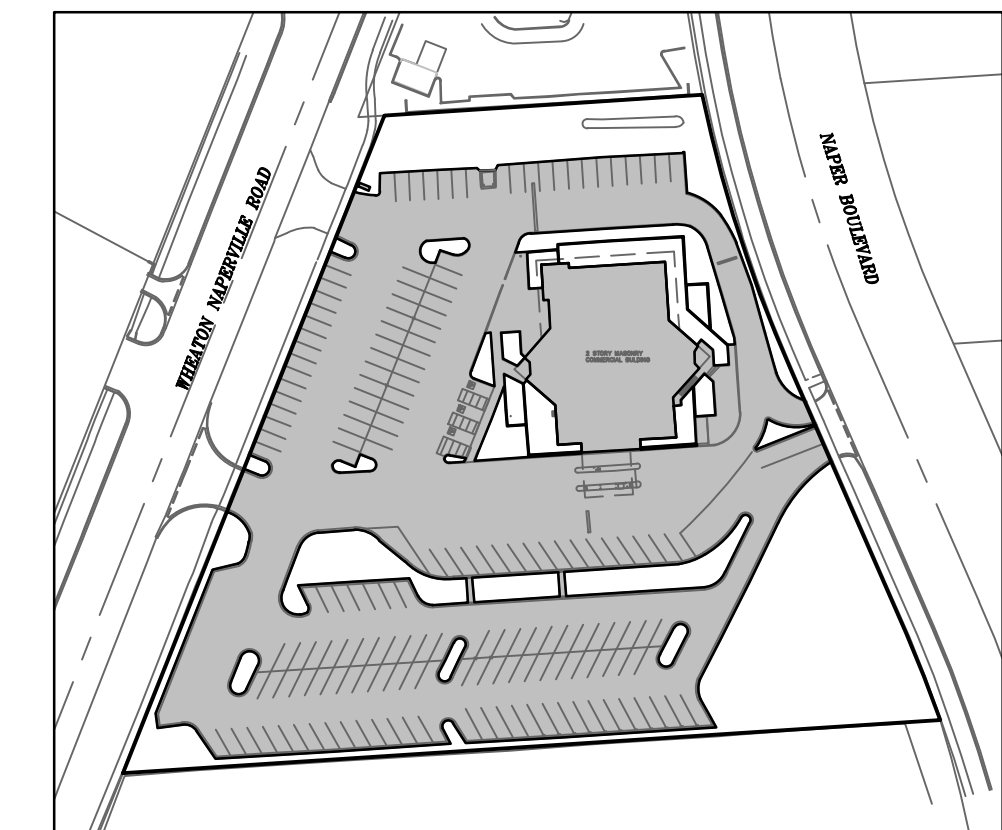
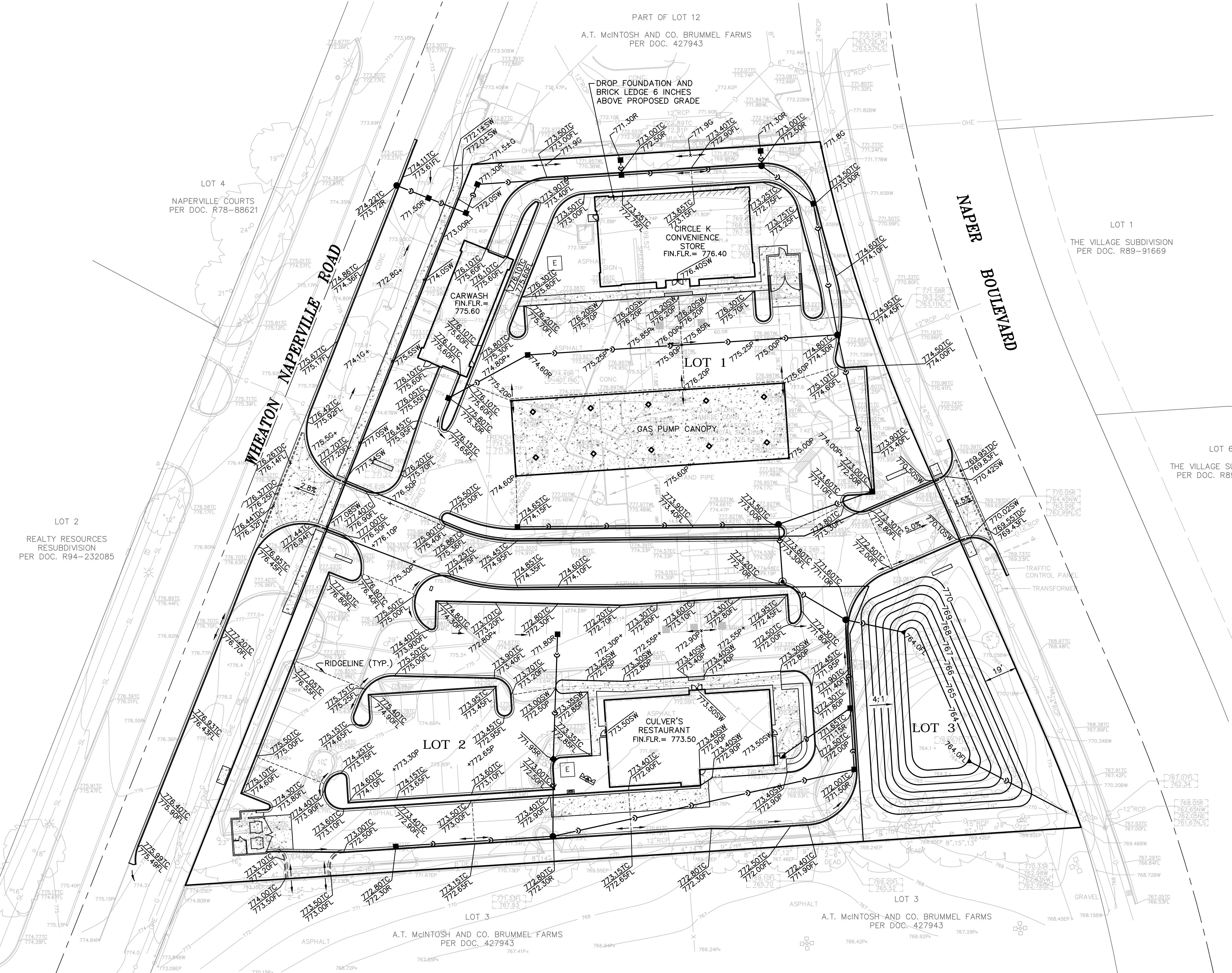
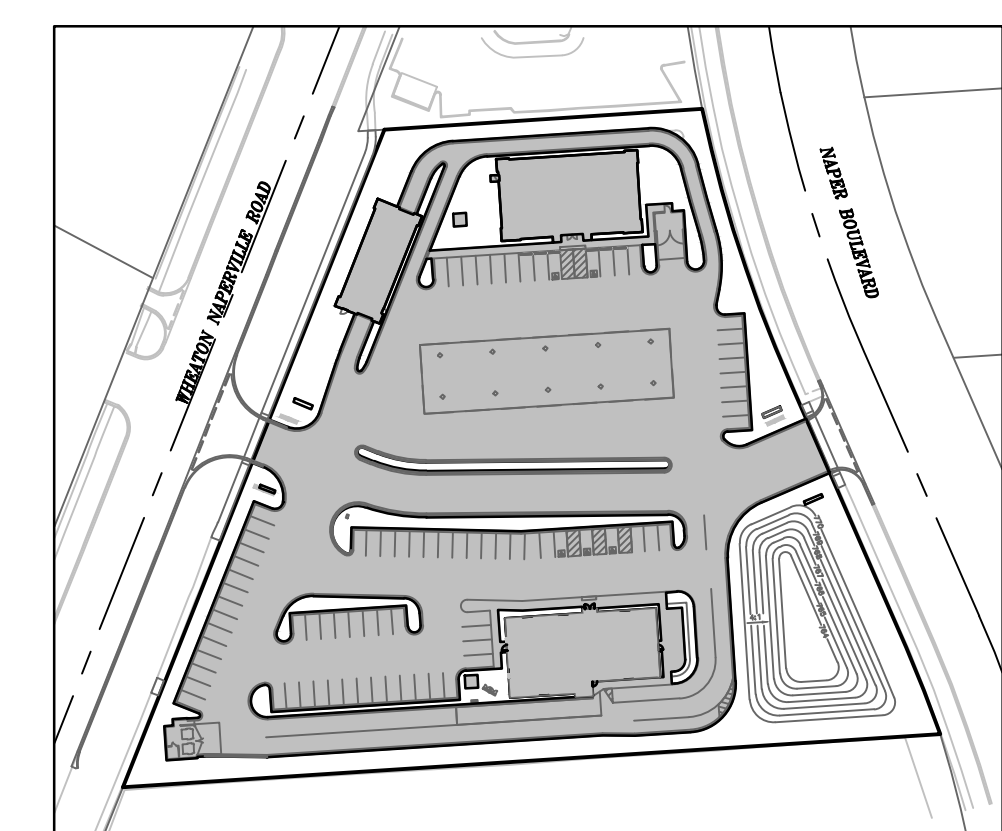


0 15 30 60
 SCALE: 1"=30'
 BASIS OF BEARINGS: ILLINOIS STATE PLANE - EAST ZONE (TRUE NORTH)



EXISTING PERVIOUS/IMPERVIOUS CONDITIONS
 1"=120'



PROPOSED PERVIOUS/IMPERVIOUS CONDITIONS
 1"=120'

PERVIOUS/IMPERVIOUS CALCULATIONS:			
	IMPERVIOUS AREA	PERVIOUS AREA	PROJECT AREA
EXISTING	97,156 S.F.	42,482 S.F.	139,638 S.F.
PROPOSED	96,384 S.F.	43,254 S.F.	139,638 S.F.
NET INCREASE	-772 S.F.		

NET INCREASE IN IMPERVIOUS AREA IS LESS THAN 2,500 S.F., THEREFORE NO BEST MANAGEMENT PRACTICES REQUIRED.

DETENTION BASIN VOLUMES					
STAGE	EXISTING NORTH STORAGE VOLUME (ACRE-FT)	EXISTING SOUTHEAST BASIN STORAGE VOLUME (ACRE-FT)	TOTAL EXISTING STORAGE VOLUME (ACRE-FT)	PROPOSED STORAGE VOLUME (ACRE-FT)	ASBUILT STORAGE VOLUME (ACRE-FT)
764.0	0.00	0.00	0.00	0.00	-0-
765.0	0.00	0.03	0.03	0.05	-0-
766.0	0.00	0.10	0.10	0.12	-0-
767.0	0.00	0.20	0.20	0.22	-0-
768.0	0.00	0.32	0.32	0.34	-0-
769.0	0.00	0.48	0.48	0.50	-0-
770.0	0.01	0.00	0.49	0.69	-0-
771.0	0.07	0.00	0.56		

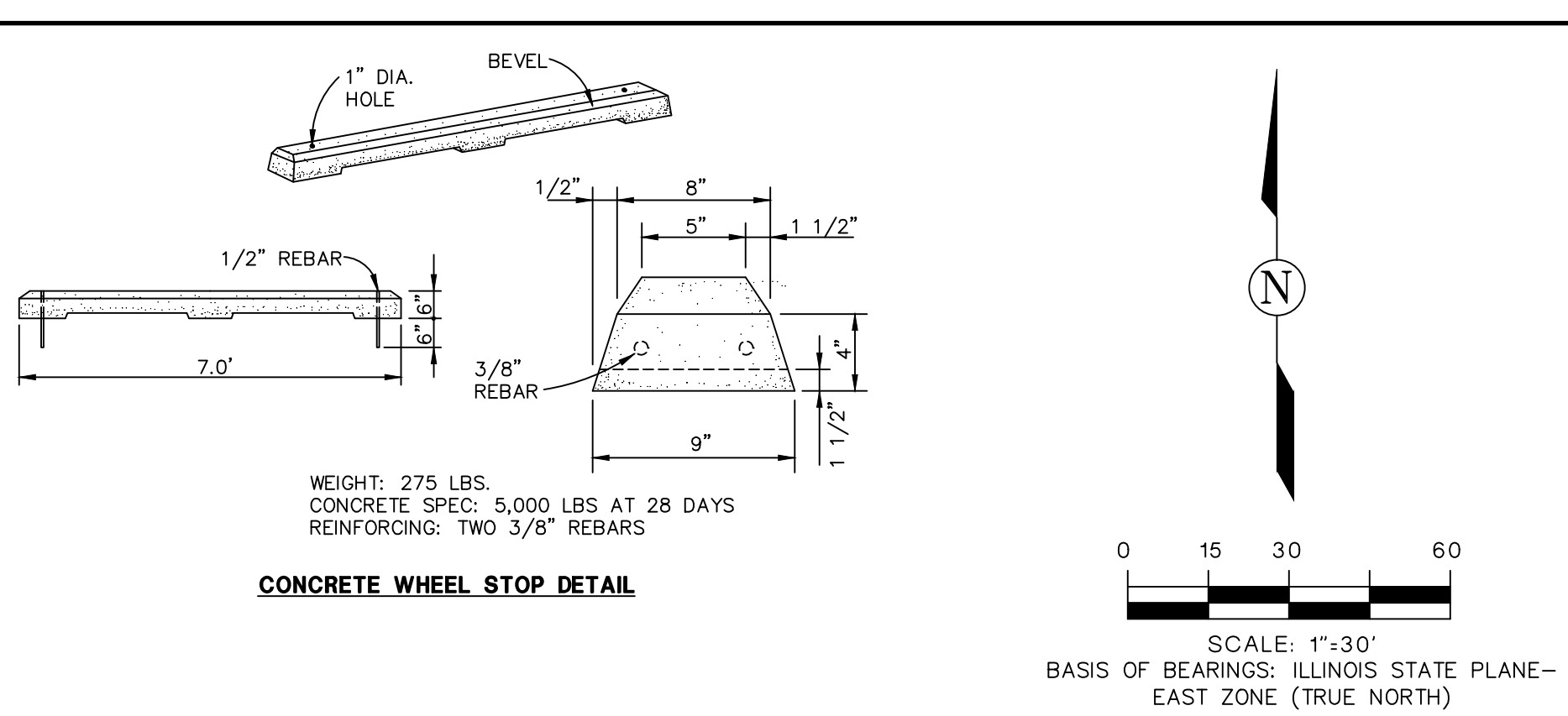
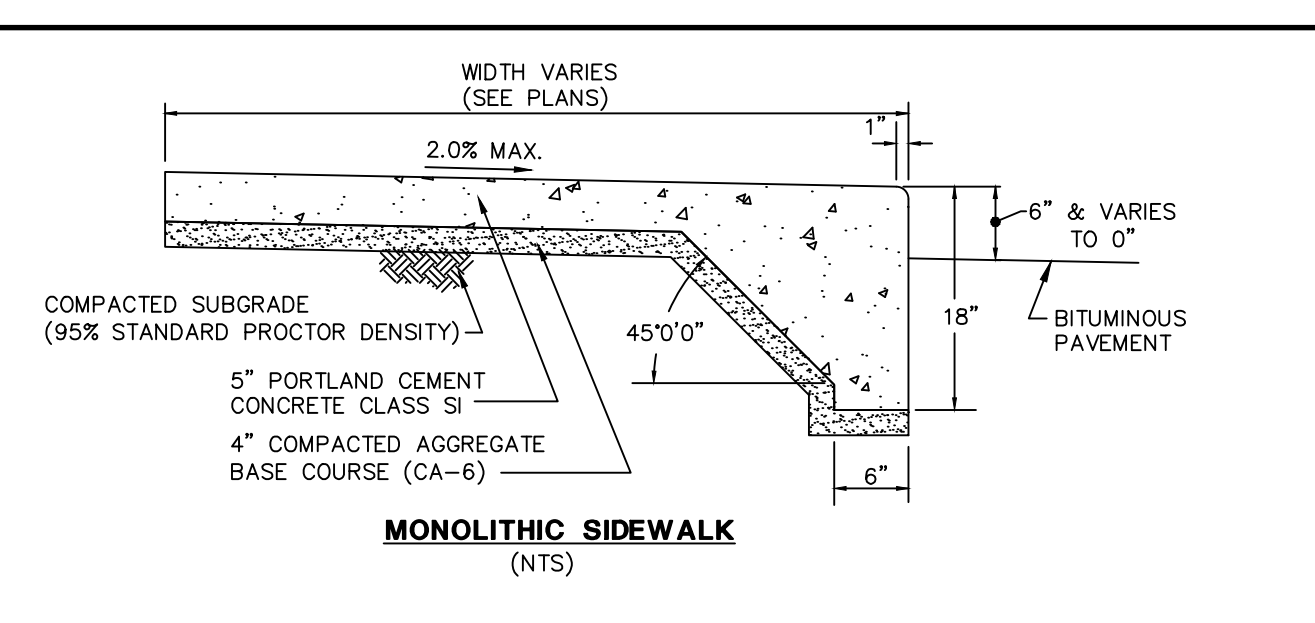
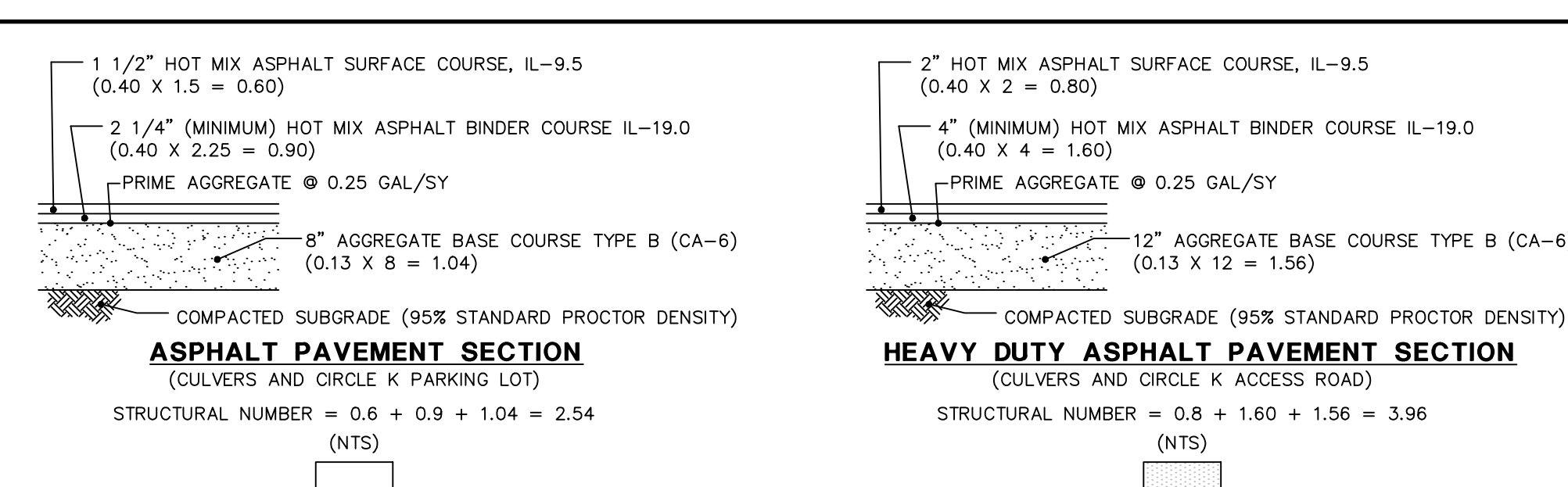
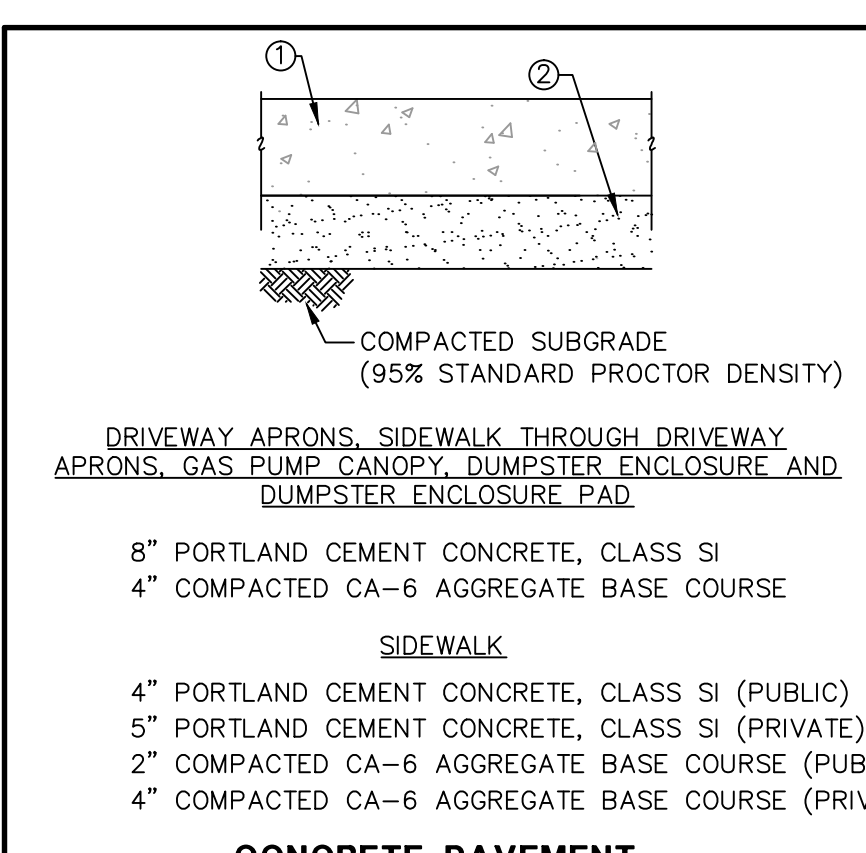
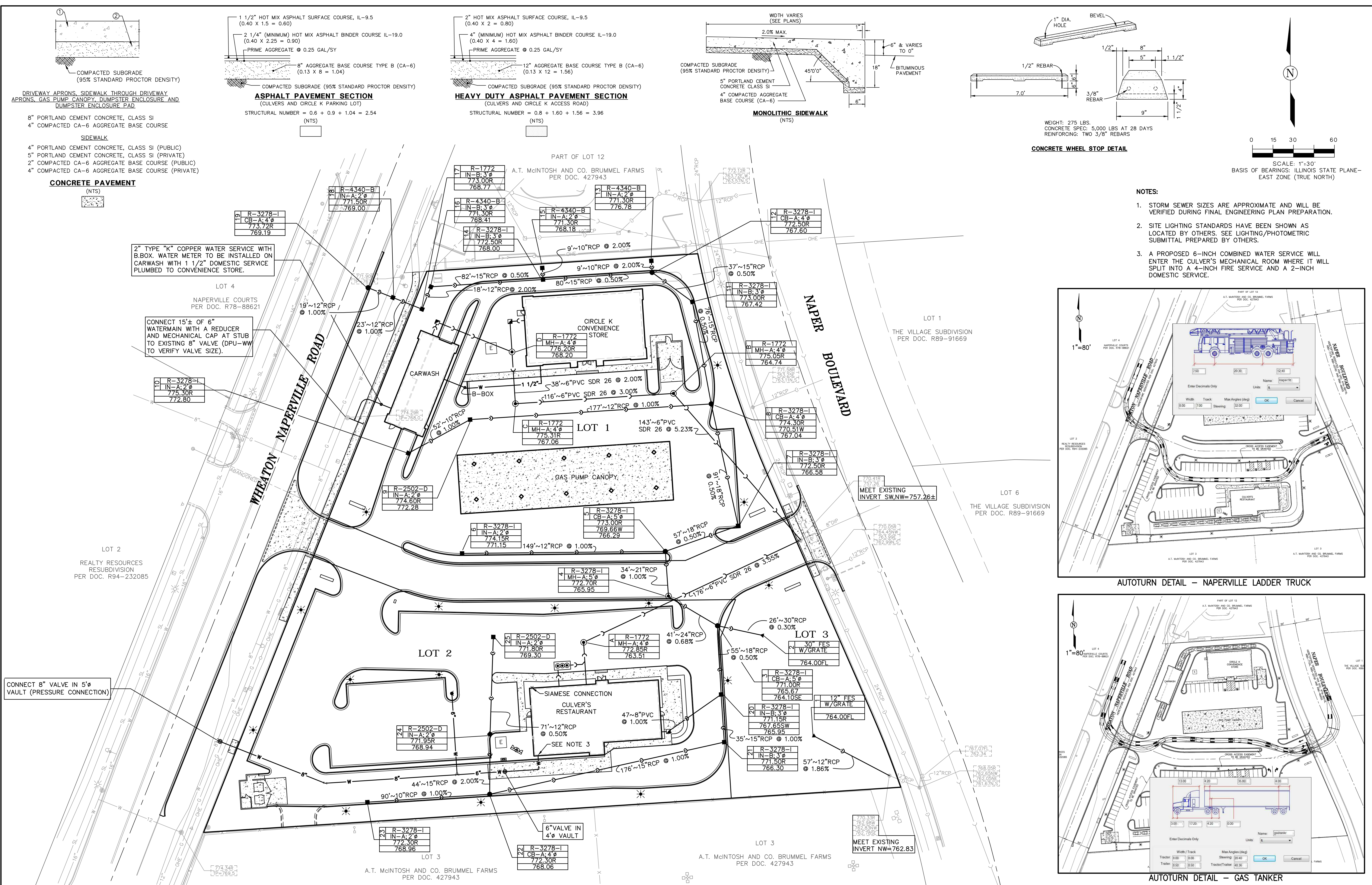
COPYRIGHT 2018 ROAKE AND ASSOCIATES, INC. ALL RIGHTS RESERVED

ROAKE AND ASSOCIATES, INC.
 CONSULTING ENGINEERS • LAND SURVEYORS • PLANNERS
 1684 QUINCY AVENUE, SUITE 100A • NAPERVILLE, ILLINOIS 60640
 TEL (630) 366-3232 • FAX (630) 366-3287

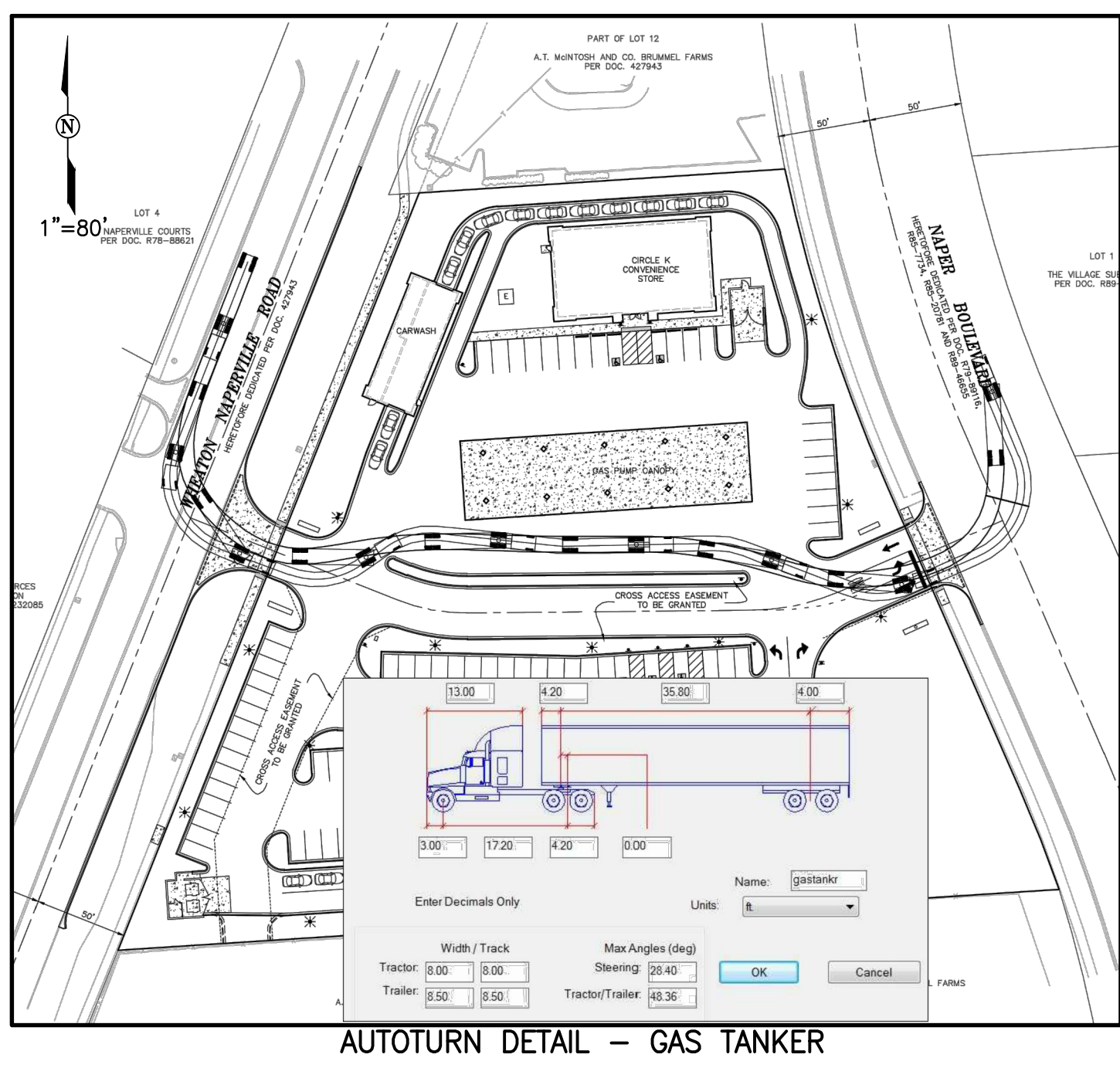
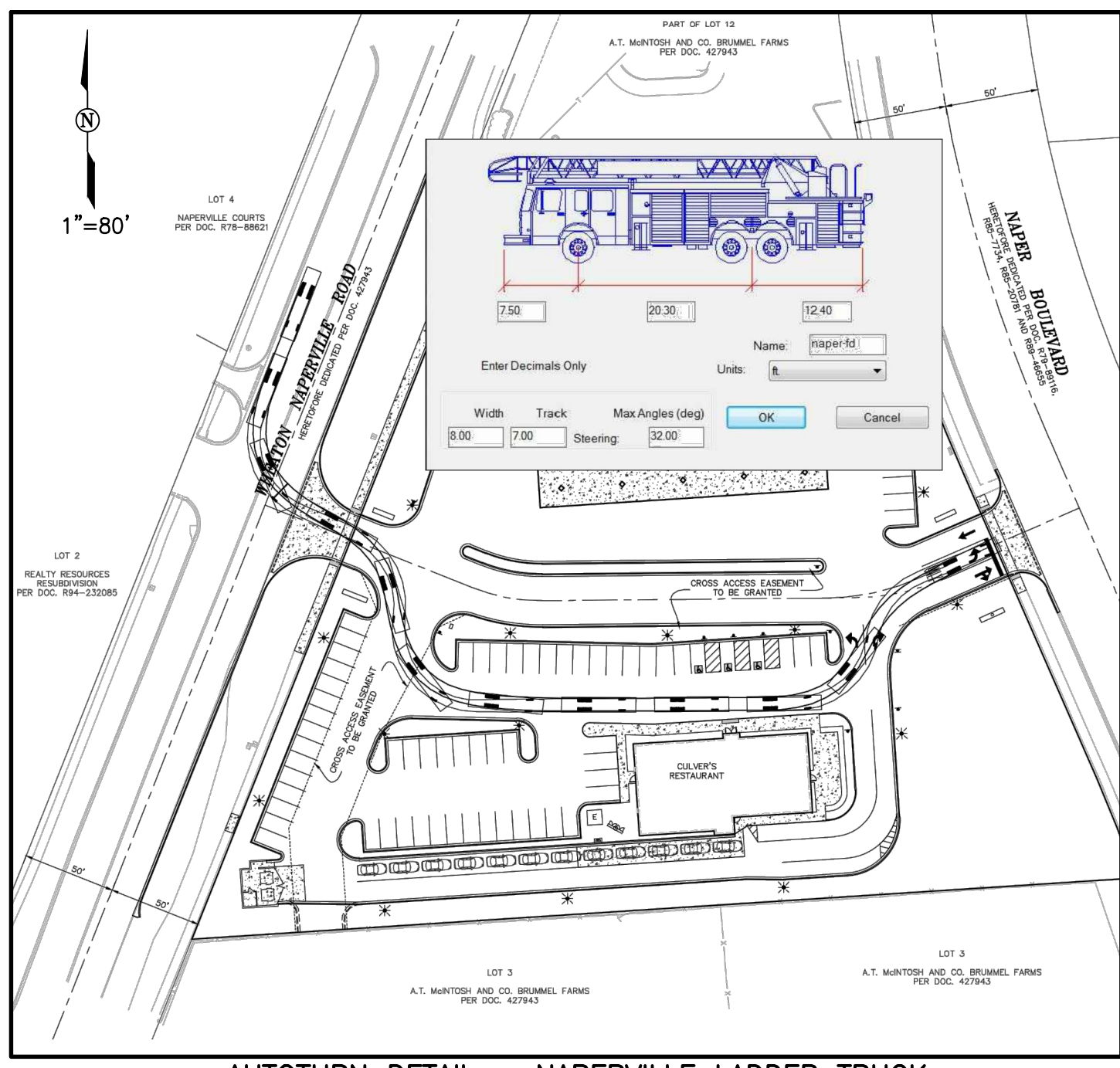
PREPARED FOR:
TARTAN REALTY GROUP, INC.
 350 WEST HUBBARD STREET, #640
 CHICAGO, ILLINOIS 60654
 TEL. (312) 377-8375
 FAX. (312) 377-8351

REVISIONS					
NO.	DATE	DESCRIPTION	NO.	DATE	DESCRIPTION
1	10/22/18	NO REVISION THIS SHEET			
2	11/05/18	REVISED PER CITY RW (10/19/18)			

TARTAN POINT SUBDIVISION - NAPERVILLE, ILLINOIS
 PRELIMINARY ENGINEERING - GRADING PLAN
 DRN./CKD. BY:SRH/JGC/MEF FILE: 8533P FLD. BK./PG.: 273/30-31 SHEET NO. 3
 SCALE: 1"=30' DATE: 09/25/18 JOB NO.: 853.003 2 OF 3



- NOTES:**
- STORM SEWER SIZES ARE APPROXIMATE AND WILL BE VERIFIED DURING FINAL ENGINEERING PLAN PREPARATION.
 - SITE LIGHTING STANDARDS HAVE BEEN SHOWN AS LOCATED BY OTHERS. SEE LIGHTING/PHOTOMETRIC SUBMITTAL PREPARED BY OTHERS.
 - A PROPOSED 6-INCH COMBINED WATER SERVICE WILL ENTER THE CULVER'S MECHANICAL ROOM WHERE IT WILL SPLIT INTO A 4-INCH FIRE SERVICE AND A 2-INCH DOMESTIC SERVICE.



ROAKE AND ASSOCIATES, INC.
 CONSULTING ENGINEERS • LAND SURVEYORS • PLANNERS
 1684 QUINCY AVENUE, SUITE 100A • NAPERVILLE, ILLINOIS 60640
 TEL (630) 366-3232 • FAX (630) 366-3267

PREPARED FOR:
TARTAN REALTY GROUP, INC.
 350 WEST HUBBARD STREET, #640
 CHICAGO, ILLINOIS 60654
 TEL. (312) 377-8375
 FAX. (312) 377-8351

NO.		DATE		DESCRIPTION	
1	10/22/18	NO REVISION THIS SHEET			
2	11/05/18	REVISE PER CITY RW (10/19/18)			

TARTAN POINT SUBDIVISION - NAPERVILLE, ILLINOIS
 PRELIMINARY ENGINEERING - UTILITY PLAN
 DRN./CKD. BY:SRH/JGC/MEF FILE: 8533P FLD. BK./PG.: 273/30-31
 SCALE: 1"=30' DATE: 09/25/18 JOB NO.: 853.003 SHEET NO. 3 OF 3

G:\853\003\PRELIMINARY\8533P.dwg, UTILITY, 11/05/2018 2:31:54 PM, steveh

© COPYRIGHT 2018 ROAKE AND ASSOCIATES, INC. ALL RIGHTS RESERVED