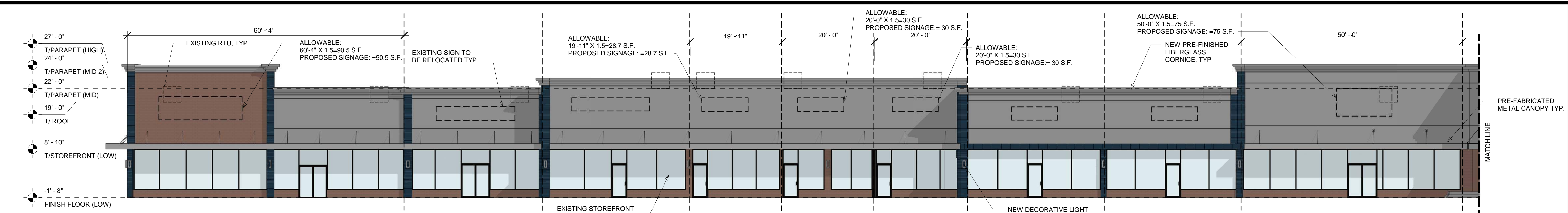
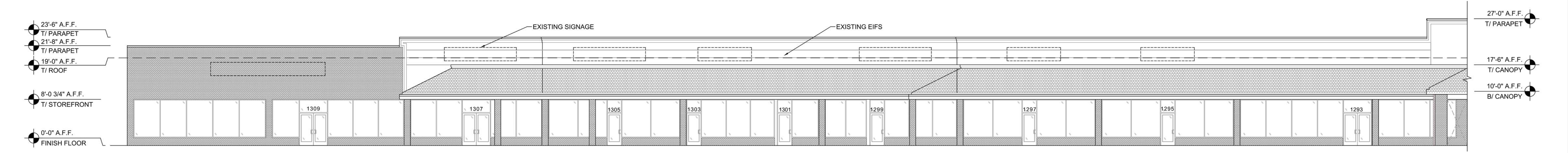


SEAL:

**THIS DOCUMENT IS NOT
FOR REGULATORY
APPROVAL,
PERMITTING,
OR CONSTRUCTION.**



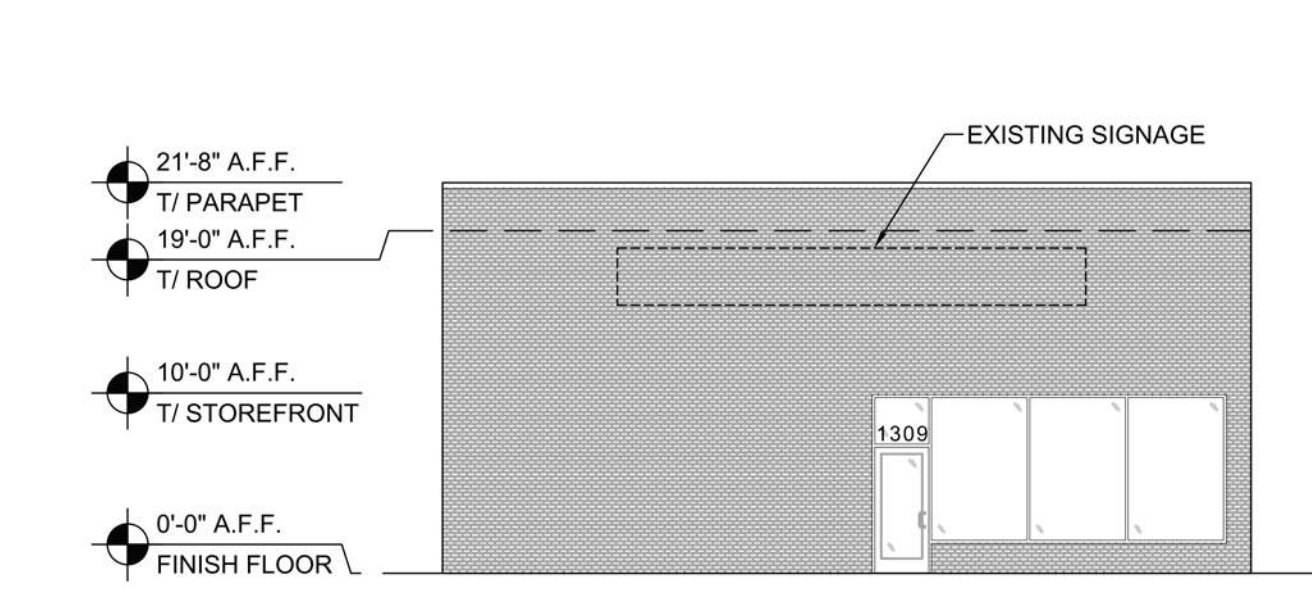
7 PROPOSED FACADE RENOVATION - NORTH ELEVATION
3/32" = 1'-0"



6 EXISTING NORTH ELEVATION
3/32" = 1'-0"



5 PROPOSED FACADE RENOVATION - EAST ELEVATION
3/32" = 1'-0"



4 EXISTING EAST ELEVATION
3/32" = 1'-0"

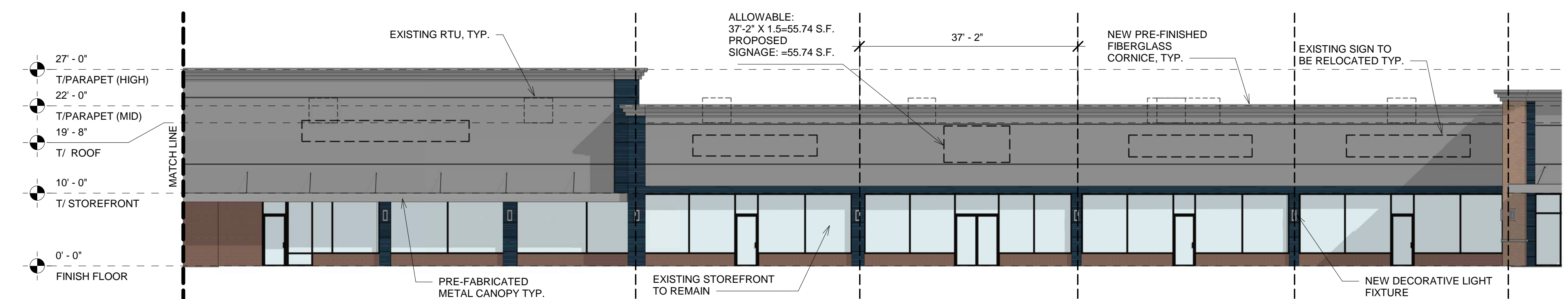
MATERIALS LEGEND

- STACKED STONE PAGOSA PROF NATIONWIDE
- NEW BRICK / REFINISHED BRICK TO MATCH EXISTING
- PRE-FINISHED FIBERGLASS CORNICE
- EIFS - PAINT BENJAMIN MOORE "RAINSTORM"
- ALUMINUM COMPOSITE MATERIAL (ACM) ARCHITECTURAL PANEL

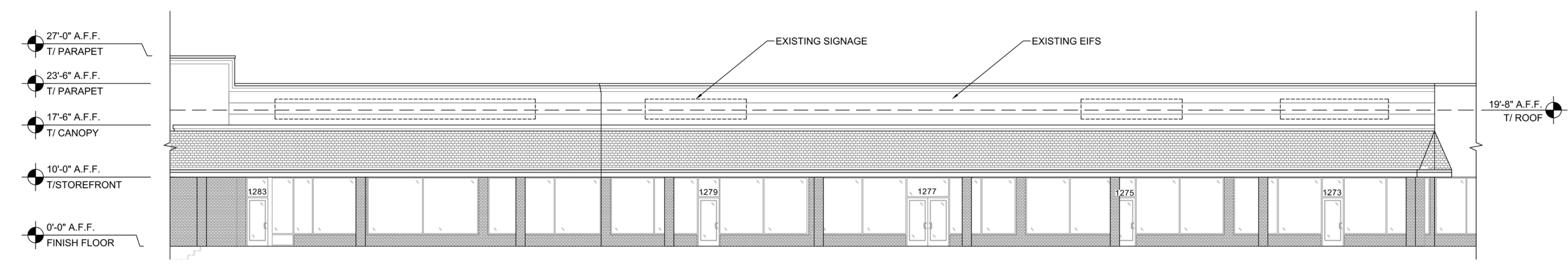
PERCENTAGE OF MATERIALS

- MASONRY = 16%
- STOREFRONT = 32%
- ALUMINUM = 4%
- EIFS = 48%

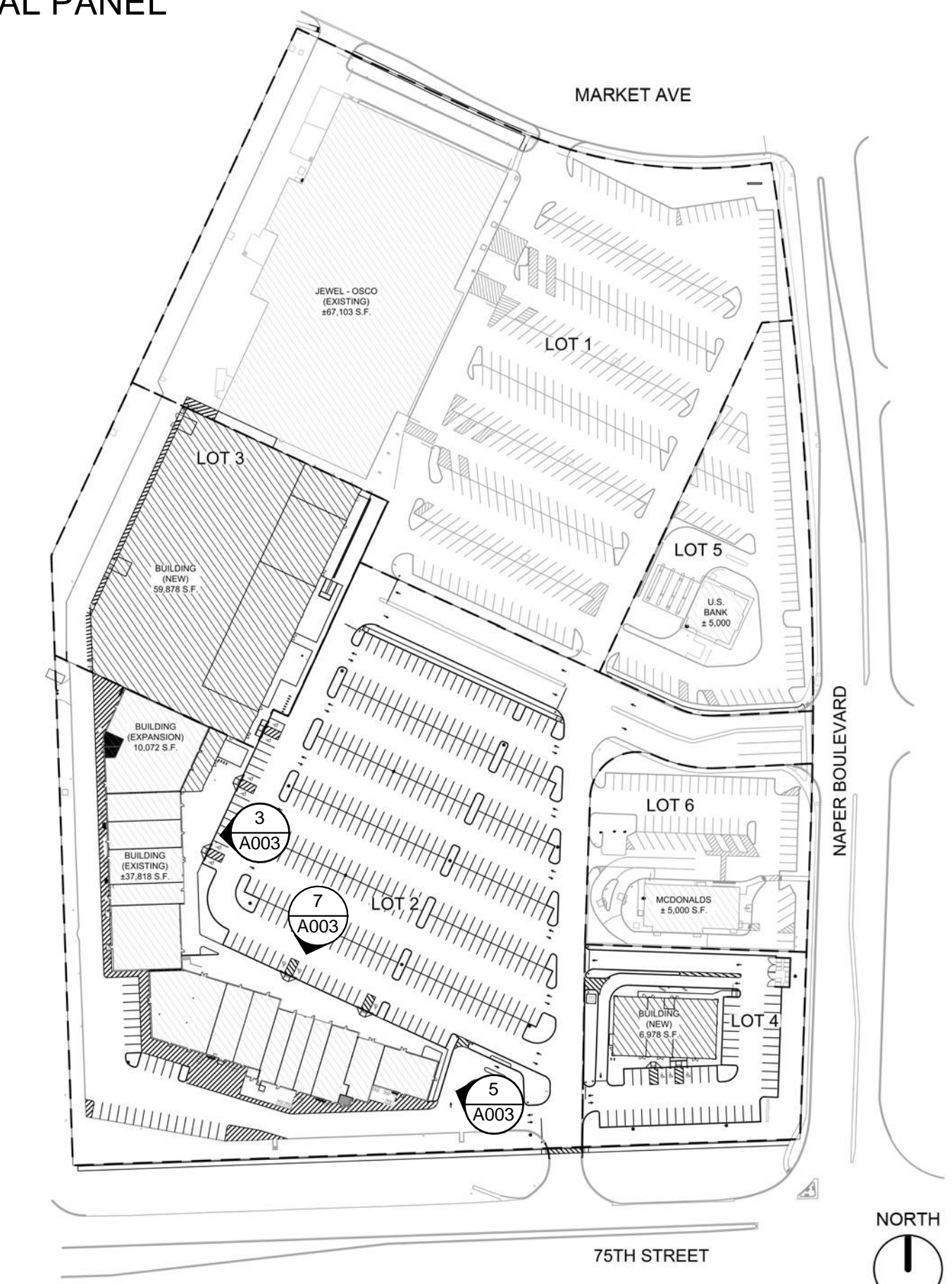
NOTE: NO WORK ON REAR OF THE BUILDING. EXISTING ELEVATIONS TO REMAIN.



3 PROPOSED FACADE RENOVATION WEST ELEVATION
3/32" = 1'-0"



2 EXISTING WEST ELEVATION
3/32" = 1'-0"



1 DEVELOPMENT KEY PLAN - A003
NTS

SHOREWOOD
DEVELOPMENT GROUP
MARKET MEADOWS
1265 - 1309 S NAPER BLVD
NAPERVILLE, IL 60540

PROJECT NO: 2020.0690
DATE: 11.16.20

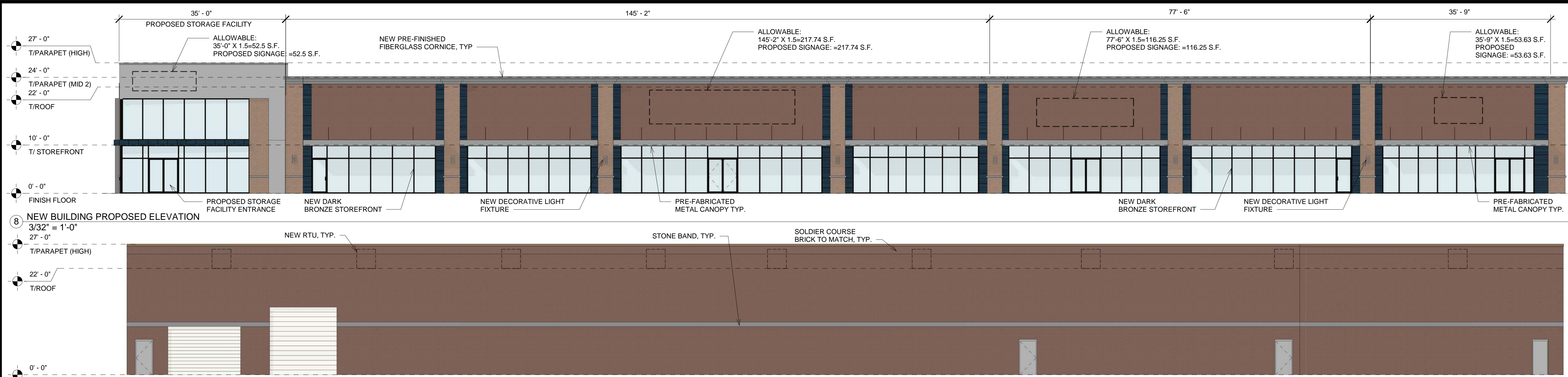
A003
EXISTING & PROPOSED
DEVELOPMENT ELEVATIONS

CHECKED: BP DRAWN: DC

COPYRIGHT © 2020 INTERPLAN, LLC. ALL RIGHTS RESERVED. THIS DOCUMENT IS THE ORIGINAL SET OR PARTS THEREOF. REPRODUCTION, CHANGES OR ASSIGNMENT ARE PROHIBITED.

SEAL:

**THIS DOCUMENT IS NOT
FOR REGULATORY
APPROVAL,
PERMITTING,
OR CONSTRUCTION.**



PERCENTAGE OF MATERIALS

MASONRY	= 40%
STOREFRONT	= 36%
STONE	= 9%
ALUMINUM	= 8%
EIFS	= 7%

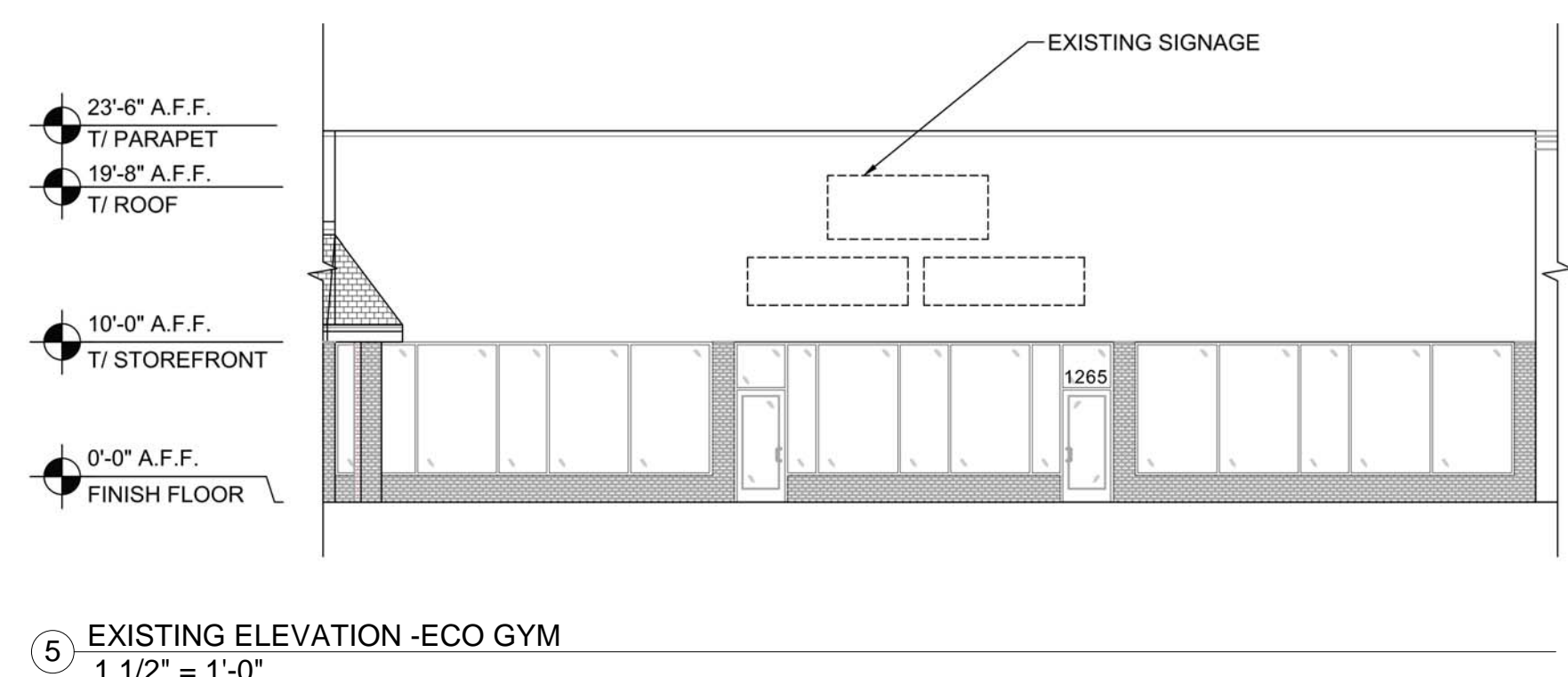
PERCENTAGE OF MATERIALS

MASONRY	= 100%
STOREFRONT	= 0%
EIFS	= 0%



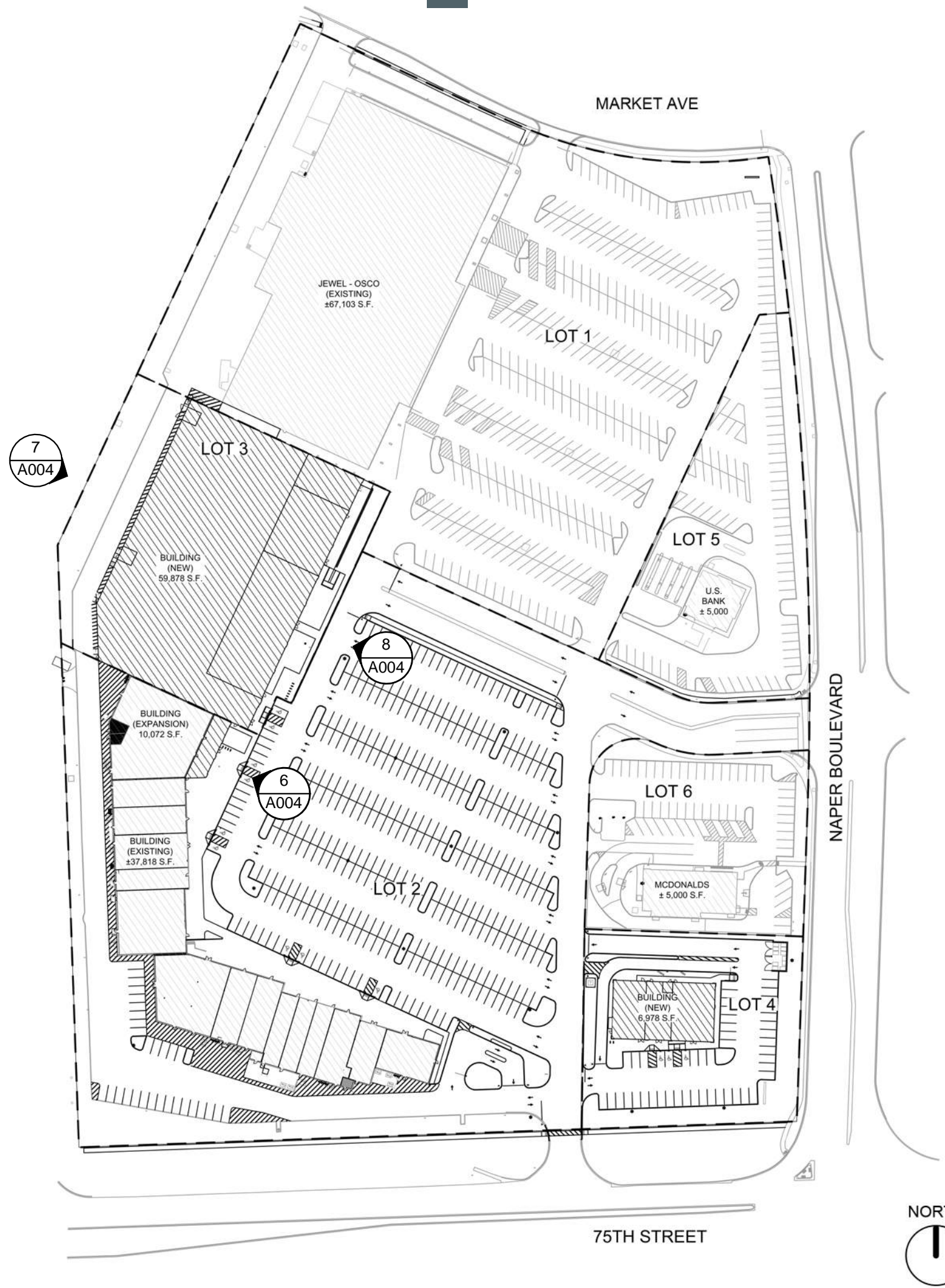
PERCENTAGE OF MATERIALS

MASONRY	= 37%
STOREFRONT	= 38%
EIFS	= 25%



MATERIALS LEGEND

- STACKED STONE PAGOSA PROF NATIONWIDE
- NEW BRICK TO MATCH EXISTING
- PRE-FINISHED FIBERGLASS CORNICE
- EIFS - PAINT BENJAMIN MOORE "RAINSTORM"
- ALUMINUM COMPOSITE MATERIAL (ACM) ARCHITECTURAL PANEL



4 PROPOSED RENDERING 3
NTS

3 PROPOSED RENDERING 2
NTS

1 DEVELOPMENT KEY PLAN - A004
NTS



2 PROPOSED RENDERING 1
NTS

REVISIONS

2	11.16.20	REVISION 2
1	10.16.20	REVISION 1
NO	DATE	REMARKS

SHOREWOOD
DEVELOPMENT GROUP
MARKET MEADOWS
1265 - 1309 S NAPER BLVD
NAPERVILLE, IL 60540

PROJECT NO: 2020.0690
DATE: 11.16.20

A004
PROPOSED ELEVATIONS

CHECKED: BP DRAWN: DC

COPYRIGHT © 2020 INTERPLAN LLC. ALL RIGHTS RESERVED. THESE DOCUMENTS TO THE ORIGINAL SITE OR PARCELS FOR WHICH THEY WERE PREPARED. REPRODUCTION, CHANGES OR ASSIGNMENT ARE PROHIBITED.

SEAL:

**THIS DOCUMENT IS NOT
FOR REGULATORY
APPROVAL,
PERMITTING,
OR CONSTRUCTION.**



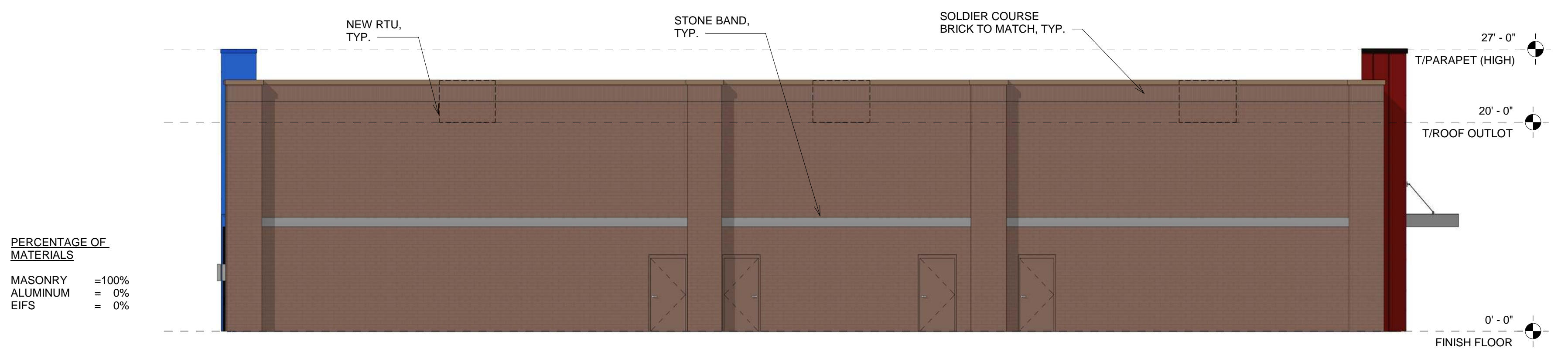
PERCENTAGE OF MATERIALS
MASONRY = 55%
ALUMINUM = 20%
EIFS = 25%

⑦ OUTLOT BUILDING SOUTH ELEVATION
1/8" = 1'-0"



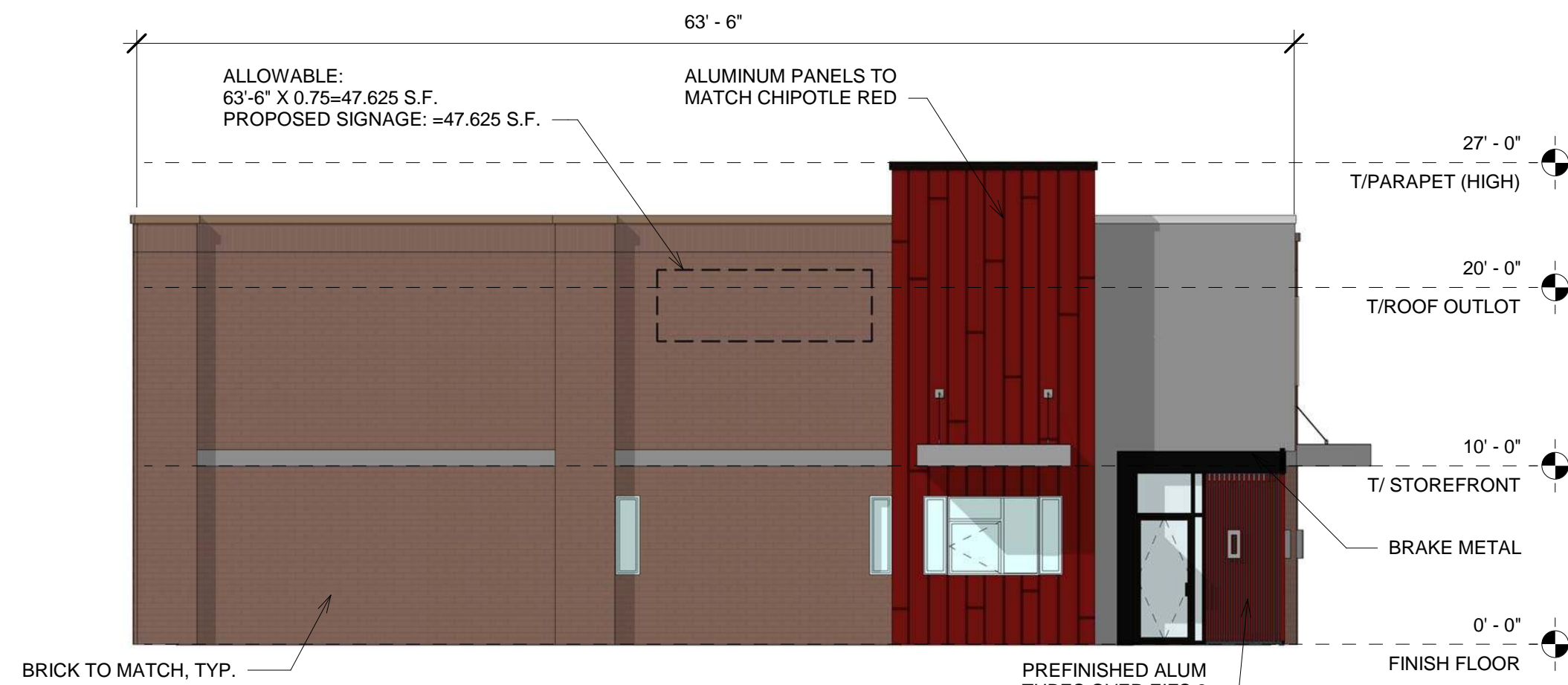
PERCENTAGE OF MATERIALS
MASONRY = 72%
ALUMINUM = 28%
EIFS = 0%

⑥ OUTLOT BUILDING EAST ELEVATION
1/8" = 1'-0"



PERCENTAGE OF MATERIALS
MASONRY = 100%
ALUMINUM = 0%
EIFS = 0%

⑤ OUTLOT BUILDING NORTH ELEVATION
1/8" = 1'-0"



PERCENTAGE OF MATERIALS
MASONRY = 68%
ALUMINUM = 22%
EIFS = 10%

④ OUTLOT BUILDING WEST ELEVATION
1/8" = 1'-0"



③ PROPOSED OUTLOT RENDERING 1
NTS



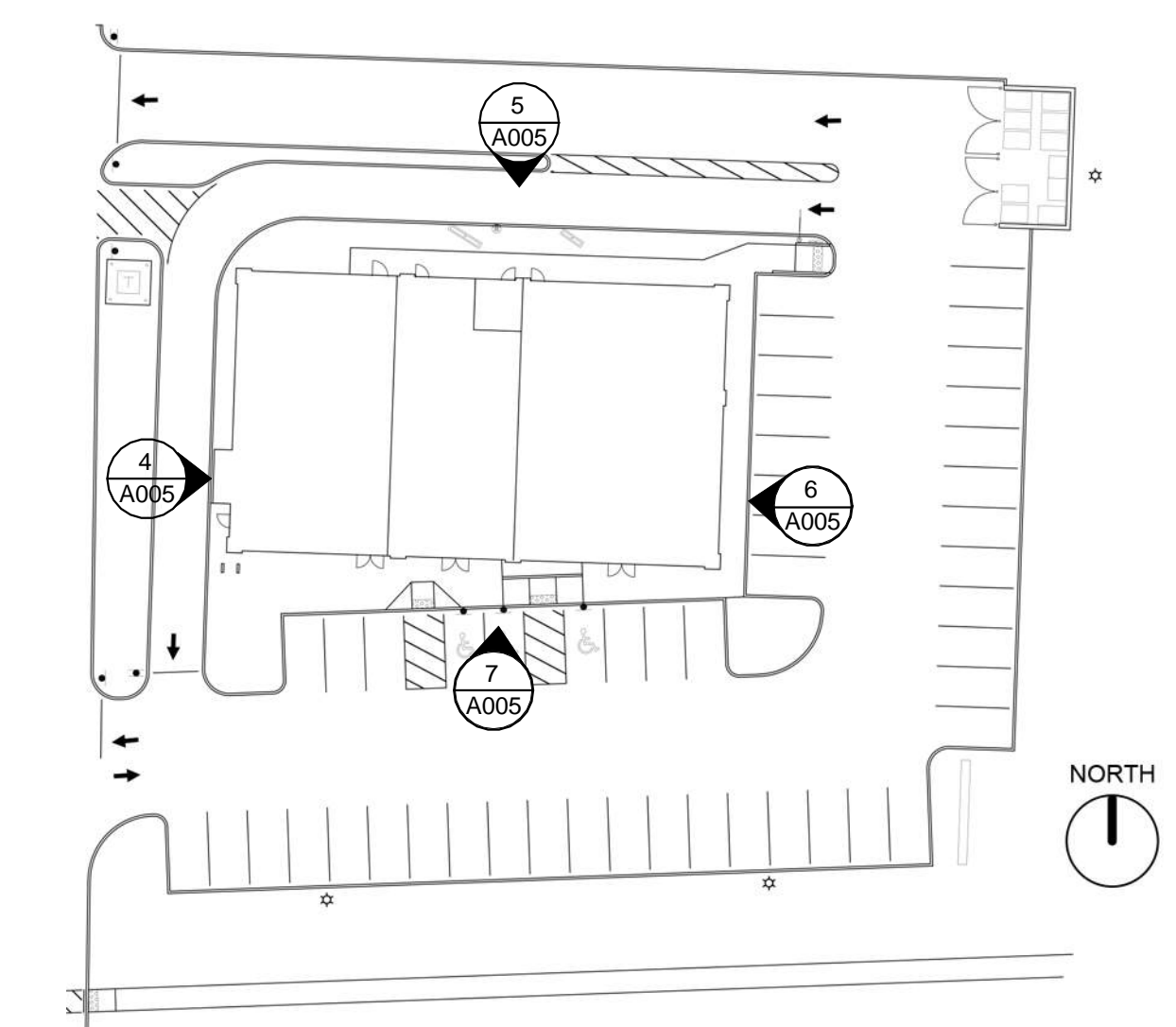
② PROPOSED OUTLOT RENDERING 2
NTS

MATERIALS LEGEND

- NEW BRICK TO MATCH EXISTING
- EIFS 1 - PAINT BENJAMIN MOORE "RAINSTORM"
- EIFS 2 - COLOR MATCH BENJAMIN MOORE "NIGHTFALL"
- PRE-FINISHED FIBERGLASS CORNICE
- ALUMINUM COMPOSITE MATERIAL (ACM) ARCHITECTURAL PANEL - TO MATCH CHIPOTLE
- ALUMINUM COMPOSITE MATERIAL (ACM) ARCHITECTURAL PANEL

**OVERALL BUILDING
PERCENTAGE OF MATERIALS**

- MASONRY = 77%
- ALUMINUM = 15%
- EIFS = 8%



① OUTLOT KEY PLAN - A-005
NTS

NO	DATE	REVISIONS	REMARKS
2	11.16.20	REVISION 2	
1	10.16.20	REVISION 1	

SHOREWOOD
DEVELOPMENT GROUP
MARKET MEADOWS
1265 - 1309 S NAPER BLVD
NAPERVILLE, IL 60540

PROJECT NO: 2020.0690
DATE: 11.16.20

A005
PROPOSED OUTLOT

CHECKED: BP DRAWN: DC

COPYRIGHT © 2020 INTERPLAN, LLC. RESERVES COPYRIGHT & OTHER RIGHTS RESPECTING THESE DOCUMENTS TO THE ORIGINAL SITE OR PURPOSE FOR WHICH THEY WERE PREPARED. REPRODUCTIONS, CHANGES OR MISUSE ARE PROHIBITED.