



Land Planning
Landscape Architecture
Environmental Site Design

04 WISCONSIN ST., NAPERVILLE, IL 60563 - (630) 293-2800 Fax 630.293.0794

project:

ASHWOOD HEIGHTS

Naperville, Illinois

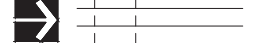
sheet description:

Landscape Plan North Half

Pulte Homes
1901 N. Roselle Road
Schaumburg, IL 60195



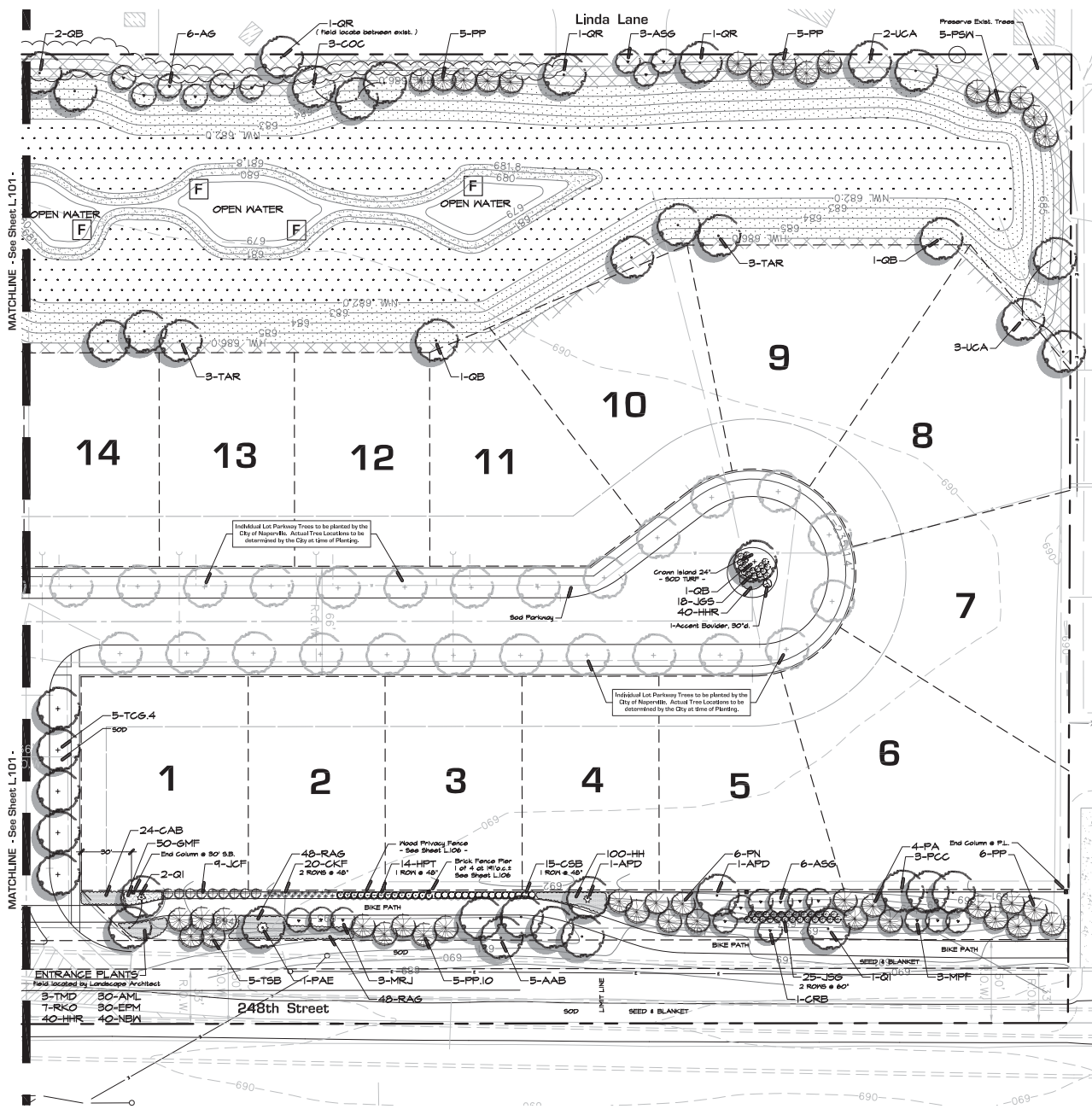
scale: 1" = 30' 0"



revisions:	8.5.2014	Per City Review Comments dated 8.5.2014
original issue date:	8.15.2014	Per City Review Comments dated 8.11.2014

original issue date: 18 July 2014
drawn by:
checked by:
project no.: 24027
sheet no.:

L100



STORMWATER BASINS LEGEND :

	Low Maintenance Turfgrass Fescue Mix B	28,600 sf
	Wet to Mesic Prairie Seed Mix C	39,850 sf
	Wet Meadow Seed Mix D Plugs - Mix D	19,425 sf (SR9-SR1.9) 4,320 plugs (Full Bottom)
	Shallow Emergents Plugs - Mix E	840 plugs
	Deep Emergents Plugs / Tubers - Mix F	192 plugs
	Open Water - NO WORK	

NOTE: Above Unit Quantities are for the Full Basin
See Sheet L.104 for Seed and Plug Mixes

- For Parkway Tree / Utility Separation Requirements - See Construction Notes - Sheet L.102
- For Plant Material List - See Sheet L.103
- For Planting Details & Notes - See Sheet L.102
- For Landscape Specifications - See Sheet L.105

