



EXH C - Fence Variance Request Photo Exhibit

PROJECT: Costco Wholesale

**Odgen Avenue & Iroquois Avenue
Naperville, Illinois**

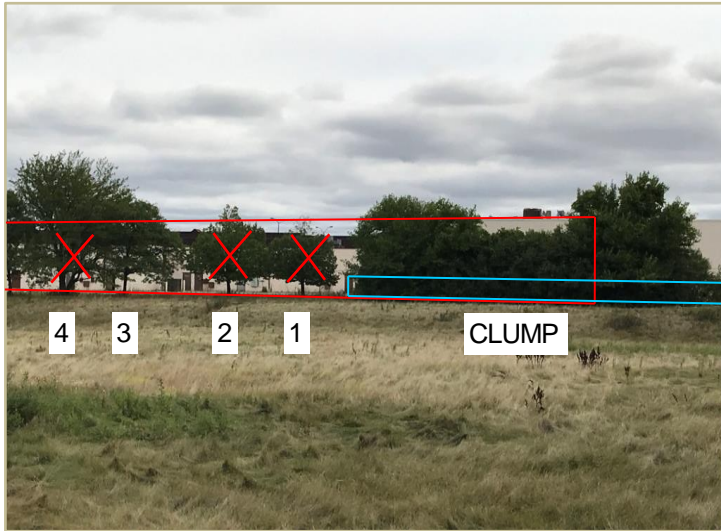


PHOTO 1

DESCRIPTION:

Red line indicates approximate Costco building west elevation. Blue line indicates approximate 6' fence limits.

Clump of trees and shrubs on the right to be removed. Trees 1, 3, and 4 to be removed, Tree 2 to remain. The gaps are to be filled with the planting of new trees.

Facing east from west of the western Costco property line.

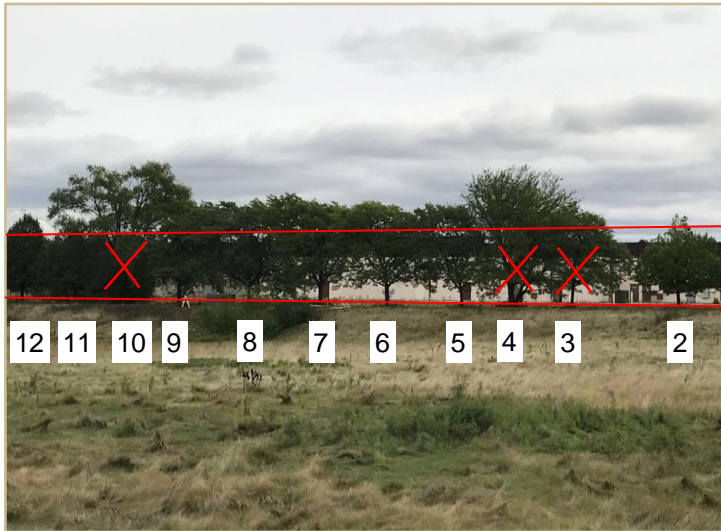


PHOTO 2

DESCRIPTION:

Red line indicates approximate Costco building west elevation.

Trees 3, 4, and 10 to be removed, the rest to remain. The gaps are to be filled with the planting of new trees.

Facing east from west of the western Costco property line.



PHOTO 3

DESCRIPTION:

Red line indicates approximate Costco building west elevation.

Tree 10 to be removed, the rest to remain. The gaps are to be filled with the planting of new trees.

Facing east from west of the western Costco property line.

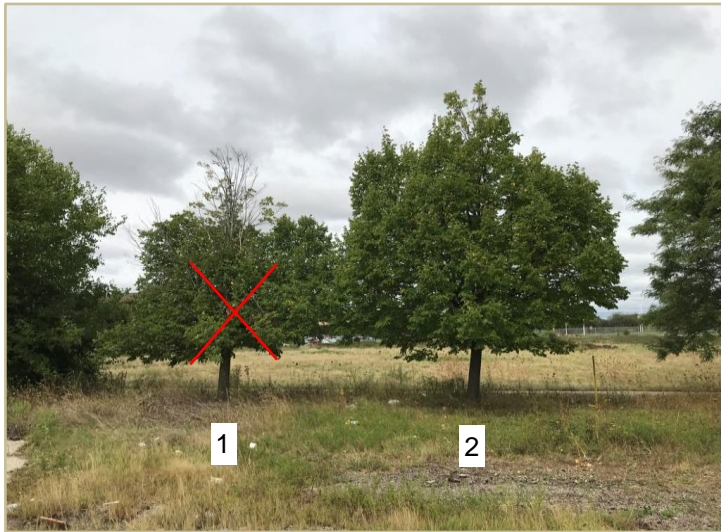


PHOTO 4

DESCRIPTION:

Tree 1 to be removed, Tree 2 to remain.

Facing west from east side of western Costco property line.

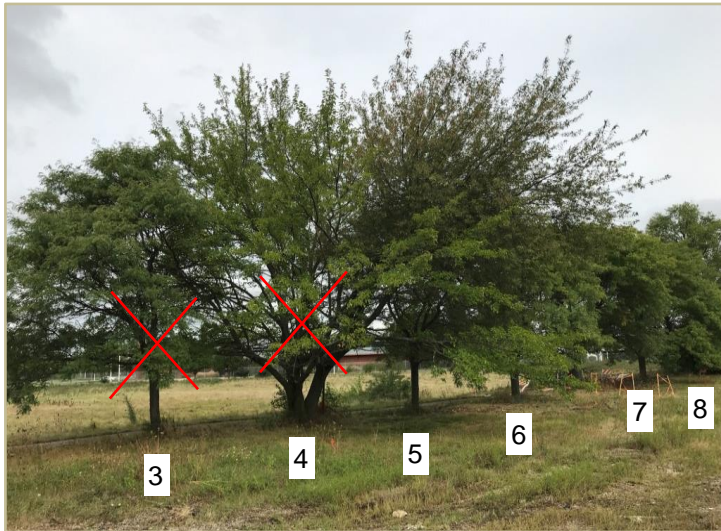


PHOTO 5

DESCRIPTION:

Trees 3 and 4 to be removed, the rest to remain.

Facing northwest from east side of western Costco property line.



PHOTO 6

DESCRIPTION:

Tree 4 to be removed, Tree 5 to remain.

Facing south from the center of the western Costco property line.

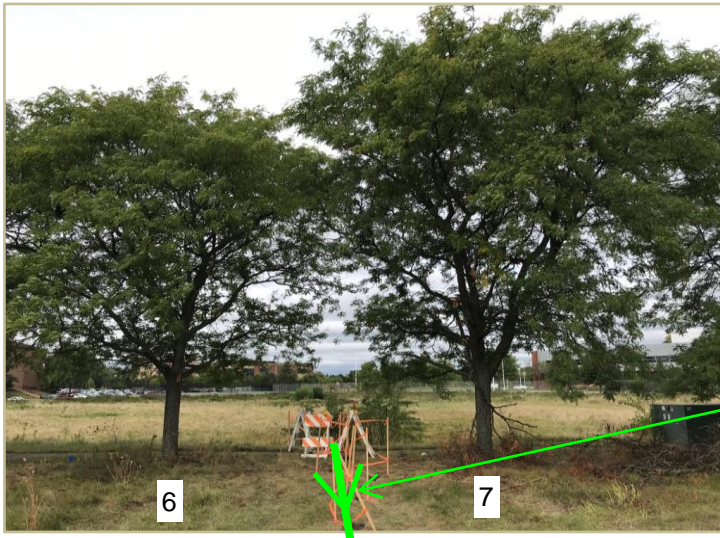


PHOTO 7

DESCRIPTION:

Both trees to remain.

Facing west from east side of western Costco property line.

Approximate location of Costco replacement storm sewer to be installed between existing trees to remain



PHOTO 8

DESCRIPTION:

Trees 1, 3, and 4 to be removed, the rest to remain.

Facing southwest from east side of western Costco property line.

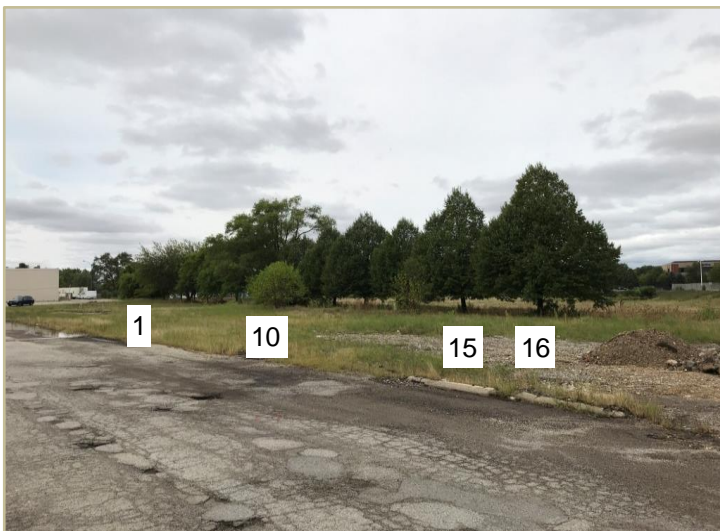


PHOTO 9

DESCRIPTION:

Trees 1, 3, 4, and 10 to be removed, the rest to remain.

Facing southwest from east side of western Costco property line.



PHOTO 10

DESCRIPTION:

Trees 1, 3, 4, and 10 to be removed, the rest to remain.

Facing south from west side of western Costco property line.



PHOTO 11

DESCRIPTION:

Tree 17 to remain.

Facing north from just north of Tree 16 on the western Costco property line.



PHOTO 12

DESCRIPTION:

Both trees to remain.

Facing east from west side of western Costco property line.

END OF REPORT