

457 EXISTING PARKING SPACES
 56 NEW PARKING SPACES
 14 NEW ADA PARKING SPACES
 527 TOTAL PROVIDED PARKING SPACES
 REQ HC SPACES 2% = 11 SPACES
 PROVIDED 14 HC SPACES

460 EXISTING PARKING SPACES
 17 EXISTING ADA PARKING SPACES
 477 TOTAL EXIST'G PARKING SPACES
 3 EXISTING PARKING SPACES TO BE REMOVED
 17 EXISTING ADA PARKING SPACES TO BE REMOVED
EXISTING PARKING TO REMAIN 457 SPACES

ac
architects
 4610 Main Street | Naperville, Illinois 60563
 office 647-829-0851 | fax 647-763-8700
 info@acarchitects.net | www.acarchitects.net

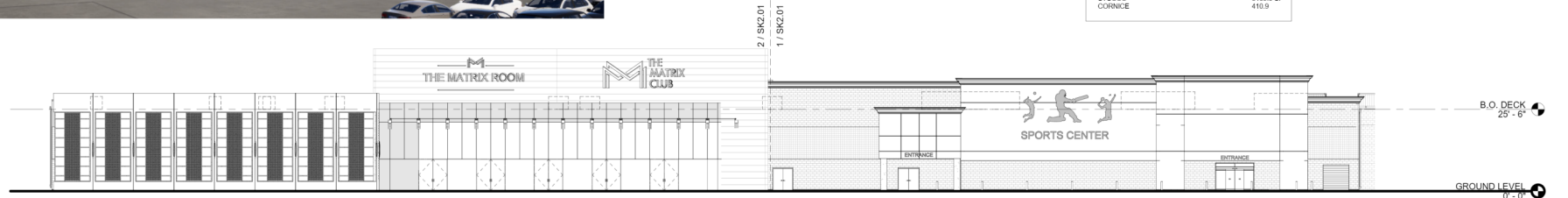
SITE PLAN_12 15 2020

SK1.00

address: 808 S. RTE 59, SUITE #100
 NAPERVILLE, IL 60540
 project: 1005 date: 06/16/2020
 drawn: BY RA JZ



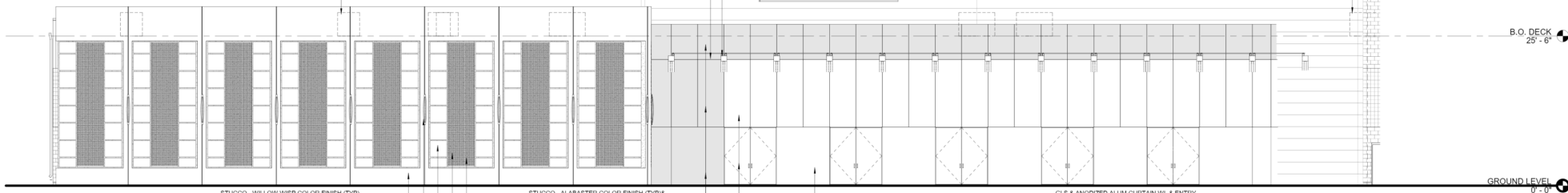
NORTHERN PORTION OF WEST FACADE	
STUCCO	1148.1 SF
MTL GRILL PANEL	775.01 SF
TRESPA PANEL COLOR 1	1137.8 SF
CURTAIN WL W/ SPANDREL GLS	907.9 SF
CURTAIN WL & GRIS/ W/ CLEAR GLS	2023.4 SF
TRESPA PANEL COLOR(S) 2/3	2462.9 SF
SOUTHERN PORTION OF WEST FACADE	
CMU	2529.3 SF
GLS ENTRY	105.9 SF
MTL DR(S)	70 SF
STUCCO	3169.6 SF
CORNICE	410.9



3 PROPOSED WEST ELEVATION - OVERALL
1/16" = 1'-0"

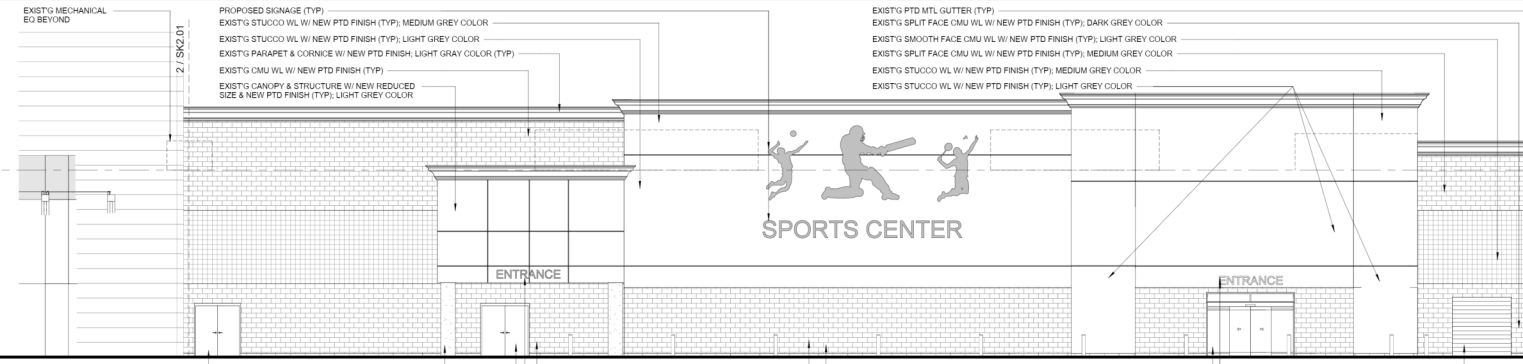
PROPOSED PANEL PARAPET WL / WL - ALTERNATING ROWS OF TRESPA LONDON GRAY OBLIQUE & TEMPERED GRAY MATT
 PROPOSED SIGNAGE - BURGUNDY & GOLD LETTERING
 PROPOSED ANODIZED ALUM CLAD CANOPY SUPPORT WITH RECESSED LED LT FIXT (TYP)
 PROPOSED GLS CANOPY (TYP)

RTU BEYOND (TYP)



2 PROPOSED WEST ELEVATION - NORTHERN PORTION
1/8" = 1'-0"

STUCCO - WILLOW WISP COLOR FINISH (TYP)
 PROPOSED LED SCONCE LIGHT FIXTURE STAINLESS STEEL FINISH(TYP)
 PROPOSED PANEL - TRESPA METEOR EAST RED SATIN (TYP)
 STUCCO - ALABASTER COLOR FINISH (TYP)& PERFORATED STAINLESS STEEL SCREEN (TYP)
 PROPOSED PERFORATED STAINLESS STEEL SCREEN (TYP) W/ BACKLIGHTING (TYP)
 GLS & ANODIZED ALUM CURTAIN WL & ENTRY
 CLEAR GLASS (NO FILM)
 3M FILM FINISH ON GLASS - FEATHER GRADIENT SXJ-0547



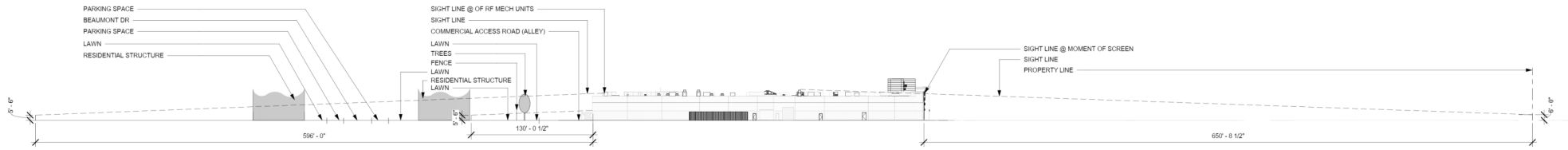
1 PROPOSED EAST ELEVATION - SOUTHERN PORTION
1/8" = 1'-0"

EXIST'G MECHANICAL EQ BEYOND
 PROPOSED SIGNAGE (TYP)
 EXIST'G STUCCO WL W/ NEW PTD FINISH (TYP); MEDIUM GREY COLOR
 EXIST'G STUCCO WL W/ NEW PTD FINISH (TYP); LIGHT GREY COLOR
 EXIST'G PARAPET & CORNICE W/ NEW PTD FINISH; LIGHT GRAY COLOR (TYP)
 EXIST'G CMU WL W/ NEW PTD FINISH (TYP)
 EXIST'G CANOPY & STRUCTURE W/ NEW REDUCED SIZE & NEW PTD FINISH (TYP); LIGHT GREY COLOR
 EXIST'G COLUMN W/ NEW PTD FINISH (TYP); MEDIUM GREY COLOR
 EXIST'G PTD MTL DR (TYP) W/ NEW PTD FINISH TO MATCH CMU WL COLOR
 PROPOSED SIGNAGE (TYP)
 EXIST'G SMOOTH FACE CMU WL W/ NEW PTD FINISH; DARK GRAY COLOR (TYP)
 EXIST'G BOLLARD (TYP)
 EXIST'G PTD MTL GUTTER (TYP)
 EXIST'G SPLIT FACE CMU WL W/ NEW PTD FINISH (TYP); DARK GREY COLOR
 EXIST'G SMOOTH FACE CMU WL W/ NEW PTD FINISH (TYP); LIGHT GREY COLOR
 EXIST'G SPLIT FACE CMU WL W/ NEW PTD FINISH (TYP); MEDIUM GREY COLOR
 EXIST'G STUCCO WL W/ NEW PTD FINISH (TYP); MEDIUM GREY COLOR
 EXIST'G STUCCO WL W/ NEW PTD FINISH (TYP); LIGHT GREY COLOR
 EXIST'G ALUM & GLS SLIDING DR ENTRY W/ TRANSOM
 PROPOSED SIGNAGE (TYP)
 EXIST'G PTD MTL OVERHEAD DR W/ NEW PTD FINISH TO MATCH CMU WL COLOR

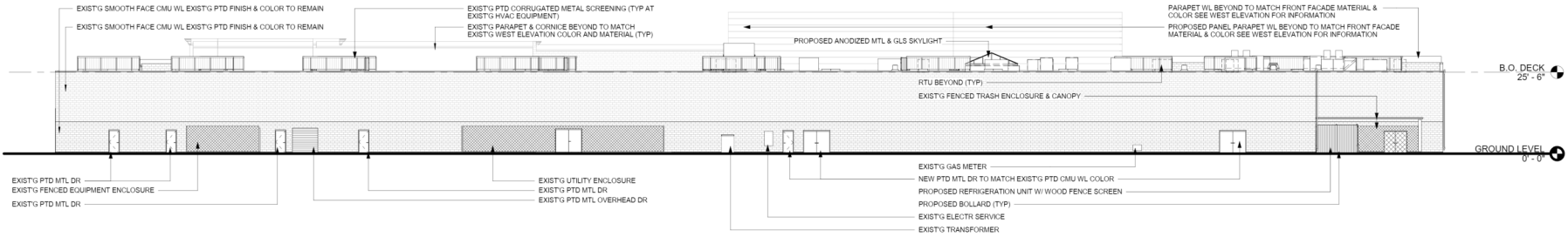
ac architects
 4840 main street | naperville, illinois 60563
 office 647 829 0801 | fax 647 763 8700
 info@acarchitects.net | www.acarchitects.net

EAST BLDG ELEVATIONS, 12 15 2020
SK2.01

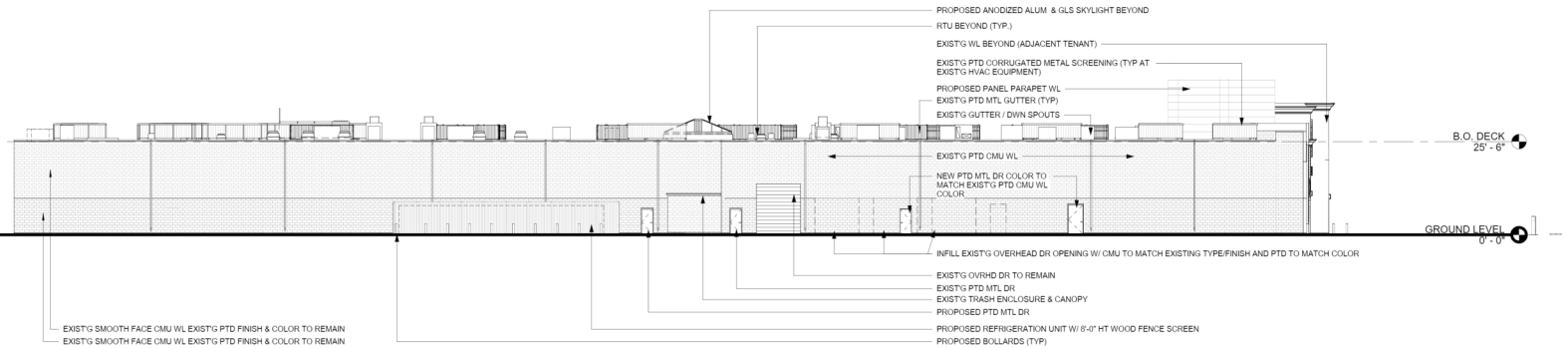
address: 800 S. RTE 59, SUITE #100
 NAPERVILLE, IL 60540
 project: 1005 date: 06/16/2020
 drawn: RA BY



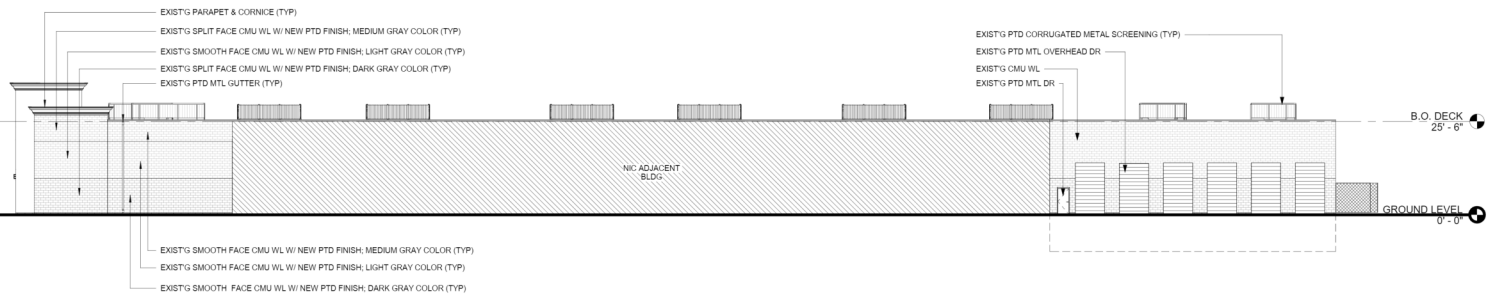
4 DIAGRAM SIGHT LINES @ PROPERTY LINE TO ROOFTOP ENCLOSURES
1" = 50'-0"



3 EXIST'G EAST ELEVATION
1/16" = 1'-0"



2 EXIST'G NORTH ELEVATION
1/16" = 1'-0"



1 EXIST'G SOUTH ELEVATION
1/16" = 1'-0"

ac
architects

4840 Main Street, Naperville, Illinois 60563
Office 647-629-0881 | Fax 647-763-8766
info@acarchitects.net | www.acarchitects.net

N.E.S BLDG ELEVATIONS, 12 15 2020
SK2.02

address: 808 S. RTE 59, SUITE #100
NAPERVILLE, IL 60540
project: 1005 date: 06/16/2020
drawn: BY RA