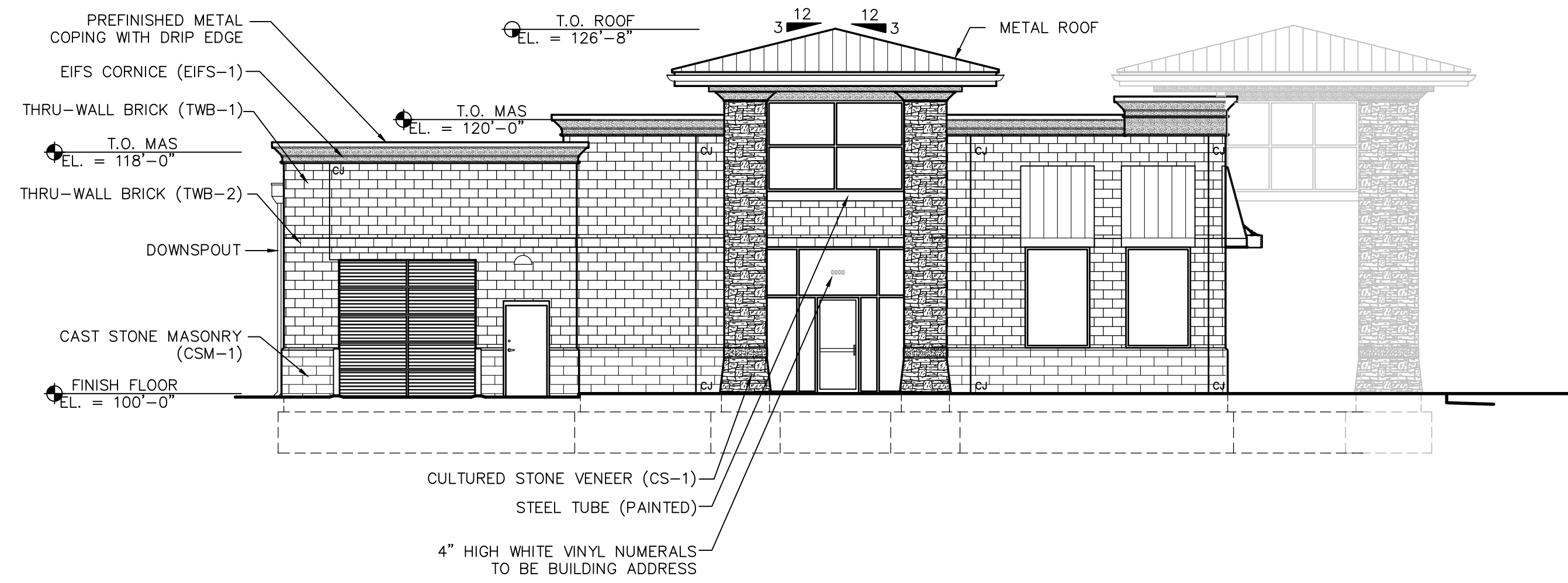
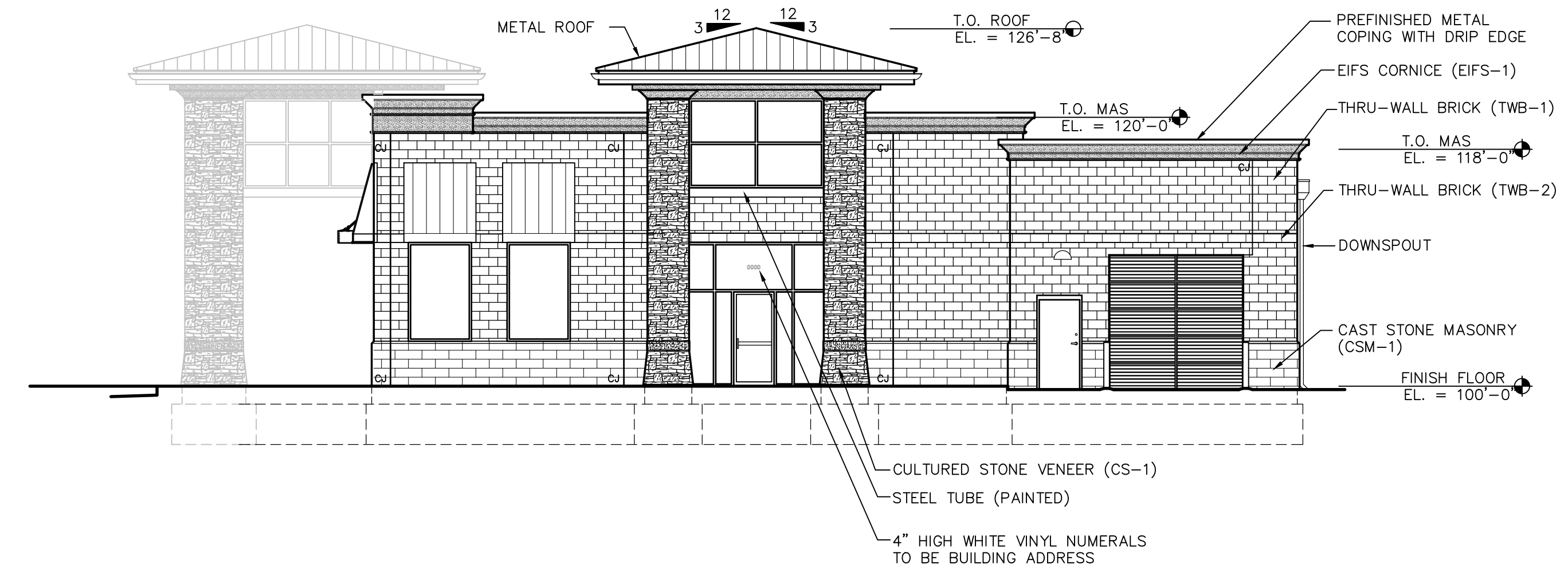


FRONT BUILDING ELEVATION
SCALE: 1/8" = 1'-0"

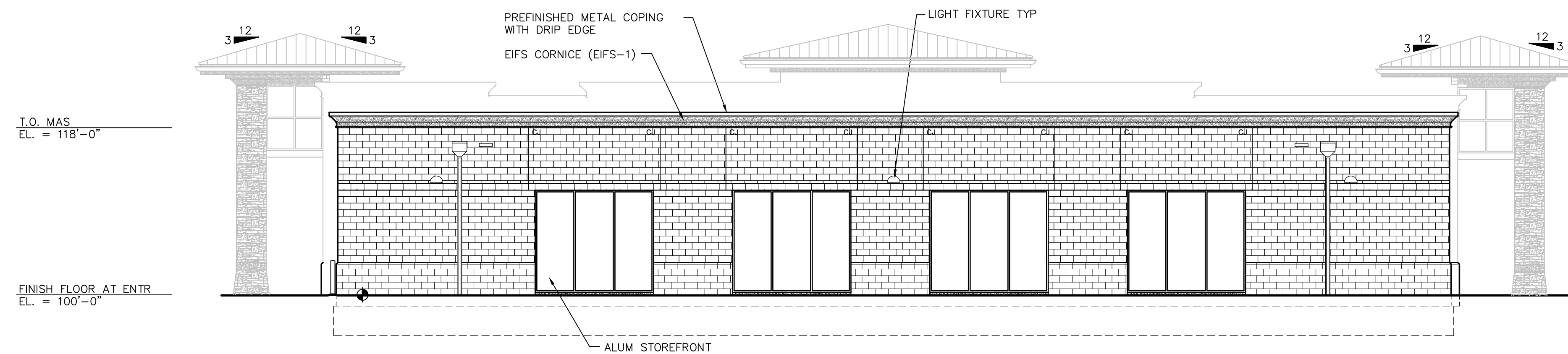


SIDE BUILDING ELEVATION
SCALE: 1/8" = 1'-0"



SIDE BUILDING ELEVATION
SCALE: 1/8" = 1'-0"

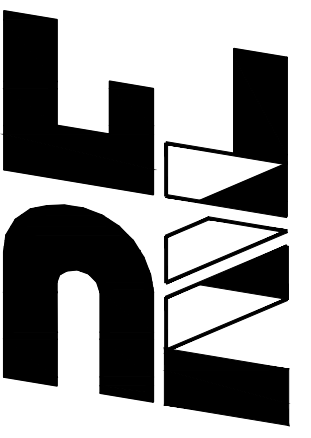
MATERIAL & COLOR LEGEND		
MARK	MATERIAL	STYLE / SIZE / COLOR
-	STANDING SEAM METAL	COPPER COAT
CMU-1	CONCRETE MASONRY, 8x4x16	TERRA COTTA
CMU-2	CONCRETE MASONRY, 8x8x16	PUTTY



REAR BUILDING ELEVATION
SCALE: 1/8" = 1'-0"

BUCKY'S
NAPERVILLE, ILLINOIS

ROBERT W. ENGEL AND
ASSOCIATES, ARCHITECTS
2443 South 156th Circle
Omaha, NE 68130-2512
(402) 330-8287 Fax: (402) 330-8331
email:RWEArchitects@RWEArchitects.com

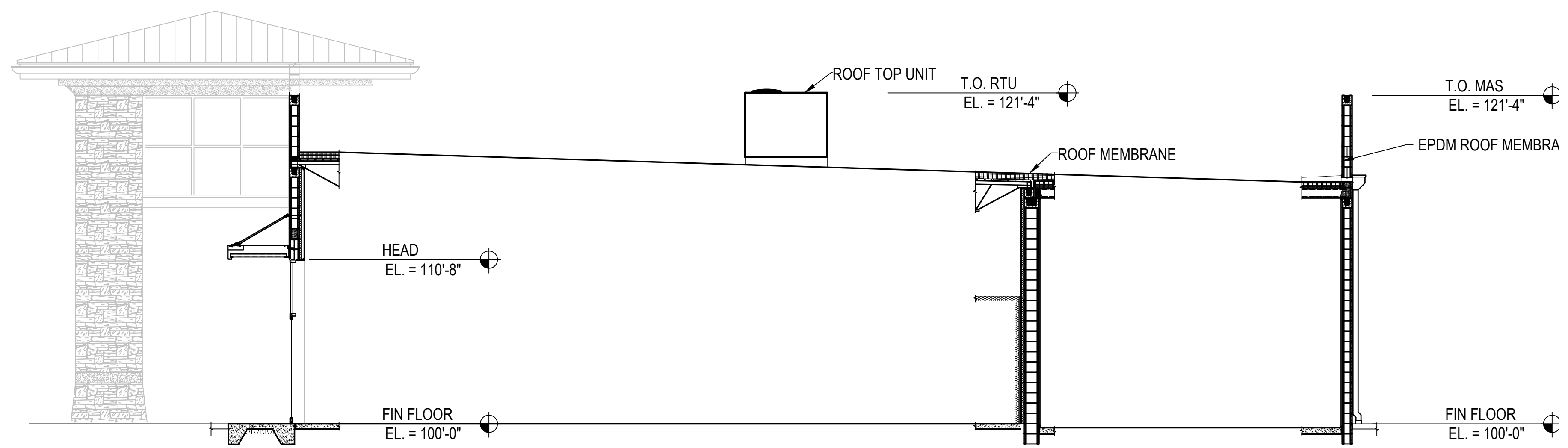


Issue Date: January 18, 2019

Revisions to the drawing set

No.	Date	No.	Date
△	01/18/19		

Project Number: ###
Drawn by: GS
Checked by: RWE
Sheet Name:

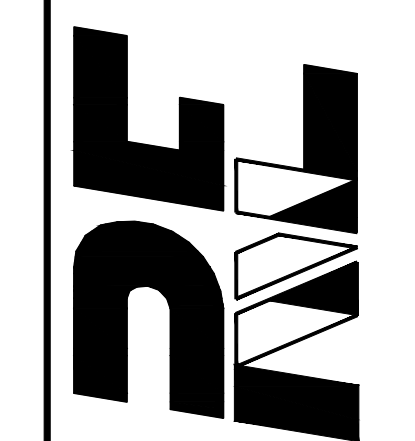


BUILDING SECTION

SCALE: 3/16" = 1'-0"

BUCKY'S
NAPERVILLE, ILLINOIS

ROBERT W. ENGEL AND ASSOCIATES, ARCHITECTS
 2443 South 156th Circle
 Omaha, NE 68130-2512
 (402) 330-8287 Fax: (402) 330-8331
 email: RWEArchitects@RWEArchitects.com

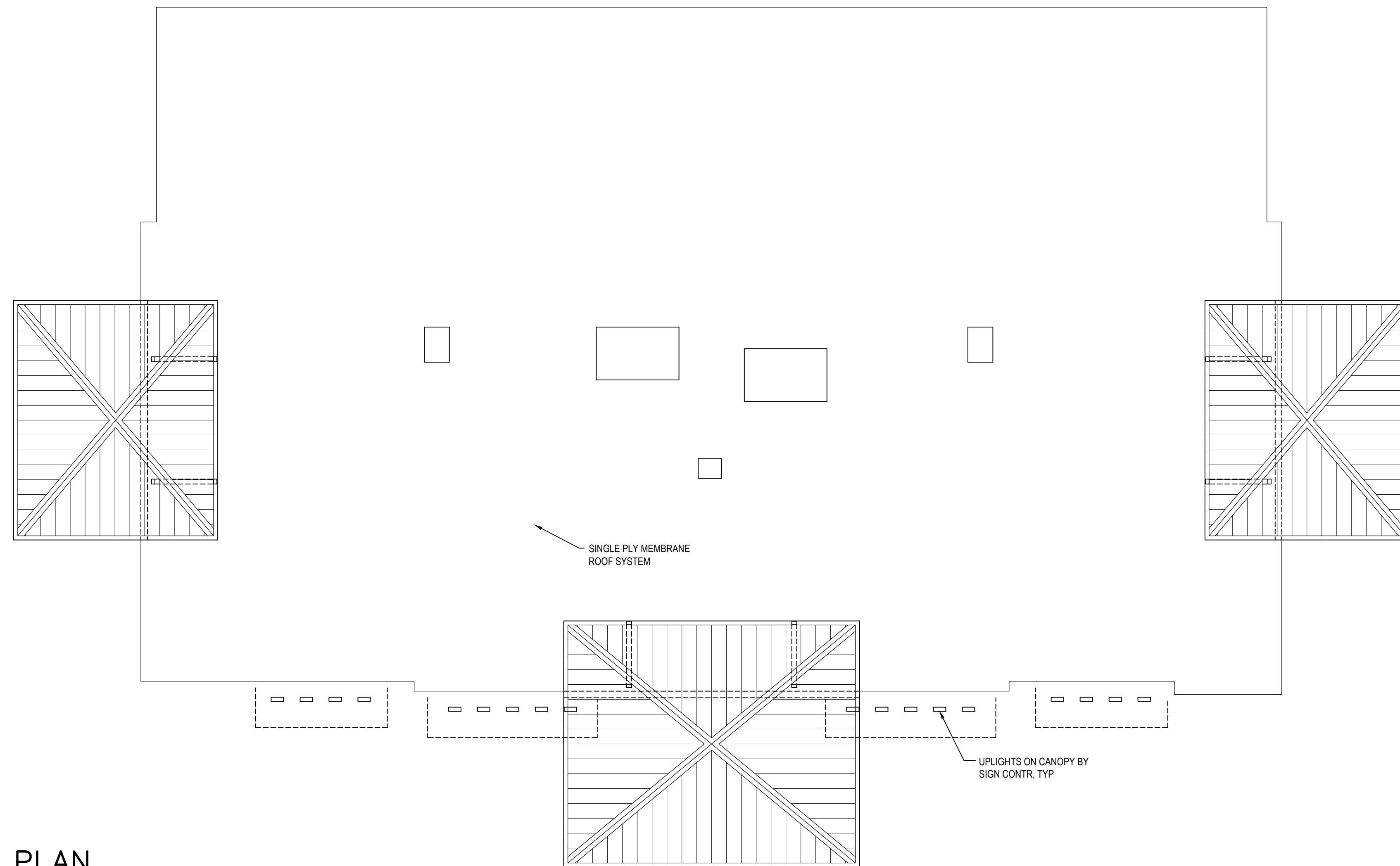


Issue Date: January 18, 2019

Revisions to the drawing set			
No.	Date	No.	Date
△	01/18/19		

Project Number: ###
 Drawn by: GS
 Checked by: RWE
 Sheet Name:

modified floor plan 5500.dwg | 1/18/2019 | 5:04 PM

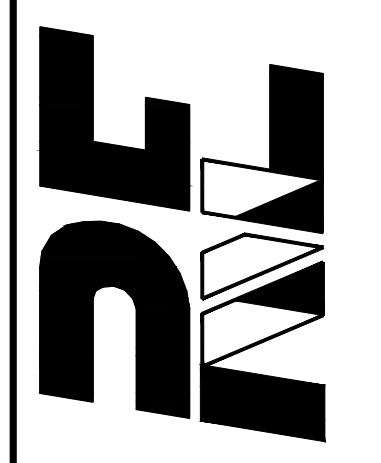


ROOF PLAN
SCALE: 1/8" = 1'-0"

modified floor plan 5500.dwg | 1/18/2019 | 5:04 PM

BUCKY'S
NAPERVILLE, ILLINOIS

ROBERT W. ENGEL AND ASSOCIATES, ARCHITECTS
2443 South 156th Circle
Omaha, NE 68130-2512
(402) 330-8287 Fax: (402) 330-8331
email:RWEArchitects@RWEArchitects.com



Issue Date: January 18, 2019

Revisions to the drawing set

No.	Date	No.	Date
△	01/18/19		

Project Number: ###
Drawn by: GS
Checked by: RWE
Sheet Name: