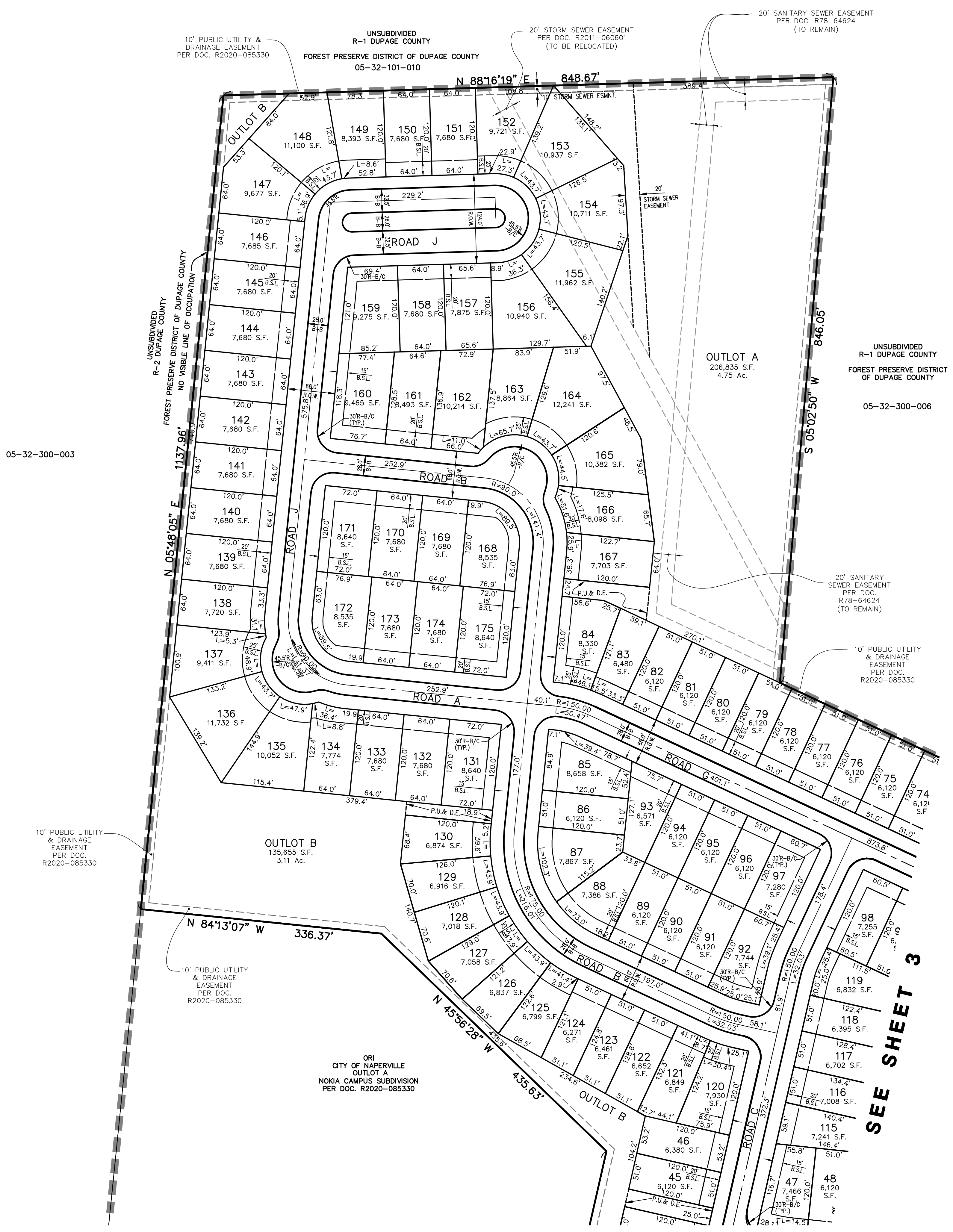




80 40 0 80
SCALE: 1" = 80'



05-32-300-003

10' PUBLIC UTILITY & DRAINAGE EASEMENT PER DOC. R2020-085330

UNSUBDIVIDED R-2 DUPAGE COUNTY FOREST PRESERVE DISTRICT OF DUPAGE COUNTY NO VISIBLE LINE OF OCCUPATION

UNSUBDIVIDED R-1 DUPAGE COUNTY FOREST PRESERVE DISTRICT OF DUPAGE COUNTY 05-32-101-010

20' SANITARY SEWER EASEMENT PER DOC. R78-64624 (TO REMAIN)

UNSUBDIVIDED R-1 DUPAGE COUNTY FOREST PRESERVE DISTRICT OF DUPAGE COUNTY 05-32-300-006

20' SANITARY SEWER EASEMENT PER DOC. R78-64624 (TO REMAIN)

10' PUBLIC UTILITY & DRAINAGE EASEMENT PER DOC. R2020-085330

N 84°13'07" W 336.37'

10' PUBLIC UTILITY & DRAINAGE EASEMENT PER DOC. R2020-085330

ORI CITY OF NAPERVILLE OUTLOT A NOKIA CAMPUS SUBDIVISION PER DOC. R2020-085330

N 45°56'28" W 435.63'

SEE SHEET 3

PLAT FILE CREATED: 11/17/2020 BY: LESLIE LUMBERG

PREPARED FOR:
PULTE HOME COMPANY, LLC
1900 E. GOLF ROAD, SUITE 300
SCHAUMBURG, IL 60173
(847) 230-5400



PREPARED BY:
CEMCON, Ltd.
Consulting Engineers, Land Surveyors & Planners
2280 White Oak Circle, Suite 100
Aurora, Illinois 60502-9675
PH: 630.862.2100 FAX: 630.862.2199
E-Mail: cadd@cemcon.com Website: www.cemcon.com

DISC NO.: 402138 FILE NAME: PREOVR
DRAWN BY: LAL FLD. BK. / PG. NO.: NOTES
COMPLETION DATE: 09-14-20 JOB NO.: 402.138
XREF : TOPO PROJECT MANAGER : CRM

10-16-20/LAL: REVISED PER 2020-10-05 CITY COMMENTS
11-18-20/LAL: REVISED PER 2020-11-03 CITY COMMENTS

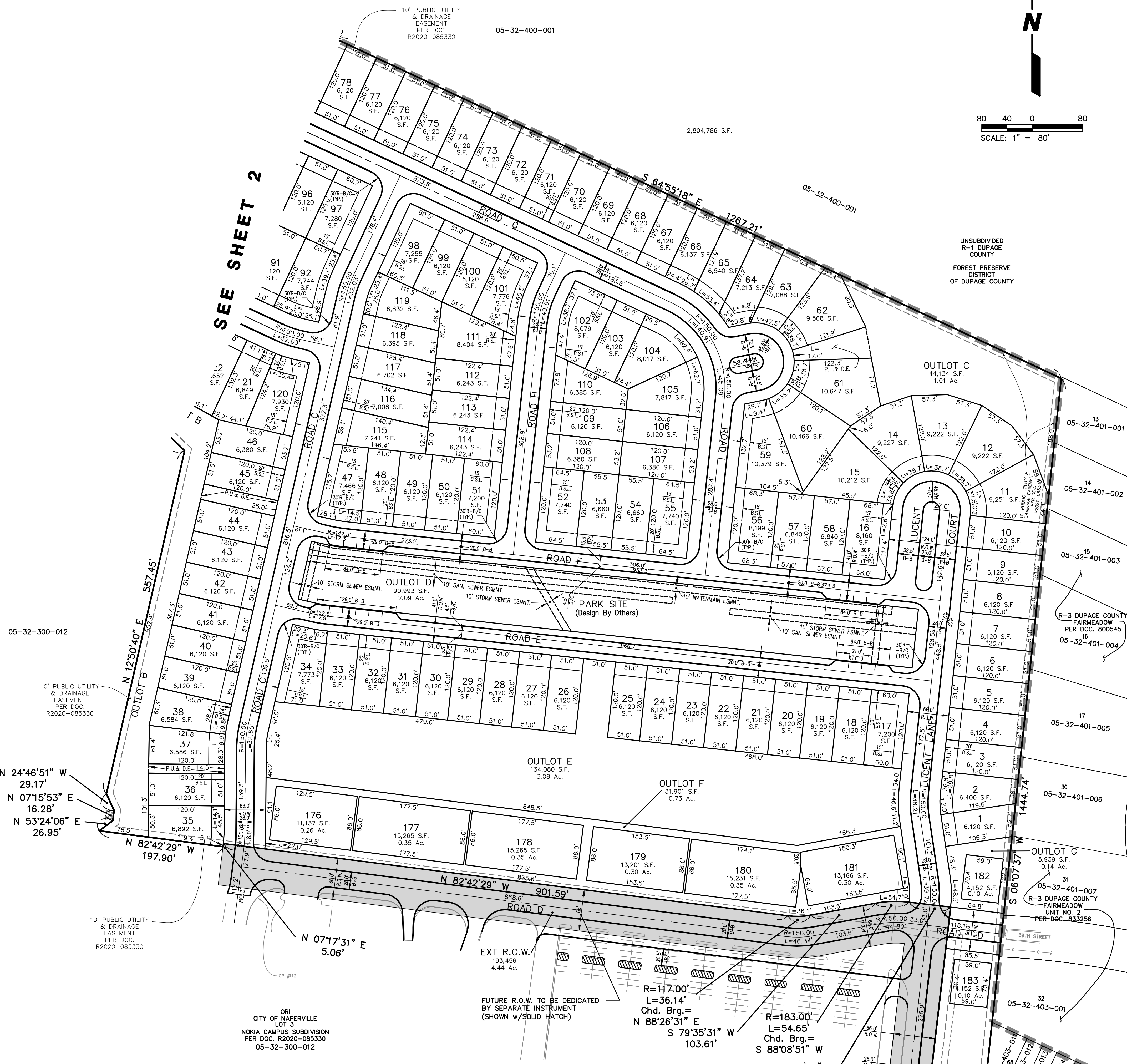
PRELIMINARY PLAT OF SUBDIVISION FOR NAPER COMMONS
CITY OF NAPERVILLE PROJECT NO. 20-1000088

SHEET 2 OF 4

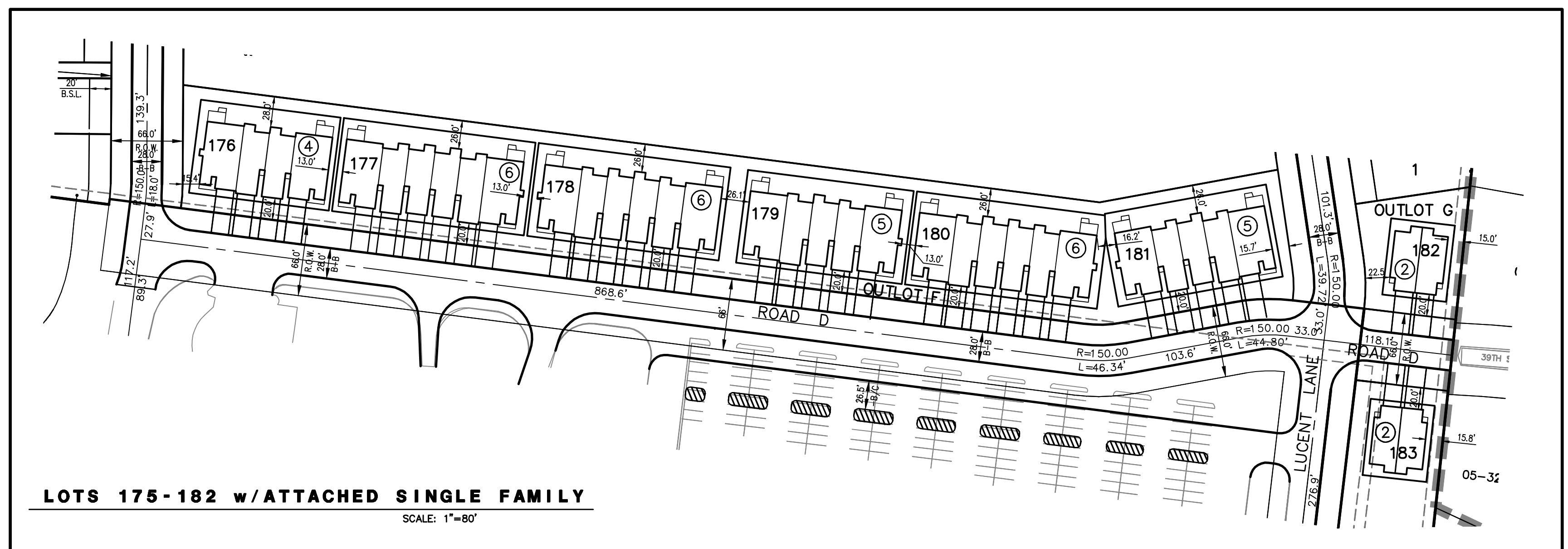
Copyright © 2020 Cemcon, Ltd. All rights reserved.



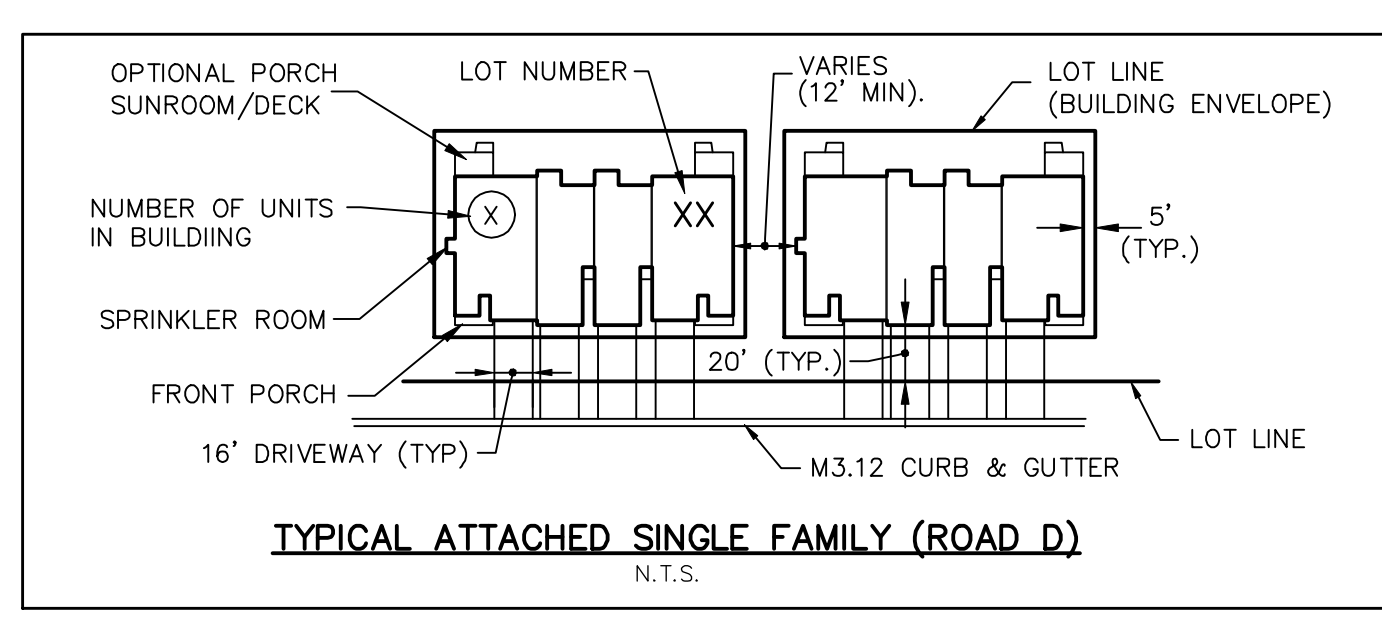
80 40 0 80
SCALE: 1" = 80'



SEE SHEET 4



LOTS 175-182 w/ ATTACHED SINGLE FAMILY
SCALE: 1"=80'



PREPARED FOR:
PULTE HOME COMPANY, LLC
1900 E. GOLF ROAD, SUITE 300
SCHAUMBURG, IL 60173
(847) 230-5400

PREPARED BY:
CEMCON, Ltd.
Consulting Engineers, Land Surveyors & Planners
2280 White Oak Circle, Suite 100
Aurora, Illinois 60502-9675
PH: 630.862.2100 FAX: 630.862.2199
E-Mail: cadd@cemcon.com Website: www.cemcon.com

DISC NO.: 402138 FILE NAME: PREOVR
DRAWN BY: LAL FLD. BK. / PG. NO.: NOTES
COMPLETION DATE: 09-14-20 JOB NO.: 402.138
XREF: TOPO PROJECT MANAGER: CRM

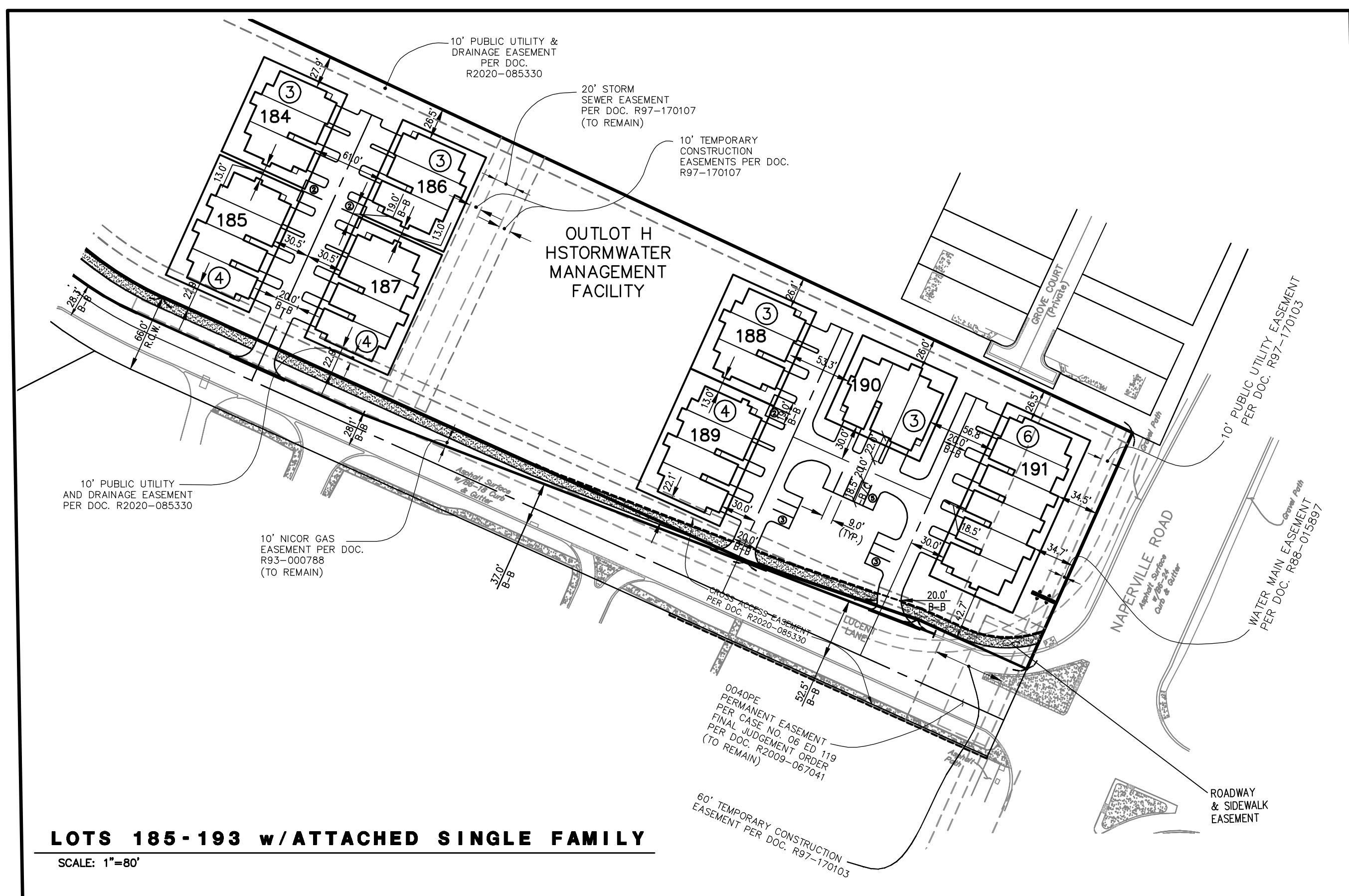
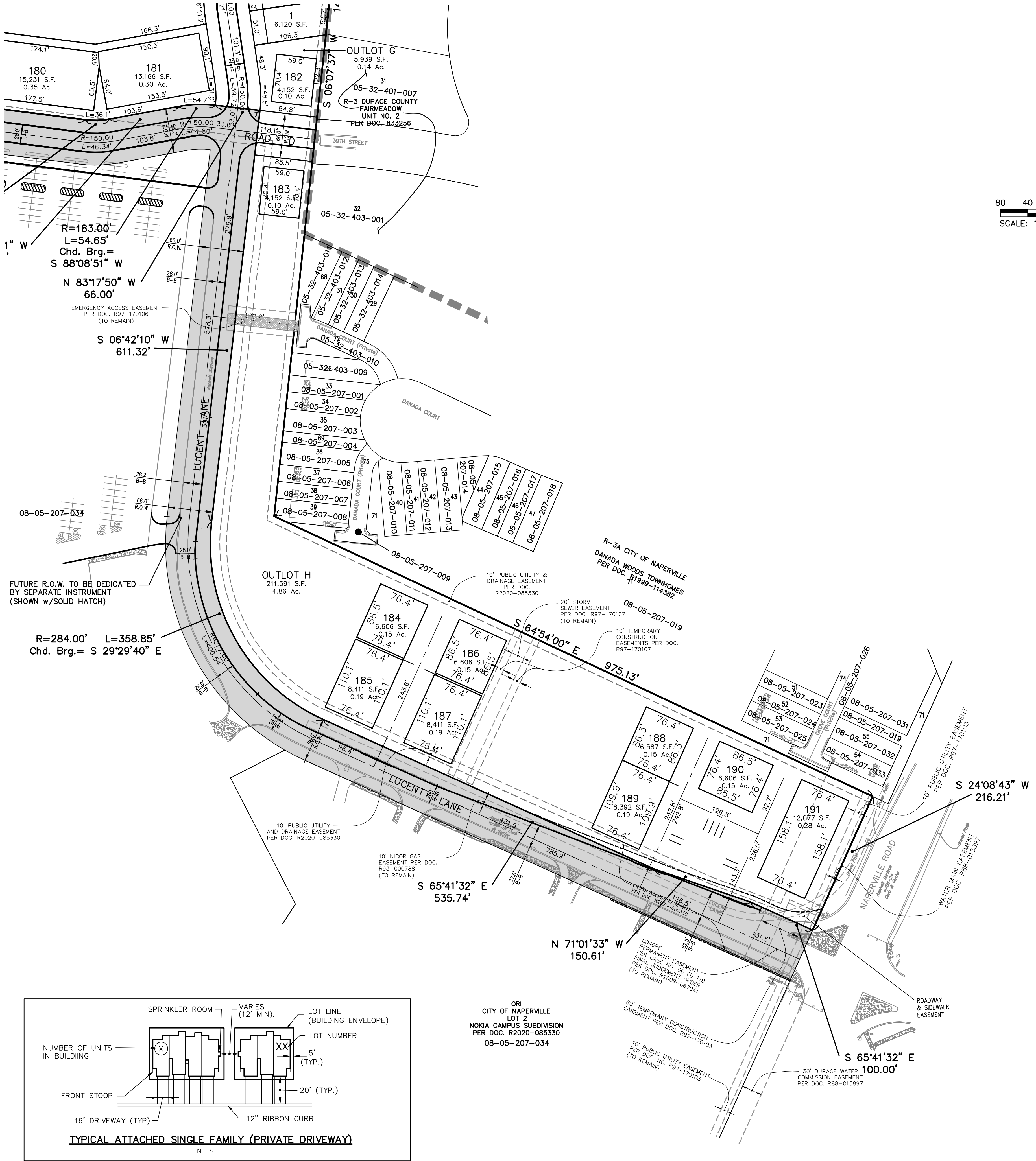
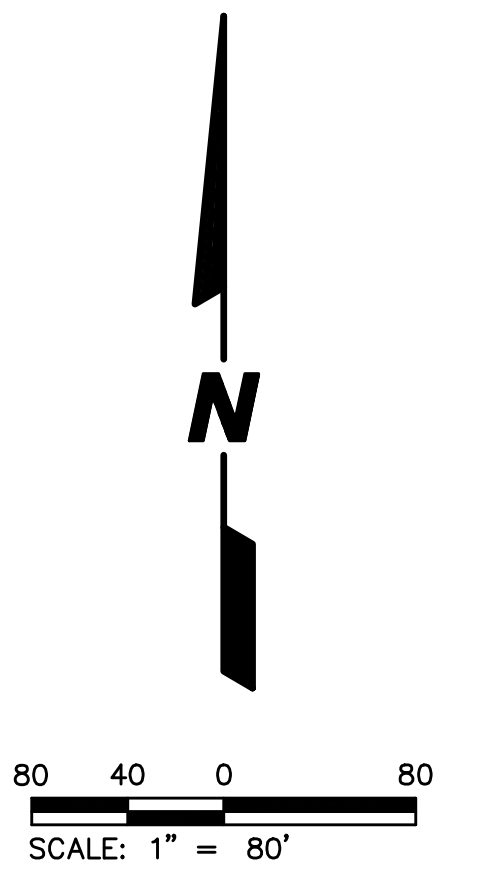
10-16-20/LAL: REVISED PER 2020-10-05 CITY COMMENTS
11-18-20/LAL: REVISED PER 2020-11-03 CITY COMMENTS

PRELIMINARY PLAT OF SUBDIVISION FOR NAPER COMMONS
CITY OF NAPERVILLE PROJECT NO. 20-1000088
SHEET 3 OF 4

Copyright © 2020 Cemcon, Ltd. All rights reserved.

DRAWING PATH: P:\2020\20\1000088\NAPER\PRELIMINARY\PRELIMINARY.PLD

SEE SHEET 3



LOTS 185-193 w/ ATTACHED SINGLE FAMILY

SCALE: 1"=80'

PREPARED BY:
CEMCON, Ltd.
 Consulting Engineers, Land Surveyors & Planners
 2280 White Oak Circle, Suite 100
 Aurora, Illinois 60502-9675
 PH: 630.862.2100 FAX: 630.862.2199
 E-Mail: cadd@cemcon.com Website: www.cemcon.com

DISC NO.: 402138 FILE NAME: PREOVR
 DRAWN BY: LAL FLD. BK. / PG. NO.: NOTES
 COMPLETION DATE: 09-14-20 JOB NO.: 402.138
 XREF : TOPO PROJECT MANAGER : CRM

PREPARED FOR:
PULTE HOME COMPANY, LLC
 1900 E. GOLF ROAD, SUITE 300
 SCHAUMBURG, IL 60173
 (847) 230-5400

10-16-20/LAL: REVISED PER 2020-10-05 CITY COMMENTS
 11-18-20/LAL: REVISED PER 2020-11-03 CITY COMMENTS
PRELIMINARY PLAT OF SUBDIVISION FOR NAPER COMMONS
CITY OF NAPERVILLE PROJECT NO. 20-1000088
SHEET 4 OF 4

PLOT FILE CREATED: 11/17/2020 BY: LESLIE LUMBERG