



**Lincoln Property Company**

Rowhome Character Perspective  
Building Type 1: B-A-A-A-B

**The Residences at Naper and Plank**  
Naperville, Illinois

The drawings presented are illustrative of character and design intent only, and are subject to change based upon final design considerations (i.e. applicable codes, structural, and MEP design requirements, unit plan / floor plan changes, etc.) © 2024 BSB Design, Inc.

February 27, 2025 | 24-0586

**EXHIBIT D**

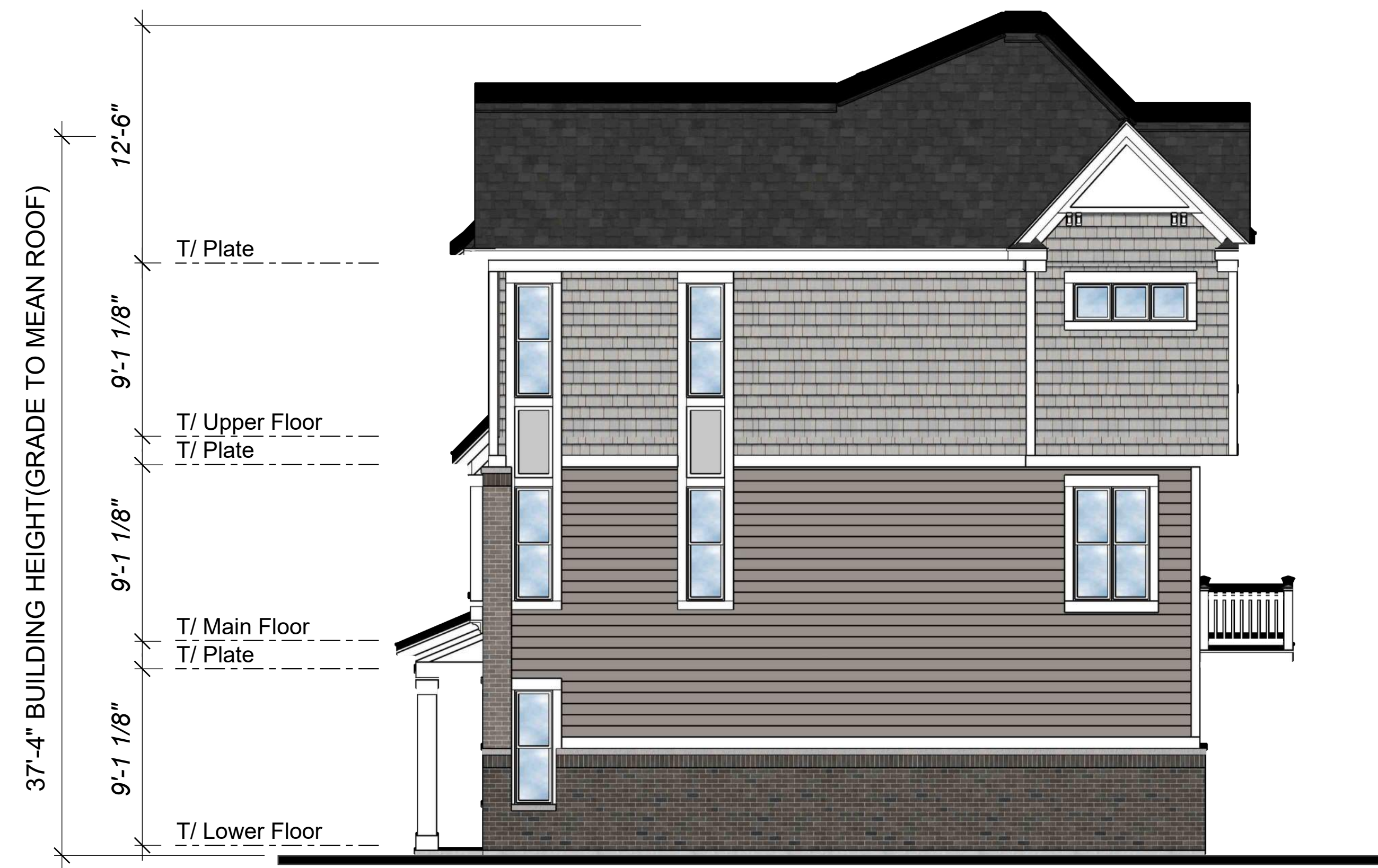




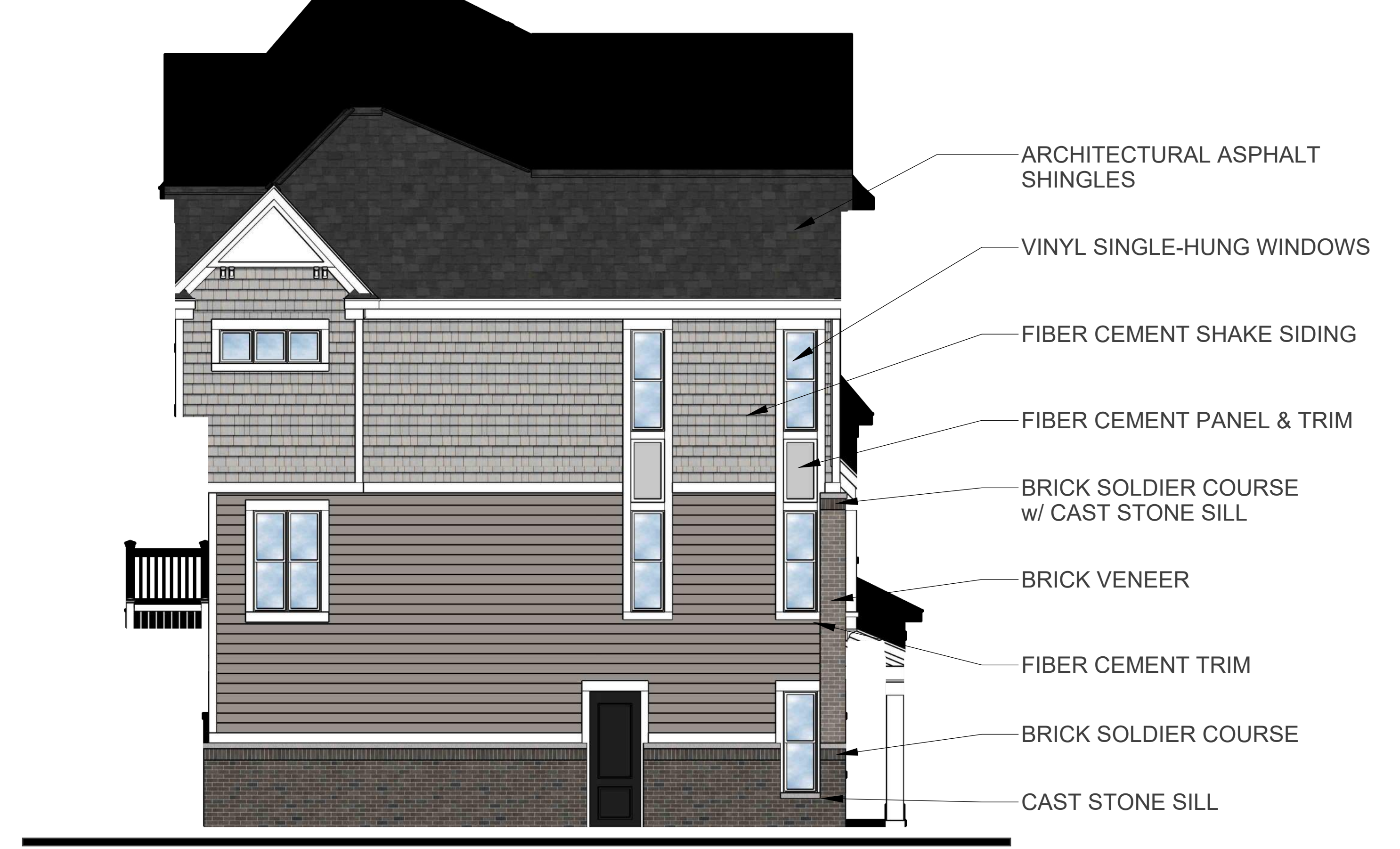


Masonry: 100%  
Front Elevation  
 Scale: 3/16" = 1'-0"





Masonry: 100%  
Typical Side Elevation  
 Scale: 3/16" = 1'-0"



Masonry: 100%  
Side Elevation (FACP)  
 Scale: 3/16" = 1'-0"



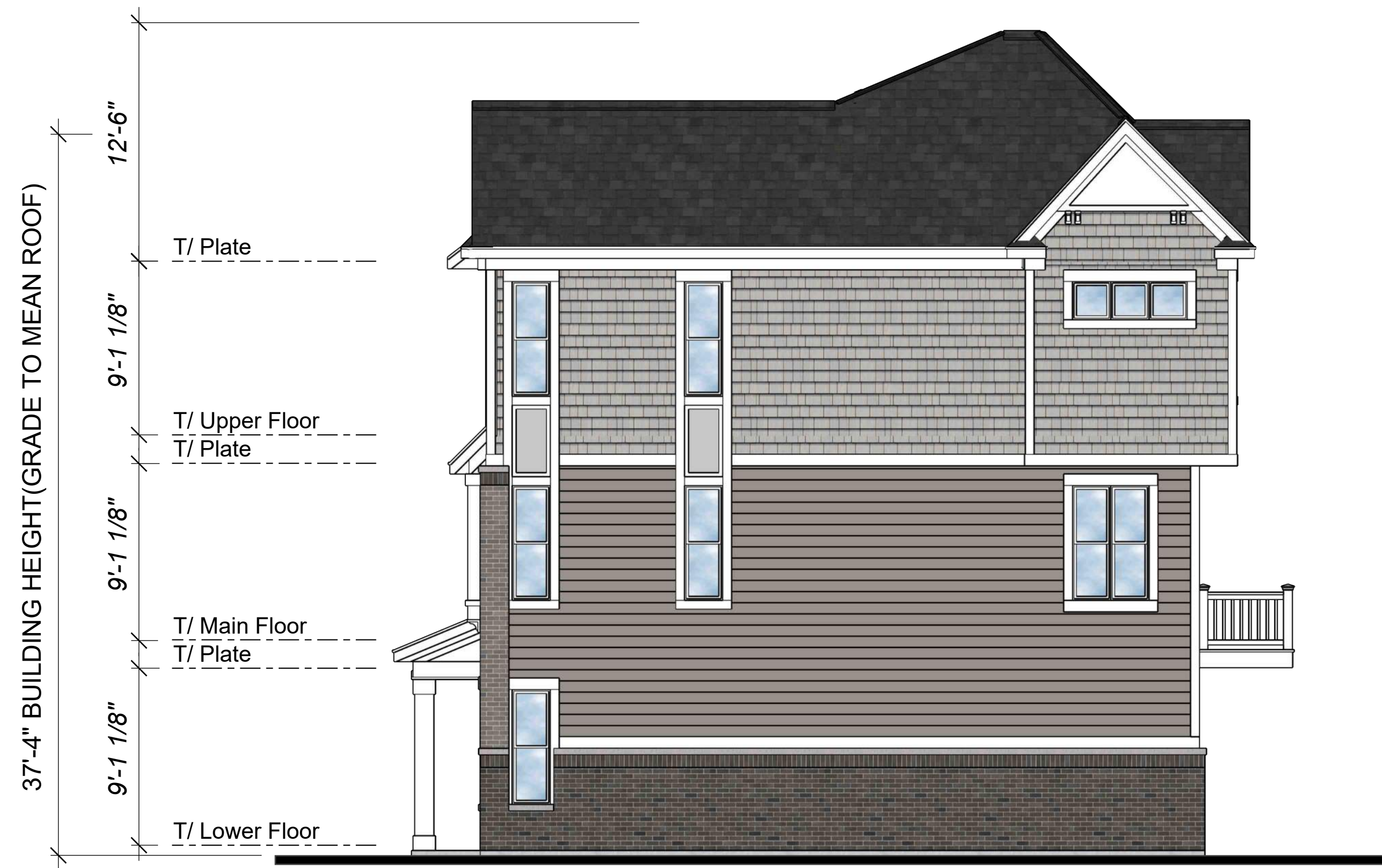
Masonry: 100%  
Rear Elevation  
 Scale: 3/16" = 1'-0"



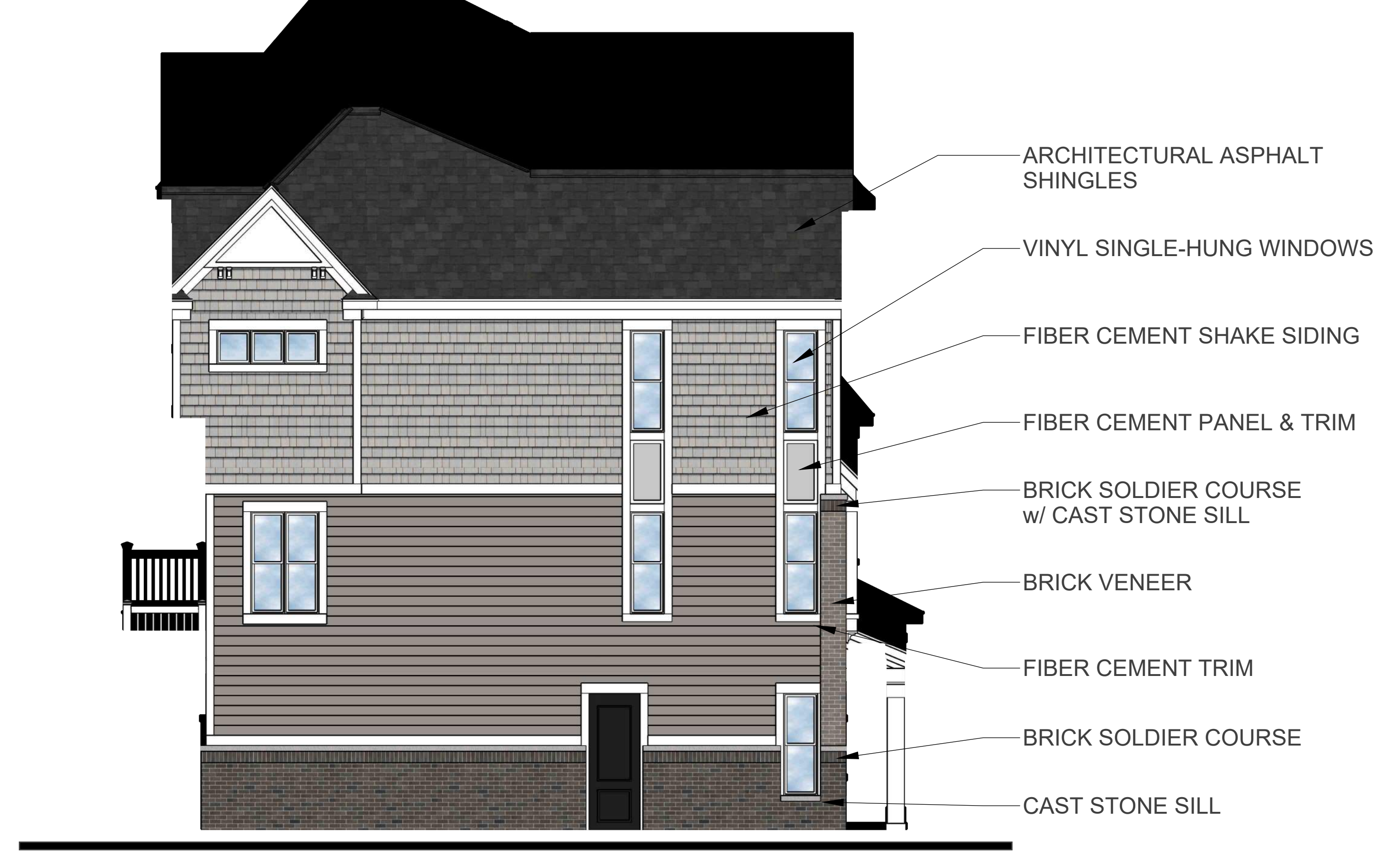


Masonry: 100%  
**Front Elevation**  
Scale: 3/16" = 1'-0"





Masonry: 100%  
Typical Side Elevation  
 Scale: 3/16" = 1'-0"



Masonry: 100%  
Side Elevation (FACP)  
 Scale: 3/16" = 1'-0"



Masonry: 100%  
Rear Elevation  
 Scale: 3/16" = 1'-0"





**Lincoln Property Company**

Townhome Character Perspective  
Building Type 3: D-C-C-D

**The Residences at Naper and Plank**  
Naperville, Illinois

The drawings presented are illustrative of character and design intent only, and are subject to change based upon final design considerations (i.e. applicable codes, structural, and MEP design requirements, unit plan / floor plan changes, etc.) © 2024 BSB Design, Inc.

**EXHIBIT D**

February 27, 2025 | 24-0586











Masonry: 100%  
Typical Side Elevation  
 Scale: 3/16" = 1'-0"



Masonry: 100%  
Side Elevation (FACP)  
 Scale: 3/16" = 1'-0"



Masonry: 100%  
Rear Elevation  
 Scale: 3/16" = 1'-0"





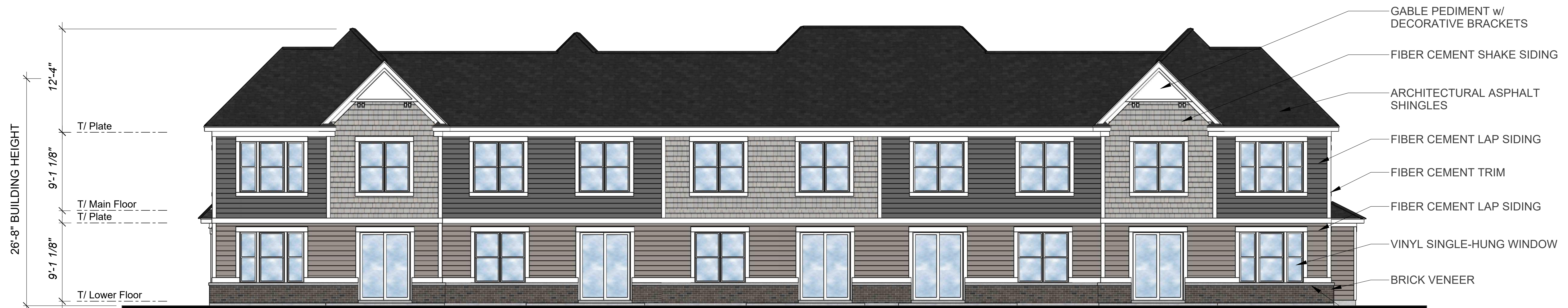




Masonry: 100%  
Typical Side Elevation  
 Scale: 3/16" = 1'-0"



Masonry: 100%  
Side Elevation (FACP)  
 Scale: 3/16" = 1'-0"



Masonry: 100%  
Rear Elevation  
 Scale: 3/16" = 1'-0"