

1 MONUMENT SIGN  
ELEVATION, TYPICAL  
SCALE: 1/8" = 1'-0"

**(2) 10'-0" x 26'-10 1/4" Double Face Illuminated Monument Sign - 266.75 SF**

**Cabinet:** Fabricated 3" x 3" x 3/16" Steel Angle (Typ) Frame  
Skin / End Filler Panels - Aluminum Painted White - Smooth Satin Finish  
**Faces:** .125" Aluminum Painted White - Smooth Satin Finish

- Seams will be present due to material size restraints

**Graphics:** Routed & Backed w/ #2447 White Acrylic  
- 3M 3635-222 Black/White Perforated Vinyl  
- 3M 3630-73 Holly Green Translucent Vinyl w/ White Border for Better Illumination

**Illumination:** Sloan Prism White LEDs w/ 60Watt Power Supplies

**Pole Cover Structure:** Fabricated 3" x 3" x 3/16" Steel Angle (Typ)

Skin - Aluminum Painted MP 18074 Sparkle Silver Metallic  
Interior of Structure Painted MP 18213 Wrought Iron Metallic

- Seams will be present due to material size restraints

**Pole Cover End Cabinets:** Fabricated Aluminum Painted MP 18074

Sparkle Silver Metallic  
- Decorative Routed Aluminum Face - Painted MP 18074 Sparkle Silver Metallic  
- White Lexan Back-up  
- White LED Illumination

**Power:** (2) 20Amp @ 277Volts Electrical Circuit Run to Site by Others  
- Photocell Control

**Mounting:** (2) ø18" x 0.375" Wall ASTM A-252 Gr. 3 Steel Pipe Embedded in Foundation

- (2) 8 3/8" x 0.322" Wall ASTM A-252 Gr. 3 Steel Pipe Inserts  
- (2) 5 1/2" x 0.255" Wall (5" Sch. 40) ASTM A-252 Gr. 3 Steel Pipe  
- Flange Mounted  
- (2) 3'-0" dia. x 13'-7" deep Concrete Foundations



COOL SILVER METALLIC CHARCOAL METALLIC

**Parvin-Clauss**  
SIGN COMPANY

Design • Fabrication • Installation • Maintenance  
165TaberwayDrive•CanaoStream•Illinois60138  
Tel/630-510-2020 • Fax/630-510-2074  
e-mail/signs@parvinclauss.com  
www.parvinclauss.com

**PROJECT:**

**EQUUS**  
CAPITAL PARTNERS, LTD.

55 Shuman Blvd.  
Naperville, IL

**CUSTOMER APPROVAL:**

DATE \_\_\_\_\_

AUTHORIZED SIGNATURE \_\_\_\_\_

REPRESENTATIVE \_\_\_\_\_

DRAWN BY Lisa Staszak

DATE \_\_\_\_\_

SCALE 2.01.18

SHEET NO. 1/8" = 1'

WORK ORDER 79100

FILE NAME ECP79100

**REVISIONS:**

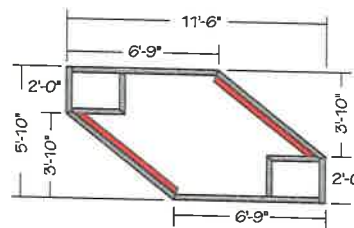
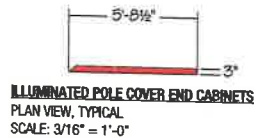
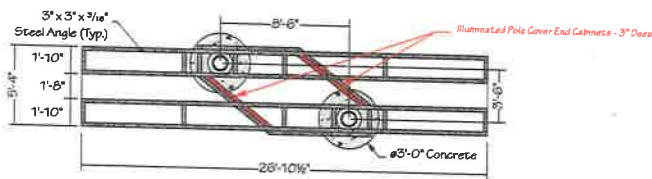
- 1 2.09.18 - new design
- 2 2.14.18 - new logo
- 3 7.19.18 - simple design
- 4 7.20.18 - pole cover
- 5 7.23.18 - pole cover design
- 6 7.26.18 - pole cover design
- 7 7.27.18 - increase font weight
- 8 10.25.18 - per Cannon Design
- 9 11.27.18 - PCS value engineering
- 10 12.17.18 - conceal posts
- 11 12.26.18 - face lit channel lts.
- 12 4.11.19 - 40' oah / routed & backed

This sign is intended to be installed in accordance with the requirements of Article 600 of the National Electrical Code and/or other applicable local codes. This includes proper grounding and bonding of the sign.

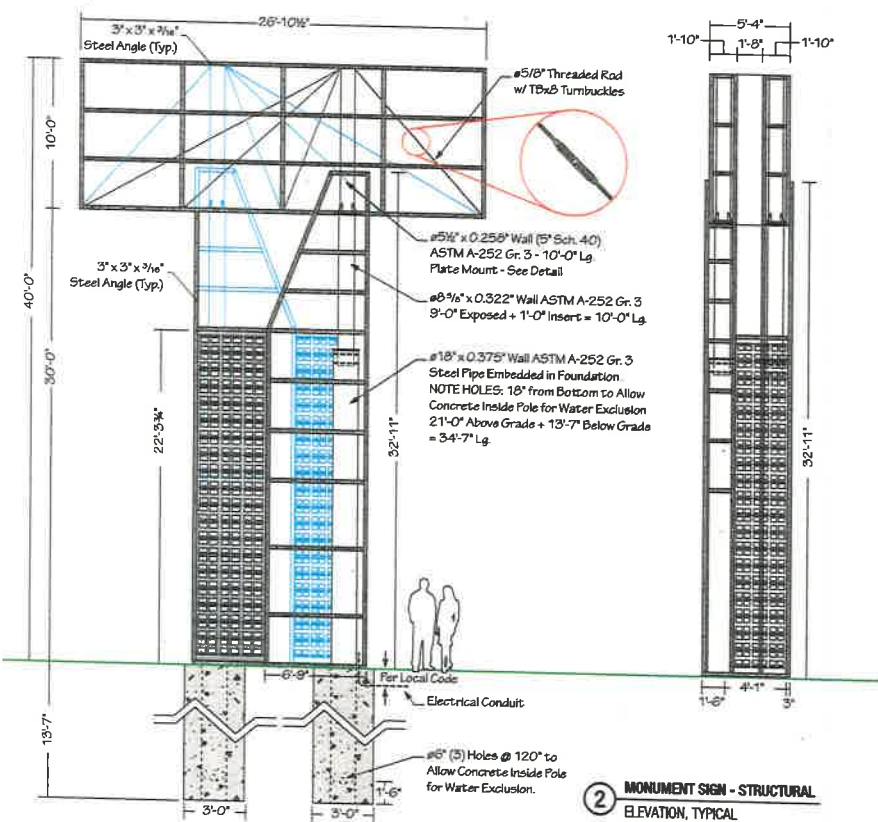
This sign is built to UL Standards for operation in North America.

This Document is owned by, and the information contained in it is proprietary to, Parvin-Clauss Sign Company. By receipt hereof the holder agrees not to use the information, disclose it to any third party, nor reproduce this document without the prior written consent of Parvin-Clauss Sign Company. Holder also agrees to immediately return this document upon request of Parvin-Clauss Sign Company.

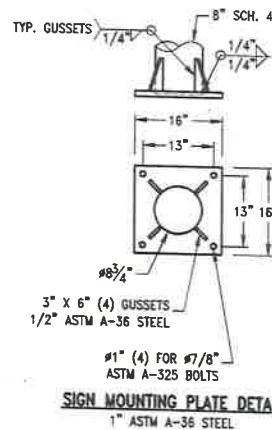
© Copyright 2018 by Parvin-Clauss Sign Co.



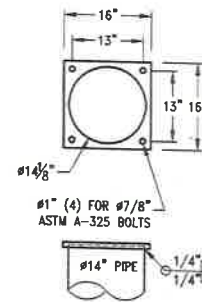
**2a** MONUMENT SIGN - POLE COVER  
PLAN VIEW, TYPICAL  
SCALE: 3/16" = 1'-0"



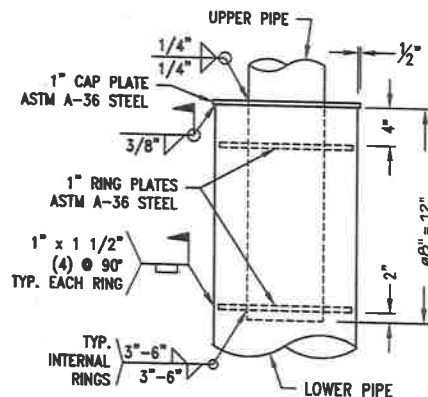
**2** MONUMENT SIGN - STRUCTURAL  
ELEVATION, TYPICAL  
SCALE: 1/8" = 1'-0"



**SIGN MOUNTING PLATE DETAIL**  
1" ASTM A-36 STEEL



**POLE TOP PLATE DETAIL**  
1" ASTM A-36 STEEL



**JOINT DETAIL**

**Parvin-Claus**  
SIGN COMPANY

Design • Fabrication • Installation • Maintenance  
1657ubeway Drive • Carol Stream, Illinois 60188  
Tel/630-510-2020 • Fax/630-510-2074  
e-mail/signs@parvinclaus.com  
www.parvinclaus.com

**PROJECT:**



55 Shuman Blvd.  
Naperville, IL

**CUSTOMER APPROVAL:**

DATE

AUTHORIZED SIGNATURE

REPRESENTATIVE  
Lisa Staszak

DRAWN BY  
Bill Marlow

DATE  
2.01.18

SCALE  
as noted

SHEET NO.  
2 of 2

WORK ORDER  
79100

FILE NAME  
ECP79100

**REVISIONS:**

- 1 2.09.18 - new design
- 2 2.14.18 - new logo
- 3 7.19.18 - simple design
- 4 7.20.18 - pole cover
- 5 7.23.18 - pole cover design
- 6 7.26.18 - pole cover design
- 7 7.27.18 - increase font weight
- 8 10.25.18 - per Cannon Design
- 9 11.27.18 - PCS value engineering
- 10 12.17.18 - conceal posts
- 11 12.26.18 - face lit channel lts.
- 12 4.11.19 - 40' oah / routed & backed

This sign is intended to be installed in accordance with the requirements of Article 600 of the National Electrical Code and/or other applicable local codes. This includes proper grounding and bonding of the sign.



This sign is built to UL Standards for operation in North America.

\*This Document is owned by, and the information contained in it is proprietary to, Parvin-Claus Sign Company. By receipt hereof the holder agrees not to use the information, disclose it to any third party, nor reproduce this document without the prior written consent of Parvin-Claus Sign Company. Holder also agrees to immediately return this document upon request of Parvin-Claus Sign Company.\*

© Copyright 2018 by Parvin-Claus Sign Co.