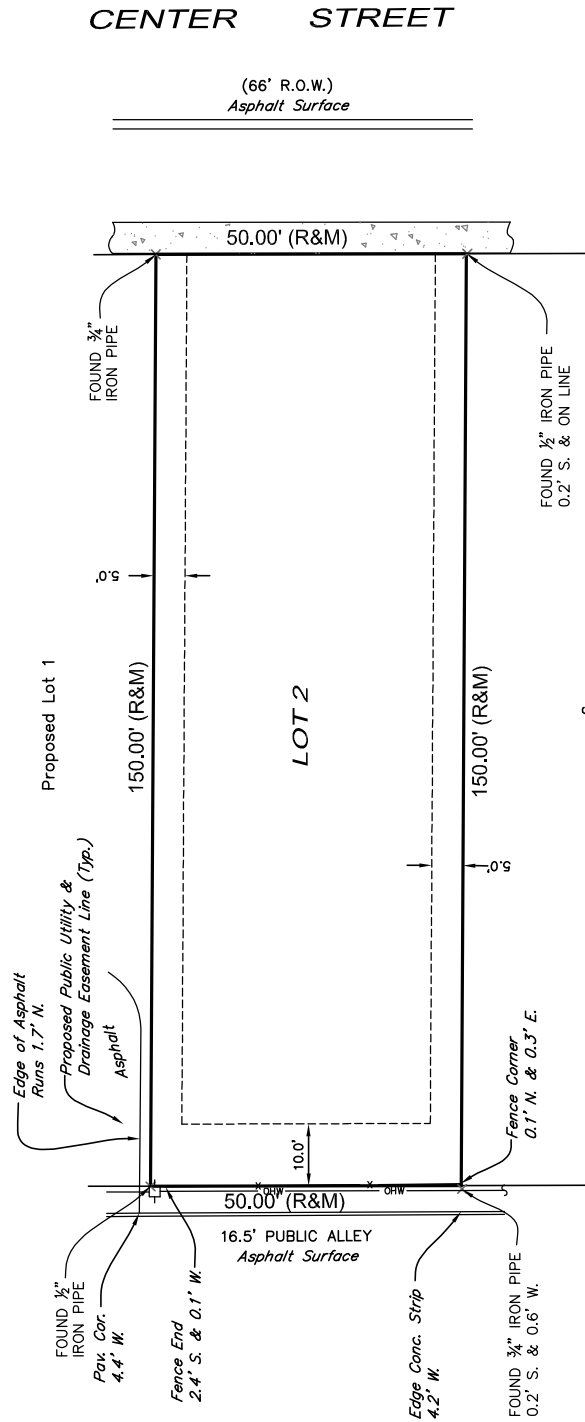


# EXHIBIT OF PROPOSED LOT 2



## SYMBOL LEGEND

- CONCRETE SURFACE
- X-X- - FENCE LINE
- (R) - RECORD DATA
- (M) - MEASURED DATA
- - UTILITY POLE
- OHW- - OVERHEAD WIRES
- ROW - RIGHT-OF-WAY

### NOTES

SURVEYED AREA: 7,500± SQ. FT.  
 MEASUREMENTS ARE SHOWN IN FEET AND DECIMAL PARTS THEREOF.



DATED THIS 25TH DAY OF OCTOBER, 2021.

ILLINOIS PROFESSIONAL LAND SURVEYOR NO. 035-003483  
 MY REGISTRATION EXPIRES ON NOVEMBER 30, 2022  
 PROFESSIONAL DESIGN FIRM LICENSE NUMBER 184-002937  
 EXPIRES APRIL 30, 2023

PARCEL INDEX NUMBER	
08-18-101-1B0	
EXHIBIT OF LOT 2	10/12/21 FILE 10/23/21-JLK

Copyright © 2021 Cemcon, Ltd. All rights reserved  
 COMMON ADDRESS 715 N. CENTER ST., NAPERVILLE, IL  
 CLIENT: DELORENZO  
 JOB NO.: 7600.004  
 SCALE: 1" = 20' SHEET: 1 OF 1  
 DWG: -\dwg\Building Services\

**CEMCON, Ltd.**  
 Consulting Engineers,  
 Land Surveyors & Planners  
 2280 White Oak Circle, Suite 100  
 Aurora, Illinois 60502-9675  
 Phone: 630-862-2100  
 Fax: 630-862-2199