



Front Elevation
scale: 3/16" = 1'-0"

**Urban Series - Northwoods of Naperville
Masonry Façade Percentage - 7-Unit Mix**

Material	Color	Manufacturer
1 Cementitious - Lap Siding #1	Pearl Gary	James Hardie
2 Cementitious - Lap Siding #2	Aspen Ridge	Woodstone Rustic Series - James Hardie
3 Cementitious - Panel Siding w/ Reglets #1	Pearl Gray	James Hardie
4 Cementitious - Panel Siding w/ Reglets #2	Aged Pewter	James Hardie
5 Cementitious - Exterior Trim #1	Pearl Gray (Match Contiguous Siding)	James Hardie
6 Cementitious - Exterior Trim #2	Aged Pewter (Match Contiguous Siding)	James Hardie
7 Cementitious - Exterior Trim #3	Aged Pewter (Contiguous to Woodtone)	James Hardie
8 Aluminum Coping #1	Victorian Gray (Contiguous to Pearl Gray)	ACM American Construction Metal
9 Aluminum Coping #2	Charcoal Gray (Contiguous to Aged Pewter)	ACM American Construction Metal
10 Aluminum Rails	Black	ACM American Construction Metal
11 Aluminum Scupper / Gutter / Down Spouts	Black	ACM American Construction Metal
12 Steel - Canopy	Black	ACM American Construction Metal
13 Brick - Modular	Vintage Black Velour	Glen - Gery
14 Steel Insulated - Garage Door	Aged Pewter	Shewin Williams to Match
15 Fiberglass - Front Door	Ink Well	SW6992
16 Balcony Box	Aged Pewter	Shewin Williams to Match
17 Vinyl - Windows - Casement	Black	MI Windows

Building Calculations	Left Elevation	Rear Elevation	Right Elevation	Front Elevation
	Square Feet	Square Feet	Square Feet	Square Feet
Total Façade	1,637	3,842	1,463	4,059
Total Masonry on Façade	493	156	454	1,071
Percentage of Masonry	30%	4%	31%	26%

Building Total
Square Feet
11,001
2,174
20%

Front Elevation Calculations	A	B	C	D	E	F	G	Front Elevation Total
	Square Feet	Square Feet	Square Feet	Square Feet	Square Feet	Square Feet	Square Feet	Square Feet
Total Façade	577	581	581	581	581	581	577	4,059
Total Masonry on Façade	233	121	121	121	121	121	233	1,071
Percentage of Masonry	40%	21%	21%	21%	21%	21%	40%	26%



M/I Homes of Chicago, LLC
Naperville, IL

**7 - Unit Building Mix
Preliminary Character Elevations**

NORTHWOODS OF NAPERVILLE
Naperville, Illinois

December 19, 2024





Rear Elevation

scale: 3/16" = 1'-0"



Left Elevation

scale: 3/16" = 1'-0"



Right Elevation

scale: 3/16" = 1'-0"



M/I HOMES

Welcome to Better

M/I Homes of Chicago, LLC

Naperville, IL

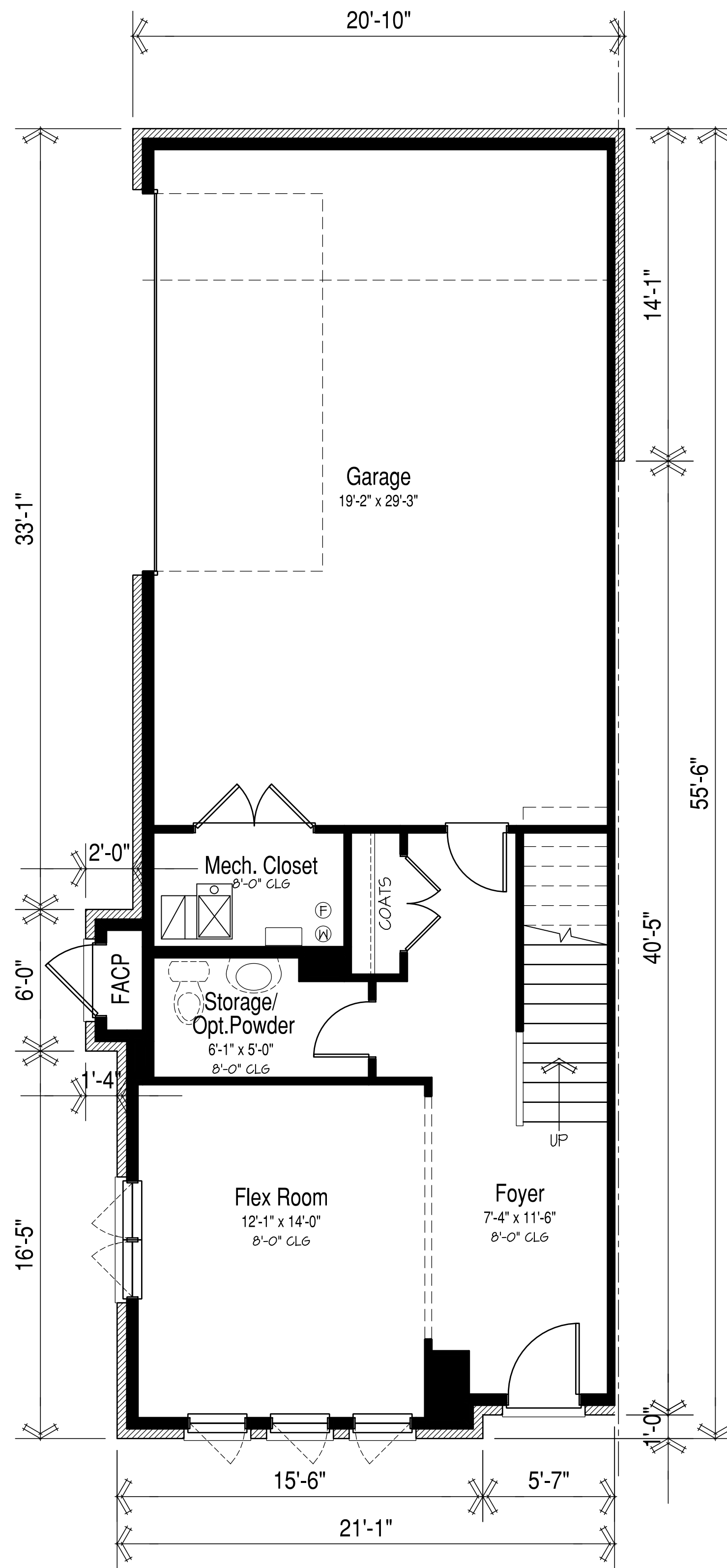
**7 - Unit Building Mix
Preliminary Character Elevations**

NORTHWOODS OF NAPERVILLE

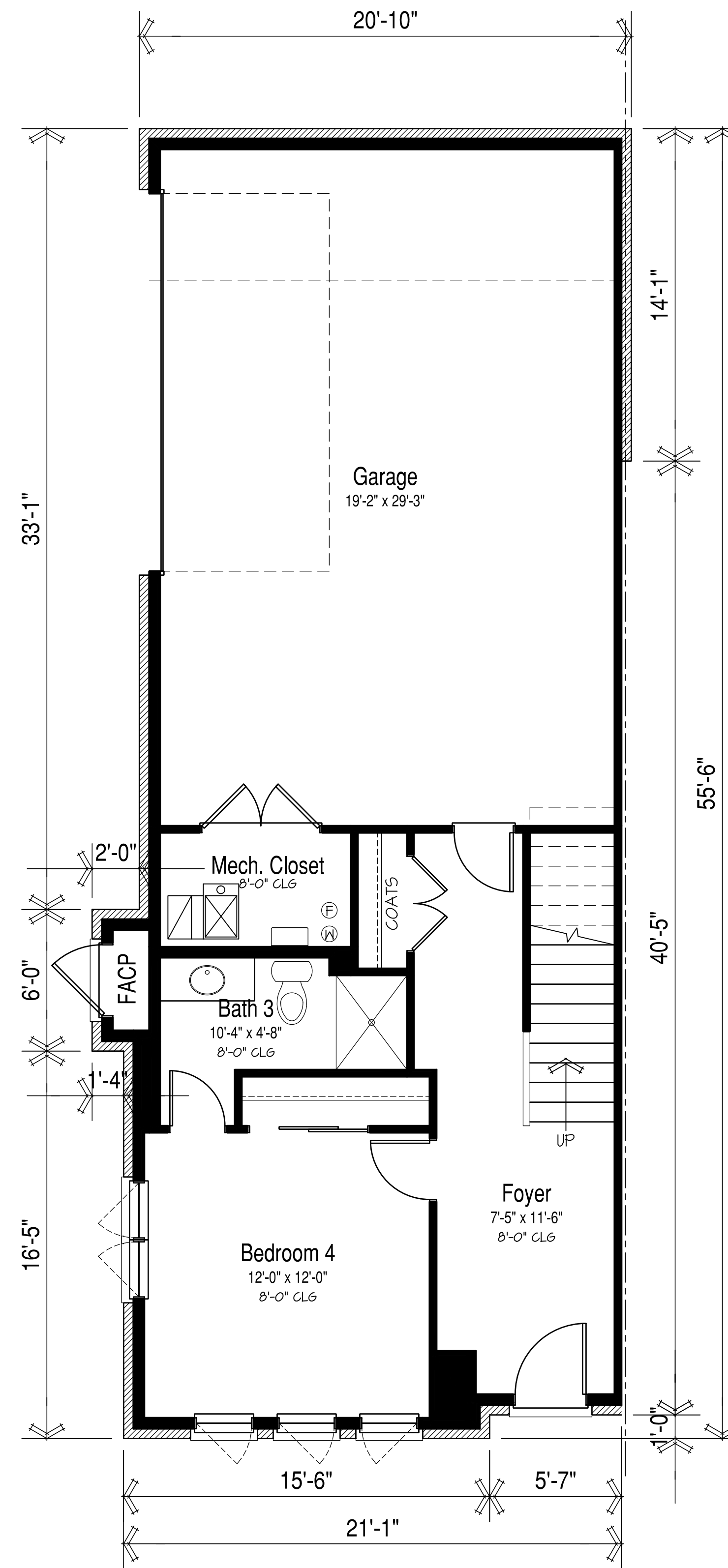
Naperville, Illinois

December 19, 2024

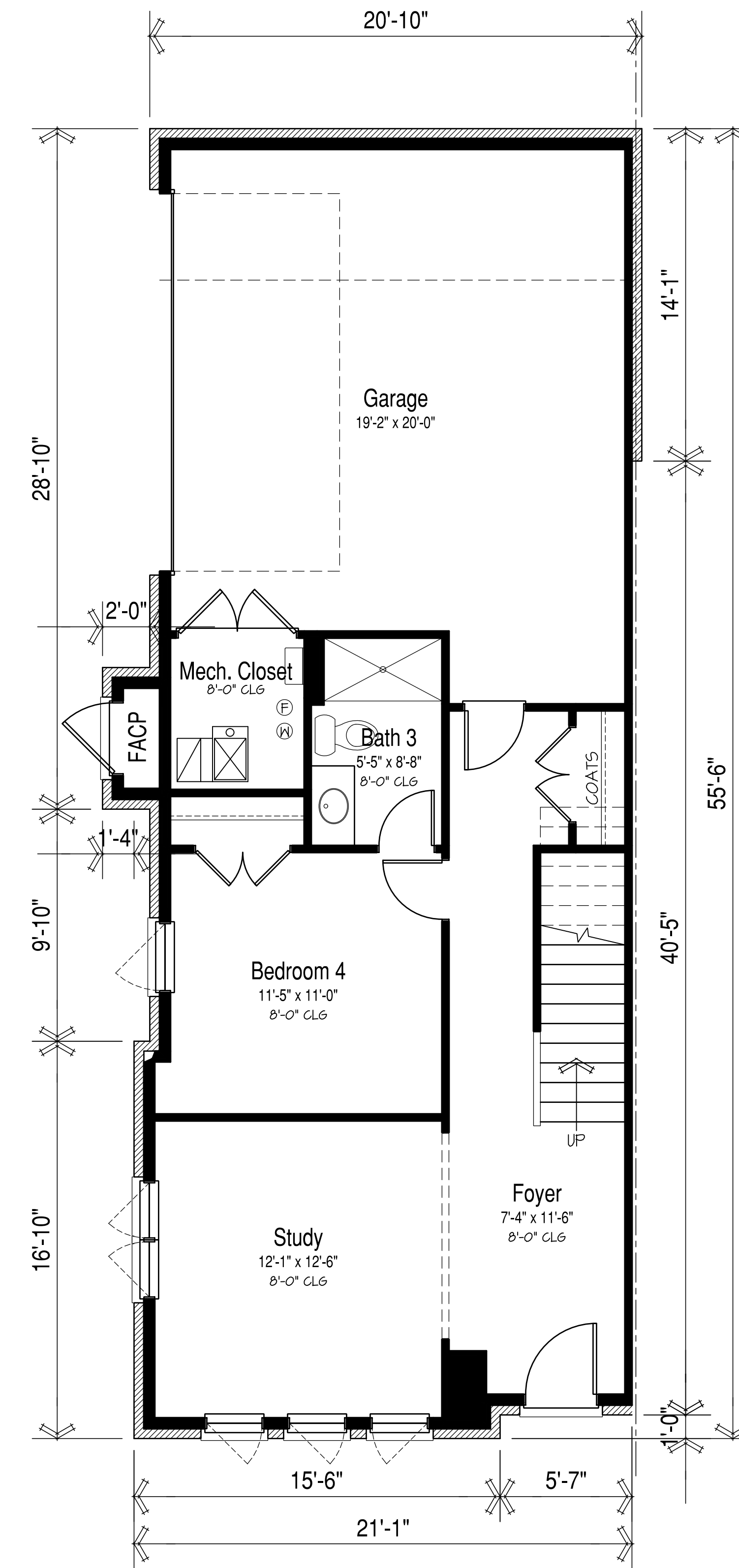




520 SF / 1107 GSF
Lower Level Layout
 scale: 1/4" = 1'-0"



520 SF / 1107 GSF
 Optional Bedroom 4/ Bath 3
Lower Level Layout Alt. 1
 scale: 1/4" = 1'-0"



658 SF / 1107 GSF
 Optional Study/ Bedroom 4/ Bath 3
Lower Level Layout Alt. 2
 scale: 1/4" = 1'-0"



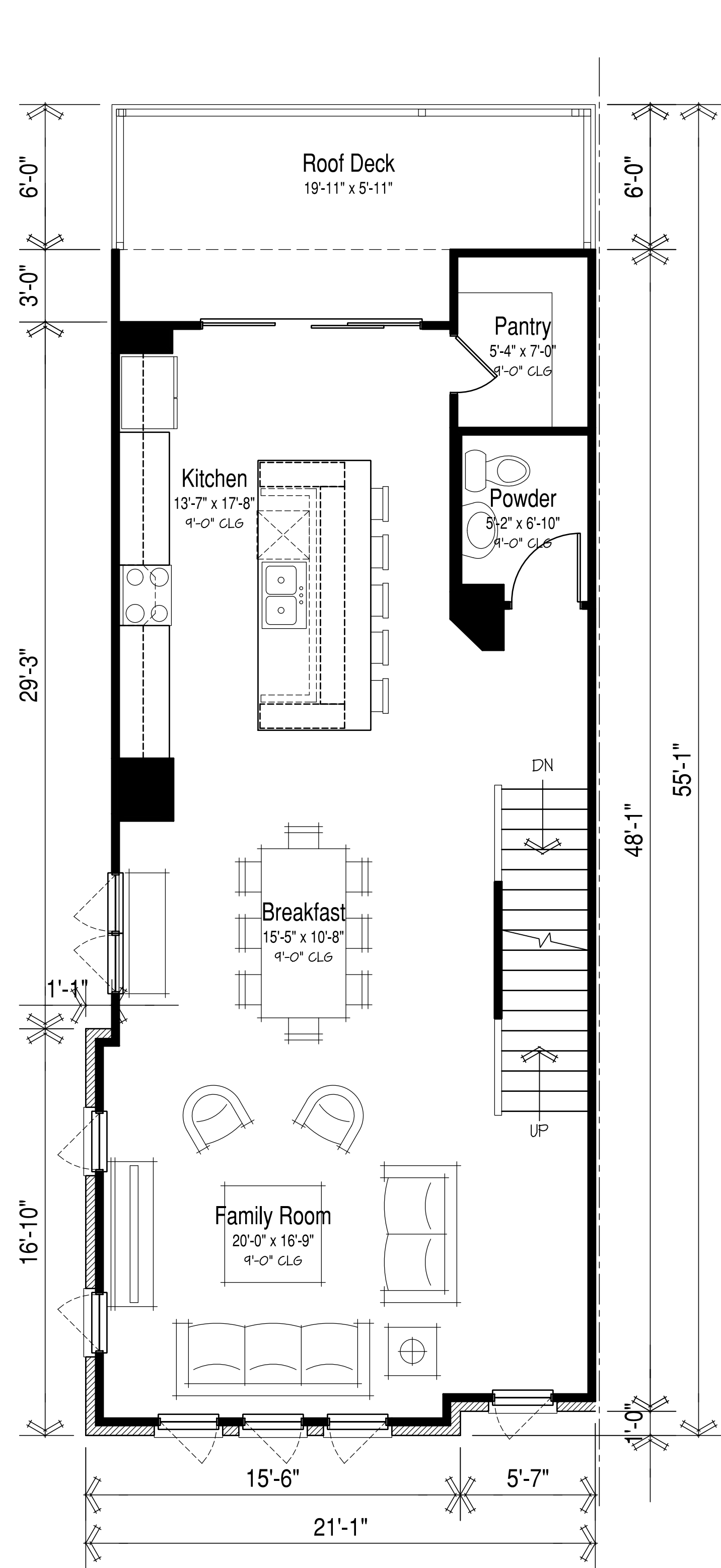
M/I Homes of Chicago, LLC
 Naperville, IL

Unit 'A' : 3111 S.F.
Preliminary Floor Plan Layouts

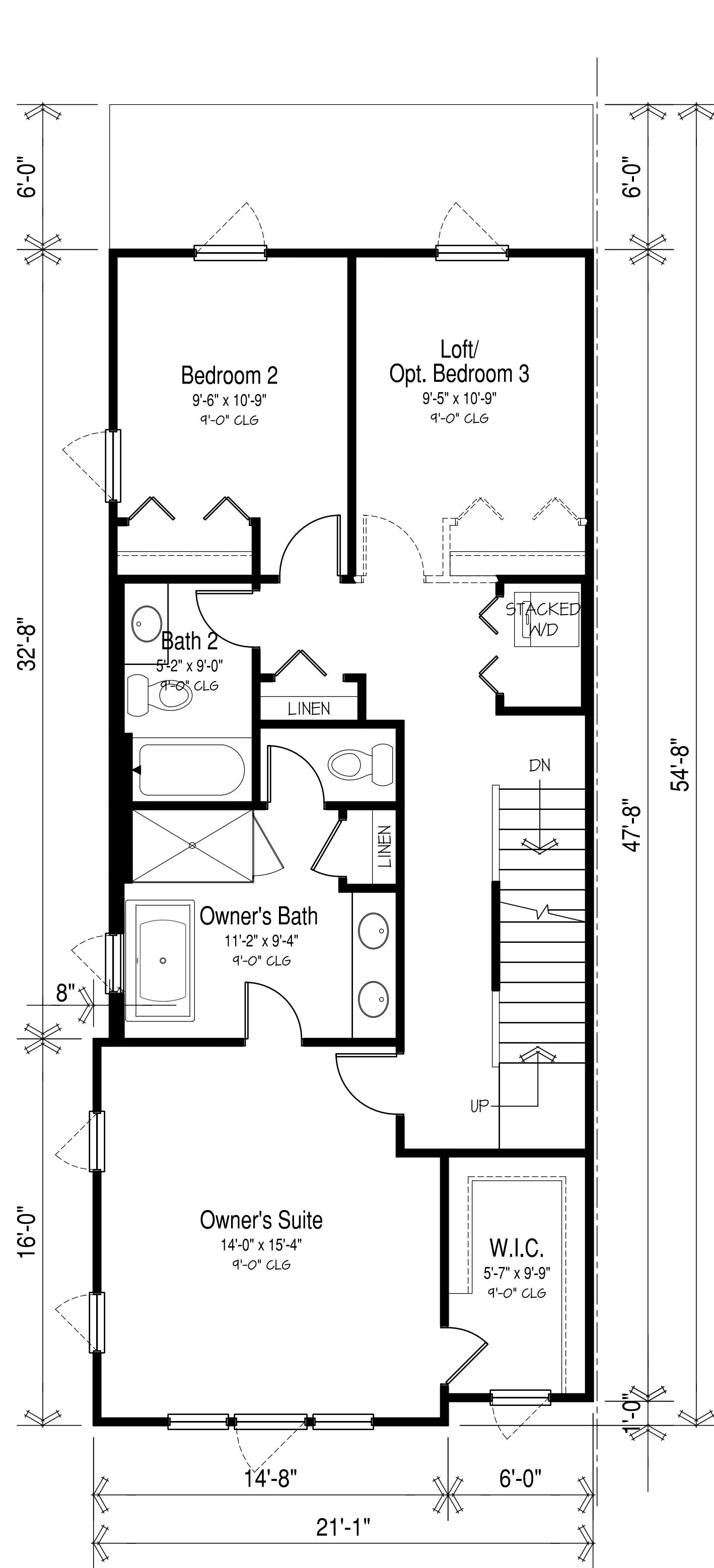
NORTHWOODS OF NAPERVILLE

Naperville, Illinois

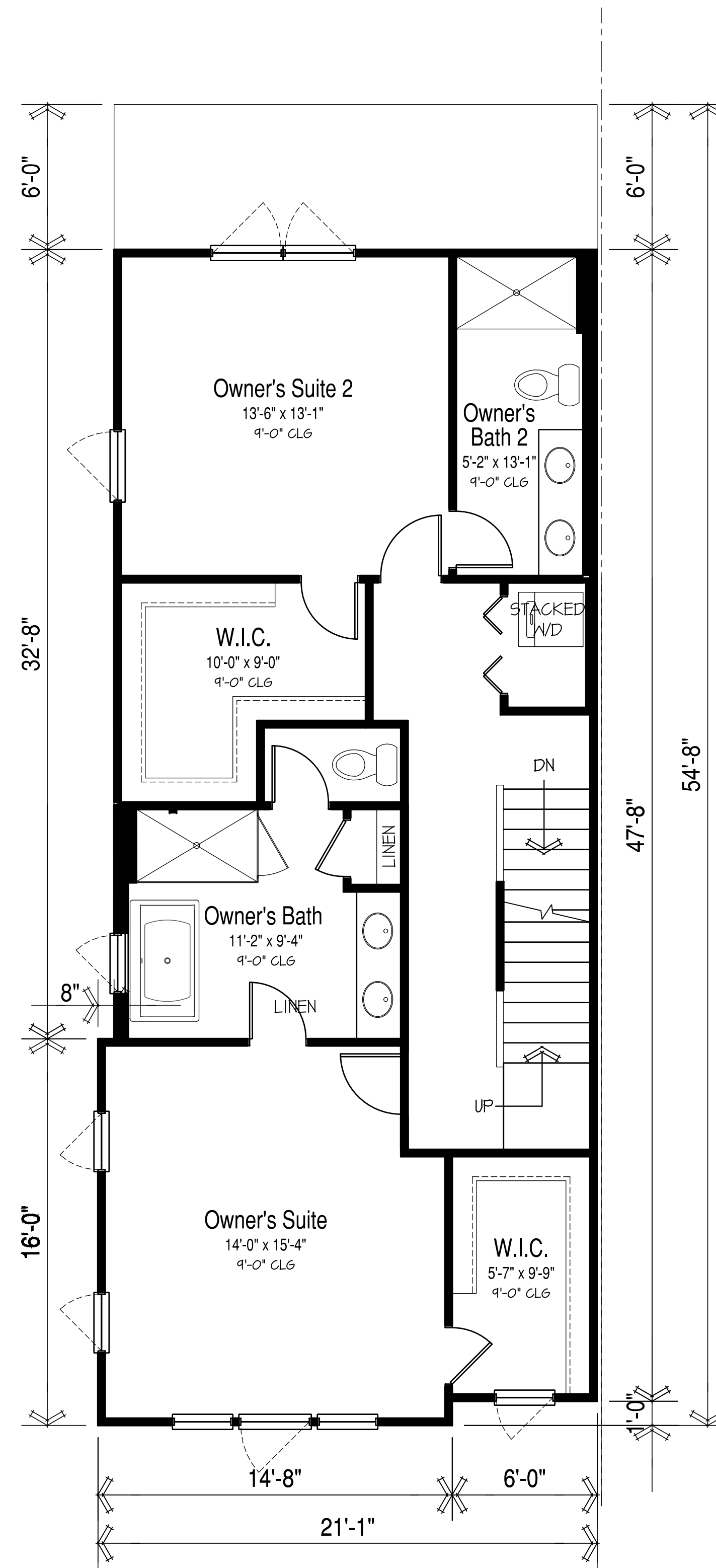




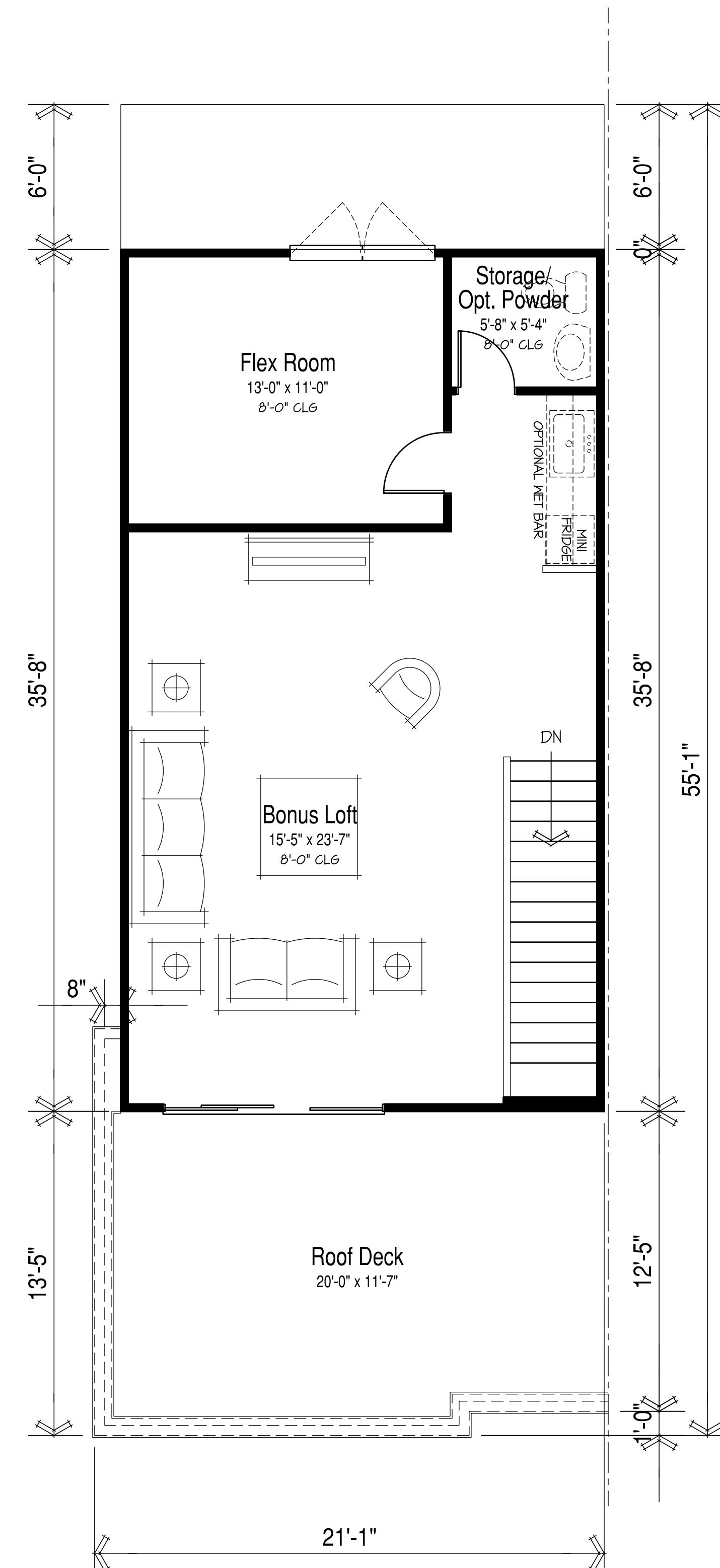
944 SF / 944 GSF
Main Level Layout
 scale: 1/4" = 1'-0"



986 SF / 986 GSF
Upper Level Layout
 scale: 1/4" = 1'-0"



986 SF / 986 GSF
 Optional Dual Suites
Upper Level Layout Alt.
 scale: 1/4" = 1'-0"



661 SF / 719 GSF
Roof Level Layout
 scale: 1/4" = 1'-0"



M/I HOMES
 Welcome to Better

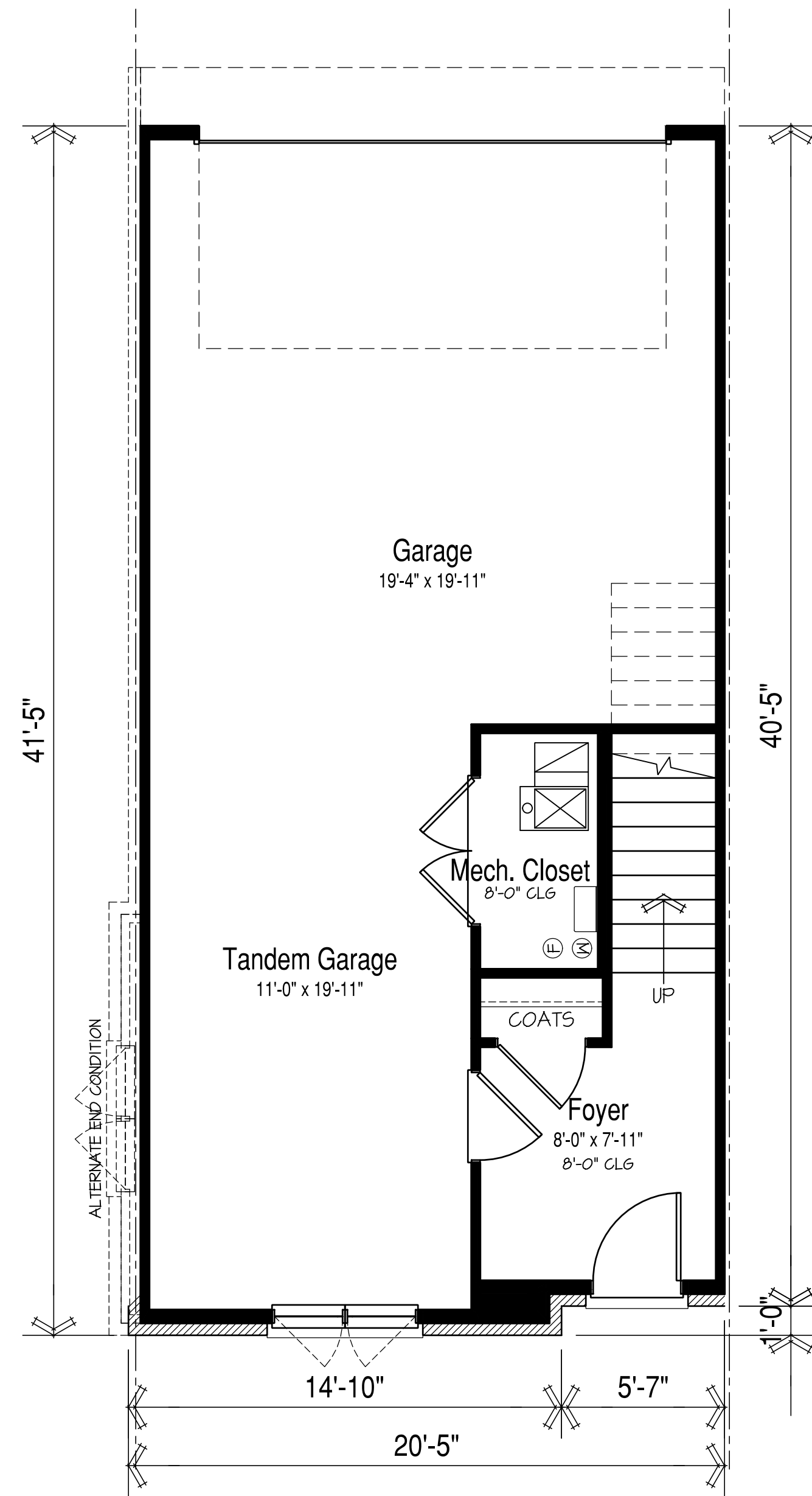
M/I Homes of Chicago, LLC
 Naperville, IL

Unit 'A' : 3003 S.F.
Preliminary Floor Plan Layouts

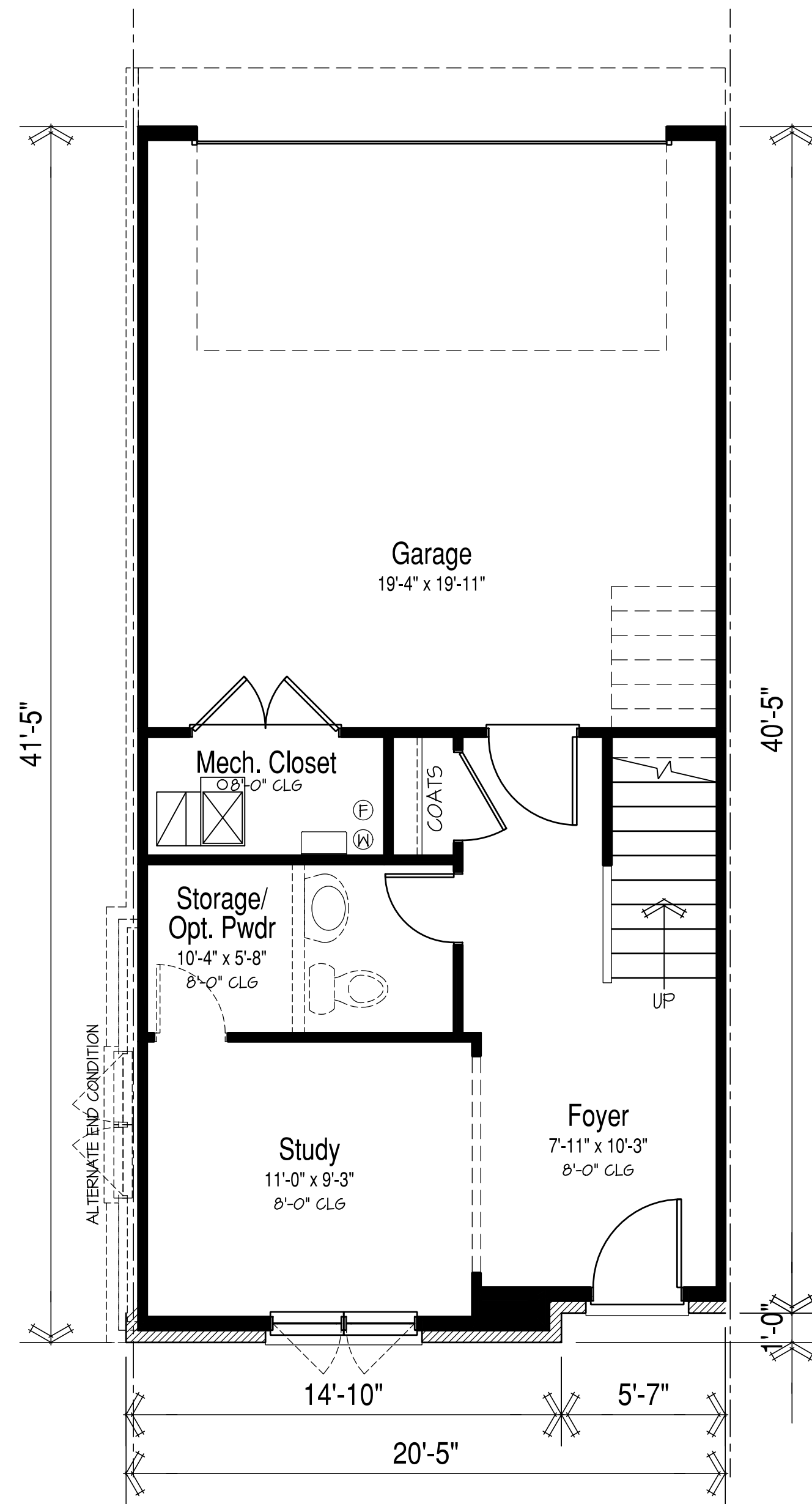
NORTHWOODS OF NAPERVILLE

Naperville, Illinois

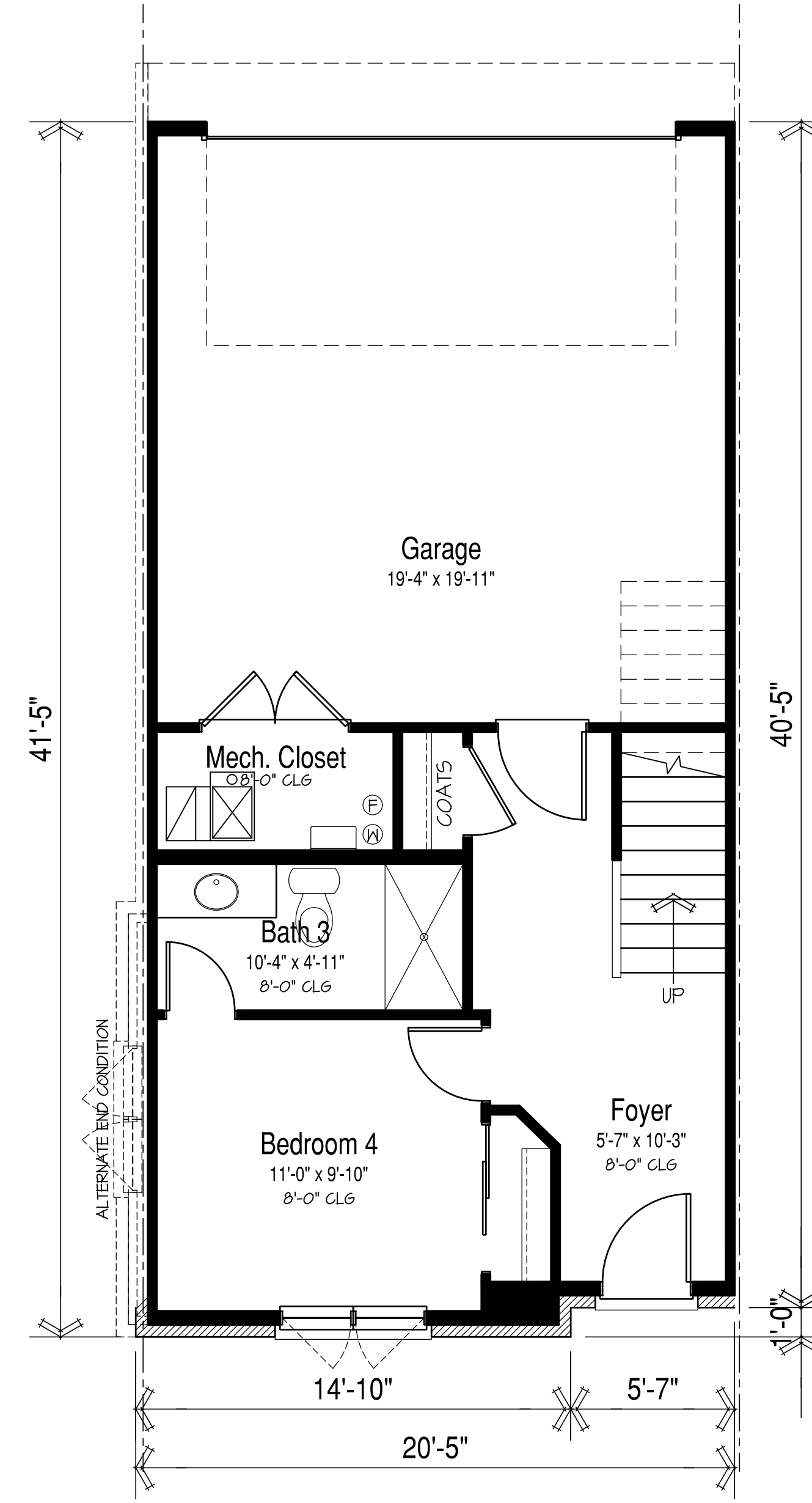




175 SF / 827 GSF
Lower Level Layout
 scale: 1/4" = 1'-0"



411 SF / 827 GSF
 Optional Study/ Powder Room
Lower Level Layout Alt. 1
 scale: 1/4" = 1'-0"



411 SF / 827 GSF
 Optional Bedroom 4/ Bath 3
Lower Level Layout Alt. 2
 scale: 1/4" = 1'-0"



M/I HOMES
 Welcome to Better

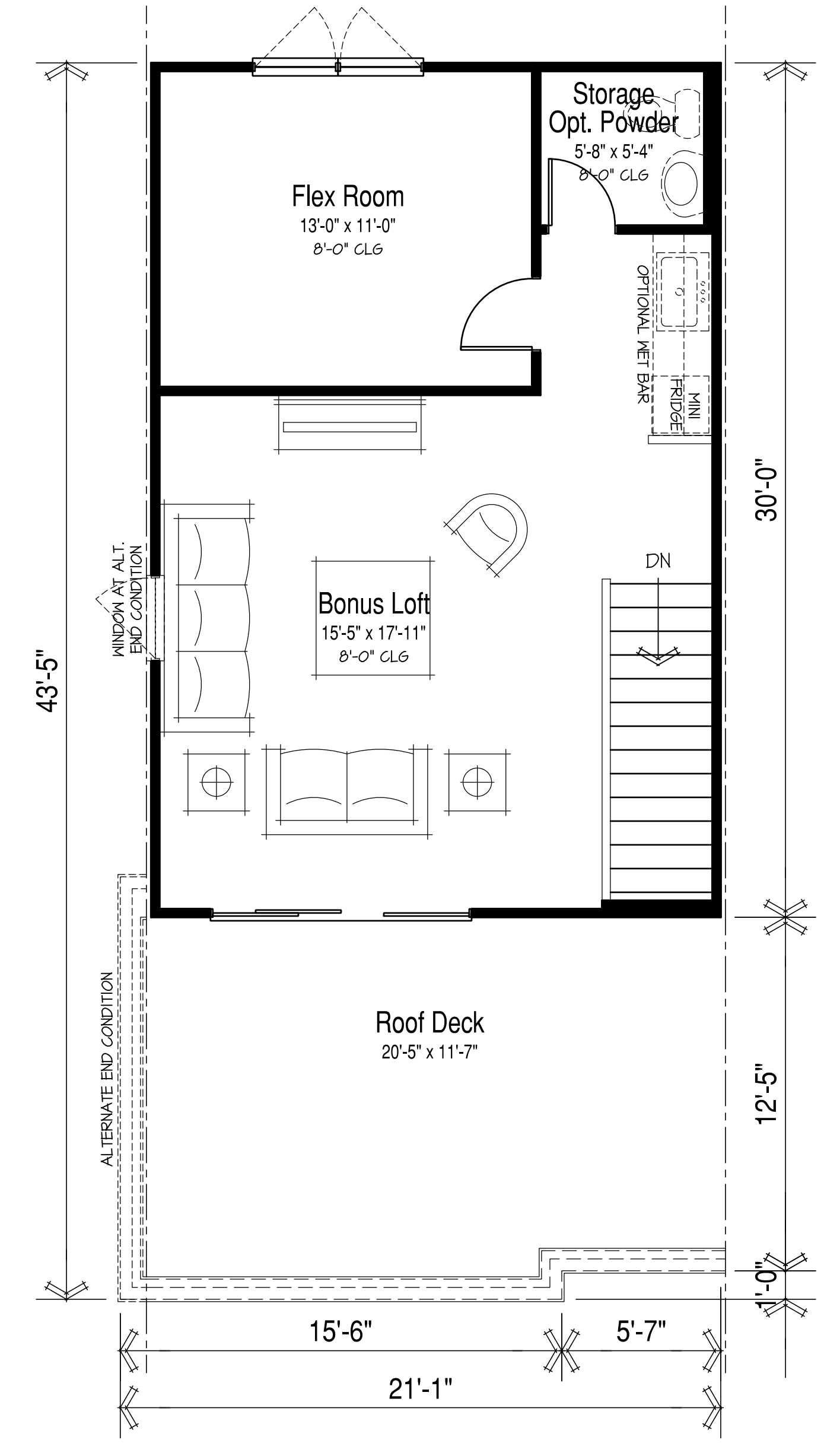
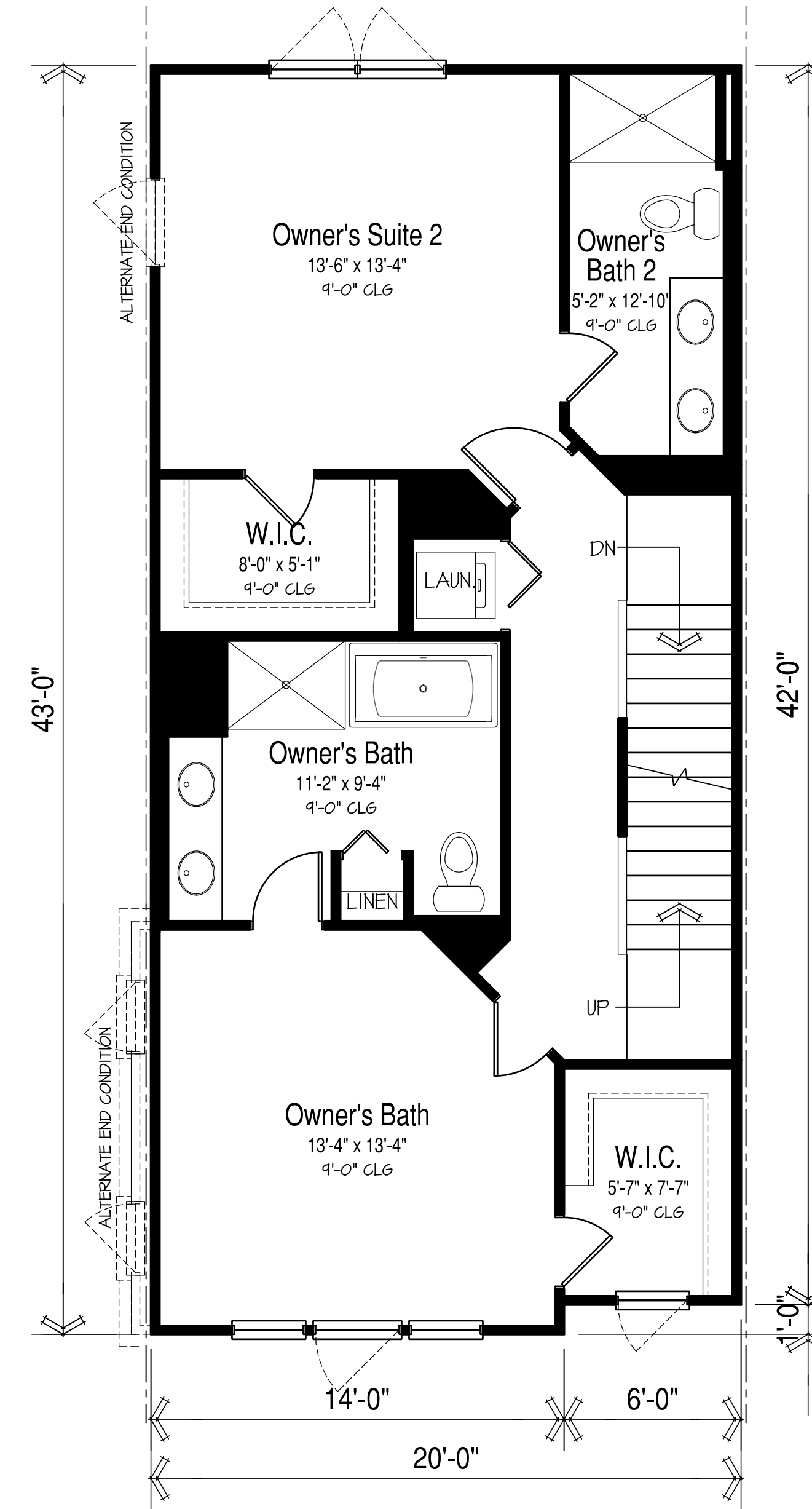
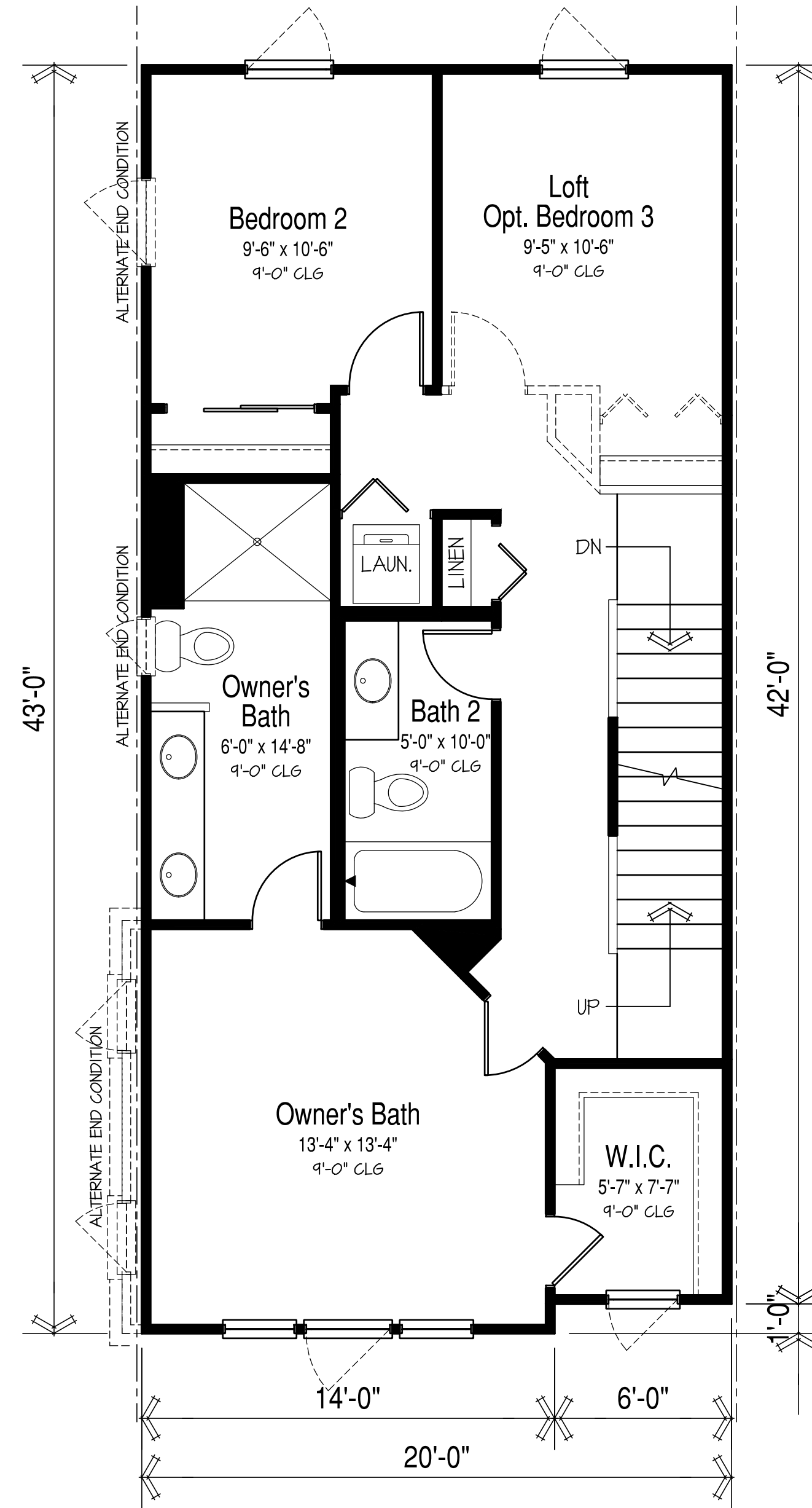
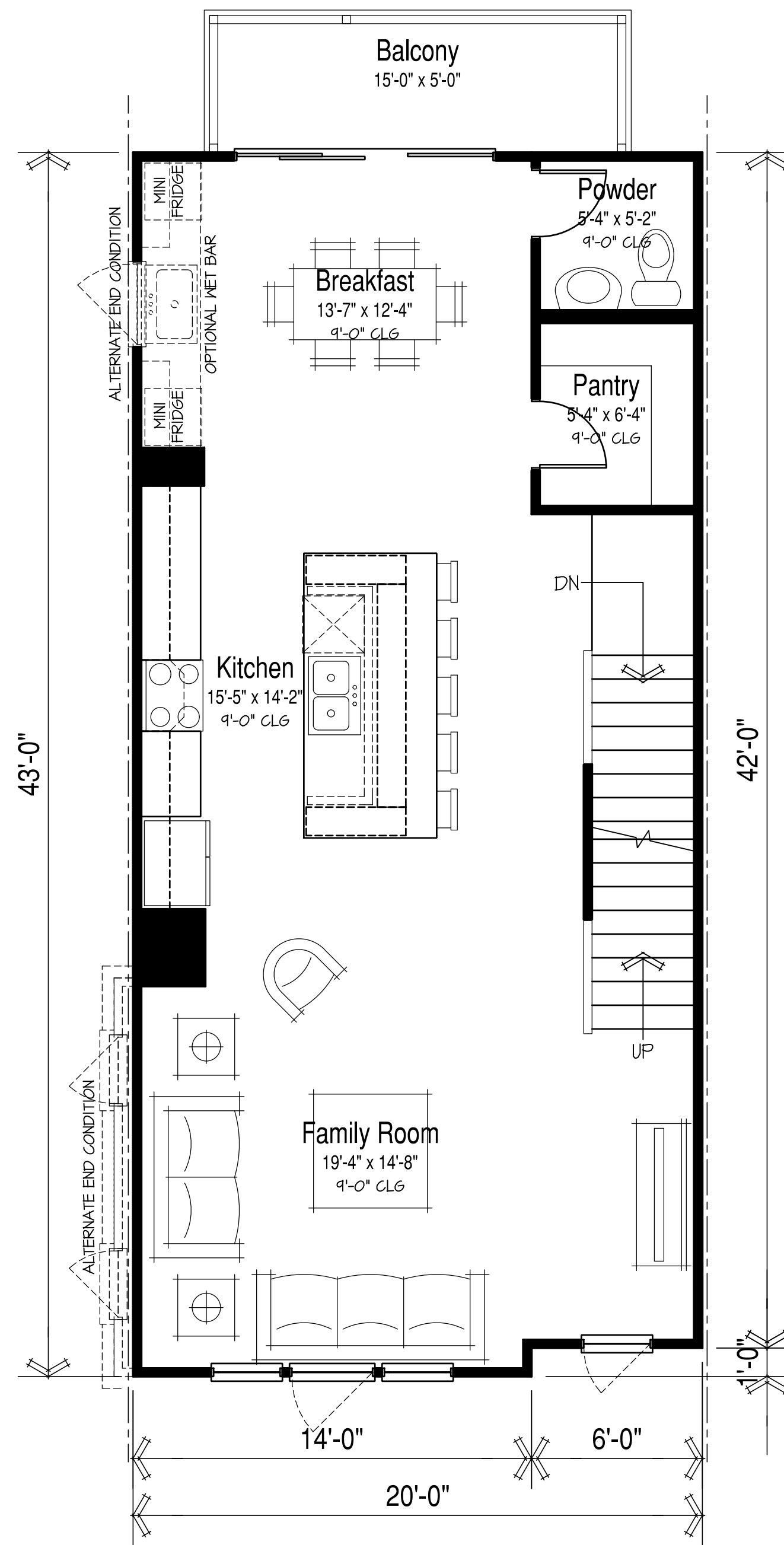
M/I Homes of Chicago, LLC
 Naperville, IL

Unit 'B' : 2474 S.F.
Preliminary Floor Plan Layouts

NORTHWOODS OF NAPERVILLE

Naperville, Illinois





M/I Homes of Chicago, LLC
 Naperville, IL

Unit 'B' : 2474 S.F.
Preliminary Floor Plan Layouts

NORTHWOODS OF NAPERVILLE

Naperville, Illinois

