

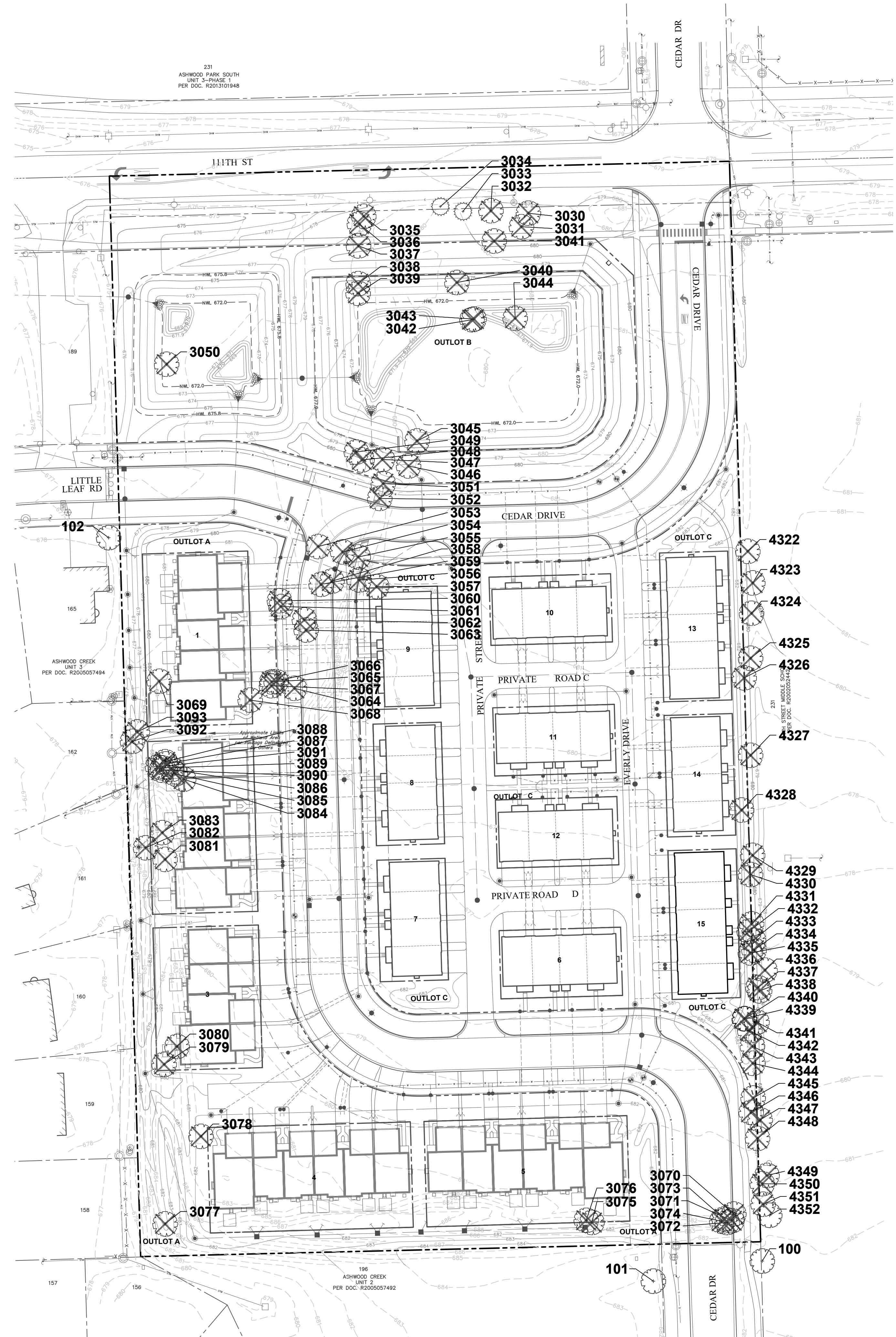


GARY R. WEBER  
ASSOCIATES, INC.  
LAND PLANNING  
ECOLOGICAL CONSULTING  
LANDSCAPE ARCHITECTURE  
212 SOUTH MAIN STREET  
WHEATON, ILLINOIS 60187  
PHONE: 630-668-7197

CLIENT:  
**JMRV  
NAPERVILLE LLC**  
445 JACKSON AVENUE  
SUITE 200  
NAPERVILLE, ILLINOIS 60540

CIVIL ENGINEER:  
**CEMCON, LTD.**  
2280 WHITE OAK CIRCLE  
SUITE 100  
AURORA, IL 60502

**EVERLY TRACE**  
NAPERVILLE, ILLINOIS  
**TREE PRESERVATION PLAN**

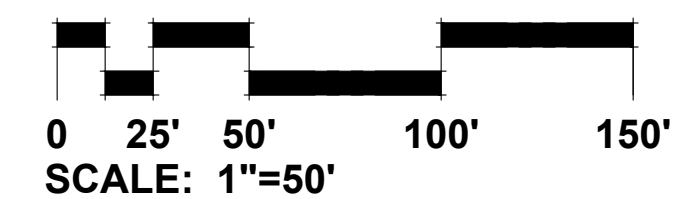


NO.	DATE
03	04.08.2026
02	03.17.2026
01	03.06.2026

REVISIONS

DATE 12.18.2025  
PROJECT NO. BS2406  
DRAWN JJK / SMR  
CHECKED DHS  
SHEET NO.

**L1.1**



811  
Know what's below.  
Call before you dig.

THE CONTRACTOR SHALL HAVE THE TREE LIMBS PRUNED THAT MIGHT BE DAMAGED BY EQUIPMENT OPERATIONS PRIOR TO CONSTRUCTION COMMENCING.

PROTECTIVE TREE FENCE - TYP

TREE PROTECTION AREA

ONE FOOT FOR EACH ONE INCH OF TREE DIA.  
30" MAX

EARTH SAWCUTTING OF THE TREE ROOTS TO BE PERFORMED AT THE LIMITS OF THE TREE PROTECTION AREA OR AS INDICATED ON THE PLANS (24" MINIMUM DEPTH).

**LEGEND**

TREE TO BE PRESERVED

TREE TO BE REMOVED

**TREE PRESERVATION NOTES**

- Property line shall be located and staked by a professional land surveyor prior to tree removal.
- Tree locations are shown utilizing a Trimble Catalyst GPS which does not constitute a professionally licensed survey. If survey-grade location and elevation of tagged trees is desired, a professional surveyor should be engaged.
- 48" high snow fence or wood barriers shall extend to the dripline of the tree or tree mass whenever possible, shall be installed before construction begins, and should not be removed until the completion of construction.
- Contractor shall take extreme care to protect the root system of existing trees. Should root pruning be necessary it shall not exceed 25% of the tree's root system and shall be done in accordance with recognized horticulture practices under the supervision of a professional arborists, Landscape Architect or Horticulturist.
- All accidental damage to existing trees that are to be preserved shall be promptly treated as required in accordance with recognized horticultural practices and the instructions of the professional Arborist, Landscape Architect or Horticulturist.
- Broken or badly bruised branches shall be removed with a clean cut. If recommended by the professional Arborist, Landscape Architect or Horticulturist.
- Care shall be exercised by the contractors to protect all overhead limbs and branches from damage by contact with material, machinery or equipment and by damage from engine exhaust.
- Contractors shall protect trees and vegetation against spills or discharge of fuels, lubricating oils, hydraulic fluids, anti-freeze and coolants, calcium chloride, lime and all other similar hydrocarbons, organic chemicals, and other materials which can be harmful.
- When underground utilities are proposed within 5' of a preserved tree trunk, they must be augered if possible.

City of Naperville  
**STANDARD  
DETAIL**

REVISED: 08/01/2018

**TREE PROTECTION**

SHEET 1 OF 1

LANDSCAPE 10  
**790.10**

**TREE PRESERVATION DETAIL**

SCALE: NTS  
SEE NOTES

**TREE INVENTORY**  
 Everly Trace  
 Bridge Street Properties, LLC - BS2406  
 January 16, 2025 & February 27, 2025

**RATING AND SURVEY CRITERIA**

- 1) Trees measured at 4.5 ft. above the ground - DBH (diameter Breast Height)
- 2) All trees 4" DBH and above tagged. Dead trees and invasive shrubs were not tagged.
- 3) Health Rating:

Rating	Description	Criteria
1	Excellent	Less than 10% dead wood, typical growth for species, no observed defects
2	Good	Less than 20% dead wood, minor defects, sound structure, no decay
3	Fair	Less than 30% dead wood, minor crown die-back, minor trunk damage or cavities
4	Fair to Poor	Approximately 30-50% dead wood, lacking full crown, minor disease evidence, trunk damage
5	Poor	Over 50% dead wood, lacking full crown, disease or decay evident, structural damage/cavities
6	Dead	Less than 10% living wood, greater than 50% missing bark, adventitious growth only, decay

TOTAL TREE COUNT: 98 (100-102 (untagged), 3030-3093, & 4322-4352)

TAG NO.	SCIENTIFIC NAME	COMMON NAME	DBH (Inches)	CONDITION	STRUCTURE	HEALTH	PROPOSED ACTION
100	Morus alba	White Mulberry	20,17,11,6	3- Fair			Offsite - Preserve
101	Gleditsia triacanthos	Honey Locust	19	2- Good			Offsite - Preserve
102	Tilia cordata	Littleleaf Linden	7	3- Fair			Offsite - Preserve
3030	Acer saccharum	Sugar Maple	35	5- Poor	Double Leader Split Risk Fused Leaders Crown Lean	Fungus-Stem	Remove
3031	Acer saccharum	Sugar Maple	58	5- Poor	Split Risk Fused Leaders Crown Lean	Dead Leader Wood rot Cavity	Remove
3032	Tilia americana	American Basswood	49	4- Fair/Poor	Fused Leaders		Remove
3033	Pinus nigra	Austrian Pine	32	2- Good		20% dead wood	Preserve
3034	Pinus nigra	Austrian Pine	30	4- Fair/Poor		Cavity	Preserve
3035	Morus alba	White Mulberry	23,18,12	4- Fair/Poor	Multi Leader Split Risk Crown Lean	20% dead wood Dead Leader	Remove
3036	Morus alba	White Mulberry	28,22,18,9	4- Fair/Poor	Multi Leader Split Risk Crown Lean	20% dead wood	Remove
3037	Morus alba	White Mulberry	17,13	5- Poor	V-shaped joint Double Leader Split Risk Crown Lean Crowded		Remove
3038	Morus alba	White Mulberry	18	5- Poor	Crown Lean Crowded Broken Limb growing in fence		Remove
3039	Celtis occidentalis	Hackberry	25,20	4- Fair/Poor	V-shaped joint Double Leader Split Risk Crown Lean		Remove
3040	Betula papyrifera	White Birch	24	5- Poor		30% dead wood Dead Leader Cavity	Remove
3041	Acer saccharum	Sugar Maple	29	3- Fair		20% dead wood	Remove
3042	Morus alba	White Mulberry	18	4- Fair/Poor	Lean Crown Lean Crowded		Remove
3043	Morus alba	White Mulberry	19	4- Fair/Poor	Lean Crown Lean Crowded		Remove
3044	Morus alba	White Mulberry	11	4- Fair/Poor	Lean Crown Lean Crowded	Trunk Scar	Remove
3045	Acer saccharinum	Silver Maple	45,31	4- Fair/Poor	V-shaped joint Multi Leader Split Risk Fused Leaders	Trunk Scar	Remove
3046	Morus alba	White Mulberry	19,10,7,21,16	5- Poor	V-shaped joint Multi Leader Split Risk Leaders	Dead Leader Wood rot Cavity	Remove
3047	Ulmus americana	American Elm	12	3- Fair	Crown Lean Crowded		Remove
3048	Acer saccharinum	Silver Maple	17,16,15,11,9	5- Poor	V-shaped joint Multi Leader Split Risk		Remove
3049	Morus alba	White Mulberry	16,10,10	4- Fair/Poor	Strong lean Crown Lean	30% dead wood	Remove
3050	Morus alba	White Mulberry	11,10,7,5	5- Poor	V-shaped joint Multi Leader Split Risk Strong lean		Remove
3051	Acer saccharinum	Silver Maple	10,8,5,5	4- Fair/Poor	Multi Leader	Dead Leader Wood rot Cavity	Remove
3052	Acer saccharinum	Silver Maple	10,8,8,8,8,8	5- Poor	V-shaped joint Multi Leader Split Risk	Dead Leader Wood rot	Remove
3053	Acer negundo	Box Elder	11	3- Fair	Lean Crown Lean		Remove
3054	Acer saccharinum	Silver Maple	15	2- Good	Unbalanced	10% dead wood	Remove
3055	Acer saccharinum	Silver Maple	7	3- Fair	Lean Crown Lean		Remove
3056	Populus deltoides	Eastern Cottonwood	25	3- Fair	Crown Lean		Remove
3057	Acer saccharinum	Silver Maple	4	3- Fair	Lean Crown Lean Crowded		Remove
3058	Acer saccharinum	Silver Maple	8	4- Fair/Poor	Crown Lean Crowded		Remove
3059	Acer saccharinum	Silver Maple	12	4- Fair/Poor	Crown Lean		Remove
3060	Acer saccharinum	Silver Maple	32	5- Poor	Crown Lean	Dead Leader Wood rot Cavity	Remove
3061	Celtis occidentalis	Hackberry	11	3- Fair	Crown Lean Crowded		Remove
3062	Celtis occidentalis	Hackberry	10	4- Fair/Poor	Unbalanced Crown Lean		Remove
3063	Celtis occidentalis	Hackberry	13	3- Fair	Lean Crown Lean		Remove
3064	Salix nigra	Black Willow	20,17	4- Fair/Poor	V-shaped joint U-shaped joint Double Leader Strong lean Crown Lean		Remove
3065	Acer saccharinum	Silver Maple	8,4	3- Fair	U-shaped joint Double Leader Lean Crown Lean		Remove
3066	Acer saccharinum	Silver Maple	12,10,8,7	4- Fair/Poor	V-shaped joint Multi Leader Split Risk Lean		Remove
3067	Salix nigra	Black Willow	18,13,11,11	5- Poor	V-shaped joint Multi Leader Split Risk Strong lean	20% dead wood	Remove
3068	Salix nigra	Black Willow	12,3	4- Fair/Poor	Split Risk Lean Crown Lean		Remove
3069	Salix nigra	Black Willow	14	5- Poor	Multi Leader Split Risk Strong lean Crown Lean		Remove
3070	Acer negundo	Box Elder	13,7	4- Fair/Poor	V-shaped joint Double Leader Lean		Remove
3071	Acer negundo	Box Elder	5	5- Poor	Strong lean Broken Leader	Trunk Scar	Remove
3072	Acer negundo	Box Elder	8	4- Fair/Poor	Strong lean Crown Lean Broken Limb		Remove
3073	Acer negundo	Box Elder	8,7	4- Fair/Poor	U-shaped joint Double Leader Strong lean		Remove
3074	Acer negundo	Box Elder	7	5- Poor	Broken Leader resprouts only		Remove
3075	Ailanthus altissima	Tree of Heaven	14	4- Fair/Poor	Crowded	Trunk Damage	Remove
3076	Ailanthus altissima	Tree of Heaven	10,8,7,5	5- Poor	V-shaped joint Multi Leader Split Risk Broken Leader		Remove
3077	Acer x freemanii	Freeman Maple	6	3- Fair			Remove
3078	Pyrus calleryana	Pear	6,4	4- Fair/Poor	V-shaped joint Multi Leader Split Risk		Remove
3079	Celtis occidentalis	Hackberry	4	3- Fair	Lean		Remove
3080	Celtis occidentalis	Hackberry	4	4- Fair/Poor			Remove
3081	Celtis occidentalis	Hackberry	5	3- Fair			Remove
3082	Celtis occidentalis	Hackberry	5	3- Fair			Remove
3083	Celtis occidentalis	Hackberry	6	3- Fair			Remove
3084	Salix nigra	Black Willow	14,11,10	4- Fair/Poor	V-shaped joint Multi Leader Split Risk		Remove
3085	Salix nigra	Black Willow	6	4- Fair/Poor	Strong lean Crown Lean		Remove
3086	Salix nigra	Black Willow	7	5- Poor	Horizontal Growth		Remove
3087	Salix nigra	Black Willow	7	3- Fair	Lean Crown Lean		Remove
3088	Salix nigra	Black Willow	8,8,7	4- Fair/Poor	V-shaped joint Multi Leader Split Risk		Remove
3089	Salix nigra	Black Willow	8	3- Fair	Lean Crown Lean		Remove
3090	Salix nigra	Black Willow	7	4- Fair/Poor	Strong lean Crown Lean		Remove
3091	Salix nigra	Black Willow	11,10,11	4- Fair/Poor	U-shaped joint Multi Leader Strong lean Crown Lean		Remove
3092	Pyrus calleryana	Pear	8,7,5	5- Poor	V-shaped joint Multi Leader Split Risk		Remove
3093	Pyrus calleryana	Pear	7,6,6	5- Poor	V-shaped joint Multi Leader Split Risk	Cavity	Remove
4322	Pyrus calleryana	Pear	8	3- Fair	V-shaped joint Double Leader		Offsite - Remove
4323	Acer tataricum	Amur maple	4,4,3,3,3	5- Poor	V-shaped joint Multi Leader Split Risk	40% dead wood	Offsite - Remove
4324	Acer tataricum	Amur maple	6,5,5,4,3,2,2	5- Poor	V-shaped joint Multi Leader Split Risk	30% dead wood Trunk Scar	Offsite - Remove
4325	Salix nigra	Black Willow	15,8,7	4- Fair/Poor	V-shaped joint Multi Leader Split Risk Strong lean	20% dead wood	Offsite - Remove
4326	Betula nigra	River Birch	8,7,6,3	4- Fair/Poor	V-shaped joint Multi Leader Split Risk		Remove
4327	Salix nigra	Black Willow	17,12,7	5- Poor	V-shaped joint Multi Leader Split Risk Strong lean Broken Limb Broken	Dead Leader	Offsite - Remove
4328	Unknown	Unknown	14,13,8,7	6- Dead			Remove
4329	Morus alba	White Mulberry	8,5	6- Dead			Offsite - Remove
4330	Unknown	Unknown	19	6- Dead			Remove
4331	Salix nigra	Black Willow	12,11	4- Fair/Poor	V-shaped joint Double Leader Split Risk Lean		Remove
4332	Salix nigra	Black Willow	16	5- Poor	Lean	Dead Leader	Remove
4333	Acer saccharinum	Silver Maple	11,8	3- Fair	Double Leader		Offsite - Remove
4334	Acer saccharinum	Silver Maple	8	3- Fair			Offsite - Remove
4335	Crotaegus sp.	Hawthorn	8,6,4,4	4- Fair/Poor	V-shaped joint Multi Leader Split Risk		Remove
4336	Morus alba	White Mulberry	6	4- Fair/Poor	Strong lean		Offsite - Remove
4337	Celtis occidentalis	Hackberry	25,16	4- Fair/Poor	V-shaped joint Double Leader Split Risk		Offsite - Remove
4338	Morus alba	White Mulberry	6,5	4- Fair/Poor	V-shaped joint Double Leader Split Risk		Offsite - Remove
4339	Salix nigra	Black Willow	7	4- Fair/Poor	Strong lean Crown Lean Crowded		Remove
4340	Salix nigra	Black Willow	11,10,9,7,7	4- Fair/Poor	V-shaped joint Multi Leader Split Risk		Remove
4341	Acer saccharinum	Silver Maple	7	3- Fair	Lean		Offsite - Remove
4342	Quercus bicolor	Swamp White Oak	11	3- Fair			Remove
4343	Acer tataricum	Amur maple	9	3- Fair	Crown Lean Crowded	30% dead wood Trunk Scar	Remove
4344	Gleditsia triacanthos	Honey Locust	16	2- Good			Remove
4345	Quercus palustris	Pin Oak	11,11	3- Fair	V-shaped joint Multi Leader Split Risk		Remove
4346	Salix nigra	Black Willow	7	4- Fair/Poor	Strong lean Crown Lean Horizontal Growth		Remove
4347	Prunus serotina	Black Cherry	13	3- Fair	Unbalanced		Offsite - Remove
4348	Acer negundo	Box Elder	20	4- Fair/Poor	Lean Crown Lean poor form	Cavity	Remove
4349	Pyrus calleryana	Pear	5	3- Fair			Offsite - Remove
4350	Acer tataricum	Amur maple	6,6,4,2,2	5- Poor	V-shaped joint Multi Leader Split Risk	Fungus-Stem Cavity Trunk Scar	Offsite - Remove
4351	Acer tataricum	Amur maple	14	3- Fair			Offsite - Remove
4352	Pyrus calleryana	Pear	12	3- Fair			Offsite - Preserve



GARY R. WEBER  
 ASSOCIATES, INC.  
 LAND PLANNING  
 ECOLOGICAL CONSULTING  
 LANDSCAPE ARCHITECTURE  
 212 SOUTH MAIN STREET  
 WHEATON, ILLINOIS 60187  
 PHONE: 630-668-7197

CLIENT:  
**JMRV**  
**NAPERVILLE LLC**  
 445 JACKSON AVENUE  
 SUITE 200  
 NAPERVILLE, ILLINOIS 60540

CIVIL ENGINEER:  
**CEMCON, LTD.**  
 2280 WHITE OAK CIRCLE  
 SUITE 100  
 AURORA, IL 60502

**EVERLY TRACE**  
 NAPERVILLE, ILLINOIS  
**TREE INVENTORY**

03	04.08.2026
02	03.17.2026
01	03.06.2026

**REVISIONS**

DATE 12.18.2025  
 PROJECT NO. BS2406  
 DRAWN JJK / SMR  
 CHECKED DHS  
 SHEET NO.



**L1.2**