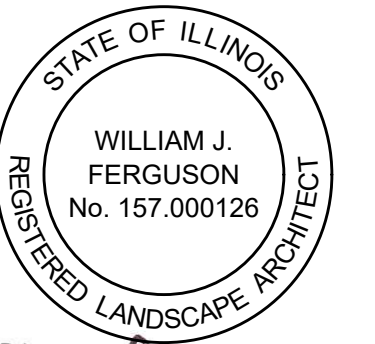


**DANIEL WEINBACH
&
PARTNERS, LTD.**

Landscape Architects

1142 W. Madison Street
Suite 206
Chicago, IL 60607

312 427-2888



William J. Ferguson

Revisions

8.
7.
6.
5.
4. ISSUED FOR APPROVAL 05/24/24
3. ISSUED FOR APPROVAL 04/25/24
2. ISSUED FOR APPROVAL 04/02/24
1. ISSUED FOR APPROVAL 11/09/23

Project

**THE VIEWS OF
NAPERVILLE
CLUBHOUSE**

701 ROYAL ST GEORGE DRIVE
NAPERVILLE, IL 60563

Sheet Title

**TREE
PRESERVATION
AND REMOVAL
PLAN**

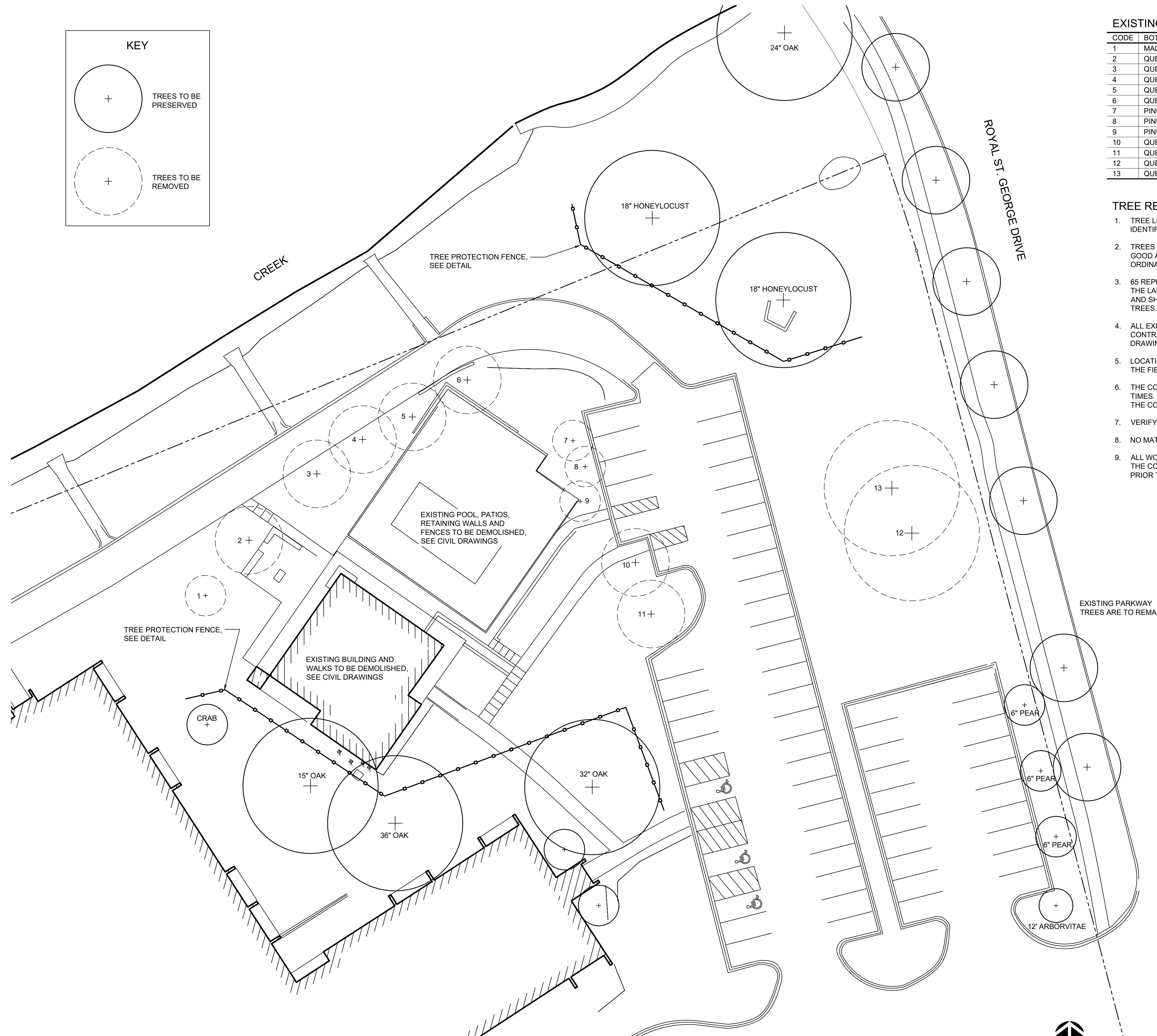
Date 11/02/2023	Project No. DWP 23-102
Scale 1" = 20'-0"	Sheet No. L1.0
Drawn By FERGUSON	
Approved	

EXISTING TREES TO BE REMOVED

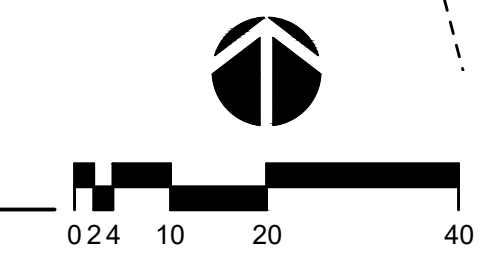
CODE	BOTANICAL NAME	COMMON NAME	SIZE	CONDITION	REPLACEMENT REQUIRED
1	MALUS SPECIES	CRABAPPLE	10" DBH	POOR	0 TREES
2	QUERCUS SPECIES	OAK	12" DBH	GOOD	5 TREES
3	QUERCUS SPECIES	OAK	12" DBH	GOOD	5 TREES
4	QUERCUS SPECIES	OAK	12" DBH	GOOD	5 TREES
5	QUERCUS SPECIES	OAK	12" DBH	GOOD	5 TREES
6	QUERCUS SPECIES	OAK	12" DBH	GOOD	5 TREES
7	PINUS SPECIES	PINE	10" DBH	FAIR	5 TREES
8	PINUS SPECIES	PINE	12" DBH	FAIR	5 TREES
9	PINUS SPECIES	PINE	12" DBH	FAIR	5 TREES
10	QUERCUS SPECIES	OAK	24" DBH	GOOD	9 TREES
11	QUERCUS SPECIES	OAK	18" DBH	GOOD	7 TREES
12	QUERCUS SPECIES	OAK	36" DBH	POOR	0 TREES
13	QUERCUS SPECIES	OAK	24" DBH	GOOD	9 TREES
TOTAL					65 TREES

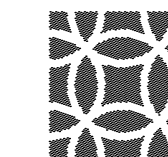
TREE REMOVAL NOTES:

- TREE LOCATIONS AND SIZES WERE PROVIDED BY THE MOST RECENT SITE SURVEY. SPECIES IDENTIFICATION AND CONDITION ARE BY THE LANDSCAPE ARCHITECT.
- TREES IN POOR CONDITION ARE SHOWN TO NOT HAVE ANY REPLACEMENT REQUIREMENTS. TREES IN GOOD AND FAIR CONDITION ARE TO HAVE TREE REPLACEMENT QUANTITIES AS SPECIFIED IN THE CITY'S ORDINANCE.
- 65 REPLACEMENT TREES ARE REQUIRED. THE LANDSCAPE PLAN SHOWS THE ADDITION OF 60 TREES IN THE LANDSCAPE PLAN. ANOTHER 13 TREES WERE INSTALLED ALONG THE CREEK EARLIER THIS YEAR AND SHOULD BE APPLIED TO THE REQUIRED REPLACEMENT QUANTITY, FOR A TOTAL OF 73 REPLACEMENT TREES.
- ALL EXISTING TREE LOCATIONS AND SIZES ARE TO BE VERIFIED IN THE FIELD BY THE CONTRACTOR. THE CONTRACTOR SHALL NOTIFY THE LANDSCAPE ARCHITECT OF ANY DISCREPANCIES BETWEEN THE DRAWINGS AND ACTUAL FIELD CONDITIONS, PRIOR TO THE START OF CONSTRUCTION.
- LOCATION OF TREE PROTECTION FENCE IS REPRESENTATIVE. CONTRACTOR SHALL VERIFY LOCATIONS IN THE FIELD. SEE TREE PROTECTION FENCE DETAIL.
- THE CONTRACTOR SHALL BE RESPONSIBLE FOR MAINTAINING THE FENCE AND KEEPING IT INTACT AT ALL TIMES. ANY TREES DAMAGED DURING CONSTRUCTION SHALL BE REPLACED BY THE CONTRACTOR, AT THE CONTRACTOR'S EXPENSE.
- VERIFY TREES TO BE REMOVED WITH LANDSCAPE ARCHITECT PRIOR TO REMOVING ANY TREES.
- NO MATERIALS OR VEHICLES SHALL BE STORED, DRIVEN OR PARKED WITHIN TREE PROTECTION FENCING.
- ALL WORK SHALL BE IN ACCORDANCE WITH LOCAL MUNICIPALITY STANDARDS, CODES AND ORDINANCES. THE CONTRACTOR IS RESPONSIBLE FOR OBTAINING ALL PERMITS ASSOCIATED WITH TREE REMOVAL, PRIOR TO ANY SITE DEMOLITION.



1 TREE PRESERVATION AND REMOVAL PLAN
SCALE: 1" = 20'-0"





**DANIEL WEINBACH
&
PARTNERS, LTD.**

Landscape Architects

1142 W. Madison Street
Suite 206
Chicago, IL 60607

312 427-2888



Revisions

8.	
7.	
6.	
5.	
4.	ISSUED FOR APPROVAL 05/24/24
3.	ISSUED FOR APPROVAL 04/25/24
2.	ISSUED FOR APPROVAL 04/02/24
1.	ISSUED FOR APPROVAL 11/09/23

Project

**THE VIEWS OF
NAPERVILLE
CLUBHOUSE**

701 ROYAL ST GEORGE DRIVE
NAPERVILLE, IL 60563

Sheet Title

**LANDSCAPE
PLAN**

Date

11/02/2023

Project No.

DWP 23-102

Scale

1" = 20'-0"

Sheet No.

Drawn By

FERGUSON

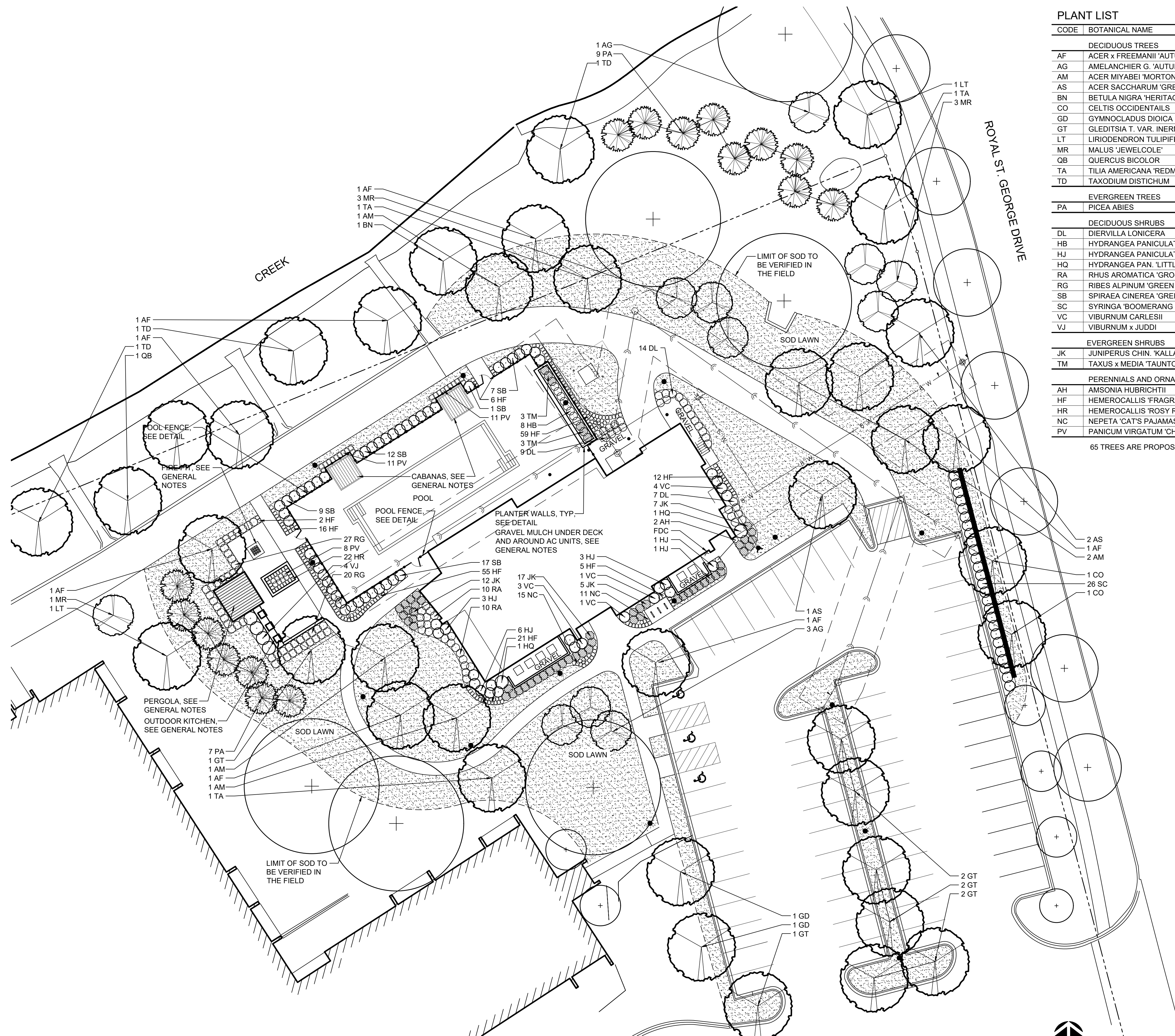
L2.0

Approved

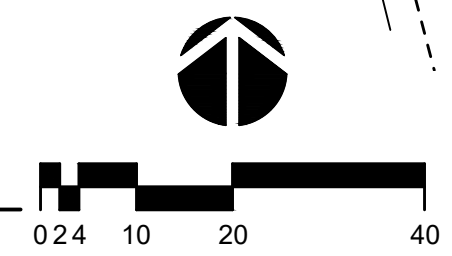
PLANT LIST

CODE	BOTANICAL NAME	COMMON NAME	SIZE	QTY	ADDITIONAL NOTES
DECIDUOUS TREES					
AF	ACER x FREEMANI 'AUTUMN FANTASY'	AUTUMN FANTASY MAPLE	2 1/2" CALIPER	7	BRANCHED UP 6'
AG	AMELANCHIER G. 'AUTUMN BRILLIANCE'	AUTUMN BRILLIANCE SERVICEBERRY	2 1/2" CALIPER	4	BRANCHED UP 4'
AM	ACER MIYABEI 'MORTON'	STATE STREET MAPLE	2 1/2" CALIPER	5	BRANCHED UP 6'
AS	ACER SACCHARUM 'GREEN MOUNTAIN'	GREEN MOUNTAIN SUGAR MAPLE	2 1/2" CALIPER	3	BRANCHED UP 6'
BN	BETULA NIGRA 'HERITAGE'	HERITAGE RIVER BIRCH	12' HT x 8" W	1	BRANCHED UP 6'
CO	CELTIS OCCIDENTALIS	COMMON HACKBERRY	2 1/2" CALIPER	2	BRANCHED UP 6'
GD	GYMNOCLADUS DIOICA 'ESPRESSO'	ESPRESSO KEN. COFFEETREE	2 1/2" CALIPER	3	BRANCHED UP 6'
GT	GLEDITSIA T. VAR. 'INERMIS 'SKYCOLE'	SKYLINE HONEYLOCUST	2 1/2" CALIPER	8	BRANCHED UP 6'
LT	LIRIODENDRON TULIPIFERA	TULIPTREE	2 1/2" CALIPER	2	BRANCHED UP 6'
MR	MALUS 'JEWELCOLE'	RED JEWEL CRABAPPLE	2 1/2" CALIPER	7	BRANCHED UP 4'
QB	QUERCUS BICOLOR	SWAMP WHITE OAK	2 1/2" CALIPER	1	BRANCHED UP 6'
TA	TILIA AMERICANA 'REDMOND'	REDMOND LINDEN	2 1/2" CALIPER	3	BRANCHED UP 6'
TD	TAXODIUM DISTICHUM	COMMON BALDCYPRESS	2 1/2" CALIPER	3	BRANCHED UP 6'
EVERGREEN TREES					
PA	PICEA ABIES	NORWAY SPRUCE	8' HT x 5" W	16	
DECIDUOUS SHRUBS					
DL	DIERVILLA LONICERA	DWARF BUSH HONEYSUCKLE	18" HT x 18" W	30	
HB	HYDRANGEA PANICULATA 'ILVOBO'	BOBO HYDRANGEA	18" HT x 18" W	8	
HJ	HYDRANGEA PANICULATA 'JANE'	LITTLE LIME HYDRANGEA	24" HT x 24" W	14	
HQ	HYDRANGEA PAN. 'LITTLE QUICK FIRE'	LITTLE QUICK FIRE HYDRANGEA	36" HT x 36" W	2	
RA	RHUS AROMATICA 'GRO-LOW'	GRO-LOW SUMAC	18" HT x 18" W	20	
RG	RIBES ALPINUM 'GREEN MOUND'	GREEN MOUND CURRANT	18" HT x 18" W	47	
SB	SPIRAEA CINEREA 'GREFSHEIM'	GREFSHEIM SPIREA	24" HT x 24" W	26	
SC	SYRINGA 'BOOMERANG DWARF PURPLE'	BOOMERANG DW. PURPLE LILAC	30" HT x 30" W	46	
VC	VIBURNUM CARLESII	KOREANSPICE VIBURNUM	30" HT x 30" W	9	
VJ	VIBURNUM x JUDDI	JUDD VIBURNUM	36" HT x 36" W	4	
EVERGREEN SHRUBS					
JK	JUNIPERUS CHIN. 'KALLAY COMPACTA'	KALLAYS COMPACT JUNIPER	12" HT x 24" W	56	
TM	TAXUS x MEDIA 'TAUNTONI'	TAUNTON DENSE YEWE	18" HT x 18" W	6	
PERENNIALS AND ORNAMENTAL GRASSES					
AH	AMSONIA HUBRICHII	NARROW LEAF BLUESTAR	1 GALLON	2	MAX 24" SPACING
HF	HEMEROCALLIS 'FRAGRANT RETURNS'	FRAGRANT RETURNS DAYLILY	1 GALLON	176	MAX 18" SPACING
HR	HEMEROCALLIS 'ROSY RETURNS'	ROSY RETURNS DAYLILY	1 GALLON	22	MAX 18" SPACING
NC	NEPETA 'CAT'S PAJAMAS'	CAT'S PAJAMAS CATMINT	1 GALLON	26	MAX 18" SPACING
PV	PANICUM VIRGATUM 'CHEYENNE SKY'	CHEYENNE SKY SWITCH GRASS	1 GALLON	30	MAX 24" SPACING

65 TREES ARE PROPOSED



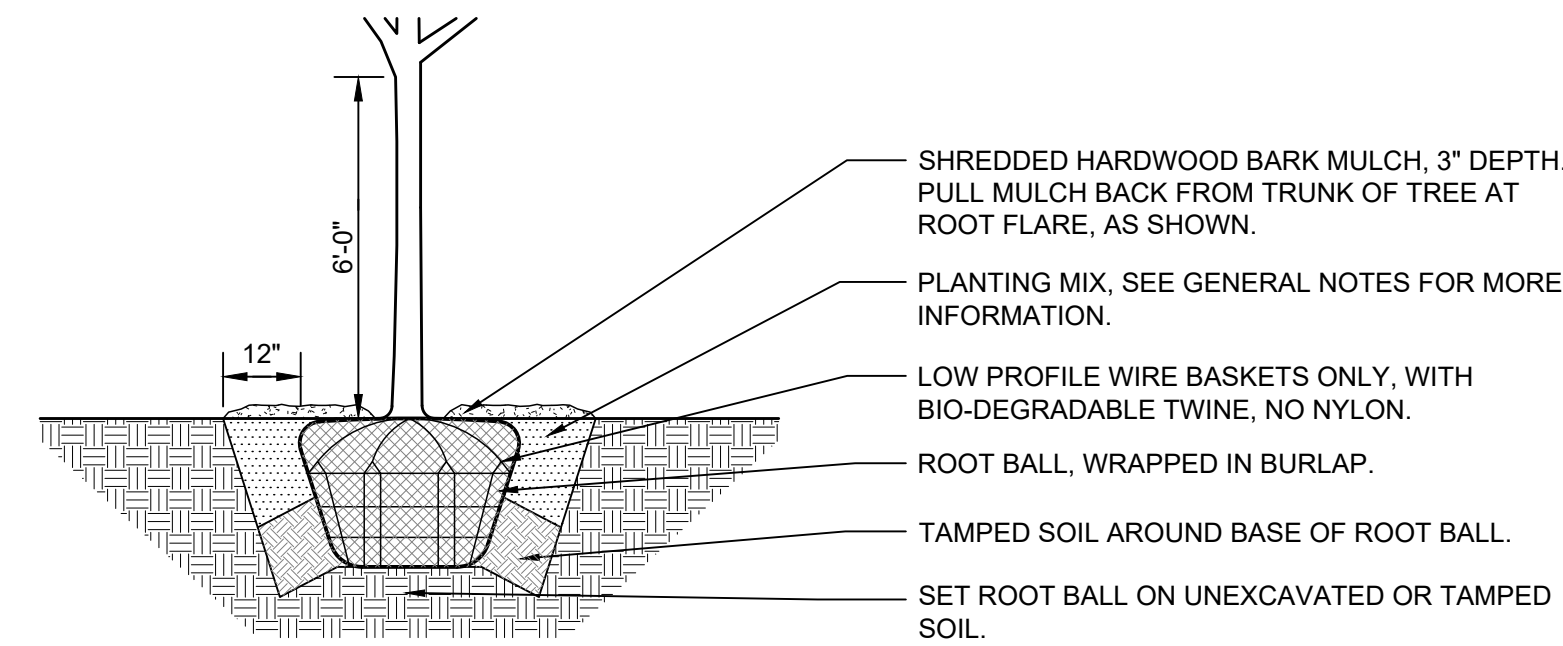
1 LANDSCAPE PLAN
SCALE: 1" = 20'-0"



GENERAL NOTES

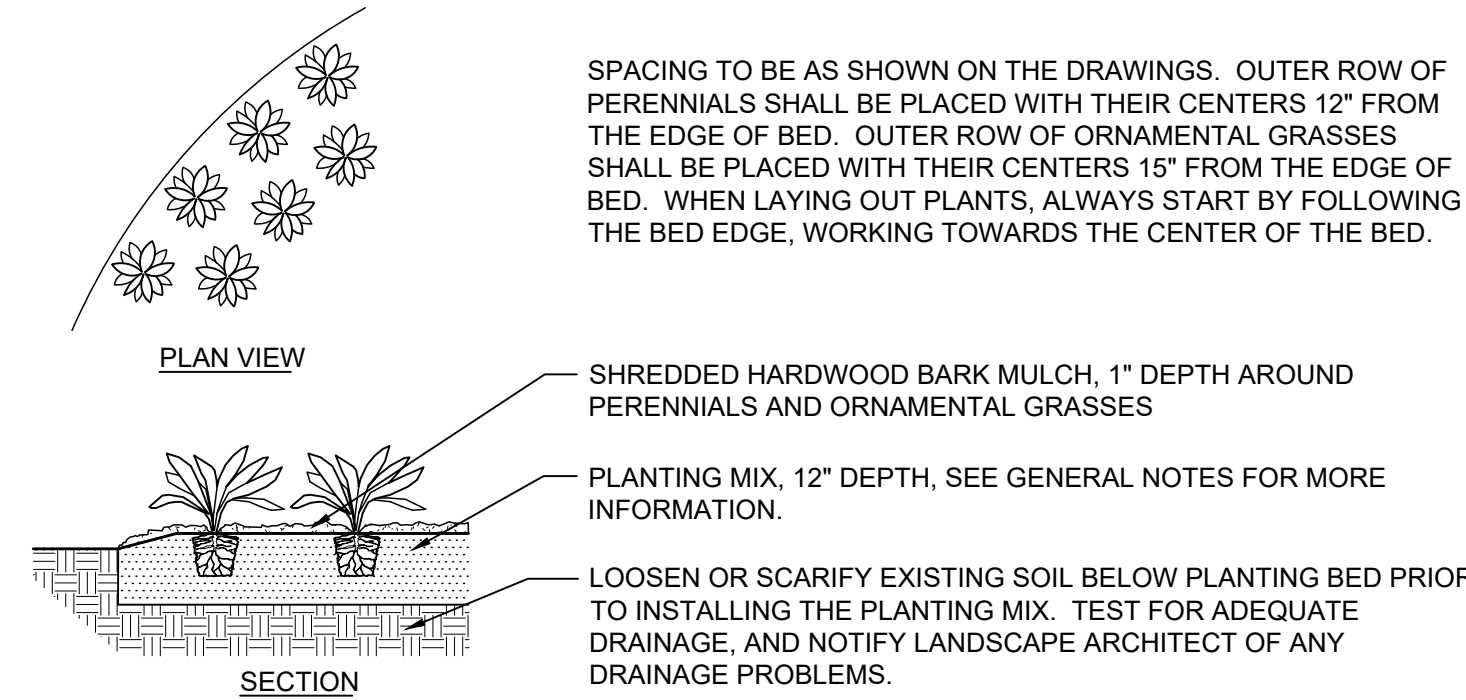
- ALL DIMENSIONS AND SITE CONDITIONS ARE TO BE VERIFIED IN THE FIELD BY THE CONTRACTOR. NOTIFY THE LANDSCAPE ARCHITECT OF ANY DISCREPANCIES PRIOR TO STARTING WORK. SITE PLAN, ARCHITECTURE PLAN AND SITE SURVEY WERE PROVIDED BY OTHERS.
- THE CONTRACTOR SHALL HAVE A MINIMUM OF FIVE YEARS EXPERIENCE WITH PROJECTS OF SIMILAR SIZE AND TYPE. CONTRACTOR SHALL BE RESPONSIBLE FOR OBTAINING ALL REQUIRED PERMITS.
- CABANAS ARE TO BE 10'x10' SOMBRERO CANOPIES BY MAMAGREEN WITH TEAK TRELLIS ROOF, OR APPROVED EQUAL. CONTRACTOR TO SUBMIT MANUFACTURER'S SHOP DRAWINGS FOR APPROVAL.
- PERGOLA TO BE 12'x12' SOMBRERO CANOPY BY MAMAGREEN WITH TEAK TRELLIS ROOF, OR APPROVED EQUAL. CONTRACTOR TO SUBMIT MANUFACTURER'S SHOP DRAWINGS FOR APPROVAL.
- FIRE PIT TO BE NATURAL GAS FIRE PIT WITH AUTOMATIC IGNITION. A TIMER AND AN AUTOMATIC GAS SHUT-OFF. FIRE PIT TO MEET ALL CITY CODES AND REQUIREMENTS.
- OUTDOOR KITCHEN TO BE CONSTRUCTED OF LINEO BUILDING BLOCKS FROM UNILOCK, TO MATCH THE PLANTER WALLS. KITCHEN TO INCLUDE THREE NATURAL GAS GRILLS WITH AUTOMATIC IGNITION. KITCHEN COUNTERTOP TO BE 3 CM GRANITE. COLORS AND GRILL MODELS TO BE DETERMINED. GRILLS TO MEET ALL CITY CODES AND REQUIREMENTS.
- SPECIES AND SIZES OF PLANTS LISTED IN THE PLANT LIST ARE SUBJECT TO AVAILABILITY AT TIME OF INSTALLATION. IF SUBSTITUTIONS ARE REQUIRED, THE CONTRACTOR SHALL SUBMIT REQUESTS TO THE LANDSCAPE ARCHITECT FOR APPROVAL.
- QUANTITIES SHOWN ON THE DRAWING AND IN THE PLANT LIST ARE PROVIDED ONLY FOR THE CONTRACTOR'S CONVENIENCE. THE CONTRACTOR SHALL VERIFY ALL PLANT QUANTITIES ON THE DRAWINGS AND NOTIFY THE LANDSCAPE ARCHITECT OF ANY DISCREPANCIES PRIOR TO INSTALLATION. THE CONTRACTOR IS RESPONSIBLE FOR INSTALLING ALL PLANTS PER THE PLANT SYMBOLS SHOWN ON THE DRAWINGS.
- ALL OVERHEAD AND UNDERGROUND UTILITIES ARE TO BE LOCATED PRIOR TO DIGGING OR EXCAVATION. IF UTILITIES OR OTHER OBSTRUCTIONS ARE DISCOVERED TO CONFLICT WITH GRADING, PLANT OR MATERIALS PLACEMENT, NOTIFY THE LANDSCAPE ARCHITECT SO THAT ADJUSTMENTS MAY BE MADE PRIOR TO PROCEEDING.
- CONTRACTOR SHALL TAKE ALL PRECAUTIONS TO PROTECT EXISTING PLANTS, LAWN AREA, FENCES, SITE FEATURES AND PAVING TO REMAIN. ANY DAMAGE TO THESE EXISTING AREAS OR FEATURES SHALL BE REPLACED BY THE CONTRACTOR AT THEIR EXPENSE. DAMAGED LAWN AREAS SHALL BE TILLED, RE-GRADED, TOPSOIL ADDED AS NEEDED AND BE RESTORED WITH SOD.
- PROVIDE POSITIVE DRAINAGE AT ALL TIMES. DO NOT OBSTRUCT THE NATURAL OR ENGINEERED DRAINAGE FLOW PATTERN. NOTIFY THE LANDSCAPE ARCHITECT OF ANY DRAINAGE CONCERNS.
- IMPORTED TOPSOIL FOR THIS PROJECT SHALL BE FRIABLE LOAM OR SANDY LOAM, COMPRISED OF BETWEEN 20% AND 50% SILT, 10% AND 25% CLAY, AND 30% AND 60% SAND. THE PH LEVEL SHALL BE BETWEEN 6.0 AND 7.2 AND THE ORGANIC MATTER CONTENT SHALL BE BETWEEN 3% AND 8%. TOPSOIL SHALL BE FREE OF SEEDS, STONES, LARGE CLUMPS, ROOTS, LEAVES AND DEBRIS, AND SHALL NOT BE DELIVERED WHILE IN A FROZEN OR MUDDY CONDITION. CONTRACTOR SHALL PROVIDE A RECENT SOIL TEST ANALYSIS FOR ALL SOIL TO BE USED. THE ANALYSIS MUST INCLUDE THE INFORMATION REQUIRED ABOVE. IF TESTED TOPSOIL REQUIRES AMENDMENTS TO COMPLY WITH REQUIREMENTS, CONTRACTOR SHALL AMEND THE TOPSOIL, RE-TEST AND RESUBMIT THE ANALYSIS FOR APPROVAL PRIOR TO BRINGING THE TOPSOIL ON SITE.
- EXISTING TOPSOIL FROM ON SITE THAT HAS BEEN STOCKPILED MAY BE USED IF IT MEETS THE REQUIREMENTS FOR IMPORTED TOPSOIL. THIS INCLUDES CONDUCTING SOIL TEST ANALYSIS' AND ADDING AMENDMENTS AS NEEDED SO THAT THE SOIL COMPLIES WITH THE REQUIREMENTS.
- SOD SHALL BE A TALL FESCUE BLEND SOD, SUCH AS BLACK BEAUTY OR APPROVED EQUAL. BLUEGRASS BLEND SOD IS NOT ACCEPTABLE, UNLESS APPROVED BY THE LANDSCAPE ARCHITECT.
- ALL PLANT MATERIAL MUST BE SPECIMEN QUALITY, TRUE TO SPECIES AND VARIETY, WITH FULL, DENSE AND HEALTHY FORMS. PLANTS THAT ARE NOT SPECIMEN QUALITY WILL NOT BE ACCEPTED. ALL PLANTS MUST HAVE BEEN LOCALLY GROWN AT A STATE INSPECTED AND CERTIFIED NURSERY, LOCATED WITHIN 50 MILES OF THE PROJECT SITE. PROVIDE STATE CERTIFICATION FOR EACH NURSERY USED.
- ALL TREES ARE TO HAVE FRESHLY DUG, BALLED AND BURLAPPED ROOT BALLS WITH SIZES THAT MEET THE STANDARDS OF THE AMERICAN NURSERYMEN'S ASSOCIATION. DECIDUOUS AND EVERGREEN SHRUBS MAY EITHER HAVE FRESHLY DUG, BALLED AND BURLAPPED ROOT BALLS OR MAY BE CONTAINER GROWN. ALL PERENNIALS, ORNAMENTAL GRASSES AND GROUNDCOVERS MUST BE CONTAINER GROWN. CONTAINER GROWN MATERIALS SHALL HAVE BEEN GROWN IN THEIR CURRENT CONTAINER FOR A PERIOD OF NO LESS THAN SIX MONTHS.
- ALL TREES SHALL BE INSPECTED BY THE LANDSCAPE ARCHITECT, AT THE NURSERY, PRIOR TO DIGGING. TREES THAT ARE ACCEPTABLE WILL BE SEALED. ALL SEALS APPLIED BY THE LANDSCAPE ARCHITECT MUST REMAIN ON THE TREES AND ARE NOT TO BE REMOVED BY THE CONTRACTOR. ALL TREES MUST HAVE SEALS IN PLACE AT TIME OF ACCEPTANCE OR WILL BE AUTOMATICALLY REJECTED. HEELED-IN TREES WILL NOT BE ACCEPTED WITHOUT PRIOR APPROVAL FROM THE LANDSCAPE ARCHITECT.
- TREES SPECIES SUCH AS BETULA, CELTIS, CERCIS, CRATAEGUS, FAGUS, LIRIODENDRON, PLATANUS, POPULUS, PRUNUS, PYRUS, QUERCUS AND TAXODIUM ARE CONSIDERED 'SPRING DIG ONLY' TREES. THE CONTRACTOR MUST HAVE THESE TREES ORDERED, ACCEPTED AND DUG IN EARLY SPRING, FOR SUMMER AND FALL LANDSCAPE INSTALLATIONS.
- ALL SHRUBS 36" HEIGHT OR TALLER ARE TO BE APPROVED BY THE LANDSCAPE ARCHITECT PRIOR TO INSTALLATION. AN EXAMPLE SHRUB MAY BE TAGGED OR PICTURES MAY BE SUBMITTED FOR APPROVAL. ALL SHRUBS THAT DO NOT MATCH THE APPROVED EXAMPLE SHRUB IN SIZE AND FORM, WILL BE REJECTED. ALL OTHER SHRUBS MUST MEET THE MINIMUM SIZES GIVEN IN THE PLANT LIST AND BE SPECIMEN QUALITY. SHRUBS THAT DO NOT MEET THESE GUIDELINES WILL BE REJECTED.
- PLANT MATERIAL SHALL ONLY BE INSTALLED WITHIN THE FOLLOWING DATES:
 DECIDUOUS TREES AND SHRUBS: APR 1 THROUGH NOV 15
 SPRING DIG DECIDUOUS TREES: APR 1 THROUGH OCT 15
 EVERGREEN TREES AND SHRUBS: APR 1 THROUGH NOV 1
 PERENNIALS AND GROUNDCOVERS: MAY 1 THROUGH OCT 15.
- THE LOCATION FOR ALL TREES AND SHRUBS ON SITE ARE TO BE APPROVED BY THE LANDSCAPE ARCHITECT PRIOR TO INSTALLATION. CONTRACTOR SHALL REQUEST LANDSCAPE ARCHITECT TO BE ON SITE AT LEAST THREE DAYS PRIOR TO INSTALLATION.
- TEST TREE PITS AND PLANT BEDS FOR ADEQUATE DRAINAGE. FILL PLANT PIT WITH 12" OF WATER. IF WATER LEVEL DOES NOT DROP A MINIMUM OF ONE INCH PER HOUR, NOTIFY THE LANDSCAPE ARCHITECT OF DRAINAGE ISSUES.
- PLANTING MIX FOR ALL PLANTINGS SHALL BE A BLEND OF 90% APPROVED TOPSOIL AND 10% SOIL AMENDMENT. ACCEPTABLE AMENDMENTS INCLUDE ONE STEP SOIL CONDITIONER OR PM35 PLANTER MIX FROM MIDWEST TRADING, OR APPROVED EQUAL. BLENDING MIX COMPONENTS SHALL BE COMPLETED OUTSIDE OF THE PLANTING PITS, PRIOR TO PLANTING.
- EXCAVATE PARKING LOT ISLANDS AND CURBED PLANTERS TO A DEPTH OF 24". BACKFILL WITH A 12" DEPTH OF TOPSOIL, AND A 12" DEPTH OF PLANTING MIX. BERM PLANTERS AND ISLANDS TO A HEIGHT OF 3" ABOVE TOP OF CURB TO PREVENT PONDING.
- ALL PLANT BEDS ARE TO BE WELL SHAPED 'SPADE CUT' EDGES, 3" DEPTH, IN LINES OR IN CURVES AS SHOWN ON THE DRAWINGS.
- ALL PLANT MATERIAL, INCLUDING SEED OR SOD, SHALL BE MAINTAINED BY THE CONTRACTOR UNTIL 'ACCEPTANCE' IS GRANTED. MAINTENANCE SHALL INCLUDE, WATERING, WEEDING, PRUNING, STRAIGHTENING, SPRAYING, MULCH REPLACEMENT AND MOWING.
- THE CONTRACTOR SHALL REQUEST AN INSPECTION OF LANDSCAPE PLANTING UPON SUBSTANTIAL COMPLETION FOR 'ACCEPTANCE'. REQUEST MUST BE SUBMITTED TO LANDSCAPE ARCHITECT AT LEAST TEN DAYS PRIOR TO ANTICIPATED INSPECTION. UPON INSPECTION THE LANDSCAPE ARCHITECT SHALL PREPARE A PUNCH LIST OF UNACCEPTABLE OR OUTSTANDING ITEMS. AFTER THE ITEMS HAVE BEEN SATISFACTORILY COMPLETED AND REVIEWED, THE LANDSCAPE ARCHITECT WILL RECOMMEND 'ACCEPTANCE'. SOD AND SEED SHALL BE REVIEWED FOR ACCEPTANCE, ONLY AFTER THEY HAVE FULLY ROOTED AND HAVE BEEN MOWED AT LEAST TWICE.
- ALL PLANT MATERIAL SHALL BE GUARANTEED FOR A PERIOD OF ONE YEAR FROM DATE OF 'ACCEPTANCE'. AT OR NEAR THE END OF THE GUARANTEE PERIOD, THE CONTRACTOR SHALL REQUEST AN INSPECTION OF LANDSCAPE PLANTING FOR 'FINAL ACCEPTANCE'. REQUEST MUST BE SUBMITTED TO LANDSCAPE ARCHITECT AT LEAST TEN DAYS PRIOR TO ANTICIPATED INSPECTION. UPON INSPECTION THE LANDSCAPE ARCHITECT SHALL PREPARE A PUNCH LIST OF UNACCEPTABLE ITEMS. AFTER THE ITEMS HAVE BEEN SATISFACTORILY REPLACED OR REPAIRED, REVIEWED AND APPROVED, THE LANDSCAPE ARCHITECT WILL RECOMMEND 'FINAL ACCEPTANCE'.

LOCATE ALL UNDERGROUND UTILITIES PRIOR TO DIGGING. TREE PIT WIDTH TO BE EXTENDED 12" AROUND THE ENTIRE ROOT BALL AS SHOWN IN THE DETAIL BELOW. TEST TREE PIT FOR DRAINAGE PRIOR TO INSTALLING TREE. PRUNE OFF ALL DEAD, BROKEN OR SCARRED BRANCHES, AND SHAPE PRUNE AS DIRECTED BY THE LANDSCAPE ARCHITECT. FOR TREES UP TO 4" CALIPER OR 12' HEIGHT, REMOVE APPROXIMATELY 5% OF THE OVERALL BRANCHING. LOCATE ROOT FLARE IN ROOT BALL AND SET TREE HEIGHT SO THAT ROOT FLARE IS FLUSH WITH FINISH GRADE. WATER IN THE PLANTING MIX THOROUGHLY, WHILE KEEPING THE TREE PLUMB. STRAIGHTEN TREE IF SETTLING OCCURS. UN-TIE AND REMOVE TWINE FROM AROUND ROOT FLARE.



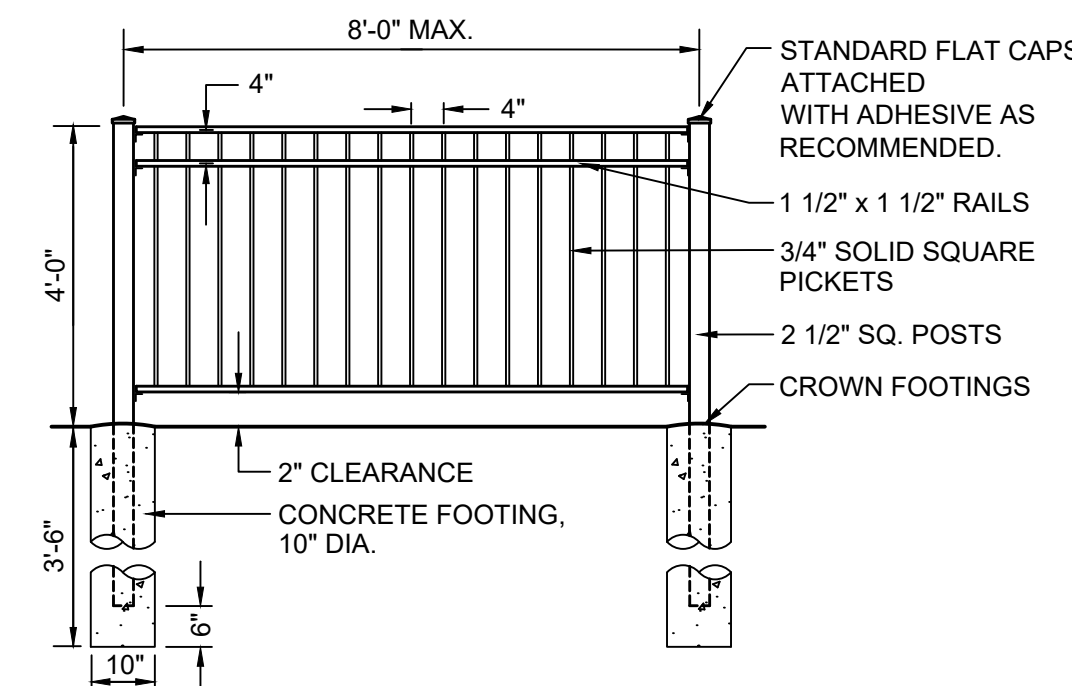
1 DECIDUOUS TREE PLANTING DETAIL
NOT TO SCALE

LOCATE ALL UNDERGROUND UTILITIES PRIOR TO DIGGING. EXCAVATE ENTIRE PLANT BED, AND BACKFILL WITH PLANTING MIX AS SPECIFIED. BED HEIGHT IS TO BE 1" ABOVE FINISH GRADE AND WELL DRAINED. MULCH LIMITS FOR PLANT BEDS TO EXTEND TO ALL EDGES OF THE BEDS. SEE PLANS FOR BED LAYOUTS. SEE PLANT LIST FOR PLANT SPACING. GAPS BETWEEN PLANTS SHALL BE NO GREATER THAN THE SPECIFIED SPACING FOR THAT PARTICULAR PLANT.



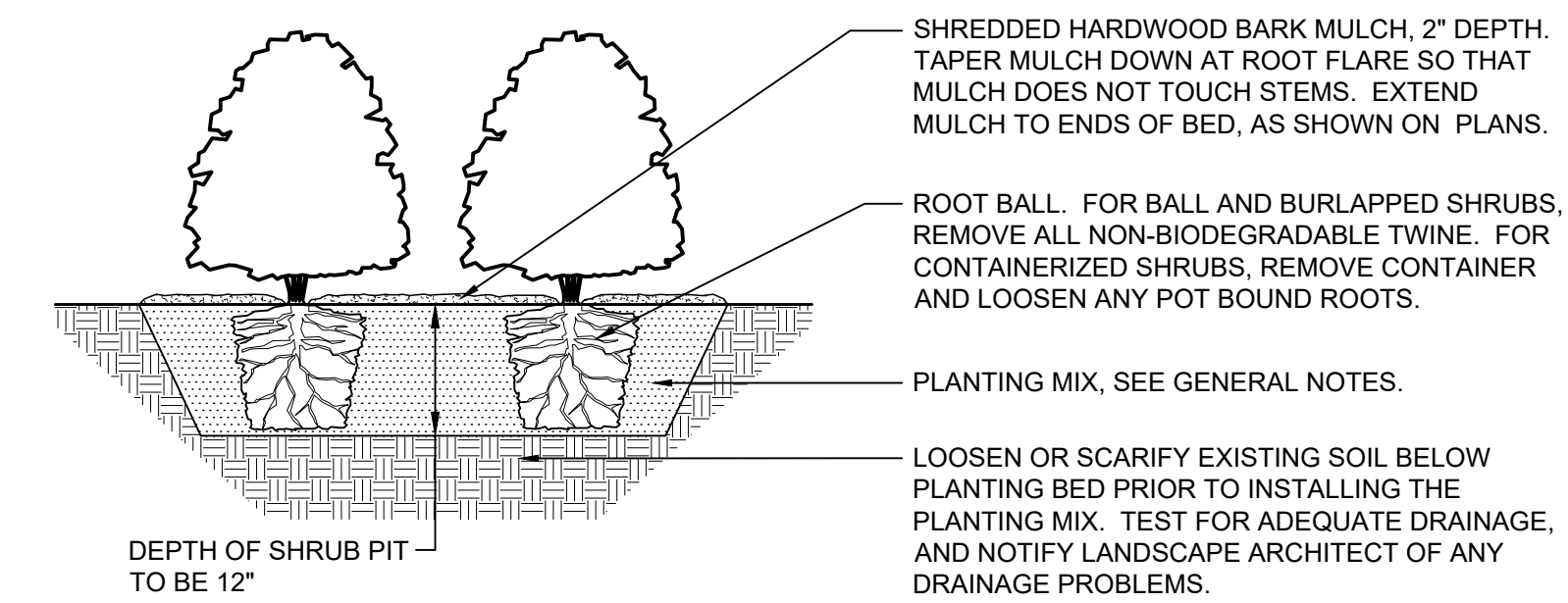
3 PERENNIAL PLANTING DETAIL
NOT TO SCALE

POOL FENCE AND GATES ARE TO BE MONTAGE PLUS STEEL FENCE BY AMERISTAR FENCE. FENCE AND GATES TO BE 3 RAIL MAJESTIC STYLE WITH A FLUSH BOTTOM RAIL. PICKET SPACING TO BE 3". INSTALL FENCE AND GATES AS RECOMMENDED BY THE MANUFACTURER. ALL FENCE COMPONENTS TO HAVE A BLACK FINISH. MANUFACTURER TO PROVIDE SHOP DRAWINGS WITH SIZES AND DIMENSIONS OF ALL COMPONENTS FOR APPROVAL. GATES TO HAVE IDPH APPROVED LOCKING HARDWARE FOR SAFETY.



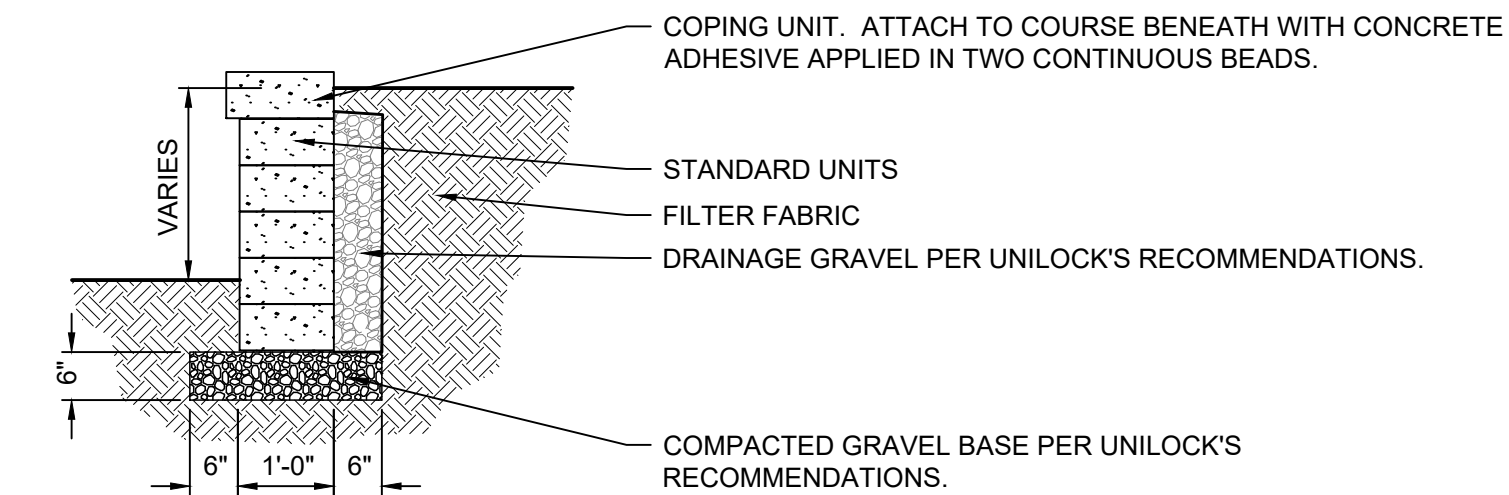
5 ORNAMENTAL STEEL FENCE AROUND POOL
NOT TO SCALE

LOCATE ALL UNDERGROUND UTILITIES PRIOR TO PLANTING. SHRUBS BEDS ARE TO BE EXCAVATED AS A SINGLE SHRUB PIT. EXTEND SHRUB PIT WIDTH TO EDGES OF PLANT BED AS SHOWN ON THE LANDSCAPE PLAN. LOCATE ROOT FLARE IN ROOT BALL AND SET SHRUB HEIGHT SO THAT ROOT FLARE IS FLUSH WITH FINISH GRADE. REMOVE TWINE FROM ROOT FLARE. BACKFILL AND WATER IN THE PLANTING MIX THOROUGHLY, WHILE KEEPING THE SHRUB PLUMB. STRAIGHTEN SHRUB IF SETTLING OCCURS. PRUNE OFF ALL DEAD, BROKEN OR SCARRED BRANCHES, AND SHAPE PRUNE AS DIRECTED BY THE LANDSCAPE ARCHITECT. MULCH LIMITS FOR SHRUBS SHALL EXTEND TO ALL OUTER EDGES OF PLANTING BEDS, SEE LANDSCAPE PLAN FOR BED LAYOUTS.



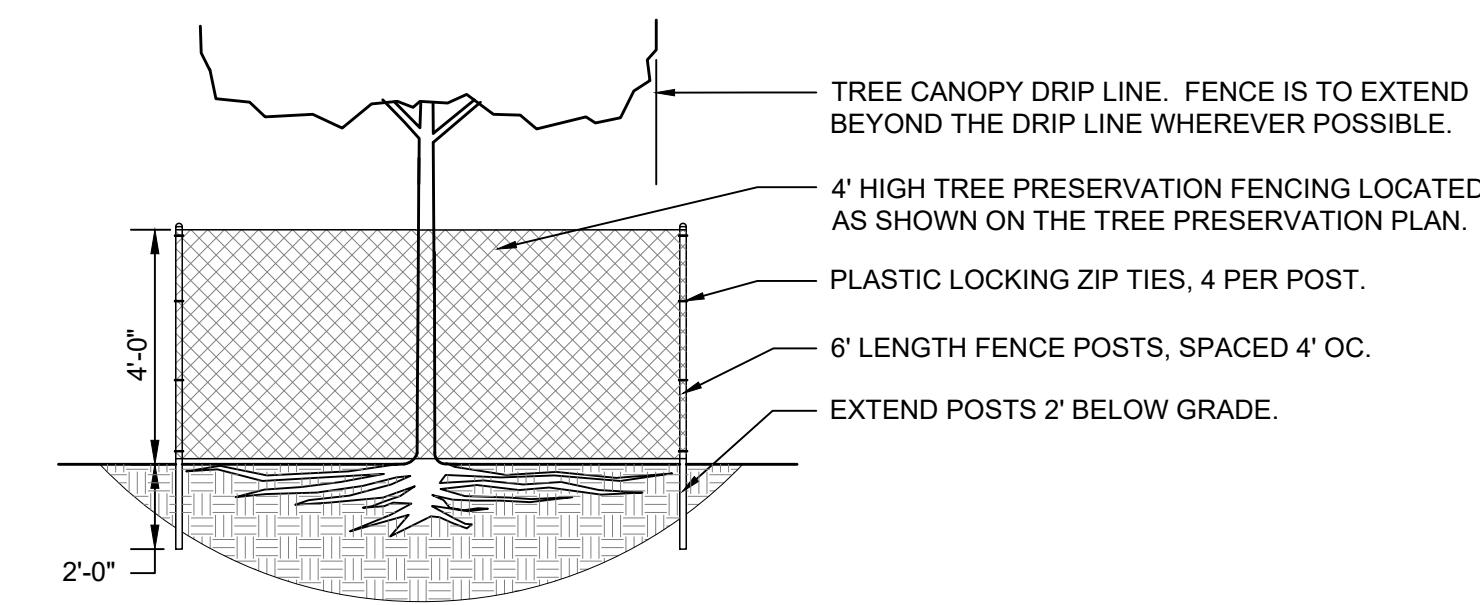
2 SHRUB PLANTING DETAIL
NOT TO SCALE

PRECAST BLOCK WALL SYSTEM TO BE LINEO BLOCK WALL BY UNILOCK, INC. AURORA, IL WWW.UNILOCK.COM. REVIEW ALL GRADES WITH LANDSCAPE ARCHITECT PRIOR TO CONSTRUCTION. CONTRACTOR SHALL SUBMIT COLOR SAMPLES ON SITE PRIOR TO CONSTRUCTION FOR LANDSCAPE ARCHITECT'S SELECTION AND APPROVAL. WALL TO BE INSTALLED PER MANUFACTURER'S RECOMMENDATIONS.

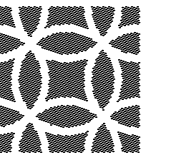


4 PRECAST BLOCK RETAINING WALL, 6" TO 30" HT.
NOT TO SCALE

FENCING SHALL BE INSTALLED IN LOCATIONS SHOWN ON THE TREE PRESERVATION AND REMOVAL PLAN. POSTS SHALL BE PLACED 4' ON CENTER. AFTER INSTALLING ALL POSTS, TIGHTLY WRAP THE FABRIC ACROSS THE POSTS TO PREVENT SAGGING. THE FABRIC SHALL BE ATTACHED OUTSIDE THE POSTS, AWAY FROM THE TREE. SAFETY FENCE FABRIC SHALL BE ORANGE CONTRACTOR'S GRADE SMOOTH TOP DIAMOND PLASTIC FENCE. POSTS SHALL BE 6' LONG HEAVY DUTY GALVANIZED STEEL T-POSTS, SET TO A DEPTH OF 2' BELOW GRADE. POST SHALL NOT BE DRIVEN INTO TREE ROOTS OR UTILITY LINES. LOCKING TIES SHALL BE 8" PLASTIC LOCKING ZIP TIES, 4 PER POST. ANY ALTERATIONS TO THE FENCING LAYOUT MUST BE APPROVED BY THE LANDSCAPE ARCHITECT.



6 TREE PROTECTION FENCING
NOT TO SCALE

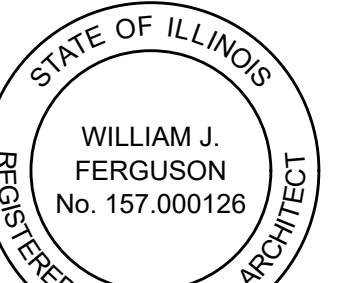


DANIEL WEINBACH & PARTNERS, LTD.

Landscape Architects

1142 W. Madison Street
Suite 206
Chicago, IL 60607

312 427-2888



William J. Ferguson

Revisions	
8.	
7.	
6.	
5.	
4.	ISSUED FOR APPROVAL 05/24/24
3.	ISSUED FOR APPROVAL 04/25/24
2.	ISSUED FOR APPROVAL 04/02/24
1.	ISSUED FOR APPROVAL 11/09/23

Project

THE VIEWS OF NAPERVILLE CLUBHOUSE

701 ROYAL ST GEORGE DRIVE
NAPERVILLE, IL 60563

Sheet Title

LANDSCAPE NOTES AND DETAILS

Date	11/02/2023	Project No.	DWP 23-102
Scale	1" = 20'-0"	Sheet No.	
Drawn By	FERGUSON		
Approved			L3.0