



VIA E-MAIL

11-15-2023

Tom Burgess


RE: Iron Gate Motor Condominium Association, Inc.
No objection by IGMCA ownership to proposed Iron Gate Motor Park proposal

Dear Mr. Burgess:

This communication is being sent by the Iron Gate Motor Condominium Association (“IGMCA”) Board in response to the Iron Gate Motor Park proposal presented to the IGMCA ownership. The proposal presented to the IGMCA ownership on behalf of Iron Gate Motor Park (copy of final PDF attached) is acceptable and no objection will be raised by the ownership so long as the preliminary plans approved by the City of Naperville and/or County officials do not vary from those plans presented to the IGMCA ownership.

Please let us know immediately as to the City of Naperville and/or County’s comments and/or approval of the proposal submitted by Iron Gate Motor Park.

Sincerely,


Wil Gonzalez

Board President

cc: Board of Directors, Iron Gate Motor Condominium Association

Iron Gate Motor Plaza Owners Condominiums Association Inc.

10/30/2023

2108 Ferry Road Unit 105

Naperville, Illinois 60563

RE: Highpoint Phase IIB

Naperville City Council Members,

On behalf of the IGMP Association, we approve of the proposed development to the land west of Iron Gate. Our association is most directly affected by the proposal seeing as we are immediately adjoined with this property. The proposed use is a great fit with our community.

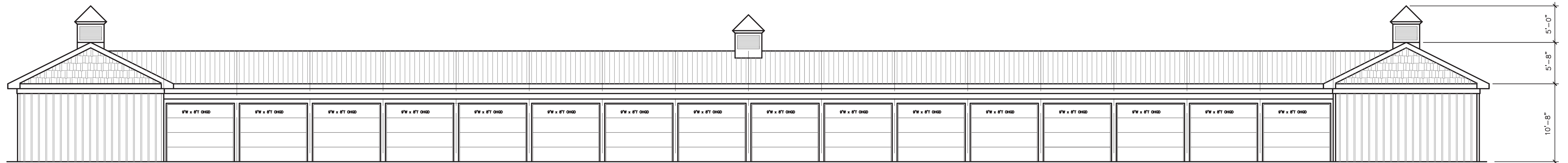
Sincerely,

Brian Ganz, President
Iron Gate Motor Plaza Condominium Owners Association Inc.

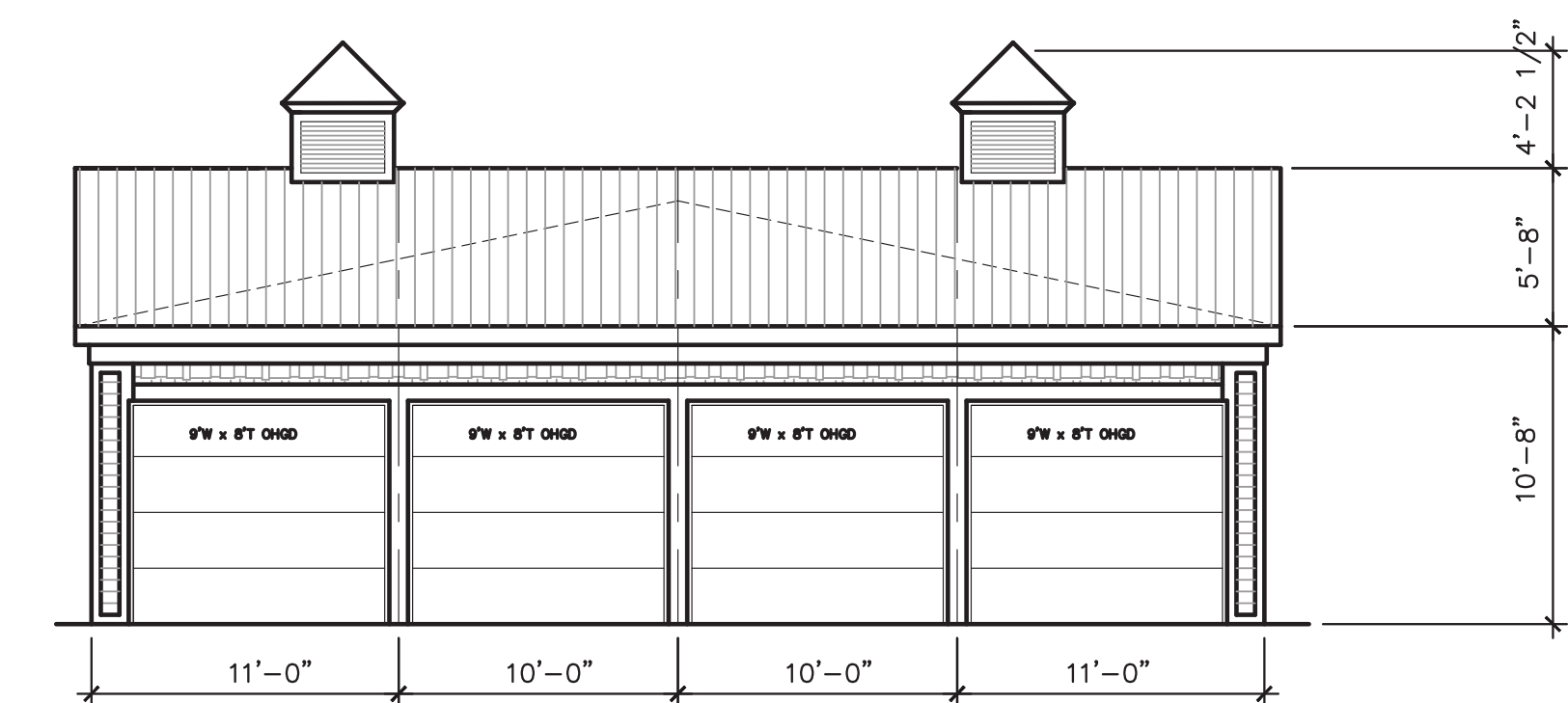


Iron Gate Motor Park

Buildings 2E, 2W, and 4W



1 PRELIMINARY SEAST - WESTELEVATION SCHEME 4W
SCALE: 1/8"=1'-0"

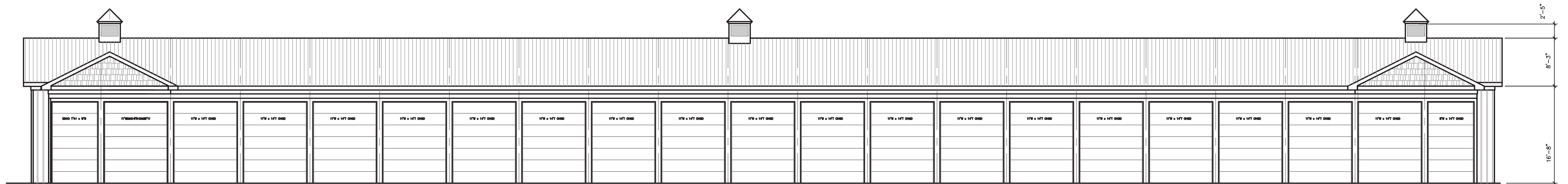


2 PRELIMINARY ELEVATION SCHEME 4W - NORTH-SOUTH
SCALE: 3/32"=1'-0"

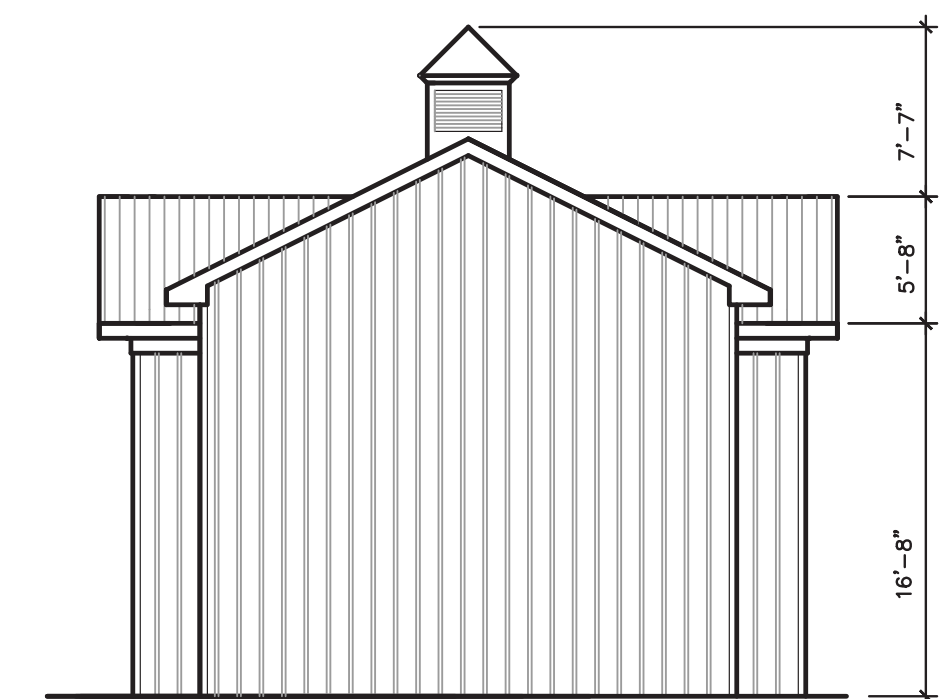
CAR STORAGE

Iron Gate Motor Park

Building 1E



1 PRELIMINARY ELEVATION SCHEME 1E - NORTH - SOUTH
SCALE: 3/32"=1'-0"

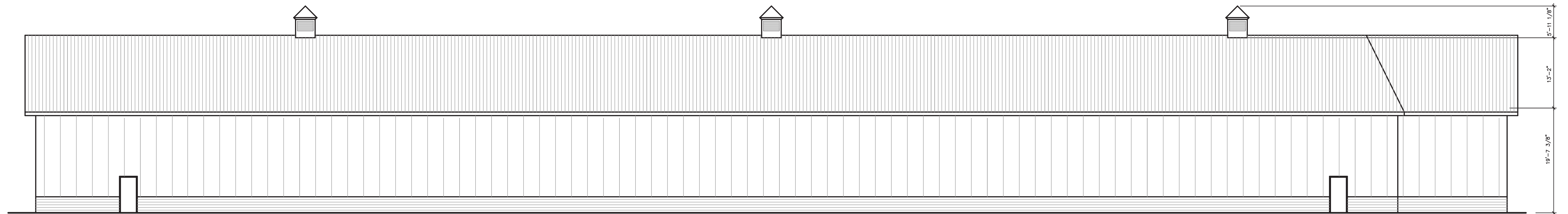


2 PRELIMINARY ELEVATION SCHEME 1E -EAST-WEST
SCALE: 3/32"=1'-0"

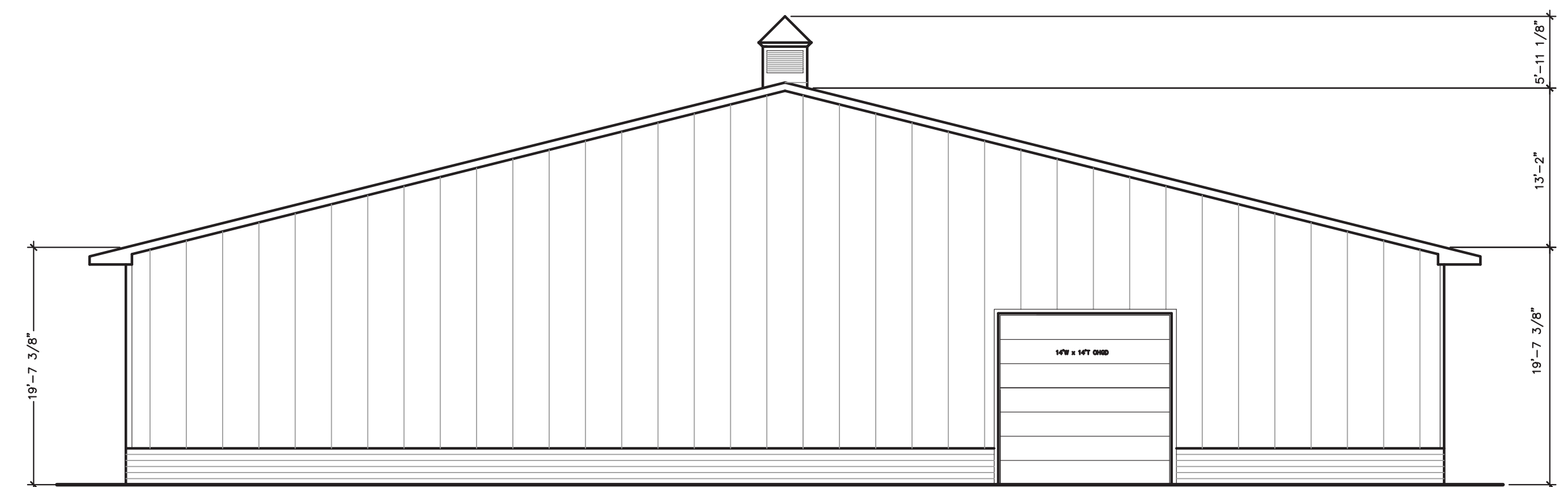
BOAT STORAGE

Iron Gate Motor Park

Building 4E



1 PRELIMINARY ELEVATION SCHEME 4E - NORTH-SOUTH
SCALE: 3/32"=1'-0"

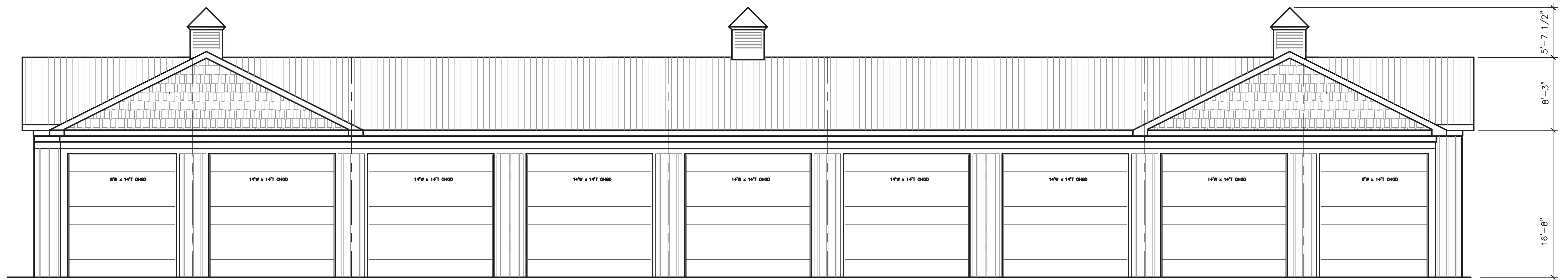


2 PRELIMINARY SECTION SCHEME 4E - EAST-WEST ELEVATION
SCALE: 3/32"=1'-0"

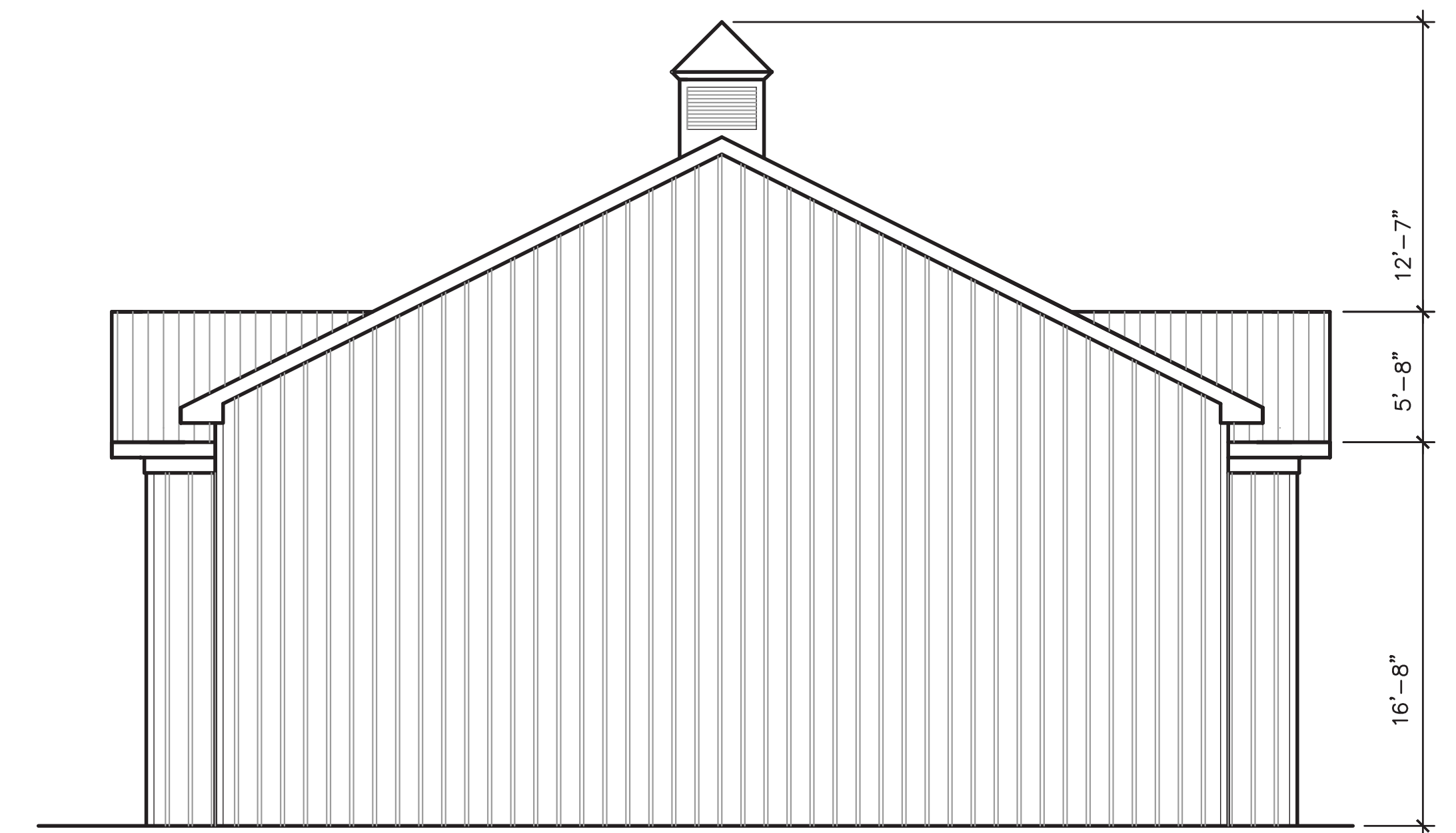
CLUB STORAGE

Iron Gate Motor Park

Buildings 1W and 5W



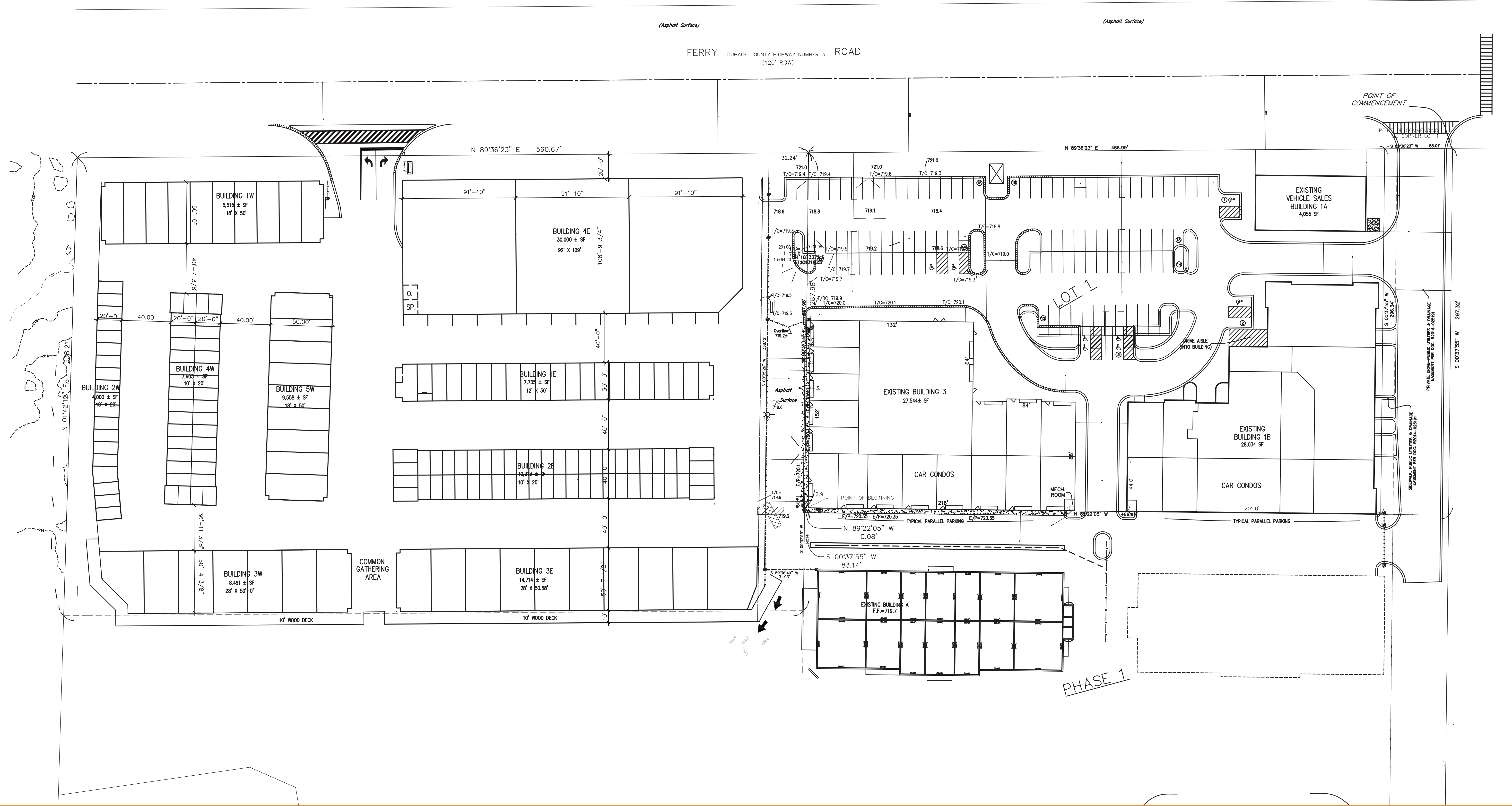
1 PRELIMINARY EAST - WEST ELEVATION SCHEME 5W
5W SCALE : 3/32"=1'-0"



2 PRELIMINARY ELEVATION SCHEME 5W -NORTH-SOUTH
5W SCALE: 3/32"=1'-0"

RV STORAGE

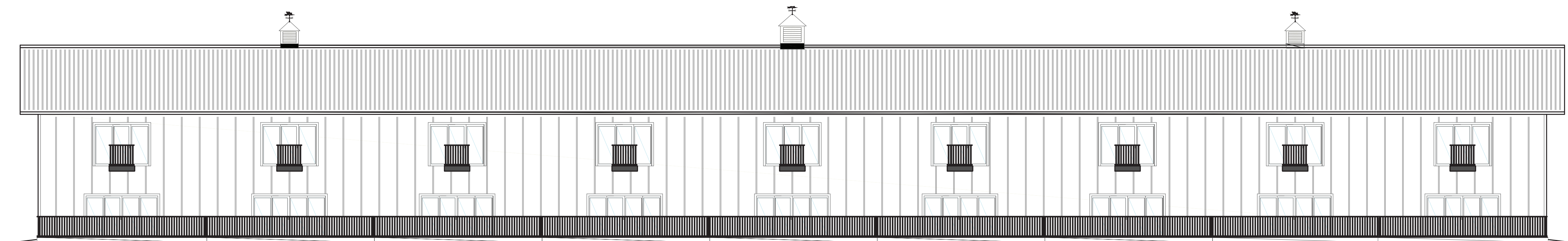
Iron Gate Motor Park Site Plan



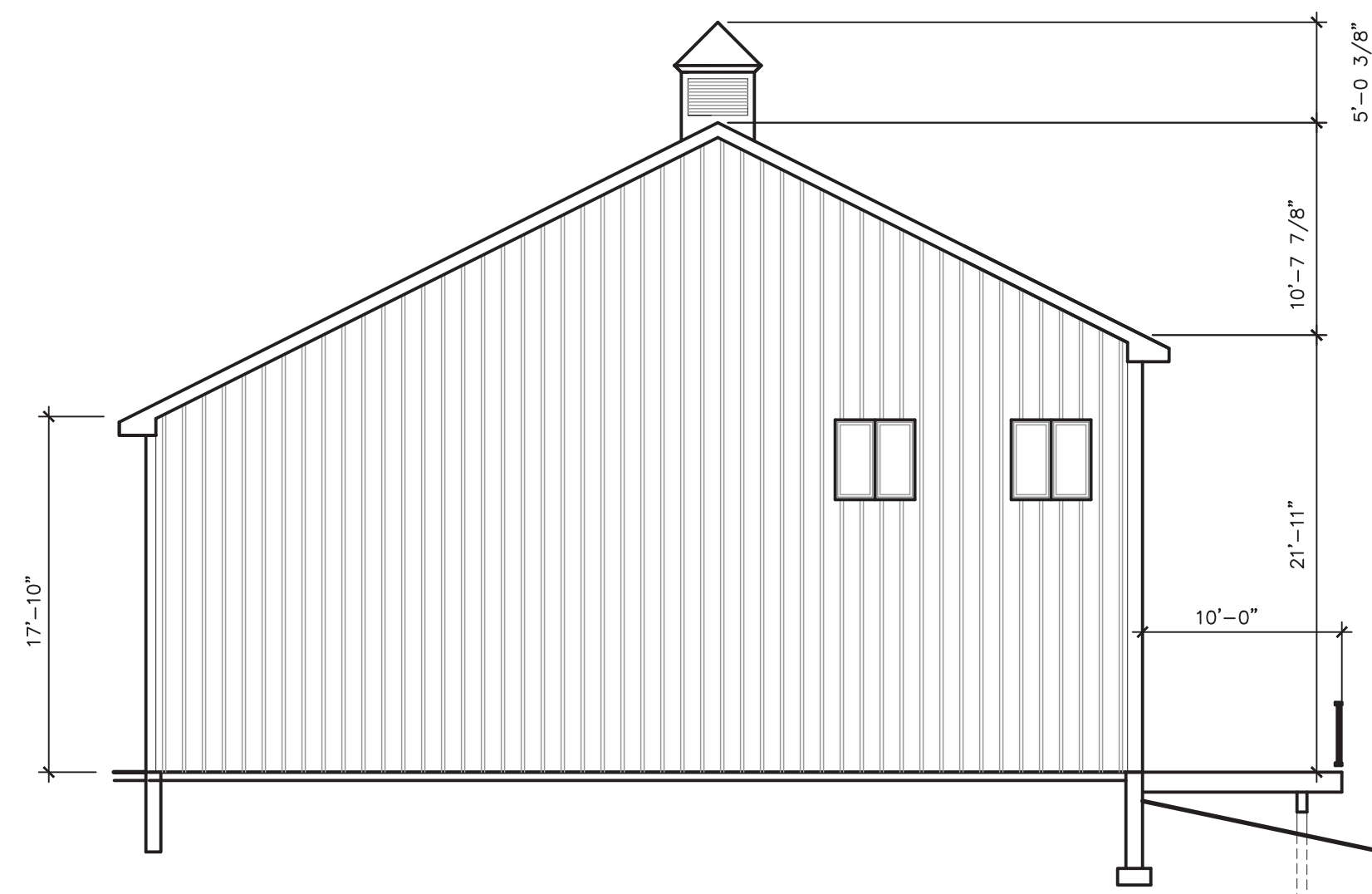
Iron Gate Motor Park Building 3E



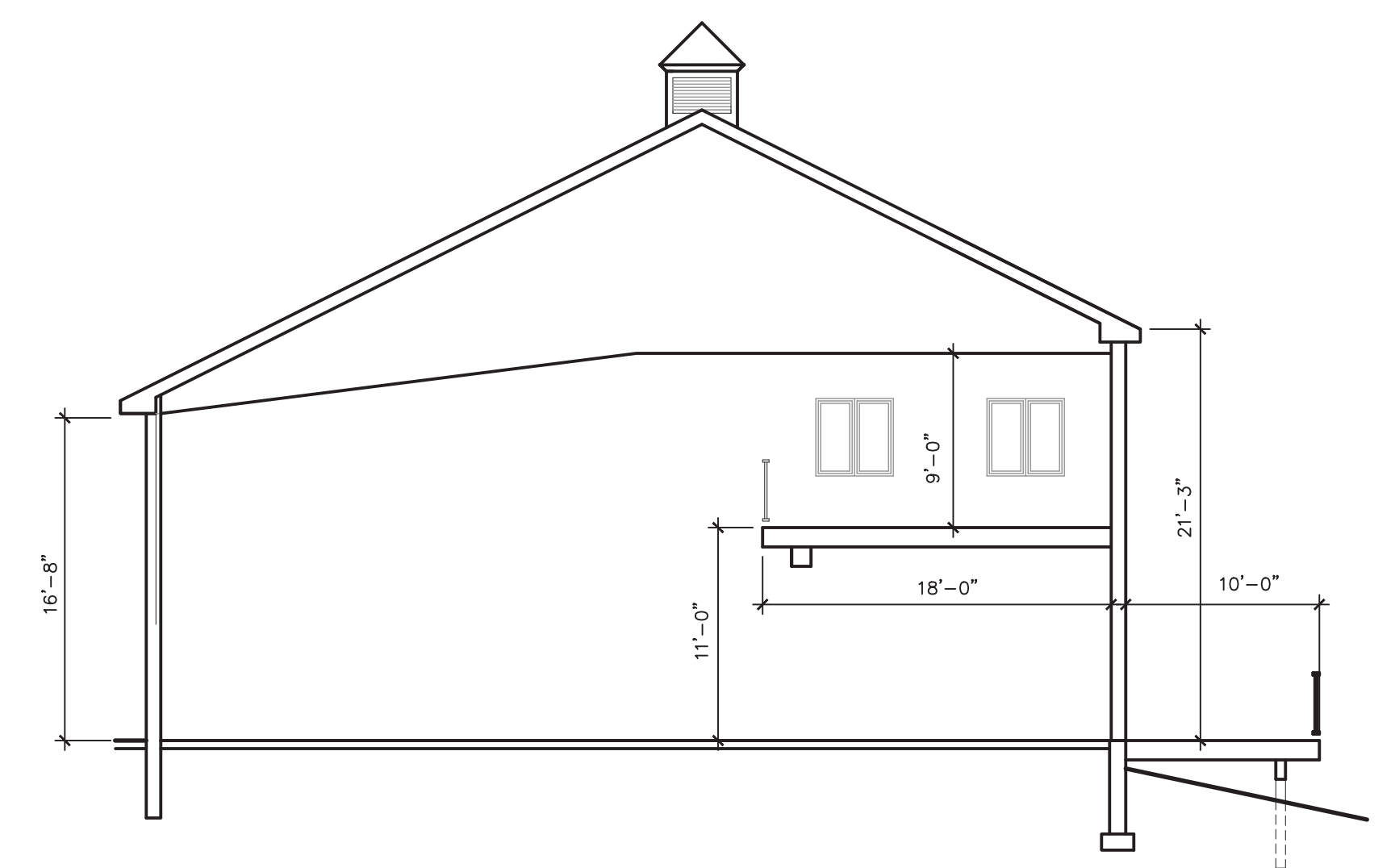
1 PRELIMINARY ELEVATION SCHEME 3E - NORTH
SCALE: 3/32"=1'-0"



4 PRELIMINARY ELEVATION SCHEME 3E - SOUTH
SCALE: 3/32"=1'-0"



3 PRELIMINARY ELEVATION SCHEME 3
SCALE: 1/8"=1'-0"



2 PRELIMINARY BUILDING SECTION SCHEME 3E
SCALE: 1/8"=1'-0"

PRIVATE GARAGE CONDO