



844 S RIE 39
NAPERVILLE, IL 60540

FIELD VERIFICATION
Contractor shall verify all figured dimensions and conditions at the job site and notify Aria Cup Architects, Inc. of any dimensional errors, omissions or discrepancies before beginning or fabricating any work. Do not scale these drawings.

Copyright © 2004 by Arup Group Architects, Inc. shall retain all common law, statutory and other reserved rights. These drawings and related documents shall not be duplicated, disclosed or otherwise without written consent of Arup Group Architects, Inc.

06/16/25	PUD RESUBMISSION
05/15/25	PUD RESUBMISSION

O. DATE	REMARKS
REVISIONS	

Drawing Title

SITE PLAN

Job No.
255901

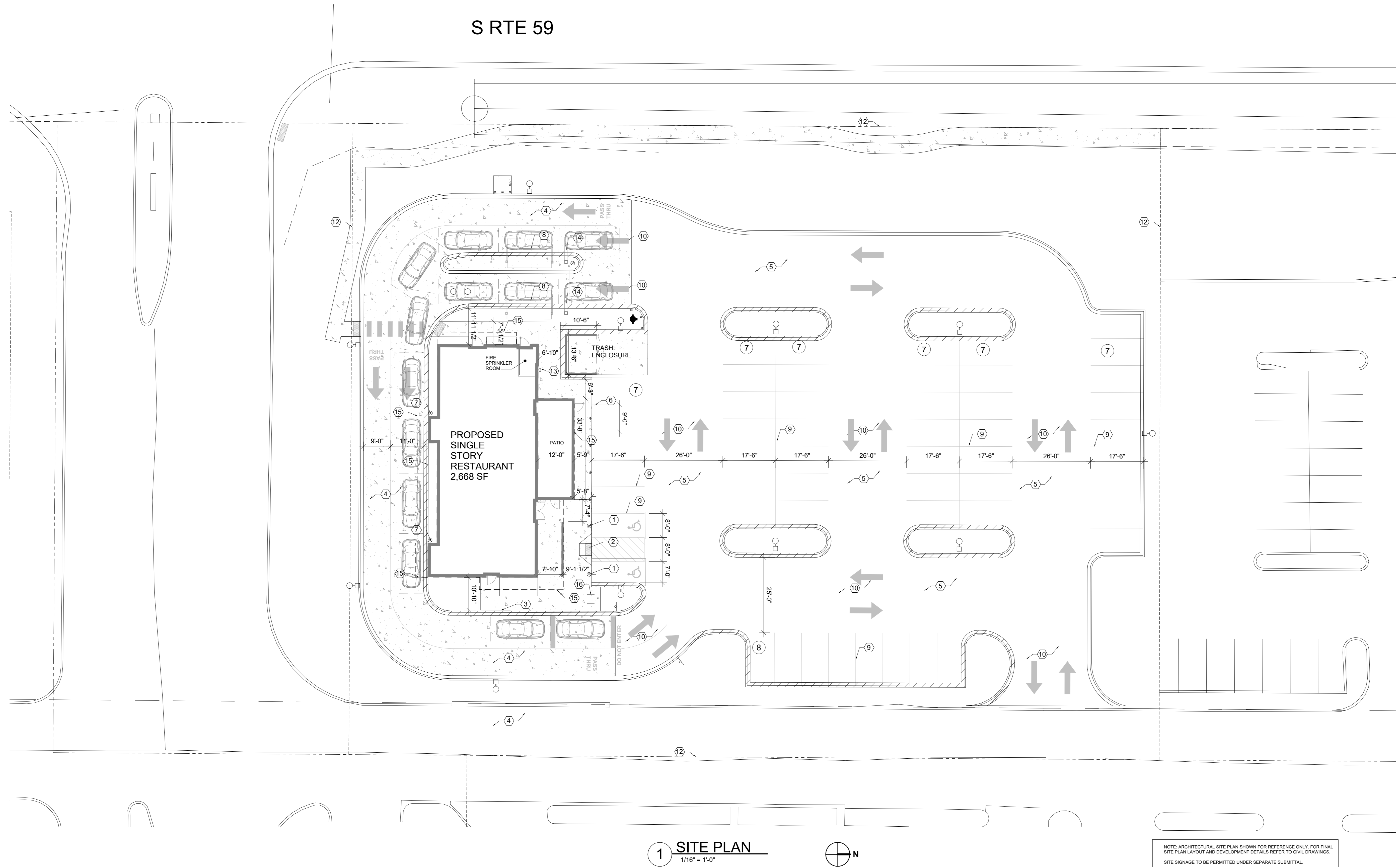
Author

Scale
1/16" = 1'-0"

5/15/2025

Sheet No.

SP1



NOTE: ARCHITECTURAL SITE PLAN SHOWN FOR REFERENCE ONLY. FOR FINAL SITE PLAN LAYOUT AND DEVELOPMENT DETAILS REFER TO CIVIL DRAWINGS.

SITE SIGNAGE TO BE PERMITTED UNDER SEPARATE SUBMITTAL.

SITE PLAN KEY NOTES:

- | | |
|----|--|
| 1 | VAN ACCESSIBLE PARKING SPACE AND ACCESSIBLE PARKING SIGN |
| 2 | ADA PARKING RAMP. REFER TO CIVIL PLANS |
| 3 | 4" ORNAMENTAL RAILING. |
| 4 | CONCRETE PAVEMENT REFER TO CIVIL FOR MORE INFORMATION |
| 5 | ASPHALT PAVEMENT REFER TO CIVIL FOR MORE INFORMATION |
| 6 | WHEEL STOP TYP. |
| 7 | PROTECTIVE BOLLARD |
| 8 | DRIVE THRU ORDERING EQUIPMENT BY OTHERS. GC TO PROVIDE FOUNDATIONS AND ELECTRICAL. GC TO COORDINATE WITH SIGNAGE VENDOR. |
| 9 | PARKING LOT STRIPING |
| 10 | PAVEMENT MARKINGS |
| 11 | NOT USED. |
| 12 | PROPERTY LINE |
| 13 | FIRE DEPARTMENT CONNECTION |
| 14 | DRIVE THRU HEIGHT CLEARANCE BAR GC TO PROVIDE FOUNDATIONS. |
| 15 | LINE REPRESENTS OUTLINE OF THE CANOPY. REFER TO ELEVATIONS FOR MORE DETAILS. |
| 16 | BIKE RACK. |



844 S KIE 39
NAPERVILLE, IL 60540

LD VERIFICATION
Contractor shall verify all figured dimensions and conditions at the job site and notify Arina up Architects, Inc. of any dimensional errors, omissions or discrepancies before beginning or fabricating any work. Do not scale drawings.

PYRIGHT
Group Architects, Inc. shall retain all common law, statutory and other reserved rights. These drawings and related documents shall not be duplicated, disclosed or otherwise without written consent of Arina up Architects, Inc.

	06/16/25	PUD RESUBMISSION
	05/15/25	PUD RESUBMISSION
O. DATE	REMARKS	
REVISIONS		

Following Title

FLOOR PLAN

No.

255901

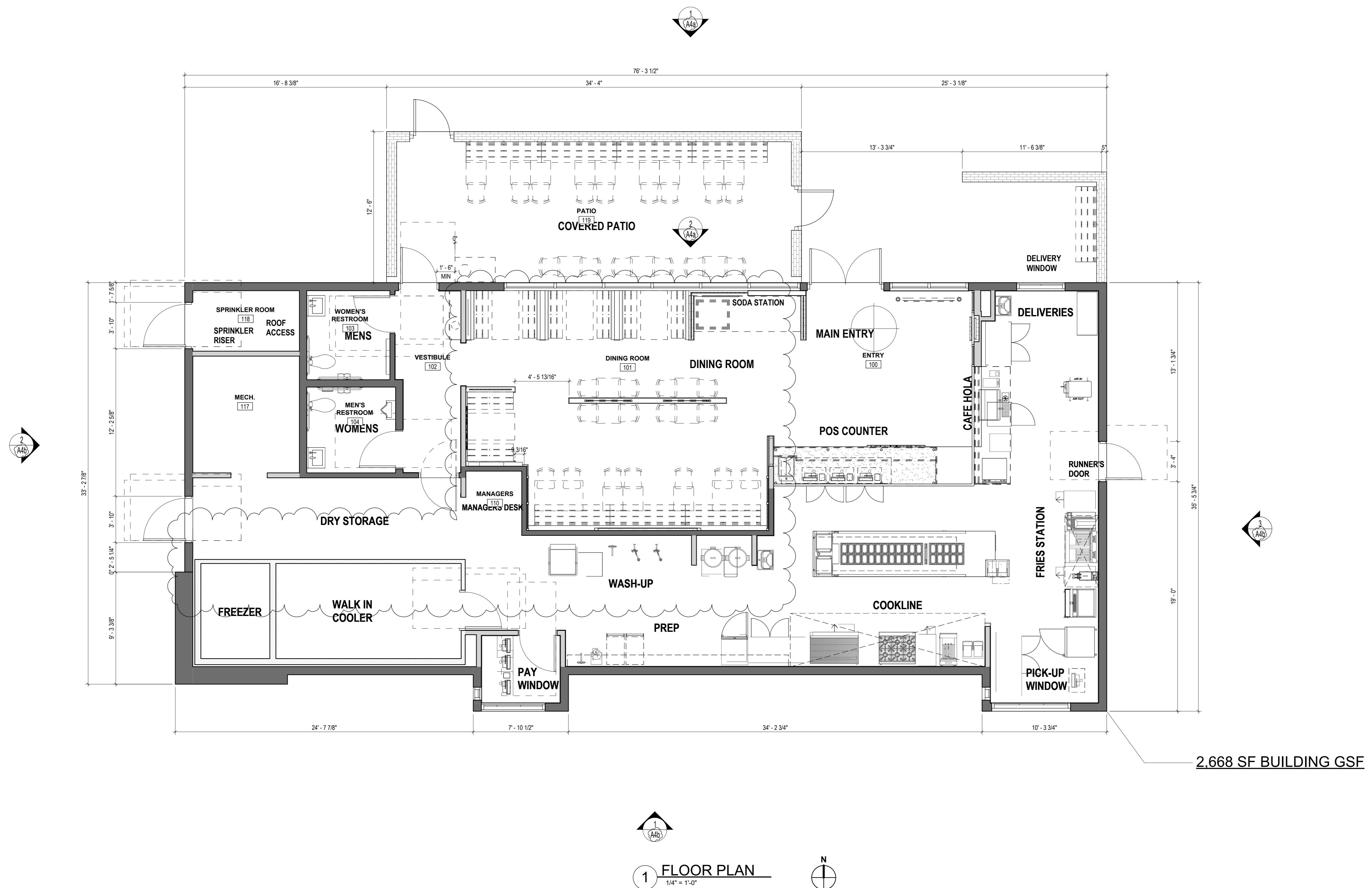
ale

4" = 1'-0"

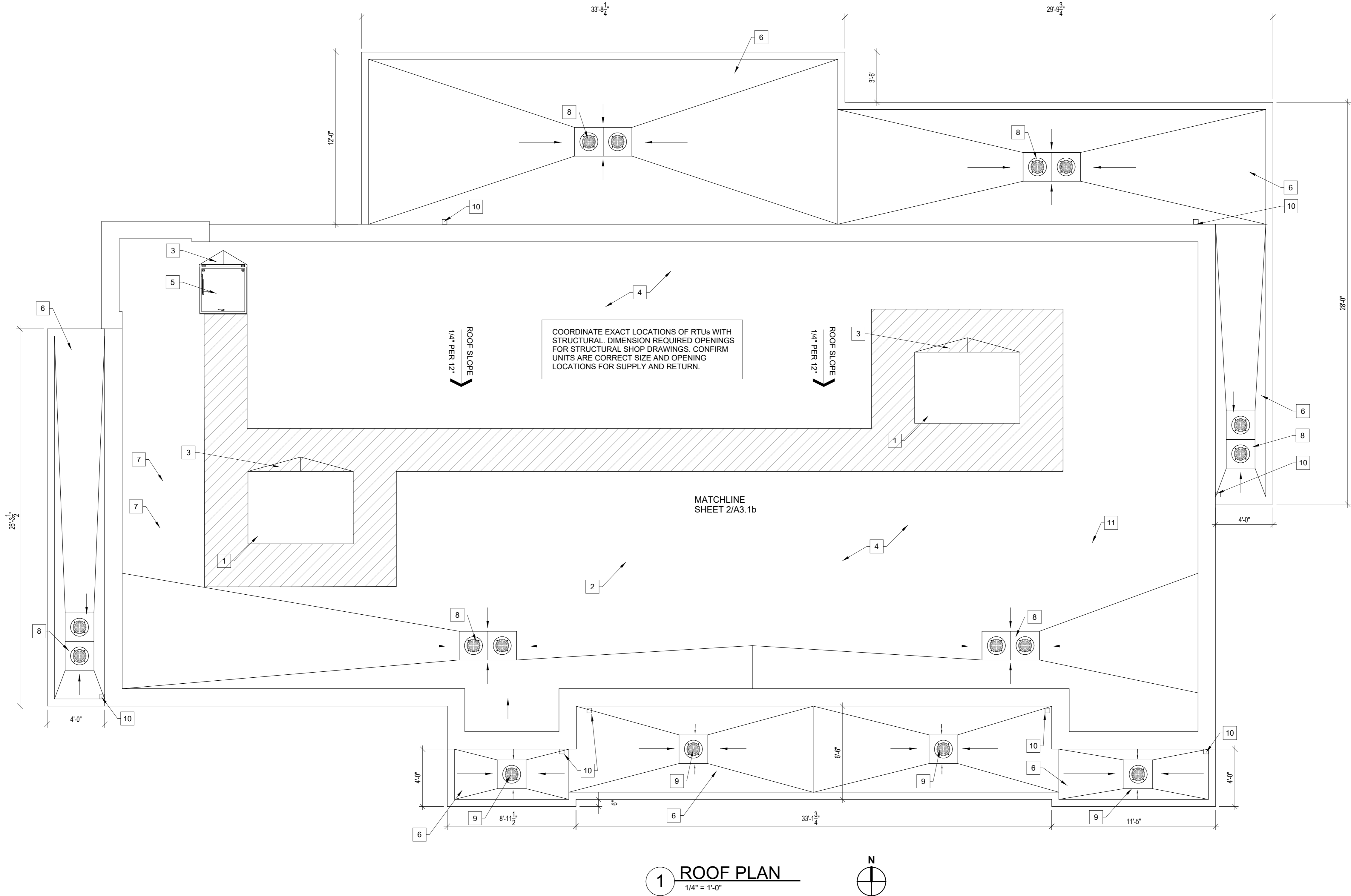
Sheet No. _____

44

A1



6/13/2025 8:45:15 AM Autodesk Docs//255901-GUZMAN Y GOMEZ - SOUTH NAPERVILLE, IL/255901_R23_A_GUZMAN Y GOMEZ-SOUTH NAPERVILLE.il



GENERAL NOTES

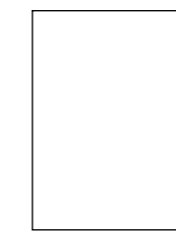
- DRAWINGS ARE DIAGRAMMATIC ONLY AND REPRESENT THE GENERAL SCOPE OF THE WORK. PRIOR TO SUBMITTING BID, VISIT THE JOB SITE TO OBSERVE THE EXISTING CONDITIONS OF THE REQUIREMENTS THAT MAY NOT BE SPECIFICALLY CALLED OUT IN THIS PORTION OF THE CONSTRUCTION DOCUMENTS. NOTIFY ARCHITECT OF ANY CONFLICTS OR DISCREPANCIES PRIOR TO SUBMISSION BID.
- INSTALLATION OF EQUIPMENT SHALL COMPLY WITH EQUIPMENT MANUFACTURER'S INSTALLATION AND CLEARANCE REQUIREMENTS TO ALLOW FOR INSPECTION, SERVICE, REPAIR OR REPLACEMENT.
- CONTRACTOR SHALL COMPLY WITH ALL LANDLORD'S TENANT CRITERIA. COORDINATE AND SCHEDULE ALL WORK WITH LANDLORD'S FIELD REPRESENTATIVE
- IDENTIFY ALL ROOF MOUNTED EQUIPMENT WITH STORE NAME AND UNIT NUMBER USING PERMANENT WEATHER PROOF 2" HIGH DIE-CUT LETTERS
- ALL ROOFTOP EQUIPMENT SHALL BE SET LEVELED
- CONTRACTOR SHALL COORDINATE ALL NEW AND EXISTING ROOF WORK TO CONFORM TO LANDLORDS ROOFING STANDARDS AND PER LOCAL CODE REQUIREMENTS. FIELD VERIFY ALL ROOF WORK PRIOR TO BID.
- REFER TO MECHANICAL DRAWINGS FOR EQUIPMENT
- REFER TO STRUCTURAL FOR ADDITIONAL INFORMATION
- R- VALUE OF RIGID INSULATION MAY VARY DEPENDING ON MANUFACTURER. CONTRACTOR SHALL BE RESPONSIBLE FOR VERIFYING APPROPRIATE THICKNESS TO MEET R-VALUE REQUIREMENTS.
- VERTICAL ROOF MEMBRANE SURFACES ON VERTICAL BACK WALLS OF PARAPET SURFACES SHALL BE WHITE.
- PROVIDE PIE SUPPORTS (NOT SHOWN HERE) FOR GAS AND CONDENSATE LINES AT 4'-0" O.C. MAX.
- ALL CONDENSATE LINES SHALL BE INSTALLED TO PROVIDE POSITIVE DRAINAGE.GENERAL CONTRACTOR SHALL PROVIDE BLOCKING AS REQUIRED TO ELIMINATE SAGGING.
- ROOF PENETRATIONS TO BE INSTALLED PER DETAILS. - SEE STRUCTURAL DRAWINGS FOR MORE INFORMATION.

ROOF PLAN KEY NOTES:

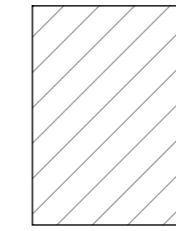
- RTU - SEE MECHANICAL SHEETS
- MAU - SEE MECHANICAL DRAWINGS
- PROVIDE TAPERED RIGID INSULATION CRICKETS TO PROVIDE PROPER DRAINAGE (1/4" :1'-0") AS REQUIRED. VERIFY LOCATION IN FIELD.
- GC TO PROVIDE TPO ROOF MEMBRANE WITH R-30 MIN RIGID INSULATION OVER ROOF THROUGHOUT.
- ROOF HATCH. - SEE DETAIL 1/A303.
- EXTERIOR CANOPY.
- CONDENSING UNIT FOR WALK IN COOLER AND FREEZER SEE MECHANICAL DRAWINGS.
- ROOF DRAIN COMBINATION WITH OVERFLOW ROOF DRAIN.
- ROOF DRAIN.
- PRE MANUFACTURED CANOPY DOWNSPOUT. SEE ELEVATIONS FOR MORE INFORMATION.
- EXHAUST FAN

LEGEND

PARAPET WALLS



- ROOF MEMBRANE:
- MECHANICALLY FASTENED, POLYVINYL CHLORIDE (PVC) ROOFING SYSTEM
 - SEE COMCHECK ON SHEET A005 FOR MINIMUM R-VALUE FOR RIGID INSULATION
 - THICKNESS: 40 MILS.
 - EXPOSED FACE COLOR, WHITE



- WALKWAY:
- FACTORY FORMED, NON-SLIP, HEAVY DUTY
 - WALKWAY PADS OR ROLLS
 - APPROXIMATE 3/16" THICK
 - APPROXIMATE 30" X 60"



FIELD VERIFICATION
Contractor shall verify all figured dimensions and conditions at the job site and notify Aria Group Architects, Inc. of any dimensional errors, omissions or discrepancies before beginning or fabricating any work. Do not scale these drawings.

COPYRIGHT
Aria Group Architects, Inc. shall retain all common law, statutory and other reserved rights. These drawings and related documents shall not be duplicated, disclosed or otherwise without written consent of Aria Group Architects, Inc.

06/16/25	PUD RESUBMISSION
05/15/25	PUD RESUBMISSION

NO.	DATE	REMARKS
REVISIONS		

Drawing Title

ROOF PLAN

Job No.
255901

Drawn
Author

Scale
1/4" = 1'-0"

Date
05/15/2025

Sheet No.

A3

6/13/2025 8:45:15 AM Autodesk Docs://255901-GUZMAN Y GOMEZ SOUTH NAPERVILLE IL/255901-R23_A_GUZMAN Y GOMEZ SOUTH NAPERVILLE IL

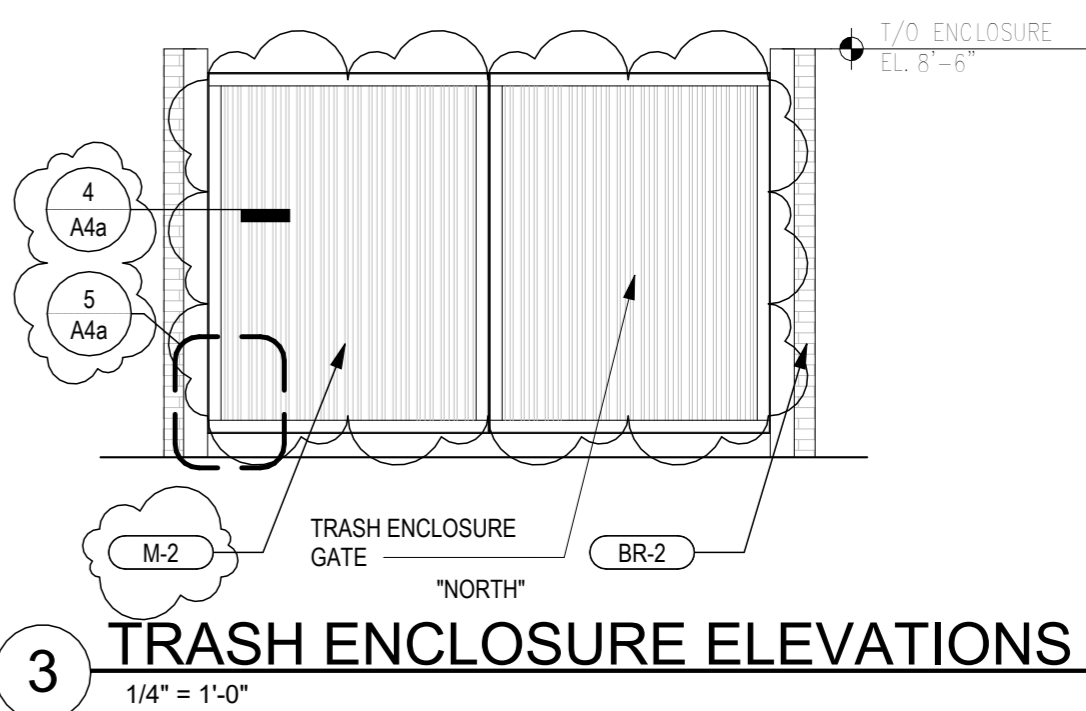
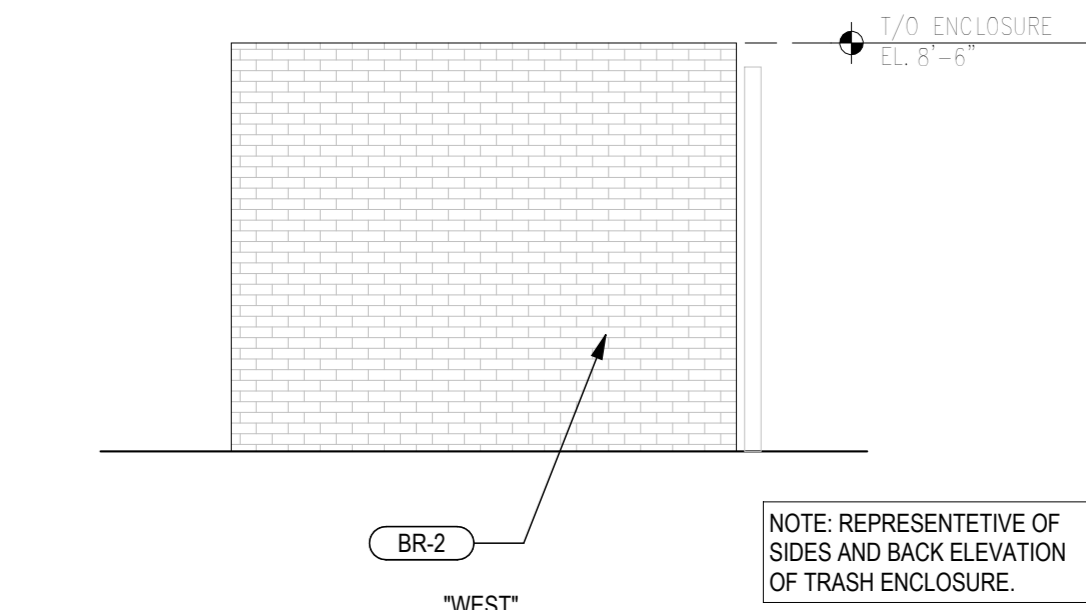
2 NORTH ELEVATION AT PATIO
1/4" = 1'-0"

1 NORTH ELEVATION
1/4" = 1'-0"

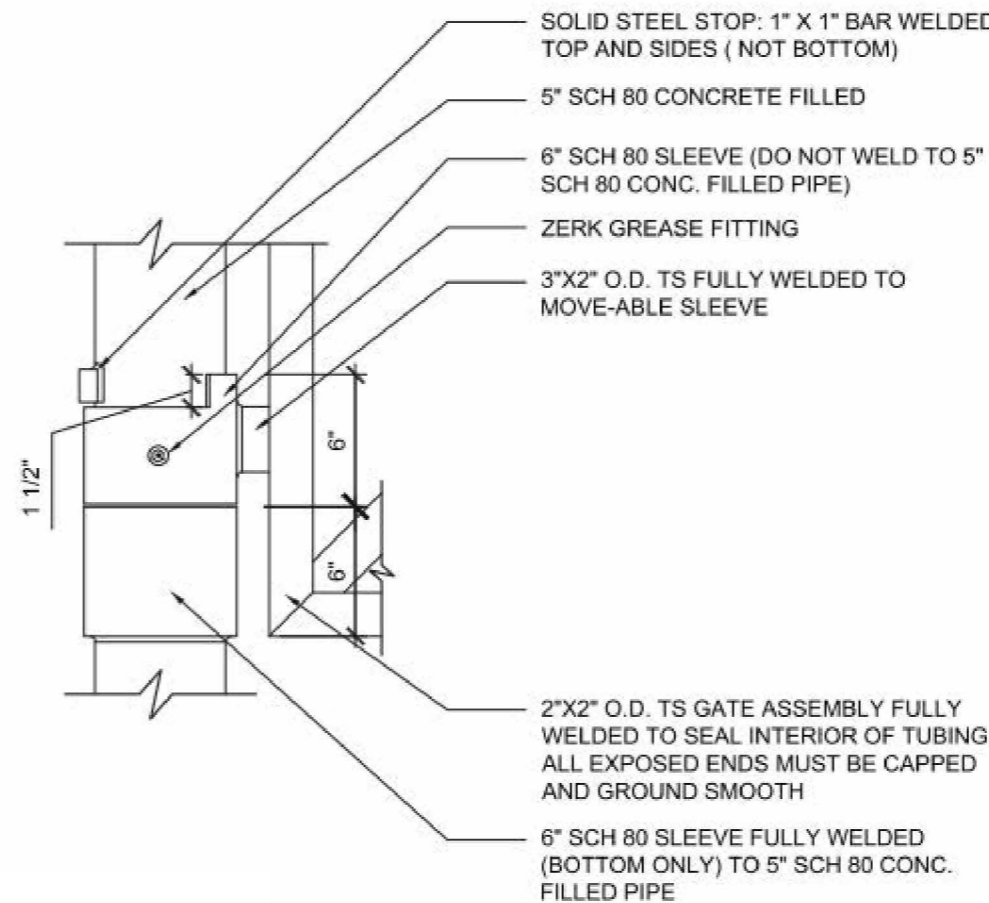
5 HINGE DETAIL
1" = 1'-0"

4 HINGE DETAIL
1" = 1'-0"

FINISH LEGEND					
TAGS	BASE MATERIAL	WEST ELEVATION	EAST ELEVATION	SOUTH ELEVATION	NORTH ELEVATION
BR-2	BLACK BRICK	61.1%	45.8%	20%	38.8%
M-1	YELLOW CANOPY	12.3%	10.8%	9.1%	10.5%
MS-1	BLACK METAL MESH	14.7%	28.9%	30.7%	23.7%
WD-1	WOOD PANEL	11.9%	14.5%	11.9%	7.3%
SF-1	STOREFRONT	-	-	-	-
M-2	BLACK PANEL & COPING	-	-	-	-
ACCENT MATERIAL					
MU-1	BLACK & WHITE MURAL	-	-	14.5%	19.7%
BR-1	YELLOW BRICK	-	-	13.8%	-

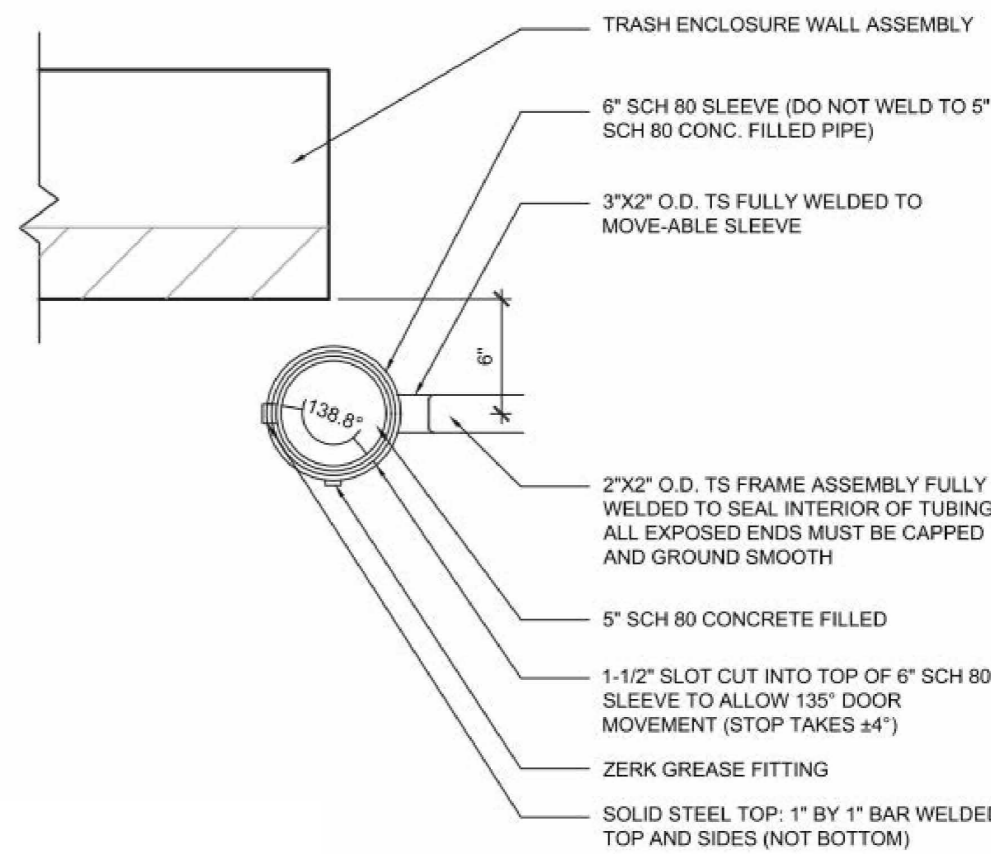


3 TRASH ENCLOSURE ELEVATIONS
1/4" = 1'-0"

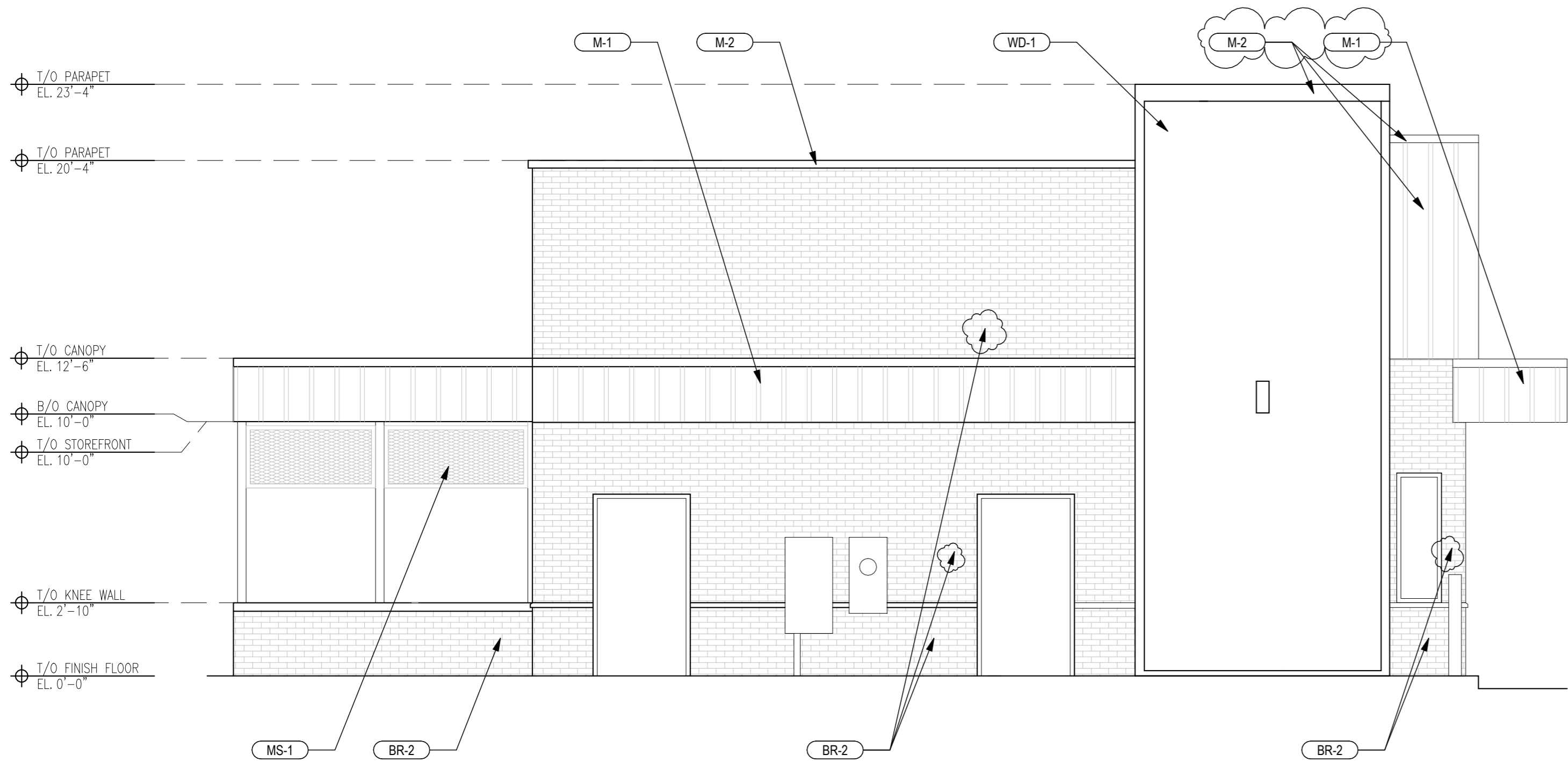


VERIFY LOCATION OF ALL UNDER-GROUND UTILITIES BEFORE EXCAVATION. GRIND ALL EXPOSED EDGES SMOOTH

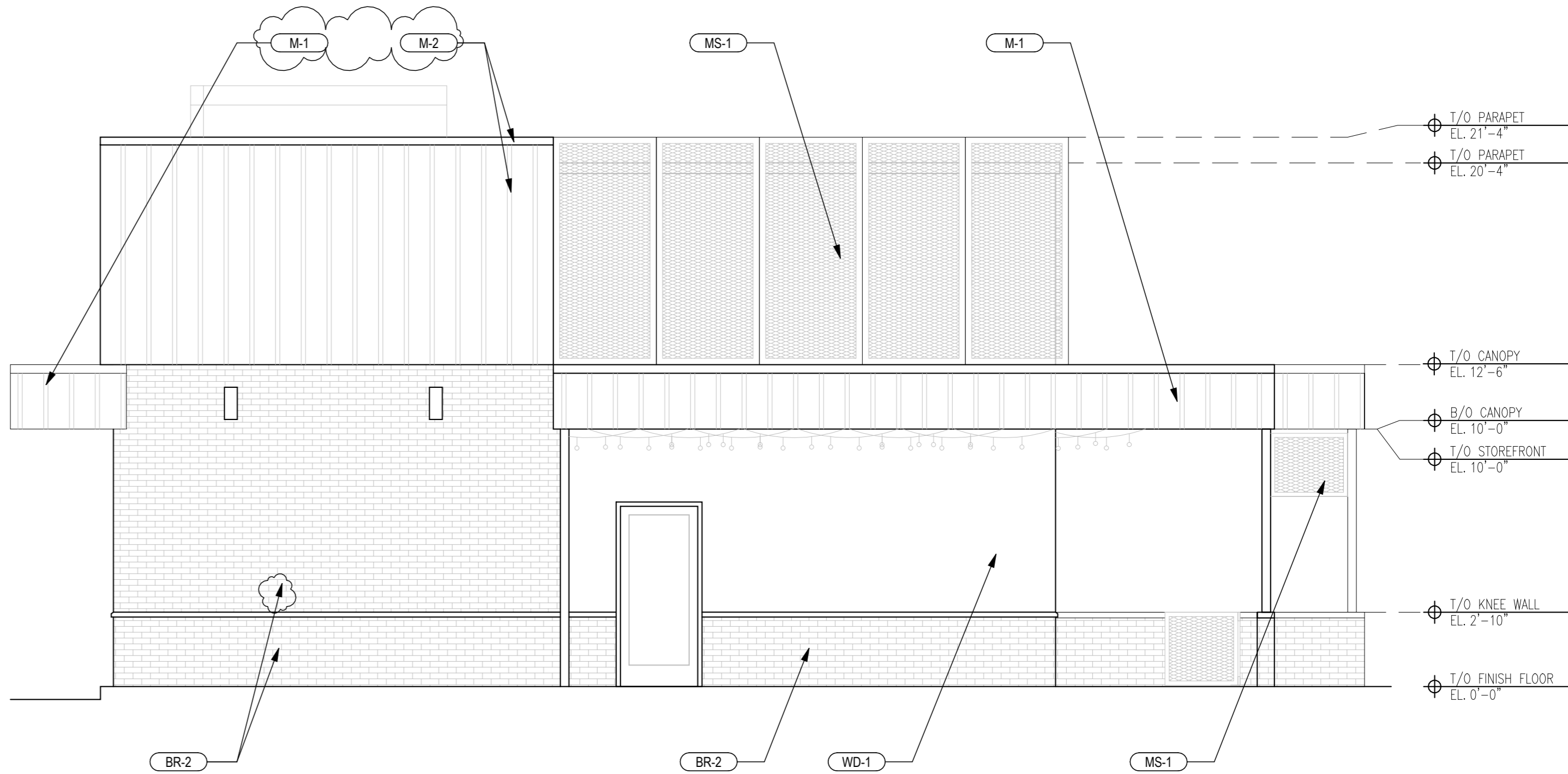
G.C. TO APPLY LIBERAL AMOUNT OF GREASE WHERE UPPER PORTION OF HINGE RESIDES PRIOR TO FINAL SETTING TOP PORTION OF HINGE



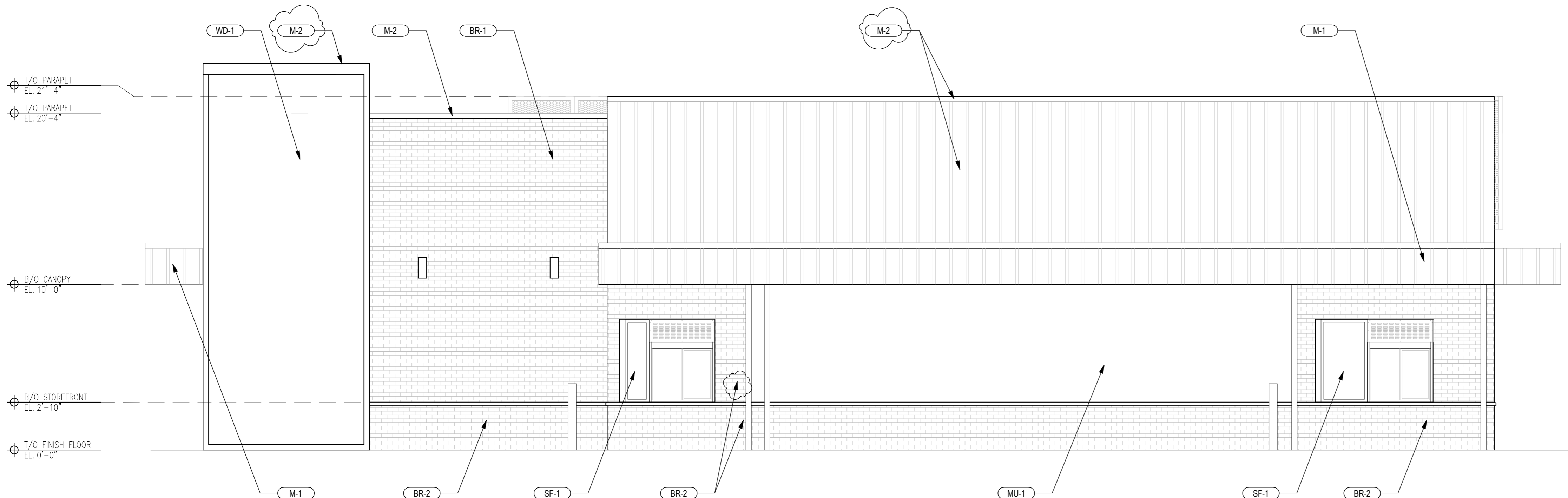
6/13/2025 8:45:15 AM Autodesk Docs // 255901-GUZMAN Y GOMEZ - SOUTH NAPERVILLE, IL 255901_R03_A_GUZMAN Y GOMEZ SOUTH NAPERVILLE, IL 255901



2 WEST ELEVATION
1/4" = 1'-0"



3 EAST ELEVATION
1/4" = 1'-0"



1 SOUTH ELEVATION
1/4" = 1'-0"

FINISH LEGEND					
TAGS	BASE MATERIAL	WEST ELEVATION	EAST ELEVATION	SOUTH ELEVATION	NORTH ELEVATION
BR-2	BLACK BRICK	61.1%	45.8%	20%	38.8%
M-1	YELLOW CANOPY	12.3%	10.8%	9.1%	10.5%
MS-1	BLACK METAL MESH	14.7%	28.9%	30.7%	23.7%
WD-1	WOOD PANEL	11.9%	14.5%	11.9%	7.3%
SF-1	STOREFRONT	-	-	-	-
M-2	BLACK PANEL & COPING	-	-	-	-
ACCENT MATERIAL					
MU-1	BLACK & WHITE MURAL	-	-	14.5%	19.7%
BR-1	YELLOW BRICK	-	-	13.8%	-

aria
GROUP

830 North Blvd.
Oak Park, Illinois
60301

708-445-8400
ariainc.com

ARIA GROUP ARCHITECTS, INC.



844 S RTE 59
NAPERVILLE, IL 60540

FIELD VERIFICATION
Contractor shall verify all figured dimensions and conditions at the job site and notify Aria Group Architects, Inc. of any dimensional errors, omissions or discrepancies before beginning or fabricating any work. Do not scale these drawings.
COPYRIGHT
Aria Group Architects, Inc. shall retain all common law, statutory and other reserved rights. These drawings and related documents shall not be duplicated, disclosed or otherwise without written consent of Aria Group Architects, Inc.

NO.	DATE	REVISIONS
06/16/25	PUD RESUBMISSION	
05/15/25	PUD RESUBMISSION	

Drawing Title
EXTERIOR
ELEVATIONS

Job No.
255901

Drawn
Author

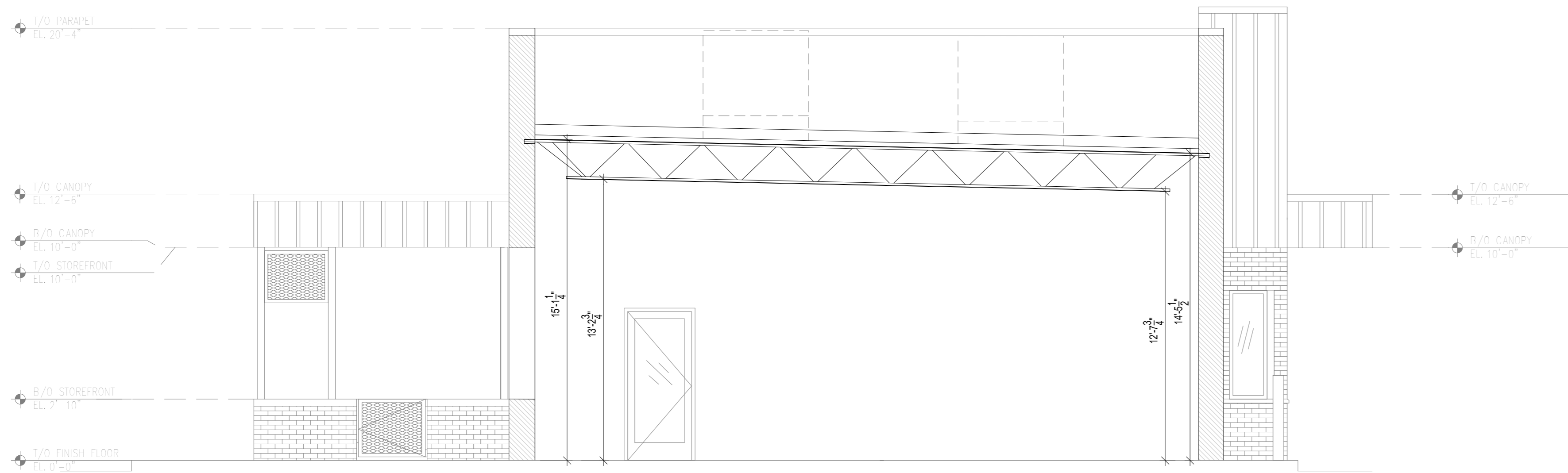
Scale
As indicated

Date
05/15/2025

Sheet No.

A4b

6/13/2025 8:45:17 AM Autodesk Docs://255901-GUZMAN Y GOMEZ - SOUTH NAPERVILLE, IL/255901_R03_A_GUZMAN Y GOMEZ-SOUTH NAPERVILLE.rvt



1 NORTH/SOUTH BUILDING SECTION
1/4" = 1'-0"

NOTE: PARAPET HEIGHT WILL BE DESIGNED TO SCREEN ALL ROOFTOP EQUIPMENT FROM PUBLIC VIEW.



844 S RTE 59
NAPERVILLE, IL 60540

FIELD VERIFICATION
Contractor shall verify all figured dimensions and conditions at the job site and notify Aria Group Architects, Inc. of any dimensional errors, omissions or discrepancies before beginning or fabricating any work. Do not scale these drawings.

COPYRIGHT
Aria Group Architects, Inc. shall retain all common law, statutory and other reserved rights. These drawings and related documents shall not be duplicated, disclosed or otherwise without written consent of Aria Group Architects, Inc.

	06/16/25	PUD RESUBMISSION
	05/15/25	PUD RESUBMISSION
NO.	DATE	REMARKS
REVISIONS		

Drawing Title
**BUILDING
SECTION**

Job No.
255901

Drawn
Author

Scale
1/4" = 1'-0"

Date
05/15/2025

Sheet No.
A5

6/13/2025 8:45:18 AM Autodesk Docs://255901-GUZMAN Y GOMEZ - SOUTH NAPERVILLE, IL/255901_R03_A_GUZMAN Y GOMEZ-SOUTH NAPERVILLE.rvt



2 NORTH ELEVATION AT PATIO
1/2" = 1'-0"



1 NORTH ELEVATION
1/2" = 1'-0"



844 S RTE 59
NAPERVILLE, IL 60540

FIELD VERIFICATION
Contractor shall verify all figured dimensions and conditions at the job site and notify Aria Group Architects, Inc. of any dimensional errors, omissions or discrepancies before beginning or fabricating any work. Do not scale these drawings.

COPYRIGHT
Aria Group Architects, Inc. shall retain all common law, statutory and other reserved rights. These drawings and related documents shall not be duplicated, disclosed or otherwise without written consent of Aria Group Architects, Inc.

	06/16/25	PUD RESUBMISSION
	05/15/25	PUD RESUBMISSION
O.	DATE	REMARKS
REVISIONS		

Drawing Title
**EXTERIOR
ELEVATIONS
RENDERINGS**

Job No. 255901	Drawn Author
-------------------	-----------------

Scale 1/2" = 1'-0"	Date 05/15/2025
-----------------------	--------------------

Sheet No.
A6a

