

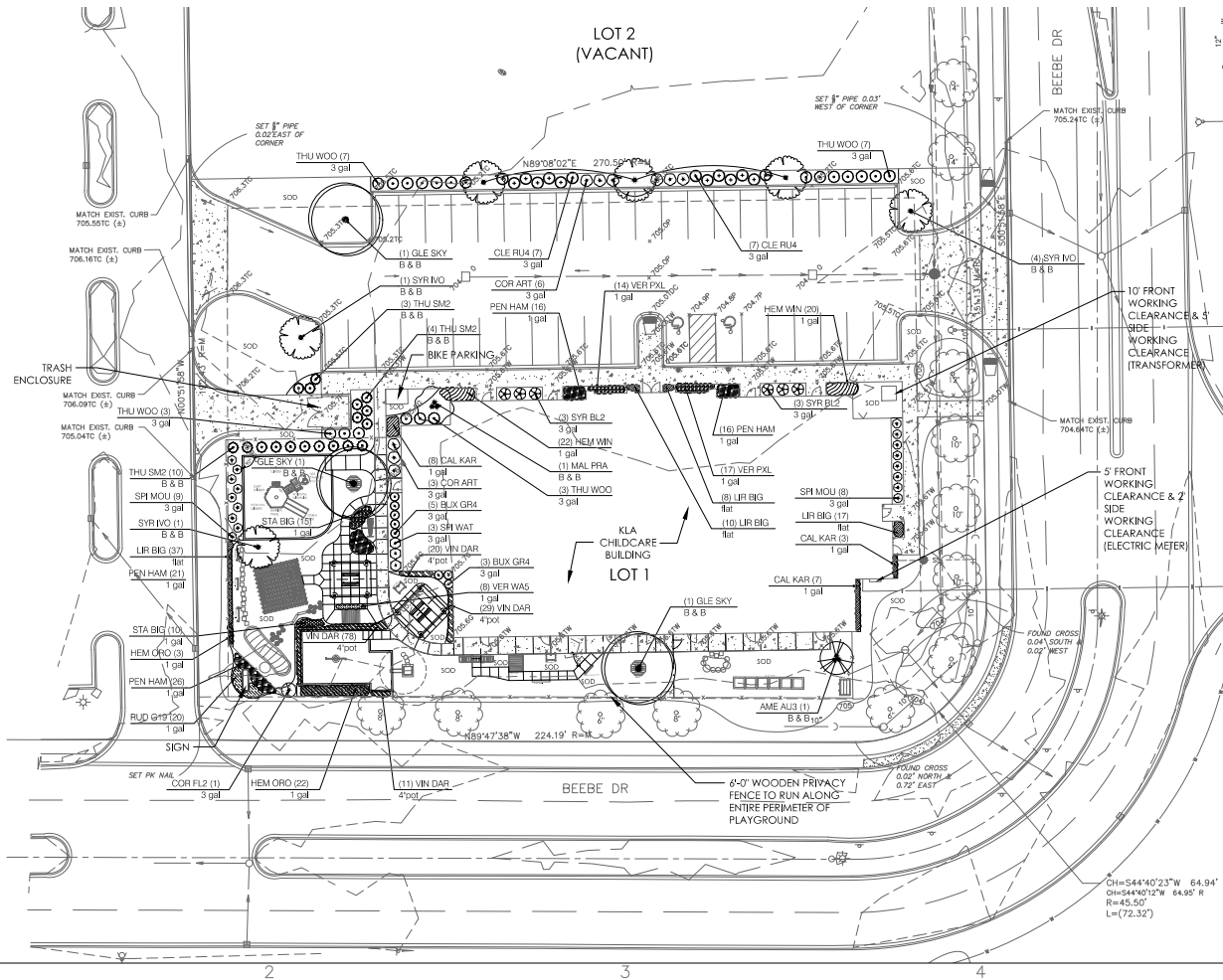
NOTES:  
 1) PER SECTION 5-3-10-10, INSTALLATION: ALL LANDSCAPING MATERIALS SHALL BE INSTALLED IN ACCORDANCE WITH THE PLANTING PROCEDURES APPROVED BY THE CITY ENGINEER. TREES SHALL BE SET BACK A MINIMUM OF TEN (10) FEET HORIZONTALLY FROM UTILITY STRUCTURES, INCLUDING, BUT NOT LIMITED TO, MANHOLES, VALVE VAULTS, VALVEBOXES, FIRE HYDRANTS, TRANSFORMERS AND SWITCH CANS. TREES SHALL BE SET BACK A MINIMUM OF FIVE (5) FEET HORIZONTALLY FROM SANITARY SEWER AND WATER SERVICE. (REFER TO CIVIL DRAWINGS PREPARED BY OTHERS).

2) PLANTING RESTRICTIONS: PLANT DURING ONE OF THE FOLLOWING PERIODS. COORDINATE PLANTING PERIODS WITH MAINTENANCE PERIODS TO PROVIDE REQUIRED MAINTENANCE FROM DATE OF SUBSTANTIAL COMPLETION.

1. SPRING PLANTING: 4/1 - 6/15
2. FALL PLANTING: 9/1 - 11/1

PLANT SCHEDULE

TREE	BOTANICAL / COMMON NAME	CONT.	SIZE	QTY	REMARKS
AME BL2	Andropogon canescens / Autumn Blance / Autumn Blance Serenovery	B & B	4/12	1	
GLE SKY	Gleditsia triacanthos / Skyline / Skyline Honey Locust	B & B	2.5/34	3	
MAL PRA	Malva x Pruniflora / Prairie Oats Maple	B & B	4/14	1	
SYR IVO	Syringa reticulata / Ivory Silk / Ivory Silk Japanese Tree Lilac	B & B	2.5/34	6	
THU SM2	Thuja occidentalis / Smaragd / Emerald Green Arborvitae	B & B	4/14	16	
SHRUBS	BOTANICAL / COMMON NAME	CONT.	SIZE	QTY	REMARKS
BLX GR4	Buxus x Green Mountain / Boxwood	3 gal	18/24" H	9	
CLE RL4	Callitriche dioica / Ruby Spice Summerweet	3 gal	18/24" H	14	
COR ART	Cornus sericea / Ruby Spice / Arctostaphylos	3 gal	18/24" H	9	
COR FL2	Cornus sericea / Blarinas / Yellow Tree Dogwood	3 gal	18/24" H	1	
SPR IVO	Spiraea japonica / Anthony Waterer / Anthony Waterer Spirea	3 gal	18/24" H	3	
SPR MOU	Spiraea x bumalis / Goldmound / Gold Mound Spirea	3 gal	18/24" H	17	
SYR BL2	Syringa x Bloomerang / Bloomerang Series Lilac	3 gal	18/24" H	6	
THU WOO	Thuja occidentalis / Woodward / Woodward Arborvitae	3 gal	18/24" H	20	
SPRINKLERS	BOTANICAL / COMMON NAME	SIZE	SPACING	QTY	REMARKS
CAL KAR	Calliopsis x scutellaria / Soft Foamer / Feather Reed Grass	1 gal	24" oc.	16	
HEM CRO	Hemerocallis x Little Wine Cup / Little Wine Cup Day Lily	1 gal	18" oc.	42	
HEM CRO	Hemerocallis x Stella de Oro / Stella de Oro Day Lily	1 gal	24" oc.	25	
LIR BIG	Liriodendron / Big Blue / Big Blue Lily	flat	12" oc.	72	
PEN HAM	Panicum allagouense / Hamlet / Hamlet Dwarf Fountain Grass	1 gal	18" oc.	79	
RUD GR4	Rudbeckia hirta / Big Blue / Big Blue Lamb's Ear	1 gal	18" oc.	20	
STA BIG	Stachys byzantina / Blue Reflection / Black Eyed Susan	1 gal	18" oc.	20	
VER PXL	Veronica x Blue Reflection / Blue Reflection Creeping Speedwell	1 gal	18" oc.	31	
VER WAS	Veronica x Waspertown Blue / Waspertown Blue Creeping Speedwell	1 gal	18" oc.	8	
VIN DAR	Vincetoxicum / Dan's Blue / Dan's Blue Periwinkle	4 pot	12" oc.	158	
SCD	Premium Blagras Blend			9,000 SF (Advance)	



KLA SCHOOLS OF  
 NAPERVILLE CHILDCARE  
 FACILITY  
 NAPERVILLE, IL



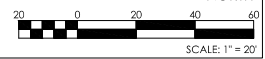
1167 Hobson Mill Drive  
 Naperville, Illinois 60540  
 Telephone: (630) 606-0776  
 www.design-perspectives.net

REV.	COMMENT	DATE
1	CITY REVIEW	4/19/21



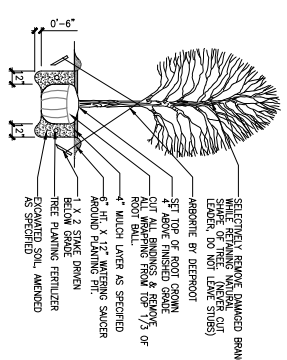
DATE: 3/15/2021  
 JOB NO.: 20-567  
 DRAWN BY: TS  
 CHECKED BY: TS

DRAWING TITLE:  
 LANDSCAPE PLAN

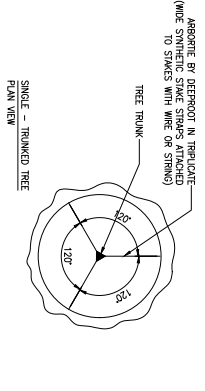


SHEET NO.:  
 LP-100  
 SHEET 1 OF 3  
 © DESIGN PERSPECTIVES INC. ALL RIGHTS RESERVED

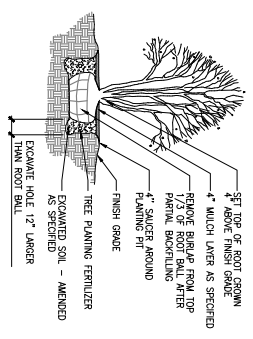
EXHIBIT E



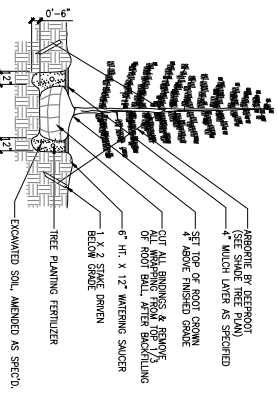
SHADE TREE PLANTING  
SCALE: 1/4" = 1'-0"



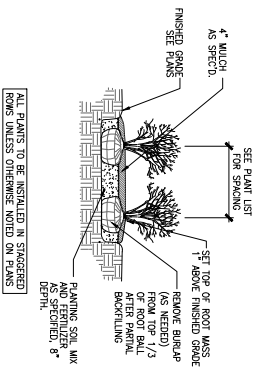
TREE CURING DETAIL - SHADE TREE  
SCALE: 1/4" = 1'-0"



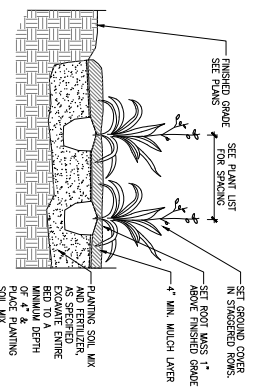
ORNAMENTAL TREE PLANTING  
SCALE: 1/4" = 1'-0"



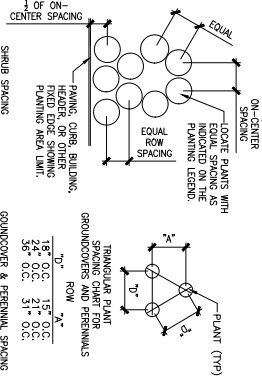
EVERGREEN TREE PLANTING  
SCALE: 1/4" = 1'-0"



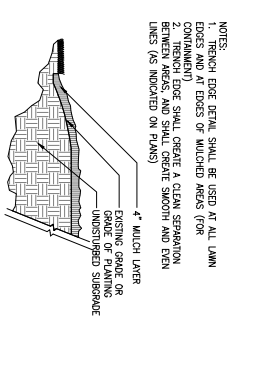
SHRUB PLANTING DETAIL  
SCALE: 1/4" = 1'-0"



GROUNDCOVER PLANTING  
SCALE: 1/4" = 1'-0"



PLANT SPACING DETAIL  
SCALE: 1/2" = 1'-0"



TRENCH EDGE DETAIL  
SCALE: 1" = 1'-0"

1. THE LANDSCAPE CONTRACTOR SHALL BE RESPONSIBLE FOR MAKING HIMSELF FAMILIAR WITH ALL UNDERGROUND UTILITIES AND STRUCTURES. SEE CONSTRUCTION NOTES.
2. DO NOT MULTIPLELY PROCEED WITH PLANTINGS AS DESIGNED WHEN IT IS OBVIOUS THAT OBSTRUCTIONS AND/OR GRADE DIFFERENCES EXIST THAT HAVE NOT BEEN BROUGHT TO THE ATTENTION OF THE PROJECT MANAGER. THE LANDSCAPE CONTRACTOR WILL BE HELD RESPONSIBLE FOR ANY NECESSARY REVISIONS AND COSTS DUE TO FAILURE TO ONE SUCH NOTIFICATION.
3. THE LANDSCAPE CONTRACTOR SHALL BE RESPONSIBLE FOR ANY COORDINATION WITH SUBCONTRACTORS AND/OR SUPPLIERS AS REQUIRED TO ACCOMPLISH PLANTING OPERATIONS.
4. THE LANDSCAPE CONTRACTOR IS TO RECEIVE THE SITE AT +/- 1/10TH OF AN INCH. THE CONTRACTOR SHALL BE RESPONSIBLE FOR OBTAINING ALL NECESSARY PERMITS AND APPROVALS FROM THE LOCAL HEALTH DEPARTMENT AND ALL OTHER AGENCIES BEFORE BEGINNING WORK.
5. REFER TO SPECIFICATIONS FOR PLANTING REQUIREMENTS, MATERIALS AND ELECTIONS.
6. ALL TREES SHALL BE TAGGED BY THE PROJECT MANAGER AT A UNIVERSITY-SELECTED BY THE LANDSCAPE CONTRACTOR OR IN THE PRESENCE OF THE PROJECT MANAGER.
7. FINAL LOCATION OF ALL PLANT MATERIAL SHALL BE SUBJECT TO APPROVAL OF THE PROJECT MANAGER PRIOR TO DIGGING ANY HOLES. THE LANDSCAPE CONTRACTOR IS RESPONSIBLE FOR OBTAINING PROJECT MANAGER ACTION TO THE PROJECT MANAGER PRIOR TO BEGINNING ANY PLANTING OPERATIONS TO THE SITES.
8. THE LANDSCAPE CONTRACTOR SHALL NOTIFY THE PROJECT MANAGER AT LEAST 48 HOURS IN ADVANCE PRIOR TO COMMENCEMENT OF WORK TO COORDINATE PROJECT OBSERVATION SCHEDULES.
9. AT CONFLICTS AMONG THE ACTUAL SIZE OF AREAS ON THE SITE AND THE DRAWINGS, CONTACT THE PROJECT MANAGER FOR RESOLUTION.
10. IF IT IS THE LANDSCAPE CONTRACTOR'S RESPONSIBILITY TO PLANT PLANTS FREE OF PESTS AND/OR DISEASES, PRE-SELECTED OR PROJECT MANAGER TAGGED AND CERTIFIED TEST AND DISEASE FREE AS THE LANDSCAPE CONTRACTOR'S OBLIGATION TO WARRANT ALL PLANT MATERIAL PER THE SPECIFICATIONS.

PLANTING NOTES

DT-14-10-2018

1 2 3 4 5

SHEET NO.: LP-500  
SHEET 2 OF 3  
DATE: 3/15/2021  
DRAWN BY: DS-687  
CHECKED BY: JS  
DRAWING TITLE: LANDSCAPE DETAILS



REV.	COMMENT	DATE

EXHIBIT E

KLA SCHOOLS OF NAPERVILLE CHILD CARE FACILITY NAPERVILLE, IL  
 Design Perspectives  
 1157 Madison Hill Drive  
 Naperville, Illinois 60563  
 Telephone: (630) 696-0776  
 www.design-perspectives.net

**GENERAL PLANTING SPECIFICATIONS:**

**PART 1 - GENERAL**

**1.01 DESCRIPTION:**

- Provide trees, shrubs, perennials and groundcovers as shown and specified. The work includes:
  - Supplying of material and equipment
  - Planting trees, shrubs, perennials and groundcovers
  - Watering and mulching
  - Staking and bracing
  - Maintenance
- The Contractor shall be responsible for determining the field and garden to be planted and report any discrepancies to the Owner's representative.

**1.02 QUALITY ASSURANCE:**

- Comply with the work requirements.
- Plant source indicated on drawings with "Standardized Plant" name as indicated by the list below. The Contractor shall verify that the plants are the same as those specified in the list below. The Contractor shall obtain the appropriate "Standardized Plant" certificate from the American Association of Nurserymen (AAN) or the American Association of Plant Industry (AAPI) and provide it to the Owner's representative. The Contractor shall also provide a list of the plants to be used on the project for a minimum of 60 days prior to the start of the planting season.
- All plant material shall be grown and raised within a 50-mile radius of the project location. A plant shall be removed if it is not raised within the specified area.
- Stock that is damaged, diseased, or that is not the correct size, color, or form shall be rejected. The Contractor shall be responsible for identifying and rejecting any such material. The Contractor shall be responsible for identifying and rejecting any such material. The Contractor shall be responsible for identifying and rejecting any such material.
- At all times during the planting season, the Contractor shall maintain a log of all plants used, including the date of planting, the name of the plant, and the source of the plant. The Contractor shall be responsible for maintaining this log.
- At all times during the planting season, the Contractor shall maintain a log of all plants used, including the date of planting, the name of the plant, and the source of the plant. The Contractor shall be responsible for maintaining this log.

**1.03 DELIVERY, STORAGE & HANDLING:**

- Delivery shall be delivered in original, wrapped, and undamaged packaging. Containers shall display the name and manufacturer's name. Shrub material in a new or used plastic bag shall be rejected.
- Tree and shrub material shall be delivered to the project site in a timely manner. The Contractor shall be responsible for identifying and rejecting any such material. The Contractor shall be responsible for identifying and rejecting any such material. The Contractor shall be responsible for identifying and rejecting any such material.
- Plant material shall be stored in a secure and protected area. The Contractor shall be responsible for identifying and rejecting any such material. The Contractor shall be responsible for identifying and rejecting any such material. The Contractor shall be responsible for identifying and rejecting any such material.
- Plant material shall be stored in a secure and protected area. The Contractor shall be responsible for identifying and rejecting any such material. The Contractor shall be responsible for identifying and rejecting any such material. The Contractor shall be responsible for identifying and rejecting any such material.

**1.04 PROJECT CONDITIONS:**

- It shall be the Contractor's responsibility to obtain and protect all existing plants and trees on the project site. The Contractor shall be responsible for identifying and rejecting any such material. The Contractor shall be responsible for identifying and rejecting any such material. The Contractor shall be responsible for identifying and rejecting any such material.
- It shall be the Contractor's responsibility to obtain and protect all existing plants and trees on the project site. The Contractor shall be responsible for identifying and rejecting any such material. The Contractor shall be responsible for identifying and rejecting any such material. The Contractor shall be responsible for identifying and rejecting any such material.
- It shall be the Contractor's responsibility to obtain and protect all existing plants and trees on the project site. The Contractor shall be responsible for identifying and rejecting any such material. The Contractor shall be responsible for identifying and rejecting any such material. The Contractor shall be responsible for identifying and rejecting any such material.
- It shall be the Contractor's responsibility to obtain and protect all existing plants and trees on the project site. The Contractor shall be responsible for identifying and rejecting any such material. The Contractor shall be responsible for identifying and rejecting any such material. The Contractor shall be responsible for identifying and rejecting any such material.

**1.05 PRELIMINARY ACCEPTANCE:**

- All plants shall be inspected by the Contractor prior to the start of the planting season. The Contractor shall be responsible for identifying and rejecting any such material. The Contractor shall be responsible for identifying and rejecting any such material. The Contractor shall be responsible for identifying and rejecting any such material.
- All plants shall be inspected by the Contractor prior to the start of the planting season. The Contractor shall be responsible for identifying and rejecting any such material. The Contractor shall be responsible for identifying and rejecting any such material. The Contractor shall be responsible for identifying and rejecting any such material.

**1.06 WARRANTY:**

- All plants shall be inspected by the Contractor prior to the start of the planting season. The Contractor shall be responsible for identifying and rejecting any such material. The Contractor shall be responsible for identifying and rejecting any such material. The Contractor shall be responsible for identifying and rejecting any such material.
- All plants shall be inspected by the Contractor prior to the start of the planting season. The Contractor shall be responsible for identifying and rejecting any such material. The Contractor shall be responsible for identifying and rejecting any such material. The Contractor shall be responsible for identifying and rejecting any such material.

**PART 2 - PRODUCTS**

**2.01 PLANT MATERIALS:**

- Plants shall be inspected by the Contractor prior to the start of the planting season. The Contractor shall be responsible for identifying and rejecting any such material. The Contractor shall be responsible for identifying and rejecting any such material. The Contractor shall be responsible for identifying and rejecting any such material.
- Plants shall be inspected by the Contractor prior to the start of the planting season. The Contractor shall be responsible for identifying and rejecting any such material. The Contractor shall be responsible for identifying and rejecting any such material. The Contractor shall be responsible for identifying and rejecting any such material.
- Plants shall be inspected by the Contractor prior to the start of the planting season. The Contractor shall be responsible for identifying and rejecting any such material. The Contractor shall be responsible for identifying and rejecting any such material. The Contractor shall be responsible for identifying and rejecting any such material.
- Plants shall be inspected by the Contractor prior to the start of the planting season. The Contractor shall be responsible for identifying and rejecting any such material. The Contractor shall be responsible for identifying and rejecting any such material. The Contractor shall be responsible for identifying and rejecting any such material.

**2.02 ACCESSORIES:**

- Topsoil shall be inspected by the Contractor prior to the start of the planting season. The Contractor shall be responsible for identifying and rejecting any such material. The Contractor shall be responsible for identifying and rejecting any such material. The Contractor shall be responsible for identifying and rejecting any such material.
- Topsoil shall be inspected by the Contractor prior to the start of the planting season. The Contractor shall be responsible for identifying and rejecting any such material. The Contractor shall be responsible for identifying and rejecting any such material. The Contractor shall be responsible for identifying and rejecting any such material.
- Topsoil shall be inspected by the Contractor prior to the start of the planting season. The Contractor shall be responsible for identifying and rejecting any such material. The Contractor shall be responsible for identifying and rejecting any such material. The Contractor shall be responsible for identifying and rejecting any such material.
- Topsoil shall be inspected by the Contractor prior to the start of the planting season. The Contractor shall be responsible for identifying and rejecting any such material. The Contractor shall be responsible for identifying and rejecting any such material. The Contractor shall be responsible for identifying and rejecting any such material.

**PART 3 - INSTALLATION OF PLANT MATERIAL**

**3.01 FIELD VERIFICATION:**

- Current proposed planting areas and conditions of installation. Do not start planting until after the site has been inspected by the Contractor.
- Current proposed planting areas and conditions of installation. Do not start planting until after the site has been inspected by the Contractor.
- Current proposed planting areas and conditions of installation. Do not start planting until after the site has been inspected by the Contractor.
- Current proposed planting areas and conditions of installation. Do not start planting until after the site has been inspected by the Contractor.

**3.02 PREPARATION:**

- Planting shall be performed by the Contractor. The Contractor shall be responsible for identifying and rejecting any such material. The Contractor shall be responsible for identifying and rejecting any such material. The Contractor shall be responsible for identifying and rejecting any such material.
- Planting shall be performed by the Contractor. The Contractor shall be responsible for identifying and rejecting any such material. The Contractor shall be responsible for identifying and rejecting any such material. The Contractor shall be responsible for identifying and rejecting any such material.
- Planting shall be performed by the Contractor. The Contractor shall be responsible for identifying and rejecting any such material. The Contractor shall be responsible for identifying and rejecting any such material. The Contractor shall be responsible for identifying and rejecting any such material.
- Planting shall be performed by the Contractor. The Contractor shall be responsible for identifying and rejecting any such material. The Contractor shall be responsible for identifying and rejecting any such material. The Contractor shall be responsible for identifying and rejecting any such material.

**3.03 PLANTING PROCEDURES:**

- Planting shall be performed by the Contractor. The Contractor shall be responsible for identifying and rejecting any such material. The Contractor shall be responsible for identifying and rejecting any such material. The Contractor shall be responsible for identifying and rejecting any such material.
- Planting shall be performed by the Contractor. The Contractor shall be responsible for identifying and rejecting any such material. The Contractor shall be responsible for identifying and rejecting any such material. The Contractor shall be responsible for identifying and rejecting any such material.
- Planting shall be performed by the Contractor. The Contractor shall be responsible for identifying and rejecting any such material. The Contractor shall be responsible for identifying and rejecting any such material. The Contractor shall be responsible for identifying and rejecting any such material.
- Planting shall be performed by the Contractor. The Contractor shall be responsible for identifying and rejecting any such material. The Contractor shall be responsible for identifying and rejecting any such material. The Contractor shall be responsible for identifying and rejecting any such material.

**EXHIBIT E**

REV.	COMMENT	DATE



SHEET NO.:  
**LP-501**  
SHEET 3 OF 3  
DATE: 3/16/2021  
DRAWING TITLE:  
LANDSCAPE  
SPECIFICATIONS  
CHECKED BY: JS

PROJECT NO.:  
18-031  
PROJECT NAME:  
NAPERVILLE CHILDCARE  
FACILITY  
PROJECT LOCATION:  
1800 N. WASHINGTON  
NAPERVILLE, IL 60563

DESIGNER:  
DESIGN PERSPECTIVES  
BRANFORD & BRINKLEY  
1167 MADISON HILL DRIVE  
NAPERVILLE, IL 60563  
TELEPHONE: (630) 696-0776  
WWW.DESIGNPERSPECTIVES.NET