

TYPICAL EXTERIOR MATERIALS

CEMENTITIOUS/
COMPOSITE
PANELS & TRIM

METAL COPING

WINDOW UNIT

CEMENTITIOUS/
COMPOSITE
PANELS & TRIM

FACE BRICK

CEMENTITIOUS/
COMPOSITE
PANELS & TRIM

ALUMINUM
STOREFRONT
SYSTEM



WEST ELEVATION



SOUTH ELEVATION

CEMENTITIOUS
PANELS & TRIM

FACE BRICK

CAST STONE



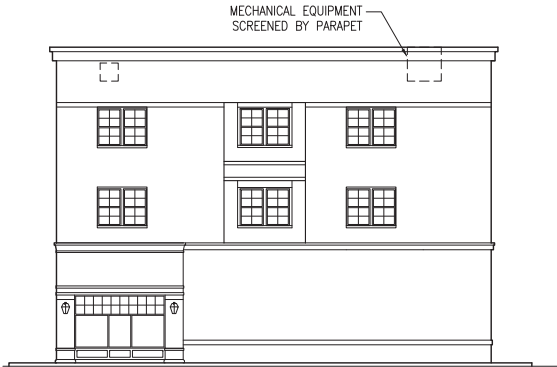
EAST ELEVATION



NORTH ELEVATION

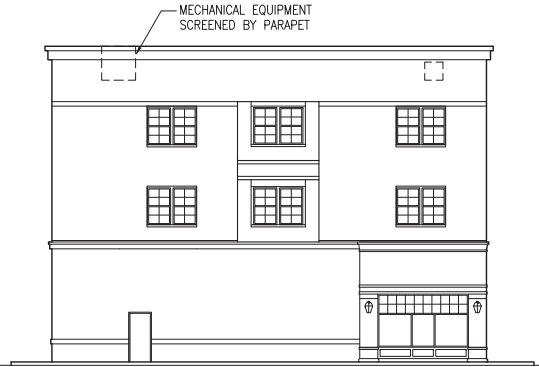


WEST ELEVATION

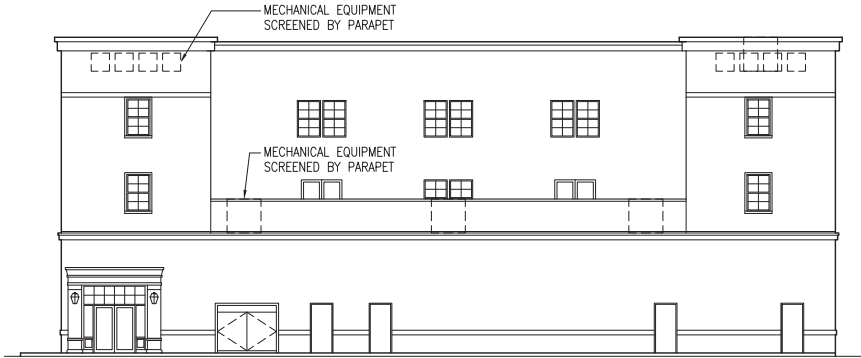


SOUTH ELEVATION

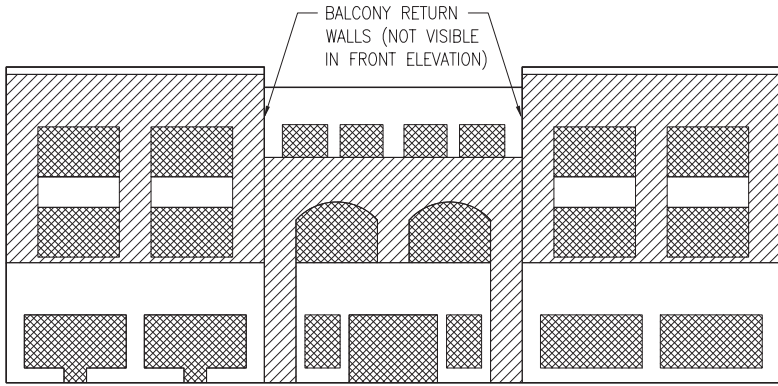
NOTE:
PER SECTION 5-10-3.12 ROOFTOP EQUIPMENT
WILL BE SCREENED BY PARAPETS ON ALL FOUR
SIDES. PARAPETS MAY BE ADJUSTED BASED ON
ACTUAL EQUIPMENT PROVIDED



NORTH ELEVATION

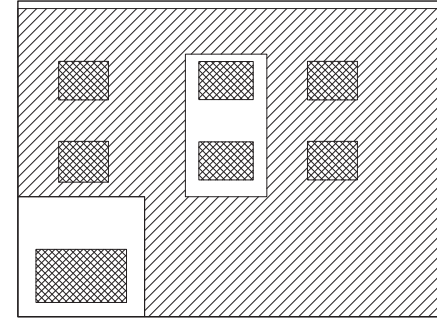


EAST ELEVATION



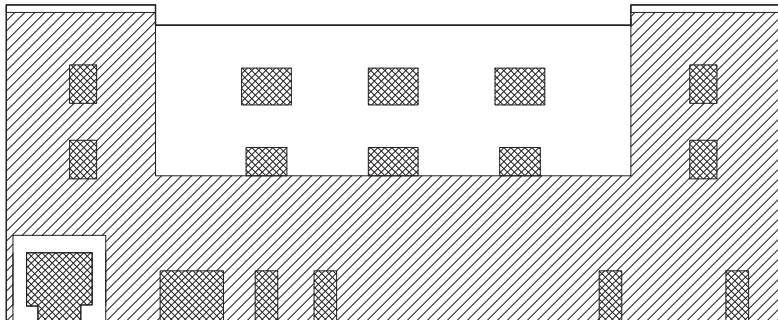
BALCONY RETURN AREA	254 SF
AREA OF WINDOWS & DOORS	0 SF
TOTAL FACADE AREA	254 SF
AREA OF MASONRY	00 SF (00%)
FRONT FACADE AREA	5,187 SF
AREA OF WINDOWS & DOORS	1,720 SF
TOTAL FACADE AREA	3,467 SF
AREA OF MASONRY	1,746 SF (50.3%)

FRONT ELEVATION (WEST)



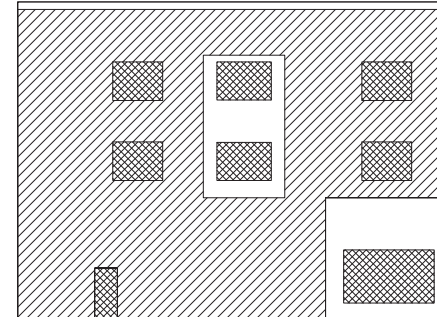
FACADE AREA	3,200 SF
AREA OF WINDOWS & DOORS	363 SF
TOTAL FACADE AREA	2,837 SF
AREA OF MASONRY	2,155 SF (80.0%)

SIDE ELEVATION (SOUTH)



FACADE AREA	5,918 SF
AREA OF WINDOWS & DOORS	546 SF
TOTAL FACADE AREA	5,372 SF
AREA OF MASONRY	3,062 SF (56.9%)

REAR ELEVATION (EAST)

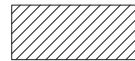


FACADE AREA	3,200 SF
AREA OF WINDOWS & DOORS	385 SF
TOTAL FACADE AREA	2,815 SF
AREA OF MASONRY	2,133 SF (75.7%)

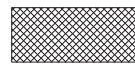
SIDE ELEVATION (NORTH)

EXTERIOR WALL MASONRY CALCULATION

	FACADE AREA (SF)	AREA OF MASONRY (SF)
WEST	3,467	1,746
BALCONY	254	0
SOUTH	2,837	2,155
EAST	5,372	3,062
NORTH	2,815	2,133
TOTAL	14,745	9,096



AREA OF 4" DEPTH FACE BRICK, STONE, OR SYNTHETIC STONE VENEER



AREA OF WINDOW & DOOR OPENINGS



AREA OF PAINTED OR COMPOSITE OR ALTERNATE EXTERIOR MATERIAL

AREA OF MASONRY REQD	7,373 SF (50%)
AREA OF MASONRY PROVIDED	9,096 SF (62%)
EXCESS MASONRY	1,723 SF (12%)

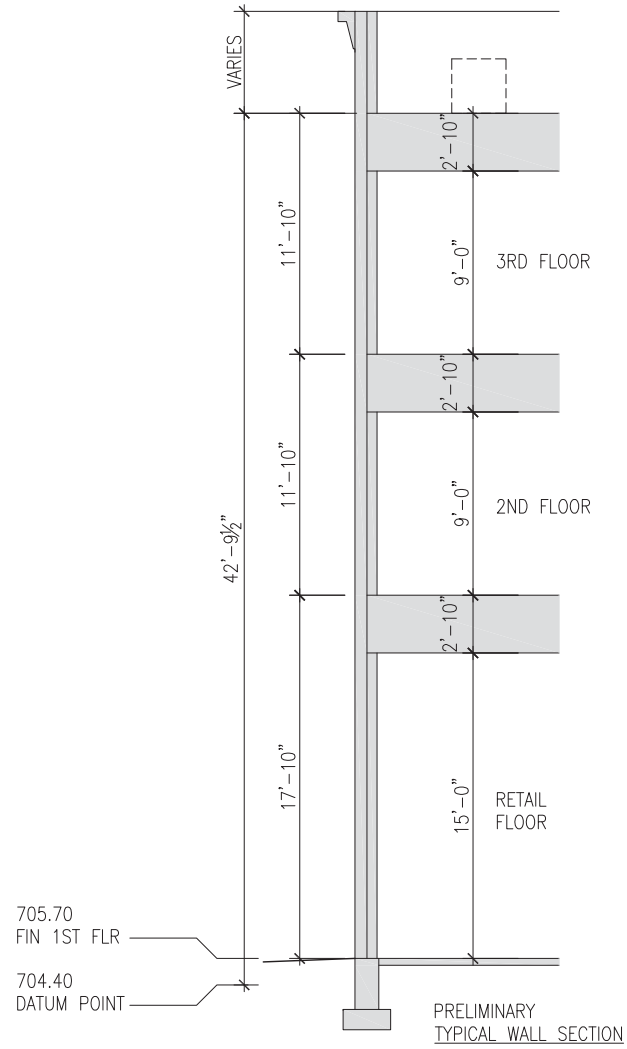


EXHIBIT E