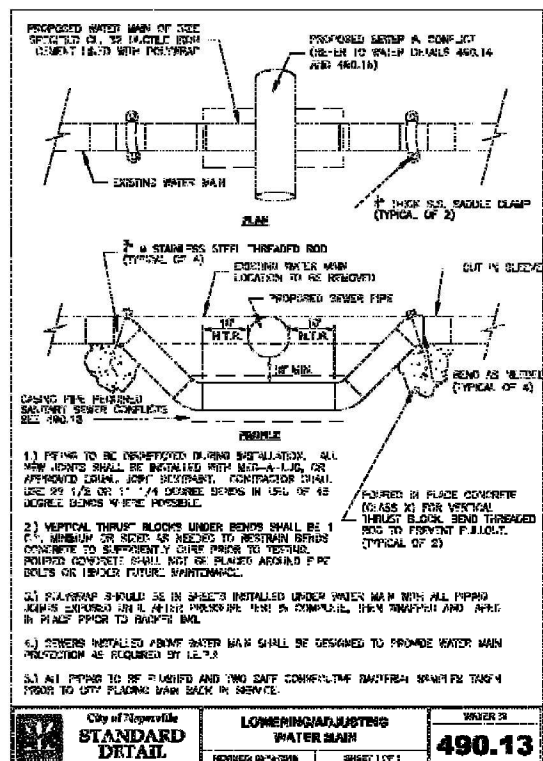
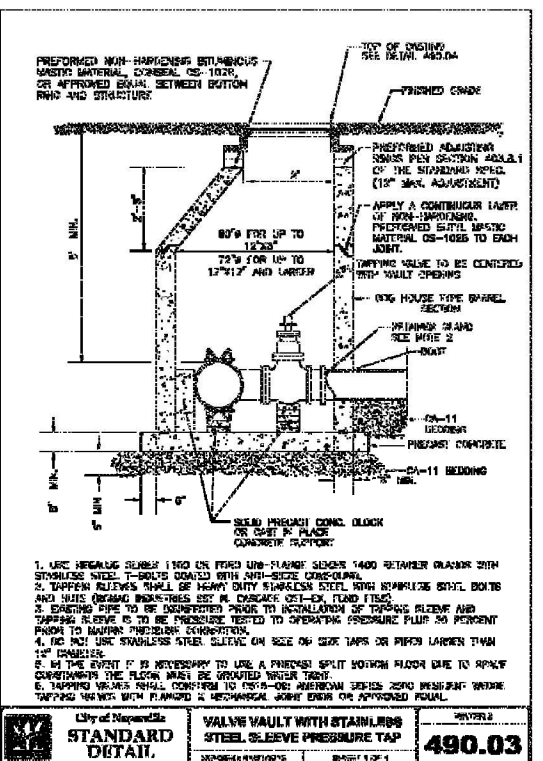


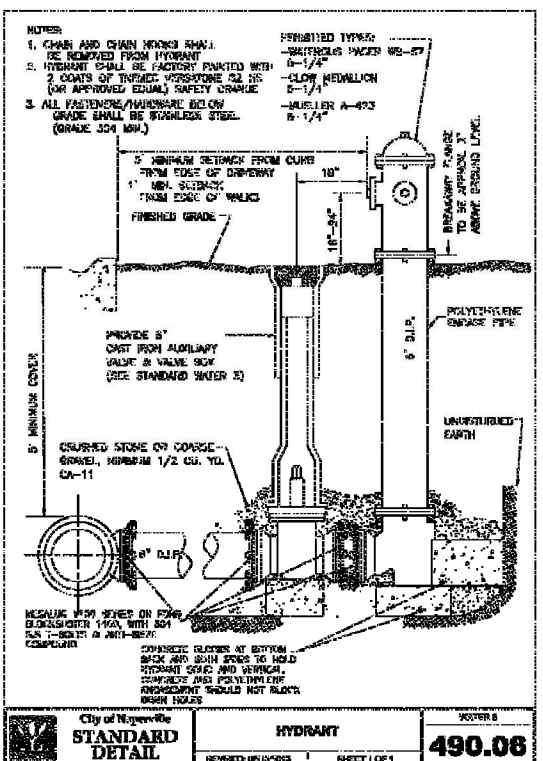
City of Naperville  
**STANDARD DETAIL**  
THRUST BLOCK  
REVISION: 04/2018  
SHEET 1 OF 1  
**490.11**



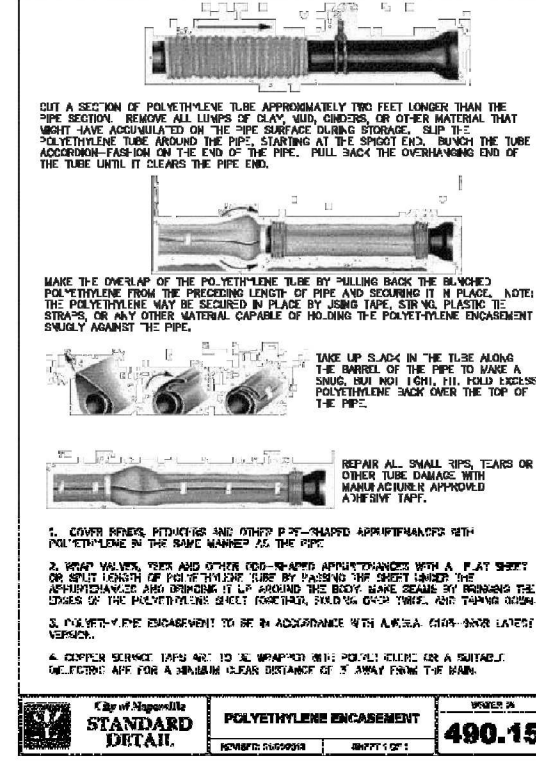
City of Naperville  
**STANDARD DETAIL**  
LOWERING/ADJUSTING WATER MAIN  
REVISION: 04/2018  
SHEET 1 OF 1  
**490.13**



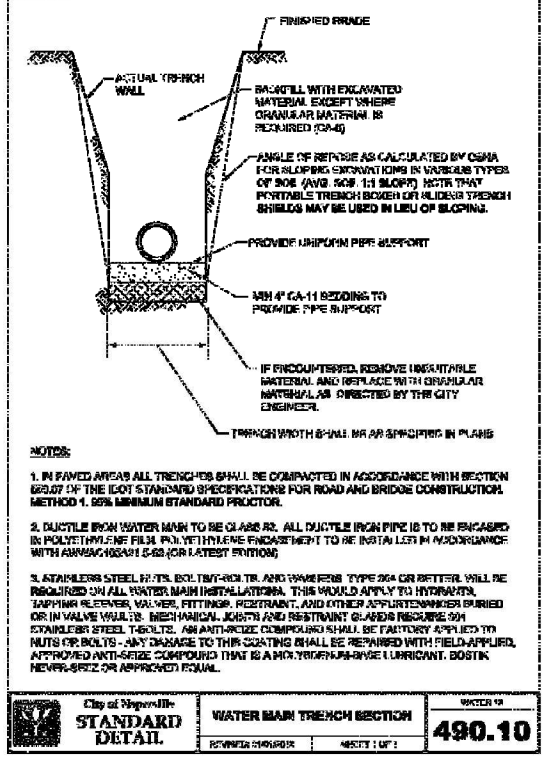
City of Naperville  
**STANDARD DETAIL**  
VALVE VAULT WITH STAIRCASE STEEL SLEEVE PRESSURE TAP  
REVISION: 04/2018  
SHEET 1 OF 1  
**490.03**



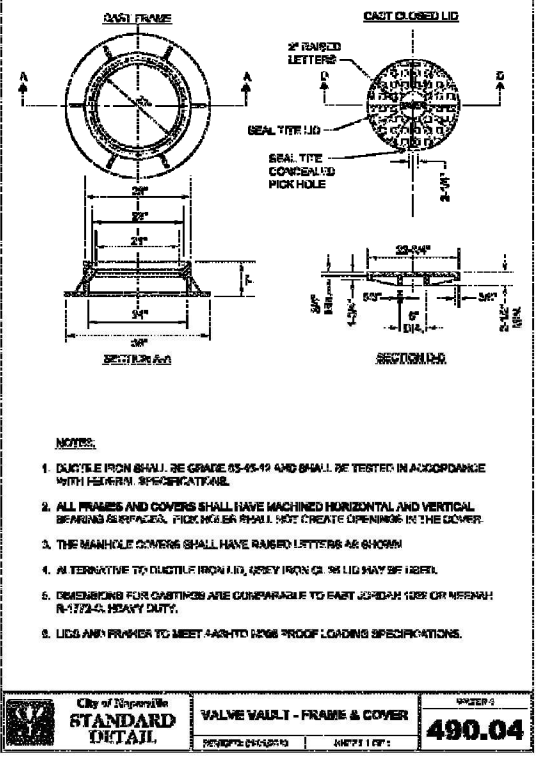
City of Naperville  
**STANDARD DETAIL**  
HYDRANT  
REVISION: 04/2018  
SHEET 1 OF 1  
**490.06**



City of Naperville  
**STANDARD DETAIL**  
POLYETHYLENE ENCASEMENT  
REVISION: 04/2018  
SHEET 1 OF 1  
**490.15**



City of Naperville  
**STANDARD DETAIL**  
WATER MAIN TRENCH SECTION  
REVISION: 04/2018  
SHEET 1 OF 1  
**490.10**



City of Naperville  
**STANDARD DETAIL**  
VALVE VAULT - FRAME & COVER  
REVISION: 04/2018  
SHEET 1 OF 1  
**490.04**

PREPARED FOR:

PREPARED BY:

DESIGNED BY: M.S.G.  
DRAWN BY: M.S.G.  
DATE: 08/08/2023  
PROJECT #: 1621

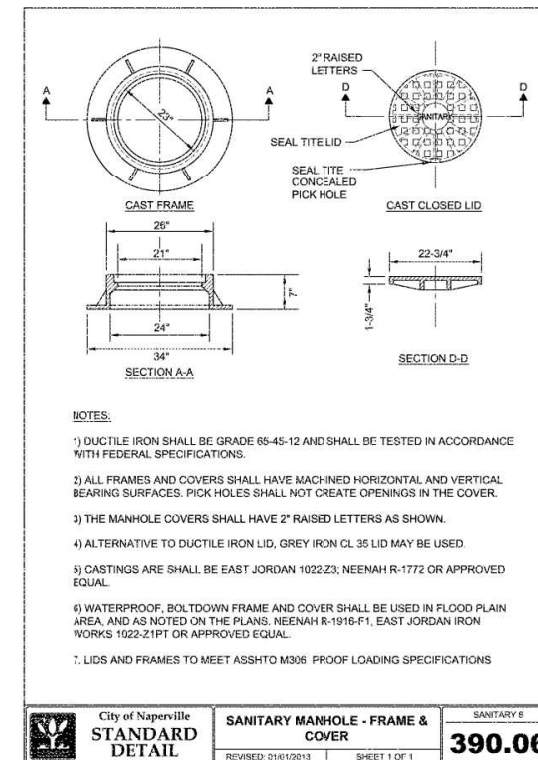
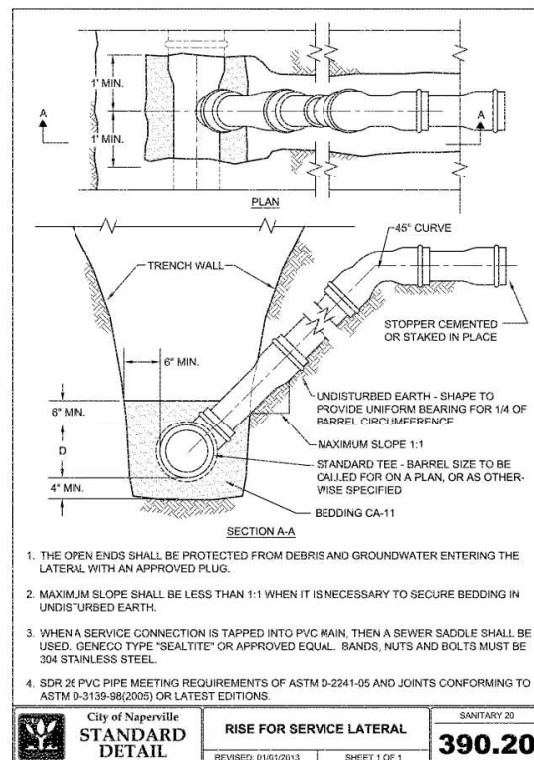
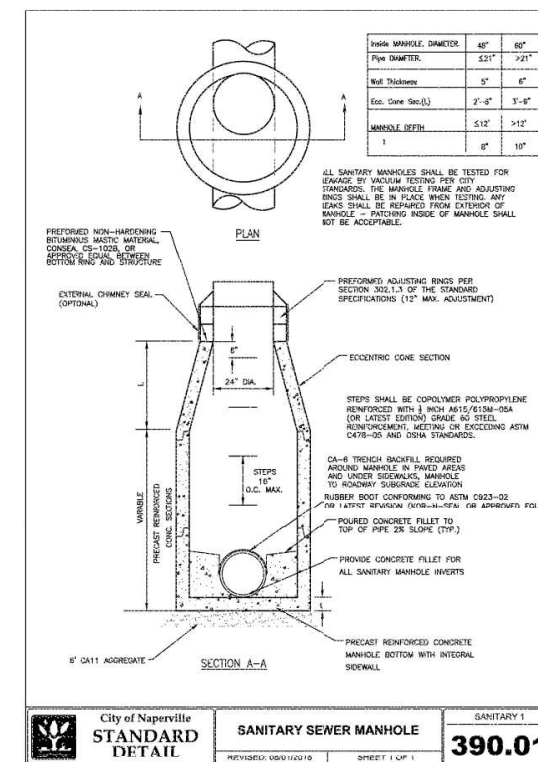
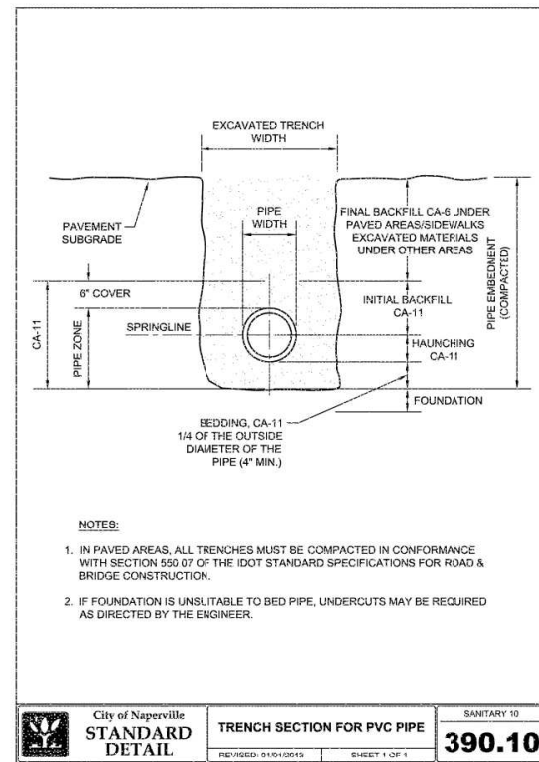
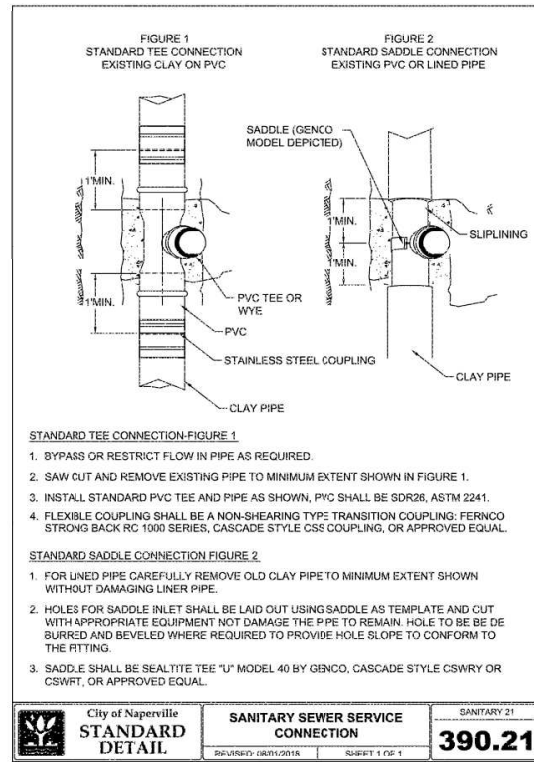
FOR:

**CAR WASH FACILITY**  
1492 W. OGDEN AVE.  
NAPERVILLE, IL 60540

DETAILS

SHEET NUMBER

**C-13**



PREPARED FOR:

PREPARED BY:

600 Business Highway  
Park Ridge, IL 60068  
PH: 847/698-6400  
Fax: 847/698-6401

NO.	DESCRIPTION	DATE
1	VILL PRELIM REV. #1	10-17-23
2	VILL PRELIM REV. #2	11-10-23

DESIGNED BY: M.S.E.  
DRAWN BY: K.S.B.  
DATE: 08/09/2023  
PROJECT #: 1021

**PRELIMINARY  
ENGINEERING**

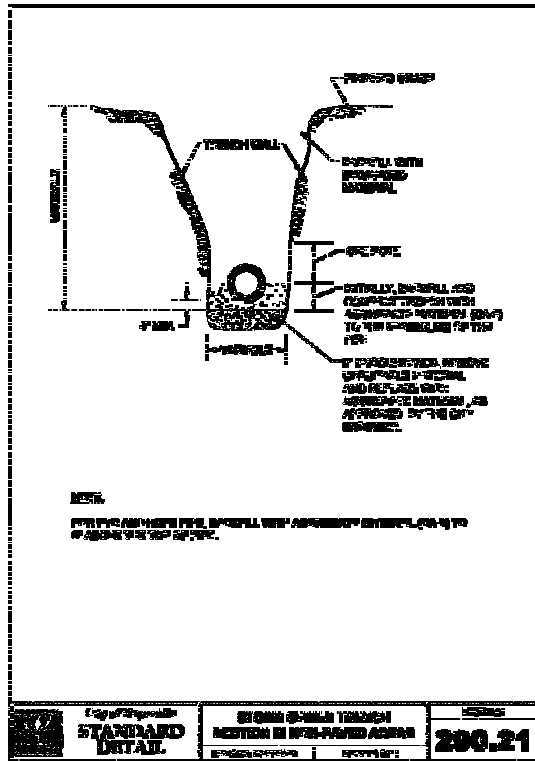
FOR

**CAR WASH  
FACILITY**

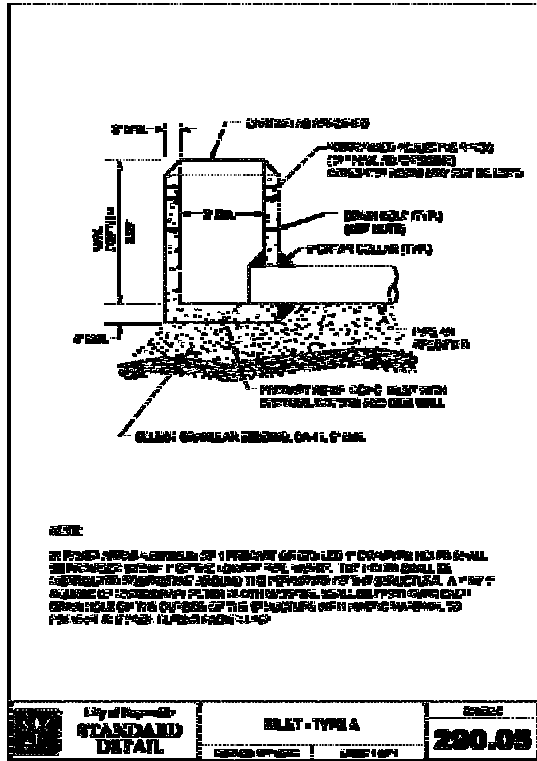
1492 W. OGDEN AVE.  
NAPERVILLE, IL 60540

**DETAILS**

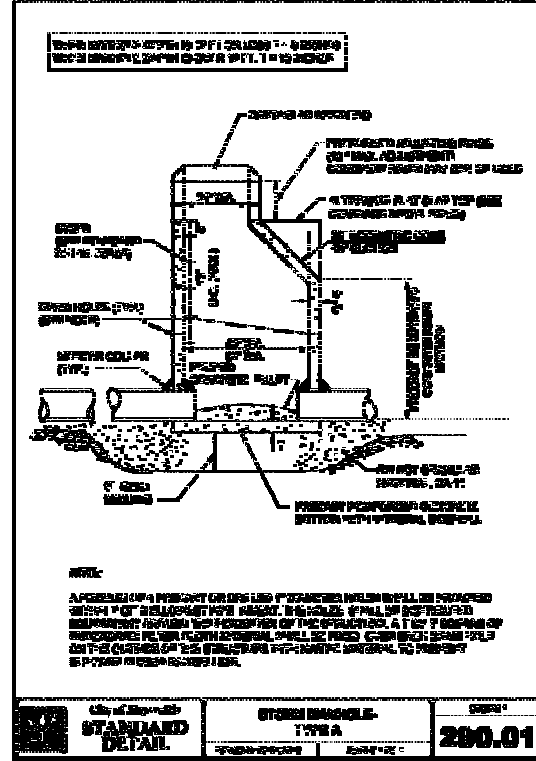
**C-14**



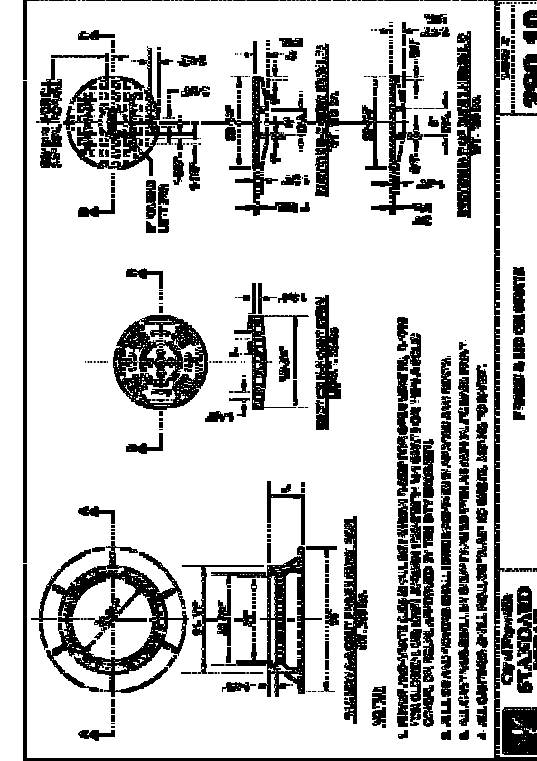
City of Springfield  
**STANDARD DETAIL**  
STORM SEWER THROUGH INLET IN PAVED AREA  
SECTION 05110 - ROADS AND HIGHWAYS  
PART 1.01  
**290.21**



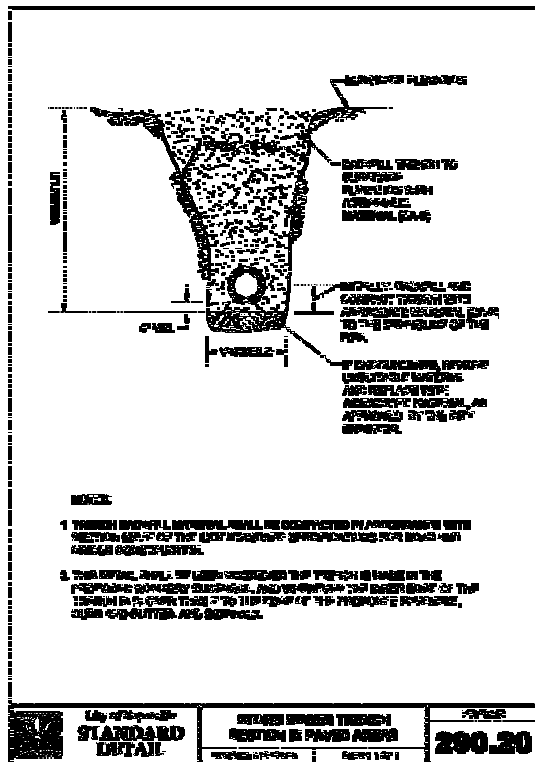
City of Springfield  
**STANDARD DETAIL**  
INLET - TYPE A  
SECTION 05110 - ROADS AND HIGHWAYS  
PART 1.01  
**290.05**



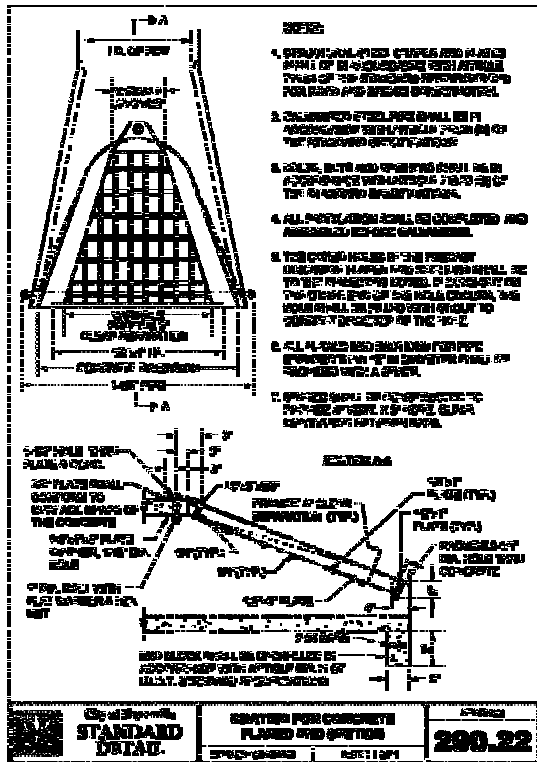
City of Springfield  
**STANDARD DETAIL**  
STORM SEWER - TYPE A  
SECTION 05110 - ROADS AND HIGHWAYS  
PART 1.01  
**290.01**



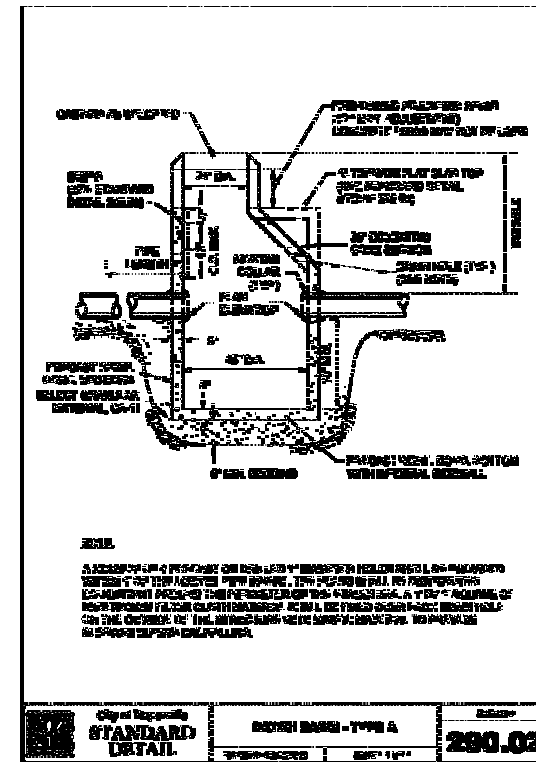
City of Springfield  
**STANDARD DETAIL**  
STORM SEWER - TYPE B  
SECTION 05110 - ROADS AND HIGHWAYS  
PART 1.01  
**290.10**



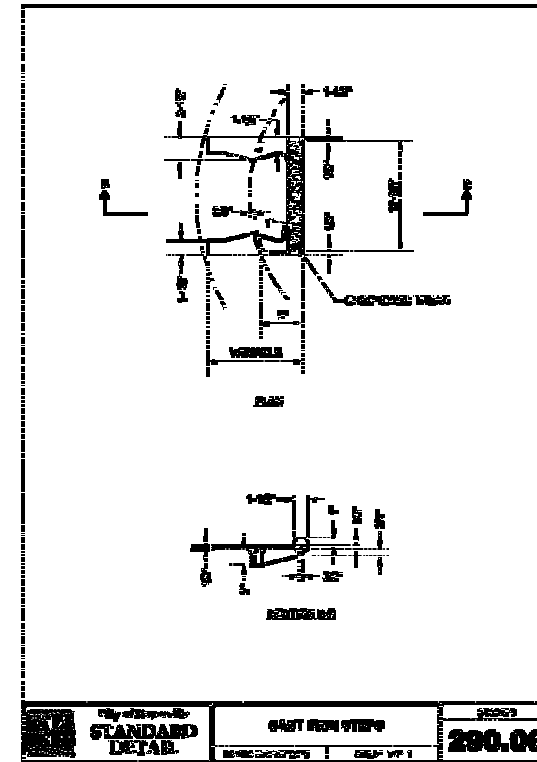
City of Springfield  
**STANDARD DETAIL**  
STORM SEWER THROUGH INLET IN PAVED AREA  
SECTION 05110 - ROADS AND HIGHWAYS  
PART 1.01  
**290.20**



City of Springfield  
**STANDARD DETAIL**  
STORM SEWER THROUGH INLET IN PAVED AREA  
SECTION 05110 - ROADS AND HIGHWAYS  
PART 1.01  
**290.22**



City of Springfield  
**STANDARD DETAIL**  
STORM SEWER - TYPE A  
SECTION 05110 - ROADS AND HIGHWAYS  
PART 1.01  
**290.02**



City of Springfield  
**STANDARD DETAIL**  
STORM SEWER - TYPE B  
SECTION 05110 - ROADS AND HIGHWAYS  
PART 1.01  
**290.06**

PREPARED FOR:

DESIGNED BY: M.S.L.  
DRAWN BY: K.S.L.  
DATE: 06/02/23  
PROJECT #: 1621

PRELIMINARY ENGINEERING

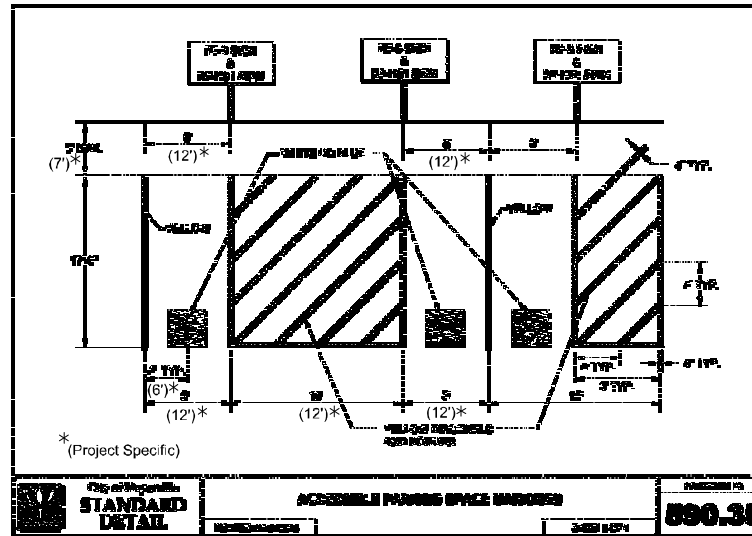
FOR

CAR WASH FACILITY  
1492 W. OGDEN AVE.  
NAPERVILLE, IL 60540

DESIGNED BY: M.S.L.  
DRAWN BY: K.S.L.  
DATE: 06/02/23  
PROJECT #: 1621

DETAILS

SHEET NUMBER  
**C-15**



City of Naperville  
**STANDARD**  
**DETAIL**  
 ACCESSIBLE PARKING SPACE BARRIERS  
 PROJECT NO. 590.38

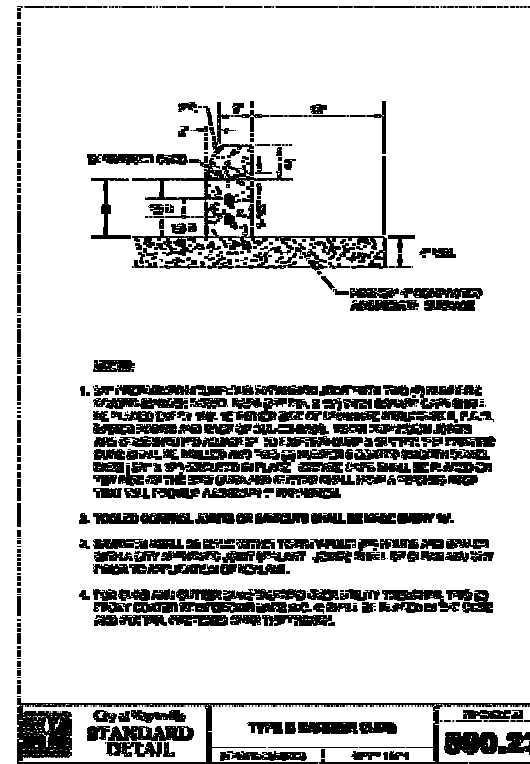
**ACCESSIBLE PARKING SPACE BARRIERS**

1. BARRIERS SHALL BE 7 FEET HIGH AND 12 FEET WIDE.
2. BARRIERS SHALL BE 12 FEET WIDE AND 7 FEET HIGH.
3. BARRIERS SHALL BE 12 FEET WIDE AND 7 FEET HIGH.
4. BARRIERS SHALL BE 12 FEET WIDE AND 7 FEET HIGH.
5. BARRIERS SHALL BE 12 FEET WIDE AND 7 FEET HIGH.

**2 BY ACCESSIBLE PARKING SPACE BARRIERS**

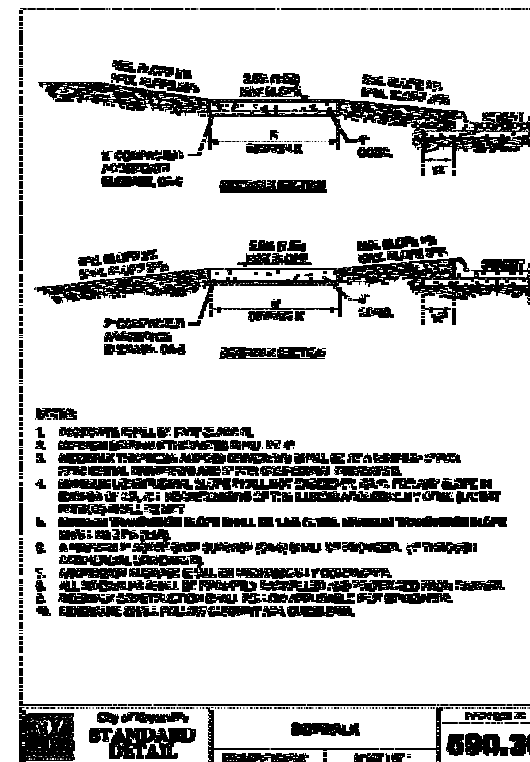
TYPE OF RIGHT OF WAY	MINIMUM NUMBER OF BARRIERS
1 TO 25	1
26 TO 50	2
51 TO 75	3
76 TO 100	4
101 TO 125	5
126 TO 150	6
151 TO 200	8
201 TO 250	10
251 TO 300	12
301 TO 350	15
351 TO 400	18
401 TO 450	21
451 TO 500	24
501 TO 550	27
551 TO 600	30
601 TO 650	33
651 TO 700	36
701 TO 750	39
751 TO 800	42
801 TO 850	45
851 TO 900	48
901 TO 950	51
951 TO 1000	54

City of Naperville  
**STANDARD**  
**DETAIL**  
 ACCESSIBLE PARKING SPACE BARRIERS  
 PROJECT NO. 590.38



- NOTES:**
1. CURB RAMP SHALL BE 48 INCHES WIDE AND 2 INCHES HIGH.
  2. CURB RAMP SHALL BE 1:12 SLOPE.
  3. CURB RAMP SHALL BE 2 INCHES HIGH.
  4. CURB RAMP SHALL BE 48 INCHES WIDE.

City of Naperville  
**STANDARD**  
**DETAIL**  
 TYPE B CURB RAMP  
 PROJECT NO. 590.23



- NOTES:**
1. CAR WASH SHALL BE 12 FEET WIDE.
  2. CAR WASH SHALL BE 7 FEET HIGH.
  3. CAR WASH SHALL BE 12 FEET WIDE.
  4. CAR WASH SHALL BE 7 FEET HIGH.
  5. CAR WASH SHALL BE 12 FEET WIDE.
  6. CAR WASH SHALL BE 7 FEET HIGH.
  7. CAR WASH SHALL BE 12 FEET WIDE.
  8. CAR WASH SHALL BE 7 FEET HIGH.
  9. CAR WASH SHALL BE 12 FEET WIDE.
  10. CAR WASH SHALL BE 7 FEET HIGH.

City of Naperville  
**STANDARD**  
**DETAIL**  
 CAR WASH FACILITY  
 PROJECT NO. 590.30

PREPARED FOR:  
**CAR WASH**  
 PRO Washers  
 Naperville, Illinois

PREPARED BY:  
**TERRA**  
 600 Business Highway  
 Park Ridge, IL 60068  
 PH: 847/698-6400  
 FAX: 847/698-6401

DATE: 08/08/2023  
 PROJECT #: 1621

DESIGNED BY: M.S.L.  
 DRAWN BY: K.S.B.  
 DATE: 08/08/2023  
 PROJECT #: 1621

PRELIMINARY ENGINEERING

FOR

CAR WASH FACILITY  
 1492 W. OGDEN AVE.  
 NAPERVILLE, IL 60540

DETAILS

SHEET NUMBER  
**C-16**