

**AERIAL VIEW:
LOOKING EAST TOWARDS THE TOWN HOMES FROM THE MALL SIDE**



**AERIAL VIEW:
LOOKING WEST TOWARDS THE MALL FROM THE TOWN HOMES SIDE**



COLORADO SPRUCE



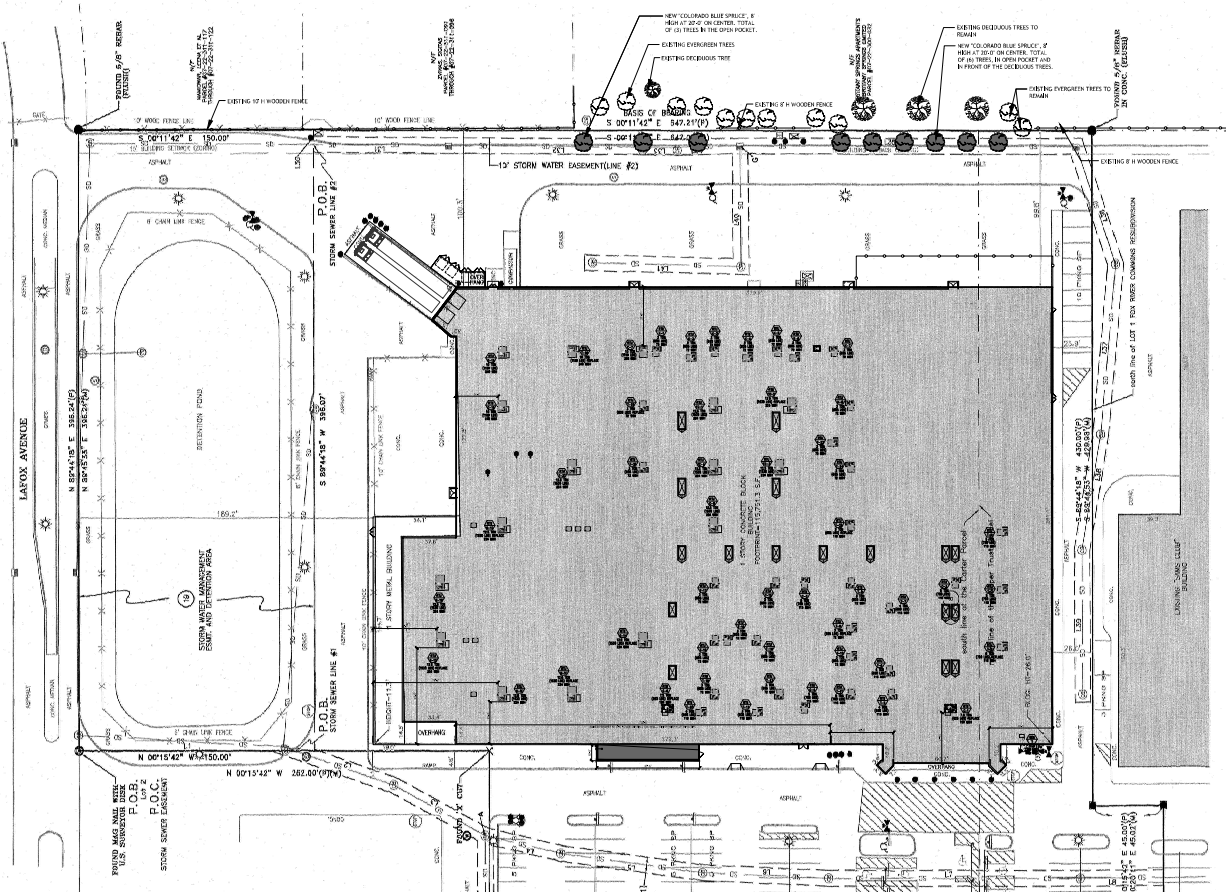
LOOKING TOWARDS SOUTH ALONG THE EAST PROPERTY LINE



LOOKING TOWARDS NORTH ALONG THE EAST PROPERTY LINE



LOOKING TOWARDS SOUTH ALONG THE EAST PROPERTY LINE



Document Record:

Issue Date	Revision
03/26/2015	1.0
03/26/2015	1.1
03/26/2015	1.2
03/26/2015	1.3
03/26/2015	1.4
03/26/2015	1.5
03/26/2015	1.6
03/26/2015	1.7
03/26/2015	1.8
03/26/2015	1.9
03/26/2015	2.0
03/26/2015	2.1
03/26/2015	2.2
03/26/2015	2.3
03/26/2015	2.4
03/26/2015	2.5
03/26/2015	2.6
03/26/2015	2.7
03/26/2015	2.8
03/26/2015	2.9
03/26/2015	3.0
03/26/2015	3.1
03/26/2015	3.2
03/26/2015	3.3
03/26/2015	3.4
03/26/2015	3.5
03/26/2015	3.6
03/26/2015	3.7
03/26/2015	3.8
03/26/2015	3.9
03/26/2015	4.0
03/26/2015	4.1
03/26/2015	4.2
03/26/2015	4.3
03/26/2015	4.4
03/26/2015	4.5
03/26/2015	4.6
03/26/2015	4.7
03/26/2015	4.8
03/26/2015	4.9
03/26/2015	5.0
03/26/2015	5.1
03/26/2015	5.2
03/26/2015	5.3
03/26/2015	5.4
03/26/2015	5.5
03/26/2015	5.6
03/26/2015	5.7
03/26/2015	5.8
03/26/2015	5.9
03/26/2015	6.0
03/26/2015	6.1
03/26/2015	6.2
03/26/2015	6.3
03/26/2015	6.4
03/26/2015	6.5
03/26/2015	6.6
03/26/2015	6.7
03/26/2015	6.8
03/26/2015	6.9
03/26/2015	7.0
03/26/2015	7.1
03/26/2015	7.2
03/26/2015	7.3
03/26/2015	7.4
03/26/2015	7.5
03/26/2015	7.6
03/26/2015	7.7
03/26/2015	7.8
03/26/2015	7.9
03/26/2015	8.0
03/26/2015	8.1
03/26/2015	8.2
03/26/2015	8.3
03/26/2015	8.4
03/26/2015	8.5
03/26/2015	8.6
03/26/2015	8.7
03/26/2015	8.8
03/26/2015	8.9
03/26/2015	9.0
03/26/2015	9.1
03/26/2015	9.2
03/26/2015	9.3
03/26/2015	9.4
03/26/2015	9.5
03/26/2015	9.6
03/26/2015	9.7
03/26/2015	9.8
03/26/2015	9.9
03/26/2015	10.0



IPA
PURCORT ARCHITECTS
2020 E. Algonquin Rd., Suite 302
Schwarzenburg, IL 60153
Tel: (847) 486-4332
Cell: (847) 757-1516
info@ipaurchitects.com
www.ipaurchitects.com

Mall of India
(Phase 1: Core & Shell)
Fox River Common's Shopping Center, 776 S. Route 59, Naperville, IL 60540

Issue Date: 03/26/2015
Drawn By: PJA
Sheet: A1.0
EXISTING SITE PLAN
A1.0
PAI PROJECT NUMBER: 161110.00