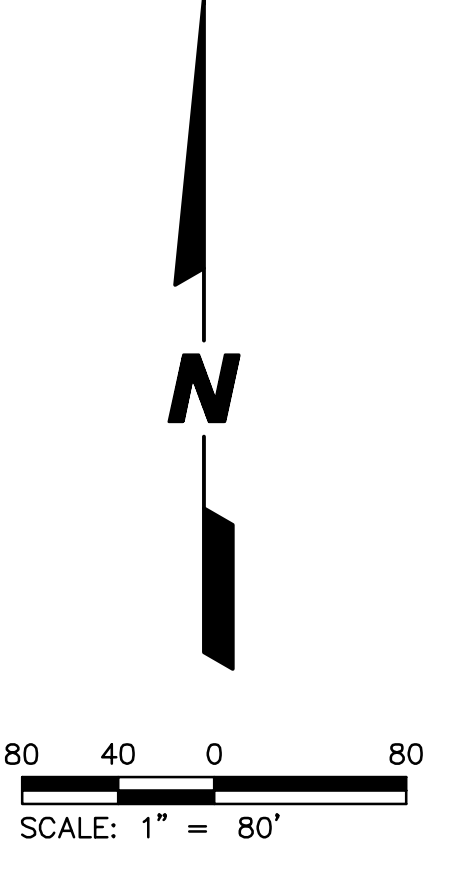
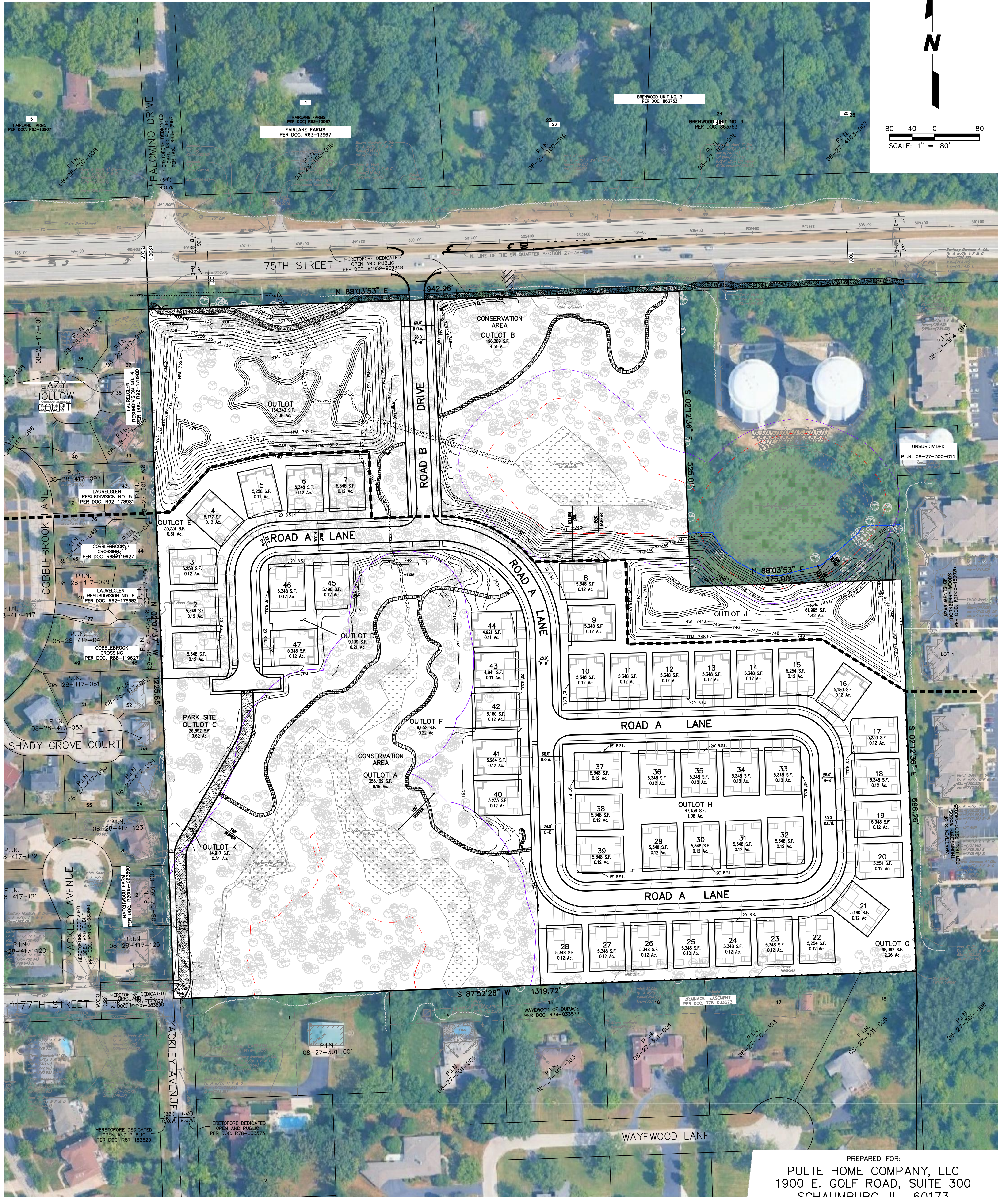


SITE PLAN FOR NAPERVILLE RIDGE

NAPERVILLE, ILLINOIS



SITE DATA

A. TOTAL AREA	32.522 AC. ±
B. PROPOSED ZONING	R2 PUD
C. INTERNAL R.O.W.	4.08 AC. ±
D. PARK SITE (OUTLOT C)	0.62 AC. ±
E. ACCESS EASEMENT (OUTLOT K)	0.34 AC. ±
F. P.U.D. OPEN SPACE (OUTLOTS A, B & I)	15.77 AC. ±
G. COMMON AREA (OUTLOTS D, E, F, G, H & J)	6.10 AC. ±
H. TOTAL UNITS	94
I. SETBACKS	
FRONT SETBACK	20 FT.
CORNER SIDE YARD SETBACK	15 FT.
PERIMETER REAR YARD SETBACK	20 FT.
J. BUILDING SEPARATION	
FRONT TO FRONT	100 FT.
FRONT TO REAR	50 FT.
SIDE TO SIDE	12 FT.
REAR TO SIDE	25 FT.
J. GROSS DENSITY	2.89 DU/AC.

PREPARED FOR:
PULTE HOME COMPANY, LLC
 1900 E. GOLF ROAD, SUITE 300
 SCHAUMBURG, IL 60173
 (847) 230-5400



CEMCON, Ltd.

Consulting Engineers, Land Surveyors & Planners
 2280 White Oak Circle, Suite 100
 Aurora, Illinois 60502-9675
 PH: 630.862.2100 FAX: 630.862.2199
 E-Mail: info@cemcon.com Website: www.cemcon.com

DISC NO.: 402181 FILE NAME: SITE PLAN
 DRAWN BY: LAL FLD. BK. / PG. NO.:
 COMPLETION DATE: 11-21-25 JOB NO.: 402181
 XREF: PREOVR PROJECT MANAGER: CRM
 03-18-26/LAL REVISED PER CITY REVIEW COMMENTS DATED 12/23/25
 04-24-26/LAL REVISED PER CITY REVIEW COMMENTS DATED 4/7/26
 05-22-26/LAL REVISED PER CITY REVIEW COMMENTS DATED 5/12/26

SITE PLAN FOR NAPERVILLE RIDGE
CITY OF NAPERVILLE PROJECT NO.: DEV 0167-2025

Copyright © 2025 Cemcon, Ltd. All rights reserved.