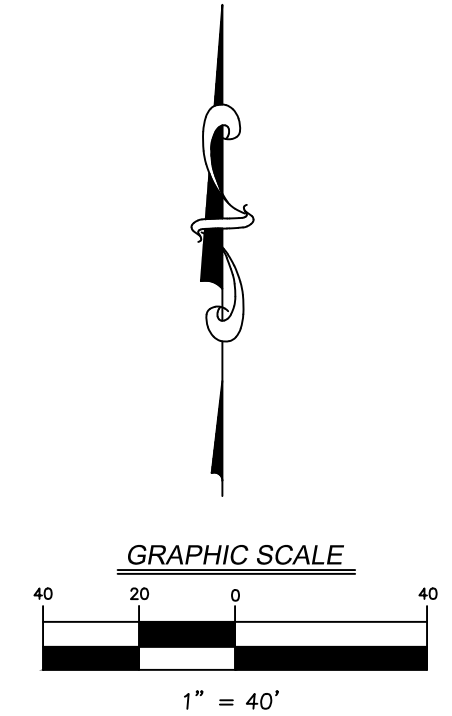


DEMOLITION LEGEND	
- X X X -	UTILITY LINE TO BE REMOVED
X	UTILITY STRUCTURE TO BE REMOVED



APPROVAL STAMPS:

No.	Date	Description
2	7/12/24	PZC PLAN RESUBMITTAL
1	6/7/24	PZC PLAN RESUBMITTAL

SUBMISSIONS & REVISIONS

OWNER
HINES
 444 W LAKE ST, SUITE 2400
 CHICAGO, IL 60606
 PHONE: 312.419.4900
 HINES.COM

ARCHITECT
ANTUNOVICH ASSOCIATES
 ARCHITECTURE • PLANNING • INTERIOR DESIGN
 224 WEST HURON STREET, SUITE 7E
 CHICAGO, ILLINOIS 60654
 MAIN: 312.266.7126
 FAX: 312.266.7123
 ANTUNOVICH.COM

STRUCTURAL ENGINEER

M.E.P. & F.P. ENGINEERS

CIVIL ENGINEER
V3 COMPANIES
 444 N WELLS ST, SUITE 602
 CHICAGO, IL 60654
 PHONE: 630.724.9200
 V3CO.COM

LANDSCAPE ARCHITECT
CONFLUENCE
 307 N MICHIGAN AVE, SUITE 601
 CHICAGO, IL 60601
 PHONE: 302.663.5498
 FAX: 312.288.8359
 THINKCONFLUENCE.COM

GENERAL CONTRACTOR

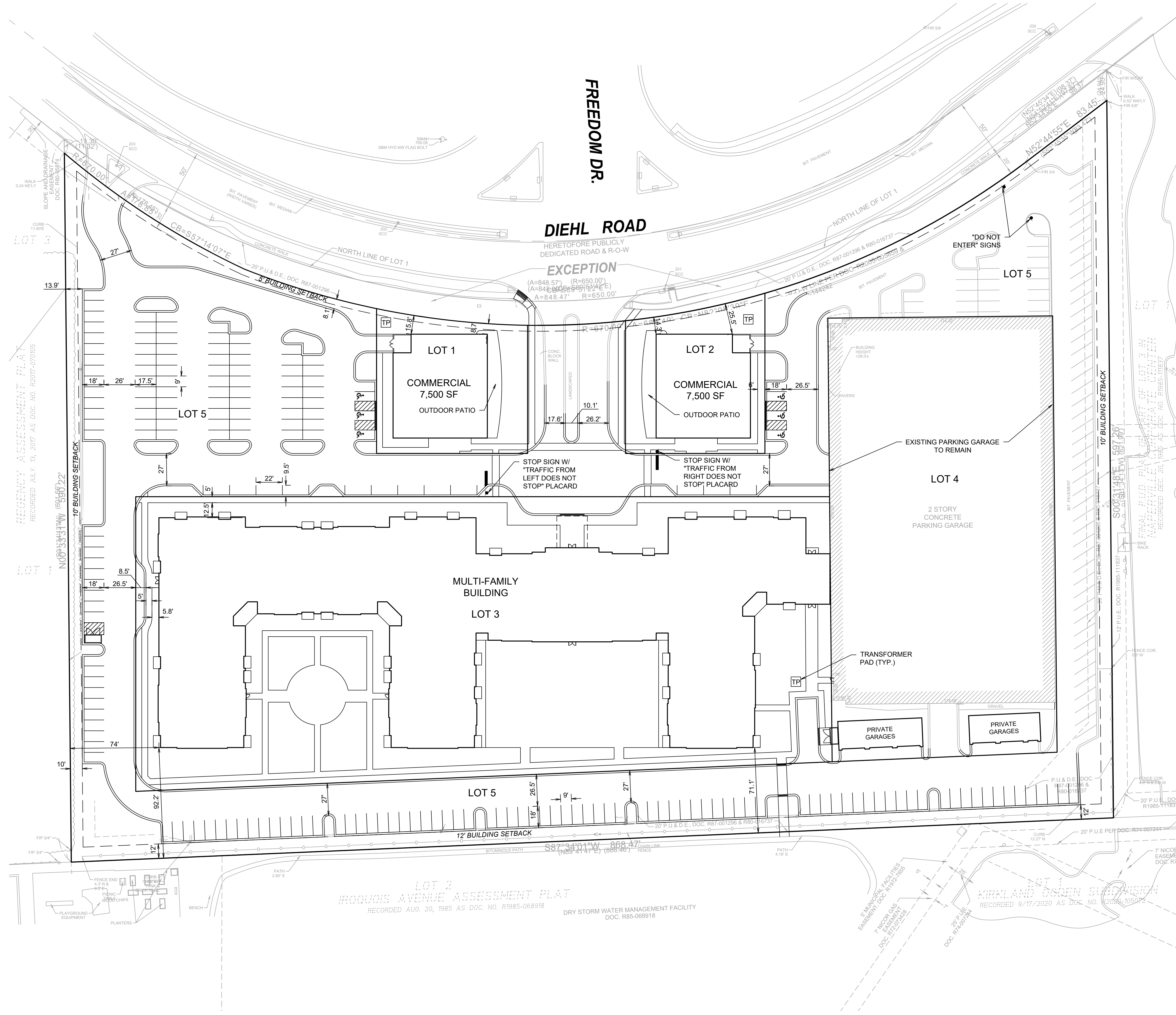
PROJECT LOCATION

1200 E DIEHL RD
 1200 E Diehl Rd Naperville, IL 60563

DRAWING TITLE
EXISTING CONDITIONS AND PRELIMINARY UTILITY DEMOLITION PLAN

SEAL	DATE: 02/26/24
	DRAWN BY: DB
	CHECKED BY: RS
	PROJECT NO: 240048

DRAWING NO:
C1.0



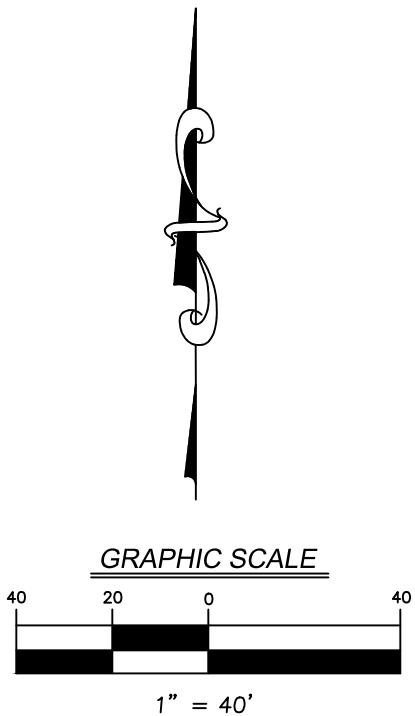
- NOTES:**
- ALL DIMENSIONS SHOWN ARE TO BACK OF CURB UNLESS OTHERWISE NOTED.
 - ALL PROPOSED ON-SITE STRIPING SHALL BE PAINTED WHITE UNLESS OTHERWISE NOTED.
 - BUILDING DIMENSIONS ARE TO OUTSIDE FACE OF BUILDING UNLESS OTHERWISE NOTED.
 - ALL CURB AND GUTTER SHALL BE B6.12 UNLESS OTHERWISE NOTED.

LEGEND

EXISTING	PROPOSED	DESCRIPTION
---	---	RIGHT-OF-WAY LINE
---	---	PROPERTY LINE (EXTERIOR)
---	---	LOT LINE (INTERIOR)
---	---	EASEMENT LINE
---	---	FENCE LINE
---	---	CENTERLINE
---	---	B-6.12 CURB & GUTTER
---	---	DEPRESSED CURB & GUTTER
---	---	REVERSED PITCH B-6.12 CONCRETE CURB AND GUTTER

SITE DATA

LOT	LOT AREA	BUILT AREA	FAR
LOT 1	14,050 SF	7,500 SF	0.53
LOT 2	13,954 SF	7,500 SF	0.54
LOT 3	134,866 SF	320,765 SF	2.40
LOT 4	88,612 SF	0 SF	0
LOT 5	186,284 SF	0 SF	0
OVERALL PUD	417,766 SF	335,765 SF	0.80



APPROVAL STAMPS:

No.	Date	Description
2	7/12/24	PZC PLAN RESUBMITTAL
1	6/7/24	PZC PLAN RESUBMITTAL

SUBMISSIONS & REVISIONS

OWNER

HINES
444 W LAKE ST, SUITE 2400
CHICAGO, IL 60606
PHONE: 312.419.4900
HINES.COM

ARCHITECT

ANTUNOVICH ASSOCIATES
ARCHITECTURE • PLANNING • INTERIOR DESIGN
224 WEST HURON STREET, SUITE 7E
CHICAGO, ILLINOIS 60654
MAIN: 312.266.1126
FAX: 312.266.7123
ANTUNOVICH.COM

STRUCTURAL ENGINEER

M.E.P. & F.P. ENGINEERS

CIVIL ENGINEER

V3 COMPANIES
444 N WELLS ST, SUITE 602
CHICAGO, IL 60654
PHONE: 630.724.9200
V3CO.COM

LANDSCAPE ARCHITECT

CONFLUENCE
307 N MICHIGAN AVE, SUITE 601
CHICAGO, IL 60601
PHONE: 302.663.5498
FAX: 515.288.8359
THINKCONFLUENCE.COM

GENERAL CONTRACTOR

PROJECT LOCATION

1200 E DIEHL RD
1200 E Diehl Rd Naperville, IL 60563

DRAWING TITLE

PRELIMINARY LAYOUT PLAN

SEAL

DATE:
02/26/24

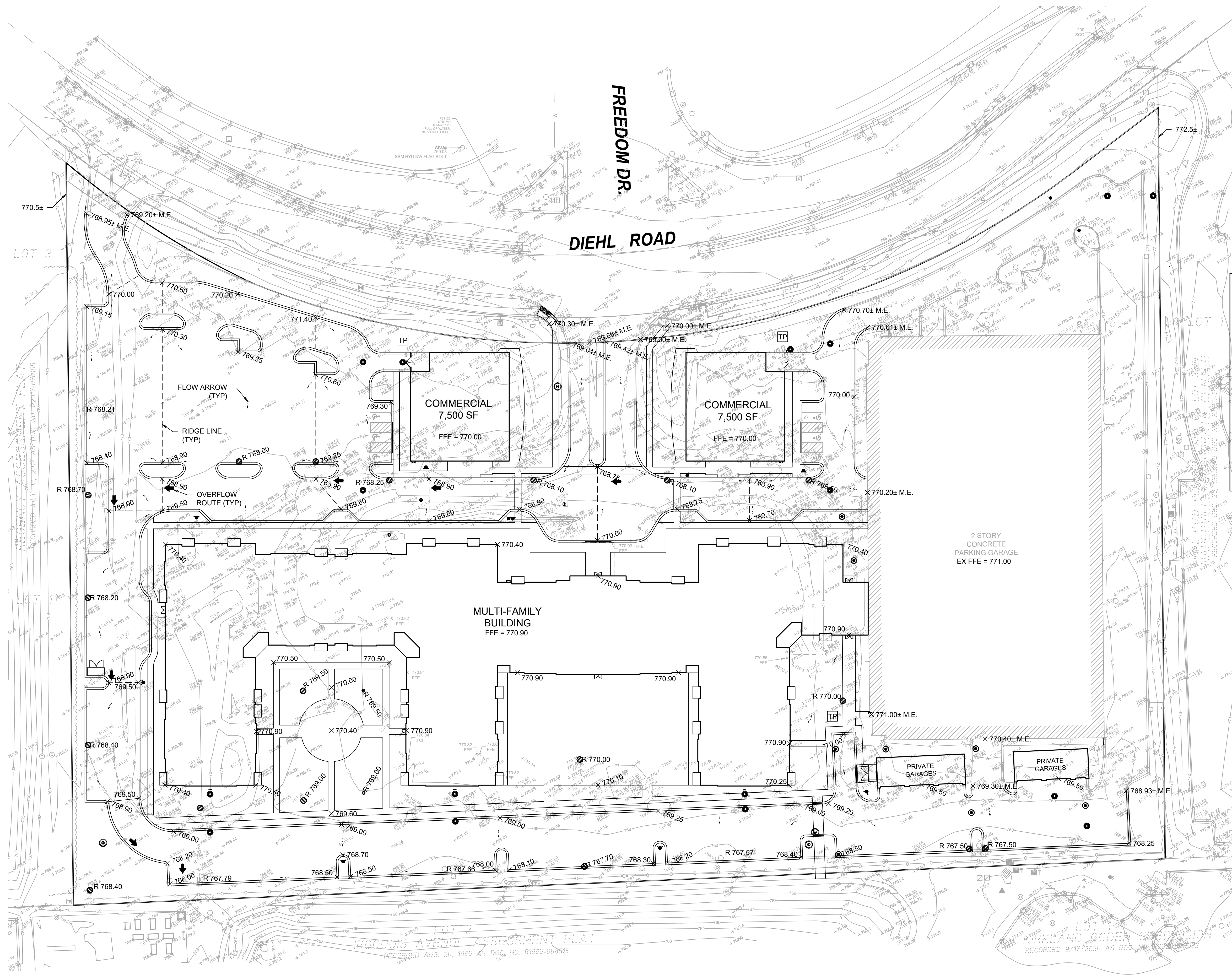
DRAWN BY:
DB

CHECKED BY:
RS

PROJECT NO:
240048

DRAWING NO:
C2.0

APPROVAL STAMP: _____



- NOTES:**
1. ALL PAVEMENT SPOT GRADE ELEVATIONS AND RIM ELEVATIONS WITHIN OR ALONG CURB AND GUTTER REFER TO EDGE OF PAVEMENT ELEVATIONS UNLESS OTHERWISE NOTED.
 2. ALL ELEVATIONS SHOWN DEPICT FINISHED GRADE UNLESS OTHERWISE NOTED. SUBTRACT TOPSOIL THICKNESS OR PAVEMENT SECTION TO ESTABLISH SUBGRADE ELEVATIONS.
 3. PROVIDE 1.50% CROSS SLOPE AND 4.00% MAXIMUM LONGITUDINAL SLOPE ON ALL SIDEWALKS AND PEDESTRIAN PATHS UNLESS OTHERWISE INDICATED. PLEASE NOTE THAT THE ILLINOIS ACCESSIBILITY CODE REQUIRES A MAXIMUM CONSTRUCTED CROSS SLOPE OF 2.00% AND LONGITUDINAL SLOPE OF 5.00%.
 4. NAPERVILLE DATUM CALCULATED TO BE 771.5
 $(772.5+770.5)/2 = 771.5$

LEGEND

EXISTING	PROPOSED	DESCRIPTION
		UTILITY STRUCTURE WITH CLOSED LID
		CURB INLET
		DRAINAGE STRUCTURE WITH OPEN LID
		FIRE HYDRANT
		VALVE IN VALVE BOX
		GATE VALVE IN VALVE VAULT
		FLARED END SECTION (F.E.S.)
		CONTOUR
		SPOT ELEVATION
		STORMWATER FLOW DIRECTION
		STORMWATER OVERFLOW ROUTE

APPROVAL STAMPS:

No.	Date	Description
2	7/12/24	PZC PLAN RESUBMITTAL
1	6/7/24	PZC PLAN RESUBMITTAL

SUBMISSIONS & REVISIONS

OWNER
HINES
 444 W LAKE ST, SUITE 2400
 CHICAGO, IL 60606
 PHONE: 312.419.4900
 HINES.COM

ARCHITECT
ANTUNOVICH ASSOCIATES
 ARCHITECTURE - PLANNING - INTERIOR DESIGN
 224 WEST HURON STREET, SUITE 7E
 CHICAGO, ILLINOIS 60654
 MAIN: 312.266.1126
 FAX: 312.266.7123
 ANTUNOVICH.COM

STRUCTURAL ENGINEER

M.E.P. & F.P. ENGINEERS

CIVIL ENGINEER
V3 COMPANIES
 444 N WELLS ST, SUITE 602
 CHICAGO, IL 60654
 PHONE: 630.724.9200
 V3CO.COM

LANDSCAPE ARCHITECT
CONFLUENCE
 307 N MICHIGAN AVE, SUITE 601
 CHICAGO, IL 60601
 PHONE: 302.663.5498
 FAX: 315.288.8359
 THINKCONFLUENCE.COM

GENERAL CONTRACTOR

PROJECT LOCATION

1200 E DIEHL RD
 1200 E Diehl Rd Naperville, IL 60563

DRAWING TITLE
PRELIMINARY GRADING PLAN

SEAL	DATE: 02/26/24
	DRAWN BY: DB
	CHECKED BY: RS
	PROJECT NO: 240048

DRAWING NO:
C3.0

