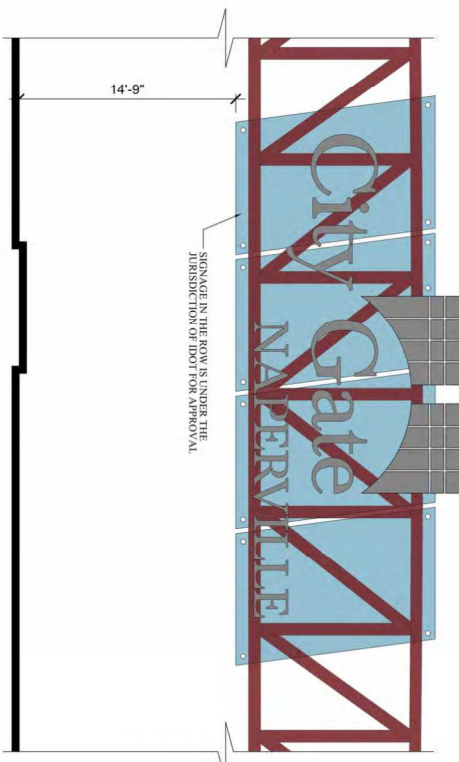
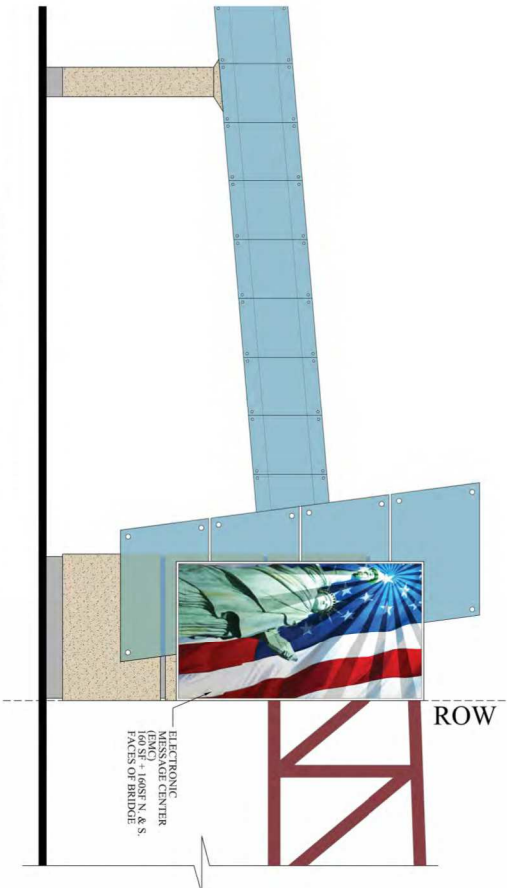


1 PEDESTRIAN BRIDGE ELEVATION  
SCALE: 1" = 10'



ENLARGED ELEVATION  
2 CITYGATE NAPERVILLE SIGNAGE AT PEDESTRIAN BRIDGE  
SCALE: 1/4" = 1'-0"



ENLARGED ELEVATION  
1A CITYGATE WEST E.M.C. AT PEDESTRIAN BRIDGE  
SCALE: 1/4" = 1'-0"

ENLARGED ELEVATION  
1B (SIMILAR)  
CITYGATE EAST E.M.C. AT PEDESTRIAN BRIDGE  
SCALE: 1/4" = 1'-0"

Comments to be provided via email to Erin Vernard.

**SIGNAGE PROGRAM**

NO.	DATE:	REVISIONS:

**CITYGATE NAPERVILLE**  
S.W. CORNER OF U.S. RTE. 59 & FERRY ROAD  
NAPERVILLE, ILLINOIS

**TECH METRA LTD**  
ARCHITECTURE  ENGINEERING  CONSTRUCTION MANAGEMENT  INTERIOR DESIGN

JOB:   
DATE: 06-04-17  
SCALE: AS NOTED  
SHEET: **A-1**

### SIGN AREAS

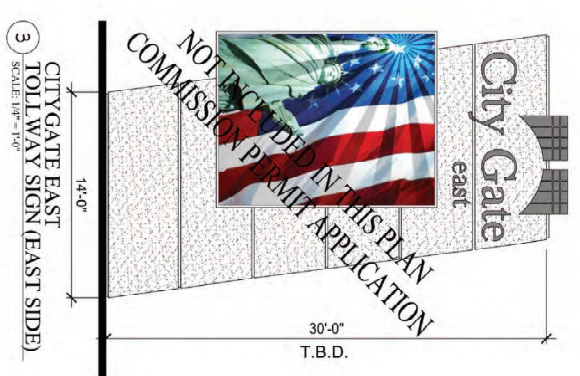
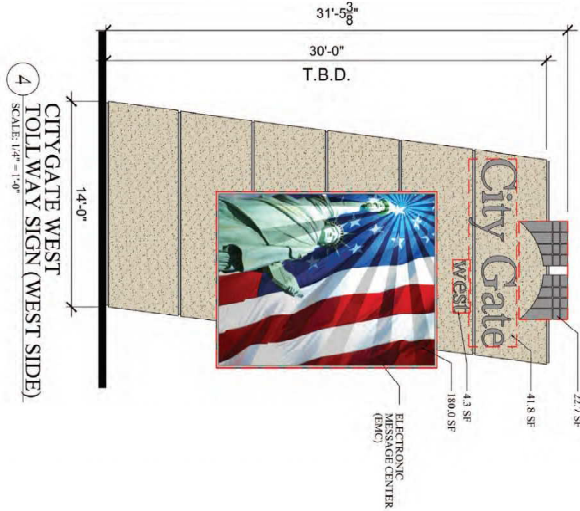
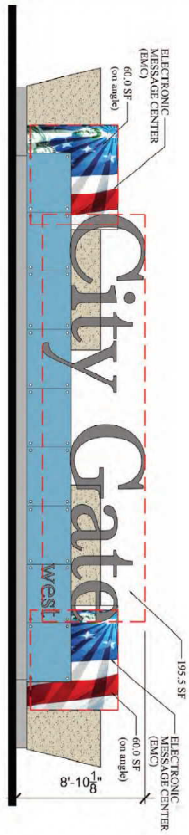
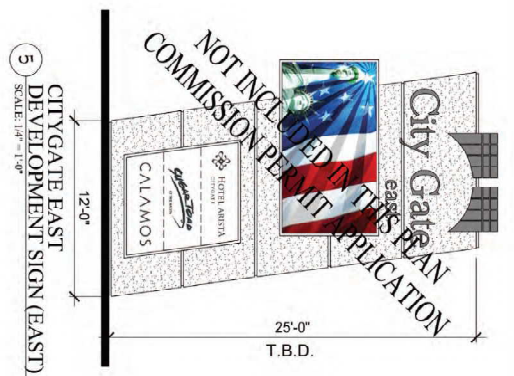
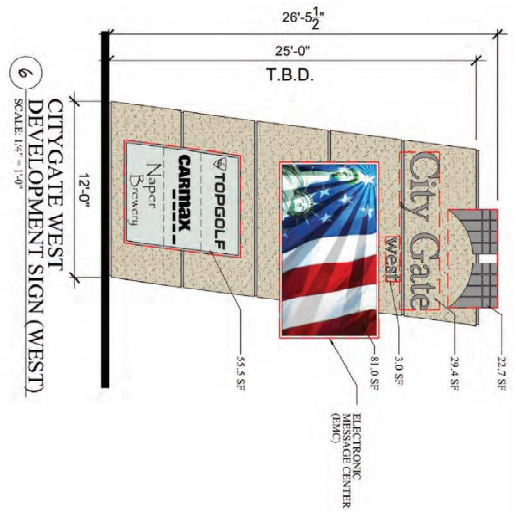
(4) TOLLWAY SIGN - WEST SIDE	
22.7	SF
41.8	SF
4.3	SF
180.0	SF
<b>TOTAL</b>	<b>248.8 SF</b>

(6) DEVELOPMENT SIGN - WEST	
22.7	SF
29.4	SF
3.0	SF
81.0	SF
<b>TOTAL</b>	<b>136.1 SF</b>

(8) MONUMENT SIGN - RTE. 59 & FERRY RD	
195.5	SF
60.0	SF
60.0	SF
<b>TOTAL</b>	<b>315.5 SF</b>



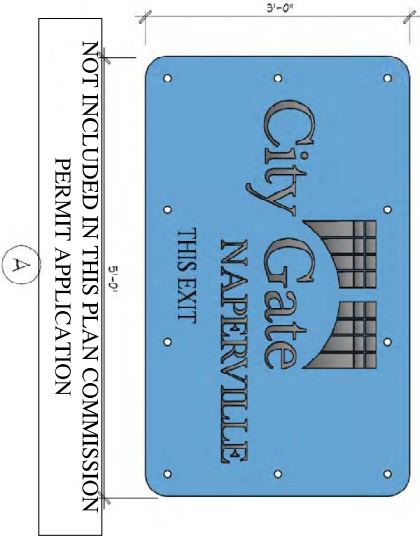
DEVELOPMENT IDENTITY / SIGNAGE PROGRAM

**TECH METRA LTD**  
ARCHITECTURE  ENGINEERING  CONSTRUCTION MANAGEMENT  INTERIOR DESIGN  
2221 GARDEN COURT • GARDEN BROOK, IL 60523 • (630)560-8100 • FAX (630)560-8101

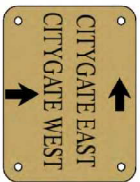
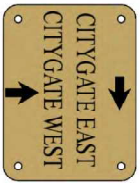
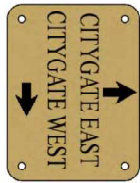
DATE: 06-28-17  
SCALE: AS NOTED  
SHEET: A-2

**CITYGATE NAPERVILLE**  
S.W. CORNER OF U.S. RTE. 59 & FERRY ROAD  
NAPERVILLE, ILLINOIS

NO.	DATE:	REVISIONS:



IDOT  
MAINLINE SIGN  
SCALE: 1/2" = 1'-0"



IDOT RAMP/  
TRAILBLAZER SIGN  
SCALE: 1/2" = 1'-0"

**DEVELOPMENT IDENTITY / SIGNAGE PROGRAM**

NO.	DATE:	REVISIONS:

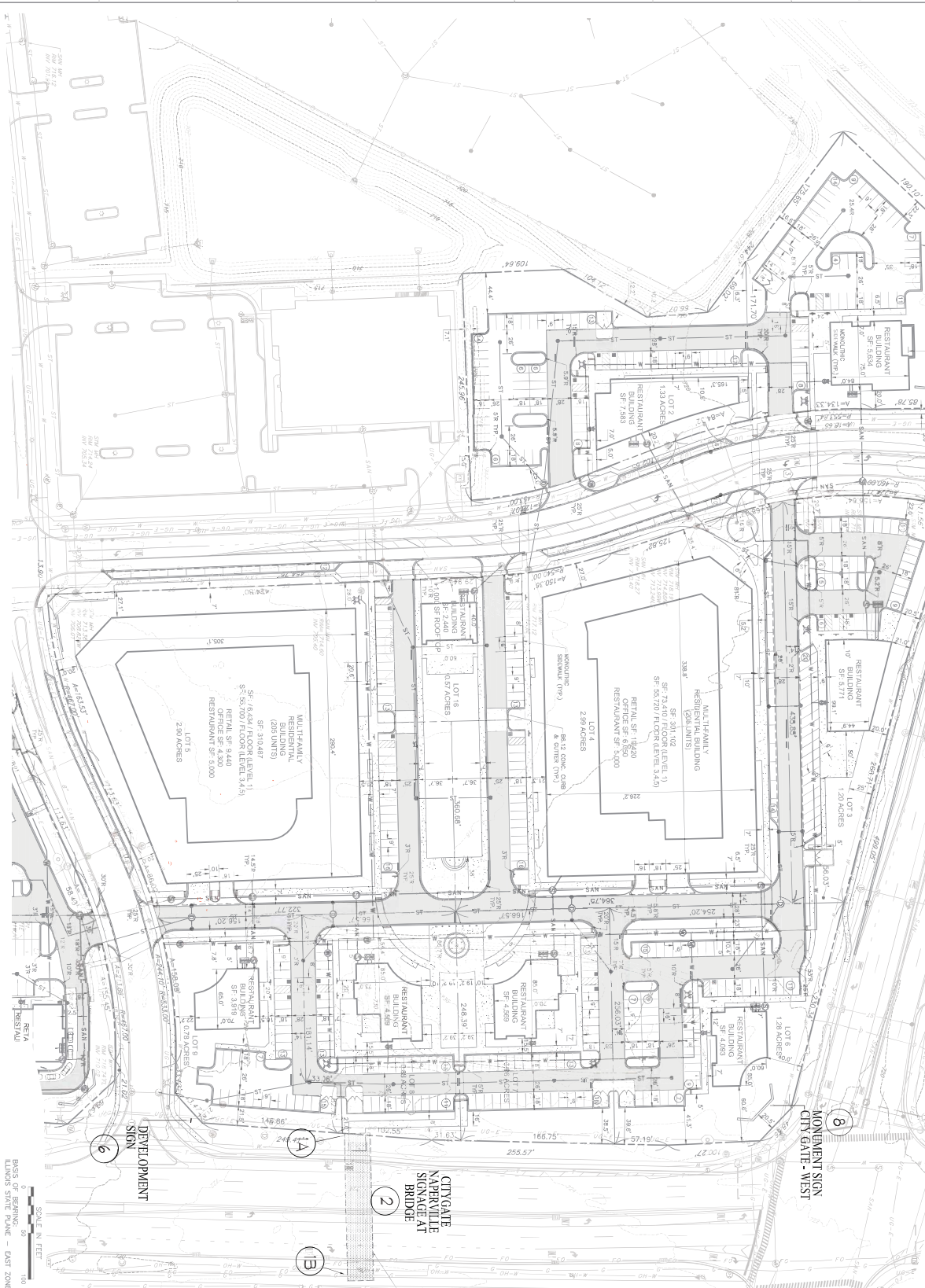
**CITYGATE NAPERVILLE**  
S.W. CORNER OF U.S. RTE. 59 & FERRY ROAD  
NAPERVILLE, ILLINOIS

**TECH METRA LTD**  
 ARCHITECTURE  ENGINEERING  CONSTRUCTION MANAGEMENT  INTERIOR DESIGN  
 2221 CAMDEN COURT CDJAK BROOK, IL 60023  (630)560-8100  FAX (630)560-8101

JOB: \_\_\_\_\_  
 DATE: 10/24/17  
 SCALE: AS NOTED  
 SHEET: **A-3**



BASE OF BEARING:  
ILLINOIS STATE PLANE - EAST ZONE



NO.	DATE	DESCRIPTION
1	02/05/2020	CONSTRUCTION
2	02/05/2020	CONSTRUCTION
3	02/05/2020	CONSTRUCTION
4	02/05/2020	CONSTRUCTION
5	02/05/2020	CONSTRUCTION
6	02/05/2020	CONSTRUCTION
7	02/05/2020	CONSTRUCTION
8	02/05/2020	CONSTRUCTION

**LEGEND:**  
 PROPOSED HEAVY DUTY BUILDINGS/SIGNAGE  
 PROPOSED CONCRETE SIGNWALL, PANEL, OR SIGN

- 1A CITYGATE WEST - E.M.C. AT PEDESTRIAN BRIDGE
- 1B CITYGATE EAST - E.M.C. AT PEDESTRIAN BRIDGE
- 2 CITYGATE NAPERVILLE SIGNAGE AT PEDESTRIAN BRIDGE
- 3 CITYGATE EAST - TOLLWAY SIGN
- 4 CITYGATE WEST - TOLLWAY SIGN
- 5 CITYGATE EAST - DEVELOPMENT SIGN
- 6 CITYGATE WEST - DEVELOPMENT SIGN
- 7 CITYGATE EAST - MONUMENT SIGN
- 8 CITYGATE WEST - MONUMENT SIGN
- A CITYGATE NAPERVILLE DOT RAMP / TRAILBLAZER SIGN
- B CITYGATE NAPERVILLE DOT RAMP / TRAILBLAZER SIGN
- C CITYGATE NAPERVILLE DOT RAMP / TRAILBLAZER SIGN
- D CITYGATE NAPERVILLE DOT RAMP / TRAILBLAZER SIGN
- E CITYGATE NAPERVILLE DOT RAMP / TRAILBLAZER SIGN
- F CITYGATE NAPERVILLE DOT RAMP / TRAILBLAZER SIGN

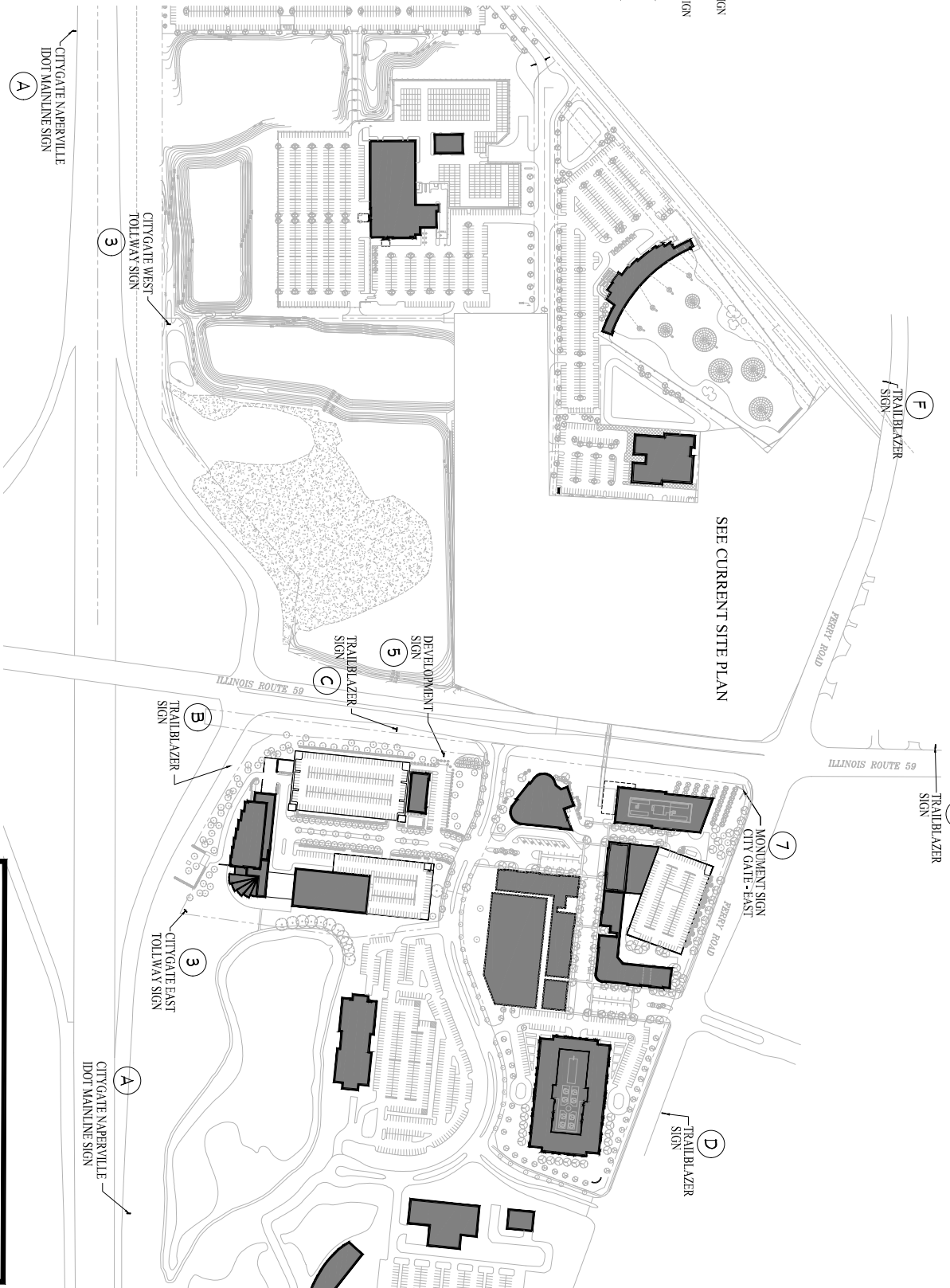
**Civil & Environmental Consultants, Inc.**  
 1500 East Oak Road, Suite 200 - Naperville, IL 60563  
 PH: 630.330.0000 FAX: 630.330.0077  
 WWW.CIVILANDENVIRONMENTALCONSULTANTS.COM

**INTER-CONTINENTAL EQUITIES, LLC**  
 2221 CAMDEN COURT, SUITE 200  
 OAK BROOK, ILLINOIS  
 TEL: (630) 560-8018

**CITYGATE WEST**  
 PRELIMINARY ENGINEERING

**CV101**

- 1 CITYGATE WEST - EMC AT PEDESTRIAN BRIDGE
- 2 CITYGATE NAPERVILLE SIGNAGE AT PEDESTRIAN BRIDGE
- 3 CITYGATE EAST - TOLLWAY SIGN
- 4 CITYGATE WEST - TOLLWAY SIGN
- 5 CITYGATE EAST - DEVELOPMENT SIGN
- 6 CITYGATE WEST - DEVELOPMENT SIGN
- 7 CITYGATE EAST - MONUMENT SIGN
- 8 CITYGATE EAST - MONUMENT SIGN
- A CITYGATE NAPERVILLE DOT MAINLINE SIGN
- B CITYGATE NAPERVILLE DOT RAMP / TRAILBLAZER SIGN
- C CITYGATE NAPERVILLE DOT RAMP / TRAILBLAZER SIGN
- D CITYGATE NAPERVILLE DOT RAMP / TRAILBLAZER SIGN
- E CITYGATE NAPERVILLE DOT RAMP / TRAILBLAZER SIGN
- F CITYGATE NAPERVILLE DOT RAMP / TRAILBLAZER SIGN



ENLARGED SITE PLAN  
SCALE N.T.S.

DEVELOPMENT IDENTITY / SIGNAGE PROGRAM

NO.	DATE:	REVISIONS:

**TECH METRA LTD**  
 ARCHITECTURE  ENGINEERING  CONSTRUCTION MANAGEMENT  INTERIOR DESIGN  
 2221 CAMDEN COURT | CHICAGO, ILL. 60623 | (630) 560-8100 | FAX (630) 560-8101

**CITYGATE NAPERVILLE**  
 S.W. CORNER OF U.S. RTE. 59 & FERRY ROAD  
 NAPERVILLE, ILLINOIS

JOB: \_\_\_\_\_  
 DATE: 10-03-17  
 SCALE: N.T.S.  
 SHEET: **SP-2**



Upper Roof +66'-0"  
 L6 / Lower Roof +55'-0"  
 L5 +44'-0"  
 L4 +33'-0"  
 L3 +22'-0"  
 L2 +11'-0"  
 L1 +0'-0"

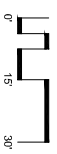
South Residential Building - North Elevation

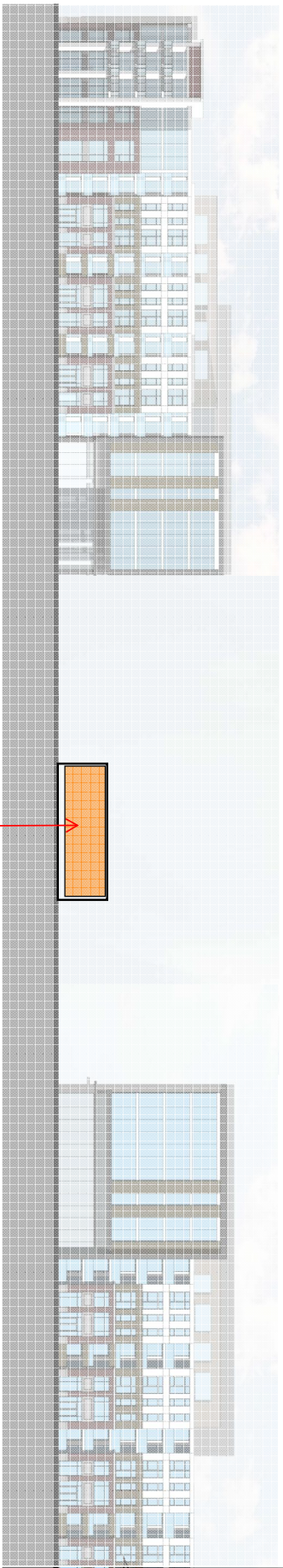


Upper Roof +66'-0"  
 L6 / Lower Roof +55'-0"  
 L5 +44'-0"  
 L4 +33'-0"  
 L3 +22'-0"  
 L2 +11'-0"  
 L1 +0'-0"

LED panel area = 800 sf

North Residential Building - South Elevation





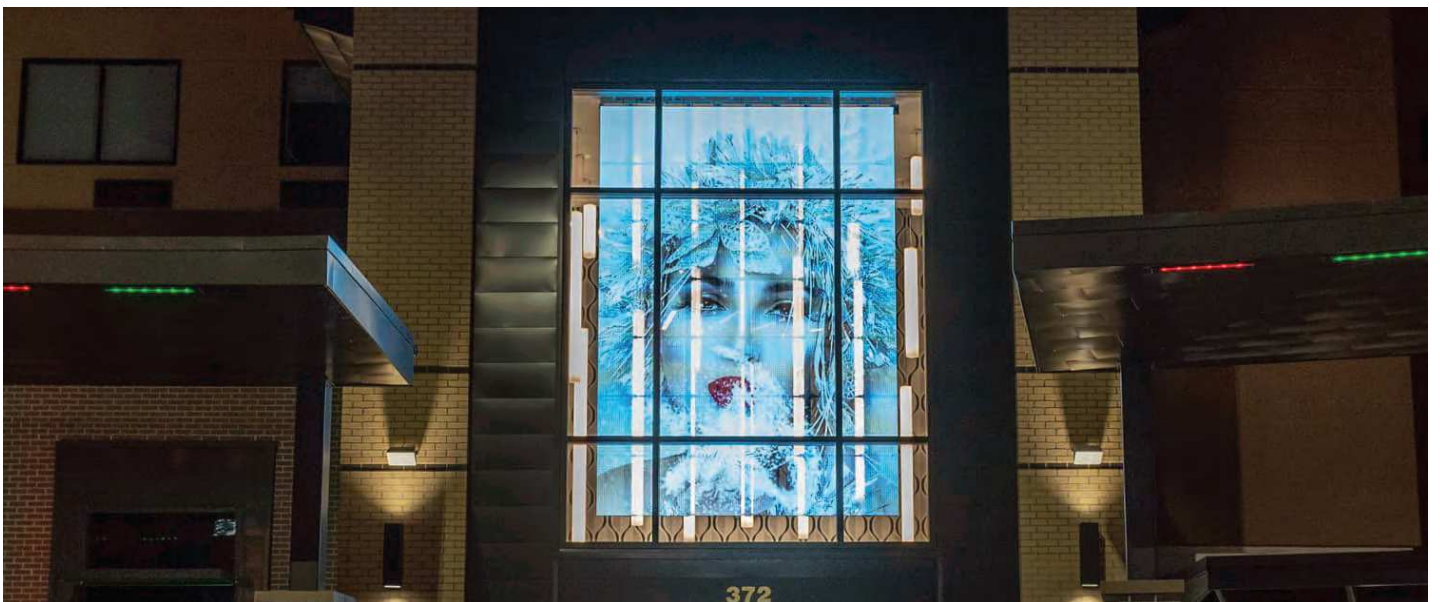
LED Panel Area = 1,200sf

Overall West Elevation

- Upper Roof
- +66'-0"
- LG/Lower Level
- +30'-0"
- +33'-0"
- L4
- +44'-0"
- +33'-0"
- L3
- +22'-0"
- L2
- +11'-0"
- L1
- +0'-0"









# FLEXStorm



OUTDOOR  
IP65



HIGH  
BRIGHTNESS



HIGH  
REFRESH



FANLESS



FRONT  
SERVICEABLE



CUSTOM  
SIZES



FIXED  
INSTALL

# PixelFLEX™



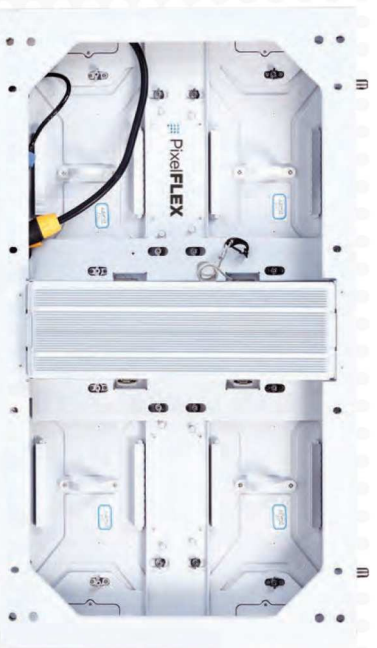
# FLEXStorm

## ADVANTAGE



### CONSTRUCTED TO ENDURE & LOOK BRILLIANT DOING IT

**FLEXStorm** is designed and built to withstand adverse weather conditions and provide a truly breathtaking outdoor LED display option you can depend on. **FLEXStorm** can be used as outdoor advertising, entertainment, and much more. Update your display from anywhere with the click of a button using cloud-based content management.



pixelflexled.com



#### Improved Pitch Offerings

FLEXStorm is one of the highest resolution outdoor product on the market. Pitches available include 3.9, 4.8, 6, 8, 10 and 16mm in both SMD and DIP LED configurations.



#### 16:9 Ratio Tile Design

FLEXStorm is the **FIRST** of its kind designed to meet the demands of outdoor video screen design. Available in several sizes, the 16:9 ratio cabinet configuration helps achieve the right screen dimensions for your specific LED screen build.



#### INDUSTRY LEADING BRIGHTNESS

The key to a quality outdoor LED display is variable brightness for any condition day or night. FLEXStorm has brightness offerings between 6000-10000 Nits.

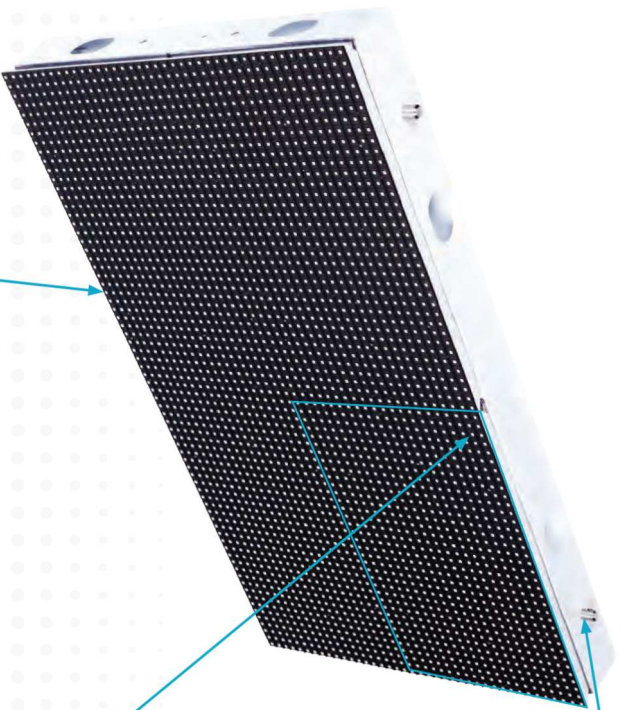


#### IP-65 WEATHER RATING

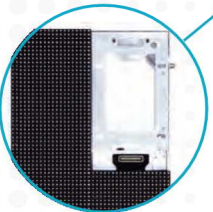
A fully rated outdoor product is key to guaranteeing the longevity of your Outdoor LED display screen.

Pixel**FLEX**™

# FEATURES



Cabinets have alignment pins and easy bolt through interlocking guaranteeing safe and proper alignment.



Full front serviceability allows for proper and easy service of outdoor screens.



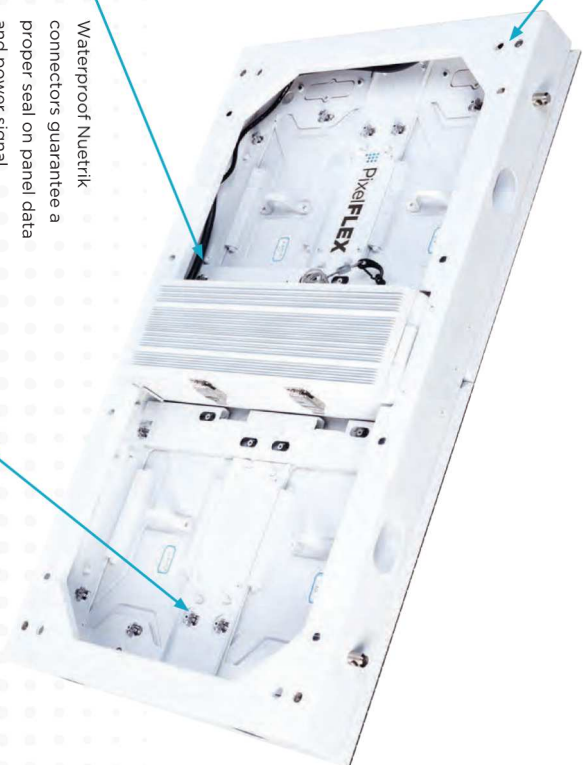
Modules are easily removed with an allen key for access to components.



Mounting holes are placed for easy attachment to structure or surface.



Waterproof Nuetrik connectors guarantee a proper seal on panel data and power signal.



FLEXStorm's design allows for rear serviceability giving you the choice of installation type.

# ACCESSIBILITY

## FULL FRONT SERVICEABILITY

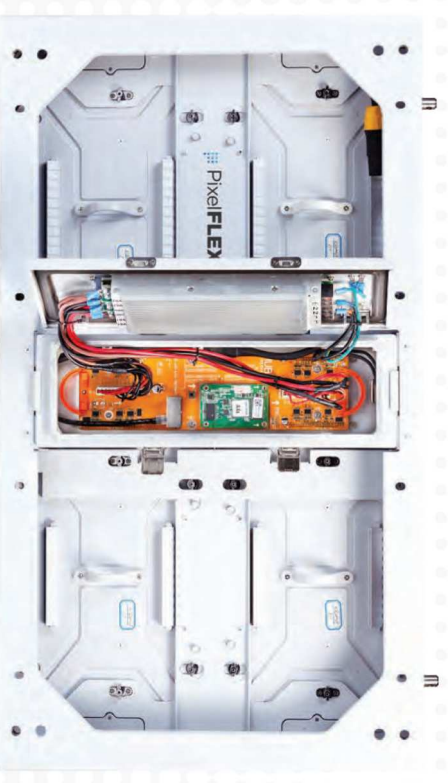
Each cabinet's electronics and data control is easily accessible with T-handle that remove individual modules to access power and data boxes on board the LED displays frame.



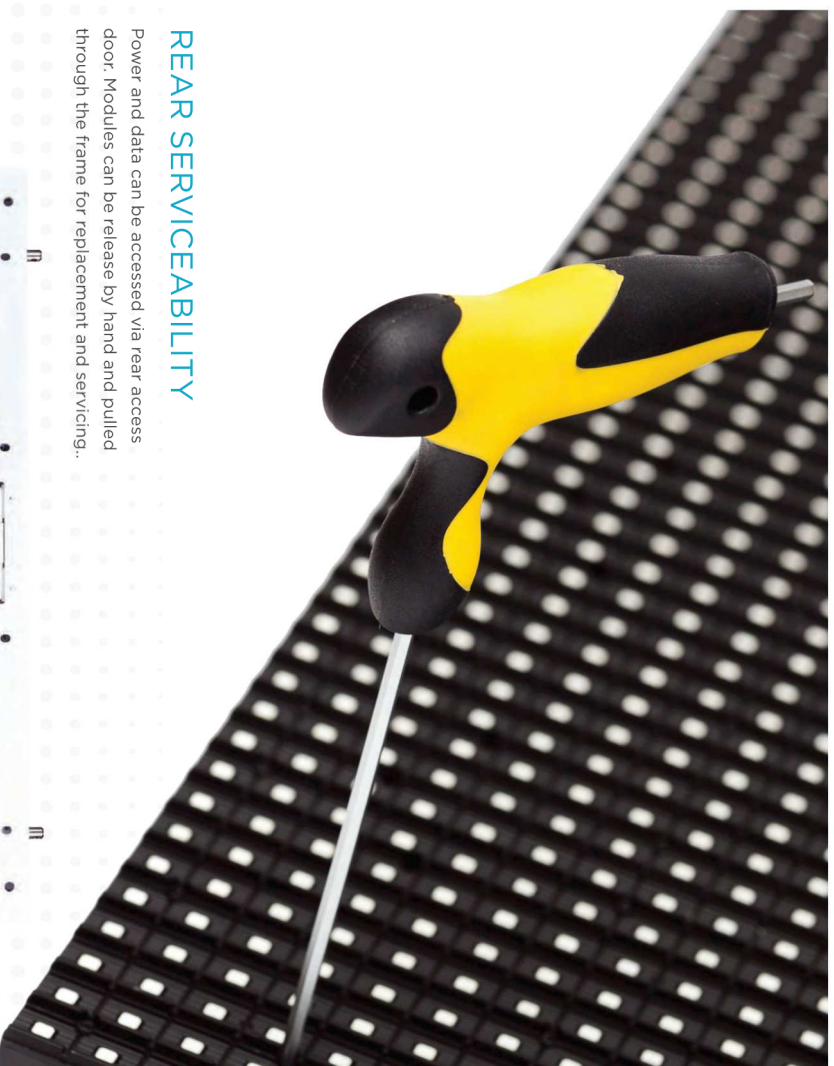
[pixelflexled.com](http://pixelflexled.com)

## REAR SERVICEABILITY

Power and data can be accessed via rear access door. Modules can be release by hand and pulled through the frame for replacement and servicing..



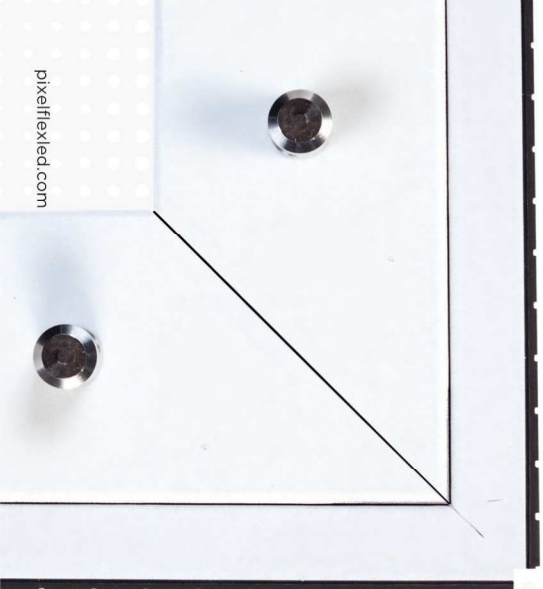
**PixelFLEX™**





## CREATIVE OPTIONS

Creative designs are no longer bound for indoor use. FLEXStorm can create right angles as well as curve up to 45 degrees to meet your creative display needs outdoors.



pixelflexed.com



## STABLE, RELIABLE CONNECTIONS

FLEXStorm utilizes data and power connections that are 100% water tight allowing for stable and reliable connections between each outdoor LED display cabinet.



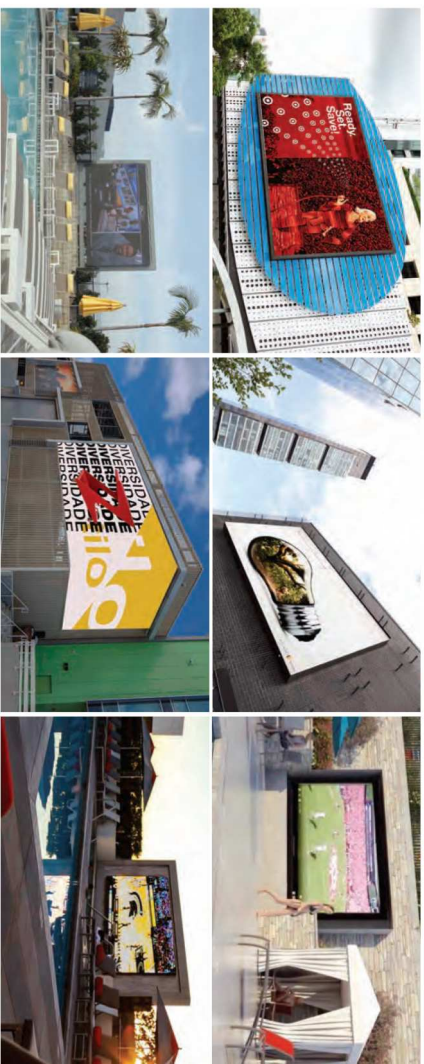
Pixel**FLEX**<sup>™</sup>



## AUTO BRIGHTNESS ADJUSTMENT

Utilizing an intelligent auto correcting light sensor control system, your outdoor LED screen installation will be the perfect brightness at all hours of the day to maximize the eyes on your screen.

## APPLICATION



### FLEXstorm Specifications

Parameter	Outdoor					
Model	F52-3.9	F52-4.8	F52-6.67	F52-8.33	F52-10.667-Ind	F52-16.67-IP
Pixel Pitch	3.9mm	4.81mm	6.67mm	8.33mm	10mm	16.67mm
Pixel Density (P/M)	43,200	43,200	27,680	15,582	8,640	3,744
Panel Size	769.8 x 433mm, 769.8 x 649.5mm, 1154.7 x 433mm, 769.8 x 866mm, 1339.6 x 433mm, 1154.7 x 649.5mm, 1154.7 x 866mm, 1339.6 x 649.5mm, 1339.6 x 866mm					
Panel Depth	105mm					
Module Size	384.9 x 216.5mm (Modules per cabinet size - 4, 6, 8, 9, 12, 16)					
Module Resolution	80 x 45					
Panel Weight	64 x 35					
Serviceability	320g/66L lbs PSH					
Viewability	Full Front / Rear					
Brightness	6000-7500 NI		6000-10000 NI		7500-10000 NI	
Refresh Rate	2-3840Hz		2-3840Hz		7500-10000 NI	
Viewing Angle (H/V)	60° / 90°		60° / 90°		7500-10000 NI	
Operating Temperature	-22°F - 122°F / -30°C - 50°C					
Power Connection	Neutral					
Working Power (Avg/Max)	280 W/m <sup>2</sup> / 800 W/m <sup>2</sup>		280 W/m <sup>2</sup> / 800 W/m <sup>2</sup>		280 W/m <sup>2</sup> / 800 W/m <sup>2</sup>	
Curve Angle Capabilities	45 Degree Right Angle					
Input Power	AC 110/240V, 50-60Hz					
Processing	Neutral					
Data Connection	Cat. 5/6					
Lifetime Hours	100,000 Hours					
Weather Rating	IP65					
Certifications	FCC ETL, CE, EMC, CCC					

All specifications are property of PixelFlex LLC and are subject to change without notice. Please verify specifications and information before final sale. FLEXstorm cabinet sizes above are listed as maximum sizes and can be made in other size options. Speak with a sales representative about your specific needs.