



Design #

0423994Ar1

Sheet 1 of 10

Client

SEVEN BREW COFFEE

Address

1200 E Ogden Ave.  
Naperville, IL 60563

Account Rep. WF

Designer RMS

Date 1/12/24

Approval / Date

Client	
Sales	
Estimating	
Art	
Engineering	
Landlord	

Revision / Date

R1-AC-1/17/24: rev F

**SEVEN BREW DRIVE THRU COFFEE**  
**1200 East Ogden Ave.**  
**Naperville, IL**  
**WO# 0423994a**



14201 Sovereign Road #101  
 Fort Worth, TX 76155  
 (214) 902-2000 Fax (214) 902-2044



chandlersigns.com

**National Headquarters** 14201 Sovereign Road #101  
 Fort Worth, TX 76155  
 (214) 902-2000 Fax (214) 902-2044

**San Antonio** 17319 San Pedro Avenue  
 Suite 200  
 San Antonio, TX 78232  
 (210) 349-3804 Fax (210) 349-8724

**Northeast US** 2301 River Road, Suite 201  
 Louisville, KY 40206  
 (502) 897-9800 Cell (502) 554-2575

**Georgia** 111 Woodstone Place  
 Dawsonville, GA 30534  
 (678) 725-8852 Fax (210) 349-8724

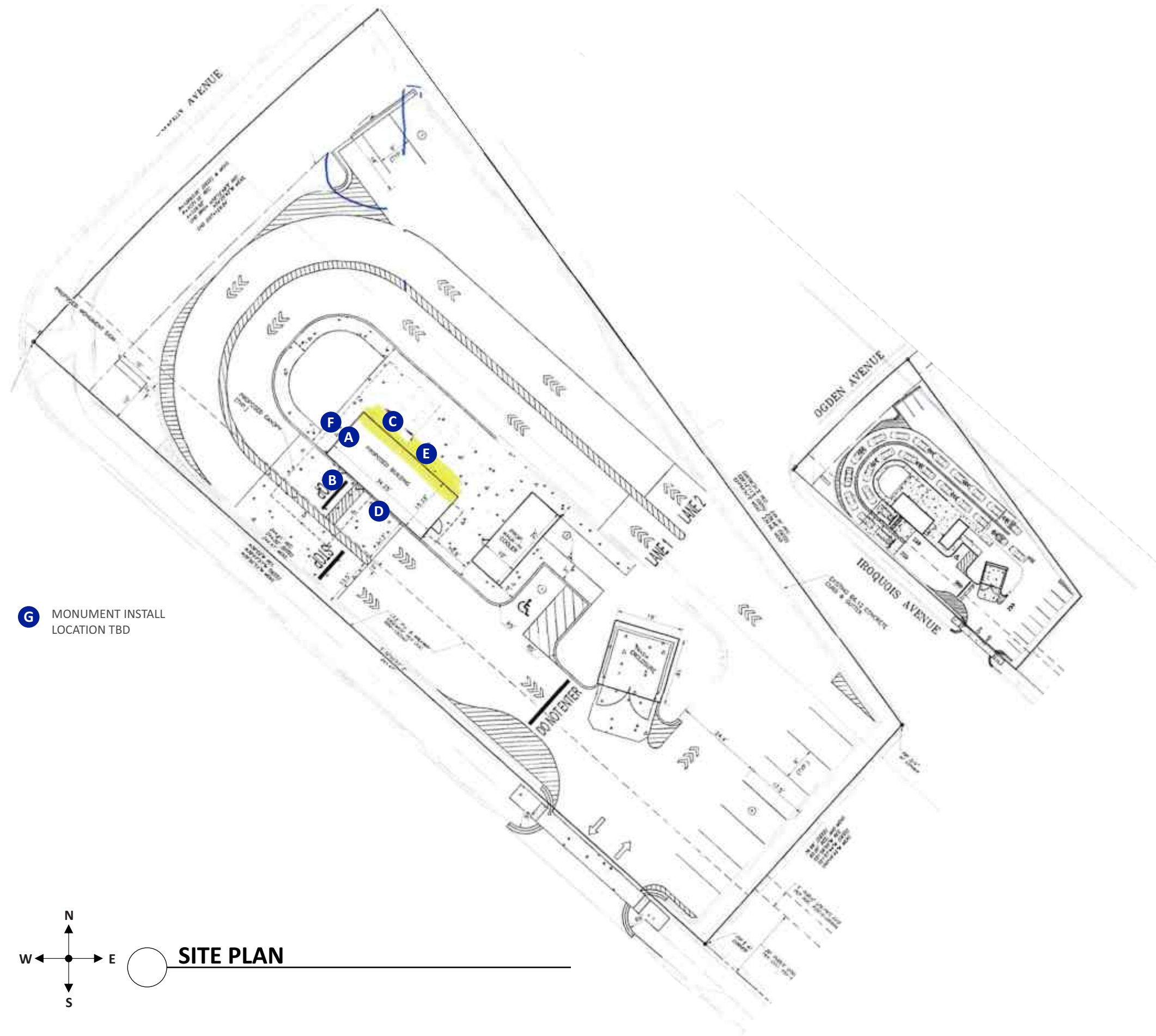
**South Texas** PO BOX 125 206 Daral Drive  
 Portland, TX 78374  
 (361) 563-5599 Fax (361) 643-6533

This drawing is the property of  
 Chandler Signs, LLC  
 All rights to its use for reproduction  
 are reserved by Chandler Signs, LLC

**FINAL ELECTRICAL  
 CONNECTION BY  
 CUSTOMER**

THIS SIGN IS INTENDED TO BE INSTALLED  
 IN ACCORDANCE WITH ARTICLE 600 OF THE  
 NATIONAL ELECTRICAL CODE AND/OR OTHER  
 APPLICABLE LOCAL CODES. THIS INCLUDES  
 PROPER GROUNDING & BONDING OF THE SIGN.  
 SIGN WILL BEAR UL LABEL(S).





**G** MONUMENT INSTALL LOCATION TBD



<b>Design #</b>	
0423994Ar1	
<b>Sheet</b> 2 of 10	
<b>Client</b>	
SEVEN BREW COFFEE	
<b>Address</b>	
1200 E Ogden Ave. Naperville, IL 60563	
<b>Account Rep.</b>	WF
<b>Designer</b>	RMS
<b>Date</b>	1/12/24
<b>Approval / Date</b>	
<b>Client</b>	
<b>Sales</b>	
<b>Estimating</b>	
<b>Art</b>	
<b>Engineering</b>	
<b>Landlord</b>	

<b>Revision / Date</b>	
R1-AC-1/17/24: rev F	

chandlersigns.com

<b>National Headquarters</b>	14201 Sovereign Road #101 Fort Worth, TX 76155 (214) 902-2000 Fax (214) 902-2044
<b>San Antonio</b>	17319 San Pedro Avenue Suite 200 San Antonio, TX 78232 (210) 349-3804 Fax (210) 349-8724
<b>Northeast US</b>	2301 River Road, Suite 201 Louisville, KY 40206 (502) 897-9800 Call (502) 554-2575
<b>Georgia</b>	111 Woodstone Place Dawsonville, GA 30534 (678) 725-8852 Fax (210) 349-8724
<b>South Texas</b>	PO BOX 125 206 Daral Drive Portland, TX 78374 (361) 563-5599 Fax (361) 643-6533

This drawing is the property of Chandler Signs, LLC. All rights to its use for reproduction are reserved by Chandler Signs, LLC.

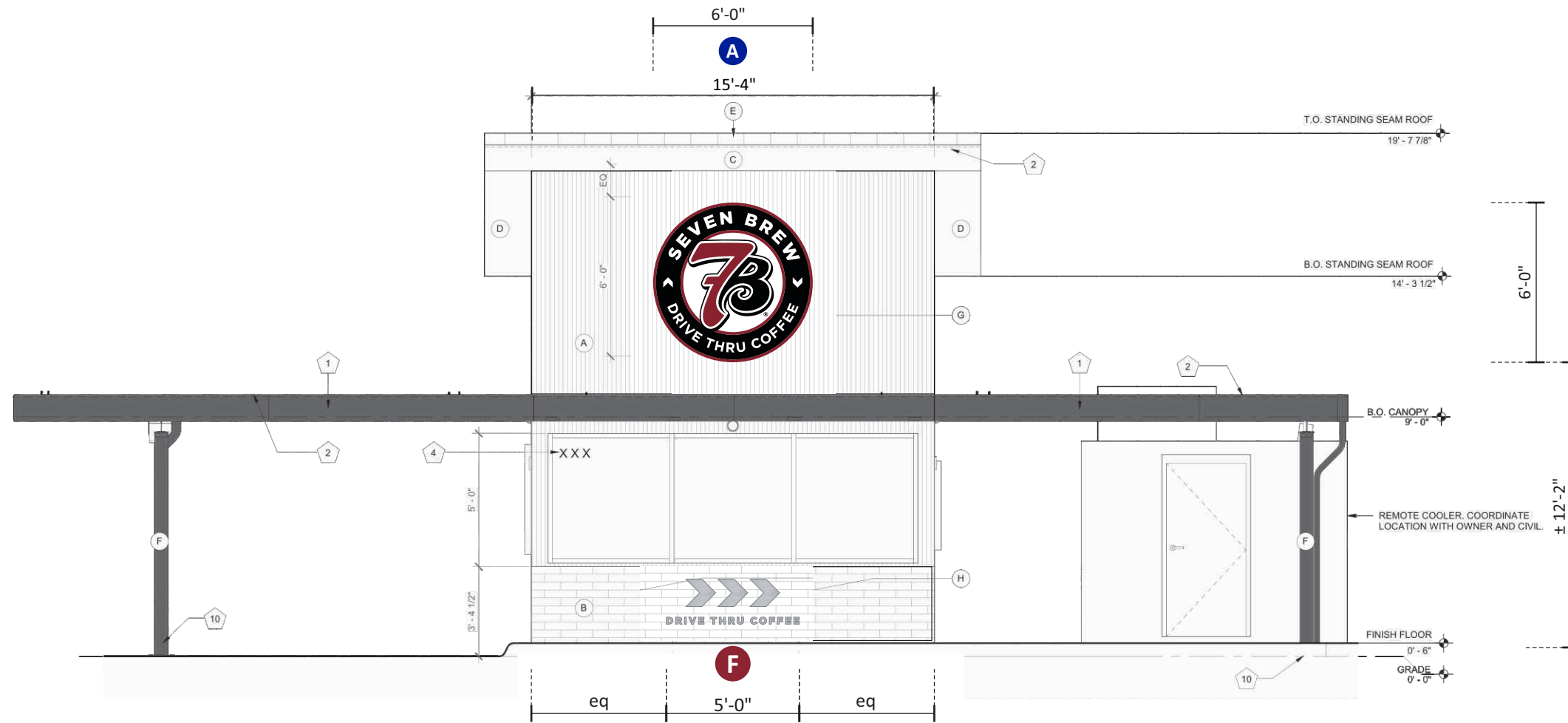
**FINAL ELECTRICAL CONNECTION BY CUSTOMER**

THIS SIGN IS INTENDED TO BE INSTALLED IN ACCORDANCE WITH ARTICLE 600 OF THE NATIONAL ELECTRICAL CODE AND/OR OTHER APPLICABLE LOCAL CODES. THIS INCLUDES PROPER GROUNDING & BONDING OF THE SIGN. SIGN WILL BEAR UL LABEL(S).



<b>Design #</b>	<b>0423994Ar1</b>
<b>Sheet</b>	<b>3 of 10</b>
<b>Client</b>	<b>SEVEN BREW COFFEE</b>
<b>Address</b>	1200 E Ogden Ave. Naperville, IL 60563
<b>Account Rep.</b>	WF
<b>Designer</b>	RMS
<b>Date</b>	1/12/24
<b>Approval / Date</b>	
<b>Client</b>	
<b>Sales</b>	
<b>Estimating</b>	
<b>Art</b>	
<b>Engineering</b>	
<b>Landlord</b>	

<b>Revision / Date</b>	
R1-AC-1/17/24: rev F	



○ FRONT ELEVATION - SCALE: 3/16" = 1' - 0"

**FRONT ELEVATION** SCALE: 3/16" = 1'-0"

**CHANDLER SIGNS**  
chandlersigns.com

<b>National Headquarters</b>	14201 Sovereign Road #101 Fort Worth, TX 76155 (214) 902-2000 Fax (214) 902-2044
<b>San Antonio</b>	17319 San Pedro Avenue Suite 200 San Antonio, TX 78232 (210) 349-3804 Fax (210) 349-8724
<b>Northeast US</b>	2301 River Road, Suite 201 Louisville, KY 40206 (502) 897-9800 Cell (502) 554-2575
<b>Georgia</b>	111 Woodstone Place Dawsonville, GA 30534 (678) 725-8852 Fax (210) 349-8724
<b>South Texas</b>	PO BOX 125 306 Daral Drive Portland, TX 78374 (361) 563-5599 Fax (361) 643-6533

This drawing is the property of Chandler Signs, LLC. All rights to its use for reproduction are reserved by Chandler Signs, LLC.

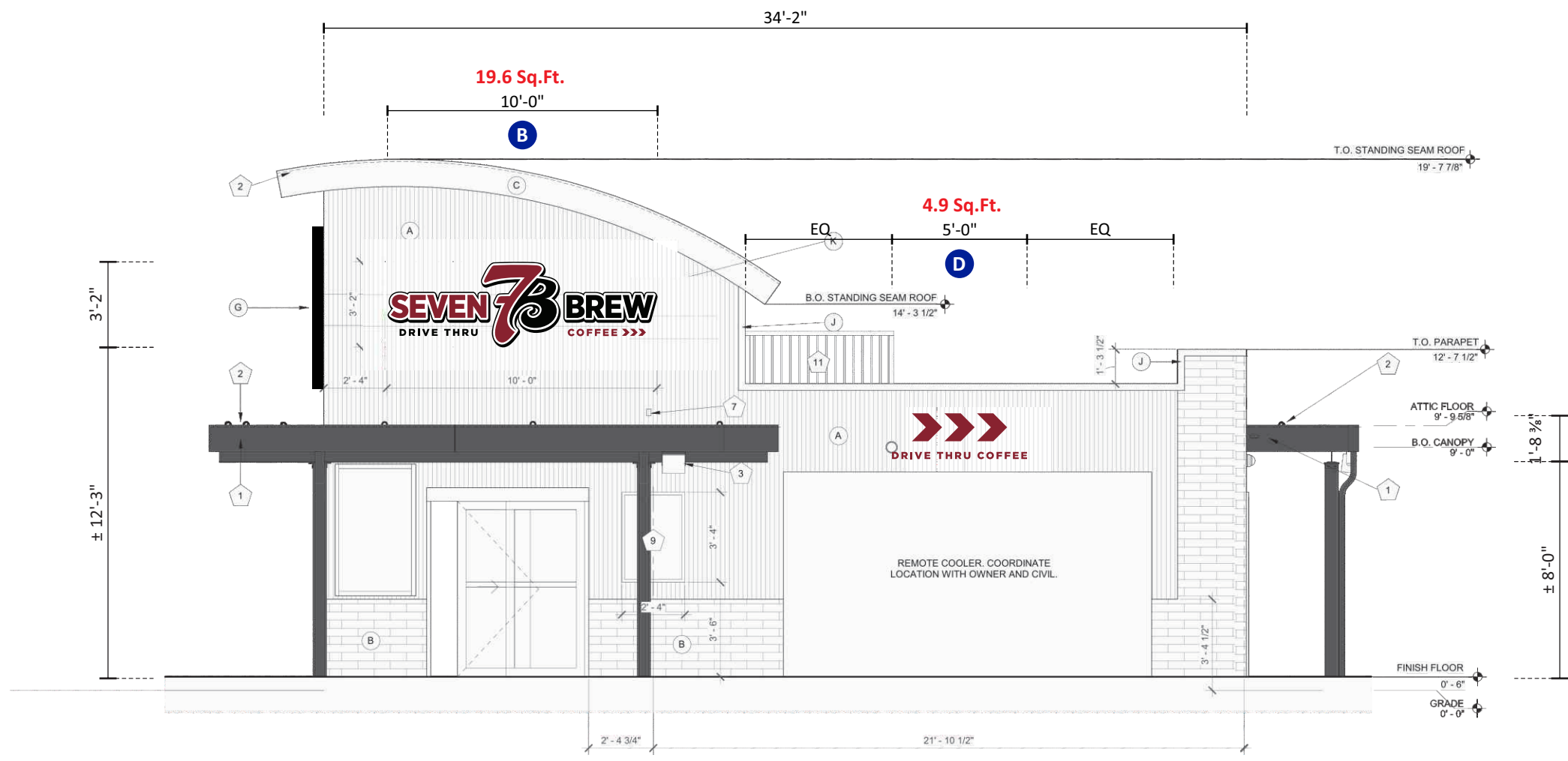
**FINAL ELECTRICAL CONNECTION BY CUSTOMER**

THIS SIGN IS INTENDED TO BE INSTALLED IN ACCORDANCE WITH ARTICLE 600 OF THE NATIONAL ELECTRICAL CODE AND/OR OTHER APPLICABLE LOCAL CODES. THIS INCLUDES PROPER GROUNDING & BONDING OF THE SIGN. SIGN WILL BEAR UL LABEL(S).



<b>Design #</b>	<b>0423994Ar1</b>
<b>Sheet</b>	<b>4 of 10</b>
<b>Client</b>	<b>SEVEN BREW COFFEE</b>
<b>Address</b>	1200 E Ogden Ave. Naperville, IL 60563
<b>Account Rep.</b>	WF
<b>Designer</b>	RMS
<b>Date</b>	1/12/24
<b>Approval / Date</b>	
<b>Client</b>	
<b>Sales</b>	
<b>Estimating</b>	
<b>Art</b>	
<b>Engineering</b>	
<b>Landlord</b>	

<b>Revision / Date</b>	
R1-AC-1/17/24: rev F	



**SIDE ELEVATION -** SCALE: 3/16" = 1' - 0"

**CHANDLER SIGNS**  
chandlersigns.com

**National Headquarters** 14201 Sovereign Road #101  
Fort Worth, TX 76155  
(214) 902-2000 Fax (214) 902-2044

**San Antonio** 17319 San Pedro Avenue  
Suite 200  
San Antonio, TX 78232  
(210) 349-3804 Fax (210) 349-8724

**Northeast US** 2301 River Road, Suite 201  
Louisville, KY 40206  
(502) 897-9800 Cell (502) 554-2575

**Georgia** 111 Woodstone Place  
Dawsonville, GA 30534  
(678) 725-8852 Fax (210) 349-8724

**South Texas** PO BOX 125 206 Daral Drive  
Portland, TX 78374  
(361) 563-5599 Fax (361) 643-6533

This drawing is the property of Chandler Signs, LLC. All rights to its use for reproduction are reserved by Chandler Signs, LLC.

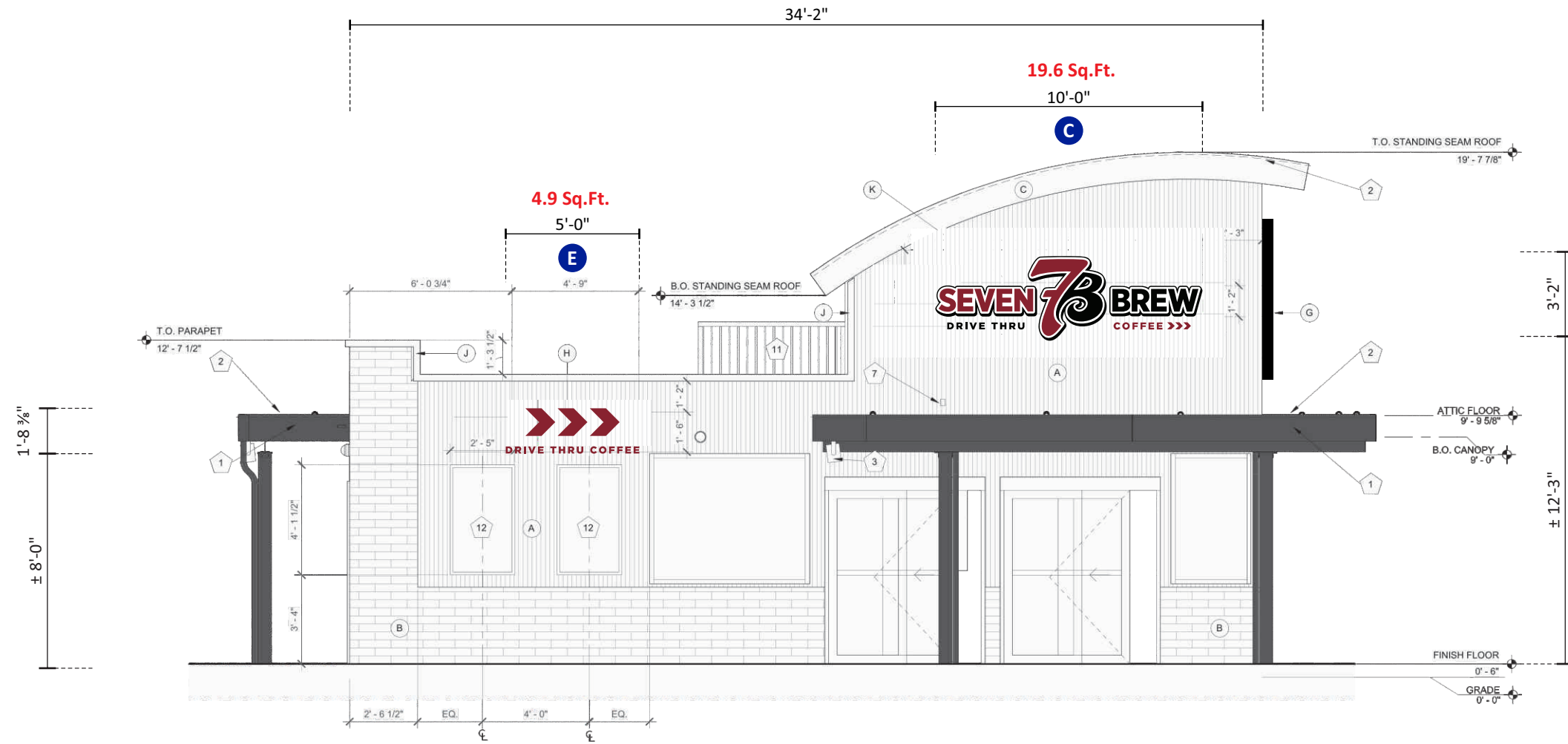
**FINAL ELECTRICAL CONNECTION BY CUSTOMER**

THIS SIGN IS INTENDED TO BE INSTALLED IN ACCORDANCE WITH ARTICLE 600 OF THE NATIONAL ELECTRICAL CODE AND/OR OTHER APPLICABLE LOCAL CODES. THIS INCLUDES PROPER GROUNDING & BONDING OF THE SIGN. SIGN WILL BEAR UL LABEL(S).



<b>Design #</b>	0423994Ar1
<b>Sheet</b>	5 of 10
<b>Client</b>	SEVEN BREW COFFEE
<b>Address</b>	1200 E Ogden Ave. Naperville, IL 60563
<b>Account Rep.</b>	WF
<b>Designer</b>	RMS
<b>Date</b>	1/12/24
<b>Approval / Date</b>	
<b>Client</b>	
<b>Sales</b>	
<b>Estimating</b>	
<b>Art</b>	
<b>Engineering</b>	
<b>Landlord</b>	

<b>Revision / Date</b>	
R1-AC-1/17/24: rev F	



○ DRIVE THRU ELEVATION - SCALE: 3/16" = 1' - 0"



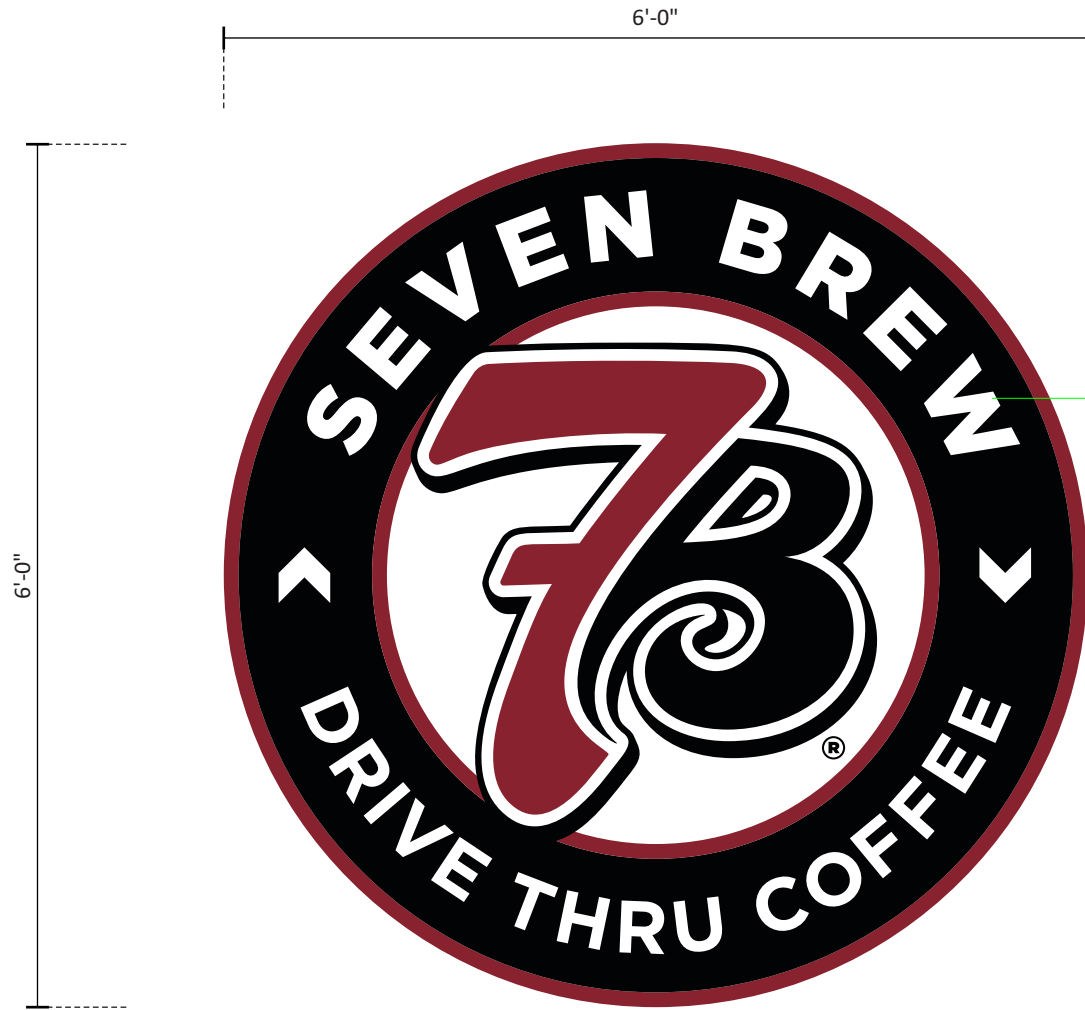
chandlersigns.com

<b>National Headquarters</b>	14201 Sovereign Road #101 Fort Worth, TX 76155 (214) 902-2000 Fax (214) 902-2044
<b>San Antonio</b>	17319 San Pedro Avenue Suite 200 San Antonio, TX 78232 (210) 349-3804 Fax (210) 349-8724
<b>Northeast US</b>	2301 River Road, Suite 201 Louisville, KY 40206 (502) 897-9800 Cell (502) 554-2575
<b>Georgia</b>	111 Woodstone Place Dawsonville, GA 30534 (678) 725-8852 Fax (210) 349-8724
<b>South Texas</b>	PO BOX 125 206 Daral Drive Portland, TX 78374 (361) 563-5599 Fax (361) 643-6533

This drawing is the property of Chandler Signs, LLC. All rights to its use for reproduction are reserved by Chandler Signs, LLC.

**FINAL ELECTRICAL CONNECTION BY CUSTOMER**

THIS SIGN IS INTENDED TO BE INSTALLED IN ACCORDANCE WITH ARTICLE 600 OF THE NATIONAL ELECTRICAL CODE AND/OR OTHER APPLICABLE LOCAL CODES. THIS INCLUDES PROPER GROUNDING & BONDING OF THE SIGN. SIGN WILL BEAR UL LABEL(S).



PERIMETER COPY, ARROWS & "7B" TO BE EMBOSSED ADD'L 1/4"

**COLOR KEY**

- PMS 202 C RED
- BLACK

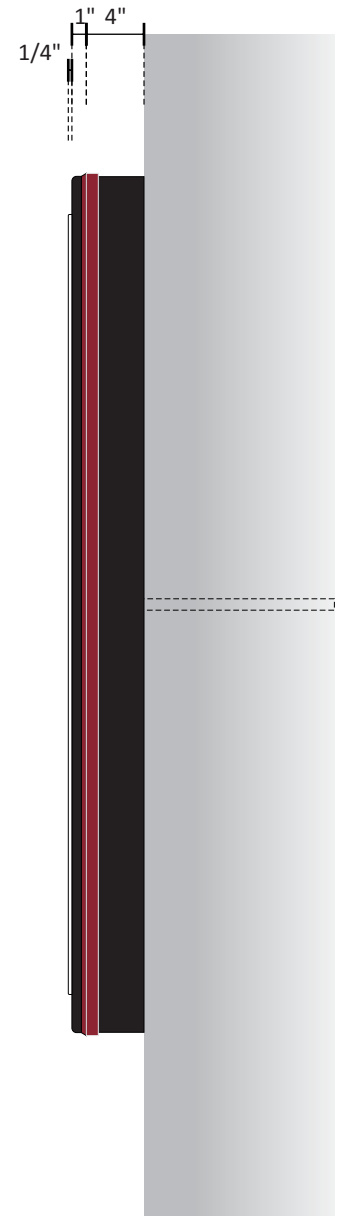
4" DEEP SINGLE FACED ALUMINUM SIGN CABINET  
- RETURNS & BACKS PAINTED BLACK  
INTERIOR PTD LIGHT ENHANCING WHITE

EMBOSSSED FORMED FACE (SEE COLOR KEY)  
- WHITE CIRCLE AREA TO BE DEBOSSSED AROUND "7B" LOGO & COPY AS SHOWN IN PHOTO BELOW

INTERNALLY ILLUMINATED WITH WHITE LEDs  
WHITE TETRA MAX 7100 LEDs - REMOTE POWER SUPPLIES  
CUSTOMER TO PROVIDE POWER TO SIGN

**FLUSH MOUNT MEDALLION IN FRONT FASCIA  
BLOCKING TO BE PROVIDED BY GC PRIOR TO INSTALLATION**

**FIELD SURVEY REQUIRED PRIOR TO MANUFACTURE.**



**END VIEW**

**A S/F ILLUMINATED SIGN** SCALE: 3/4" = 1'-0"  
ONE [1] REQUIRED - MANUFACTURE & INSTALL 36.0 SQ. FT.



**SIMULATED NIGHT VIEW**

<b>Design #</b>	
0423994Ar1	
<b>Sheet</b>	6 of 10
<b>Client</b>	
SEVEN BREW COFFEE	
<b>Address</b>	
1200 E Ogden Ave. Naperville, IL 60563	
<b>Account Rep.</b>	WF
<b>Designer</b>	RMS
<b>Date</b>	1/12/24
<b>Approval / Date</b>	
<b>Client</b>	
<b>Sales</b>	
<b>Estimating</b>	
<b>Art</b>	
<b>Engineering</b>	
<b>Landlord</b>	
<b>Revision / Date</b>	

R1-AC-1/17/24: rev F

**CHANDLER SIGNS**  
chandlersigns.com

**National Headquarters** 14201 Sovereign Road #101  
Fort Worth, TX 76155  
(214) 902-2000 Fax (214) 902-2044

**San Antonio** 17319 San Pedro Avenue  
Suite 200  
San Antonio, TX 78232  
(210) 349-3804 Fax (210) 349-8724

**Northeast US** 2301 River Road, Suite 201  
Louisville, KY 40206  
(502) 897-9800 Call (502) 554-2575

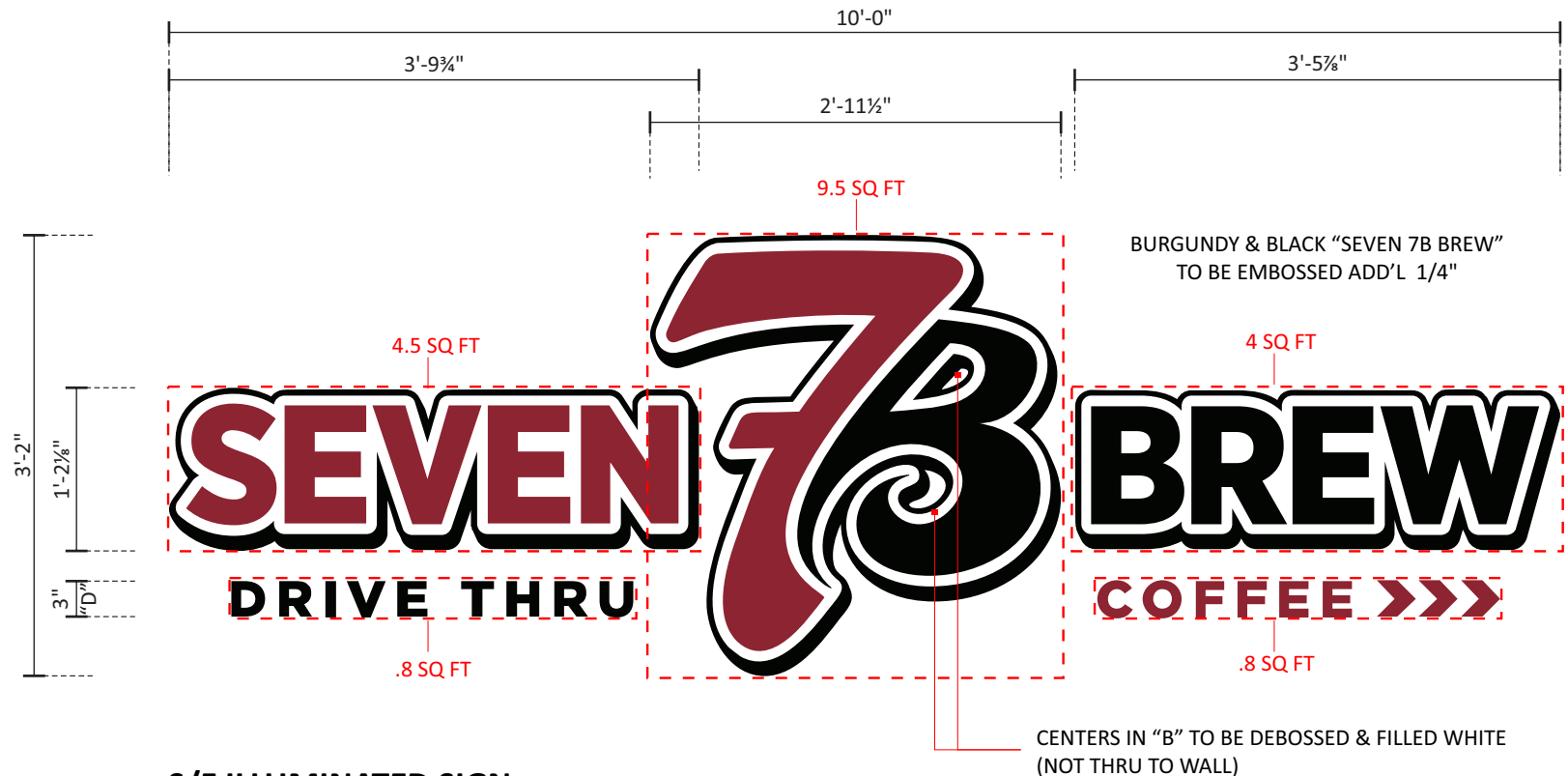
**Georgia** 111 Woodstone Place  
Dawsonville, GA 30534  
(678) 725-8852 Fax (210) 349-8724

**South Texas** PO BOX 125 206 Daral Drive  
Portland, TX 78374  
(361) 563-5599 Fax (361) 643-6533

This drawing is the property of Chandler Signs, LLC. All rights to its use for reproduction are reserved by Chandler Signs, LLC.

**FINAL ELECTRICAL CONNECTION BY CUSTOMER**

THIS SIGN IS INTENDED TO BE INSTALLED IN ACCORDANCE WITH ARTICLE 600 OF THE NATIONAL ELECTRICAL CODE AND/OR OTHER APPLICABLE LOCAL CODES. THIS INCLUDES PROPER GROUNDING & BONDING OF THE SIGN. SIGN WILL BEAR UL LABEL(S).



**"SEVEN 7B BREW":**  
 4" DEEP SINGLE FACED ALUMINUM SIGN  
 CABINETS - RETURNS PAINTED BLACK -  
 INTERIOR PAINTED LIGHT-ENHANCING WHITE

FORMED & EMBOSSED PAN POLYCARBONATE  
 FACES W/ TRANSLUCENT FILM GRAPHICS (SEE COLOR KEY) -  
 BLOCK OUT VINYL AS REQ'D  
 CENTERS IN "B" ON LOGO TO BE DEBOSSSED -  
 SEE EXAMPLE PHOTO BELOW

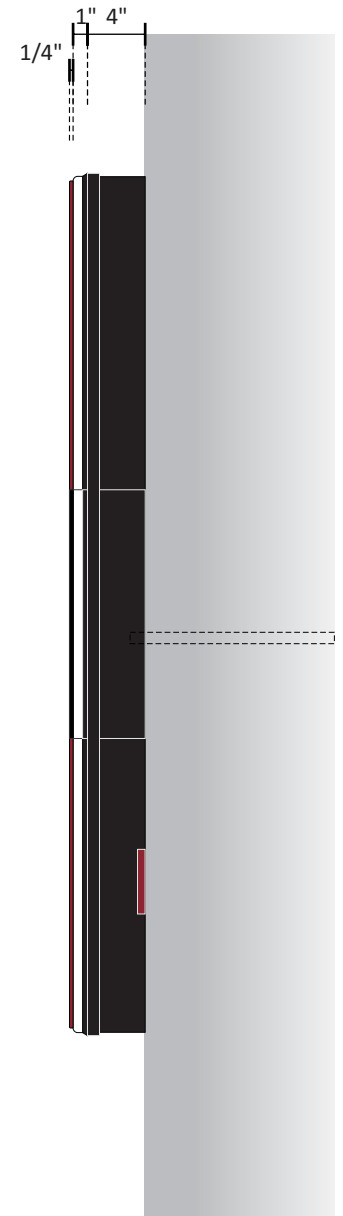
1/4" DIA. WEEP HOLES IN LOW POINTS OF  
 CABINETS w/ ALUMINUM LIGHT SCREENS @  
 EACH WEEP HOLE TO PREVENT LIGHT LEAKS

INTERNALLY ILLUMINATED w/ 7100k WHITE GE  
 TETRAMAX LED's - REMOTE POWER SUPPLIES -  
 CUSTOMER TO PROVIDE POWER TO SIGN

120 - 277 VAC 20A 2-POLE SWITCH w/ BELL  
 MX1050 COVER

TO BE FLUSH MOUNTED TO FASCIA w/ NON-  
 CORROSIVE HARDWARE AS REQ'D

**"DRIVE THRU" & "COFFEE>>>":**  
 1/2" DEEP ALUMINUM FLAT CUT-OUT LETTERS  
 (SEE COLOR KEY) - TO BE STUD-MOUNTED FLUSH  
 TO FASCIA



END VIEW

**BC S/F ILLUMINATED SIGN**

ONE [1] SET(S) REQUIRED - MANUFACTURE & STOCK:

SCALE: 3/4" = 1'-0" **19.6 Sq.Ft. EACH SET**

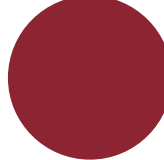

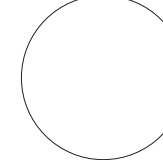
5" DEEP ALUMINUM EMBOSSED-FACE, LED ILLUMINATED "SEVEN 7B BREW" WALL SIGN w/ RAISED VINYL GRAPHICS PER COLOR KEY -

1/2" DEEP FCO's TO READ "DRIVE THRU" & "COFFEE>>>" PAINTED PER COLOR KEY - BACKS DRILLED & TAPPED FOR STUD-MOUNTING



SIMULATED NIGHT VIEW

**BRAND COLORS**

		
<b>PMS 202</b> C: 29.54% M: 95.11% Y: 74.72% K: 29.59%	<b>BLACK</b> C: 0% M: 0% Y: 0% K: 100%	<b>WHITE</b> C: 0% M: 0% Y: 0% K: 0%

Design #	0423994Ar1
Sheet	7 of 10
Client	SEVEN BREW COFFEE
Address	1200 E Ogden Ave. Naperville, IL 60563
Account Rep.	WF
Designer	RMS
Date	1/12/24
Approval / Date	
Client	
Sales	
Estimating	
Art	
Engineering	
Landlord	
Revision / Date	
R1-AC-1/17/24: rev F	

**CHANDLER SIGNS**  
 chandlersigns.com

**National Headquarters** 14201 Sovereign Road #101  
Fort Worth, TX 76155  
(214) 902-2000 Fax (214) 902-2044

**San Antonio** 17319 San Pedro Avenue  
Suite 200  
San Antonio, TX 78232  
(210) 349-3804 Fax (210) 349-8724

**Northeast US** 2301 River Road, Suite 201  
Louisville, KY 40206  
(502) 897-9800 Cell (502) 554-2575

**Georgia** 111 Woodstone Place  
Dawsonville, GA 30534  
(678) 725-8852 Fax (210) 349-8724

**South Texas** PO BOX 125 206 Daral Drive  
Portland, TX 78374  
(361) 563-5599 Fax (361) 643-6533

This drawing is the property of Chandler Signs, LLC. All rights to its use for reproduction are reserved by Chandler Signs, LLC

**FINAL ELECTRICAL CONNECTION BY CUSTOMER**

THIS SIGN IS INTENDED TO BE INSTALLED IN ACCORDANCE WITH ARTICLE 600 OF THE NATIONAL ELECTRICAL CODE AND/OR OTHER APPLICABLE LOCAL CODES. THIS INCLUDES PROPER GROUNDING & BONDING OF THE SIGN. SIGN WILL BEAR UL LABEL(S).

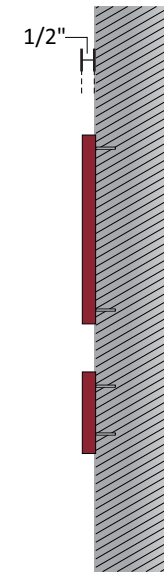
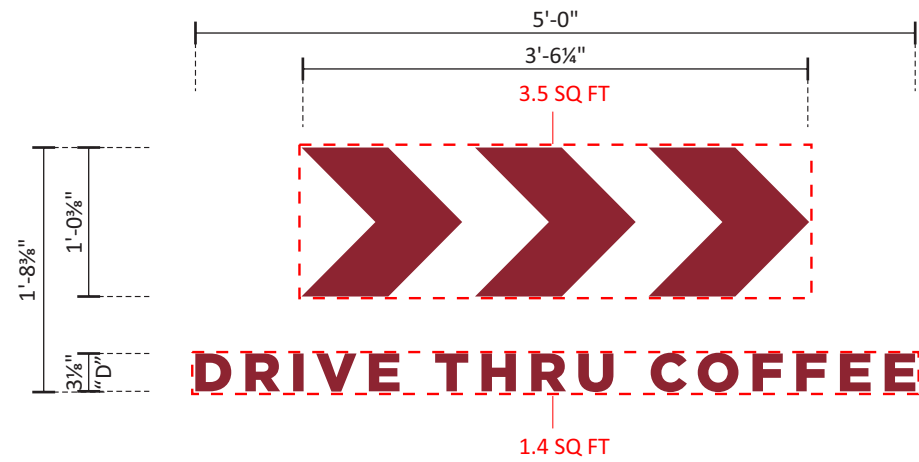




<b>Design #</b>	<b>0423994Ar1</b>
<b>Sheet</b>	<b>8 of 10</b>
<b>Client</b>	<b>SEVEN BREW COFFEE</b>
<b>Address</b>	1200 E Ogden Ave. Naperville, IL 60563
<b>Account Rep.</b>	WF
<b>Designer</b>	RMS
<b>Date</b>	1/12/24

Approval / Date	
<b>Client</b>	
<b>Sales</b>	
<b>Estimating</b>	
<b>Art</b>	
<b>Engineering</b>	
<b>Landlord</b>	

Revision / Date	
R1-AC-1/17/24: rev F	



SIDE VIEW N.T.S.

**DE FLAT CUT-OUT SIGN** SCALE: 3/4" = 1'-0"  
 TWO [2] SET(S) REQUIRED - MANUFACTURE & STOCK: **4.9 Sq.Ft. EACH SET**

1/2" DEEP FCO's TO READ "DRIVE THRU COFFEE>>>" -  
 PAINTED TO MATCH PMS 202c BURGUNDY --  
 BACKS DRILLED & TAPPED FOR FLUSH STUD-MOUNTING -  
 NON-ILLUMINATED



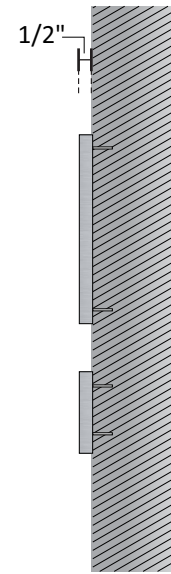
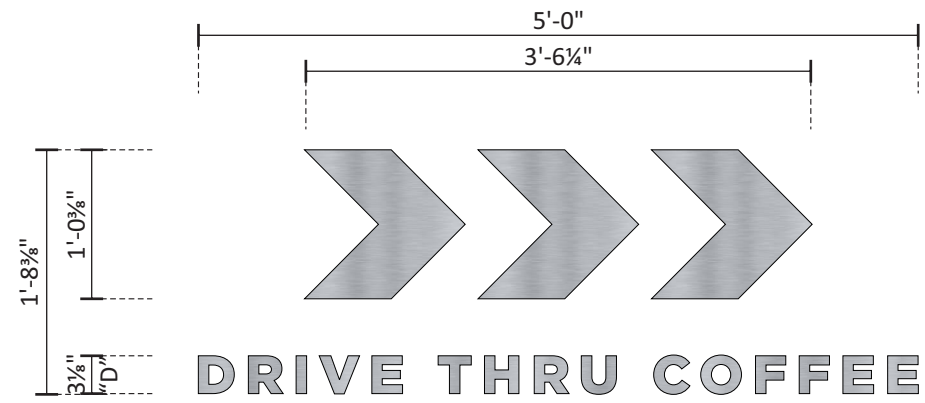
<b>chandlersigns.com</b>	
<b>National Headquarters</b>	14201 Sovereign Road #101 Fort Worth, TX 76155 (214) 902-2000 Fax (214) 902-2044
<b>San Antonio</b>	17319 San Pedro Avenue Suite 200 San Antonio, TX 78232 (210) 349-3804 Fax (210) 349-8724
<b>Northeast US</b>	2301 River Road, Suite 201 Louisville, KY 40206 (502) 897-9800 Cell (502) 554-2575
<b>Georgia</b>	111 Woodstone Place Dawsonville, GA 30534 (678) 725-8852 Fax (210) 349-8724
<b>South Texas</b>	PO BOX 125 206 Daral Drive Portland, TX 78374 (361) 563-5599 Fax (361) 643-6533

This drawing is the property of  
 Chandler Signs, LLC  
 All rights to its use for reproduction  
 are reserved by Chandler Signs, LLC

**FINAL ELECTRICAL CONNECTION BY CUSTOMER**

THIS SIGN IS INTENDED TO BE INSTALLED IN ACCORDANCE WITH ARTICLE 600 OF THE NATIONAL ELECTRICAL CODE AND/OR OTHER APPLICABLE LOCAL CODES. THIS INCLUDES PROPER GROUNDING & BONDING OF THE SIGN. SIGN WILL BEAR UL LABEL(S).





**END VIEW**

**F FLAT CUT-OUT SIGN** SCALE: 3/4" = 1'-0"  
 ONE [1] SET REQ'D - MANUFACTURE & INSTALL:

1/2" THICK ALUMINUM FCO'S TO READ ">>> DRIVE THRU COFFEE" -  
 BRUSHED HORIZONTAL GRAIN FINISH -  
 BACKS DRILLED & TAPPED FOR FLUSH STUD-MOUNTING -  
 NON-ILLUMINATED

**NOTE: VARIANCE REQUIRED FOR THIS SIGN**

<b>Design #</b>	
0423994Ar1	
<b>Sheet</b> 9 of 10	
<b>Client</b>	
SEVEN BREW COFFEE	
<b>Address</b>	
1200 E Ogden Ave. Naperville, IL 60563	
<b>Account Rep.</b>	WF
<b>Designer</b>	RMS
<b>Date</b>	1/12/24
<b>Approval / Date</b>	
<b>Client</b>	
<b>Sales</b>	
<b>Estimating</b>	
<b>Art</b>	
<b>Engineering</b>	
<b>Landlord</b>	
<b>Revision / Date</b>	
R1-AC-1/17/24: rev F	



chandlersigns.com

<b>National Headquarters</b>	14201 Sovereign Road #101 Fort Worth, TX 76155 (214) 902-2000 Fax (214) 902-2044
<b>San Antonio</b>	17319 San Pedro Avenue Suite 200 San Antonio, TX 78232 (210) 349-3804 Fax (210) 349-8724
<b>Northeast US</b>	2301 River Road, Suite 201 Louisville, KY 40206 (502) 897-9800 Cell (502) 554-2575
<b>Georgia</b>	111 Woodstone Place Dawsonville, GA 30534 (678) 725-8852 Fax (210) 349-8724
<b>South Texas</b>	PO BOX 125 306 Daral Drive Portland, TX 78374 (361) 563-5599 Fax (361) 643-6533

This drawing is the property of Chandler Signs, LLC. All rights to its use for reproduction are reserved by Chandler Signs, LLC.

**FINAL ELECTRICAL CONNECTION BY CUSTOMER**

THIS SIGN IS INTENDED TO BE INSTALLED IN ACCORDANCE WITH ARTICLE 600 OF THE NATIONAL ELECTRICAL CODE AND/OR OTHER APPLICABLE LOCAL CODES. THIS INCLUDES PROPER GROUNDING & BONDING OF THE SIGN. SIGN WILL BEAR UL LABEL(S).

