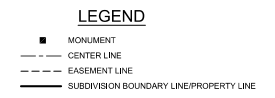
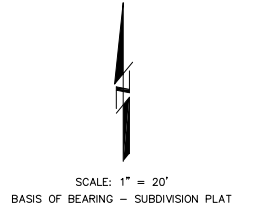
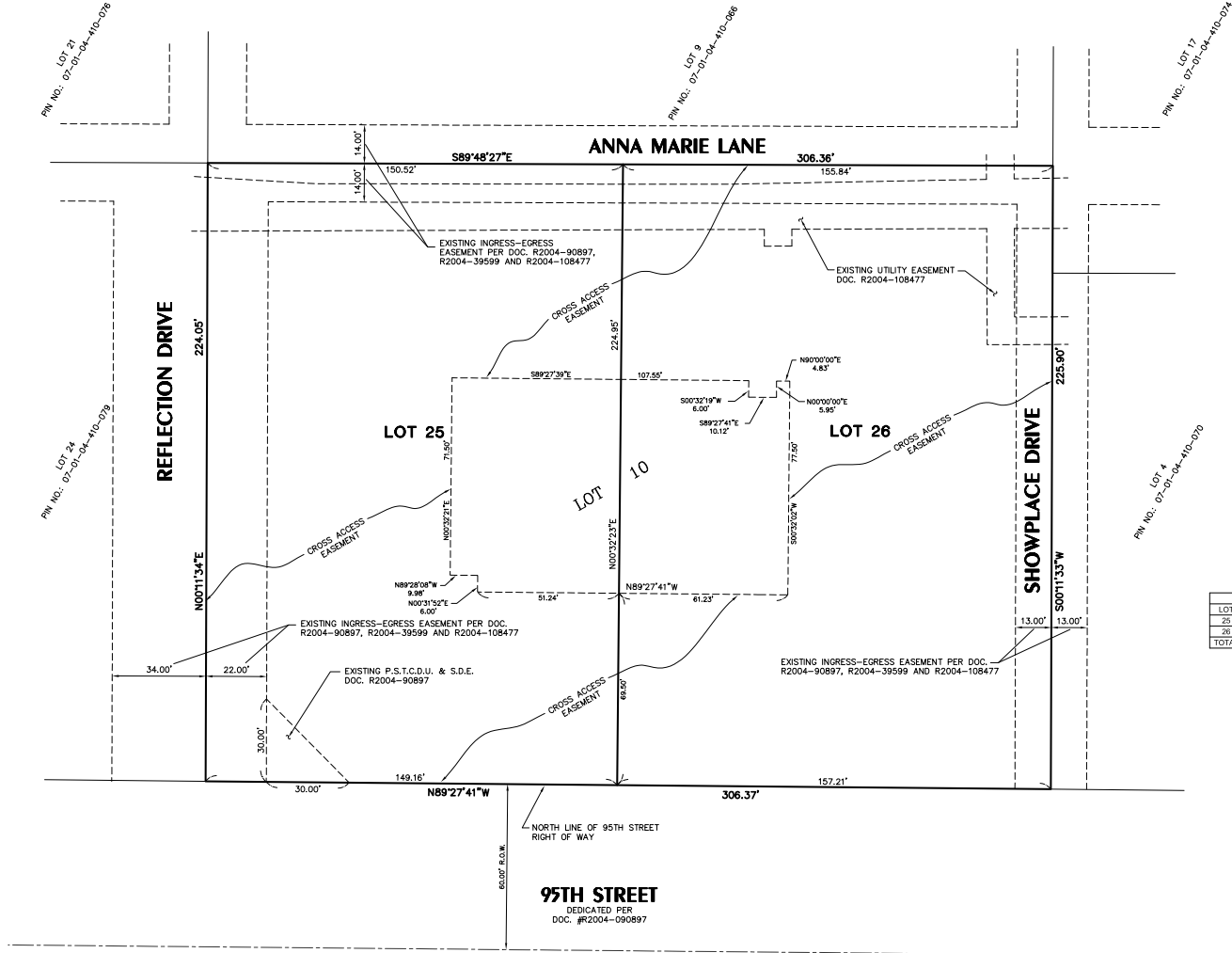


# PRELIMINARY / FINAL PLAT OF SUBDIVISION OF NAPERVILLE ACM AND DOG HAUS RESUBDIVISION

PART OF THE EAST HALF OF THE SOUTHEAST QUARTER OF SECTION 4, TOWNSHIP 37 NORTH, RANGE 9  
EAST OF THE THIRD PRINCIPAL MERIDIAN, WILL COUNTY, ILLINOIS.

THIS PLAT HAS BEEN SUBMITTED FOR  
RECORDING BY AND RETURN TO:  
NAME: NAPERVILLE CITY CLERK  
ADDRESS: 400 S. EAGLE STREET  
NAPERVILLE, IL 62540



AREA SUMMARY TABLE		
LOT	LOT AREA	EASEMENT AREA
25	33,630 S.F.	8,454 S.F.
26	35,285 S.F.	6,774 S.F.
<b>TOTAL</b>	<b>68,924 S.F.</b>	<b>15,258 S.F.</b>

**ABBREVIATIONS**

N - NORTH  
S - SOUTH  
E - EAST  
W - WEST  
M - MEASURED  
R - RECORD  
S.F. - SQUARE FEET

- SURVEYOR NOTES**
1. 3/4 INCH DIAMETER X 24 INCH IRON PIPES SET AT ALL LOT CORNERS UNLESS OTHERWISE NOTED.
  2. ALL MEASUREMENTS AND DISTANCES ARE SHOWN IN U.S. FEET AND DECIMAL PARTS THEREOF.
  3. ALL EASEMENTS ARE HEREBY GRANTED UNLESS OTHERWISE NOTED.

**OWNER:**  
AMERICAN DEVELOPMENT PARTNERS  
ATTN: MANNY BUTERA  
P.O. BOX 681982  
FRANKLIN, TENNESSEE 37064  
615-368-3412  
manny@americandevelopmentpartners.com

REVISED: 11-9-19  
REVISED: 10-3-19  
REVISED: 7-9-19  
REVISED: 6-11-19  
REVISED: 5-8-19  
REVISED: 2-18-19  
PREPARED: 1-10-19

CITY OF NAPERVILLE PROJECT NO.: 19-10000046

**INTECH CONSULTANTS, INC.**  
1989 UNIVERSITY LANE, SUITE D  
LESLIE, ILLINOIS 60532  
PHONE: 630-964-5656  
EMAIL: intech@intechconsultants.com

**ENGINEERS - SURVEYORS**  
ILLINOIS REGISTRATION NO. 184-016160

SHEET No. 1 of 2    JOB No.: 97013A-10

M:\2020\97013A-10\97013A-10.dwg, PLAT, 1/18/2019 10:11 AM, LSP

PRELIMINARY / FINAL PLAT OF SUBDIVISION

