

DATE:	08/07/2023
PROJECT NO:	23-012
DRAWN BY:	ZF
CHECKED BY:	BC
REVISIONS:	

TOMMY CAR WASH SYSTEMS
1440 IL ROUTE 49
NAPERVILLE, IL 60014

P3072

Illinois Design Firm
Registration # 184008547-0001

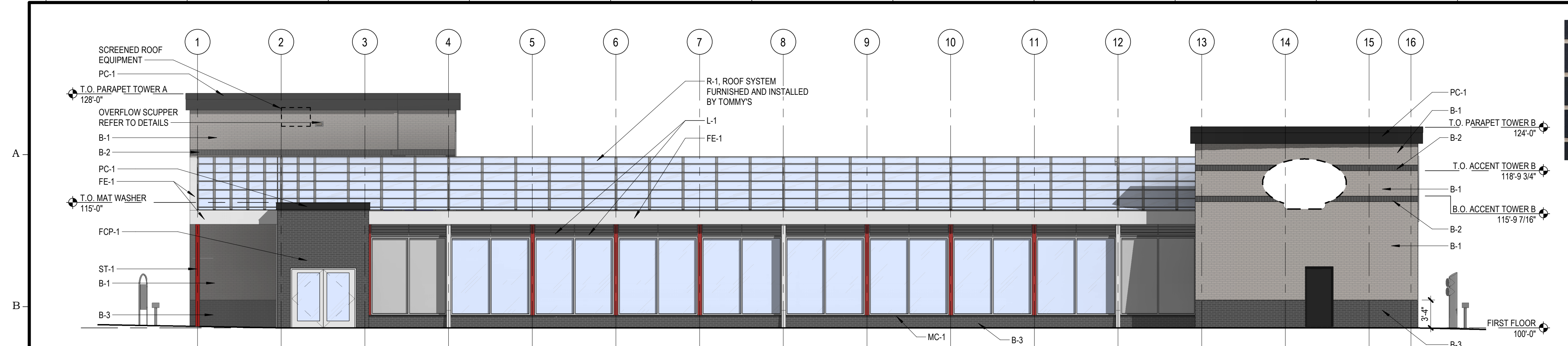
NOT FOR CONSTRUCTION

CHRISTIANSON COMPANIES
PH. (701) 281-9500
FAX (701) 281-9501
4609 33RD AVE. S.
SUITE 400
FARGO, ND 58104

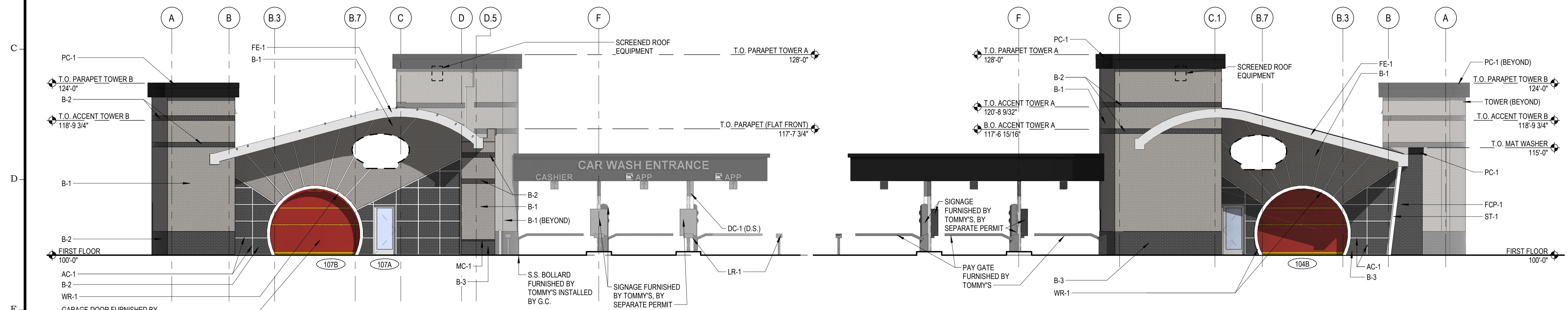
PRG DESIGN
PH. (701) 499-0212
FAX (701) 281-9501

SHEET DESCRIPTION:
EXTERIOR ELEVATIONS
(COLORED)

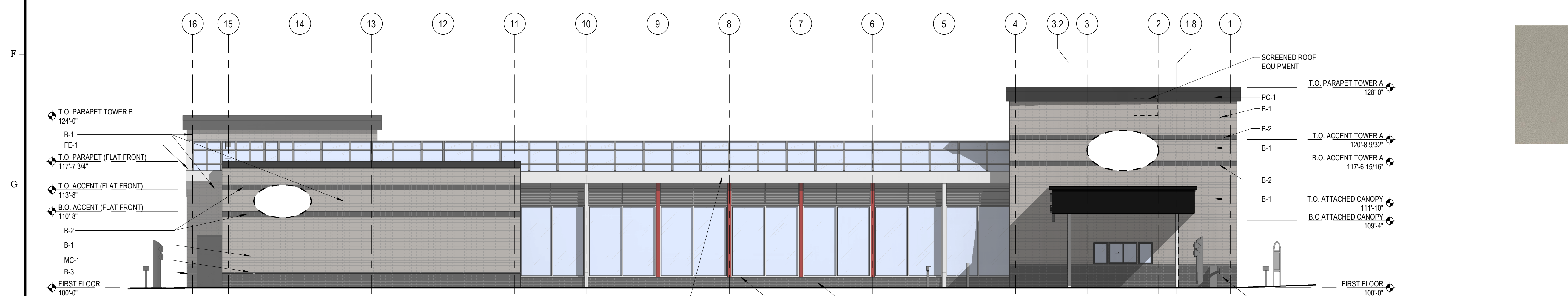
Sheet
A202



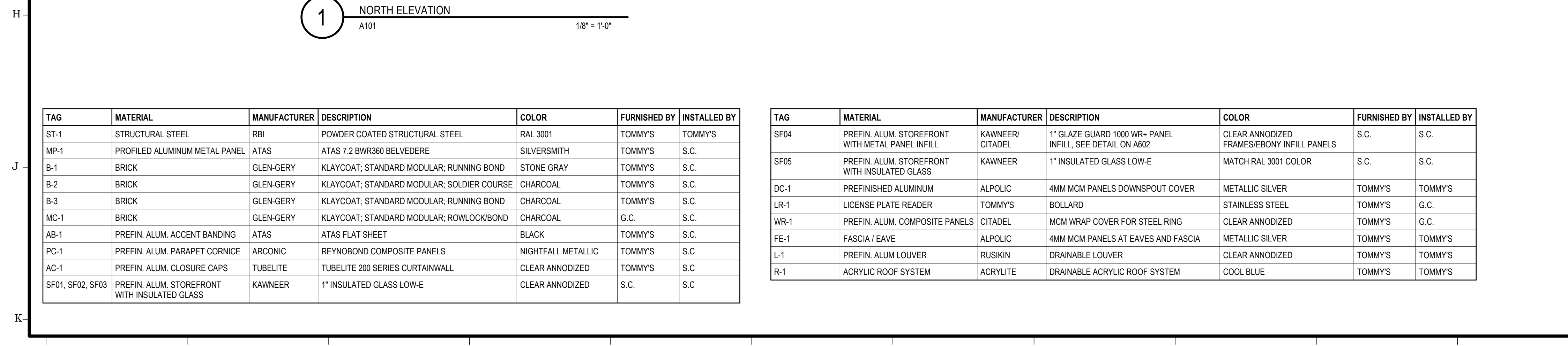
3 SOUTH ELEVATION
A101
1/8" = 1'-0"



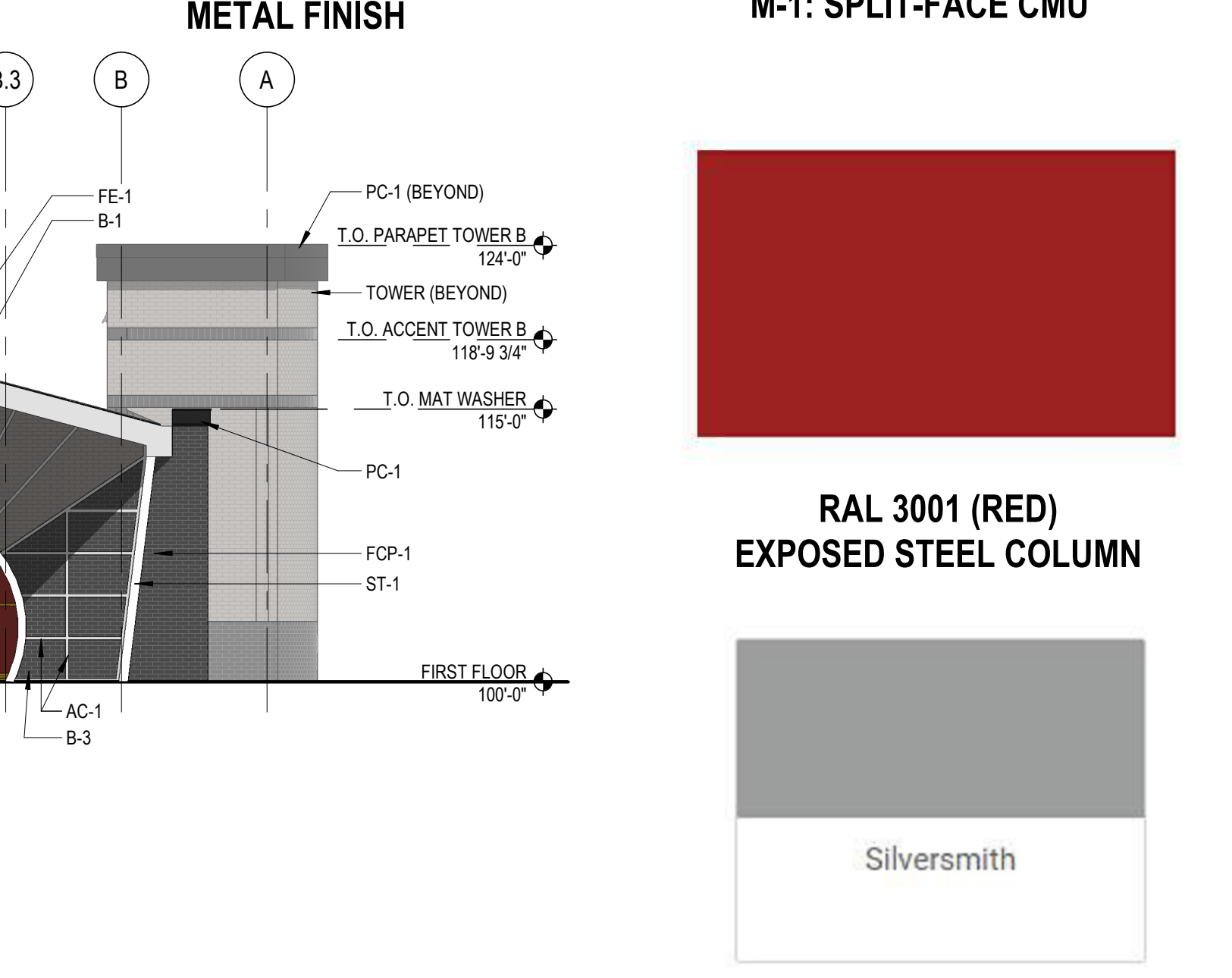
2 EAST ELEVATION - EXIT END
A101
1/8" = 1'-0"



4 WEST ELEVATION - ENTRY END
A101
1/8" = 1'-0"



1 NORTH ELEVATION
A101
1/8" = 1'-0"



EXTERIOR BUILDING ELEVATION MATERIAL CALCULATION									
NORTH BUILDING ELEVATION					EAST BUILDING ELEVATION				
BRICK	MTL CLADDING	EXPOSED STL	RED COLOR	ROOF MATER.	WDW/DOOR	MTL LOUVERS	TOTALS	EXCLUDED MATERIALS	INCLUDED MATERIALS
1489.2 SF (85.5%)	209.9 SF (12.1%)	42.3 SF (2.4%)	42.3 SF (2.4%)	745.6 SF (55.1%)	679.3 SF (55.1%)	202.5 SF (55.1%)	3,368.8 SF (100.0%)	1,627.4 SF (48.3%)	1,741.4 SF (51.7%)
EAST BUILDING ELEVATION					SOUTH BUILDING ELEVATION				
873.1 SF (83.0%)	178.9 SF (17.0%)	0.0 SF (0.0%)	110.5 SF (9.3%)	0.0 SF (0.0%)	131.5 SF (100.0%)	0.0 SF (0.0%)	1,183.5 SF (100.0%)	110.8 SF (9.3%)	1,052.0 SF (88.3%)
SOUTH BUILDING ELEVATION					WEST BUILDING ELEVATION				
1102.7 SF (75.0%)	311.0 SF (21.0%)	58.2 SF (4.0%)	58.2 SF (4.0%)	790.2 SF (41.7%)	963.3 SF (50.8%)	142.5 SF (7.5%)	3,367.9 SF (100.0%)	1,895.0 SF (56.3%)	1,471.9 SF (43.7%)
WEST BUILDING ELEVATION					TOTALS				
885.2 SF (83.3%)	178.0 SF (16.7%)	0.0 SF (0.0%)	98.8 SF (8.4%)	0.0 SF (0.0%)	119.8 SF (100.0%)	0.0 SF (0.0%)	1,183.0 SF (100.0%)	119.8 SF (10.1%)	1,063.2 SF (43.7%)

TAG	MATERIAL	MANUFACTURER	DESCRIPTION	COLOR	FURNISHED BY	INSTALLED BY
ST-1	STRUCTURAL STEEL	RBI	POWDER COATED STRUCTURAL STEEL	RAL 3001	TOMMY'S	TOMMY'S
MP-1	PROFILLED ALUMINUM METAL PANEL	ATAS	ATAS 7.2 BWR380 BELVEDERE	SILVERSMITH	TOMMY'S	S.C.
B-1	BRICK	GLEN-GERY	KLAYCOAT; STANDARD MODULAR; RUNNING BOND	STONE GRAY	TOMMY'S	S.C.
B-2	BRICK	GLEN-GERY	KLAYCOAT; STANDARD MODULAR; SOLDIER COURSE	CHARCOAL	TOMMY'S	S.C.
B-3	BRICK	GLEN-GERY	KLAYCOAT; STANDARD MODULAR; RUNNING BOND	CHARCOAL	TOMMY'S	S.C.
MC-1	BRICK	GLEN-GERY	KLAYCOAT; STANDARD MODULAR; ROWLOCK/BOND	CHARCOAL	G.C.	S.C.
AB-1	PREFIN. ALUM. ACCENT BANDING	ATAS	ATAS FLAT SHEET	BLACK	TOMMY'S	S.C.
PC-1	PREFIN. ALUM. PARAPET CORNICE	ARCONIC	REYNOBOND COMPOSITE PANELS	NIGHTFALL METALLIC	TOMMY'S	S.C.
AC-1	PREFIN. ALUM. CLOSURE CAPS	TUBELITE	TUBELITE 200 SERIES CURTAINWALL	CLEAR ANNOIDIZED	TOMMY'S	S.C.
SF01, SF02, SF03	PREFIN. ALUM. STOREFRONT WITH INSULATED GLASS	KAWNEER	1" INSULATED GLASS LOW-E	CLEAR ANNOIDIZED	S.C.	S.C.

TAG	MATERIAL	MANUFACTURER	DESCRIPTION	COLOR	FURNISHED BY	INSTALLED BY
SF04	PREFIN. ALUM. STOREFRONT WITH METAL PANEL INFILL	KAWNEER/CITADEL	1" GLAZE GUARD 1000 WR-1 PANEL INFILL. SEE DETAIL ON A602	CLEAR ANNOIDIZED FRAMES/EBONY INFILL PANELS	S.C.	S.C.
SF05	PREFIN. ALUM. STOREFRONT WITH INSULATED GLASS	KAWNEER	1" INSULATED GLASS LOW-E	MATCH RAL 3001 COLOR	S.C.	S.C.
DC-1	PREFINISHED ALUMINUM	ALPOLIC	4MM MCM PANELS DOWNPOUT COVER	METALLIC SILVER	TOMMY'S	TOMMY'S
LR-1	LICENSE PLATE READER	TOMMY'S	BOLLARD	STAINLESS STEEL	TOMMY'S	G.C.
WR-1	PREFIN. ALUM. COMPOSITE PANELS	CITADEL	MCM WRAP COVER FOR STEEL RING	CLEAR ANNOIDIZED	TOMMY'S	G.C.
FE-1	FASCIA / EAVE	ALPOLIC	4MM MCM PANELS AT EAVES AND FASCIA	METALLIC SILVER	TOMMY'S	TOMMY'S
L-1	PREFIN. ALUM. LOUVER	RUSKIN	DRAINABLE LOUVER	CLEAR ANNOIDIZED	TOMMY'S	TOMMY'S
R-1	ACRYLIC ROOF SYSTEM	ACRYLITE	DRAINABLE ACRYLIC ROOF SYSTEM	COOL BLUE	TOMMY'S	TOMMY'S