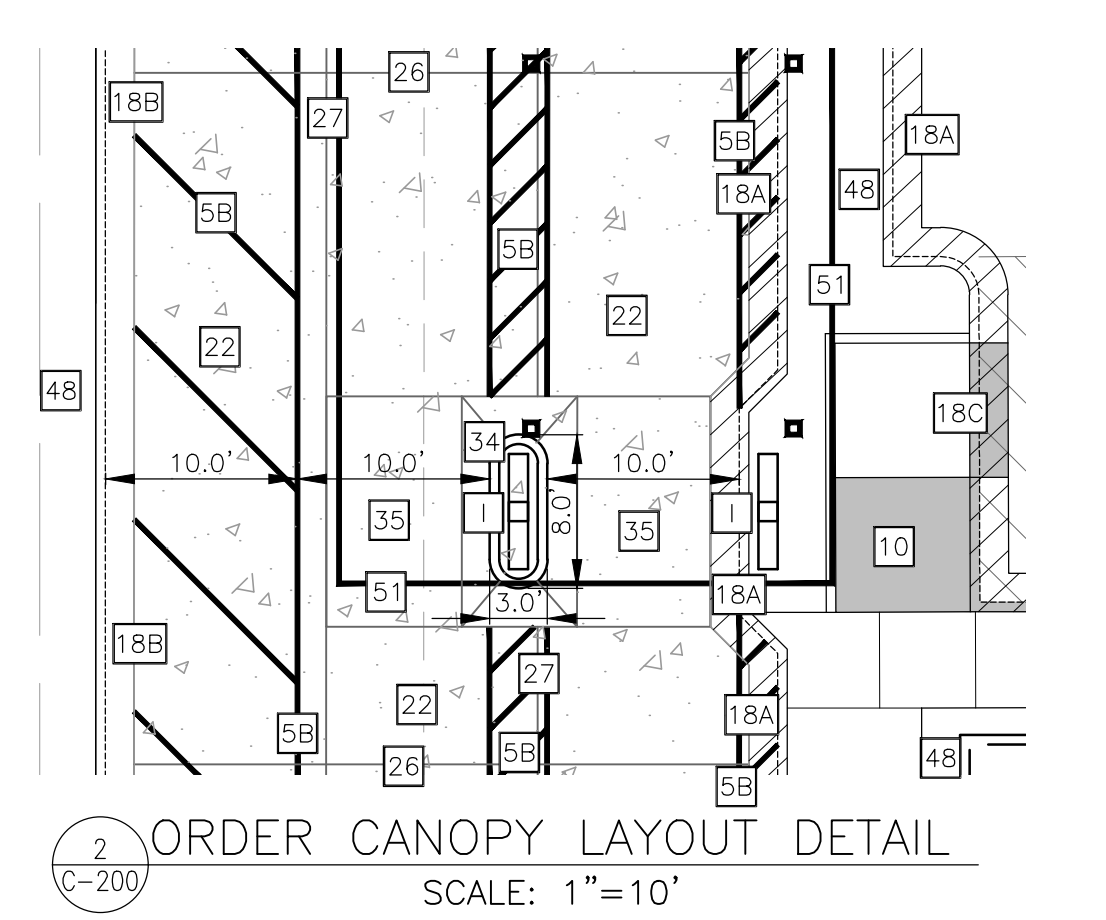
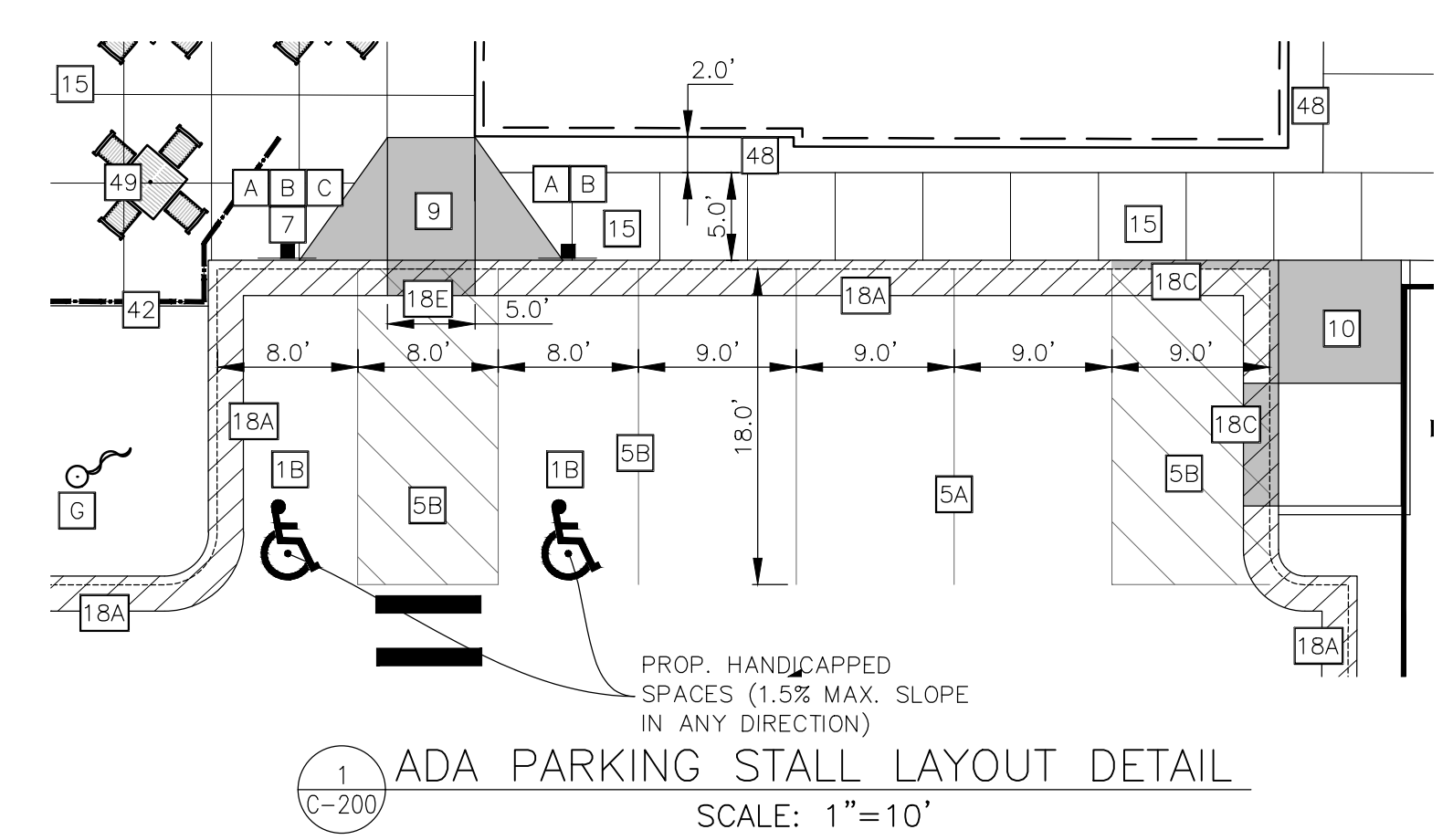
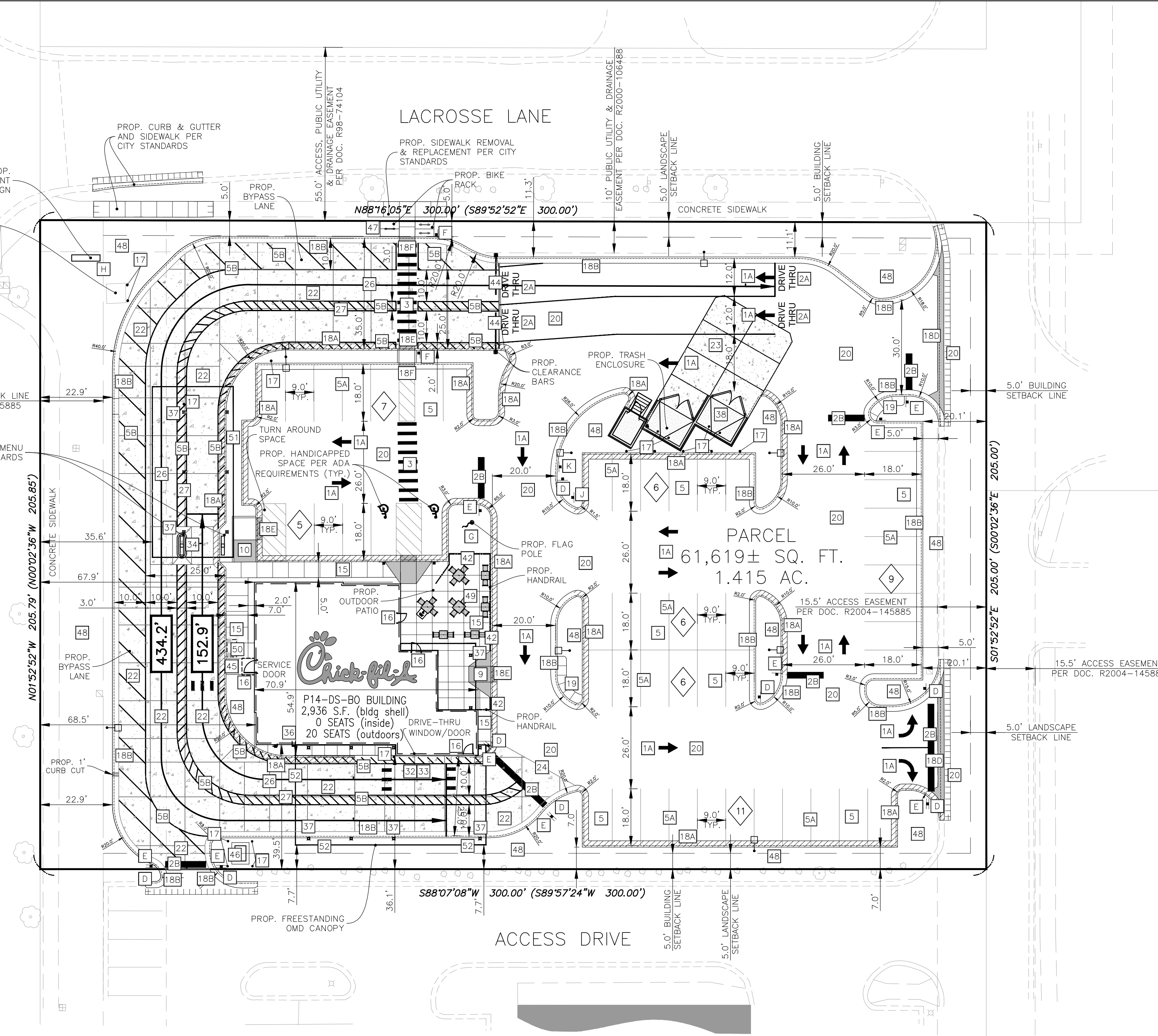


SITE PLAN DESIGN NOTES & KEY PLAN

- 1A DIRECTIONAL ARROW (C-400)
- 1B PAINTED HANDICAP PARKING SYMBOL (C-504)
- 2A DRIVE-THRU GRAPHICS (C-403)
- 2B STOP BAR GRAPHIC (C-400)
- 3 CROSSWALK MARKINGS (C-400)
- 4 MULTI-LANE DIRECTIONAL GRAPHICS (C-400)
- 5 STANDARD OR HANDICAP PARKING STALL PER CODE (C-400)
- 5A 4" SOLID WHITE STRIPING
- 5B 4" SOLID YELLOW STRIPING
- 5C 4" SKIP-DASH YELLOW STRIPING
- 6 SOLID PLASTIC WHEEL STOP (C-400)
- 7 BOLLARD MOUNTED SIGN (C-400)
- 8 CURB RAMP W/ SHORT FLARED SIDES (CRASSED AREAS) (C-400)
- 9 CURB RAMP W/ FLARED SIDES (IN SIDEWALK) (C-400)
- 10 RETURNED CURB HANDICAP RAMP (C-400)
- 11 SIDEWALK ACCESSIBLE RAMP (C-400)
- 12 DETECTABLE WARNING DEVICE (C-400)
- 13 TYPICAL ADA RAMP & HANDRAIL (C-400)
- 14 CONCRETE SIDEWALK (C-401)
- 15 CONCRETE SIDEWALK W/ CURB & GUTTER (C-401)
- 16 ENTRY DOOR FROST SLAB DETAIL (C-401)
- 17 CONCRETE BOLLARD (C-401)
- 18 CONCRETE CURB & GUTTER (C-401)
- 18A SPILLING CURB & GUTTER
- 18B CATCHING CURB & GUTTER
- 18C DEPRESSED SPILLING CURB & GUTTER
- 18D DEPRESSED CATCHING CURB & GUTTER
- 18E SPILLING GUTTER SECTION AT ACCESSIBLE RAMP
- 18F CATCHING GUTTER SECTION AT ACCESSIBLE RAMP
- 18G MOUNTABLE CURB & GUTTER
- 19 LANDSCAPE & IRRIGATION PROTECTOR (C-401)
- 20 TYPICAL HMAC PAVEMENT SECTION (C-402)
- 21 BUTT JOINT (C-402)
- 22 CONCRETE PAVEMENT DRIVE-THRU LANE (C-402)
- 23 CONCRETE APRON AT TRASH ENCLOSURE (C-402)
- 24 PAVEMENT EDGE DETAIL (START & END OF DRIVE-THRU LANES) (C-402)
- 25 CONCRETE PAVEMENT SECTIONS (C-402)
- 26 TRANSVERSE & LONGITUDINAL CONTRACTION JOINT (C-402)
- 27 TRANSVERSE & LONGITUDINAL DOWELED CONSTRUCTION JOINT (C-402)
- 28 CONTRACTION JOINT (C-402)
- 29 KEYED CONSTRUCTION JOINT (C-402)
- 30 LONGITUDINAL BUTT JOINT (C-402)
- 31 EXPANSION JOINT (C-402)
- 32 DRIVE-THRU PLAN - FLUSH WITH FFE (C-403)
- 33 DRIVE-THRU ISOMETRIC (C-403)
- 34 DRIVE-THRU ORDER POINT ISLAND (C-403)
- 35 MENU BOARD LOOP DETECTION SYSTEM (C-403)
- 36 BUILDING DOWNSPOUT CONNECTION (TO SITE DRAINAGE SYSTEM) (C-403)
- 37 CANOPY DOWNSPOUT CONNECTION (TO SITE DRAINAGE SYSTEM) (C-403)
- 38 SCREENED REFUSE ENCLOSURE (REFER TO ARCH PLANS FOR ADDITIONAL DETAILS) (C-403)
- 39 CLEAN-OUT (OUTSIDE OF BUILDING) (C-403)
- 40 THICKENED PAVEMENT @ STRUCTURES (C-403)
- 41 STORM STRUCTURE WEEP HOLE DETAILS (C-403)
- 42 ALUMINUM HANDRAIL (REFER TO ARCH PLANS)
- 43 OMITTED
- 44 DRIVE-THRU CLEARANCE BAR (REFER TO SIGNAGE PACKAGE)
- 45 GREASE TRAP
- 46 PROPOSED TRANSFORMER
- 47 BIKE RACK
- 48 LANDSCAPED AREA
- 49 TYPICAL LOCATION FOR OUTDOOR TABLES (REFER TO ARCH PLANS)
- 50 CONCRETE PAD FOR OPTIONAL CASH STATION
- 51 FREE-STANDING ORDER POINT CANOPY
- 52 FREE-STANDING OUTSIDE MEAL DELIVERY CANOPY



SITE DATA:

- ZONING: B3 PUD (GENERAL COMMERCIAL DISTRICT)
- LOT SIZE: 73,927± SQ. FT. (1.697 AC.)

BUILDING AREA:

- BUILDING FOOT PRINT: 2,936± SQ. FT.
- FLOOR AREA RATIO (F.A.R.) = 0.039
- NUMBER OF EMPLOYEES DURING LARGEST SHIFT = 15 EMPLOYEES

PARKING DATA:

- TYPICAL PARKING WIDTH: 9.0'
- TYPICAL PARKING LENGTH: 18.0'
- TYPICAL ISLE WIDTH: 26.0'
- REGULAR PARKING SPACES PROVIDED: 48
- ADA PARKING SPACES PROVIDED: 2
- TOTAL PARKING SPACES PROVIDED: 50

PARKING FORMULA:
17 SPACES PER 1,000 SQ. FT. OF GFA (2,936/1,000 X 17 = 49.9 STALLS)

- TOTAL PARKING STALLS REQUIRED = 50 STALLS
- TOTAL BICYCLE PARKING REQUIRED = 5
- TOTAL BICYCLE PARKING PROVIDED = 6

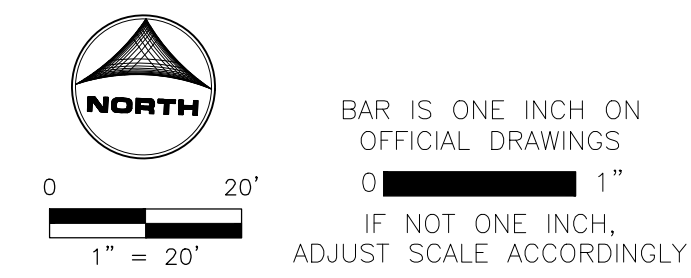
HATCH LEGEND

- [Symbol] DENOTES STANDARD PAVEMENT SECTION
- [Symbol] DENOTES CONCRETE SECTION
- [Symbol] DENOTES PROP. SIDEWALK
- [Symbol] DENOTES AREA OF DEPRESSED SIDEWALK
- [Symbol] DENOTES AREA OF DEPRESSED CURB AND GUTTER WITH LENGTH NOTED ON PLANS.
- [Symbol] DENOTES REVERSE CURB & GUTTER

SIGN LEGEND

** CONTRACTOR TO REFER TO THE SIGNAGE PACKAGE FOR PLACEMENT AND SPECIFICATIONS OF ALL SIGNS **

- A HANDICAP PARKING SIGN (SEE SIGNAGE PACKAGE) R7-8; 12" X 18" (TYP.)
- B HANDICAP PARKING FINE SIGN (SEE SIGNAGE PACKAGE) 6" X 12" (TYP.)
- C "VAN ACCESSIBLE" SIGN (SEE SIGNAGE PACKAGE) R7-BP; 6" X 12" (TYP.)
- D "DO NOT ENTER" SIGN (SEE SIGNAGE PACKAGE) R5-1; 24" X 24" (TYP.)
- E STOP SIGN (SEE SIGNAGE PACKAGE) R1-1; 30" X 30" (TYP.)
- F CFA PEDESTRIAN CROSSING SIGN (SEE SIGNAGE PACKAGE)
- G FLAG POLE (SEE SIGNAGE PACKAGE)
- H CFA MONUMENT OR PYLON SIGN
- I DIGITAL DRIVE-THRU MENU BOARDS
- J DENOTES "LEFT TURN ONLY" R3-SL, 30" X 36" (TYP.)
- K DENOTES "RIGHT TURN ONLY" R3-SR, 30" X 36" (TYP.)



PRELIMINARY
NOT FOR CONSTRUCTION



Chick-fil-A
Chick-fil-A
5200 Buffington Road
Atlanta, Georgia
30349-2998



CHICK-FIL-A
ROUTE 59 & LACROSSE LN. (IL) DTO
3320 S. ILLINOIS ROUTE 59
NAPERVILLE, IL 60564

FSR# 05844

REVISION SCHEDULE

NO.	DATE	DESCRIPTION
1	08/16/24	ISSUED FOR PERMIT

PRELIMINARY

ENGINEER'S PROJECT #	2402052
PRINTED FOR	PRELIMINARY
DATE	07/08/2024
DRAWN BY:	MRJ
CHECKED BY:	JFV

Information contained on this drawing and in all digital files produced for above named project may not be reproduced in any manner without express written or verbal consent from authorized project representatives.

SHEET
SITE PLAN

SHEET NUMBER
C-200