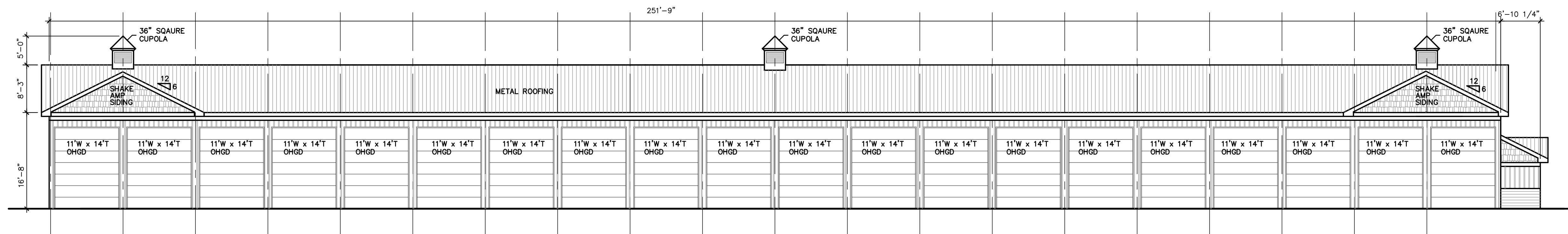
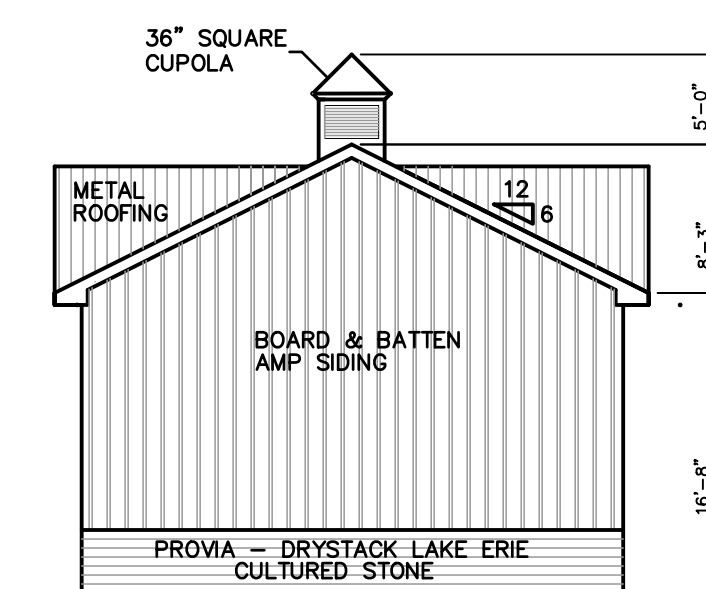


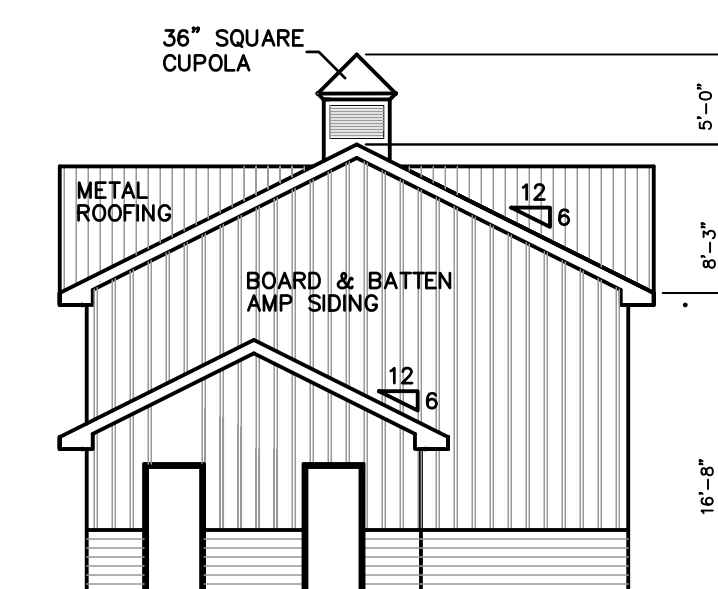
1 SOUTH ELEVATION SCHEME 1E
SCALE: 3/32"=1'-0"



2 NORTH ELEVATION SCHEME 1E
SCALE: 3/32"=1'-0"



4 EAST ELEVATION SCHEME 1E
SCALE: 3/32"=1'-0"



3 WEST ELEVATION SCHEME 1E
SCALE: 3/32"=1'-0"

AURORA CORPORATE CENTER
DEVELOPMENT COMPANY
2228 FERRY ROAD
NAPERVILLE, ILLINOIS

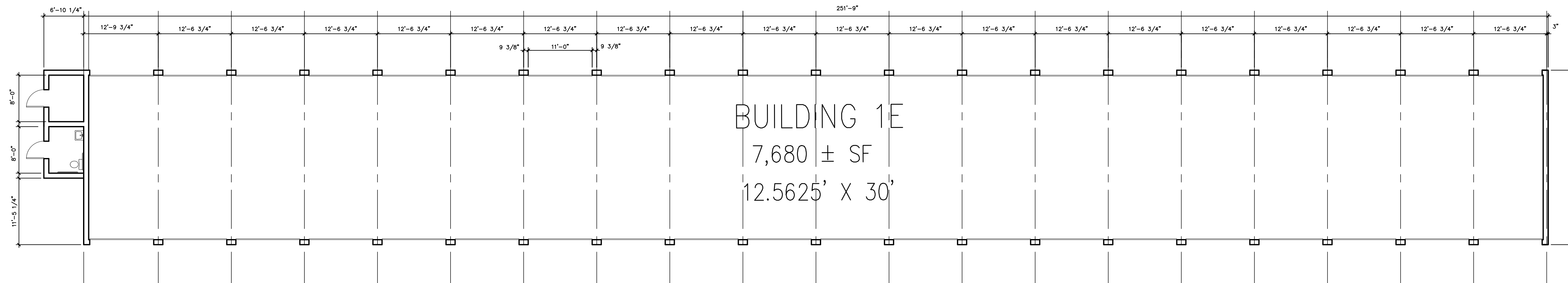
IRONGATE
MOTOR PARK
FERRY RD.
NAPERVILLE, ILLINOIS

STEVEN W. HANSEN
ARCHITECT
880 LONGVIEW CT
SUGAR GROVE, IL
630.466.8021 - 60554

#	DATE	DESCRIPTION
7	01-30-2024	CITY OF NAPERVILLE COMMENTS 2
8	2-04-2024	PLAN APPROVAL
3	9-25-2023	PRELIMINARY ELEVATION 1E SCHEME 7.1
4	9-26-2023	PRELIMINARY ELEVATION 1E
5	10-17-2023	PRELIMINARY ELEVATION 1E
6	11-28-2023	PRELIMINARY ELEVATION 1E

PROJECT NO. 23-STOR

ELEVATION
1E



1 FLOOR PLAN
 1E
 SCALE : 3/32"=1'-0"

AURORA CORPORATE CENTER
 DEVELOPMENT COMPANY
 2228 FERRY ROAD
 NAPERVILLE, ILLINOIS

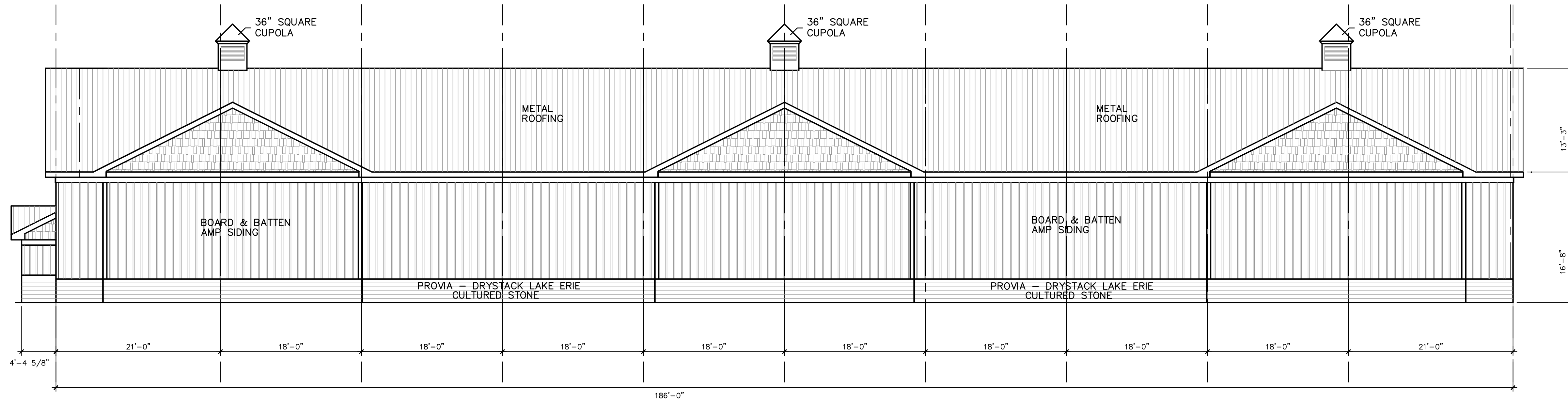
IRON GATE
 MOTOR PARK
 FERRY RD.
 NAPERVILLE, ILLINOIS

STEVEN W. HANSEN
 ARCHITECT
 880 LONGVIEW CT
 SUGAR GROVE, IL
 630.466.8021 - 60594

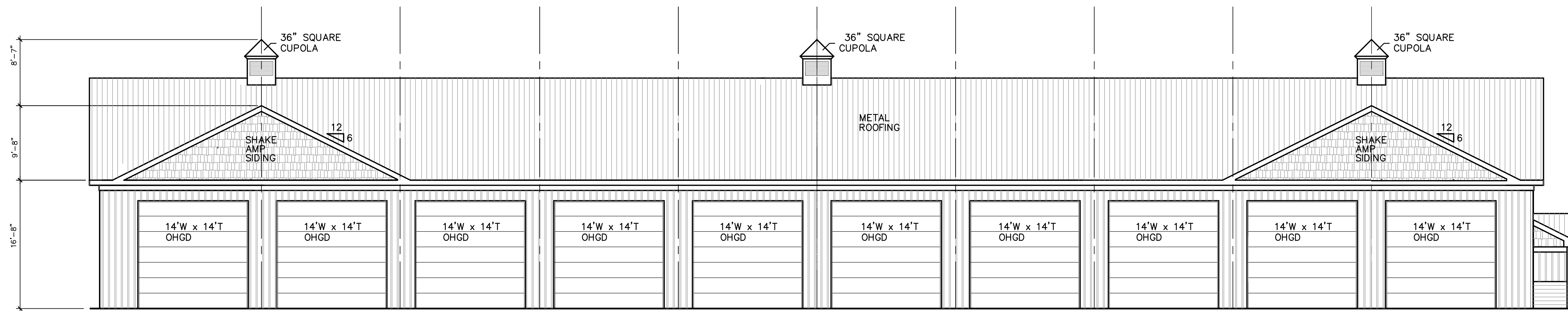
#	DATE	DESCRIPTION
1	01-31-2024	FLOOR PLAN REVIEW
2	02-04-2024	PLAN COMMISSION

PROJECT NO. 23-STOR

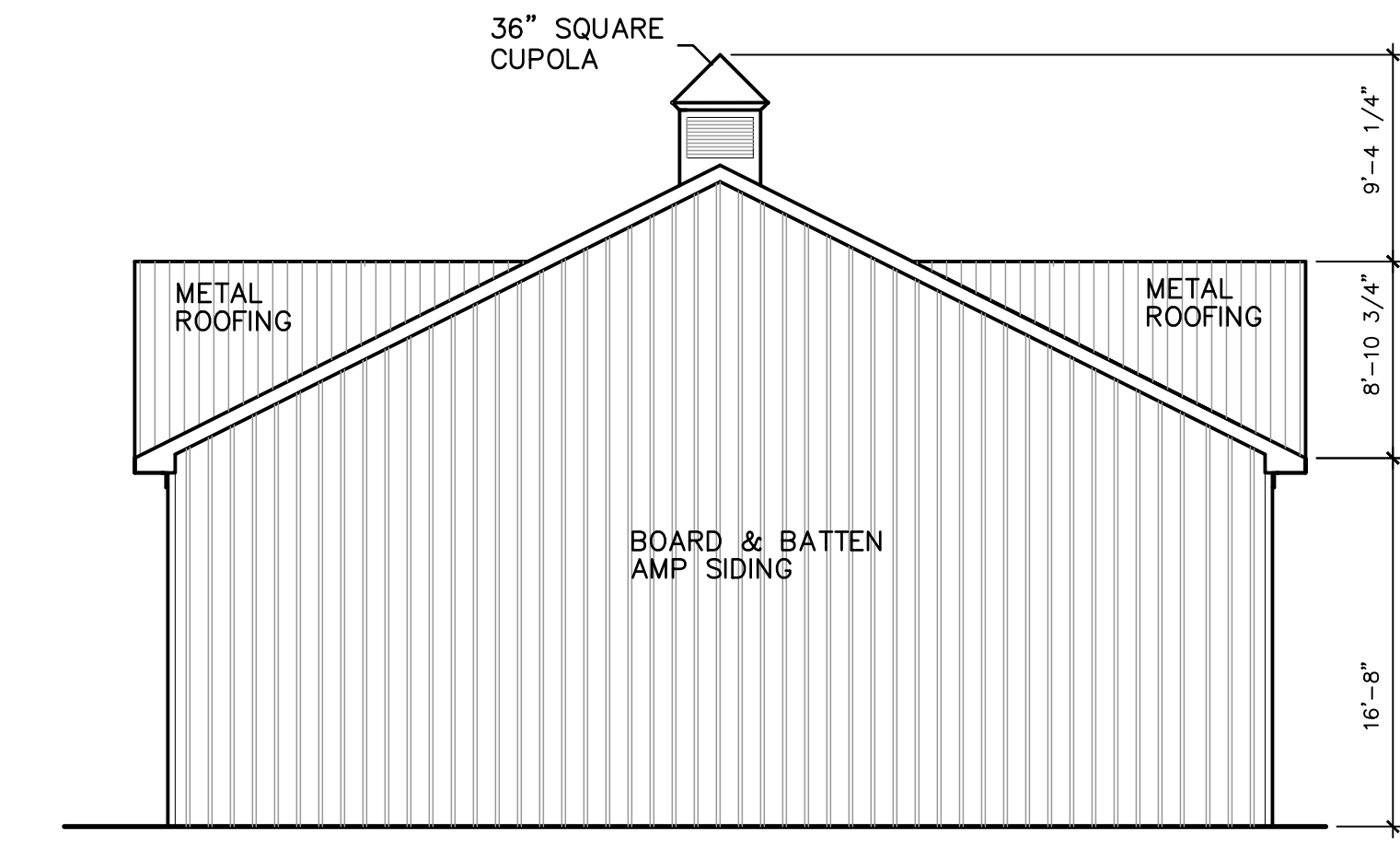
FLOORPLAN
 1E



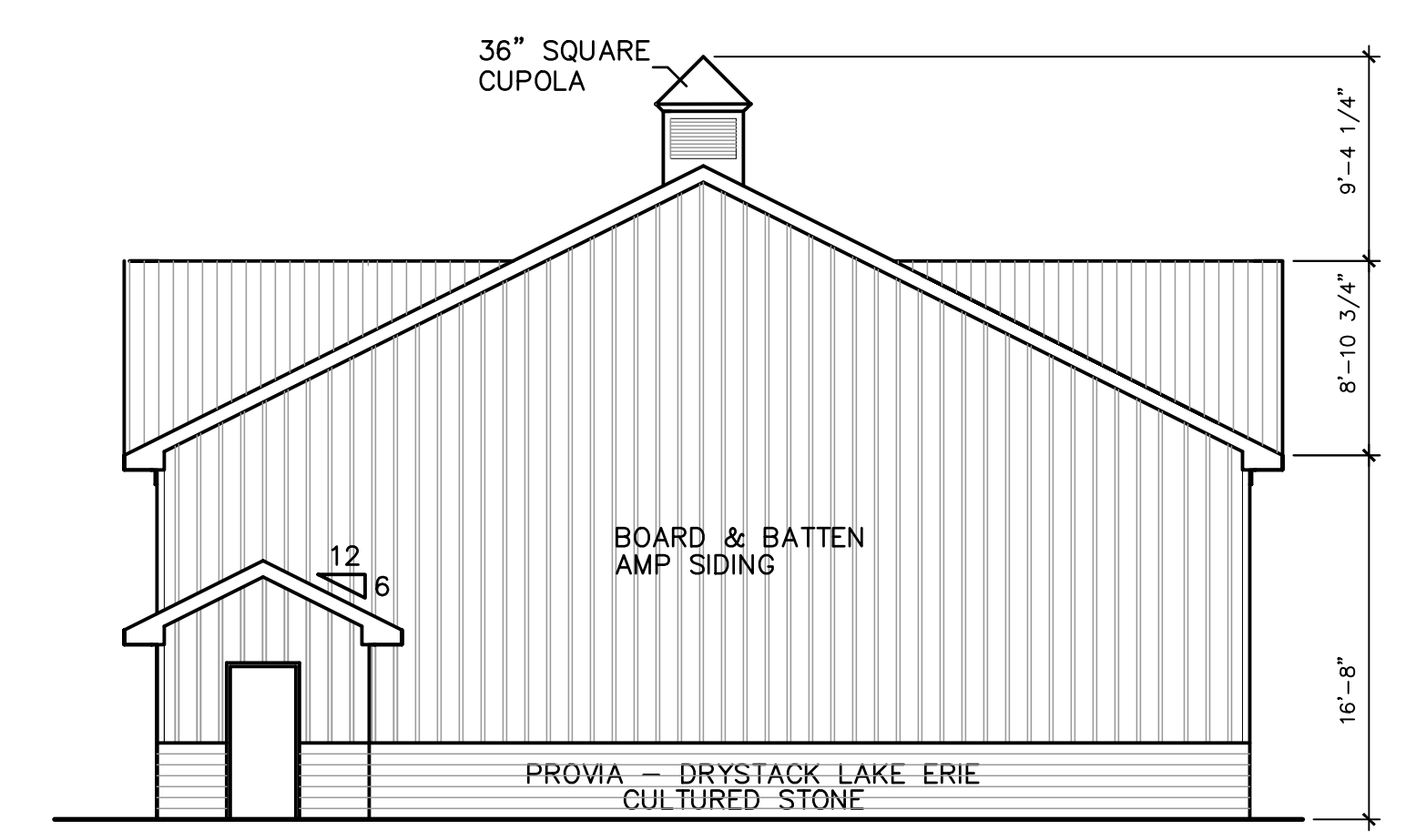
1 PRELIMINARY NORTH ELEVATION SCHEME 1W
 1W SCALE : 1/8"=1'-0"



2 PRELIMINARY SOUTH ELEVATION SCHEME 1W
 1W SCALE : 1/8"=1'-0"



4 WEST ELEVATION SCHEME 1W
 1W SCALE : 1/8"=1'-0"



3 EAST ELEVATION SCHEME 1W
 1W SCALE : 1/8"=1'-0"

AURORA CORPORATE CENTER
 DEVELOPMENT COMPANY
 2228 FERRY ROAD
 NAPERVILLE, ILLINOIS

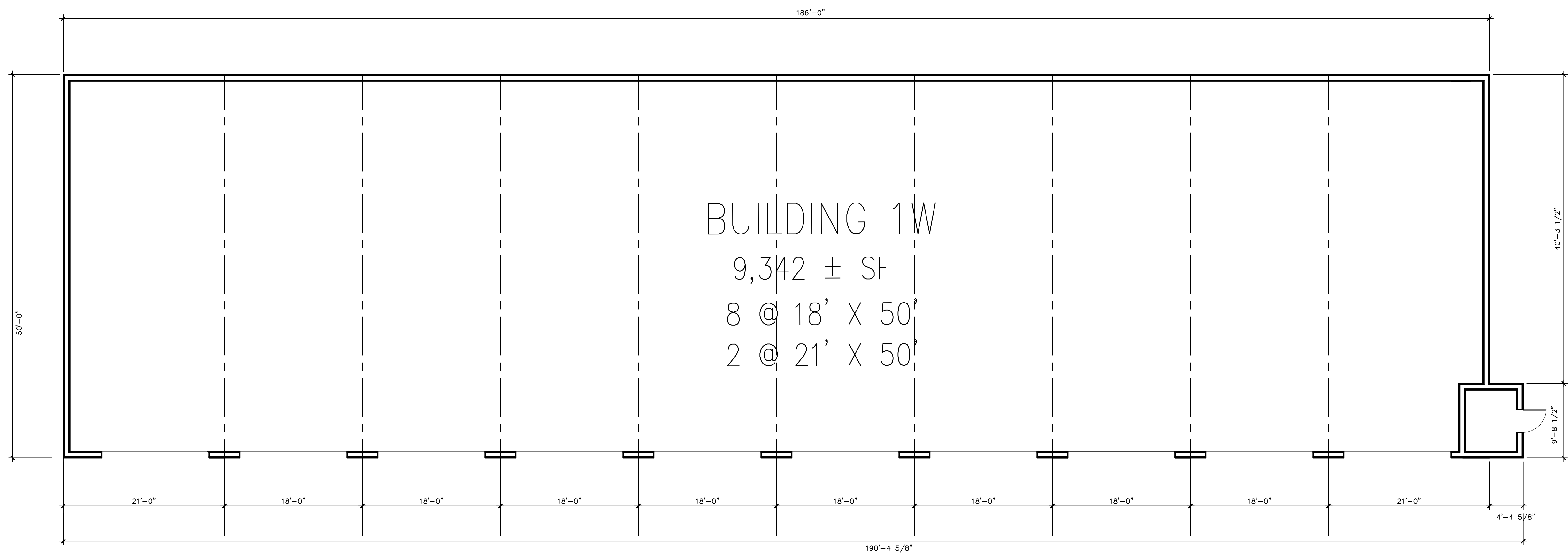
IRON GATE
 MOTOR PARK
 FERRY RD.
 NAPERVILLE, ILLINOIS

STEVEN W. HANSEN
 ARCHITECT
 880 LONGVIEW CT.
 SUGAR GROVE, IL
 630.466.8021 - 60594

#	DATE	DESCRIPTION
1	10-19-2023	PRELIMINARY ELEVATION 1W
2	01-22-2024	PRELIMINARY ELEVATION 1W
3	01-23-2024	PRELIMINARY ELEVATION 1W
4	01-24-2024	PRELIMINARY ELEVATION 1W
5	02-04-2024	PLAN COMMISSION

PROJECT NO. 23-STOR

ELEVATION
 1W



BUILDING 1W
 9,342 ± SF
 8 @ 18' X 50'
 2 @ 21' X 50'

1
1W

FLOORPLAN 1W

SCALE : 1/8"=1'-0"

AURORA CORPORATE CENTER
 DEVELOPMENT COMPANY
 2228 FERRY ROAD
 NAPERVILLE, ILLINOIS

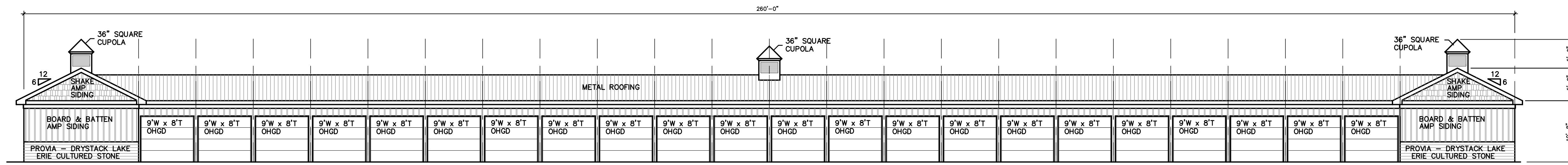
IRON GATE
 MOTOR PARK
 FERRY RD.
 NAPERVILLE, ILLINOIS

STEVEN W. HANSEN
 ARCHITECT
 880 LONGVIEW CT.
 SUGAR GROVE, IL.
 630.466.8021 - 60554

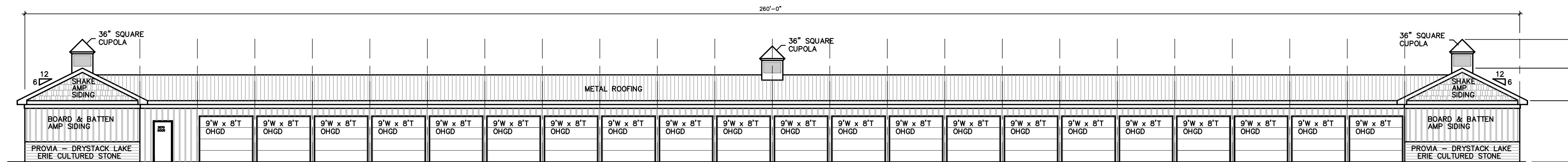
#	DATE	DESCRIPTION
1	02-04-2024	PLAN COMMISSION

PROJECT NO. 23-STOR

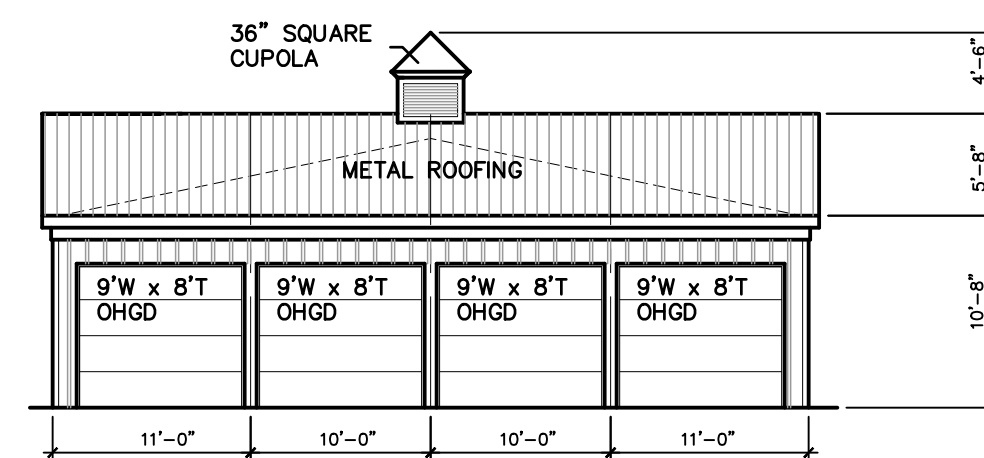
FLOOR PLAN
 1W



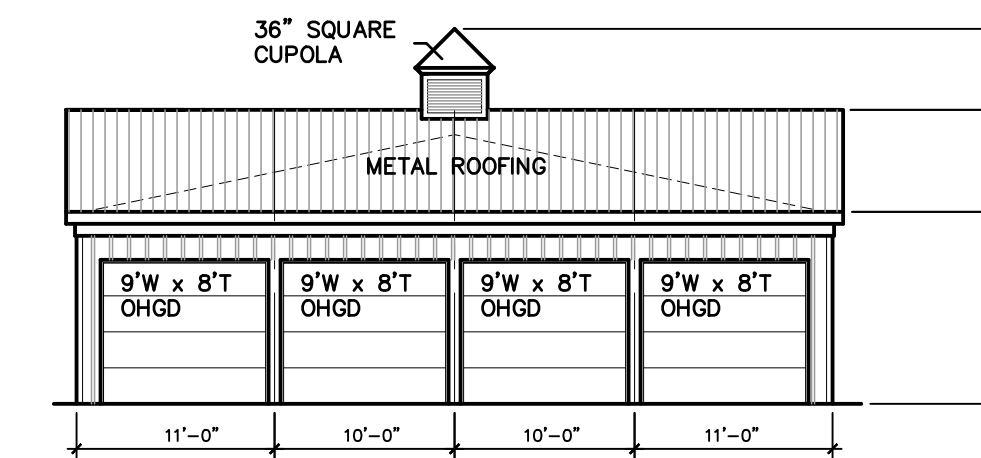
1 NORTH ELEVATION SCHEME 2E
SCALE: 3/32"=1'-0"



2 SOUTH ELEVATION SCHEME 2E
SCALE: 3/32"=1'-0"



4 WEST ELEVATION SCHEME 2E
SCALE: 3/32"=1'-0"



3 EAST ELEVATION SCHEME 2E
SCALE: 3/32"=1'-0"

AURORA CORPORATE CENTER
DEVELOPMENT COMPANY
2228 FERRY ROAD
NAPERVILLE, ILLINOIS

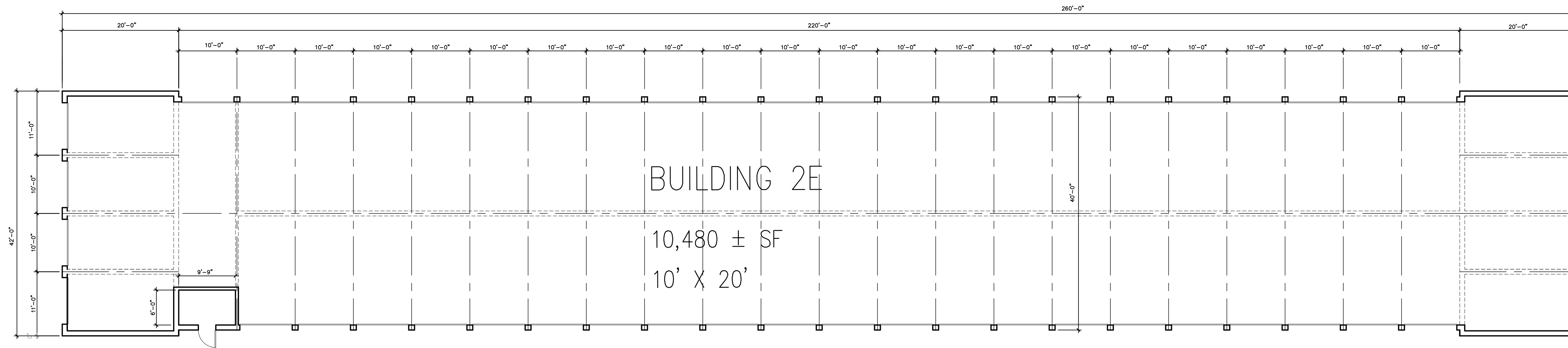
IRON GATE
MOTOR PARK
FERRY RD.
NAPERVILLE, ILLINOIS

STEVEN W. HANSEN
ARCHITECT
880 LONGVIEW CT.
SUGAR GROVE, IL
630.466.8021 - 60554

#	DATE	DESCRIPTION
7	11-28-2023	3 CUPOLAS
8	11-31-2023	NAPERVILLE REVIEW #2 COMMENTS
9	02-04-2024	PLAN COMMISSION
4	9-26-2023	PRELIMINARY ELEVATION 2E
5	10-17-2023	PRELIMINARY ELEVATION 2E
6	10-19-2023	PRELIMINARY ELEVATION 2E

PROJECT NO. 23-STOR

ELEVATION
2E



1 FLOOR PLAN
2E
SCALE : 3/32"=1'-0"

AURORA CORPORATE CENTER
DEVELOPMENT COMPANY
2228 FERRY ROAD
NAPERVILLE, ILLINOIS

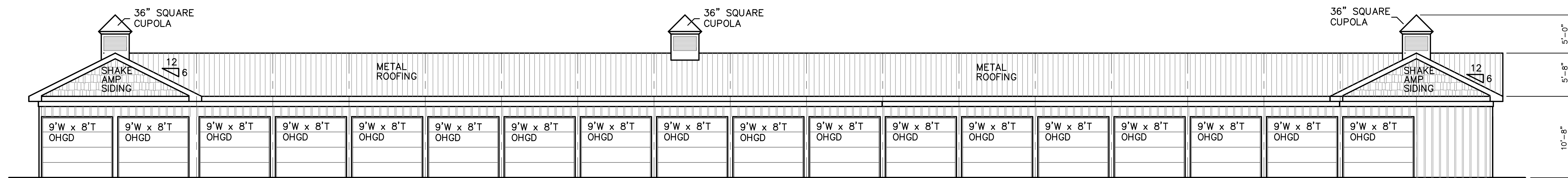
IRON GATE
MOTOR PARK
FERRY RD.
NAPERVILLE, ILLINOIS

STEVEN W. HANSEN
ARCHITECT
880 LONGVIEW CT
SUGAR GROVE, IL
630.466.8021 - 60554

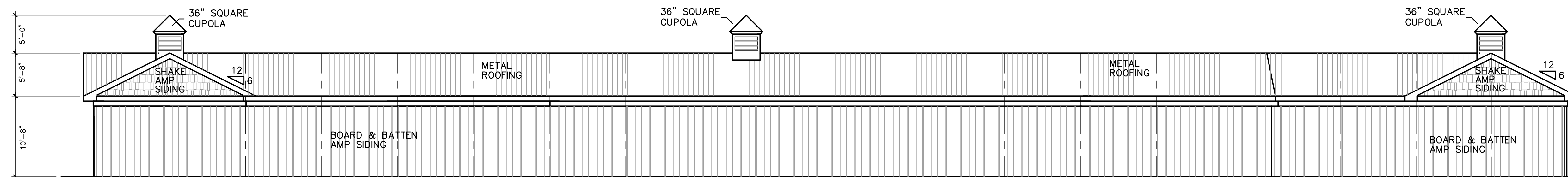
#	DATE	DESCRIPTION
1	01-31-2024	FLOOR PLAN REVIEW
2	02-04-2024	PLAN COMMISSION

PROJECT NO. 23-STOR

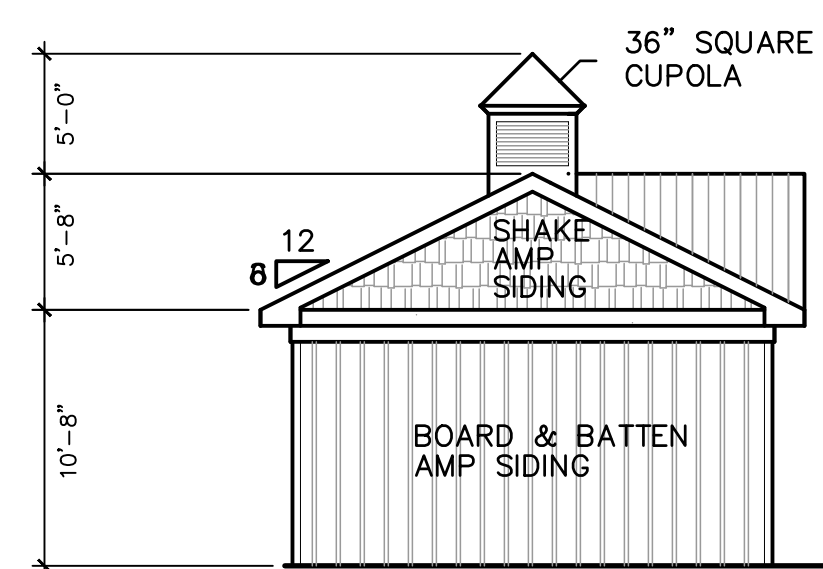
FLOORPLAN
2E



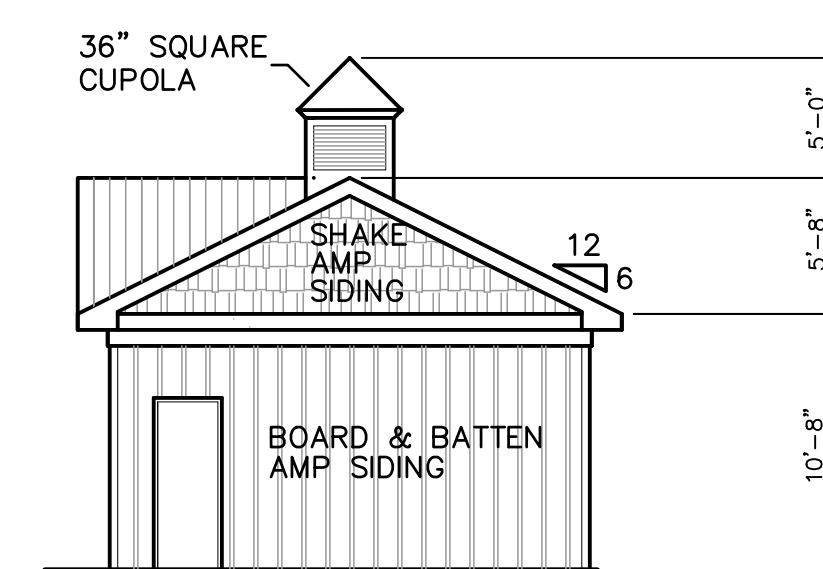
1 EAST ELEVATION SCHEME 2W
SCALE : 1/8"=1'-0"



2 WEST ELEVATION SCHEME 2W
SCALE : 1/8"=1'-0"



4 SOUTH ELEVATION SCHEME 2W
SCALE : 1/8"=1'-0"



3 NORTH ELEVATION SCHEME 2W
SCALE : 1/8"=1'-0"

AURORA CORPORATE CENTER
DEVELOPMENT COMPANY
2228 FERRY ROAD
NAPERVILLE, ILLINOIS

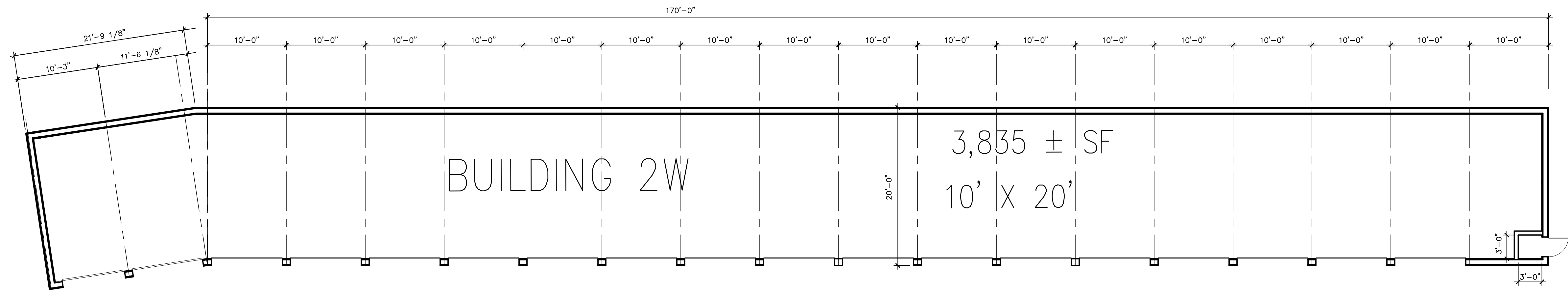
IRON GATE
MOTOR PARK
FERRY RD.
NAPERVILLE, ILLINOIS

STEVEN W. HANSEN
ARCHITECT
880 LONGVIEW CT.
SUGAR GROVE, IL
630.466.8021 - 60594

#	DATE	DESCRIPTION
7	02-04-2024	PLAN COMMISSION
2	02-08-2024	PLAN COMMISSION
3	9-25-2023	PRELIMINARY ELEVATION 2E SCHEME 7.1
4	9-26-2023	PRELIMINARY ELEVATION 2E
5	10-17-2023	PRELIMINARY ELEVATION 2E
6	10-19-2023	PRELIMINARY ELEVATION 2E

PROJECT NO. 23-STOR

ELEVATION
2W



1 FLOOR PLAN - 2W

SCALE : 1/8"=1'-0"

AURORA CORPORATE CENTER
DEVELOPMENT COMPANY
2228 FERRY ROAD
NAPERVILLE, ILLINOIS

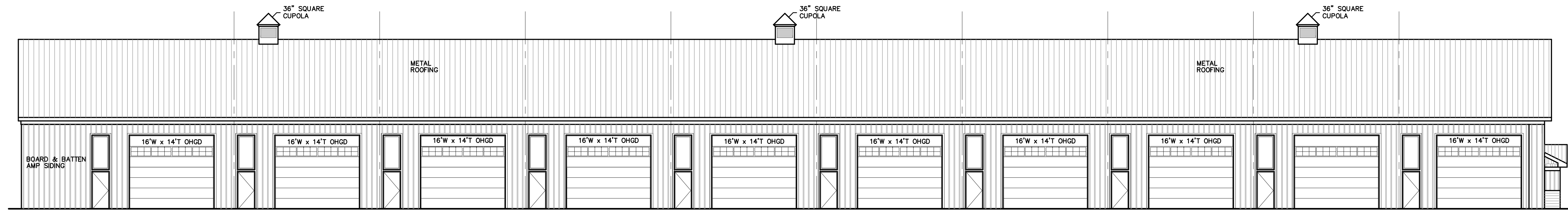
IRON GATE
MOTOR PARK
FERRY RD.
NAPERVILLE, ILLINOIS

STEVEN W. HANSEN
ARCHITECT
880 LONGVIEW CT.
SUGAR GROVE, IL.
630.466.8021 - 60554

#	DATE	DESCRIPTION
1	02-04-2024	PLAN COMMISSION
2	02-08-2024	PLAN COMMISSION

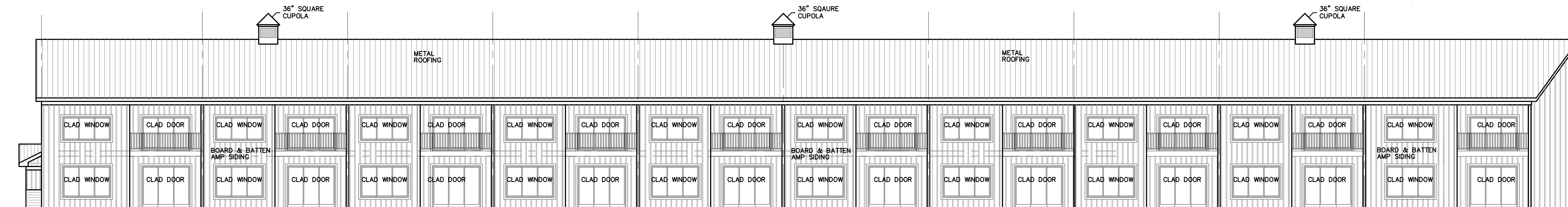
PROJECT NO. 23-STOR

PLAN
2W



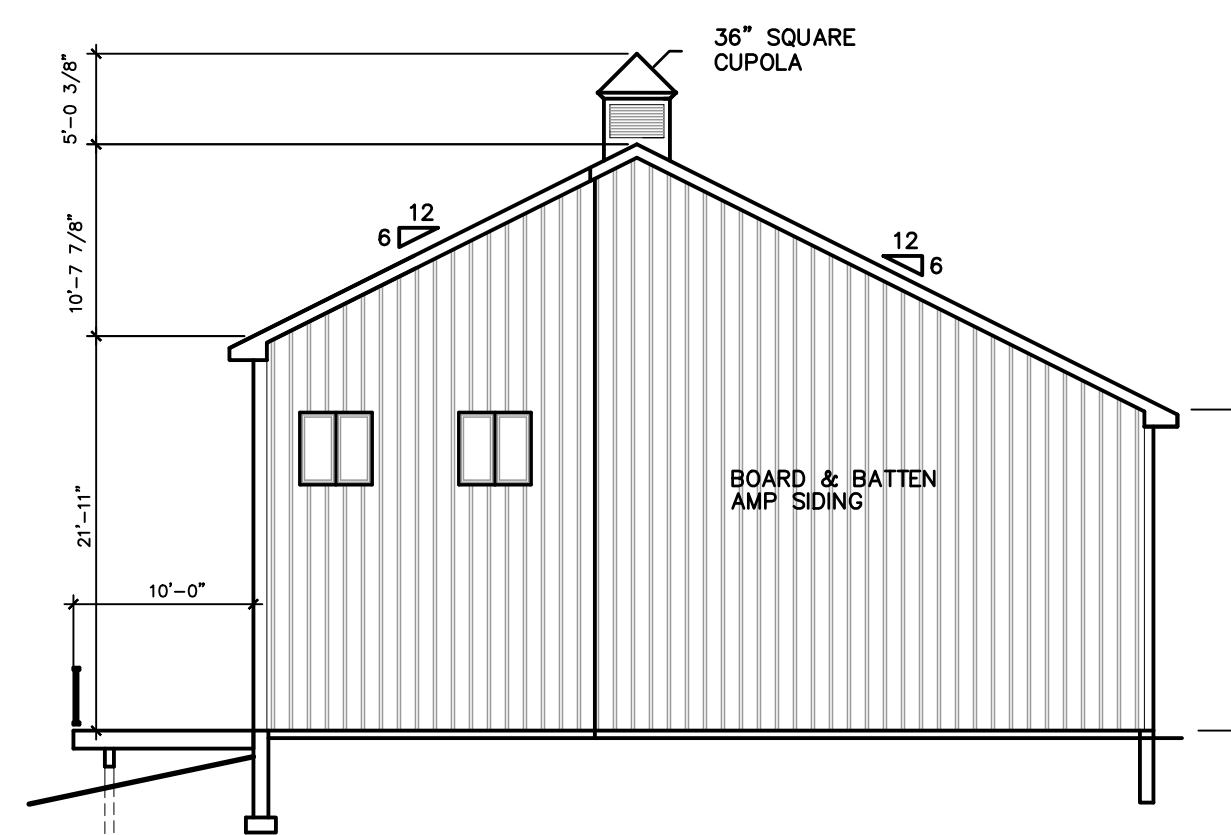
1 NORTH ELEVATION SCHEME 3E

SCALE: 3/32"=1'-0"



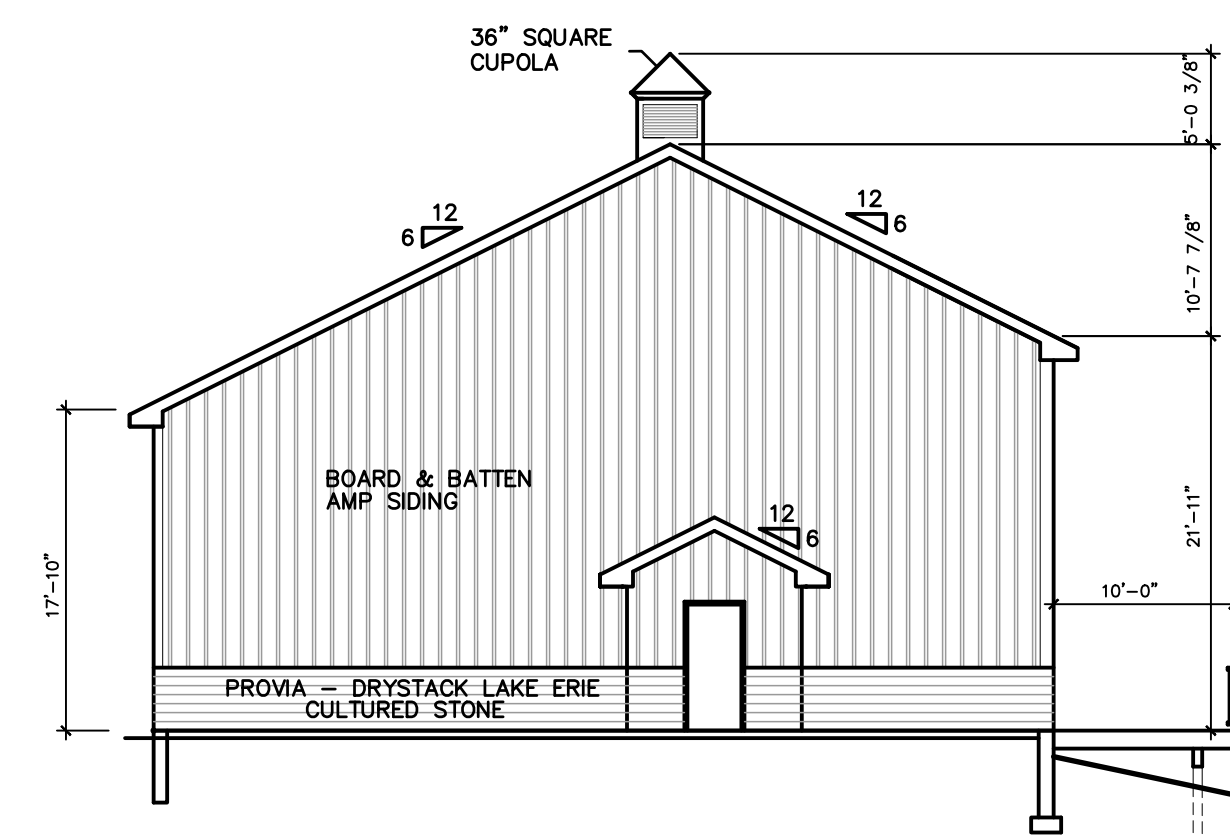
2 SOUTH ELEVATION SCHEME

SCALE: 3/32"=1'-0"



4 EAST ELEVATION SCHEME 3E

SCALE: 3/32"=1'-0"



3 WEST ELEVATION SCHEME 3E

SCALE: 3/32"=1'-0"

AURORA CORPORATE CENTER
DEVELOPMENT COMPANY
2228 FERRY ROAD
NAPERVILLE, ILLINOIS

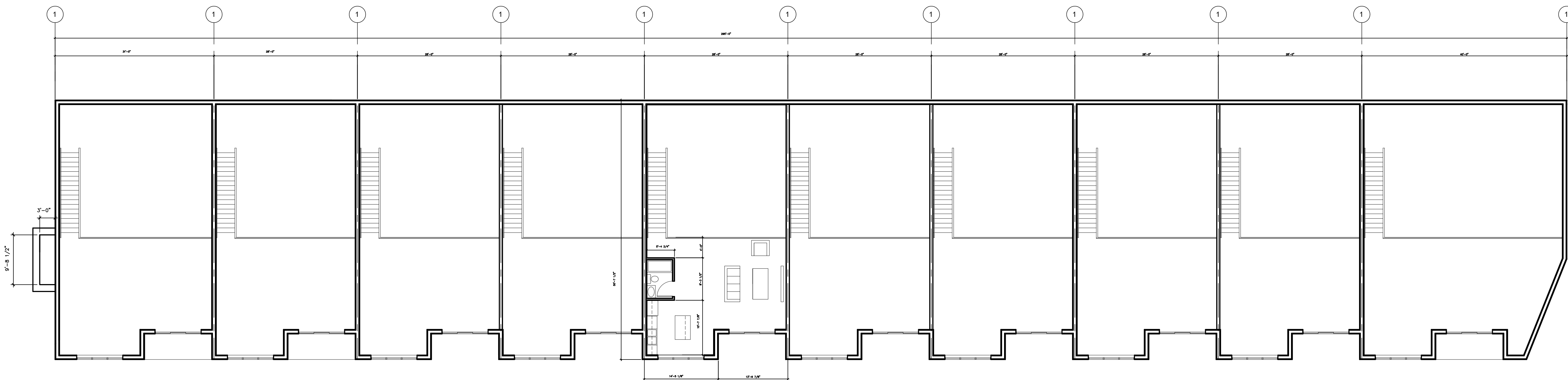
IRON GATE
MOTOR PARK
FERRY RD.
NAPERVILLE, ILLINOIS

STEVEN W. HANSEN
ARCHITECT
880 Langview ct
SUGAR GROVE, IL
630.466.8021 - 60594

#	DATE	DESCRIPTION
7	10-30-2023	ADDED SOUTH ELEVATION
8	02-04-2024	PLAN COMMISSION
3	9-25-2023	PRELIMINARY ELEVATIONS 3E - REVISION #2
4	9-26-2023	PRELIMINARY ELEVATIONS 3E - REVISION #3
5	10-19-2023	PRELIMINARY ELEVATIONS 3E - REVISION #5
6	10-19-2023	PRELIMINARY ELEVATIONS 3E - 28' UNITS

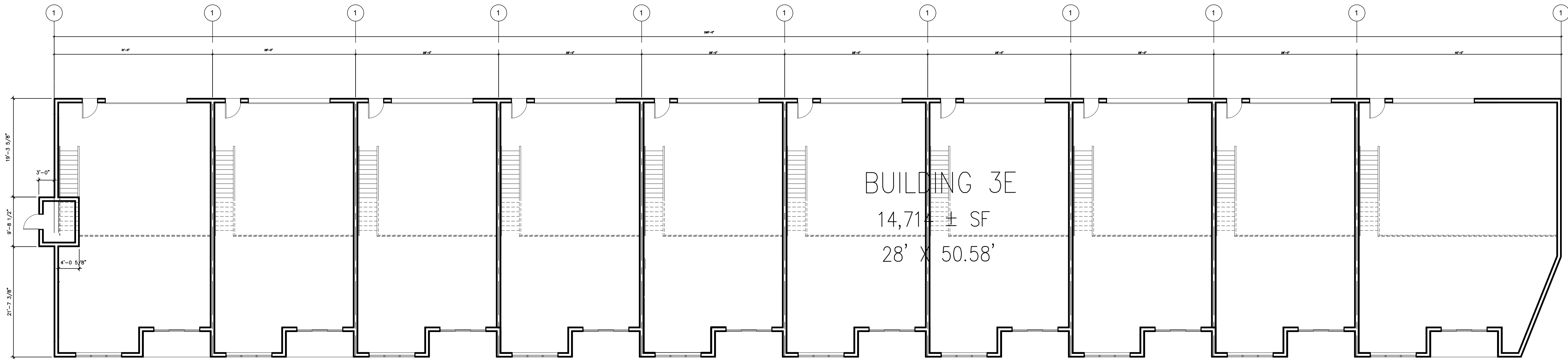
PROJECT NO. 23-STOR

ELEVATION
3E



2 2 ND. FLOOR PLAN - 3E

SCALE: 3/32"=1'-0"



1 1 ST. FLOOR PLAN - 3E

SCALE: 3/32"=1'-0"

AURORA CORPORATE CENTER
DEVELOPMENT COMPANY
2228 FERRY ROAD
NAPERVILLE, ILLINOIS

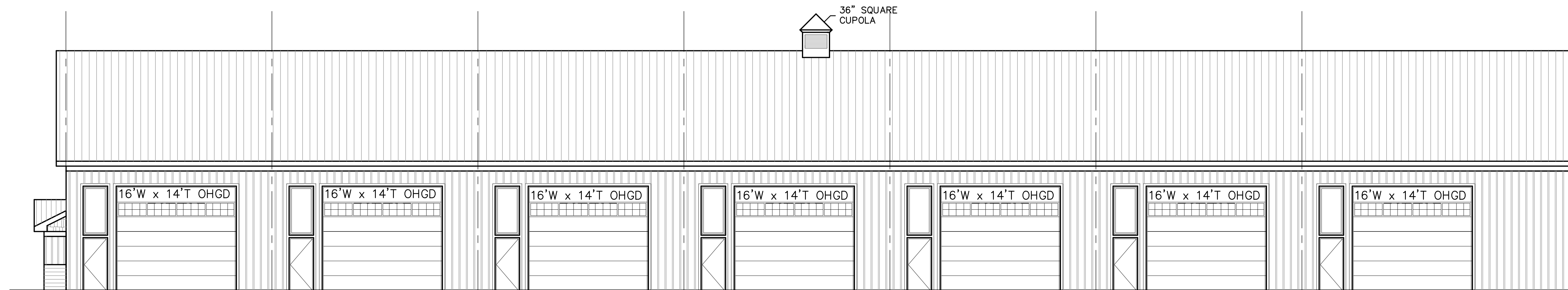
IRON GATE
MOTOR PARK
FERRY RD.
NAPERVILLE, ILLINOIS

STEVEN W. HANSEN
ARCHITECT
880 Longview ct
SUGAR GROVE, IL
630.466.8021 - 60554

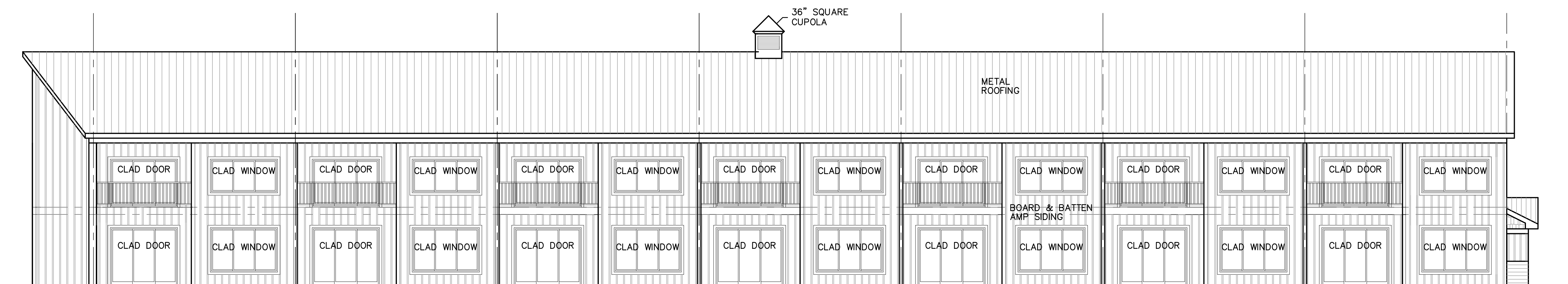
#	DATE	DESCRIPTION
1	02-04-2024	PLAN COMMISSION

PROJECT NO. 23-STOR

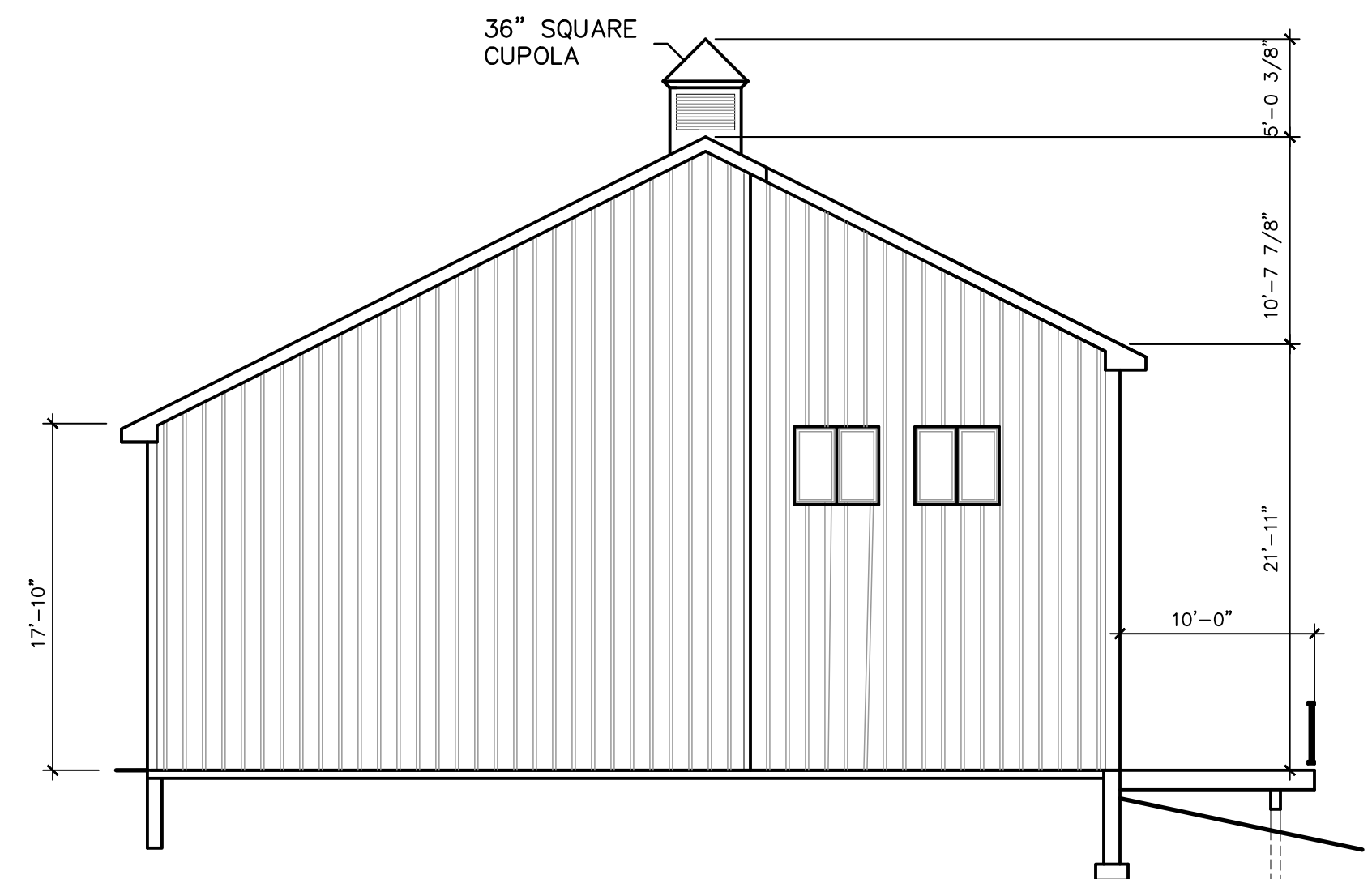
FLOOR PLAN
3E



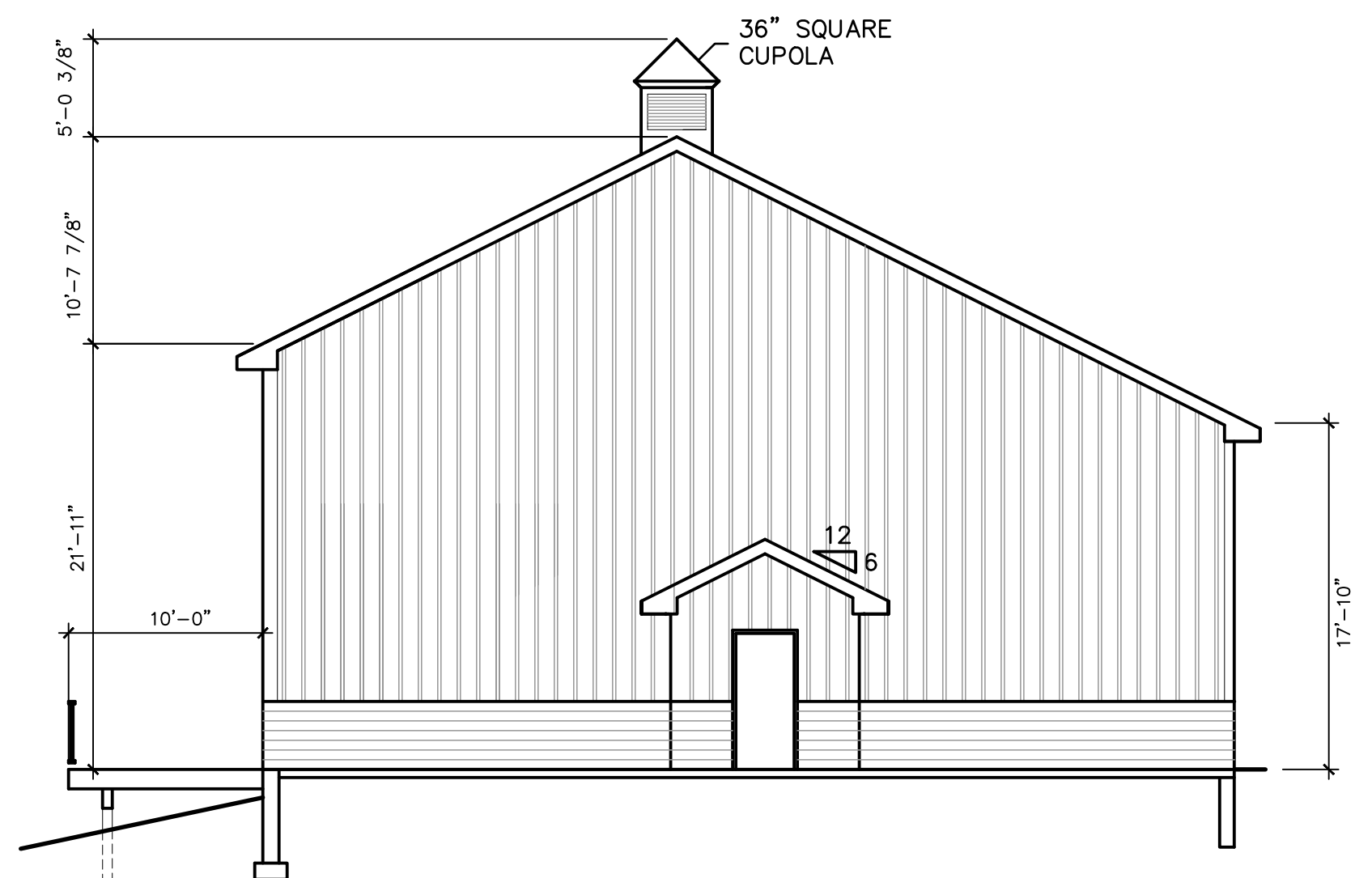
1 NORTH ELEVATION SCHEME 3W
SCALE : 1/8"=1'-0"



2 SOUTH ELEVATION SCHEME 3W
SCALE : 1/8"=1'-0"



4 WEST ELEVATION SCHEME 3W
SCALE : 1/8"=1'-0"



3 EAST ELEVATION SCHEME 3W
SCALE : 1/8"=1'-0"

AURORA CORPORATE CENTER
DEVELOPMENT COMPANY
2228 FERRY ROAD
NAPERVILLE, ILLINOIS

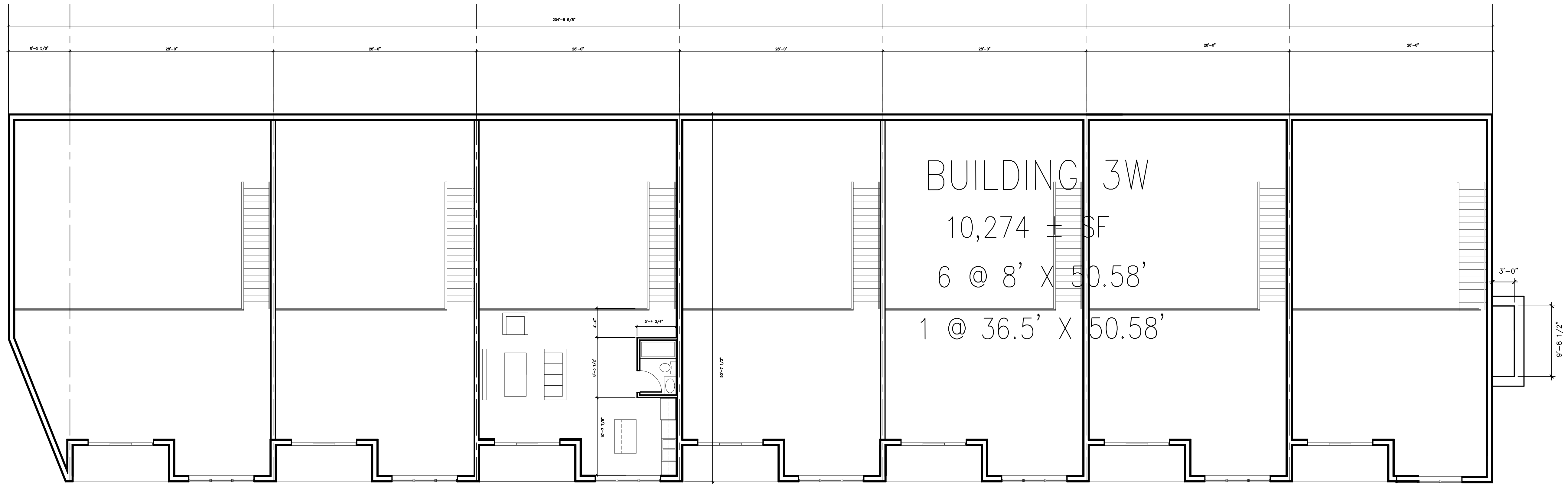
IRON GATE
MOTOR PARK
FERRY RD.
NAPERVILLE, ILLINOIS

STEVEN W. HANSEN
ARCHITECT
880 LONGVIEW CT.
SUGAR GROVE, IL
630.466.8021 - 60594

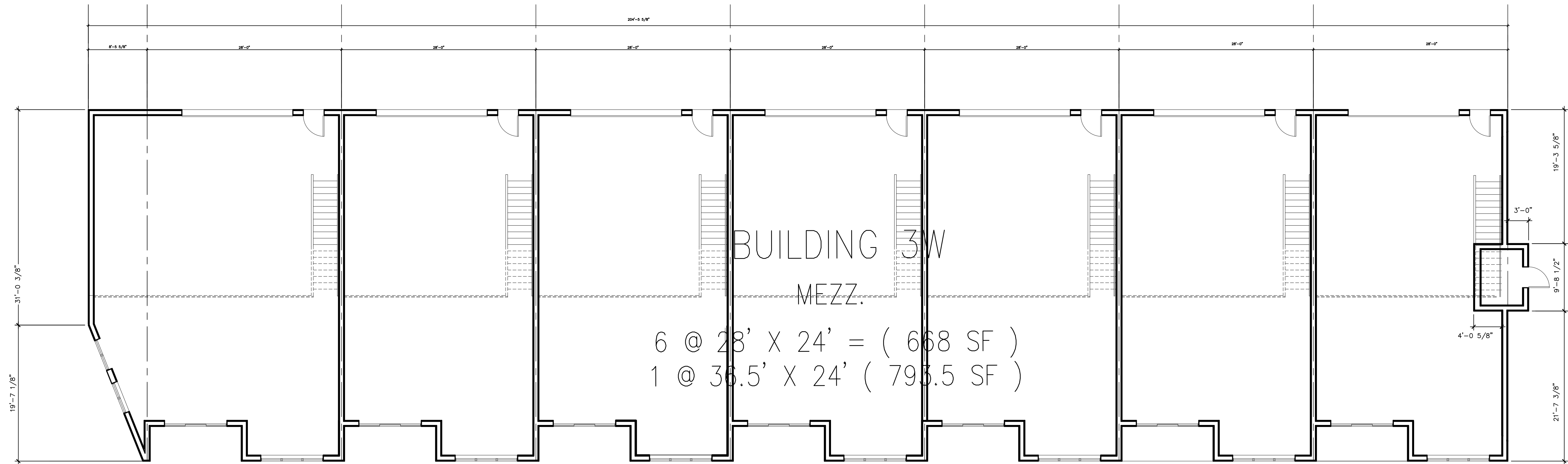
#	DATE	DESCRIPTION
1	10-19-2023	PRELIMINARY ELEVATION 3W
2	02-04-2024	PLAN COMMISSION
3	02-08-2024	PLAN COMMISSION

PROJECT NO. 23-STOR

ELEVATION
3W



1 2 ND. FLOOR PLAN - SCHEME 3W
 3W SCALE : 1/8"=1'-0"



2 1 ST. FLOOR PLAN - SCHEME 3W
 3W SCALE : 1/8"=1'-0"

AURORA CORPORATE CENTER
 DEVELOPMENT COMPANY
 2228 FERRY ROAD
 NAPERVILLE, ILLINOIS

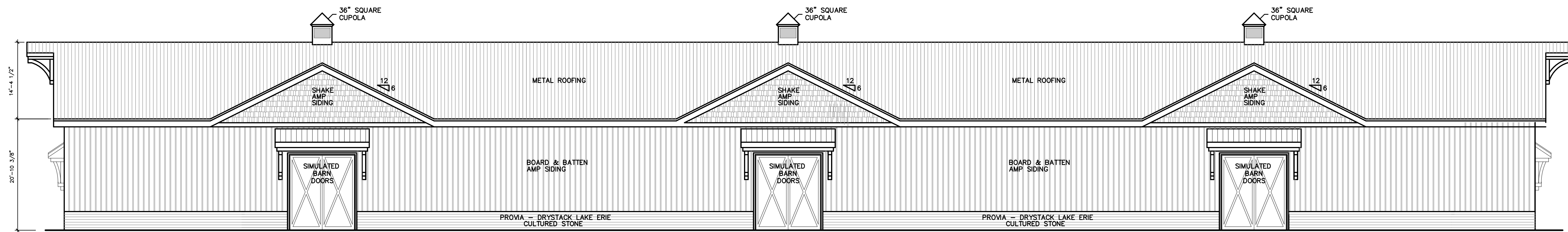
IRON GATE
 MOTOR PARK
 FERRY RD.
 NAPERVILLE, ILLINOIS

STEVEN W. HANSEN
 ARCHITECT
 880 LONGVIEW CT.
 SUGAR GROVE, IL
 630.486.8021 - 60554

#	DATE	DESCRIPTION
1	10-19-2023	PRELIMINARY ELEVATION 3W
2	02-04-2024	PLAN COMMISSION
3	02-08-2024	PLAN COMMISSION

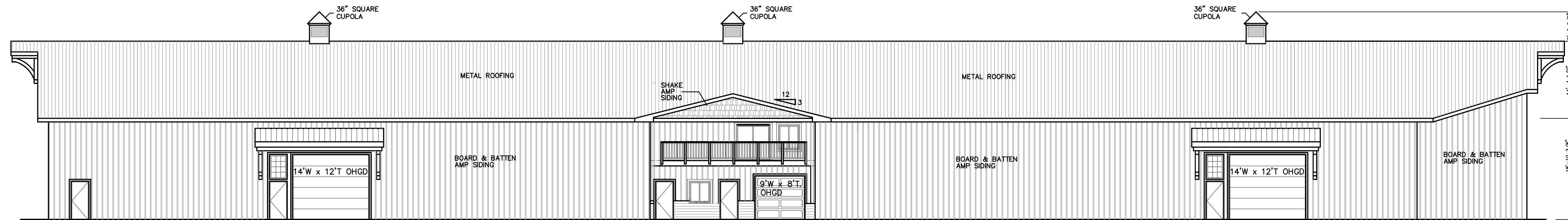
PROJECT NO. 23-STOR

FLOOR PLAN
 3W



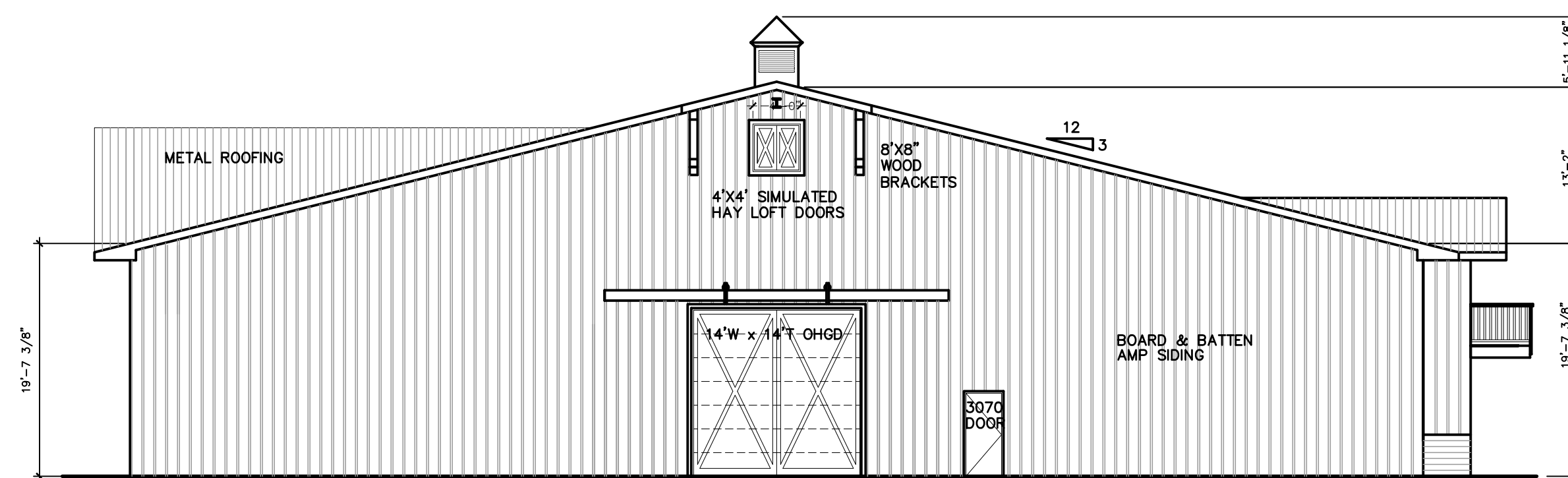
1 NORTH ELEVATION SCHEME 4E

SCALE : 3/32"=0"



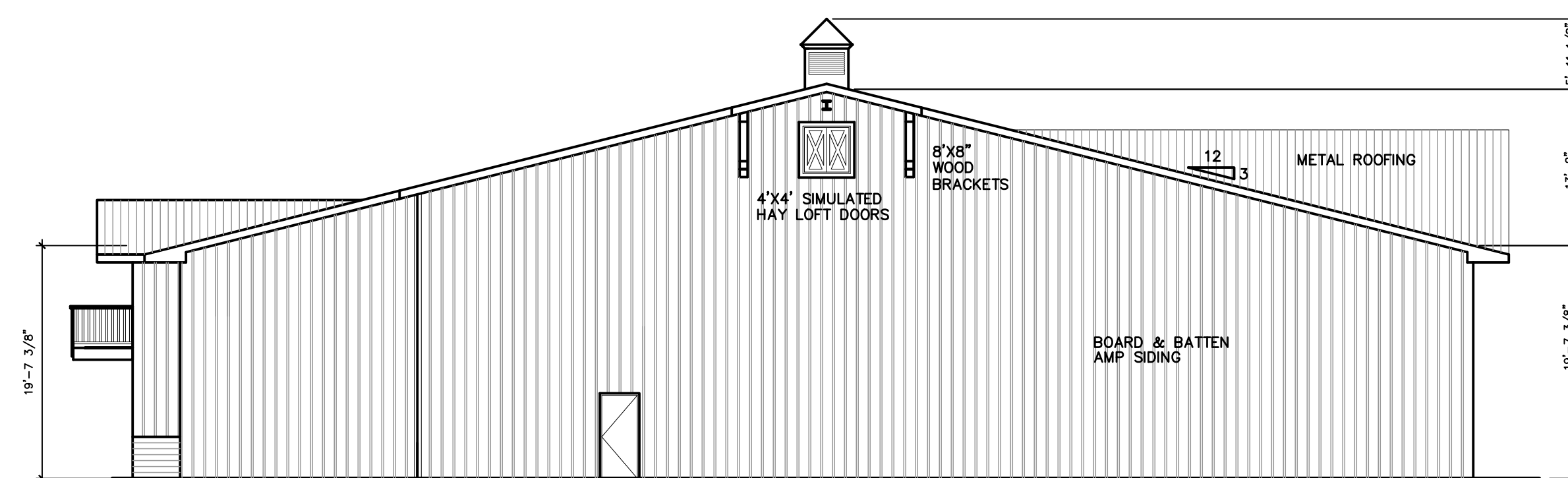
2 SOUTH ELEVATION SCHEME 4E

SCALE : 3/32"=0"



4 WEST ELEVATION SCHEME

SCALE: 3/32"=1'-0"



3 EAST ELEVATION SCHEME 4E

SCALE: 3/32"=1'-0"

AURORA CORPORATE CENTER
DEVELOPMENT COMPANY
2228 FERRY ROAD
NAPERVILLE, ILLINOIS

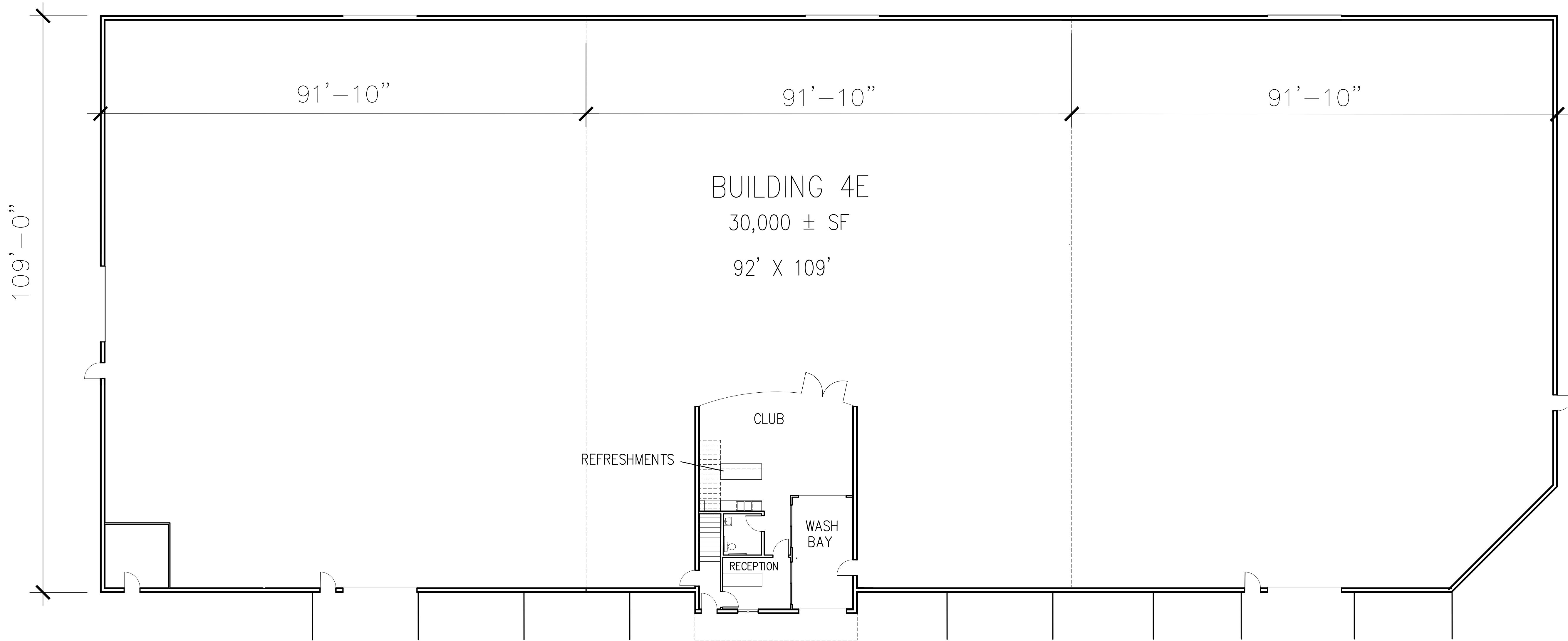
IRONGATE MOTOR PARK
FERRY RD.
NAPERVILLE, ILLINOIS

STEVEN W. HANSEN
ARCHITECT
880 LONGVIEW CT
SUGAR GROVE, IL
630.466.8021 - 60594

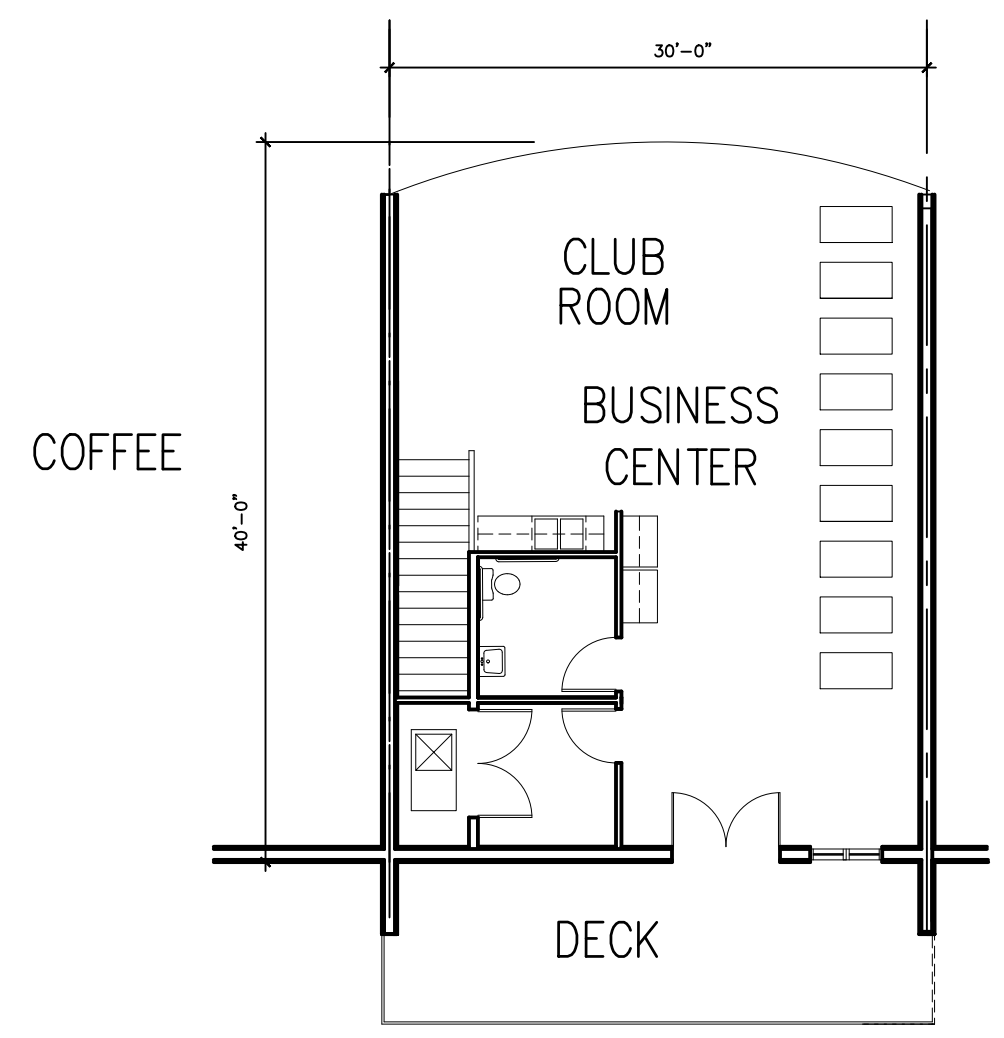
#	DATE	DESCRIPTION
1	9-26-2023	PRELIMINARY ELEVATIONS 4E
2	10-19-2023	PRELIMINARY ELEVATIONS 4E
3	01-20-2024	REVISE NORTH ELEVATION W/ GABLES
4	02-04-2024	PLAN COMMISSION

PROJECT NO. 23-STOR

ELEVATION
4E



1 FIRST FLOOR PLAN SCHEME 4E
 4E SCALE : 3/32"=0"



2 SECOND FLOOR PLAN SCHEME 4E
 4E SCALE : 3/32"=0"

AURORA CORPORATE CENTER
 DEVELOPMENT COMPANY
 2228 FERRY ROAD
 NAPERVILLE, ILLINOIS

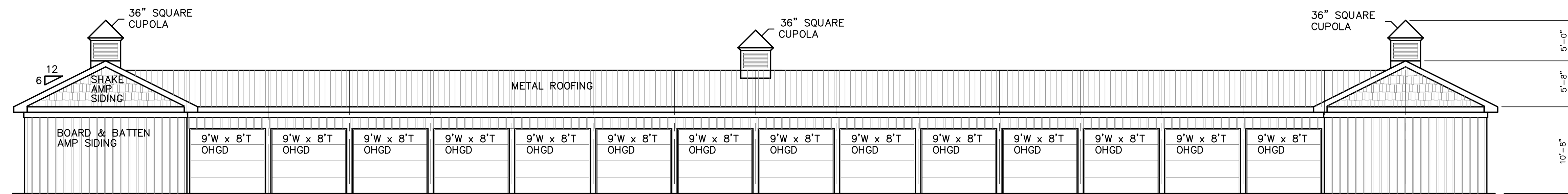
IRONGATE MOTOR PARK
 FERRY RD.
 NAPERVILLE, ILLINOIS

STEVEN W. HANSEN
 ARCHITECT
 880 LONGVIEW CT
 SUGAR GROVE, IL
 630.466.8021 - 60594

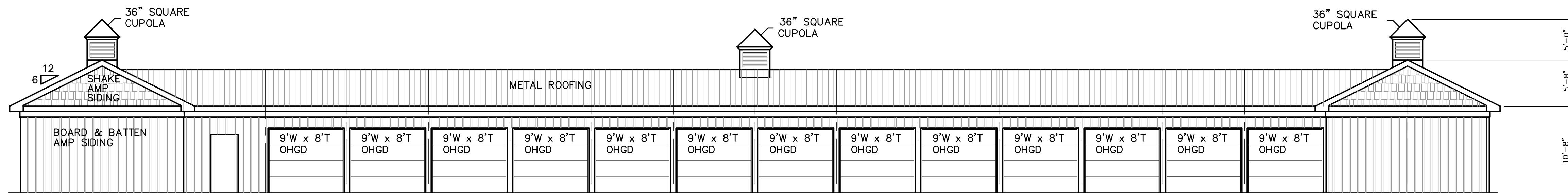
#	DATE	DESCRIPTION
1	02-04-2024	PLAN COMMISSION
1	02-08-2024	PLAN COMMISSION

PROJECT NO. 23-STOR

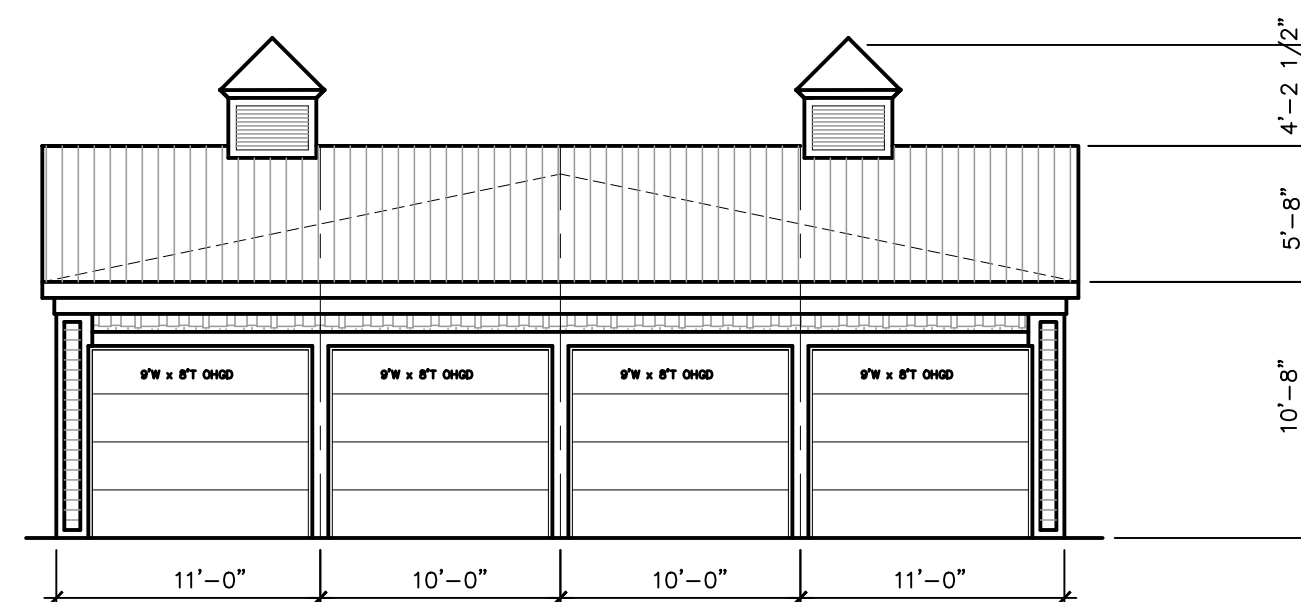
FLOOR PLAN
 4E



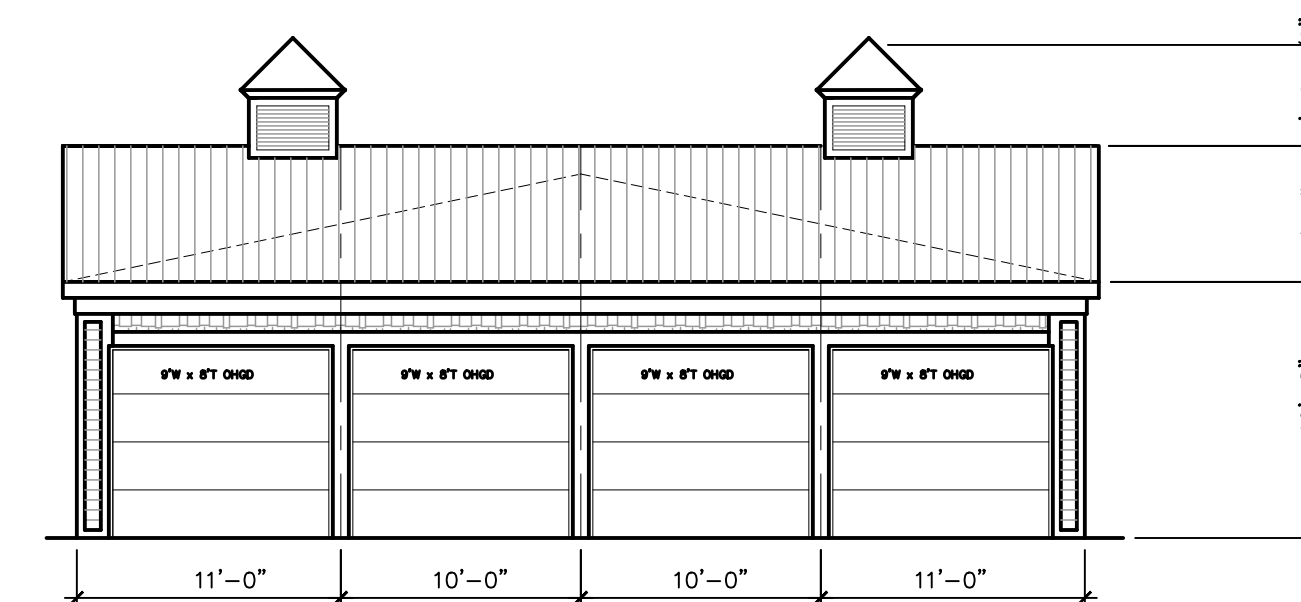
1 EAST ELEVATION SCHEME 4W
SCALE : 1/8"=1'-0"



2 WEST ELEVATION SCHEME 4W
SCALE : 1/8"=1'-0"



4 SOUTH ELEVATION SCHEME 4W
SCALE : 1/8"=1'-0"



3 NORTH ELEVATION SCHEME 4W
SCALE : 1/8"=1'-0"

AURORA CORPORATE CENTER
DEVELOPMENT COMPANY
2228 FERRY ROAD
NAPERVILLE, ILLINOIS

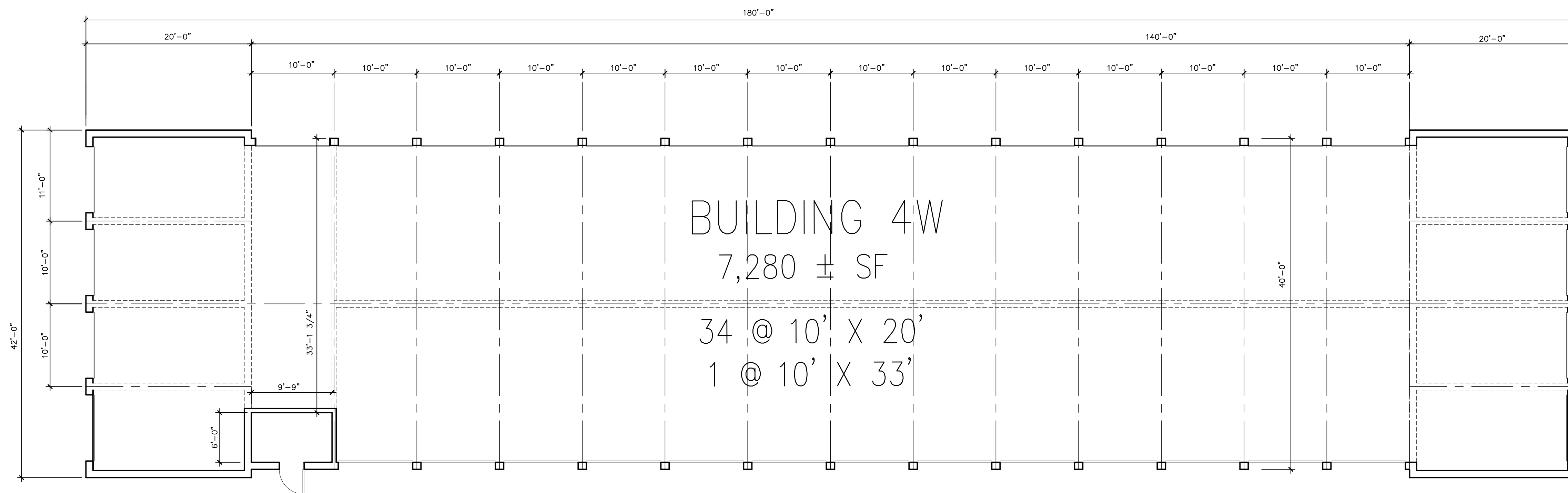
IRON GATE
MOTOR PARK
FERRY RD.
NAPERVILLE, ILLINOIS

STEVEN W. HANSEN
ARCHITECT
880 LONGVIEW CT
SUGAR GROVE, IL
630.466.8021 - 60594

#	DATE	DESCRIPTION
1	10-17-2023	PRELIMINARY ELEVATION 4W
2	9-25-2023	PRELIMINARY ELEVATION 4W
3	9-25-2023	PRELIMINARY ELEVATION 4W
4	9-25-2023	PRELIMINARY ELEVATION 4W
5	10-17-2023	PRELIMINARY ELEVATION 4W
6	10-17-2023	PRELIMINARY ELEVATION 4W
7	10-04-2024	PLAN COMMISSION
8	9-20-2023	PRELIMINARY ELEVATION 4W

PROJECT NO. 23-STOR

ELEVATION
4W



1 1 ST. FLOOR PLAN SCHEME 4W
 4W SCALE : 1/8"=1'-0"

AURORA CORPORATE CENTER
 DEVELOPMENT COMPANY
 2228 FERRY ROAD
 NAPERVILLE, ILLINOIS

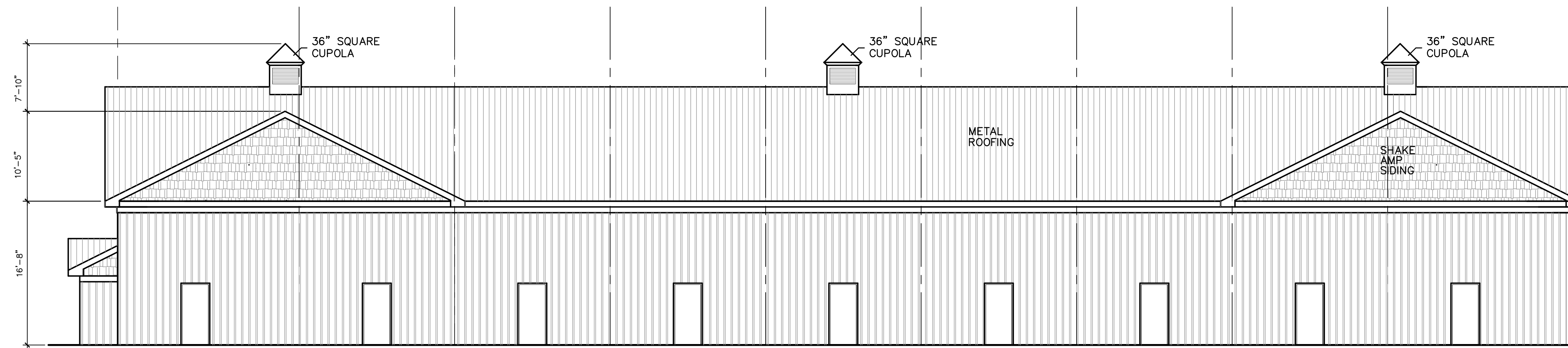
IRON GATE
 MOTOR PARK
 FERRY RD.
 NAPERVILLE, ILLINOIS

STEVEN W. HANSEN
 ARCHITECT
 880 LONGVIEW CT
 SUGAR GROVE, IL
 630.466.8021 - 60554

#	DATE	DESCRIPTION
1	02-04-2024	PLAN COMMISSION

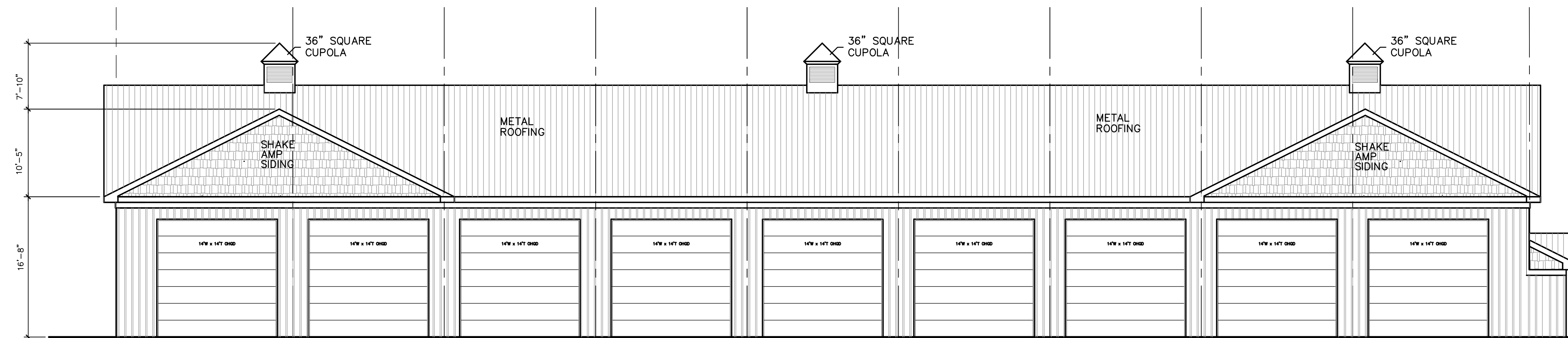
PROJECT NO. 23-STOR

FLOOR PLAN
 4W



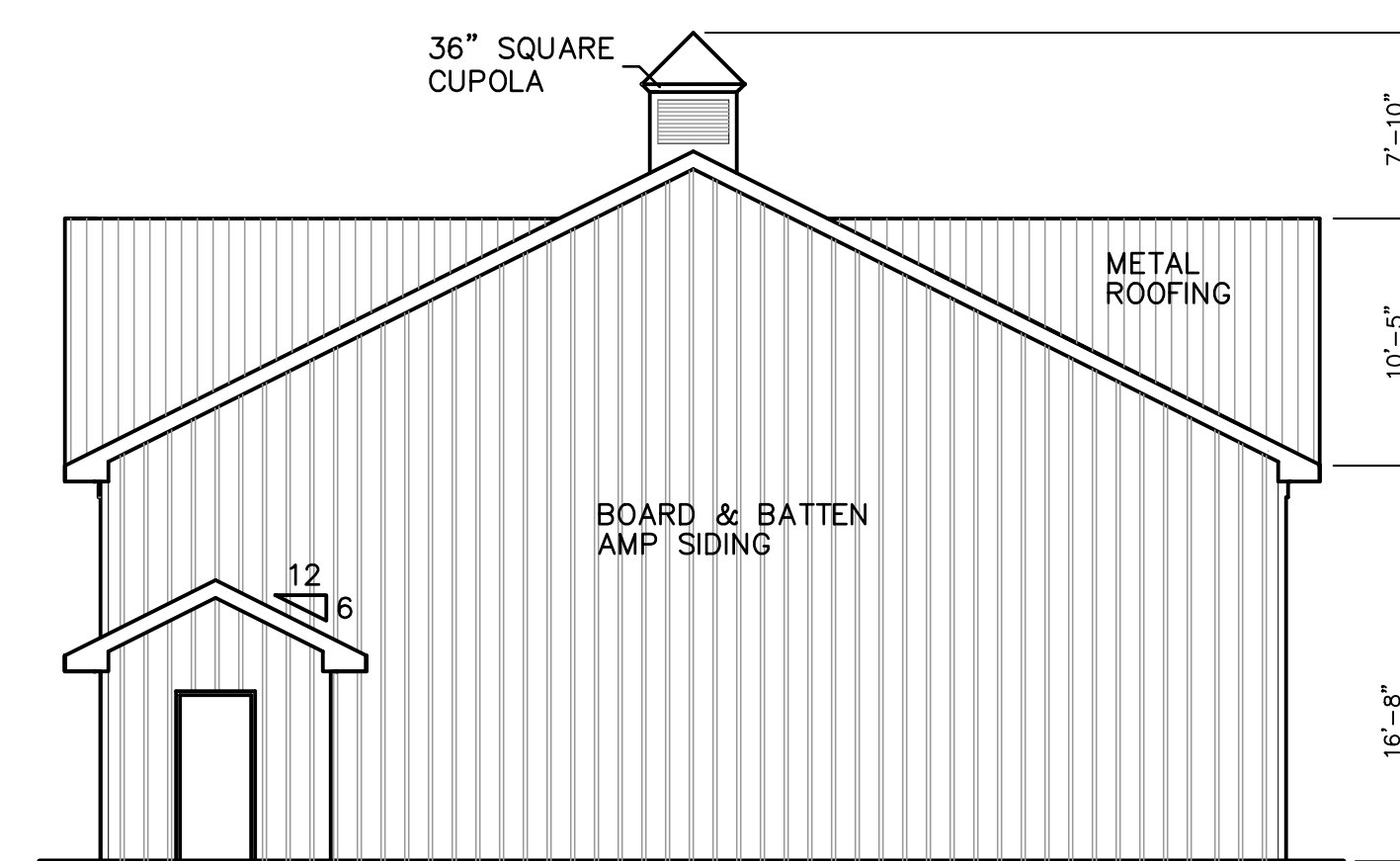
1 WEST ELEVATION SCHEME 5W

SCALE : 1/8"=1'-0"



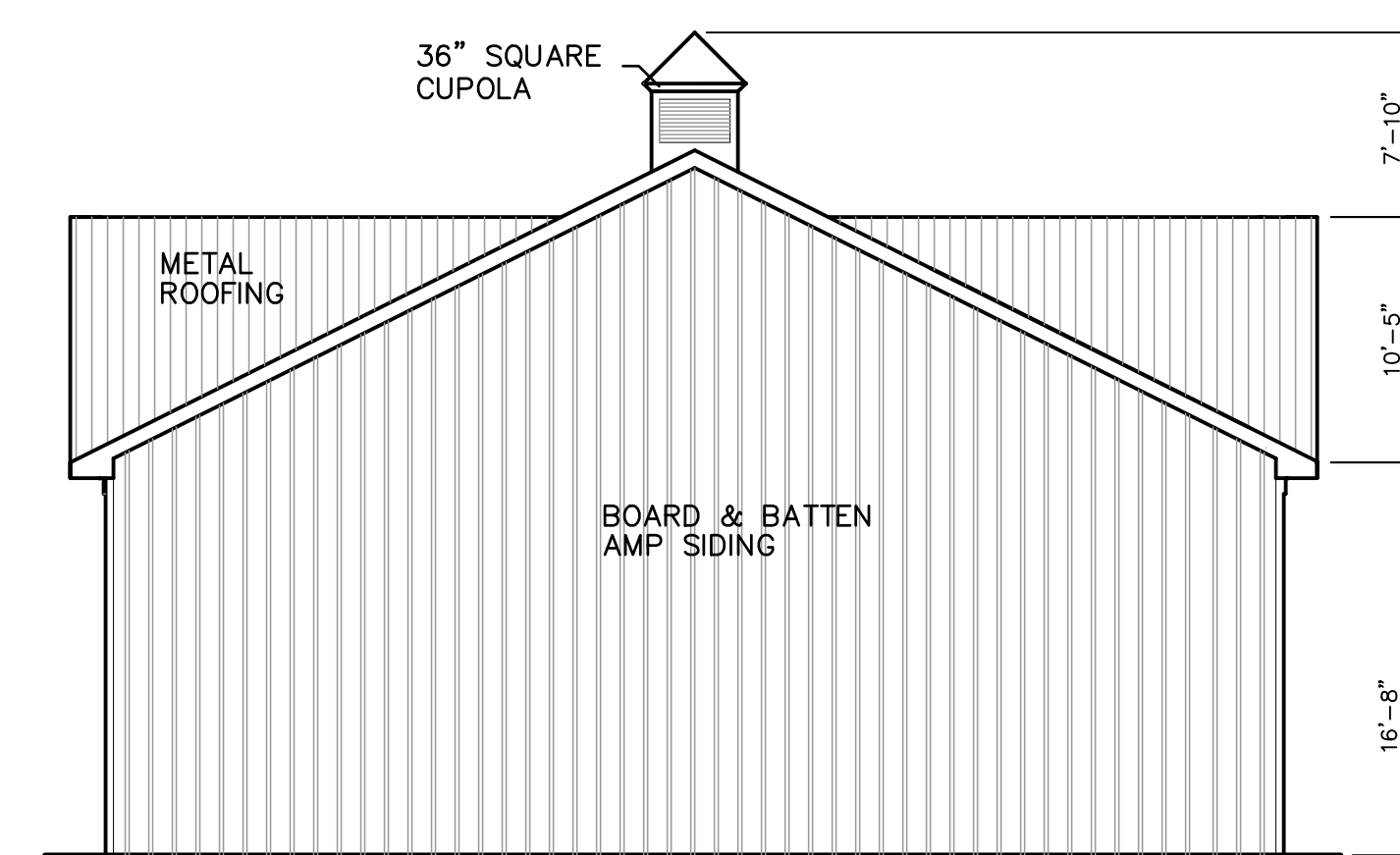
2 EAST ELEVATION SCHEME 5W

SCALE : 1/8"=1'-0"



4 NORTH ELEVATION SCHEME 5W

SCALE : 1/8"=1'-0"



3 SOUTH ELEVATION SCHEME 5W

SCALE : 1/8"=1'-0"

AURORA CORPORATE CENTER
DEVELOPMENT COMPANY
2228 FERRY ROAD
NAPERVILLE, ILLINOIS

IRON GATE
MOTOR PARK
FERRY RD.
NAPERVILLE, ILLINOIS

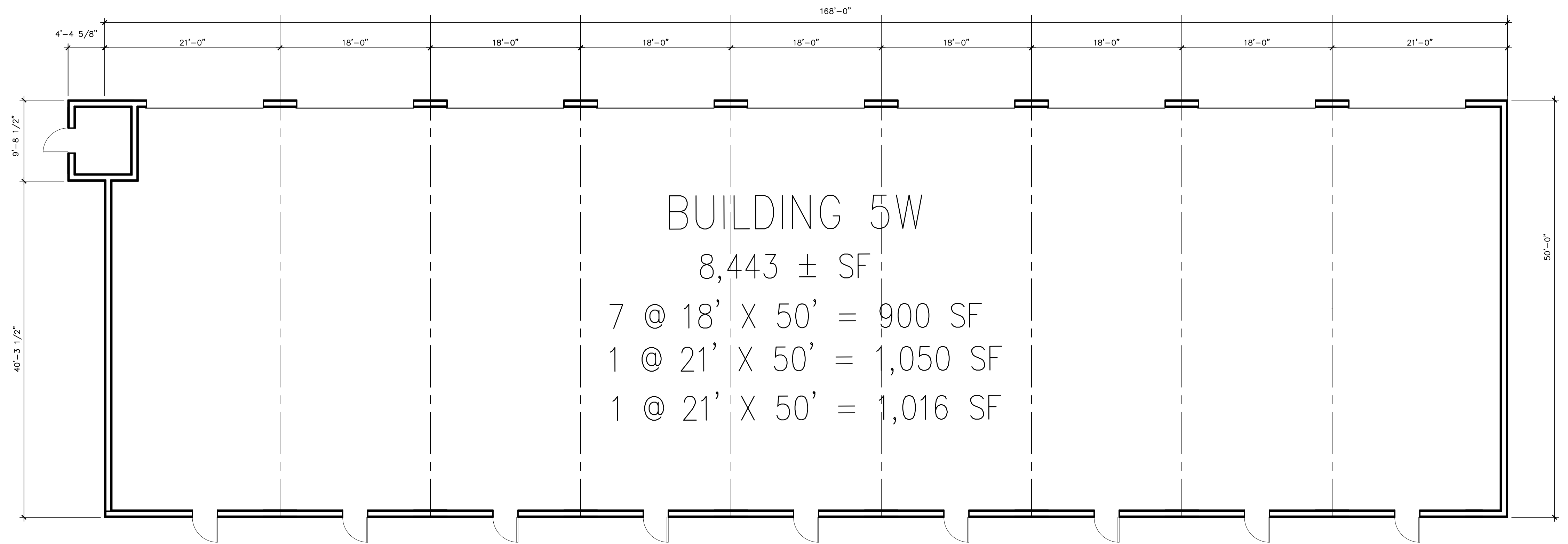
STEVEN W. HANSEN
ARCHITECT
880 LONGVIEW CT.
SUGAR GROVE, IL.
630.486.8021 - 60554

#	DATE	DESCRIPTION
1	10-17-2023	PRELIMINARY ELEVATION 5W
2	02-04-2024	PLAN COMMISSION

PROJECT NO. 23-STOR



FLOOR PLAN
5W



BUILDING 5W

8,443 ± SF

7 @ 18' X 50' = 900 SF

1 @ 21' X 50' = 1,050 SF

1 @ 21' X 50' = 1,016 SF

1 FLOOR PLAN SCHEME 5W

SCALE : 1/8"=1'-0"

AURORA CORPORATE CENTER
DEVELOPMENT COMPANY

2228 FERRY ROAD
NAPERVILLE, ILLINOIS

IRON GATE
MOTOR PARK

FERRY RD.
NAPERVILLE, ILLINOIS

STEVEN W. HANSEN
ARCHITECT

880 LONGVIEW CT.
SUGAR GROVE, IL.
630.466.8021 - 60554

#	DATE	DESCRIPTION
1	10-17-2023	PRELIMINARY ELEVATION 5W
2	02-04-2024	PLAN COMMISSION

PROJECT NO. 23-STOR

FLOOR PLAN
5W



Board & Batten

Color Selection Tool

26 GAUGE

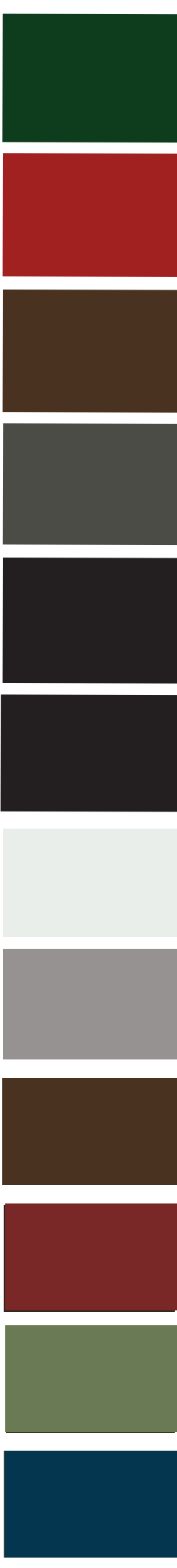


centralstatesmfg.com

Copyright © 2023, Central States Manufacturing, Inc., All Rights Reserved.
Galvalume® is a registered trademark of BIEC International, Inc.
Other colors are available for special order purchase. Please contact your salesperson for more information.
Contact your sales person for accurate pricing. Longer lead times may apply. Texture panels must be installed in the same direction. See directional arrows or stickers provided on your panels. Color variation between orders is normal and not cause for rejection. Colors on this chart are close representations of actual metal color, limited by printing and viewing conditions. Color matching is optimized for outdoor viewing.

SHERWIN-WILLIAMS.
Coil Coatings

- Basil Textured
- Roma Textured
- Sienna Textured
- Mineral Textured
- Onyx Textured
- Sumatra Textured
- Brilliant
- Gray
- Brown
- Rustic
- Colony
- Gallery



Dark Oak



Barnwood



Hickory





Rustic Red Board & Batten metal panels

Choose quality Central States metal for the best protection and a Lifetime warranty.

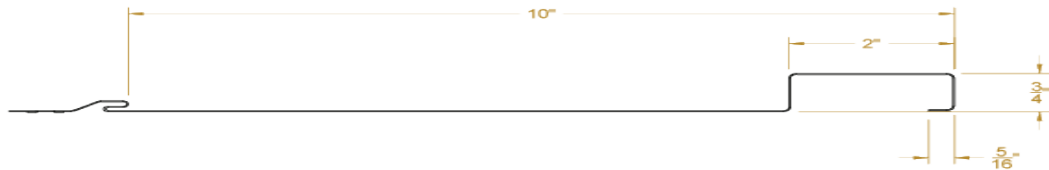
By choosing quality Central States metal you are making a purchase for the future. Our coatings recipe helps protect your investment from fading, rusting and gives excellent dent protection as well. The benefits of metal panels will also help you save money on utility bills and are environmentally friendly.

Central States woodgrain panels provide a classic, refined siding option.

Central States woodgrain panels give your home, business or project similar advantages as painted panels but with a distinct natural look. Steel Board & Batten gives both homeowners and architects the ability to choose a superior performance siding option, eliminating the need for required regular maintenance while retaining its structural and aesthetic appearance.

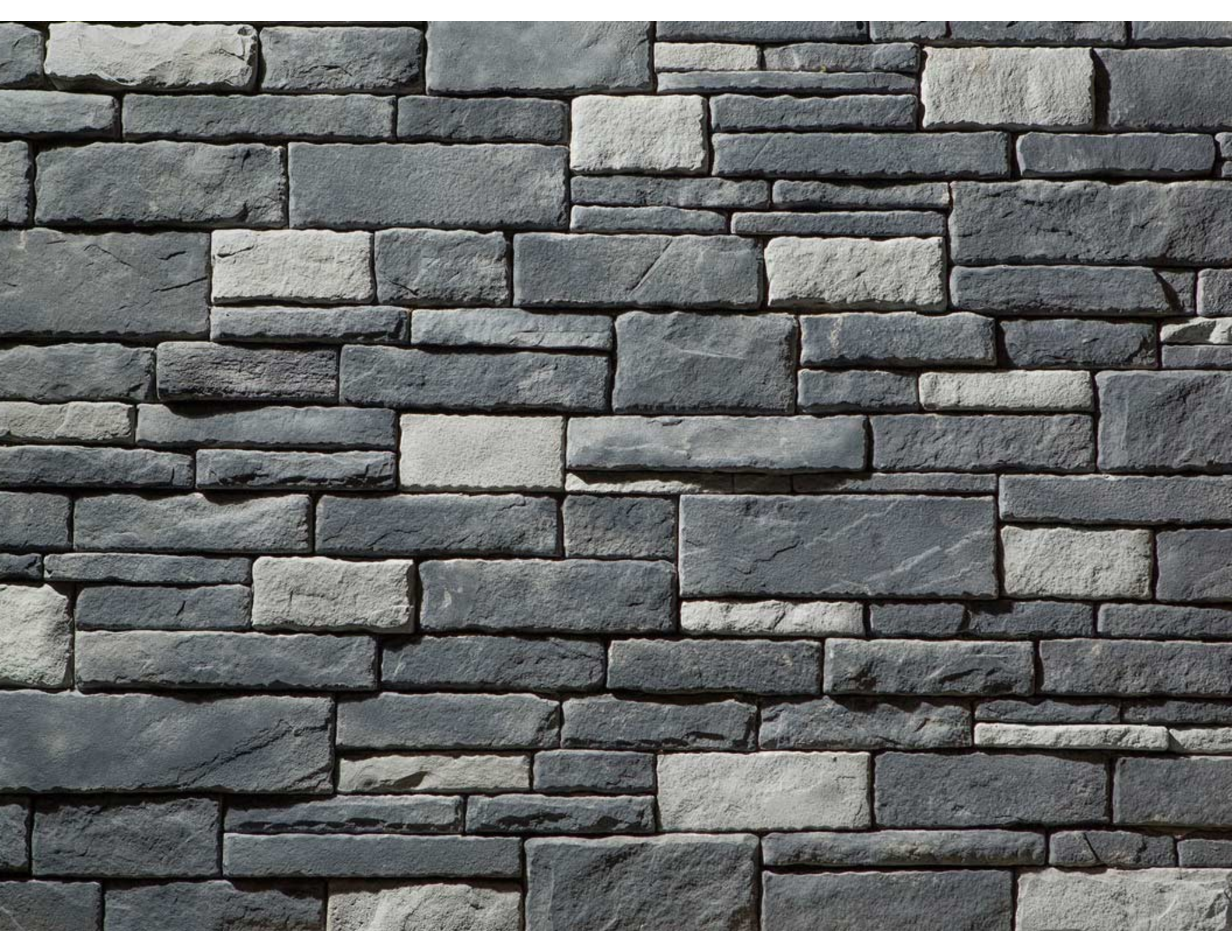
	SMP AND TEXTURED	Woodgrain
FADE PROTECTION		
Paint Warranty	LIFETIME	20-YEAR
Paint Thickness	1.0 mil	Direct print
Fade Warranty	30-YEAR	20-YEAR
Fade Protection	✓	✓
RUST BLOCKING		
Advanced Rust Blocking	✓	✓
Perforation Warranty	20-YEAR	20-YEAR
Substrate Thickness	1.60 mil	1.60 mil
Substrate Coating	Galvalume	Galvalume
DENT RESISTANCE		
Advanced Dent Resistance	✓	✓
Steel Gauge	26 ga.	26 ga.

Board & Batten



centralstatesmfg.com

Copyright © 2023, Central States Manufacturing, Inc., All Rights Reserved.
CentralGuard® is a trademark of Central States® Manufacturing, Inc.
Galvalume® is a registered trademark of BIEC International, Inc.



ArrowLine® Shake



ArrowLine® Shake in
Royal Brown

Solid Colors Available



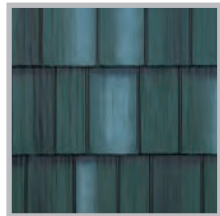
New
in 2023!



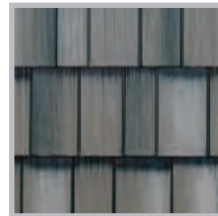
The **Striking Appearance** of Hand-Split Shakes Delivers **Timeless Style**.

Enhance the beauty of your home with ArrowLine® Shake. The craftsmanship of natural, hand-split cedar shakes is achieved with the added strength of metal.

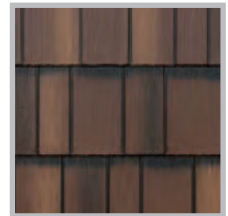
With a wide variety of solid and enhanced colors, the architectural detail of ArrowLine® Shake provides timeless style while protecting the beauty of your home or business with its 30-year fade protection.



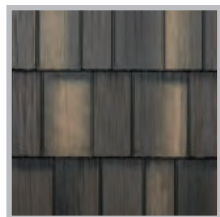
Hartford Green
Blend



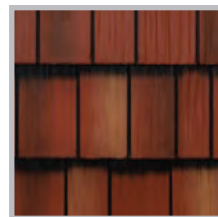
Charcoal Gray
Blend



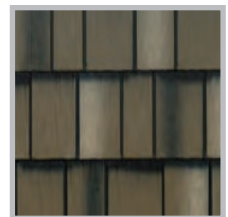
Royal Brown
Blend



Statuary Bronze
Blend



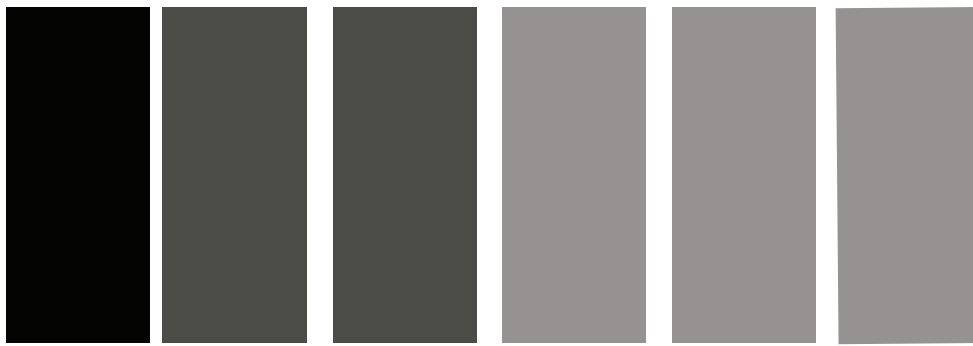
Classic Red
Blend



T-Tone
Blend

EDCO solid roofing colors meet or exceed ENERGY STAR® standards, which can reduce your energy costs.

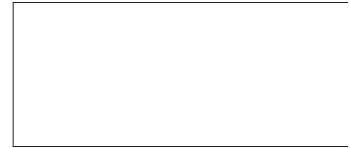
NOTE: All colors shown are as accurate as possible. Please refer to actual color chip samples before making your final selection.



Black Charcoal Gray Xanadu Light Gray Gray Pewter



Alamo



Brilliant



Hunter



Forest



Colony



Deep Red



Rustic



Burgundy



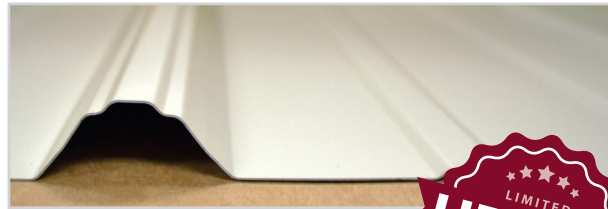
Cobalt



Ocean

Panel-Loc Plus™

Prime G90 Color Selection Tool



SHERWIN-WILLIAMS
Coil Coatings



Copper Metallic*†



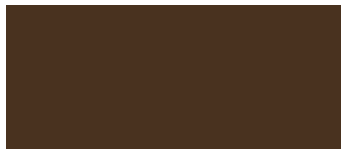
Desert



Hickory Moss



Taupe



Umber

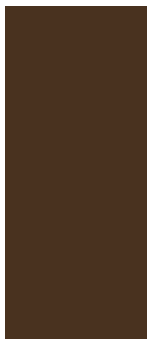


Choose CentralGuard for the best protection and a lifetime warranty.

*Copper Metallic panels must be installed in the same direction. See directional arrows or stickers provided on your panels. Contact your salesperson for accurate pricing. † Color variation between orders is normal and not cause for rejection. ‡ Weathering and appearance variation, including color, sheen, and spangle, is common in non-painted materials and is not a cause for rejection. For consistent appearance, choose a paint-finished product.

Colors on this chart are close representations of actual metal color, limited by printing and viewing conditions. Color matching optimized for outdoor viewing.

Brown



Dark Brown



Prairie



Light Stone



Sierra



Ivory



Choose CentralGuard® for the best protection and a lifetime warranty.

The CentralGuard paint system is our specific combination of everything that goes into making the highest-quality metal panels. The CentralGuard name guarantees you have the best protection and a lifetime paint warranty.

Choose CentralGuard for the perfect balance of fade protection, rust blocking, and dent resistance.



OUR BEST SELLER!

PRIMEG90 CentralGuard

LONG LASTING FINISH

Paint Warranty	LIFETIME
Paint Thickness	1.0 mil
Fade Warranty	35-YEAR
Advanced Fade Protection	YES
Chalking Warranty	35-YEAR

RUST BLOCKING

Advanced Rust Blocking	YES
Perforation Warranty	30-YEAR SIDE 25-YEAR ROOF
Substrate Thickness	1.53 mil
Substrate Coating	G90 Galvanized
Edge Rust Warranty	15-YEAR

DENT RESISTANCE

Advanced Dent Resistance	YES
Structural Grade Steel	100,000 PSI* NOMINAL
Steel Gauge	29 ga.

*Per ASTM 792 with industry tolerances.

Panel-Loc Plus features UL2218 approval for impact resistance and may qualify for a homeowners insurance discount. See your local insurance agent for qualifications.

Panel-Loc Plus™



clearybuilding.com



built with pride before the  is applied®

Copyright © 2023, Central States Manufacturing, Inc., All Rights Reserved. • CentralGuard® is a trademark of Central States® Manufacturing, Inc.