
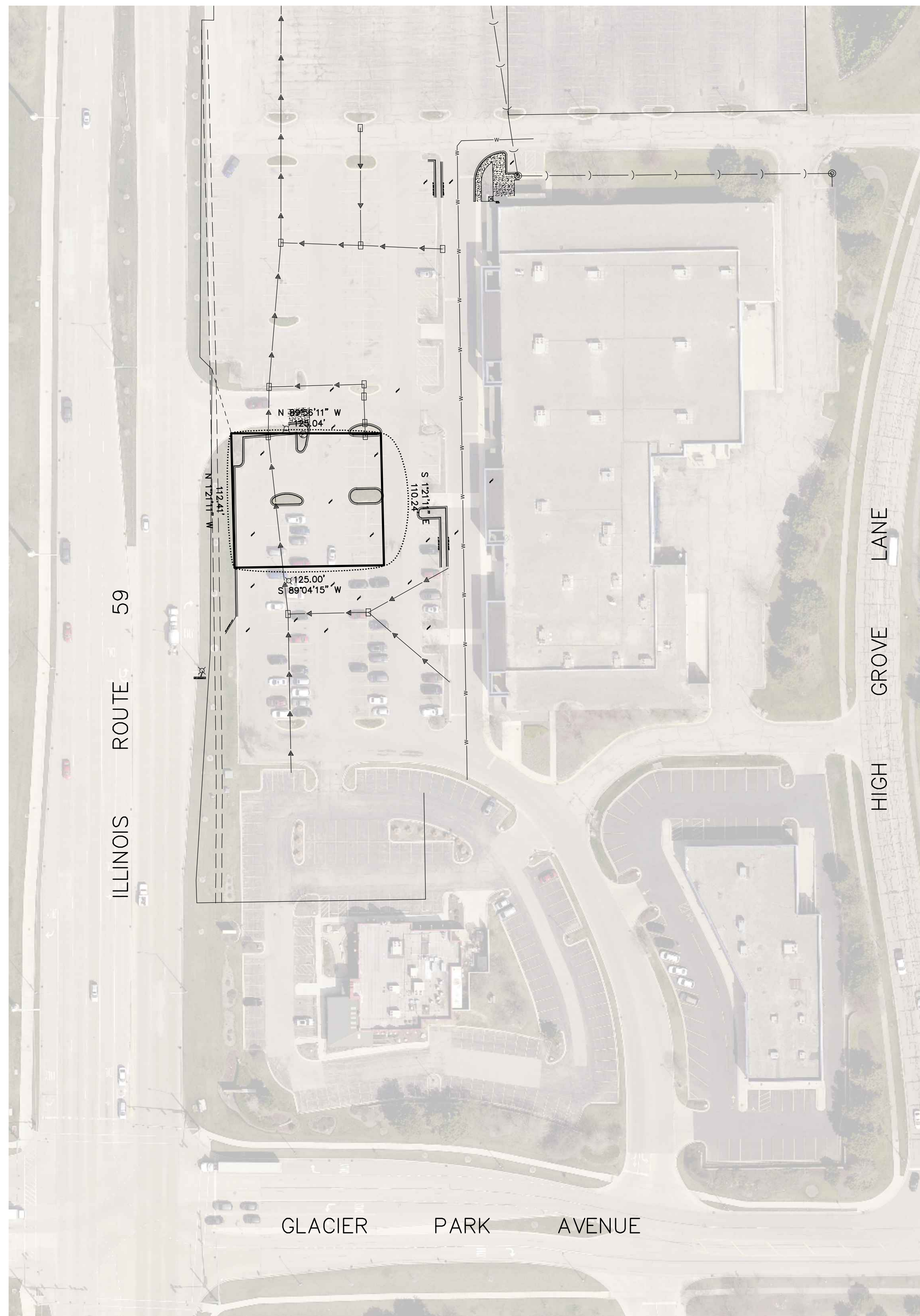
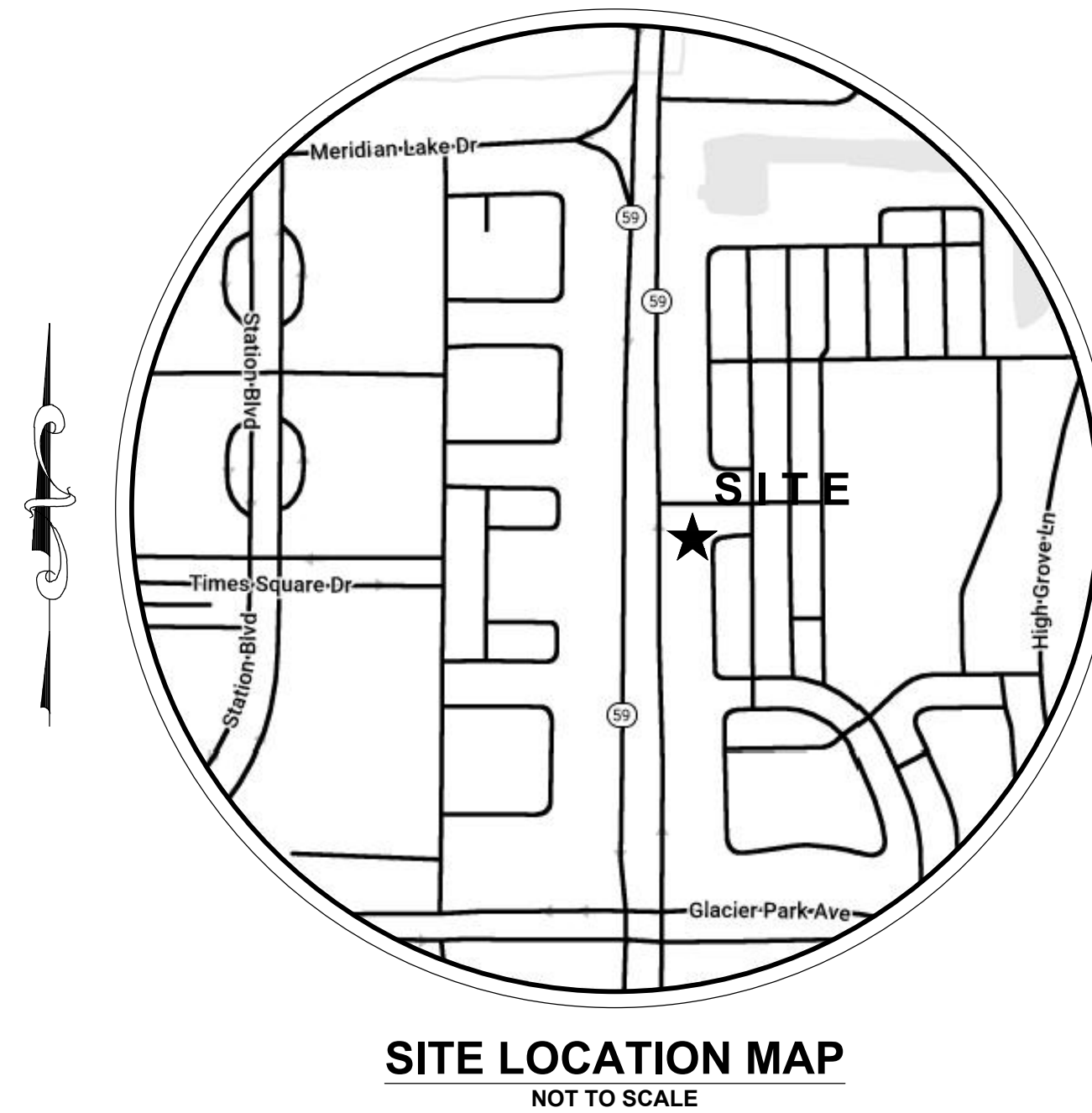
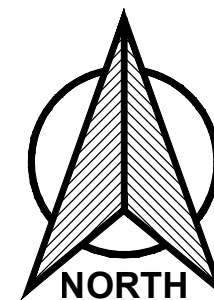


Final Engineering Plans for **SCOOTER'S COFFEE DRIVE-THRU** City of Naperville DuPage County, Illinois

APPROVED
 **CITY OF NAPERVILLE**
Address: 1931 Glacier Park
Last Revision Date: 9/11/2023
Approval Date: 10/4/23



OVERALL SITE MAP
SCALE: 1" = 60'



SITE LOCATION MAP
NOT TO SCALE

INDEX OF ENGINEERING SHEETS


SHEET No.	DESCRIPTION
C0.00	COVER SHEET
C1.00	EXISTING TOPOGRAPHY
C2.00	DEMOLITION PLAN
C3.00	SITE PLAN
C4.00	GRADING PLAN
C5.00	UTILITY PLAN
C5.01	UTILITY PLAN SANITARY SEWER FORCE MAIN
C6.00	GENERAL NOTES AND DETAILS
C7.00	GENERAL NOTES AND DETAILS
C8.00	GENERAL NOTES AND DETAILS
C9.00	GENERAL NOTES AND DETAILS
C10.00	GENERAL NOTES AND DETAILS

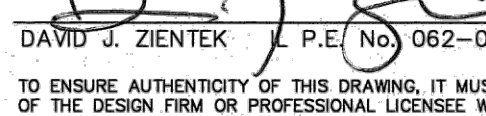
BENCHMARKS:
CITY BENCHMARKS:
CITY OF NAPERVILLE SURVEY MONUMENT
STATION 216
ELEVATION: 708.96 (NAVD88)
CITY OF NAPERVILLE SURVEY MONUMENT
STATION 16
ELEVATION: 702.56 (NAVD88)
SITE BENCHMARK 1: (TO BE REMOVED)
CUT CROSS IN TOP OF CURB ON SOUTH SIDE OF ISLAND
IN CENTER OF PARKING LOT. (AS SHOWN)
ELEVATION: 703.55 (NAVD88)
SITE BENCHMARK 2:
CUT CROSS ON EAST SIDE OF LIGHT POLE BASE, ±5'
EAST OF EDGE OF PAVEMENT OF ROUTE 59. (NOT SHOWN)
ELEVATION: 706.76 (NAVD88)

OWNER / DEVELOPER:
SCORILO, LLC,
3720 BIRCH LANE
NAPERVILLE, ILLINOIS 60564

LAND SURVEYOR / ENGINEER:
RUETTIGER, TONELLI & ASSOCIATES, INC.
129 CAPISTA DRIVE
SHOREWOOD, ILLINOIS 60404
Ph. (815) 744-6600

- NOTES:**
- PROPERTY LINE GEOMETRY AND EASEMENTS DEPICTED ON THE IMPROVEMENT PLANS DO NOT NECESSARILY REPRESENT THE FINAL GEOMETRY AND EASEMENTS SHOWN ON THE MOST RECENT PLAT OF SUBDIVISION. REFER TO THE PLAT OF SUBDIVISION FOR THIS INFORMATION.
 - DUE TO THE UNCERTAINTY OF SEASONAL GROUND WATER TABLES AND THE GEOPHYSICAL CONDITIONS AFFECTING GROUND WATER MOVEMENT, RUETTIGER, TONELLI & ASSOCIATES TAKES NO RESPONSIBILITY FOR THE MANAGEMENT OF GROUND WATER ASSOCIATED WITH SUB-GRADE CONSTRUCTION, BASEMENTS OR OTHER LIKE FACILITIES CONSTRUCTED BELOW THE FINISHED SURFACE GRADE OF THE PROPERTY ARE AT THE RISK OF THE BUILDER/OWNER.

TO THE BEST OF OUR KNOWLEDGE AND BELIEF THE DRAINAGE OF SURFACE WATERS WILL NOT BE CHANGED BY THE CONSTRUCTION OF SUCH SUBDIVISION OR ANY PART THEREOF, OR THAT IF SUCH SURFACE WATER DRAINAGE WILL BE CHANGED, REASONABLE PROVISIONS HAVE BEEN MADE FOR THE COLLECTION AND DISCHARGE OF SURFACE WATERS INTO PUBLIC OR PRIVATE AREAS AND/OR DRAINS WHICH THE SUBDIVIDER HAS A RIGHT TO USE AND THAT SUCH SURFACE WATERS WILL BE PLANNED FOR IN ACCORDANCE WITH GENERALLY ACCEPTED ENGINEERING PRACTICES SO AS TO REDUCE THE LIKELIHOOD OF SUBSTANTIVE DAMAGE TO THE ADJOINING PROPERTY BECAUSE OF THE CONSTRUCTION OF THE SUBDIVISION.
DATED THIS 11th DAY OF SEPTEMBER A.D. 2023.

ENGINEER - IL PROFESSIONAL DESIGN FIRM No. 184-001251.
TO ENSURE AUTHENTICITY OF THIS DRAWING, IT MUST BEAR THE EMBOSSED SEAL OF THE DESIGN FIRM OR PROFESSIONAL LICENSEE WHO PREPARED THIS DRAWING. (EPRES 11-26-2023)

I, DAVID J. ZIENTEK, A REGISTERED PROFESSIONAL ENGINEER IN THE STATE OF ILLINOIS, HEREBY CERTIFY THAT THESE IMPROVEMENT PLANS HAVE BEEN PREPARED UNDER MY SUPERVISION BY RUETTIGER, TONELLI & ASSOCIATES, INC., ILLINOIS PROFESSIONAL DESIGN FIRM No. 184-001251.
DATED THIS 11th DAY OF SEPTEMBER, 2023.

DAVID J. ZIENTEK, P.E. (No. 062-060061 (EXPIRES 11-30-2023))
TO ENSURE AUTHENTICITY OF THIS DRAWING, IT MUST BEAR THE EMBOSSED SEAL OF THE DESIGN FIRM OR PROFESSIONAL LICENSEE WHO PREPARED THIS DRAWING.

Call Before You Dig

ILLINOIS ONE-CALL SYSTEM
CONTACT J.U.L.I.E. at 811 or 800-892-0123
48 Hours (2 Working Days) BEFORE YOU DIG.
Include the following:
County, City/Township, Section & 1/4 Section No.

REVISIONS					
No.	DATE	DESCRIPTION	BY	No.	DATE
0	6-7-2023	PLAN SET SUBMITTAL	ECH		
1	8-11-2023	REVISED PER CITY OF NAPERVILLE REVIEW	ECH		
2	9-11-2023	REVISED TRANSFORMER LOCATION	DJZ		

DOCUMENTATION:
PROJECT No.: 20230186
DATE: 3-11-2023
FIELD BOOK: b:28-43 p:45-46
DRAWN BY: ech
CHECKED BY: DJZ



Ruettiger, Tonelli & Associates, Inc.
Surveyors • Engineers • Planners • Landscape Architects • G.I.S. Consultants
129 CAPISTA DRIVE - SHOREWOOD, ILLINOIS 60404
PH. (815) 744-6600 FAX (815) 744-0101
website: www.ruettigertonelli.com

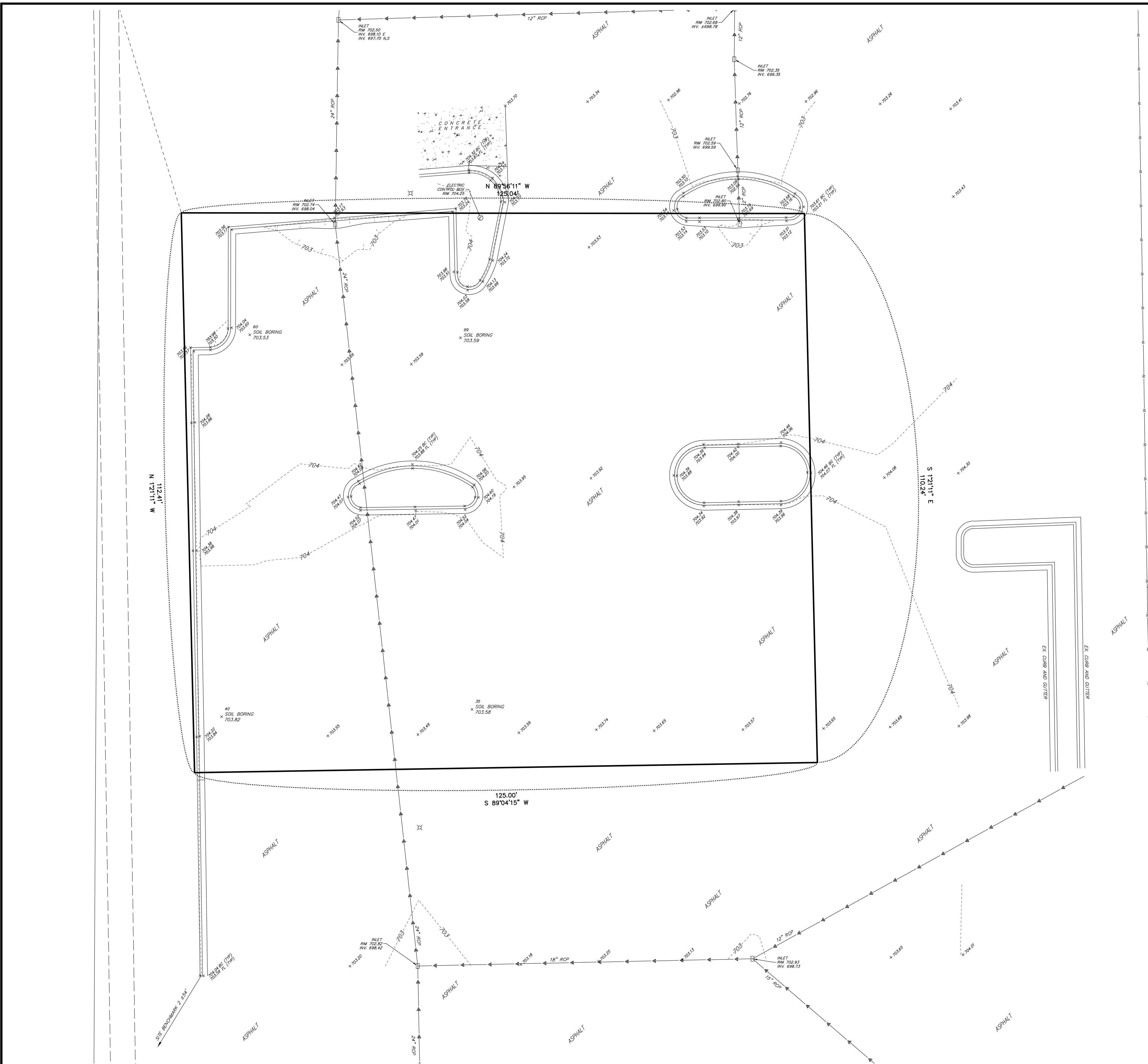
PROJECT TITLE:
SCOOTER'S COFFEE DRIVE-THRU
1931 GLAICER PARK
NAPERVILLE, ILLINOIS

DRAWING TITLE:
COVER SHEET
DRAWING No.
323-0186-C1
SCALE:
AS NOTED
SHEET C0.00

LEGEND	
mea.	MEASURED
rec.	RECORDED
calc.	CALCULATED
●	FOUND SURVEY MONUMENT
■	SET 5/8" REBAR UNLESS OTHERWISE NOTED
---	SUBJECT BOUNDARY
---	ADJACENT BOUNDARY
---	EASEMENT LINE
---	BUILDING SETBACK LINE
XXXXX	ELEVATION
-----	CONTOUR
====	CONCRETE CURB AND GUTTER
BC	BACK OF CURB
FL	FLOWLINE
X	LIGHT POLE
— —	SANITARY SEWER
⊙	SANITARY SEWER MANHOLE
— —	WATER MAIN
— —	STORM SEWER
□	STORM SEWER STRUCTURE
RCP	REINFORCED CONCRETE PIPE
▭	CONCRETE AREA



BENCHMARKS:	
CITY BENCHMARKS:	
CITY OF NAPERVILLE SURVEY MONUMENT	
STATION: 216	ELEVATION: 708.96 (NAVD88)
CITY OF NAPERVILLE SURVEY MONUMENT	
STATION: 16	ELEVATION: 702.56 (NAVD88)
SITE BENCHMARK 1: (TO BE REMOVED)	
CUT CROSS IN TOP OF CURB ON SOUTH SIDE OF ISLAND IN CENTER OF PARKING LOT. (AS SHOWN)	
ELEVATION: 703.55 (NAVD88)	
SITE BENCHMARK 2:	
CUT CROSS ON EAST SIDE OF LIGHT POLE BASE, ±5'	
EAST OF EDGE OF PAVEMENT OF ROUTE 59. (NOT SHOWN)	
ELEVATION: 706.76 (NAVD88)	



REVISIONS				
No.	DATE	DESCRIPTION	BY	
0	6-7-2023	PLAN SET SUBMITTAL	ECH	
1	8-11-2023	REVISED PER CITY OF NAPERVILLE REVIEW	ECH	
2	9-11-2023	REVISED TRANSFORMER LOCATION	DJZ	

RT & A
Ruettiger, Tonelli & Associates, Inc.
 Surveyors • Engineers • Planners • Landscape Architects • G.I.S. Consultants
 129 CAPISTA DRIVE - SHOREWOOD, ILLINOIS 60404
 PH. (815) 744-6600 FAX (815) 744-0101
 website: www.ruettigertonelli.com

PROJECT TITLE:
SCOOTER'S COFFEE DRIVE-THRU
1931 GLAICER PARK
NAPERVILLE, ILLINOIS

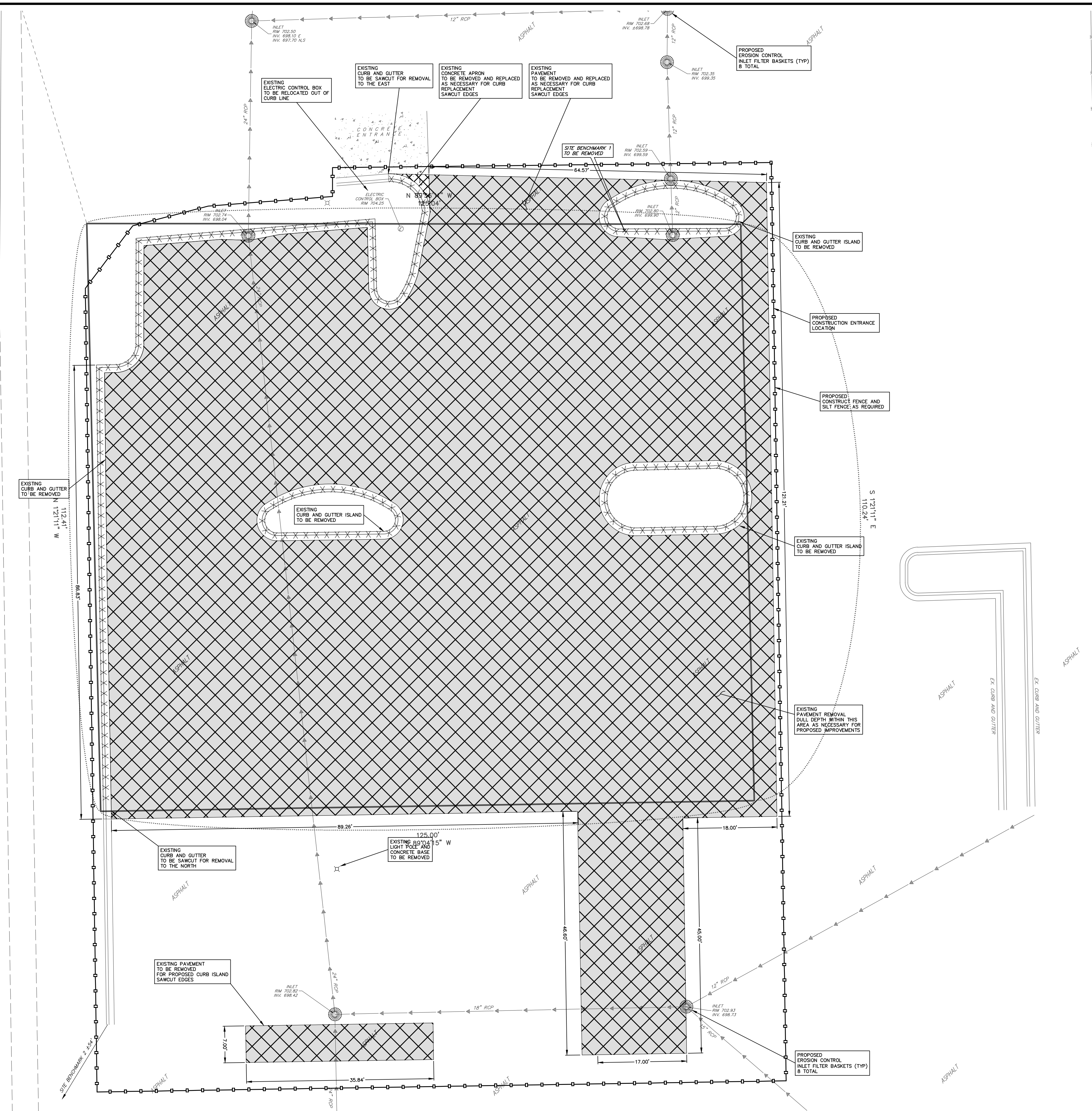
DRAWING TITLE:
EXISTING TOPOGRAPHY

DRAWING No.
323-0186-C1
 SCALE:
AS NOTED
SHEET C1.00

N:\2023\0186\Engineering\Plan_Sheet_C1 - Scooter's Coffee Big Press\C100_Exist_Topog_Layout_18112023_2:01:09 PM.dwg

LEGEND

- mea. MEASURED
- rec. RECORDED
- calc. CALCULATED
- FOUND SURVEY MONUMENT
- SET 5/8" REBAR UNLESS OTHERWISE NOTED
- SUBJECT BOUNDARY
- ADJACENT BOUNDARY
- EASEMENT LINE
- BUILDING SETBACK LINE
- CONCRETE CURB AND GUTTER
- ⊕ LIGHT POLE
- ⊕ SANITARY SEWER
- ⊕ SANITARY SEWER MANHOLE
- ⊕ WATER MAIN
- ⊕ STORM SEWER
- ⊕ STORM SEWER STRUCTURE
- ⊕ RCP REINFORCED CONCRETE PIPE
- ▭ CONCRETE AREA
- ▭ AREA TO BE REMOVED
- XXXXXX ITEM TO BE REMOVED
- PROPOSED CONSTRUCTION/SILT FENCE
- ⊕ PROPOSED EROSION CONTROL INLET FILTER BASKET



Call Before You Dig

JULIE
 ILLINOIS
 (800)-CALL SYSTEM

CONTACT JULIE at 811 or 800-892-0123
 48 Hours (2 Working Days) BEFORE YOU DIG.
 Include the following:
 County, City/Township, Section & 1/4 Section No.

BENCHMARKS:

CITY BENCHMARKS:
 CITY OF NAPERVILLE SURVEY MONUMENT
 STATION: 216
 ELEVATION: 708.96 (NAVD88)

CITY OF NAPERVILLE SURVEY MONUMENT
 STATION: 16
 ELEVATION: 702.56 (NAVD88)

SITE BENCHMARK 1: (TO BE REMOVED)
 OUT CROSS IN TOP OF CURB ON SOUTH SIDE OF ISLAND
 IN CENTER OF PARKING LOT. (AS SHOWN)
 ELEVATION: 703.55 (NAVD88)

SITE BENCHMARK 2:
 OUT CROSS ON EAST SIDE OF LIGHT POLE BASE, ±5'
 EAST OF EDGE OF PAVEMENT OF ROUTE 59. (NOT SHOWN)
 ELEVATION: 706.76 (NAVD88)

REVISIONS				
No.	DATE	DESCRIPTION	BY	
0	6-7-2023	PLAN SET SUBMITTAL	ECH	
1	8-11-2023	REVISED PER CITY OF NAPERVILLE REVIEW	ECH	
2	9-11-2023	REVISED TRANSFORMER LOCATION	DJZ	

DOCUMENTATION:				
No.	DATE	DESCRIPTION	BY	
		PROJECT No.: 20230186		
		DATE: 3-11-2023		
		FIELD BOOK: b-28-43 p45-46		
		DRAWN BY: ech		
		CHECKED BY: DJZ		

RT & A
Ruettiger, Tonelli & Associates, Inc.
 Surveyors • Engineers • Planners • Landscape Architects • G.I.S. Consultants
 129 CAPISTA DRIVE - SHOREWOOD, ILLINOIS 60404
 PH. (815) 744-6600 FAX (815) 744-0101
 website: www.ruettigertonelli.com

PROJECT TITLE:
SCOOTER'S COFFEE DRIVE-THRU
1931 GLAICER PARK
NAPERVILLE, ILLINOIS

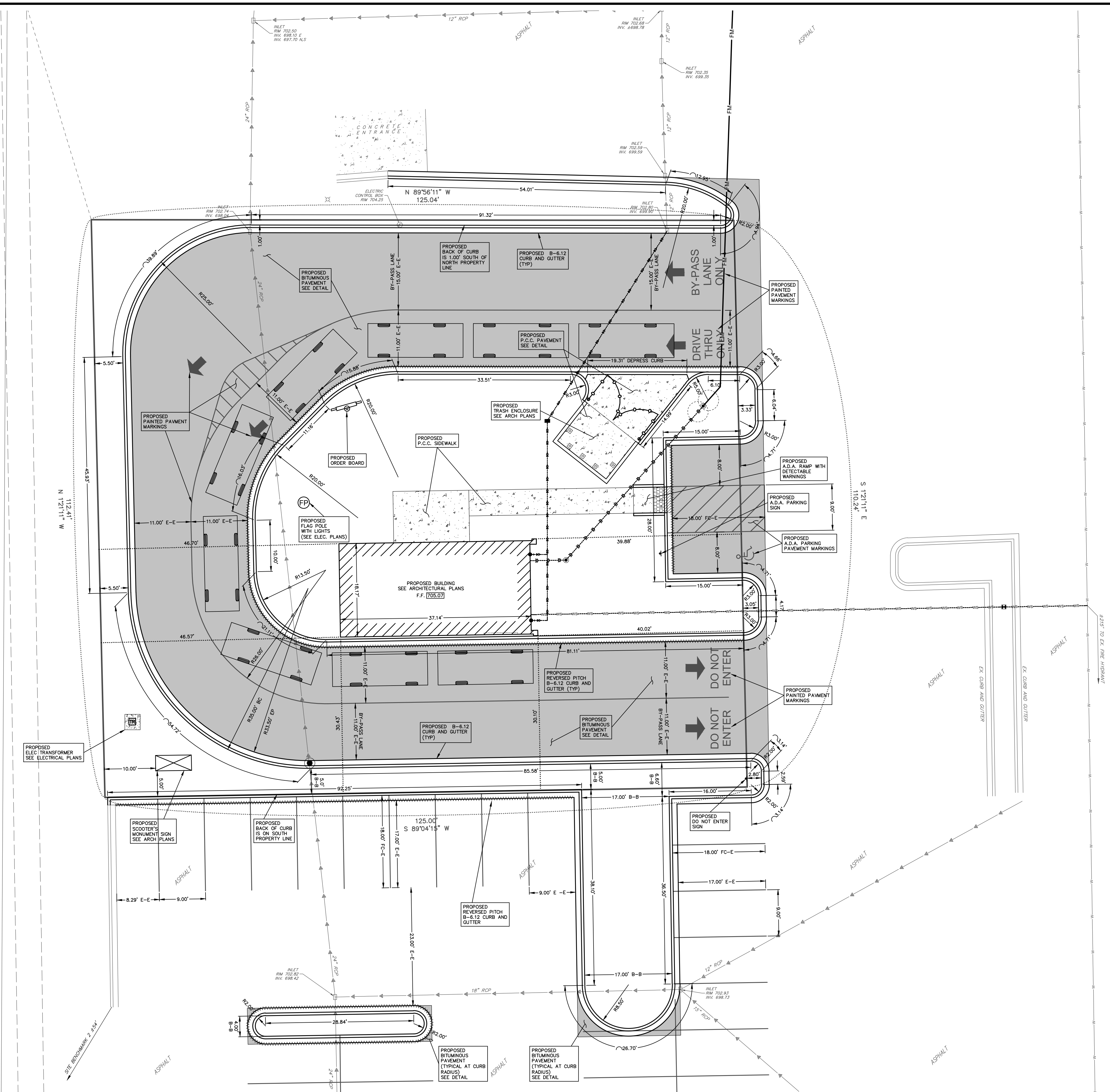
DRAWING TITLE:
DEMOLITION PLAN

DRAWING No.
323-0186-C1

SCALE:
AS NOTED

SHEET C2.00

N:\1931\20230186\Engineering\DWG_Sheet\1 - Scooter's Coffee Bldg_Plan\20230186_Demolition_Plan.dwg, Layout: 1, 9/11/2023, 2:19 PM, Administrator



VEHICLE SHOWN FOR STACKING:

Chevrolet Suburban 3/4 Ton LS
 Overall Length 18.533ft
 Overall Width 6.592ft

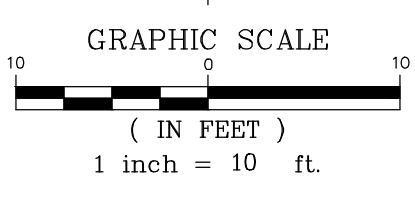
LOT INFORMATION:

LOT AREA 13,915.96 S.F.
 BUILDING AREA 677.13 S.F.
 PROPOSED F.A.R. 0.048
 ZONING B-2
 SETBACKS
 FRONT / WEST 46.57'
 REAR / EAST 39.88'
 SIDE / NORTH 61.99'
 SIDE / SOUTH 30.10'

CITY OF NAPERVILLE
 Address: 1931 Glacier Park
 Last Revision Date: 9/11/2023
 Approval Date: 10/4/23

LEGEND

meo.	MEASURED
rec.	RECORDED
calc.	CALCULATED
●	FOUND SURVEY MONUMENT
■	SET 5/8" REBAR UNLESS OTHERWISE NOTED
---	SUBJECT BOUNDARY
---	ADJACENT BOUNDARY
---	EASEMENT LINE
---	BUILDING SETBACK LINE
---	CONCRETE CURB AND GUTTER
---	CONCRETE AREA
---	EDGE OF PAVEMENT TO EDGE OF PAVEMENT DIMENSION
---	FACE OF CURB TO EDGE OF PAVEMENT DIMENSION
---	ARC LENGTH DIMENSION
---	PROPOSED SIGN
---	PROPOSED REVERSED PITCH CURB AND GUTTER
---	PROPOSED CONCRETE AREA
---	PROPOSED ASPHALT AREA
---	PROPOSED FLAG POLE LOCATION



PROPOSED SITE GEOMETRY NOTES:

- 1.) ALL PARKING STALL, SAFETY ISLAND, NO PARKING AREAS AND CROSSWALK STRIPING SHALL BE 4 INCH WIDE STANDARD 1D.O.T. YELLOW. DIAGONAL STRIPING SHALL BE 2 FT. ON CENTER.
- 2.) ALL SIGNS SHALL MEET THE REQUIREMENTS AND STANDARDS OF THE U.S. DEPT. OF TRANSPORTATION MANUAL ON UNIFORM TRAFFIC CONTROL DEVICES, LATEST EDITION; THE ILLINOIS ADMINISTRATIVE CODE, LATEST ADDITION; AND ALL LOCAL ORDINANCES.
- 3.) UNLESS OTHERWISE SPECIFIED, ALL DIMENSIONS ARE SHOWN TO THE BACK OF THE CURBLINE WHERE APPLICABLE.
- 4.) UNLESS OTHERWISE SPECIFIED, ALL ON-SITE CURB IS B-6.12.
- 5.) REFER TO PROPOSED SITE PHOTOMETRIC PLANS BY ELECTRICAL CONTRACTOR FOR SPECIFIC ON-SITE ILLUMINATION INCLUDING WALL MOUNTED LIGHTING AND COVERED PATIO/PARKING LIGHTING.

Call Before You Dig
JULIE
 ILLINOIS
 (800)-CALL SYSTEM
 CONTACT JULIE at 811 or 800-892-0123
 48 Hours (2 Working Days) BEFORE YOU DIG.
 Include the following:
 County, City/Township, Section &/4, Section No.

BENCHMARKS:

CITY BENCHMARKS:
 CITY OF NAPERVILLE SURVEY MONUMENT
 STATION: 216
 ELEVATION: 708.96 (NAVD88)

CITY OF NAPERVILLE SURVEY MONUMENT
 STATION: 16
 ELEVATION: 702.56 (NAVD88)

SITE BENCHMARK 1: (TO BE REMOVED)
 CUT CROSS IN TOP OF CURB ON SOUTH SIDE OF ISLAND IN CENTER OF PARKING LOT. (AS SHOWN)
 ELEVATION: 703.55 (NAVD88)

SITE BENCHMARK 2:
 CUT CROSS ON EAST SIDE OF LIGHT POLE BASE, ±5'
 EAST OF EDGE OF PAVEMENT OF ROUTE 59. (NOT SHOWN)
 ELEVATION: 706.76 (NAVD88)

REVISIONS

No.	DATE	DESCRIPTION	BY
0	6-7-2023	PLAN SET SUBMITTAL	ECH
1	8-11-2023	REVISED PER CITY OF NAPERVILLE REVIEW	ECH
2	9-11-2023	REVISED TRANSFORMER LOCATION	DJZ

DOCUMENTATION:

PROJECT No.: 20230186
 DATE: 3-11-2023
 FIELD BOOK: b-28-43 p.45-46
 DRAWN BY: ech
 CHECKED BY: DJZ

RT & A
Ruettiger, Tonelli & Associates, Inc.
 Surveyors • Engineers • Planners • Landscape Architects • G.I.S. Consultants
 129 CAPISTA DRIVE - SHOREWOOD, ILLINOIS 60404
 PH. (815) 744-6600 FAX (815) 744-0101
 website: www.ruettigertonnelli.com

PROJECT TITLE:
SCOOTER'S COFFEE DRIVE-THRU
1931 GLAICER PARK
NAPERVILLE, ILLINOIS

DRAWING TITLE:
SITE PLAN

DRAWING No.
323-0186-C1

SCALE:
AS NOTED

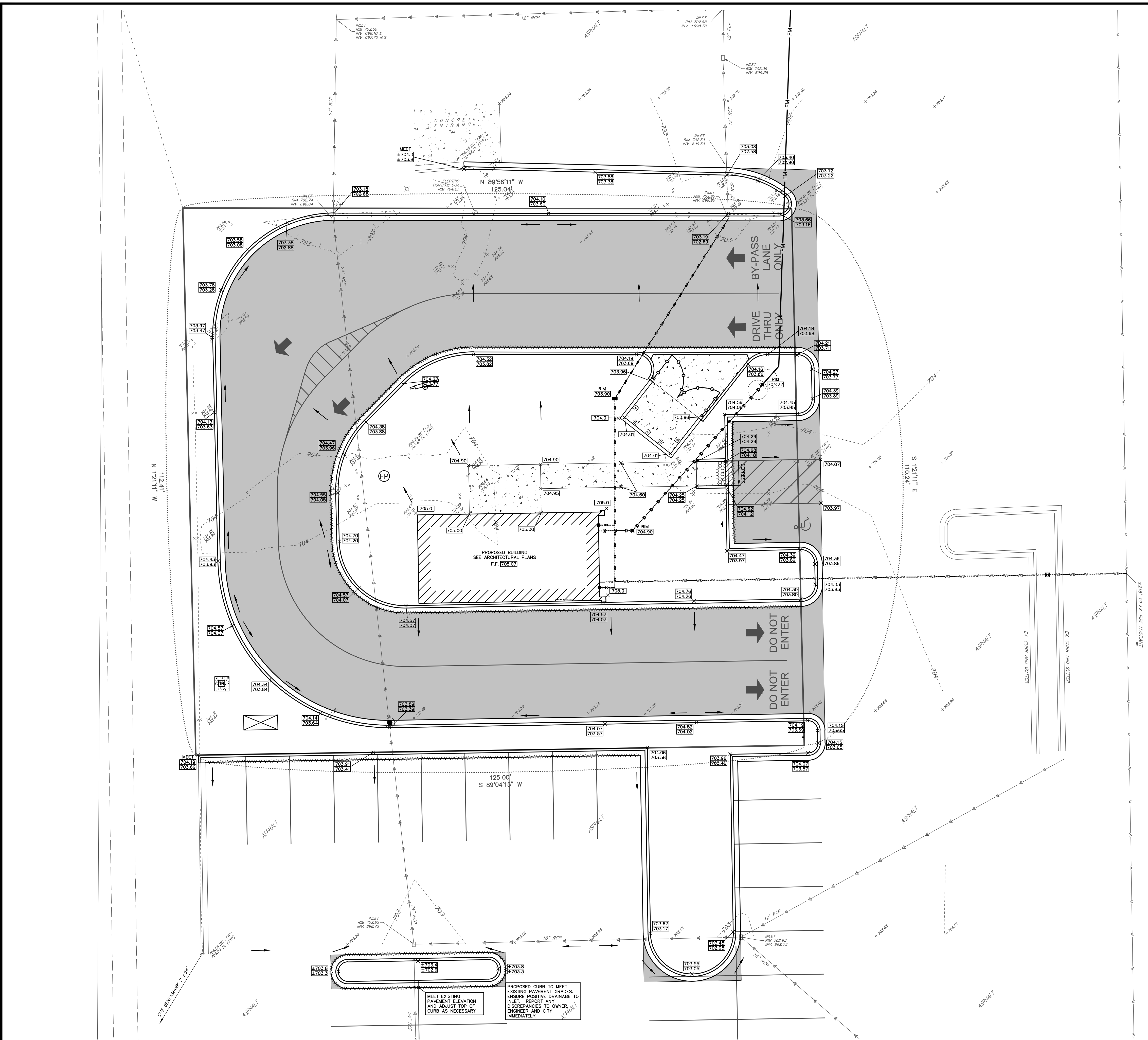
SHEET C3.00

N:\2023\0186\Engineering\0186_SitePlan_C3.00_Site Geometry.dwg, Layout1, 9/11/2023, 2:01:27 PM, d:\m\m\m

LEGEND	
mea.	MEASURED
rec.	RECORDED
calc.	CALCULATED
●	FOUND SURVEY MONUMENT
■	SET 5/8" REBAR UNLESS OTHERWISE NOTED
---	SUBJECT BOUNDARY
---	ADJACENT BOUNDARY
---	EASEMENT LINE
---	BUILDING SETBACK LINE
XXXXXX	ELEVATION
----	CONTOUR
----	CONCRETE CURB AND GUTTER
BC	BACK OF CURB
FL	FLOWLINE
⊕	LIGHT POLE
⊕	SANITARY SEWER
⊕	SANITARY SEWER MANHOLE
W	WATER MAIN
W	STORM SEWER
W	STORM SEWER STRUCTURE
RCP	REINFORCED CONCRETE PIPE
▨	CONCRETE AREA
XXX.X	PROPOSED GRADE
XXX.X	PROPOSED OVERLAND FLOW DIRECTION
XXX.X	PROPOSED TOP OF CURB
XXX.X	PROPOSED PAVEMENT
FP	PROPOSED FLAG POLE LOCATION



BENCHMARKS:
 CITY BENCHMARKS:
 CITY OF NAPERVILLE SURVEY MONUMENT
 STATION 216
 ELEVATION: 708.96 (NAVD88)
 CITY OF NAPERVILLE SURVEY MONUMENT
 STATION 16
 ELEVATION: 702.56 (NAVD88)
 SITE BENCHMARK 1: (TO BE REMOVED)
 CUT CROSS IN TOP OF CURB ON SOUTH SIDE OF ISLAND
 IN CENTER OF PARKING LOT (AS SHOWN)
 ELEVATION: 703.55 (NAVD88)
 SITE BENCHMARK 2:
 CUT CROSS ON EAST SIDE OF LIGHT POLE BASE, ±5'
 EAST OF EDGE OF PAVEMENT OF ROUTE 59. (NOT SHOWN)
 ELEVATION: 706.76 (NAVD88)



REVISIONS				
No.	DATE	DESCRIPTION	BY	
0	6-7-2023	PLAN SET SUBMITTAL	ECH	
1	8-11-2023	REVISED PER CITY OF NAPERVILLE REVIEW	ECH	
2	9-11-2023	REVISED TRANSFORMER LOCATION	DJZ	

DOCUMENTATION:				
No.	DATE	DESCRIPTION	BY	
		PROJECT No.: 20230186		
		DATE: 3-11-2023		
		FIELD BOOK: b-28-43 p45-46		
		DRAWN BY: ech		
		CHECKED BY: DJZ		

RT & A
Ruettiger, Tonelli & Associates, Inc.
 Surveyors • Engineers • Planners • Landscape Architects • G.I.S. Consultants
 129 CAPISTA DRIVE - SHOREWOOD, ILLINOIS 60404
 PH. (815) 744-6600 FAX (815) 744-0101
 website: www.ruettigertonelli.com

PROJECT TITLE:
SCOOTER'S COFFEE DRIVE-THRU
1931 GLAICER PARK
NAPERVILLE, ILLINOIS

DRAWING TITLE:
GRADING PLAN

DRAWING No.
323-0186-C1
 SCALE:
AS NOTED
SHEET C4.00

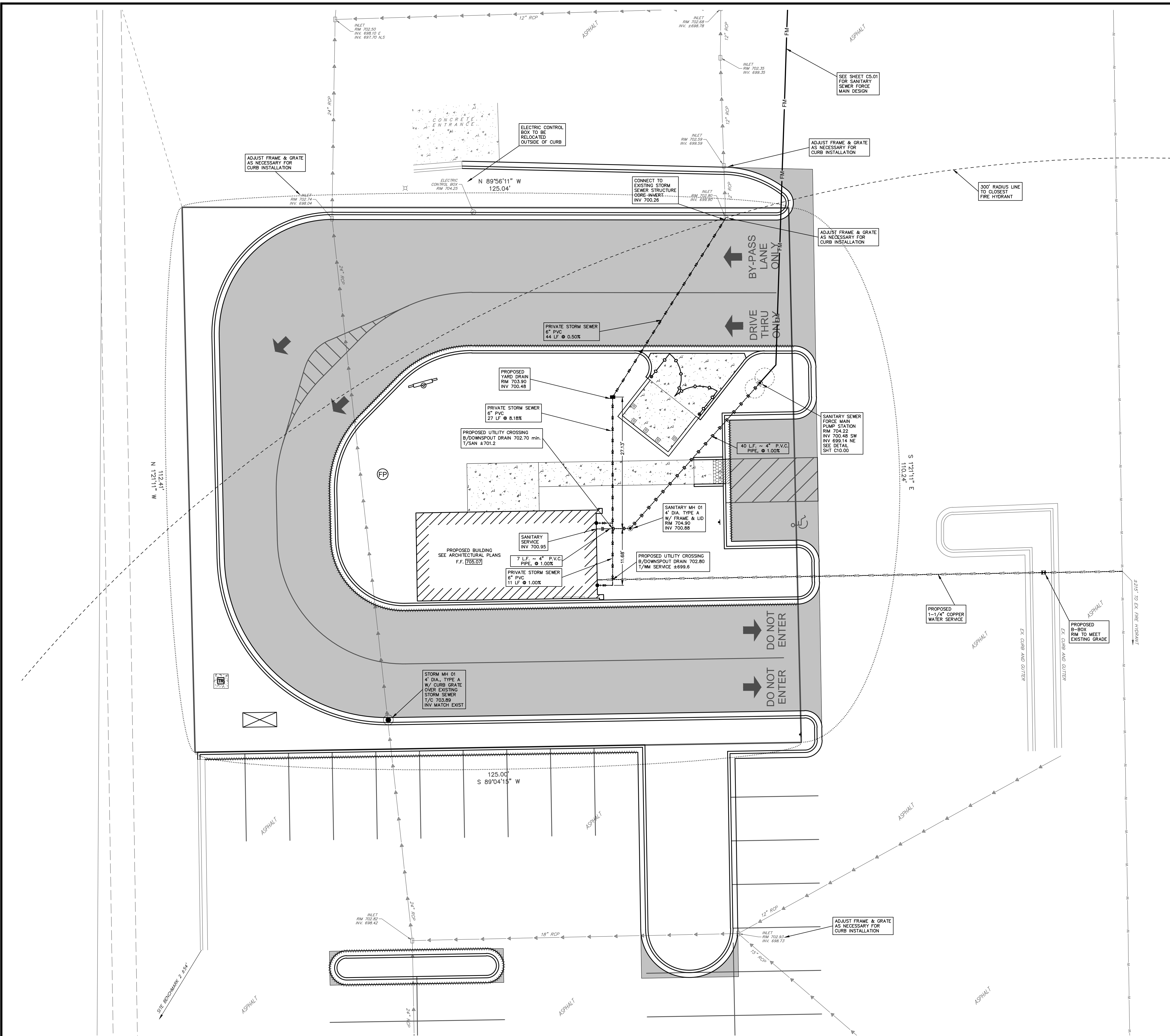
LEGEND	
mea.	MEASURED
rec.	RECORDED
calc.	CALCULATED
●	FOUND SURVEY MONUMENT
■	SET 5/8" REBAR UNLESS OTHERWISE NOTED
---	SUBJECT BOUNDARY
---	ADJACENT BOUNDARY
---	EASEMENT LINE
---	BUILDING SETBACK LINE
---	CONCRETE CURB AND GUTTER
⊕	LIGHT POLE
⊙	SANITARY SEWER
⊙	SANITARY SEWER MANHOLE
— — —	WATER MAIN
— — —	STORM SEWER
□	STORM SEWER STRUCTURE
▨	CONCRETE AREA
---	PROPOSED STORM SEWER SUMP LINE
■	PROPOSED YARD DRAIN
●	PROPOSED DOWNSPOUT
---	PROPOSED SANITARY SEWER SERVICE
FM	PROPOSED FORCE MAIN
⊙	PROPOSED SANITARY SEWER MANHOLE
---	PROPOSED WATER SERVICE
⊕	PROPOSED B-BOX
⊕	PROPOSED FLAG POLE LOCATION

PROPOSED UTILITY NOTES:

- 1.) ROOF DOWNSPOUTS TO BE PIPED TO YARD DRAIN.
- 2.) THE CONTRACTOR IS RESPONSIBLE FOR PERFORMING NEW HOT TAPS FOR THE WATER SERVICE AND THE SANITARY SEWER TAP.



BENCHMARKS:
 CITY BENCHMARKS:
 CITY OF NAPERVILLE SURVEY MONUMENT
 STATION 216
 ELEVATION: 708.96 (NAVD88)
 CITY OF NAPERVILLE SURVEY MONUMENT
 STATION 16
 ELEVATION: 702.56 (NAVD88)
 SITE BENCHMARK 1: (TO BE REMOVED)
 CUT CROSS IN TOP OF CURB ON SOUTH SIDE OF ISLAND
 IN CENTER OF PARKING LOT, (AS SHOWN)
 ELEVATION: 703.55 (NAVD88)
 SITE BENCHMARK 2:
 CUT CROSS ON EAST SIDE OF LIGHT POLE BASE, ±5'
 EAST OF EDGE OF PAVEMENT OF ROUTE 59. (NOT SHOWN)
 ELEVATION: 706.76 (NAVD88)



REVISIONS					
No.	DATE	DESCRIPTION	BY	No.	DATE
0	6-7-2023	PLAN SET SUBMITTAL	ECH		
1	8-11-2023	REVISED PER CITY OF NAPERVILLE REVIEW	ECH		
2	9-11-2023	REVISED TRANSFORMER LOCATION	DJZ		

DOCUMENTATION:
 PROJECT No.: 20230186
 DATE: 3-11-2023
 FIELD BOOK: b-28-43 p.45-46
 DRAWN BY: ech
 CHECKED BY: DJZ

RT & A
Ruettiger, Tonelli & Associates, Inc.
 Surveyors • Engineers • Planners • Landscape Architects • G.I.S. Consultants
 129 CAPISTA DRIVE - SHOREWOOD, ILLINOIS 60404
 PH. (815) 744-6600 FAX (815) 744-0101
 website: www.ruettigertonelli.com

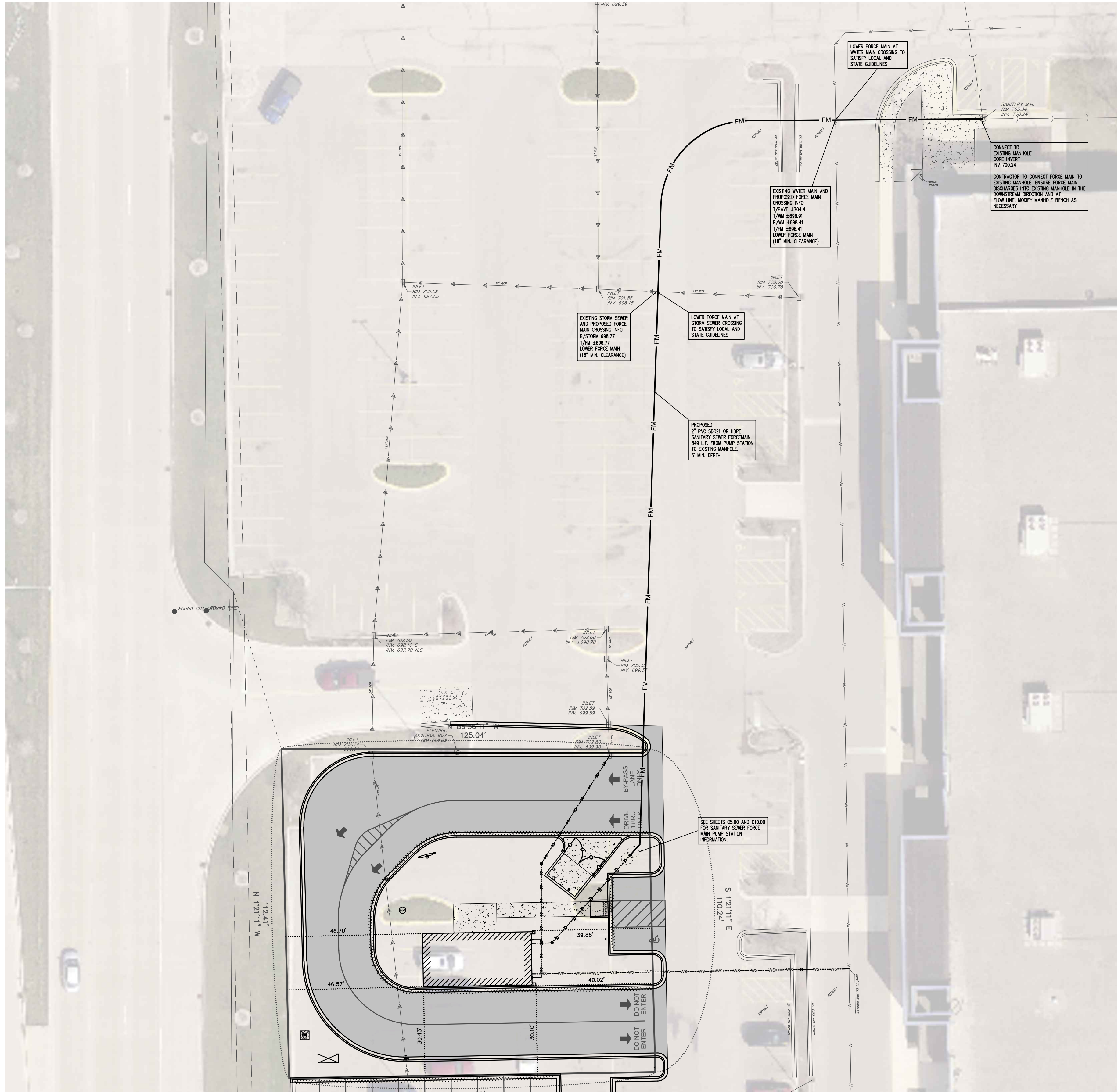
PROJECT TITLE:
SCOOTER'S COFFEE DRIVE-THRU
1931 GLAICER PARK
NAPERVILLE, ILLINOIS

DRAWING TITLE:
UTILITY PLAN
(1 of 2)

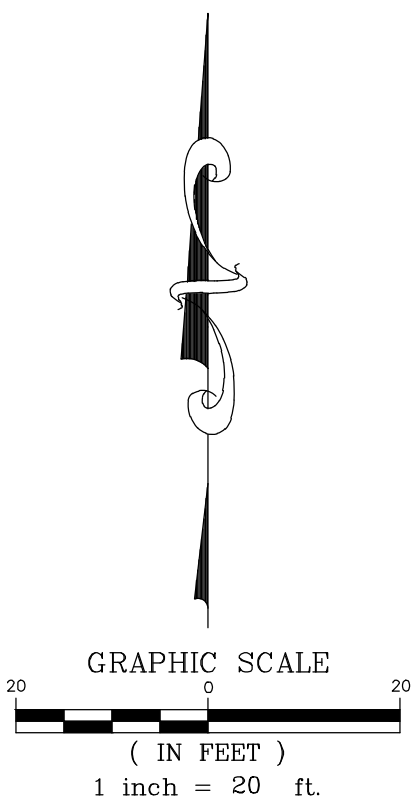
DRAWING No.:
 323-0186-C1

SCALE:
 AS NOTED

SHEET C5.00



APPROVED
CITY OF NAPERVILLE
 Address: 1931 Glacier Park
 Last Revision Date: 9/11/2023
 Approval Date: 10/4/23



LEGEND

mea.	MEASURED
rec.	RECORDED
calc.	CALCULATED
●	FOUND SURVEY MONUMENT
■	SET 5/8" REBAR UNLESS OTHERWISE NOTED
---	SUBJECT BOUNDARY
- - -	ADJACENT BOUNDARY
- - - -	EASEMENT LINE
- - - - -	BUILDING SETBACK LINE
====	CONCRETE CURB AND GUTTER
⊕	LIGHT POLE
⊙	SANITARY SEWER MANHOLE
— —	WATER MAIN
— — —	STORM SEWER
□	STORM SEWER STRUCTURE
▭	CONCRETE AREA
— — — — —	PROPOSED STORM SEWER SUMP LINE
■	PROPOSED YARD DRAIN
●	PROPOSED DOWNSPOUT
— — — —	PROPOSED SANITARY SEWER SERVICE
— — — — —	PROPOSED FORCE MAIN
⊙	PROPOSED SANITARY SEWER MANHOLE
— — — —	PROPOSED WATER SERVICE
⊕	PROPOSED B-BOX
⊕	PROPOSED FLAG POLE LOCATION

PROPOSED UTILITY NOTES:

- 1.) ROOF DOWNSPOUTS TO BE PIPED TO YARD DRAIN.
- 2.) THE CONTRACTOR IS RESPONSIBLE FOR PERFORMING NEW HOT TAPS FOR THE WATER SERVICE AND THE SANITARY SEWER TAP.



BENCHMARKS:
 CITY BENCHMARKS:
 CITY OF NAPERVILLE SURVEY MONUMENT
 STATION 216
 ELEVATION: 708.96 (NAVD88)
 CITY OF NAPERVILLE SURVEY MONUMENT
 STATION 16
 ELEVATION: 702.56 (NAVD88)
 SITE BENCHMARK 1: (TO BE REMOVED)
 CUT CROSS IN TOP OF CURB ON SOUTH SIDE OF ISLAND
 IN CENTER OF PARKING LOT. (AS SHOWN)
 ELEVATION: 703.55 (NAVD88)
 SITE BENCHMARK 2:
 CUT CROSS ON EAST SIDE OF LIGHT POLE BASE, ±5'
 EAST OF EDGE OF PAVEMENT OF ROUTE 59. (NOT SHOWN)
 ELEVATION: 706.76 (NAVD88)

REVISIONS

No.	DATE	DESCRIPTION	BY
0	6-7-2023	PLAN SET SUBMITTAL	ECH
1	8-11-2023	REVISED PER CITY OF NAPERVILLE REVIEW	ECH
2	9-11-2023	REVISED TRANSFORMER LOCATION	DJZ

DOCUMENTATION:
 PROJECT No.: 20230186
 DATE: 3-11-2023
 FIELD BOOK: b:28-43 p:45-46
 DRAWN BY: ech
 CHECKED BY: DJZ

RT & A
Ruettiger, Tonelli & Associates, Inc.
 Surveyors • Engineers • Planners • Landscape Architects • G.I.S. Consultants
 129 CAPISTA DRIVE - SHOREWOOD, ILLINOIS 60404
 PH. (815) 744-6600 FAX (815) 744-0101
 website: www.ruettigertonelli.com

PROJECT TITLE:
SCOOTER'S COFFEE DRIVE-THRU
1931 GLAICER PARK
NAPERVILLE, ILLINOIS

DRAWING TITLE:
UTILITY PLAN
SANITARY SEWER FORCE MAIN
(2 of 2)

DRAWING No.
 323-0186-C1
SCALE:
 AS NOTED
SHEET C5.01

N:\2023\20230186\Engineering\DWG_Sheet\1 - Scooter's Coffee Bldg_Plan\CS01-Utility_02.dwg, Layer: 01, 9/11/2023 2:01:56 PM, ehawkins

29. DETECTABLE WARNING

- A. Detectable warnings shall be installed at alleys and commercial entrances when permanent traffic control devices are present and other locations where pedestrians are required to cross a hazardous vehicular way.
- B. Detectable warnings shall be installed if a walk crosses or adjoins a vehicular way, and the walking surfaces are not separated by curbs, railings, or other elements between the pedestrian areas and vehicular areas, the boundary between the areas shall be defined by a continuous, detectable warning, which is 36 in. in width.
- C. Detectable warnings shall be installed at the top of stair runs, except when stairs are set to the side of the path of travel.
- D. The installation shall be an integral part of the walking surface and only the actual domes shall project above the walking surface.
- E. Detectable warnings shall consist of an area of truncated domes that provide both visual and tactile cues to pedestrians who are about to enter into traffic. The warning area shall begin from the back of the curb and continue 2 ft. in the direction of pedestrian travel for the entire width of the walking surface.
- F. The product or method used for installing detectable warnings shall come with the following documents which shall be given to the Engineer prior to use.
 1. Manufacturer's certification stating the product is fully compliant with the ADAAG.
 2. Manufacturer's five year warranty.
 3. Manufacturer's specifications stating the required materials, equipment, and installation procedures.
- G. Detectable warnings shall also present a contrast in color from the surrounding surface.

30. ADA PARKING
- A. Accessible parking spaces serving a particular building shall be located on the shortest accessible route of travel from adjacent parking to an accessible entrance. When disabled parking is located such that the path of travel from the disabled parking spaces to a building or facility requires a disabled person to travel in to the public way, the entire path of travel including that portion in the public way, shall conform to all applicable code requirements.
 - B. Surface slopes of parking spaces for the physically disabled shall not exceed 1:50 or 2% in any direction.
 - C. Each accessible parking space reserved for the disabled shall be identified by a permanently affixed sign (71 Illinois Administrative Code, CH.I, & 400.310 SUBCHAPTER b).
 1. Signs shall be a minimum 12-in. x 18-in. x 18 ga. Cold rolled galvanized steel, treated for a baked enamel finish. Colors, text and design per 71 Illinois Administrative Code, CH.I, & 400.ILLUSTRATION C & D.
 2. Sign shall be vertically mounted on a post or wall at front center of the parking space, no more than 5 ft. horizontally from the front of the parking space and set a minimum of 4 ft. from finished grade to the bottom of the sign. (See 71 Illinois Administrative Code, CH.I, Section 400.310 (c) (7)) Sign shall be mounted on a single 2 in. round steel post with painted enamel finish. Post shall be supported by a precast concrete base.
 3. Signs shall be set plumb and level. Touch-up any abrasions to finish. Completely clean signs of all foreign matter.
 - D. A high quality yellow paint recommended by the paint manufacturer for pavement striping shall be used.

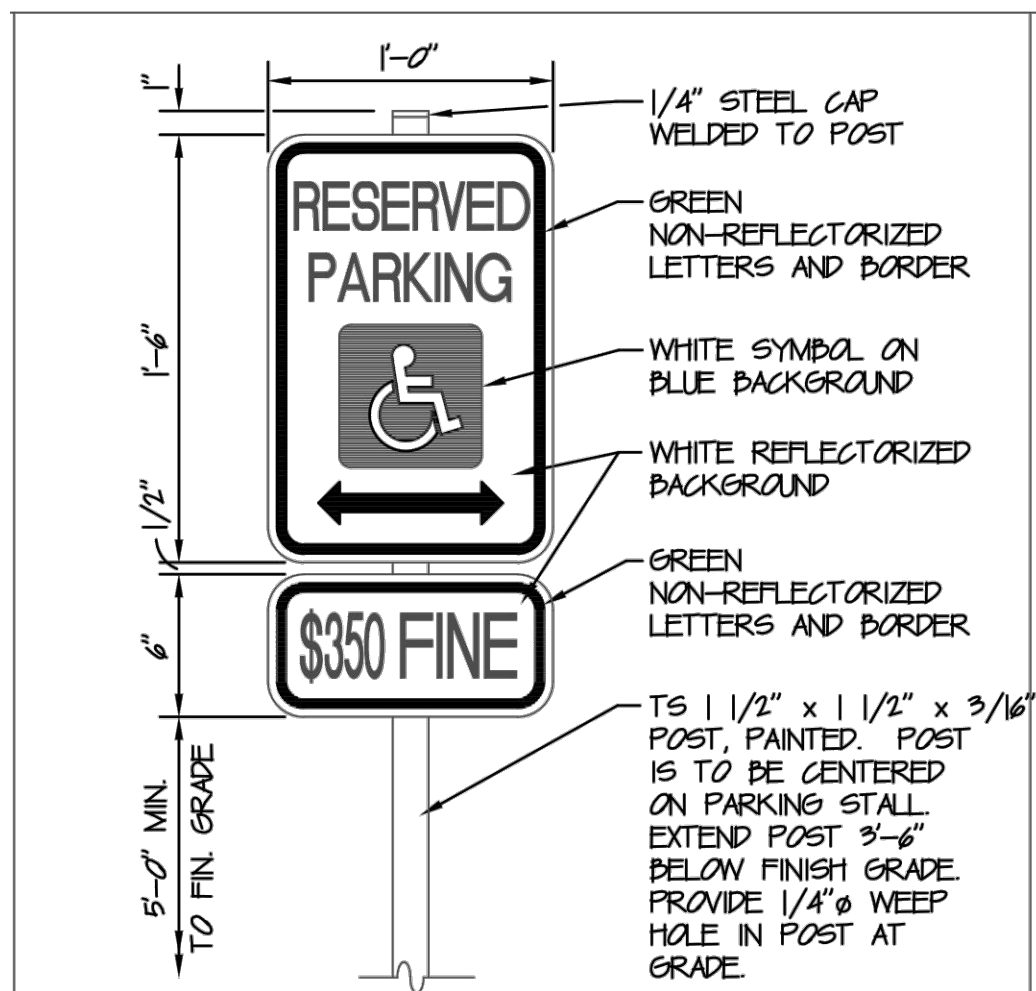
31. WALKS AND SIDEWALKS
- A. Walks and sidewalks subject to these regulations shall have a continuous common surface, not interrupted by step or by abrupt changes in level exceeding 1/2 in. and shall be a minimum of 48 in. in width.
 - B. Surface cross slopes shall not exceed 1:50 or 2%.
 - C. Surface with a slope of 5% gradient or greater shall be slip-resistant.
 - D. When the slope in the direction of travel of any walk exceeds 1:20 or 5%, it shall comply with the provisions for pedestrian ramps.
 - E. Abrupt changes in level along any accessible route shall not exceed 1/2 in. When changes in level do occur, they shall be beveled with a slope no greater than 1:2 except that level changes not exceeding 1/4 in. may be vertical.
 - F. When changes in levels greater than 1/2 in., they shall comply with the requirements for curb ramps.

- G. Walks shall be provided with a level area not less than 60 in. by 60 in. at a door or gate that swings toward the walk, and not less than 48 in. wide by 44 in. deep at a door or gate that swings away from the walk. Such walks shall extend 24 in. to the side of the strike edge of a door or gate that swings toward the walk.

32. RAMPS
- A. Pedestrian ramps serving primary entrances to building shall be a minimum 48 in. clear width, but not less than the width required for exits.
 - B. Top and bottom landings shall not be less than the ramp run leading to it and shall have a length of not less than 60 in. in the direction of the ramp run.
 - C. Other intermediate landings shall have a minimum dimension of 60 in. by 60 in.
 - D. Doors at the landing shall comply with 71 Illinois Administrative Code, CH.I, Section 400.310 (j) (5).
 - E. The width of the landing shall extend 24 in. past the strike edge of any door or gate for exterior ramps.
 - F. The cross-slope on a ramp or the slope across a ramp landing in any direction shall not exceed 1:50 or 2%.
 - G. The maximum slope shall be 1:12 or 8.33% and the maximum rise for any run shall be 30 in.
 - H. The surface of ramps shall be slip-resistant.
 - I. Handrails are required on ramps that have a ramp run rise greater than 6 in. or a horizontal projection greater than 72 in.
 - J. Handrails shall be placed on each side of ramp, shall be continuous the full length of the ramp, shall be 34 in. above the ramp surface, shall extend a minimum of 1 ft. beyond the top and bottom of the ramp, and the ends shall be returned.
 - K. Handrails projecting from a wall shall have a space of not less than 1-1/2 in. between the wall and the handrail.
 - L. The grip portion of the handrail shall be not less than 1-1/4 in. nor more than 2 in. in cross-sectional dimension, or the shape shall provide an equivalent gripping surface and all surfaces shall be smooth with no sharp corners.

STANDARDS

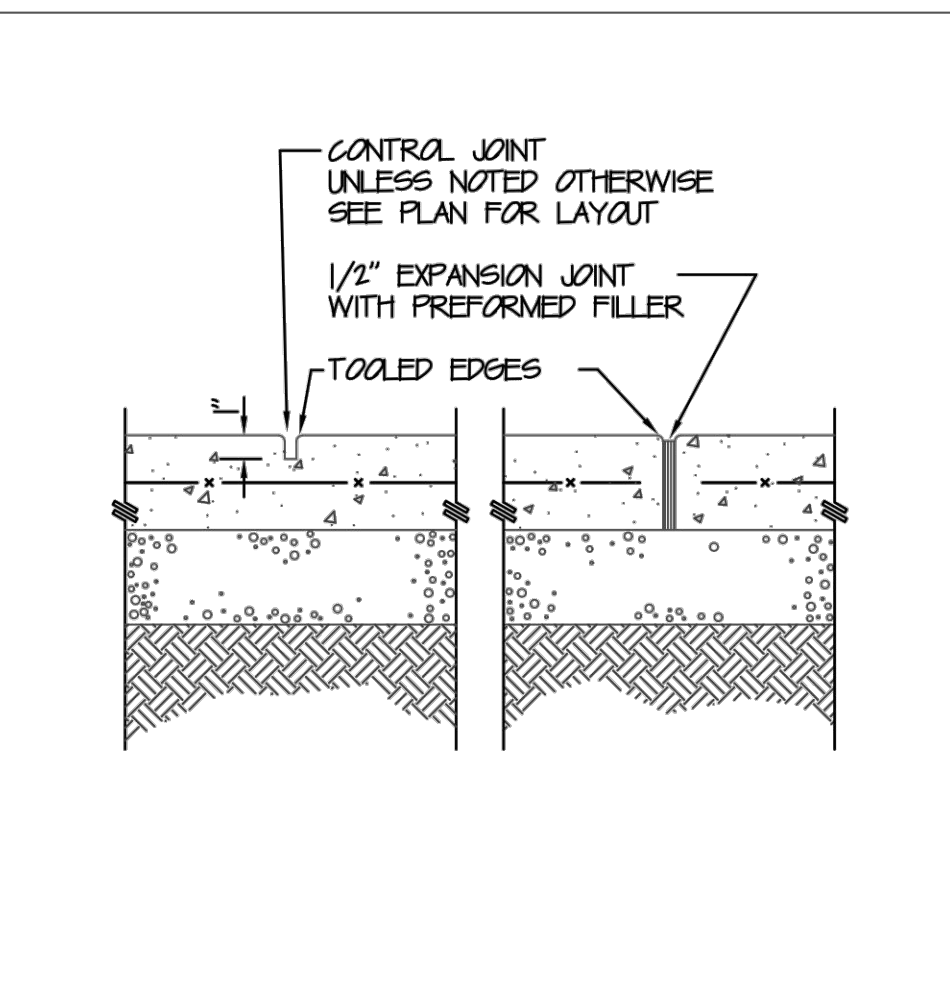
** SEE CURRENT I.D.O.T. HIGHWAY STANDARD REVISION STANDARDS CAN BE FOUND AT (<https://dot.illinois.gov/index>) "Resources" button; "Standards" button
 280001 Temporary Erosion Control Systems
 701901 Traffic Control Devices



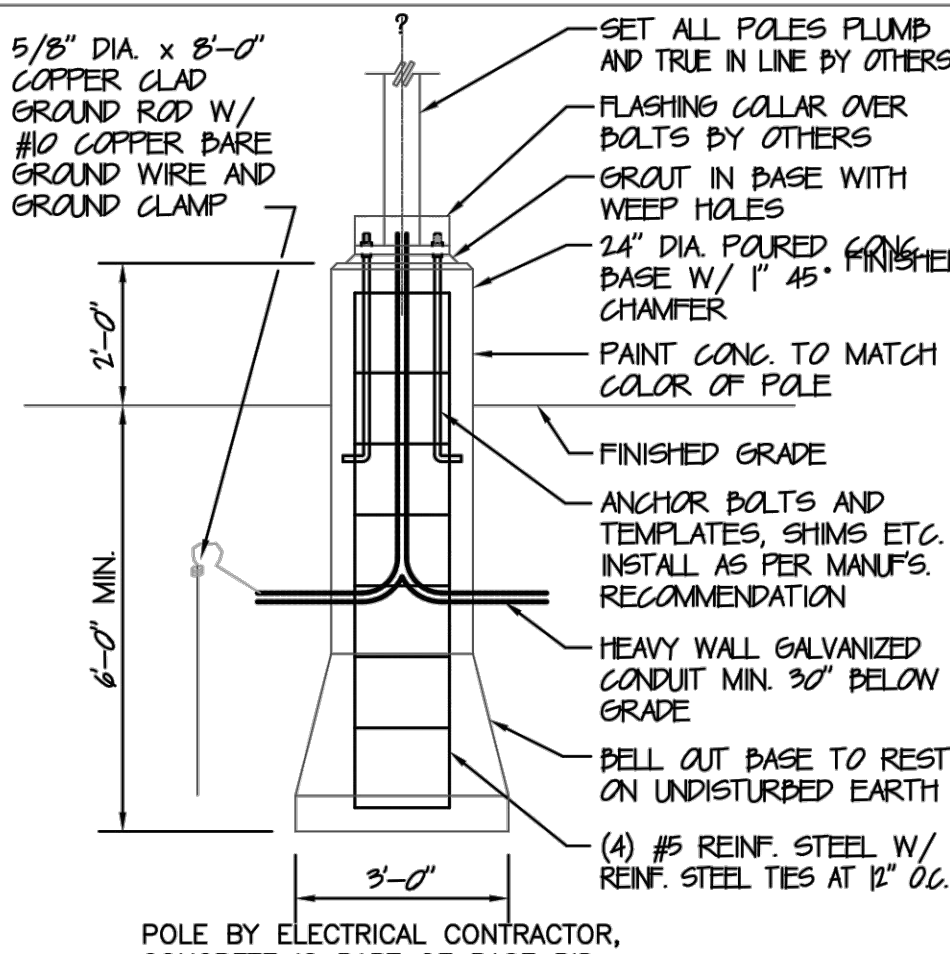
1 HANDICAP SIGN

- CURB NOTES:
1. CURBS SHALL HAVE CONTROL JOINTS AT 15'-0" O.C. AND EXPANSION JOINTS AT 60'-0" O.C. AND AT TANGENT POINTS OF ALL RADII OF LESS THAN 100'-0".
 2. CURB CONTROL JOINTS SHALL BE 2" DEEP SAW CUTS MADE WITHIN 48 HOURS OF PLACING CONCRETE. MAXIMUM SPACING TO BE 15'-0" O.C.
 3. CURB REINFORCING STEEL SHALL NOT RUN THRU EXPANSION JOINTS.
 4. LAP BARS 12" AT ALL SPLICES.
 5. REINFORCING STEEL DOWELS SHALL BE PROVIDED AT ALL CURB CONSTRUCTION JOINTS.
 6. EXPANSION JOINTS SHALL BE 1/2" WIDE PREFORMED FILLER, FULL DEPTH.
- PAVEMENT NOTES:
1. PAVEMENT SHALL BE 6" THICK P.C. CONCRETE W/ 15#/CY FIBER REINFORCING ON 4" COMPACTED GRANULAR BASE.
 2. CONTROL JOINTS SHALL BE SPACED AS TO OBTAIN APPROXIMATELY SQUARE SECTIONS W/ A MAXIMUM SPACING OF 10'-0" O.C. IF NOT SHOWN ON DRAWINGS.
 3. EXPANSION JOINTS SHALL BE SPACED 30'-0" O.C. AND WHERE PAVEMENT ABUTS A STRUCTURE.
- SIDEWALK NOTES:
1. SIDEWALKS SHALL BE 4" THICK P.C. CONCRETE W/ 15#/CY FIBER REINFORCING ON 2" MIN. COMPACTED GRANULAR BASE.
 2. CONTROL JOINTS SHALL BE SPACED AS TO OBTAIN APPROXIMATELY SQUARE SECTIONS. EXPANSION JOINTS WHERE PAVEMENT ABUTS A STRUCTURE.

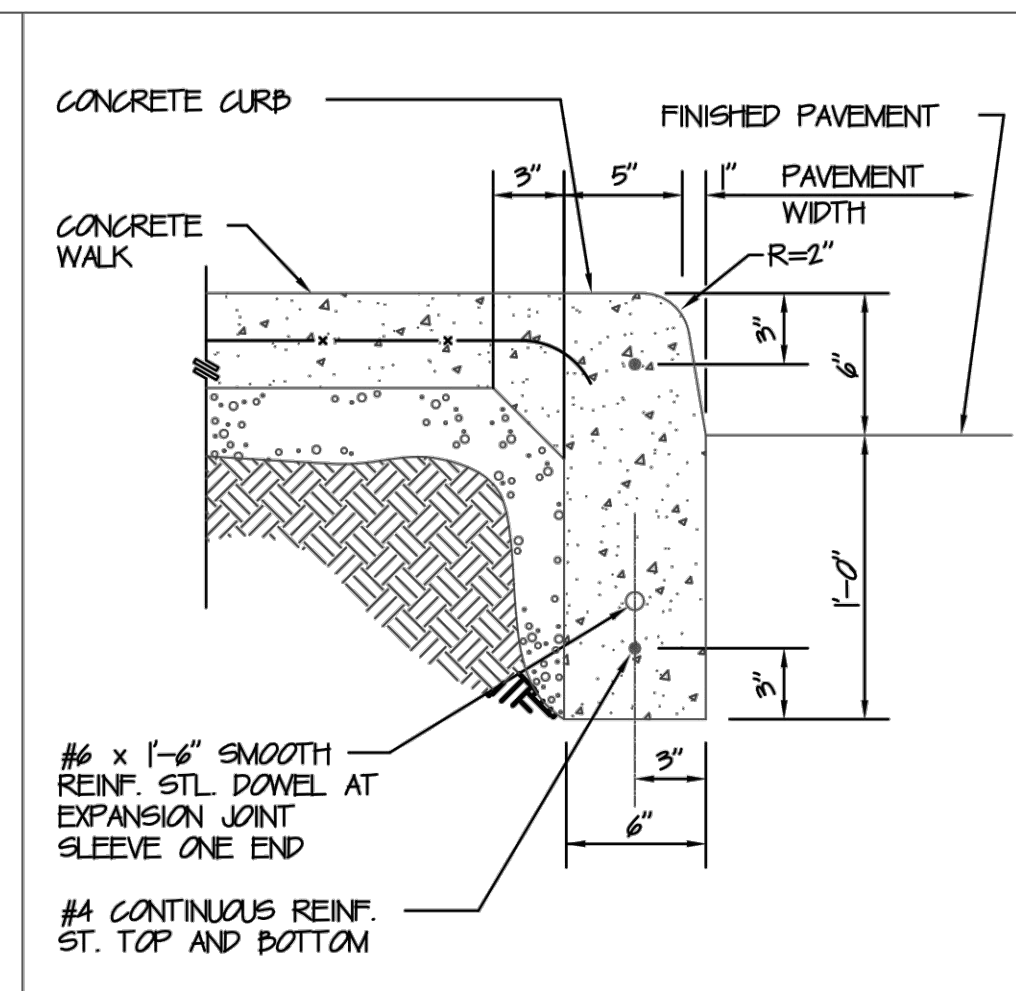
5 CONCRETE NOTES



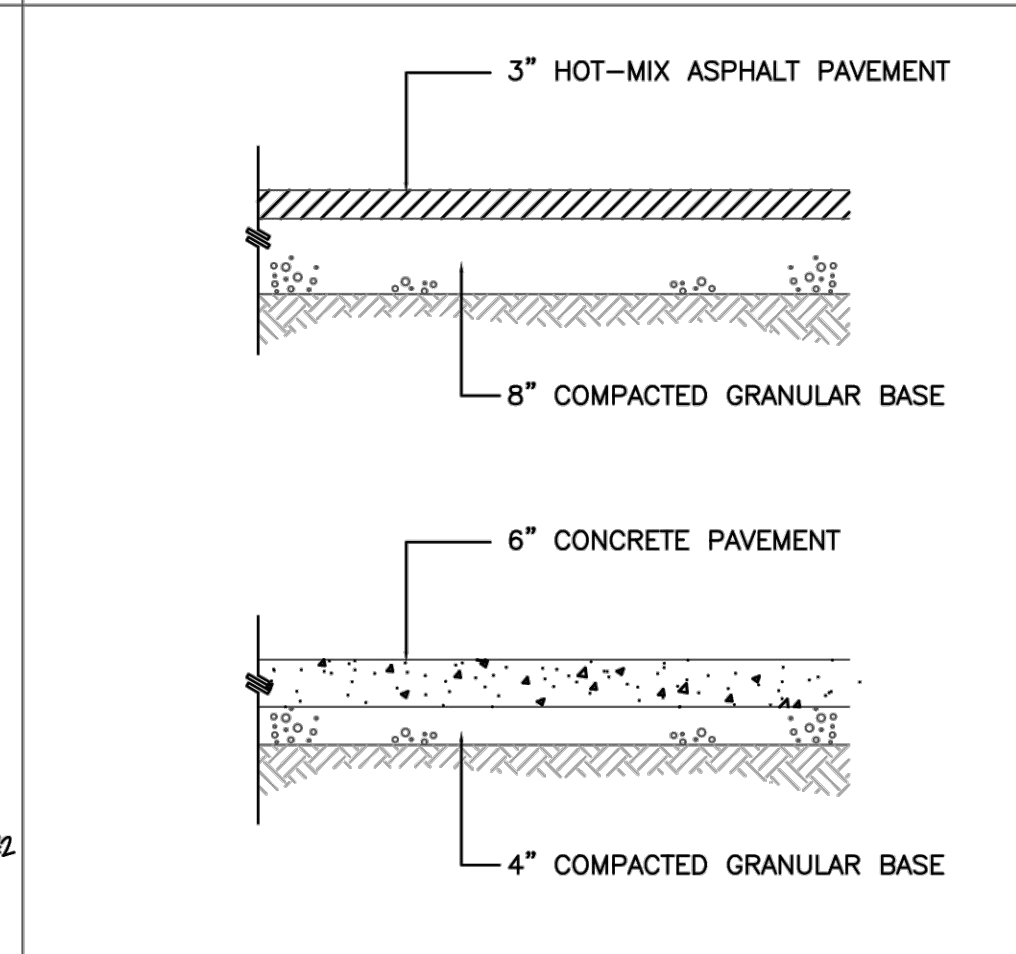
2 CONCRETE JOINTS



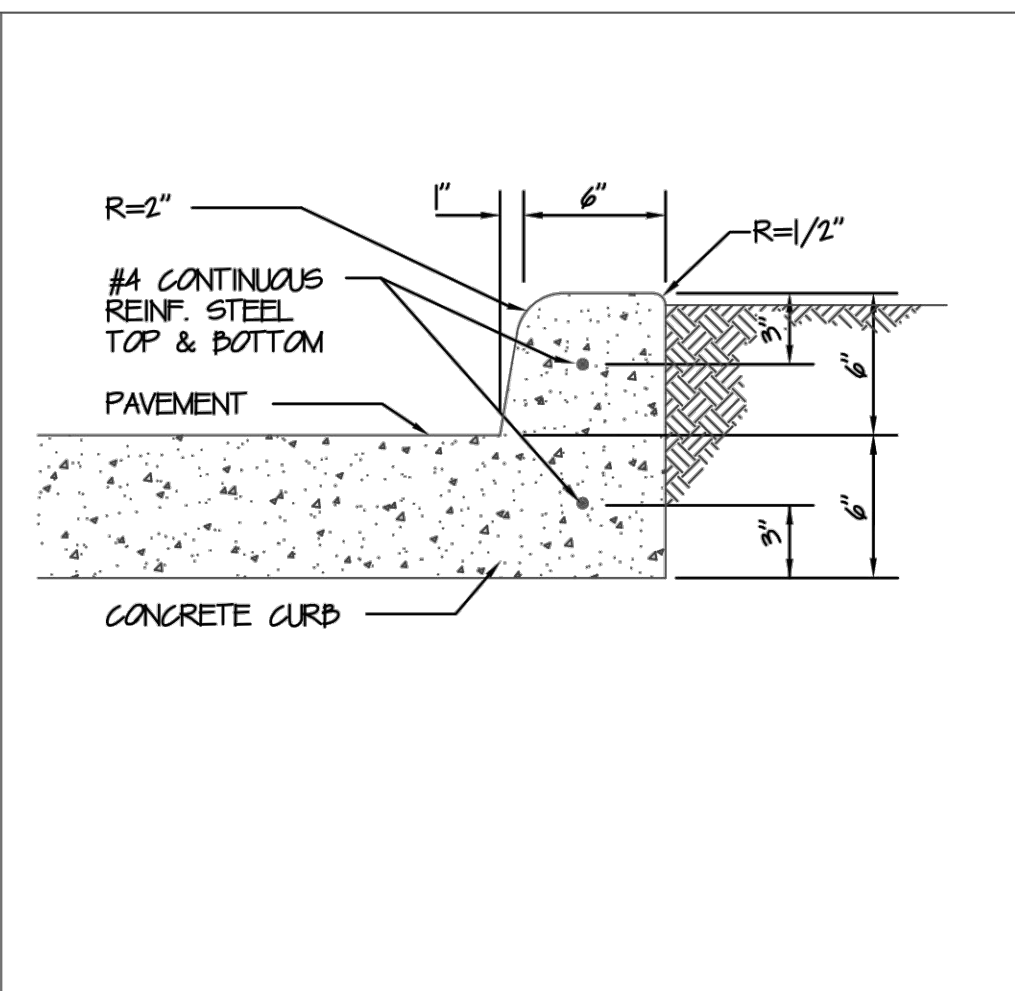
6 LIGHT POLE BASE



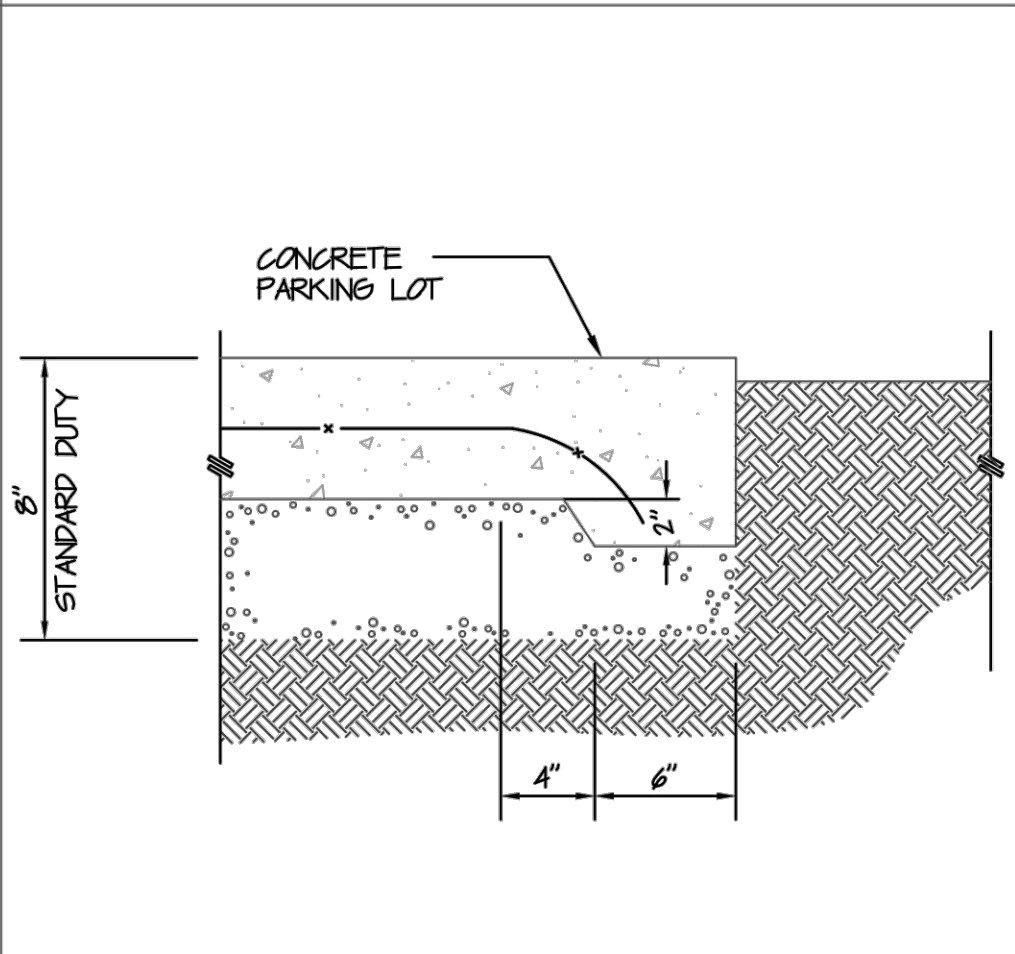
3 CURB AT WALK



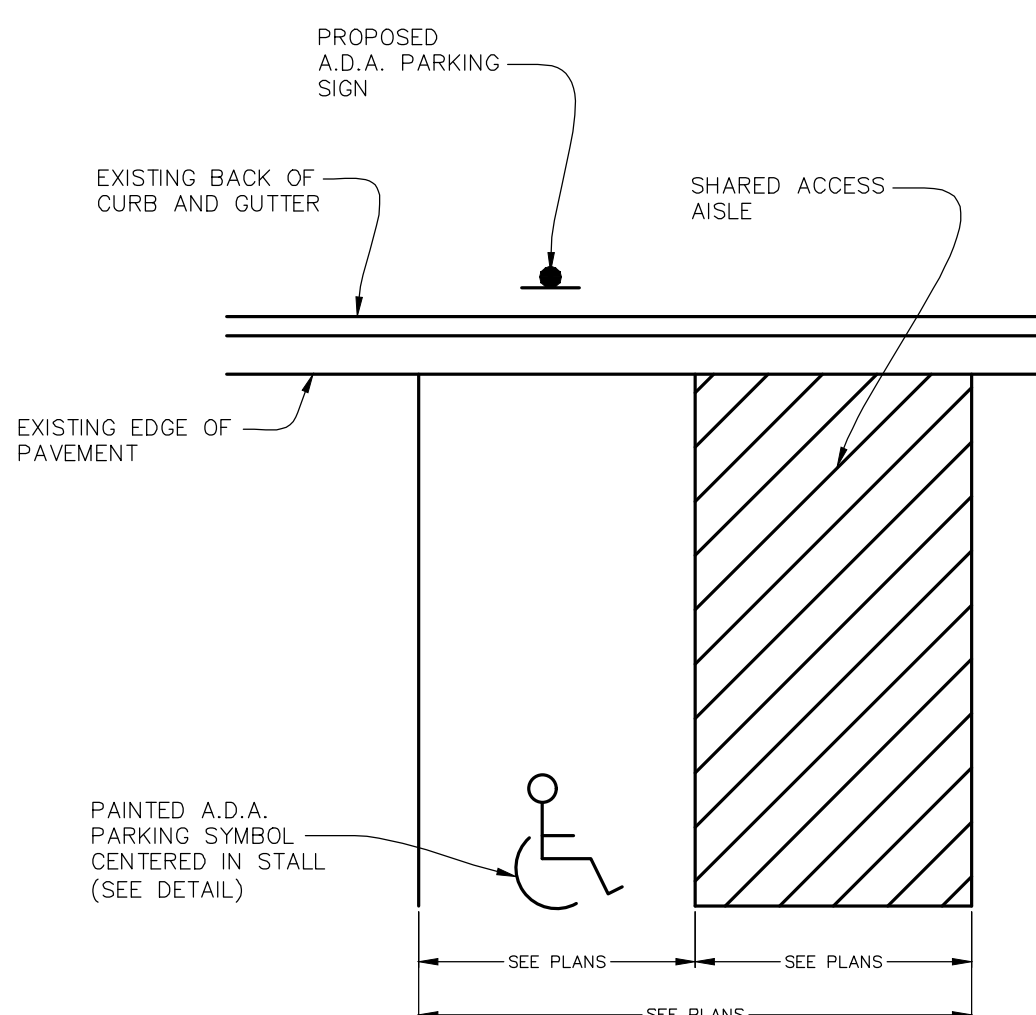
7 PAVEMENT SECTION



4 BARRIER CURB

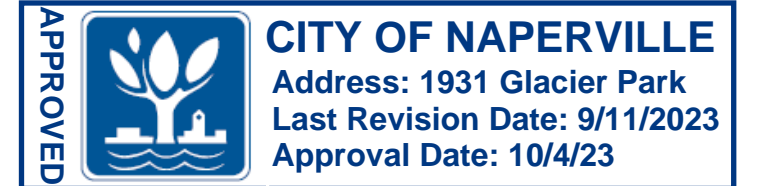


8 APRON EDGE



- NOTES:
- 1.) ALL PAVEMENT STRIPING SHALL BE VISIBILITY YELLOW.
 - 2.) MAXIMUM SLOPE WITHIN ALL A.D.A. PARKING STALLS SHALL NOT EXCEED 2.0% IN ANY DIRECTION.

A.D.A. PARKING LAYOUT
NOT TO SCALE



REVISIONS				
No.	DATE	DESCRIPTION	BY	
0	6-7-2023	PLAN SET SUBMITTAL	ECH	
1	8-11-2023	REVISED PER CITY OF NAPERVILLE REVIEW	ECH	
2	9-11-2023	REVISED TRANSFORMER LOCATION	DJZ	

DOCUMENTATION:				
PROJECT No.:	DATE:	FIELD BOOK:	DRAWN BY:	CHECKED BY:
20230186	3-11-2023	b:28-43 p:45-46	ech	DJZ

RT & A
Ruettiger, Tonelli & Associates, Inc.
 Surveyors • Engineers • Planners • Landscape Architects • G.I.S. Consultants
 129 CAPISTA DRIVE - SHOREWOOD, ILLINOIS 60404
 PH. (815) 744-6600 FAX (815) 744-0101
 website: www.ruettigertonelli.com

PROJECT TITLE:
SCOOTER'S COFFEE DRIVE-THRU
1931 GLAICER PARK
NAPERVILLE, ILLINOIS

DRAWING TITLE:
CONSTRUCTION NOTES AND DETAILS

DRAWING No.
 323-0186-C1

SCALE:
 AS NOTED

SHEET C7.00

N:\1\20230186\Engineering\Plan_Sheet\1 - Scooter's Coffee Drive Thru\Sheet C7.00.dwg, Layout1, 9/11/2023, 2:02:10 PM, Administrator

City of Naperville STANDARD DETAIL
SANITARY SEWER MANHOLE
REVISOR: 08/01/2018 SHEET 1 OF 1
390.01

City of Naperville STANDARD DETAIL
SANITARY MANHOLE - FRAME & COVER
REVISOR: 01/01/2013 SHEET 1 OF 1
390.06

City of Naperville STANDARD DETAIL
TRENCH SECTION FOR PVC PIPE
REVISOR: 01/01/2013 SHEET 1 OF 1
390.10

City of Naperville STANDARD DETAIL
SANITARY SEWER CLEANOUT
REVISOR: 11/15/2020 SHEET 1 OF 1
390.23

City of Naperville STANDARD DETAIL
STORM MANHOLE - TYPE A
REVISOR: 08/01/2018 SHEET 1 OF 1
290.01

City of Naperville STANDARD DETAIL
SERVICE TAP AND CONNECTION
EFFECTIVE: 7/17/2020 SHEET 1 OF 1
490.20

City of Naperville STANDARD DETAIL
UTILITY TRENCH PAVING SECTION (FLEXIBLE PAVEMENTS)
REVISOR: 01/01/2013 SHEET 1 OF 1
590.13

City of Naperville STANDARD DETAIL
B6.12 BARRIER CURB & GUTTER
REVISOR: 01/01/2013 SHEET 1 OF 1
590.20

City of Naperville STANDARD DETAIL
ACCESSIBLE PARKING SPACE MARKINGS
REVISOR: 01/01/2013 SHEET 4 OF 4
590.35

City of Naperville STANDARD DETAIL
FRAME & GRATE FOR B-6.12 CURB & GUTTER
REVISOR: 06/15/2015 SHEET 1 OF 1
290.11

UNDERDRAIN YARD INLET INSTALLATION
NOT TO SCALE

Call Before You Dig
JULIE
ORE-CALL SYSTEM
CONTACT JULIE at 811 or 800-852-0123
48 Hours (2 Working Days) BEFORE YOU DIG.
County, City/Township, Section & 1/4 Section No.

REVISIONS				
No.	DATE	DESCRIPTION	BY	
0	6-7-2023	PLAN SET SUBMITTAL	ECH	
1	8-11-2023	REVISED PER CITY OF NAPERVILLE REVIEW	ECH	
2	9-11-2023	REVISED TRANSFORMER LOCATION	DJZ	

DOCUMENTATION:
PROJECT No.: 20230186
DATE: 3-11-2023
FIELD BOOK: b:28-43 p:45-46
DRAWN BY: ech
CHECKED BY: DJZ

Ruettiger, Tonelli & Associates, Inc.
Surveyors • Engineers • Planners • Landscape Architects • G.I.S. Consultants
129 CAPISTA DRIVE - SHOREWOOD, ILLINOIS 60404
PH. (815) 744-6600 FAX (815) 744-0101
website: www.ruettigertonnelli.com

PROJECT TITLE:
SCOOTER'S COFFEE DRIVE-THRU
1931 GLAICER PARK
NAPERVILLE, ILLINOIS

DRAWING TITLE:
CONSTRUCTION NOTES AND DETAILS

DRAWING No.
323-0186-C1
SCALE:
AS NOTED
SHEET C8.00

WATER UTILITIES GENERAL NOTES

a. New water main valves, including pressure tap valves, adjacent to an existing water main, and existing water main valves shall only be operated by the City of Naperville, Department of Public Utilities CEE/CM Division personnel with 48-hour notice (Monday-Friday). Contact Naperville TED Business Group at 630-420-6082 for scheduling.

b. Any existing utility structures requiring adjustment or reconstruction shall be completed by the contractor to the satisfaction of the utility owner. Adjustments and/or reconstructions not called for on the plans shall be considered incidental to the contract. No more than a total of 12 inches of adjusting rings and/or 2 adjusting rings shall be allowed. All structure frames shall be flush with final grade.

c. Trees shall be installed a minimum of five (5) feet horizontally from underground electrical feeders, sanitary sewers, sanitary services, water mains, and water services. Trees shall be installed a minimum of ten (10) feet horizontally from utility structures and appurtenances, including, but not limited to, manholes, valve vaults, valve boxes and fire hydrants. No trees, shrubs or obstacles will be allowed 10' in front of, 5' on the sides, and 7' to the rear of the electrical transformer.

d. All retainer glands when required to restrain valves, fittings, hydrants, and pipe joints shall be mechanical joint wedge action type MEGALUG 1100 Series as manufactured by EBBA Iron, Inc. or UNI-FLANGE BLOCKBUSTER 1400 SERIES as manufactured by Ford Meter Box Co. and shall be for use on ductile iron pipe conforming to ANSI/AWWA C151/A21.51, for nominal pipe sizes 3" through 48".

e. All sanitary sewer piping shall be PVC pipe meeting the requirements of ASTM D-2241 with joints conforming to ASTM D-3139. All sanitary sewer fittings shall be PVC meeting the following requirements: 4" to 12" shall be Injection Molded Fittings meeting ASTM D-2241. Greater than 12" shall be Fabricated Fittings meeting ASTM D-2241 or C905. Minimum pressure rating shall be 150 psi.

f. The valves less than 16" shall be standard pattern, gate valves and shall have the name or mark of the manufacturer, size and working pressure plainly cast in raised letters on the valve body. Valves may be approved from one of the following manufacturers: American, Clow, Waterous or Kennedy.

g. Stainless steel nuts, bolts/T-bolts, and washers, Type 304 or better, will be required on all water main installations. This would apply to hydrants, tapping sleeves, valves, fittings, restraint, and other appurtenances buried or in valve vaults. Mechanical joints and restraint glands require 304 stainless steel T-bolts. An anti-seize compound shall be factory applied to nuts or bolts - any damage to this coating shall be repair with field applied approved anti-seize compound that is a molybdenum-base lubricant, Bostik Never-Seez or approved equal.

h. The contractor shall rotate and/or adjust any existing and/or new hydrant to the satisfaction of the Department of Public Utilities.

i. Water mains shall be subjected to a hydrostatic/leakage test in accordance with Naperville Standard Specifications. Test pressure shall be no less than 150 psi for a period of 4 hours and not vary by more than + 5 psi. during the test. The test gauge shall be approved by the City and shall be glycerin or oil filled, with a range of not more than 200 psi and increments not greater than 5 psi, 4 "minimum dial size. Water recovery test shall be completed at the end of the testing period to show actual leaking and that the water main did not have too much trapped air in the tested section.

j. The valves less than 16" shall be standard pattern, gate valves and shall have the name or mark of the manufacturer, size and working pressure plainly cast in raised letters on the valve body. Valves may be approved from one of the following manufacturers: American, Clow, Waterous or Kennedy.

k. Stainless steel nuts, bolts/T-bolts, and washers, Type 304 or better, will be required on all water main installations. This would apply to hydrants, tapping sleeves, valves, fittings, restraint, and other appurtenances buried or in valve vaults. Mechanical joints and restraint glands require 304 stainless steel T-bolts. An anti-seize compound shall be factory applied to nuts or bolts - any damage to this coating shall be repair with field applied approved anti-seize compound that is a molybdenum-base lubricant, Bostik Never-Seez or approved equal.

l. The contractor shall rotate and/or adjust any existing and/or new hydrant to the satisfaction of the Department of Public Utilities.

m. Water mains shall be subjected to a hydrostatic/leakage test in accordance with Naperville Standard Specifications. Test pressure shall be no less than 150 psi for a period of 4 hours and not vary by more than + 5 psi. during the test. The test gauge shall be approved by the City and shall be glycerin or oil filled, with a range of not more than 200 psi and increments not greater than 5 psi, 4 "minimum dial size. Water recovery test shall be completed at the end of the testing period to show actual leaking and that the water main did not have too much trapped air in the tested section.

WATER UTILITIES GENERAL NOTES (continued)

n. The City of Naperville Public Utilities does not guarantee that any valve or fitting in the existing water distribution system will hold against a hydrostatic/leakage test. The Contractor is solely responsible for providing and acceptable pressure test which shall include provisions around existing valves and fittings.

o. Fire hydrant should be bagged "NOT IN SERVICE" until all testing and disinfection has been completed and new water main section is service.

p. Sanitary sewer and water shall be constructed, tested, and placed into service in accordance with City of Naperville Standard Specification and Specifications for Water and Sewer Main Construction in Illinois, Latest Edition.

q. All valve boxes, vaults, hydrants, and manholes shall not be covered with construction debris and shall remain accessible to the respective utility company.

r. Water service line smaller than 3" shall be type K copper. If joints are required due to length of service, then only compression type coupling shall be permitted. No soldered or flared type joints are allowed.

s. All sanitary manholes shall be tested for leakage by vacuum testing. The manhole frame and adjusting rings shall be in place when testing. Any leaks shall be repaired from exterior of manhole - patching inside of manhole shall not be acceptable. A vacuum of 10" (254 mm) Hg shall be place on the manhole and the time shall be measured for the vacuum to drop to 9" (229 mm) Hg. The vacuum shall not drop below 9" (229 mm) Hg for the following time periods for each size of manhole:

- a) 48-inch diameter - 60 seconds
- b) 60-inch diameter - 75 seconds
- c) 72-inch diameter - 90 seconds
- d) 84-inch diameter - 105 seconds

Any manholes that fail the test shall be sealed and re-tested until acceptable.

t. The contractor shall provide internal televised inspection of all installed sanitary sewer, laterals, manholes and connections to the public system. Following completion of televising work, the contractor shall submit video recordings on DVD or flash drive along with a comprehensive televising report which will indicate the location, footages and nature of any defects. Prior to final acceptance, these defects shall be repaired to the satisfaction of the Water/Wastewater Utility and re-televised.

u. Contractor work hours are only allowed from 7:00 a.m. to 5:00 p.m., Monday through Saturday. No work shall be permitted on Sundays.

v. Sanitary pipes with less than 4 feet or more than 25 feet of cover shall be constructed of ductile iron piping (Class 50, minimum) and encased in polywrap.

w. All excavations more than 20 feet deep must be protected by a system designed by a registered professional engineer.

x. Contractor shall maintain 2' minimum clearance between existing utilities and new foundations and underground facilities. In areas where foundations and underground facilities are proposed adjacent to existing utilities, the contractor shall pot hole by vacuum excavation or hand excavation to locate the existing utility to verify minimum clearance requirement.

y. Fences shall be installed a minimum of 5 feet from any water or sanitary mains when running parallel with them. Where fences are installed crossing water or sanitary mains, the posts shall be located to have the main between them.

z. All brass components shall be certified to be lead free in compliance with NSF 61 and NSF 372 and identified with applicable markings.

DEPARTMENT OF PUBLIC UTILITIES – ELECTRIC GENERAL NOTES

The DPUE engineer for this project is Giovanni Hernandez. Please contact him at (630)-548-1212 with any questions regarding the electric service.

The developer SHALL supply the DPU-E engineer with catalog cuts for all CT/meter equipment (including but not limited to meter sockets, PT cabinet, CT cabinet, disconnect cabinet) and transformer pad/vault. The catalog cuts SHALL be approved by DPU-E prior to purchasing. The CT/meter cabinet SHALL be top fed. CT/meter equipment are long lead time items and DPU-E shall not be held responsible for delays resulting from non-compliant CT/meter equipment. Please provide name and contact information for Electrical Contractor for this project.

DPUE will provide, install, and maintain the transformers, all primary (15kV) cable and conduit, and the meters and instrument transformers. DPUE will also make the final connections in the transformers once the inspection is complete, and the building is ready to be energized. The developer is responsible for providing, installing, and maintaining the transformer pad/vault, all service lateral (480V) cable and conduit, the service entrance equipment including the CT/meter cabinet and all banked meter sockets.

The developer SHALL coordinate site construction with DPU-E to allow electric facilities to be installed prior paving and curbing. DPU-E requires 30 working days advance written notice prior to pavement installation to allow for the installation of electric facilities. Grade elevation must be within 4" of final grading before electric facilities can be installed.

Electric facilities SHALL be installed pursuant to Section 8-1C-3 of the City of Naperville Municipal Code, which requires a construction fee payment for installation of electric facilities.

At all times, the Customer shall be solely responsible for maintaining a suitable approach to the meter location, with no obstructions within four (4') feet of the front and two (2') feet of the sides of the Meter. Per NAPERVILLE SERVICE RULES AND POLICIES 22.2.F.

Clearance to transformer pad SHALL be 5' from all sides, 10' from front, and the area above must be completely clear of obstruction. No trees, shrubs, or other obstacles will be allowed within this area. Transformer pad SHALL maintain minimum clearance of 20' from egress points. Per DPUE specifications C10-2130 AND C30-0016.

DPU-E requires a minimum 5' of separation between its electric facilities and any fire hydrants storm drains, storm sewers, water mains, gas mains, etc. that run parallel to its facilities.

To have an existing service disconnected call the City Dispatch office at 630-420-6187. Please allow at least 24 hours notice. Meters and meter seals are to be removed only by DPU-E personnel. The location and type of new or replacement meter-related equipment must be pre-approved in writing by DPU-E. An electric service must be inspected by the Development Services Team electrical inspector prior to connection.

Label all meter sockets with the complete address in 1" letters using permanent stickers. In multiple meter banks, the complete address may be on the disconnect switch and the suite numbers on the meter sockets. The electrical service equipment will not pass inspection without appropriate address labeling.

Approval of metering equipment by DPU-E does not remove your responsibility to comply with the latest version of the National Electrical Code as adopted by the City of Naperville. Determination of compliance with the National Electrical Code will be made by the Transportation, Engineering and Development department.

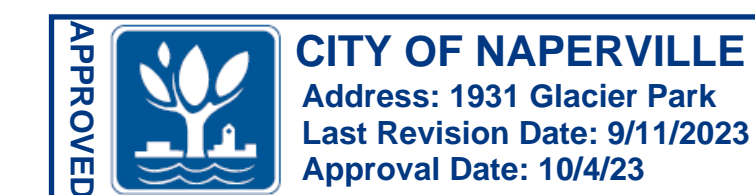
A customer's grounding conductor shall not be connected to DPU-E distribution equipment.

DPU-E will install and energize all meters in a multiple meter bank at one time, provided all meter sockets pass inspection. In the event of an incomplete installation, only the inspected and approved equipment shall be energized and a meter installed. Individual tenant permits will be required for installation of the other meters in the meter bank.

Due to supply chain issues DPU-E is experiencing long lead times (+400 days) on transformers. Please take this into consideration when planning construction.

The transformer must be shown on the site plan and should be located between 8' and 50' from commercial buildings. Meters, instrumental transformers, and main disconnect shall be located within 50' of the transformer and shall be installed on the exterior of the building. If the transformer will be located at a distance greater than 50', then the metering cabinet and main disconnect must be free standing and located between 10' and 15' of the transformer. The instrument transformers and main disconnect may be installed inside the building if the service entrance capacity is 1200 amps or greater. Meters shall be installed on the building exterior.

The developer is responsible for the construction and installation of a transformer pad and vault. The DPU-E engineer must be informed prior to the installation of the vault. A main disconnect or circuit breaker is required for DPU-E access in case of a need for service or in an emergency. DPU-E shall make the final connections of the customer's service to the transformer terminals. A minimum of eight feet of additional conductor length must be left on the customer's service cables.



R E V I S I O N S			
No.	DATE	DESCRIPTION	BY
0	6-7-2023	PLAN SET SUBMITTAL	ECH
1	8-11-2023	REVISED PER CITY OF NAPERVILLE REVIEW	ECH
2	9-11-2023	REVISED TRANSFORMER LOCATION	DJZ

DOCUMENTATION:

PROJECT No.: 20230186

DATE: 3-11-2023

FIELD BOOK: b:28-43 p:45-46

DRAWN BY: ech

CHECKED BY: DJZ



Ruettiger, Tonelli & Associates, Inc.
 Surveyors • Engineers • Planners • Landscape Architects • G.I.S. Consultants
 129 CAPISTA DRIVE - SHOREWOOD, ILLINOIS 60404
 PH. (815) 744-6600 FAX (815) 744-0101
 website: www.ruettigertonelli.com

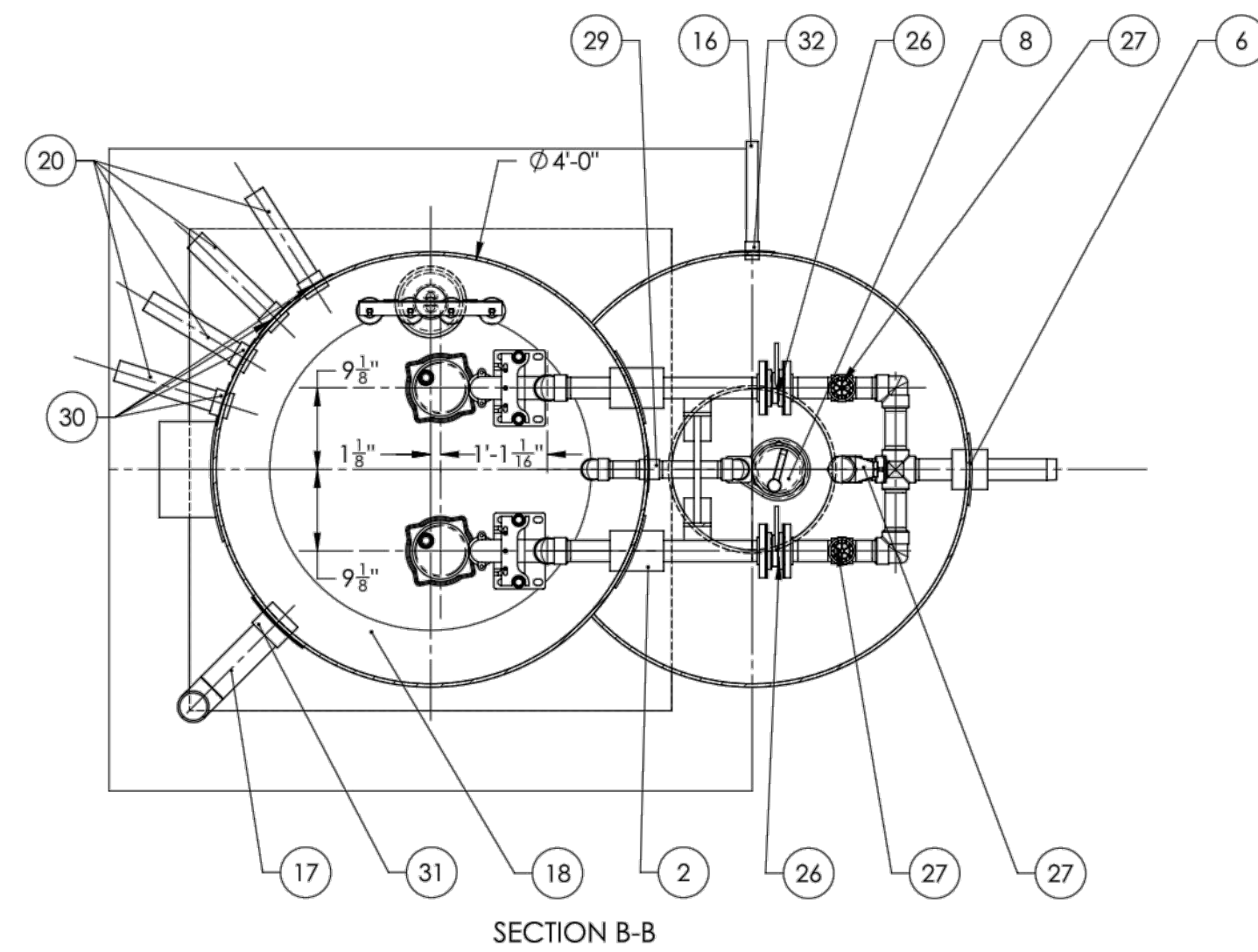
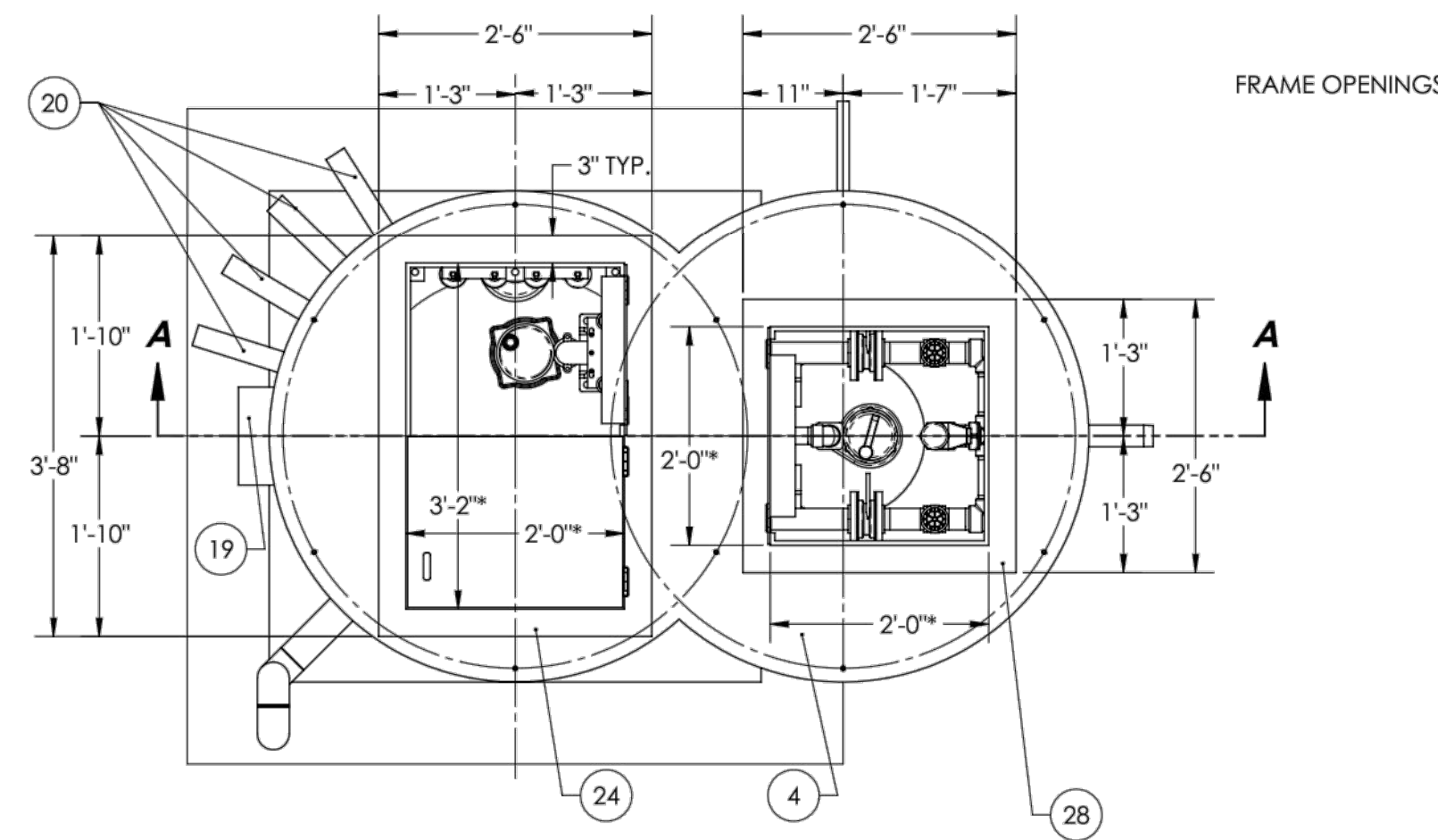
PROJECT TITLE:
SCOOTER'S COFFEE DRIVE-THRU
1931 GLAICER PARK
NAPERVILLE, ILLINOIS

DRAWING TITLE:
CONSTRUCTION NOTES
AND DETAILS

DRAWING No.
323-0186-C1

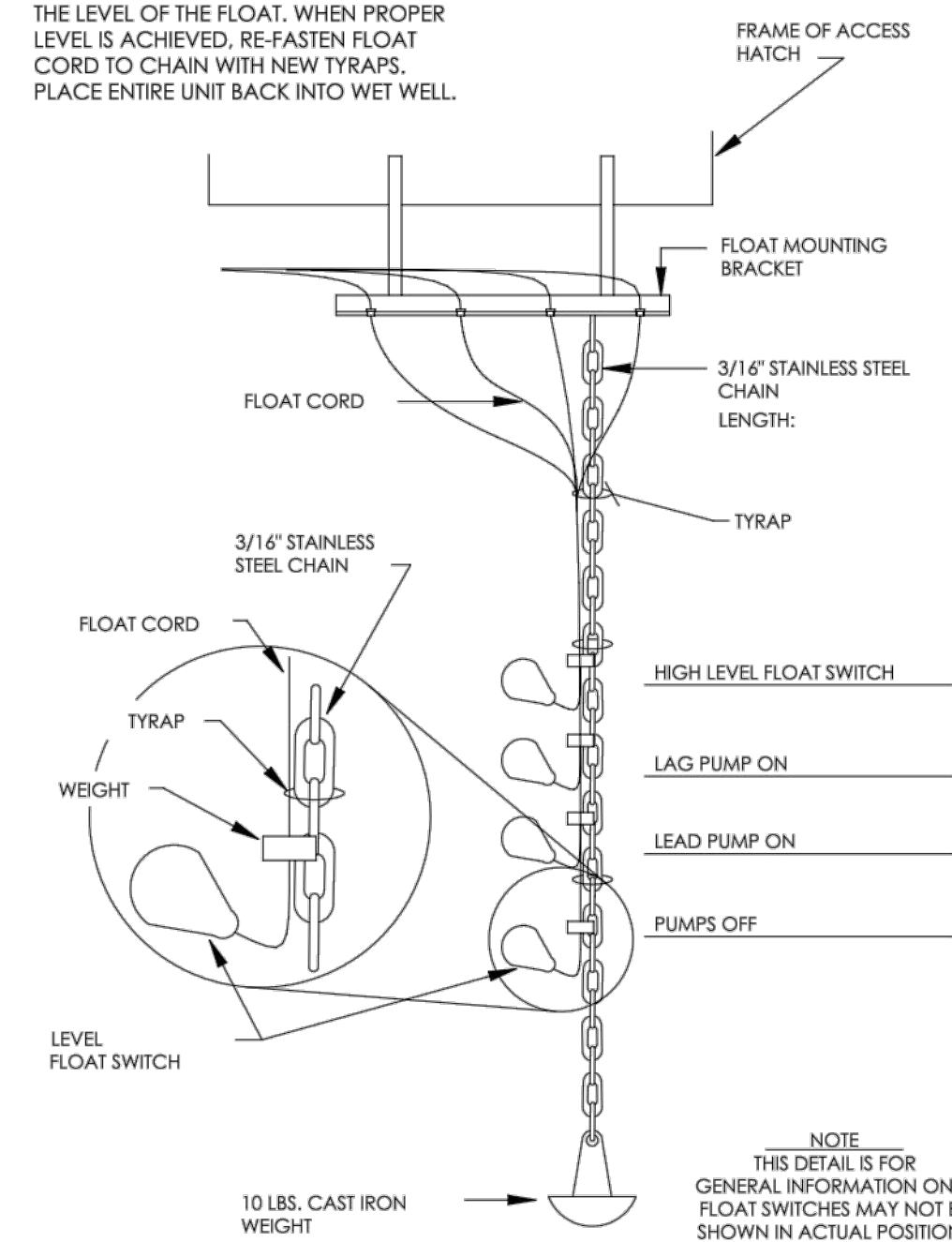
SCALE:
AS NOTED

SHEET C9.00



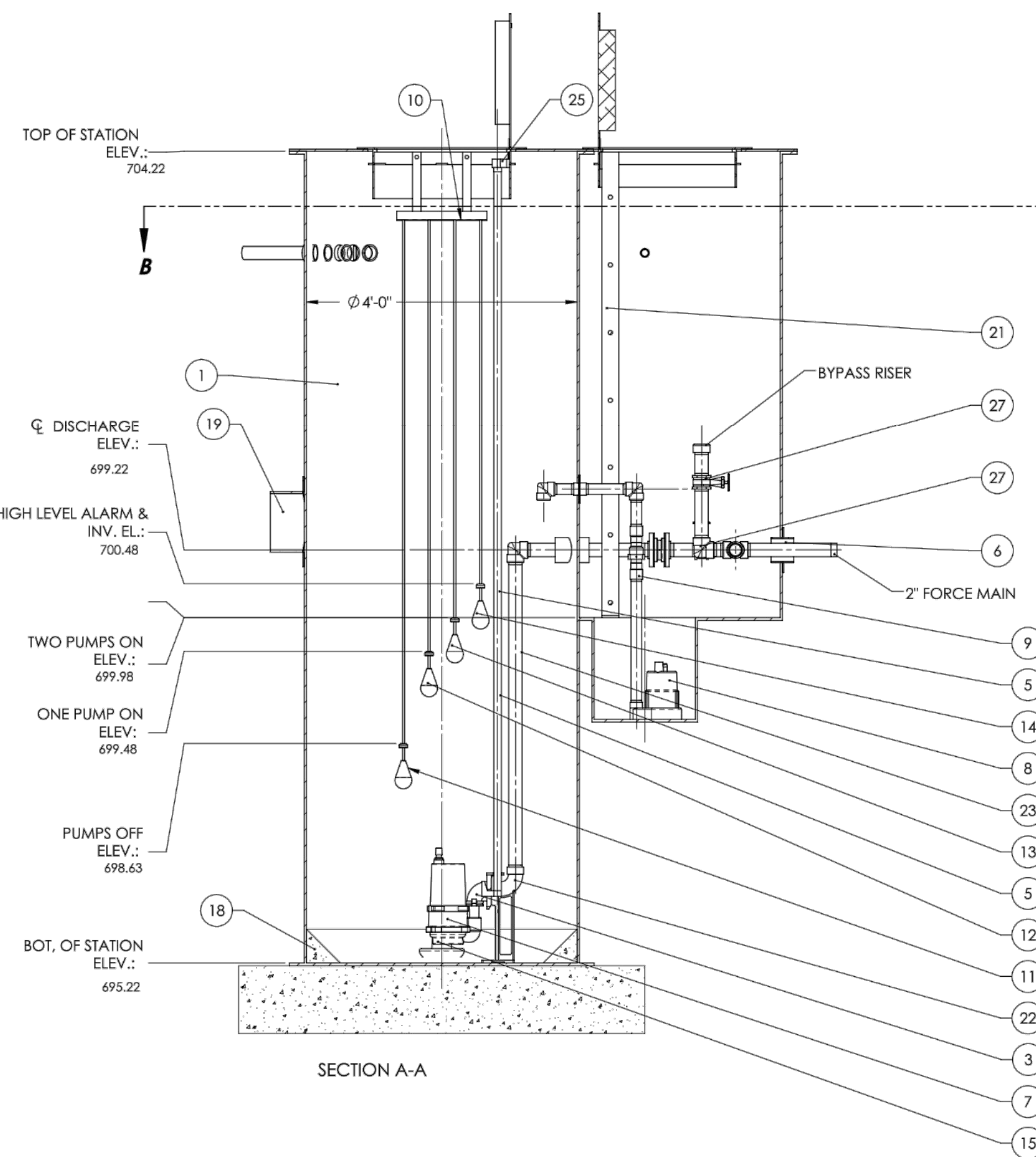
- NOTES:**
- THIS DRAWING IS PRELIMINARY LAYOUT ONLY. NOT FOR CONSTRUCTION. CONSTRUCTION DRAWINGS WILL BE FORWARDED UPON RECEIPT OF APPROVED SUBMITTALS.
 - SOME ITEMS NOT SHOWN FOR CLARITY.
 - CONTRACTOR/ENGINEER TO VERIFY SUCTION & DISCHARGE CONNECTION ORIENTATION.
 - ADEQUATE LIFTING POINTS TO BE PROVIDED.
 - CONTRACTOR TO FILL INLET HUB WITH GROUT AFTER INSTALLING FIELD PIPING.
 - ALL COMPRESSION COUPLINGS, EPC'S & FCA'S, TO BE RESTRAINED WITH A MINIMUM OF 2 CONTROL RODS WHEN REQUIRED.
 - LIFT STATION TO BE INSTALLED BY AN EXPERIENCED AND QUALIFIED CONTRACTOR.
 - ALL CONCRETE WORK IS THE RESPONSIBILITY OF THE CONTRACTOR.
 - CONTRACTOR AND/OR ENGINEER TO VERIFY ALL DIMENSIONS, ELEVATIONS, PIPING LAYOUT, AND ORIENTATION OF INLET (S), DISCHARGE AND CONDUIT (S).
 - ELECTRICAL COMPONENTS IN THE WET WELL SHALL BE RATED FOR CLASS I, DIV. 1, GROUP C & D LOCATIONS.
 - CONDUITS ARE AS FOLLOWS: (1) 2" FOR SENSOR CABELS, (1) 2" FOR LEVEL SWITCHES, (1) 2" FOR EACH PUMP POWER CORD & (1) 1" FOR VALVE VAULT SUMP PUMP POWER.
 - CONTRACTOR TO ORDER CONTROL AND POWER CORDS OF SUFFICIENT LENGTH TO REACH CONTROL PANEL FROM POINT OF ORIGIN ON PUMPS **WITHOUT SPLICING**.

WHEN CHANGING FLOAT LEVELS, PULL CHAIN, ANCHOR, AND FLOATS OUT OF WET WELL. CUT NECESSARY TYRAPS AND READJUST THE LEVEL OF THE FLOAT. WHEN PROPER LEVEL IS ACHIEVED, RE-FASTEN FLOAT CORD TO CHAIN WITH NEW TYRAPS. PLACE ENTIRE UNIT BACK INTO WET WELL.



NOTE: THIS DETAIL IS FOR GENERAL INFORMATION ONLY. FLOAT SWITCHES MAY NOT BE SHOWN IN ACTUAL POSITIONS.

ITEM NO.	PART NUMBER	DESCRIPTION	QTY.
1	FIBERGLASS WET WELL & VALVE VAULT	4'-0" DIA. x 9'-0" DEEP	1
2	LINK SEAL SLEEVE FOR 2" SCHED. 40		2
3	BERS SEALING FLANGE ASSEMBLY	2" SEALING FLANGE	2
4	LIFT STATION COVER	3/8" THK. STL. PLT.	1
5	1" GUIDE RAIL	SCHED. 40 STAINLESS STEEL PIPE	4
6	LINK SEAL SLEEVE FOR 2" SCHED. 40 STATION DISCHARGE		1
7	HPGF300	SEWAGE GRINDER PUMP	2
8	SUMP PUMP		1
9	1.50" CHECK VALVE		1
10	FLOAT MOUNTING BRACKET	STAINLESS STEEL TO BE SHIPPED LOOSE - CONTRACTOR TO INSTALL IN FIELD	1
11	FLOAT: OFF LEVEL	METROPOLITAN SUBMERSIBLE LEVEL SWITCH	1
12	FLOAT: ONE PUMP ON	METROPOLITAN SUBMERSIBLE LEVEL SWITCH	1
13	FLOAT: TWO PUMPS ON	METROPOLITAN SUBMERSIBLE LEVEL SWITCH	1
14	FLOAT: ALARM LEVEL	METROPOLITAN SUBMERSIBLE LEVEL SWITCH	1
15	ANCHOR	10lbs CAST IRON, WITH STAINLESS STEEL CHAIN FOR LEVEL CONTROL MOUNTING	1
16	1 RIGID CONDUIT	BY OTHERS	1
17	3" SCHED. 80 PVC VENT PIPING w/ BUG SCREENING	BY OTHERS	1
18	CONCRETE FILLET - BY OTHERS	SLOPE 1:1	1
19	INLET HUB FOR 4" PVC PIPING	SUPPLIED LOOSE, CONTRACTOR TO LOCATE & INSTALL IN FIELD	1
20	2" CONDUIT	BY OTHERS	4
21	LADDER	ALUMINUM LADDER	1
22	CONERY BERS 0200 BASE ELBOW		2
23	2" RISER	ANSI CLASS 150 FLANGES, BLACK STEEL PIPE	2
24	APD300-24x38	DUPLEX ALUMINUM ACCESS HATCH	1
25	UPPER GUIDE RAIL SUPPORT		2
26	2" WAFER CHECK VALVE		2
27	2" PLUG VALVE		3
28	APS300-24x24	ALUMINUM ACCESS HATCH	1
29	1.5" COUPLING - 48" ID	NPT COUPLING	1
30	2" COUPLING - 48" ID	NPT COUPLING	4
31	3" COUPLING - 48" ID		1
32	1" COUPLING - 48" ID	CONDUIT COUPLINGS	1



THE INFORMATION CONTAINED IN THIS DRAWING IS THE SOLE PROPERTY OF METROPOLITAN INDUSTRIES, INC. ANY REPRODUCTION IN PART OR AS A WHOLE WITHOUT THE WRITTEN PERMISSION OF METROPOLITAN INDUSTRIES, INC. IS PROHIBITED.

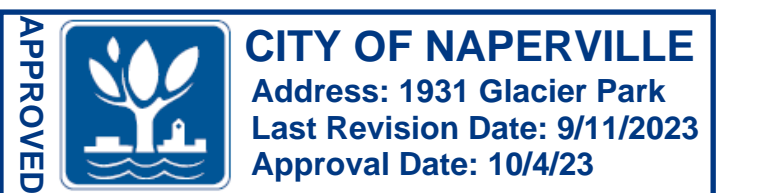
DATE	BY	REVISION	DATE	BY	REVISION
8-22-23	BY	Elevations Revised per 8-11-23 Plans			

METROPOLITAN INDUSTRIES, INC.
 37 FORESTWOOD DR. ROMEOVILLE, ILLINOIS 60446
 (815)886-9200 FAX (815)886-4573
 PUMPS - CONTROLS - SYSTEMS

TITLE: DUPLEX METRORAIL FIBERGLASS GRINDER LIFT STATION

PROJECT: SANITARY LIFT STATION
 Scotters Coffee
 Naperville, IL.

SHEET 1 OF 1



© Metropolitan Industries, Inc. 2016



REVISIONS							
No.	DATE	DESCRIPTION	BY	No.	DATE	DESCRIPTION	BY
0	6-7-2023	PLAN SET SUBMITTAL	ECH				
1	8-11-2023	REVISED PER CITY OF NAPERVILLE REVIEW	ECH				
2	9-11-2023	REVISED TRANSFORMER LOCATION	DJZ				

RT & A
Ruettiger, Tonelli & Associates, Inc.
 Surveyors • Engineers • Planners • Landscape Architects • G.I.S. Consultants
 129 CAPISTA DRIVE - SHOREWOOD, ILLINOIS 60404
 PH. (815) 744-6600 FAX (815) 744-0101
 website: www.ruettigertonelli.com

PROJECT TITLE: SCOOTER'S COFFEE DRIVE-THRU
1931 GLAICER PARK
NAPERVILLE, ILLINOIS

DRAWING TITLE: CONSTRUCTION NOTES AND DETAILS

DRAWING No. 323-0186-C1
SCALE: AS NOTED
SHEET C-10.00