

5

4

3

2

1

PLANT LIST

LANDSCAPE ORDINANCE CHART

COUNT	MARK	BOTANICAL NAME	COMMON NAME	SIZE	NOTES
SHADE TREES					
8	GYM-D	GYMNOCLADUS DIOICUS 'ESPRESSO'	ESPRESSO KENTUCKY COFFEE TREE	2 1/2"-3" CAL.	B&B
4	OST-V	OSTRYA VIRGINIANA	AMERICAN HOPHORNBEAN	2 1/2"-3" CAL.	B&B
10	PLA-A	PLATANUS x ACERIFOLIA 'BLOODGOOD'	BLOODGOOD LONDON PLANETREE	2 1/2"-3" CAL.	B&B
6	QUE-I	QUERCUS IMBRICARIA	SHINGLE OAK	2 1/2"-3" CAL.	B&B
6	QUE-S	QUERCUS SHUMARDII	SHUMARD OAK	2 1/2"-3" CAL.	B&B
10	TAX-D	TAXODIUM DISTICHUM	BALD CYRESS	2 1/2"-3" CAL.	B&B
ORNAMENTAL TREES					
3	HAL-T	HALESIA CAROLINA 'JERSEY BELLE'	CAROLINA SILVERBELL 'JERSEY BELLE'	1 1/2"-2" CAL.	B&B
SHRUBS					
16	CEP-O	CEPHALANTHUS OCCIDENTALIS	BUTTONBUSH	24"-30"	
13	COR-S	CORNUS SERICEA 'KELSEY'	KELSEY'S DWARF RED OSIER DOGWOOD	18"-24"	
27	FOT-G	FOTHERGILLA GARDENII	DWARF FOTHERGILLA	18"-24"	
35	POT-F	POTENTILLA FRUTICOSA 'GOLDFINGER'	GOLD FINGER POTENTILLA	18"-24"	
POND PLANTINGS					
582	PLAN NOTE 2	ASCLEPIAS INCARNATA	SWAMP MILKWEED	PLUG	PLANT ON A 2' GRID. MIX PLUGS RANDOMLY TO ACHIEVE EVEN DISTRIBUTION OF SPECIES. IF SPECIFIC SPECIES ARE NOT AVAILABLE, A COMPARABLE SPECIES FROM THE WETLAND SEED MIX MAY BE SUBSTITUTED. SUBMIT SUBSTITUTION REQUEST.
582	PLAN NOTE 2	CAREX HYSTERICINA	PORCUPINE SEDGE	PLUG	
582	PLAN NOTE 2	CAREX VULPINOIDEA	FOX SEDGE	PLUG	
582	PLAN NOTE 2	MONARDA FISTULOSA	WILD BERGAMOT	PLUG	
582	PLAN NOTE 2	PANICUM VIRGATUM	SWITCH GRASS	PLUG	
582	PLAN NOTE 2	RUDBECKIA TRILOBA	BROWN-EYED SUSAN	PLUG	
582	PLAN NOTE 2	SCIRPUS ATROVIRENS	DARK GREEN BULRUSH	PLUG	

ORDINANCE SECTION	DESCRIPTION	MEASUREMENT	PLANTINGS REQUIRED	PLANTINGS PROVIDED
5-10-3.3.2.3.	PARKWAY TREES- PARKWAY-THE UNPAVED PORTION OF A PUBLIC ROAD OR STREET RIGHT-OF-WAY ABUTTING A PARCEL. PARKWAY TREES SHALL BE EVENLY SPACED AT NOT MORE THAN FORTY (40) FEET APART AND NOT LESS THAN FOUR (4) FEET FROM THE ESTABLISHED SIDEWALK LINE OF SAID STREET. PERMIT REQUIRED. THE APPLICATION SHALL BE REVIEWED AND THE PERMIT SHALL BE ISSUED BY THE DEPARTMENT OF PUBLIC WORKS.	APPROX 580 LF OF FRONTAGE ON PUBLIC ROW	15 TREES	15 TREES
5-10-3.5.2.1	PERIMETER PARKING LOT LANDSCAPING: A MINIMUM FIVE-FOOT WIDE LANDSCAPE AREA SHALL BE PROVIDED AROUND THAT PART OF THE PERIMETER OF ALL PARKING LOTS WHICH ABUT ANOTHER PARCEL OR THE PUBLIC RIGHT-OF-WAY.	5' WIDE AREA PROVIDED- EXCLUDING NORTH DRIVE/ PROPERTY LINE- FOR WHICH A PUD DEVIATION IS REQUESTED.	SEE 5.2.4.2	SEE 5.2.4.2
5-10-3.5.2.4.2.	PARKING PERIMETER LANDSCAPING REAR OR INTERIOR YARDS BY NON-RESIDENTIAL- ABUTTING NONRESIDENTIAL PROPERTY: WHERE A PARKING LOT ABUTS A PROPERTY ZONED FOR NONRESIDENTIAL USE, LANDSCAPING SHALL BE PROVIDED ACROSS FIFTY PERCENT (50%) OF THE PARKING LOT TO A MINIMUM HEIGHT OF THIRTY (30) INCHES. SUCH LANDSCAPING SHALL CONSIST OF EVERGREEN OR DECIDUOUS SHRUBBERY AND HEDGES SPACED AT A MAXIMUM OF FOUR (4) FEET ON CENTER. SHADE TREES OF A MINIMUM OF TWO AND ONE-HALF (2 1/2) INCHES IN DIAMETER AS MEASURED SIX (6) INCHES ABOVE THE ESTABLISHED GROUND LEVEL SHALL BE SPACED AT THE EQUIVALENT OF NOT MORE THAN SEVENTY (70) FEET APART ALONG THAT PORTION OF THE PARKING LOT ABUTTING THE NONRESIDENTIAL PROPERTY, EXCLUSIVE OF ACCESS DRIVES, PERPENDICULAR TO THE LOT LINES.	238 LF W LOT EDGE - EXCLUDING NORTH PROPERTY LINE - (SEE 5.2.1) AND EAST LOT LINE WHICH IS EXISTING STORAGE FACILITY)	119 LF=50% OF PARKING LOT. 25 SHRUBS AT 4' O.C. AND 3 TREES	9 TREES AND 30 SHRUBS -EXTRA PROVIDED TO ENHANCE ALTERNATE FOUNDATION LANDSCAPING.
5-10-3.4.1.	LOT PERIMETER TREES SHADE TREES A MINIMUM OF TWO AND ONE-HALF (2 1/2) INCHES IN DIAMETER AS MEASURED SIX (6) INCHES ABOVE THE ESTABLISHED GROUND LEVEL AND/OR EVERGREEN TREES A MINIMUM OF SIX (6) FEET IN HEIGHT SHALL BE SPACED AT THE EQUIVALENT OF NOT MORE THAN SEVENTY (70) FEET APART ALONG ALL PROPERTY LINES, EXCLUSIVE OF ACCESS DRIVES PERPENDICULAR TO THE LOT LINES.	1500 LF EXCLUDING ENTRYS	22 TREES	20 NEW TREES AND 5 EXISTING TREES
5-10-3.4.2.1.	FOUNDATION LANDSCAPING: FOUNDATION PLANTINGS SHALL BE LOCATED ADJACENT TO ALL SIDES OF BUILDINGS WHICH FACE A PUBLIC RIGHT-OF-WAY OR INTERNAL STREET ACCESS DRIVE, OTHER THAN SINGLE-FAMILY ATTACHED AND DETACHED DEVELOPMENTS AND PROPERTIES ZONED B4 OR B5, IN A PLANTING BED A MINIMUM OF TWO (2) FEET IN WIDTH. FOUNDATION PLANTINGS BEDS SHALL BE 2 FEET IN WIDTH, HOWEVER, FOUNDATION PLANTINGS SHALL CONSIST OF A MINIMUM RATIO OF ONE PLANT FOR EVERY 3 LINEAR FEET OF BUILDING LENGTH. A COMBINATION OF DECIDUOUS SHRUBS, EVER-GREENS, FLOWERS, ORNAMENTAL GRASSES AND OTHER NATIVE GROUND COVERS SHOULD BE USED. ALL PLANTING AREAS WHICH ARE NOT OCCUPIED BY TREES, SHRUBS, FLOWERS, GROUND COVER, ORNAMENTAL GRASSES OR MULCH SHALL BE SODDED OR CONTAIN DECORATIVE LANDSCAPE STONE APPROVED BY THE ZONING ADMINISTRATOR.	31.5 LF X 3 BUILDINGS 95 LF INCLUDING DOORWAYS	32 SHRUBS AT 3' O.C.	32 SHRUBS PROVIDED. ALTERNATE LOCATIONS SHOWN ALLOWS THE STORAGE FACILITY TO FUNCTION BY PLACING FOUNDATION PLANTINGS AT THE PERIMETER OF THE NEW COMPLEX OF BUILDINGS WHERE THEY WILL BE MOST VISIBLE TO FROM OGDEN AVE.

WETLAND SEED MIX

SEED AT A RATE OF 48 OZ/ ACRES
SEED MIX IS PREMIXED FROM ILLINOIS DNR. FOR MORE INFORMATION REFER TO SPECIFICATIONS

- BIG BLUESTEM (*ANDROPOGON GERARDII*)
- BLACK-EYED SUSAN (*RUDBECKIA HIRTA*)
- BLUE FLAG IRIS (*IRIS VERSICOLOR*)
- BLUE VERVAIN (*VERBENA HASTATA*)
- BROWN-EYED SUSAN (*RUDBECKIA TRILOBA*)
- SHOWY TICK TREFOIL (*DESMODIUM CANADENSE*)
- NODDING WILD RYE (*ELYMUS CANADENSIS*)
- COMMON IRONWEED (*VERNONIA FASCICULATE*)
- CULVER'S-ROOT (*VERONICASTRUM VIRGINICUM*)
- CUP-PLANT (*SILPHIUM PERFOLIATUM*)
- DARK GREEN BULRUSH (*SCIRPUS ATROVIRENS*)
- FOX SEDGE (*CAREX VULPINOIDEA*)
- GOLDEN ALEXANDERS (*ZIZIA AUREA*)
- GREAT BLUE LOBELIA (*LOBELIA SIPHILITICA*)
- INDIAN GRASS (*SORGHASTRUM NUTANS*)
- INDIAN PLANTAIN (*AMOGLOSSUM ATRIPLICIFOLIUM*)
- MARSH BLAZING-STAR (*LIATRIS SPICATA*)

- OHIO GOLDENROD (*SOLIDAGO OHIOENSIS*)
- OX-EYE SUNFLOWER (*HELIOPSIS HELIANTHOIDES*)
- PERFOLIATE BONESET (*EUPATORIUM PERFOLIATUM*)
- PORCUPINE SEDGE (*CAREX HYSTERICINA*)
- PRAIRIE BLAZING-STAR (*LIATRIS PYNOSTACHYA*)
- CORD GRASS (*SPARTINA PECTINATA*)
- PORCUPINE SEDGE (*CAREX COMOSA*)
- PORCUPINE SEDGE (*CAREX HYSTERICINA*)
- PRAIRIE DOCK (*SILPHIUM TEREBINTHACEUM*)
- ROSWINEED (*SILPHIUM INTEGRIFOLIUM*)
- SPONGY SEDGE (*CAREX STIPATA*)
- SPOTTED JOE-PYE-WEED (*EUTROCHIUM MACULATUM*)
- STIFF GOLDENROD (*OLIGONEURON RIGIDUM*)
- SWAMP MILKWEED (*ASCLEPIAS INCARNATA*)
- SWITCH GRASS (*PANICUM VIRGATUM*)
- VIRGINIA WILD RYE (*ELYMUS VIRGINICUS*)
- WILD BERGAMOT (*MONARDA FISTULOSA*)
- WILD BLUE IRIS (*IRIS SHREVEI*)
- WILD SENNA (*CASSIA HEBECARPA*)
- YELLOW CONEFLOWER (*RATIBIDA PINNATA*)
- YELLOW SNEEZEWEED (*HELENIUM AUTUMNALE*)

GENERAL NOTES

- ALL DISTURBED LAWN AREAS TO BE SEEDED UNLESS OTHERWISE NOTED.
- PLANTINGS COMPLY WITH THE SEPARATION DISTANCES FROM UTILITY SERVICES AND STRUCTURES AS REQUIRED BY MUNICIPAL CODE SECTION 5-10-3.10.
- SHADE TREES WILL HAVE A MINIMUM 2.5" CALIPER AND EVERGREEN TREES A MINIMUM 6' PLANTING HEIGHT AT THE TIME OF PLANTING.

PLAN NOTES

- SPADE EDGE
- AREA OF WETLAND SEEDING AND PLUG GRID. MIX TO BE AS DESCRIBED ON THIS SHEET AND IN THE SPECIFICATION
- AREA OF STANDARD TURF SEEDING. INCLUDES POND SLOPES.
- AREA OF STONE MULCH.

D

C

B

A

D

C

B

A



100% CONSTRUCTION DOCUMENTS
EXTRA SPACE STORAGE, INC.
ESS NAPERVILLE
STORAGE #1259
1432 W OGDEN AVE. NAPERVILLE, IL 60563

#	Revision	Date
1	CITY RESUBMITTAL	22 AUG 2024
2	CITY RESUBMITTAL	04 NOV 2024
3	CITY RESUBMITTAL	27 NOV 2024

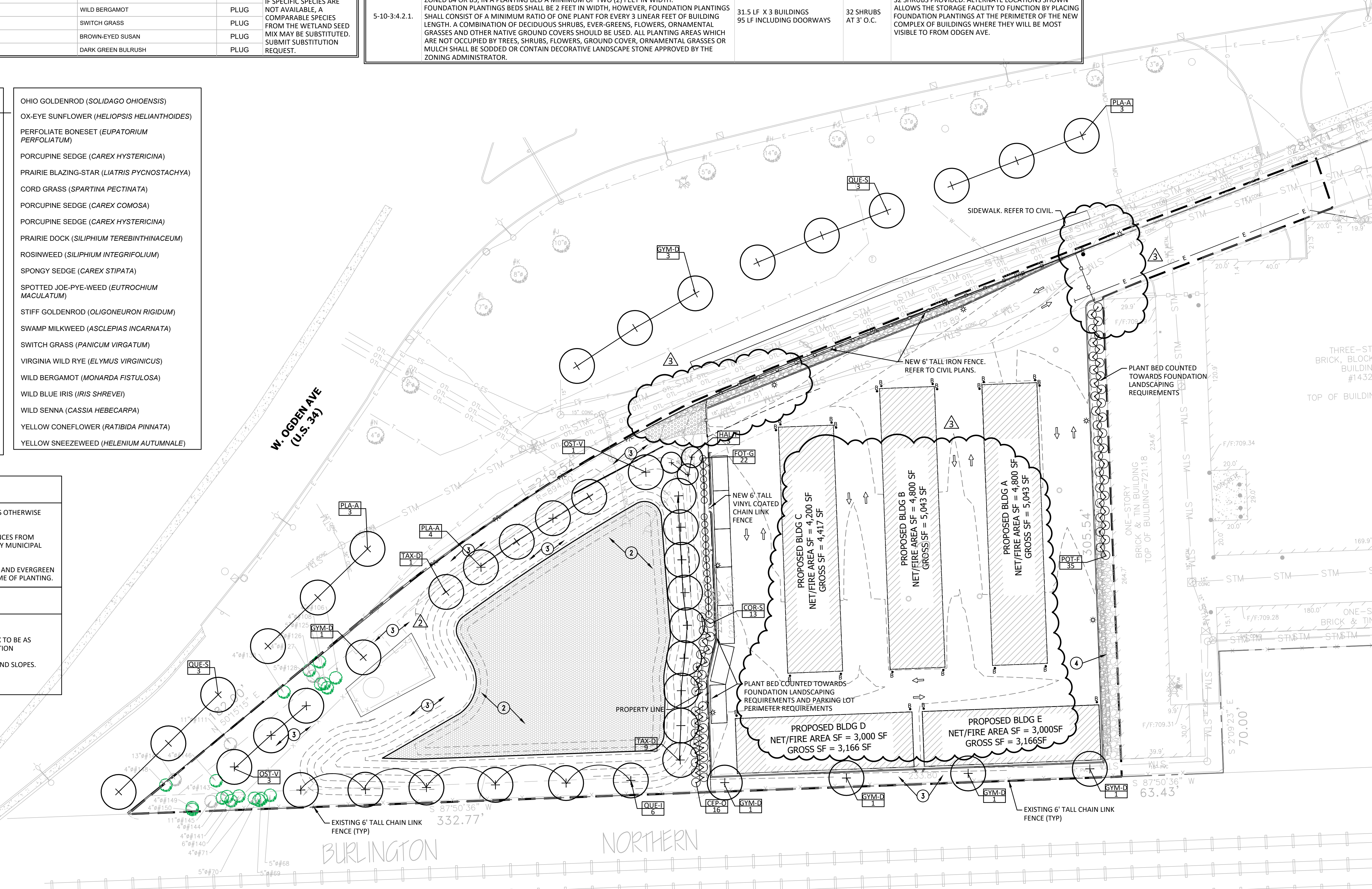
Project #: 23-700-300-1
Designed By: RKF
Drawn By: RKF
Checked By: NBV
Date: 04.12.2024



LANDSCAPE PLAN

L200

EXHIBIT F



Client: Kleepe
 Extra Space Storage
 2795 E Cottonwood Pkwy #400
 Salt Lake City, Utah 84161
 RE: 1432 W Ogden Ave, Naperville, IL

Rating is based on tree health and structural integrity.
 Adjacent private property trees requiring protective fencing will be protected using perimeter construction fencing instead of individual tree fencing.
 Install Tree Protection Fence per Tree Protection Plan prior to any construction activity.
 Fence the public portion (area away) of the entire Tree Protection Zone of individual trees to prevent vehicles from the roadway (as well as soil compaction) prior to any construction activity. Post the fence with a sign stating "Tree Protection Zone - Keep Out".
 At no time shall any equipment, materials, supplies or fill be allowed in the Tree Protection Zones.
 The entire Tree Protection Zone(s) should be matched to improve the growing conditions for tree roots, and minimize the maintenance of the roadway lanes.
 Tree Protection Zone is the designated area that encompasses and encloses tree canopy.
 However, for practical purposes the Village of Naperville requires that the public portion be delineated with chain-link fence.
 This tree preservation plan incorporates all reasonable steps necessary to minimize damage to trees on property and adjacent to the property.
 The Tree Protection Plan was performed by Certified Arborist Jay Peters #13,2004
 Jay C. Peters Certified Arborist # IL-1201

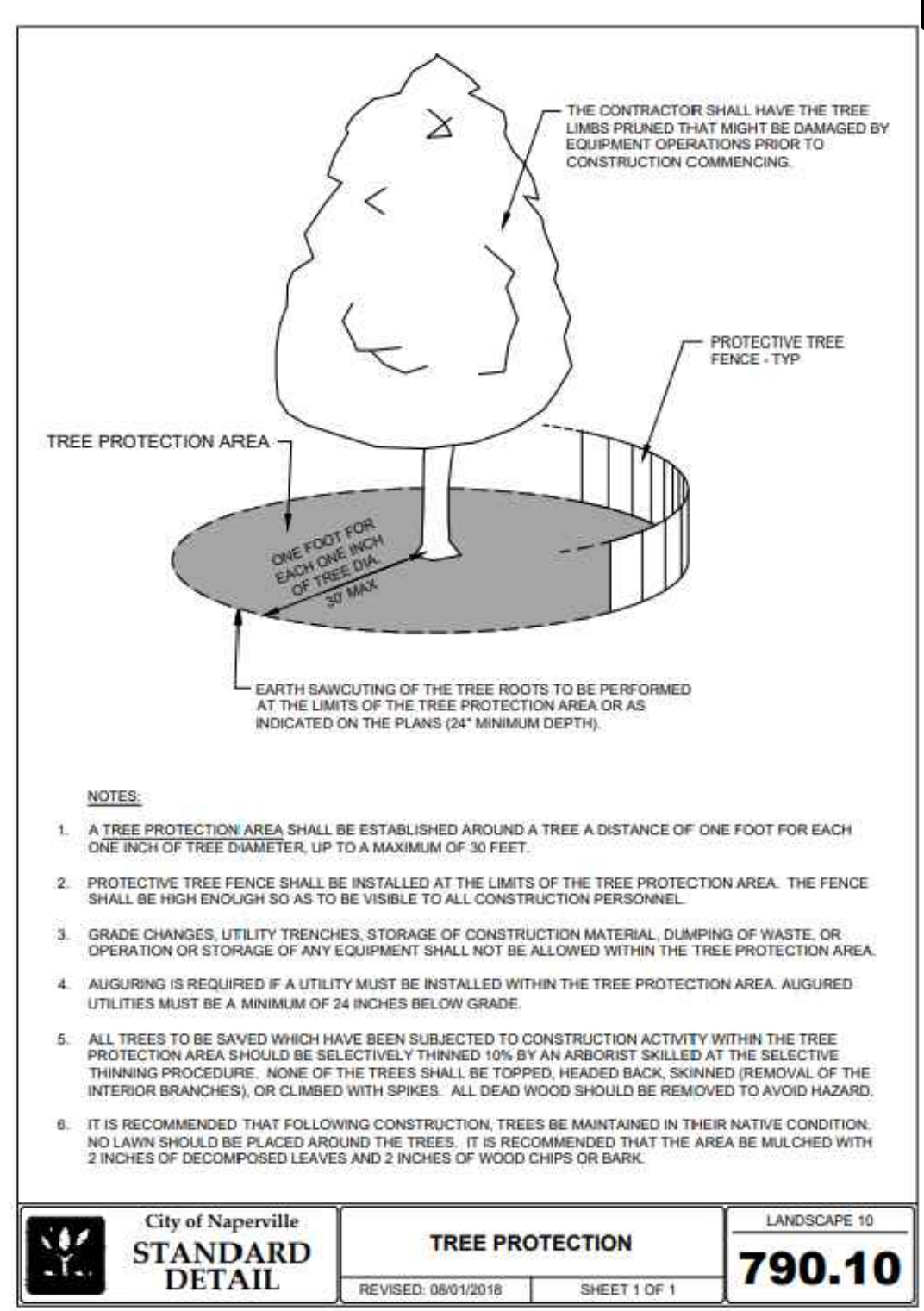
*TABLE OUTLINES THE REPLACEMENT PENALTIES FOR REMOVING TREES WITHOUT A PERMIT.

Tree#	DBH	Common Name	Species	Rating	Recommendation	Status
1	12"	Locust	Gleditsia triacanthos	Good	Protective Fence	Kept
2	12"	Locust	Gleditsia triacanthos	Good	Protective Fence	Kept
3	9"	Linden	Tilia	Good	Protective Fence	Kept
4	8"	Linden	Tilia	Good	Protective Fence	Kept
5	8"	Linden	Tilia	Good	Protective Fence	Kept
6	7"	Linden	Tilia	Good	Protective Fence	Kept
7	13"	Mulberry	Morus	Fair	Protective Fence	Removed
8	4"	Pear	Pyrus	Good	Protective Fence	Removed
9	10"	Willow	Salix	Fair	Protective Fence	Removed
10	5"	Willow	Salix	Fair	Protective Fence	Removed
11	12"	Willow	Salix	Fair	Protective Fence	Removed
12	4"	Pear	Pyrus	Good	Protective Fence	Removed
13	8"	Willow	Salix	Fair	Protective Fence	Removed
14	4"	Willow	Salix	Fair	Protective Fence	Removed
15	4"	Willow	Salix	Fair	Protective Fence	Removed
16	4"	Willow	Salix	Fair	Protective Fence	Removed
17	11"	Willow	Salix	Fair	Protective Fence	Removed
18	6"	Willow	Salix	Fair	Protective Fence	Removed
19	4"	Willow	Salix	Fair	Protective Fence	Removed
20	9"	Willow	Salix	Fair	Protective Fence	Removed
21	4"	Willow	Salix	Fair	Protective Fence	Removed
22	7"	Willow	Salix	Fair	Protective Fence	Removed
23	10"	Willow	Salix	Fair	Protective Fence	Removed
24	6"	Cottonwood	Populus	Fair	Protective Fence	Removed
25	10"	Boxelder	Acer negundo	Good	Protective Fence	Removed
26	NOT USED	NOT USED	NOT USED	NOT USED	NOT USED	NOT USED
27	26"	Oak	Quercus	Fair	Protective Fence	Removed
28	8"	Boxelder	Acer negundo	Good	Protective Fence	Removed
29	9"	Oak	Quercus	Good	Protective Fence	Removed
30	6"	Willow	Salix	Fair	Protective Fence	Removed
31	5"	Willow	Salix	Fair	Protective Fence	Removed
32	15"	Willow	Salix	Fair	Protective Fence	Removed
33	9"	Willow	Salix	Fair	Protective Fence	Removed
34	5"	Boxelder	Acer negundo	Fair	Protective Fence	Removed
35	5"	Buckhorn	Rhamnus cathartica	Fair	Protective Fence	Removed
36	7"	Willow	Salix	Fair	Protective Fence	Removed
37	5"	Willow	Salix	Fair	Protective Fence	Removed
38	5"	Willow	Salix	Fair	Protective Fence	Removed
39	4"	Willow	Salix	Fair	Protective Fence	Removed
40	5"	Willow	Salix	Fair	Protective Fence	Removed
41	4"	Willow	Salix	Fair	Protective Fence	Removed
42	5"	Buckhorn	Rhamnus cathartica	Fair	Protective Fence	Removed
43	4"	Boxelder	Acer negundo	Fair	Protective Fence	Removed
44	8"	Buckhorn	Rhamnus cathartica	Fair	Protective Fence	Removed
45	7"	Crabapple	Malus	Fair	Protective Fence	Removed
46	7"	Pear	Pyrus	Fair	Protective Fence	Kept
47	14"	Willow	Salix	Fair	Protective Fence	Removed
48	7"	Oak	Quercus	Good	Protective Fence	Removed
49	8"	Pear	Pyrus	Good	Protective Fence	Removed
50	7"	Willow	Salix	Fair	Protective Fence	Removed
51	6"	Willow	Salix	Fair	Protective Fence	Removed
52	7"	Willow	Salix	Fair	Protective Fence	Removed
53	11"	Willow	Salix	Fair	Protective Fence	Removed
54	10"	Willow	Salix	Fair	Protective Fence	Removed
55	6"	Oak	Quercus	Good	Protective Fence	Removed
56	4"	Sumac	Rhus Typhina	Fair	Protective Fence	Removed
57	10"	Sumac	Rhus Typhina	Fair	Protective Fence	Removed
58	6"	Kentucky Coffee Tree	Gymnoclad dioica	Good	Protective Fence	Kept
59	4"	Willow	Salix	Fair	Protective Fence	Removed
60	5"	Sumac	Rhus Typhina	Fair	Protective Fence	Removed
61	4"	Sumac	Rhus Typhina	Fair	Protective Fence	Removed
62	5"	Sumac	Rhus Typhina	Fair	Protective Fence	Removed
63	5"	Sumac	Rhus Typhina	Fair	Protective Fence	Removed
64	4"	Sumac	Rhus Typhina	Fair	Protective Fence	Removed
65	10"	Sumac	Rhus Typhina	Fair	Protective Fence	Removed
66	4"	Sumac	Rhus Typhina	Fair	Protective Fence	Removed
67	5"	Sumac	Rhus Typhina	Fair	Protective Fence	Kept
68	5"	Sumac	Rhus Typhina	Fair	Protective Fence	Kept
69	5"	Sumac	Rhus Typhina	Fair	Protective Fence	Kept
70	5"	Sumac	Rhus Typhina	Fair	Protective Fence	Kept
71	4"	Sumac	Rhus Typhina	Fair	Protective Fence	Kept
72	6"	Sumac	Rhus Typhina	Poor	Remove	Removed
73	6"	Sumac	Rhus Typhina	Fair	Protective Fence	Kept
74	5"	Sumac	Rhus Typhina	Fair	Protective Fence	Kept
75	5"	Sumac	Rhus Typhina	Fair	Protective Fence	Kept
76	4"	Sumac	Rhus Typhina	Fair	Protective Fence	Kept
77	6"	Sumac	Rhus Typhina	Fair	Protective Fence	Kept
78	6"	Kentucky Coffee Tree	Gymnoclad dioica	Good	Protective Fence	Kept
79	5"	Sumac	Rhus Typhina	Fair	Protective Fence	Kept
80	4"	Willow	Salix	Fair	Protective Fence	Kept
81	5"	Willow	Salix	Fair	Protective Fence	Kept
82	5"	Willow	Salix	Fair	Protective Fence	Kept
83	4"	Pear	Pyrus	Good	Protective Fence	Kept
84	4"	Pear	Pyrus	Good	Protective Fence	Kept
85	4"	Pear	Pyrus	Good	Protective Fence	Kept
86	4"	Pear	Pyrus	Good	Protective Fence	Kept
87	4"	Pear	Pyrus	Good	Protective Fence	Kept
88	7"	Pear	Pyrus	Good	Protective Fence	Kept
89	4"	Pear	Pyrus	Good	Protective Fence	Kept
90	4"	Pear	Pyrus	Good	Protective Fence	Kept
91	4"	Pear	Pyrus	Good	Protective Fence	Kept
92	5"	Pear	Pyrus	Good	Protective Fence	Kept
93	4"	Pear	Pyrus	Good	Protective Fence	Kept
94	4"	Pear	Pyrus	Good	Protective Fence	Kept
95	4"	Pear	Pyrus	Good	Protective Fence	Kept
96	9"	Pear	Pyrus	Good	Protective Fence	Kept
97	4"	Pear	Pyrus	Good	Protective Fence	Kept
98	10"	Pear	Pyrus	Good	Protective Fence	Kept
99	4"	Pear	Pyrus	Good	Protective Fence	Kept
100	4"	Pear	Pyrus	Good	Protective Fence	Kept
101	4"	Pear	Pyrus	Good	Protective Fence	Kept
102	8"	Pear	Pyrus	Good	Protective Fence	Kept

103	5"	Pear	Pyrus	Good	Protective Fence	Removed
104	4"	Pear	Pyrus	Good	Protective Fence	Removed
105	5"	Pear	Pyrus	Good	Protective Fence	Removed
106	4"	Sumac	Rhus Typhina	Fair	Protective Fence	Kept
107	4"	Sumac	Rhus Typhina	Fair	Protective Fence	Kept
108	4"	Sumac	Rhus Typhina	Fair	Protective Fence	Kept
109	13"	Walnut	Juglans	Good	Protective Fence	Removed
110	5"	Sumac	Rhus Typhina	Fair	Protective Fence	Kept
111	11"	Walnut	Juglans	Good	Protective Fence	Kept
112	6"	Sumac	Rhus Typhina	Fair	Protective Fence	Kept
113	10"	Pear	Pyrus	Fair	Protective Fence	Kept
114	6"	Pear	Pyrus	Fair	Protective Fence	Kept
115	8"	Pear	Pyrus	Good	Protective Fence	Kept
116	8"	Cottonwood	Populus	Good	Protective Fence	Kept
117	4"	Pear	Pyrus	Good	Protective Fence	Kept
118	4"	Pear	Pyrus	Good	Protective Fence	Kept
119	7"	Cottonwood	Populus	Good	Protective Fence	Kept
120	6"	Pear	Pyrus	Good	Protective Fence	Kept
121	NOT USED	NOT USED	NOT USED	NOT USED	NOT USED	NOT USED
122	14"	Cottonwood	Populus	Good	Protective Fence	Kept
123	7"	Cottonwood	Populus	Fair	Protective Fence	Kept
124	5"	Cottonwood	Populus	Fair	Protective Fence	Kept
125	5"	Sumac	Rhus Typhina	Fair	Protective Fence	Kept
126	8"	Sumac	Rhus Typhina	Fair	Protective Fence	Kept
127	4"	Sumac	Rhus Typhina	Fair	Protective Fence	Kept
128	5"	Sumac	Rhus Typhina	Fair	Protective Fence	Kept
129	5"	Sumac	Rhus Typhina	Fair	Protective Fence	Kept
130	5"	Sumac	Rhus Typhina	Fair	Protective Fence	Kept
131	7"	Sumac	Rhus Typhina	Fair	Protective Fence	Kept
132	4"	Sumac	Rhus Typhina	Fair	Protective Fence	Kept
133	4"	Sumac	Rhus Typhina	Fair	Protective Fence	Kept
134	5"	Sumac	Rhus Typhina	Fair	Protective Fence	Kept
135	6"	Sumac	Rhus Typhina	Fair	Protective Fence	Kept
136	4"	Sumac	Rhus Typhina	Fair	Protective Fence	Kept
137	7"	Sumac	Rhus Typhina	Fair	Protective Fence	Kept
138	4"	Sumac	Rhus Typhina	Fair	Protective Fence	Kept
139	6"	Sumac	Rhus Typhina	Fair	Protective Fence	Kept
140	6"	Sumac	Rhus Typhina	Fair	Protective Fence	Kept
141	4"	Sumac	Rhus Typhina	Fair	Protective Fence	Kept
142	4"	Sumac	Rhus Typhina	Poor	Remove	Kept
143	4"	Sumac	Rhus Typhina	Fair	Protective Fence	Kept
144	4"	Sumac	Rhus Typhina	Fair	Protective Fence	Kept
145	11"	Boxelder	Acer negundo	Fair	Protective Fence	Kept
146	4"	Sumac	Rhus Typhina	Fair	Protective Fence	Kept
147	13"	Walnut	Juglans	Good	Protective Fence	Kept
148	4"	Sumac	Rhus Typhina	Fair	Protective Fence	Kept
149	4"	Sumac	Rhus Typhina	Fair	Protective Fence	Kept
150	4"	Sumac	Rhus Typhina	Fair	Protective Fence	Kept
A	8"	Maple	Acer	Good	Protective Fence	Kept
B	12"	Maple	Acer	Good	Protective Fence	Kept
C	3"	Hackberry	Celtis occidentalis	Good	Protective Fence	Kept
D	3"	Hackberry	Celtis occidentalis	Good	Protective Fence	Kept
E	3"	Kentucky Coffee Tree	Gymnoclad dioica	Good	Protective Fence	Kept
F	3"	Kentucky Coffee Tree	Gymnoclad dioica	Good	Protective Fence	Kept
G	5"	Kentucky Coffee Tree	Gymnoclad dioica	Good	Protective Fence	Kept
H	14"	Kentucky Coffee Tree	Gymnoclad dioica	Good	Protective Fence	Kept
I	5"	Kentucky Coffee Tree	Gymnoclad dioica	Good	Protective Fence	Kept
J	10"	Elm	Ulmus	Good	Protective Fence	Kept
K	8"	Elm	Ulmus	Good	Protective Fence	Kept
L	7"	Elm	Ulmus	Good	Protective Fence	Kept
M	4"	Kentucky Coffee Tree	Gymnoclad dioica	Good	Protective Fence	Kept
N	4"	Kentucky Coffee Tree	Gymnoclad dioica	not provided	not provided	Kept

*COLOR CODING OF BLUE, ORANGE AND WHITE ROWS ADDED BY LANDSCAPE ARCHITECT. NOT PART OF ORIGINAL ARBORIST SURVEY.

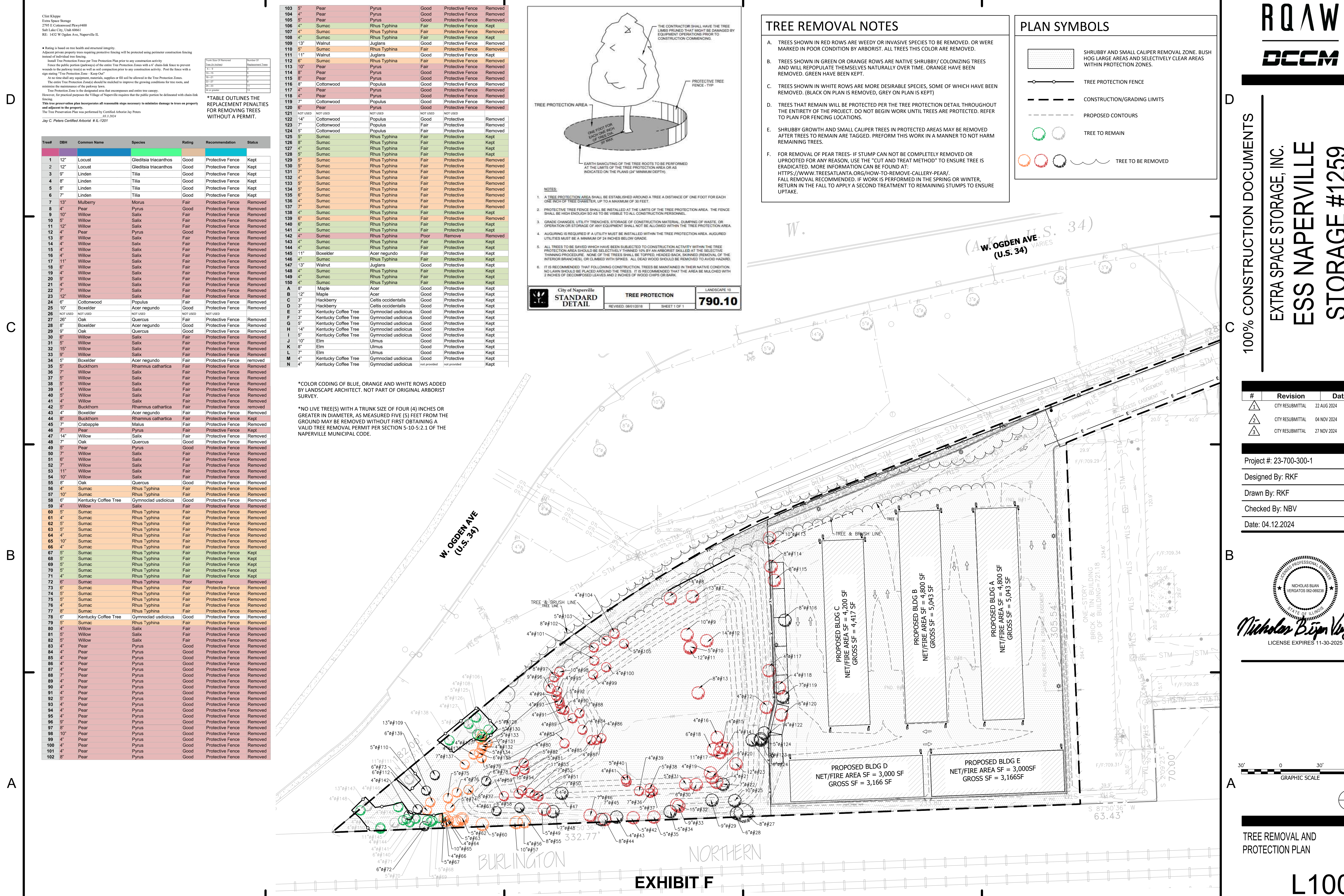
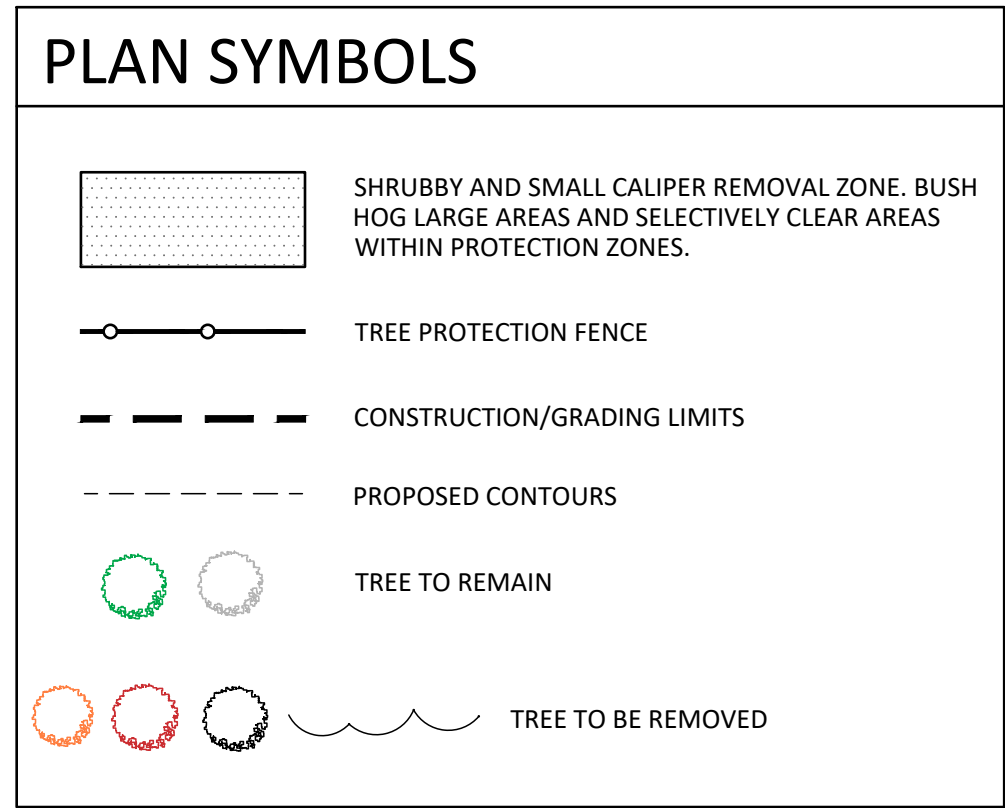
*NO LIVE TREE(S) WITH A TRUNK SIZE OF FOUR (4) INCHES OR GREATER IN DIAMETER, AS MEASURED FIVE (5) FEET FROM THE GROUND MAY BE REMOVED WITHOUT FIRST OBTAINING A VALID TREE REMOVAL PERMIT PER SECTION 5-10-5.2.1 OF THE NAPERVILLE MUNICIPAL CODE.



City of Naperville	TREE PROTECTION	LANDSCAPE 10
STANDARD DETAIL	REVISED: 06/12/2018	SHEET 1 OF 1
		790.10

TREE REMOVAL NOTES

- TREES SHOWN IN RED ROWS ARE WEEDY OR INVASIVE SPECIES TO BE REMOVED, OR WERE MARKED IN POOR CONDITION BY ARBORIST. ALL TREES THIS COLOR ARE REMOVED.
- TREES SHOWN IN GREEN OR ORANGE ROWS ARE NATIVE SHRUBBY/ COLONIZING TREES AND WILL REPOPULATE THEMSELVES NATURALLY OVER TIME. ORANGE HAVE BEEN REMOVED. GREEN HAVE BEEN KEPT.
- TREES SHOWN IN WHITE ROWS ARE MORE DESIRABLE SPECIES, SOME OF WHICH HAVE BEEN REMOVED. (BLACK ON PLAN IS REMOVED, GREY ON PLAN IS KEPT)
- TREES THAT REMAIN WILL BE PROTECTED PER THE TREE PROTECTION DETAIL THROUGHOUT THE ENTIRETY OF THE PROJECT. DO NOT BEGIN WORK UNTIL TREES ARE PROTECTED. REFER TO PLAN FOR FENCING LOCATIONS.
- SHRUBBY GROWTH AND SMALL CALIPER TREES IN PROTECTED AREAS MAY BE REMOVED AFTER TREES TO REMAIN ARE TAGGED. PREFORM THIS WORK IN A MANNER TO NOT HARM REMAINING TREES.
- FOR REMOVAL OF PEAR TREES- IF STUMP CAN NOT BE COMPLETELY REMOVED OR UPROOTED FOR ANY REASON, USE THE "CUT AND TREAT METHOD" TO ENSURE TREE IS ERADICATED. MORE INFORMATION CAN BE FOUND AT: [HTTPS://WWW.TREESATLANTA.ORG/HOW-TO-REMOVE-CALLERY-PEAR/](https://www.treesatlanta.org/how-to-remove-callery-pear/). FALL REMOVAL RECOMMENDED. IF WORK IS PERFORMED IN THE SPRING OR WINTER, RETURN IN THE FALL TO APPLY A SECOND TREATMENT TO REMAINING STUMPS TO ENSURE UPTAKE.



RQAW

DCCM

EXTRA SPACE STORAGE, INC.
ESS NAPERVILLE
STORAGE #1259
 1432 W OGDEN AVE. NAPERVILLE, IL 60563

100% CONSTRUCTION DOCUMENTS

#	Revision	Date
1	CITY RESUBMITTAL	22 AUG 2024
2	CITY RESUBMITTAL	04 NOV 2024
3	CITY RESUBMITTAL	27 NOV 2024

Project #: 23-700-300-1
 Designed By: RKF
 Drawn By: RKF
 Checked By: NBV
 Date: 04.12.2024

Nicholas Blain Vergatos
 LICENSE EXPIRES 11-30-2025

30' 0 30' 60'
 GRAPHIC SCALE

N

EXHIBIT F

L100

#	Revision	Date
2	CITY RESUBMITTAL	04 NOV 2024
3	CITY RESUBMITTAL	27 NOV 2024

Project #: 23-700-300-1

Designed By: RKF

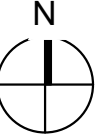
Drawn By: RKF

Checked By: NBV

Date: 04.12.2024

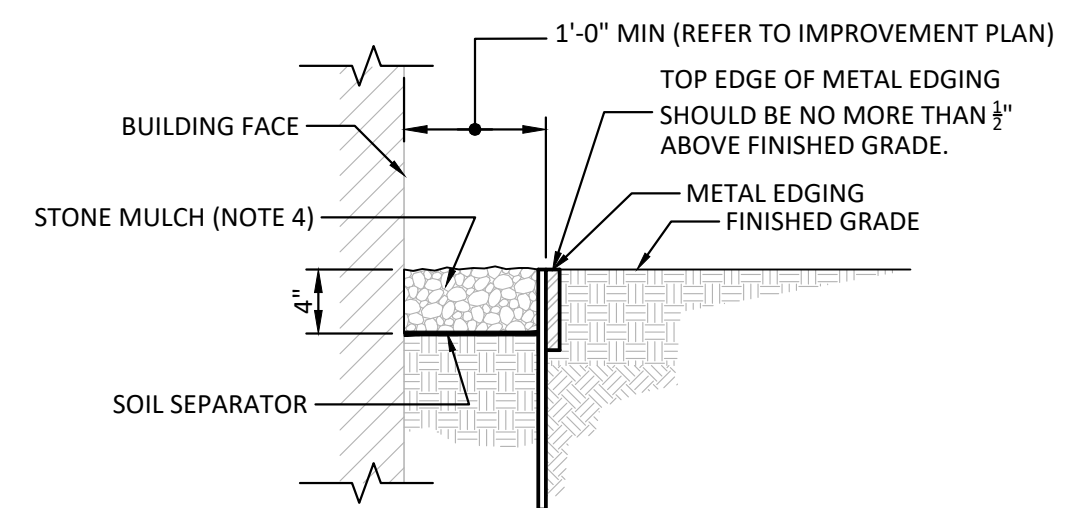


Nicholas Brian Vergatos
 LICENSE EXPIRES 11-30-2025



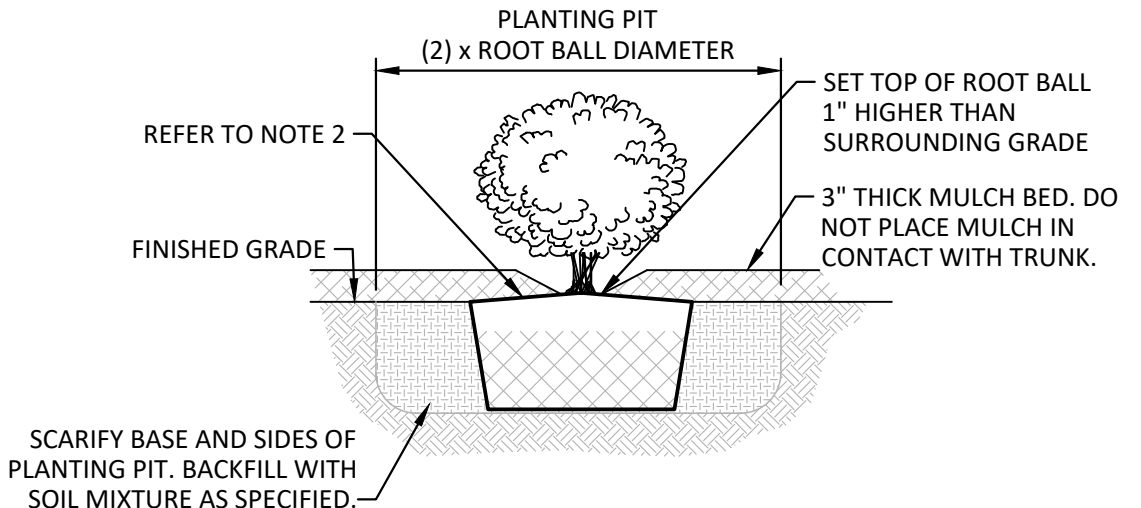
LANDSCAPE DETAILS

L201



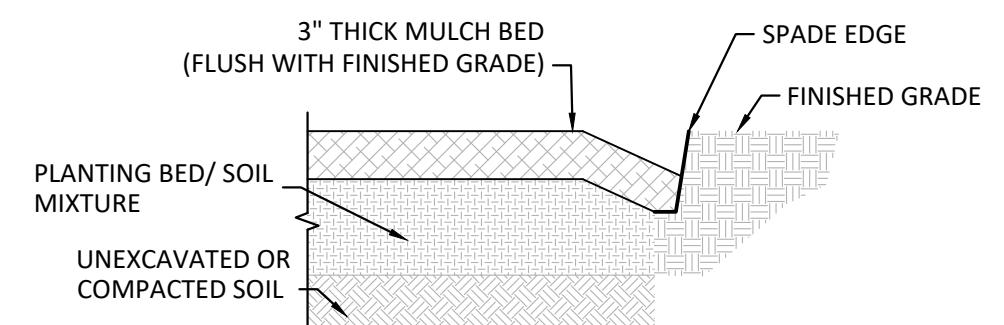
- NOTE:
1. INSTALL METAL EDGING WITH STAKE POCKETS ON INSIDE OF BED.
 2. REFER TO SPECIFICATIONS FOR SOIL SEPARATOR AND EDGING REQUIREMENTS.
 3. METAL EDGING SHALL BE FLUSH WITH FINISHED GRADE. COMPACT BACKFILL ALONG EDGING TO ASSURE THAT EDGE IS FLUSH.
 4. STONE SHALL BE 1"-1 1/2" WASHED, UNCRUSHED SMOOTH RIVER GRAVEL.

4 STONE MULCH DETAIL
NO SCALE



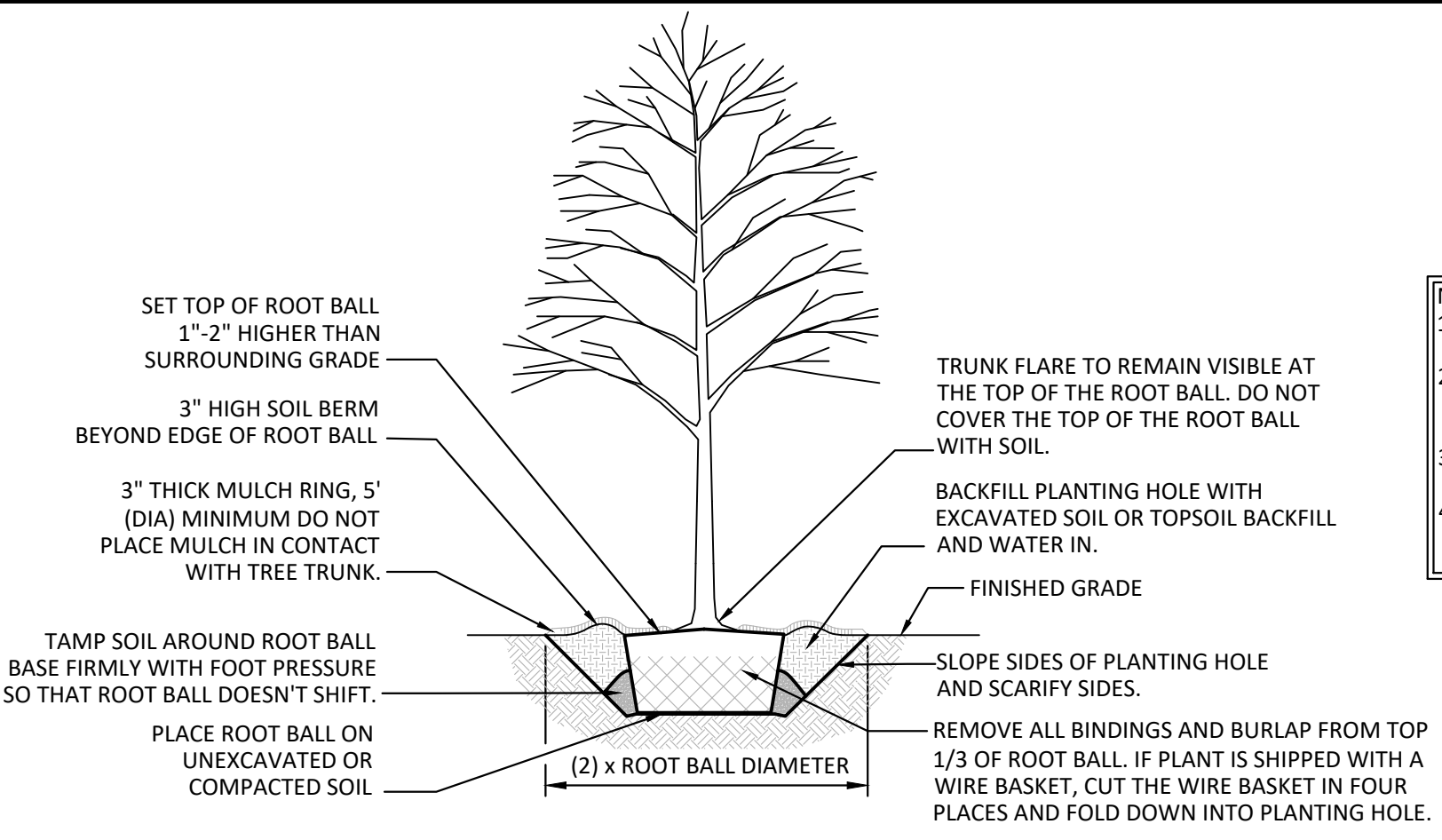
- NOTE:
1. CONTRACTOR SHALL VERIFY THAT PLANTING PIT IS FREE DRAINING PER SPECIFICATION PRIOR TO PLANTING.
 2. REMOVE ALL BINDINGS AND BURLAP FROM THE TOP 1/3 OF ROOT BALL. PLACE ROOT BALL ON UNEXCAVATED OR COMPACTED SOIL.

3 SHRUB PLANTING DETAIL
NO SCALE



- NOTES:
1. SPADE EDGE SHALL CREATE A CLEAN SEPARATION BETWEEN AREAS USING SMOOTH EVEN LINES AS INDICATED ON THE PLANS.
 2. REFER TO SPECIFICATIONS FOR MULCH AND SOIL MIXTURE REQUIREMENTS.
 3. CUT TO A MINIMUM DEPTH OF 4 INCHES.

2 SPADE EDGE DETAIL
NO SCALE



- NOTES:
1. CONTRACTOR SHALL VERIFY THAT PLANTING HOLE IS FREE DRAINING PER SPECIFICATION PRIOR TO PLANTING.
 2. DO NOT HEAVILY PRUNE THE TREE AT PLANTING. PRUNE ONLY CROSSOVER LIMBS, CO-DOMINANT LEADERS, AND BROKEN OR DEAD BRANCHES. LEAVE MAIN LEADER INTACT.
 3. MARK THE NORTH SIDE OF THE TREE IN THE NURSERY, AND ROTATE TREE TO FACE NORTH.
 4. STAKE AND GUY TREE PER SPECIFICATIONS ONLY IF DEEMED NECESSARY BY LANDSCAPE ARCHITECT IN THE FIELD.

1 DECIDUOUS TREE PLANTING DETAIL
NO SCALE

EXHIBIT F

D

C

B

A

D

C

B

A

5

4

3

2

1

5

4

3

2

1