

TREE RATING NOTES:

- Tree Survey and Rating Assignment Limitations/Definitions:
1. Unless otherwise stated all trees are surveyed from ground level using non-invasive visual observation. The disclosure of hidden crown and stem defects, in particular where they may be above a reachable height or covered in ivy or in areas of ground vegetation, or deep snow cannot therefore be expected. The absence of foliage due to fall/winter weather or storm damage may limit the available information.
 2. Where trees are located wholly or partially on neighboring private land then said land is not accessed and our inspection is therefore restricted to what can reasonably be seen from within the site. Stem diameters of trees located on such land are estimated.
 3. Where poison ivy is attached to the tree trunk, stem diameters will be estimated.
 4. Diameter measurements are made at 4.5 feet above the ground (DBH) unless local ordinance requirements dictate different procedures.

Explanation of Tree Ratings:

- Good (G) The tree is typical of the species and may have 1 or 2 minor problems that are not imminently lethal to the tree, and no significant decay or structural problems. The tree may need care in order to minimize the impact of future stress and to ensure continued health. Invasive species will not be graded Good, regardless of their current health or structure
- Fair (F) The tree is not typical of the species and/or is an invasive species and/or has significant problems such as ≥ 20 percent deadwood in the crown, serious decay or structural defect, insects, disease or other problems that can be imminently lethal to the tree or create a hazardous tree if not corrected in a short period of time or if the tree is subjected to additional stress.
- Poor (P) The tree is not typical of the species and/or has over 50 percent deadwood in the crown, major decay or structural problems, is hazardous or is severely involved with insects, disease, or other problems that even if aggressively corrected would not result in the long term survival.
- Dead (D) The tree is 90 percent or more dead. A scratch test of under bark areas might be performed where branches can be reached. Stumps with live sprouts up to 3" diameter are graded Dead or not included on the mapping.

Trees were inventoried on 11/02/2022 by Heath Wright, arborist license: IL-9435A

PROJECT

Jet Brite Car Wash

Route 59 and 83rd Street
Naperville, Illinois 60564

PROJECT TEAM



uplandDesign Ltd

Park Planning and Landscape Architecture
1229 N North Branch St, Chicago, Illinois 60642
24042 Lockport St, Plainfield, Illinois 60544
815-254-0091 www.uplanddesign.com

SHEET TITLE

Tree Preservation Plan

SHEET NUMBER

T1.0

DRAW / REVISION

LD/DW	Resubmittal	14DEC2022
LD/LR	Resubmittal	18JAN2023
LD/AB	Resubmittal	07FEB2023
LD	Resubmittal	02MAR2023
LD/MO	Resubmittal	12JULY2023
LD/MO	Resubmittal	10AUG2023

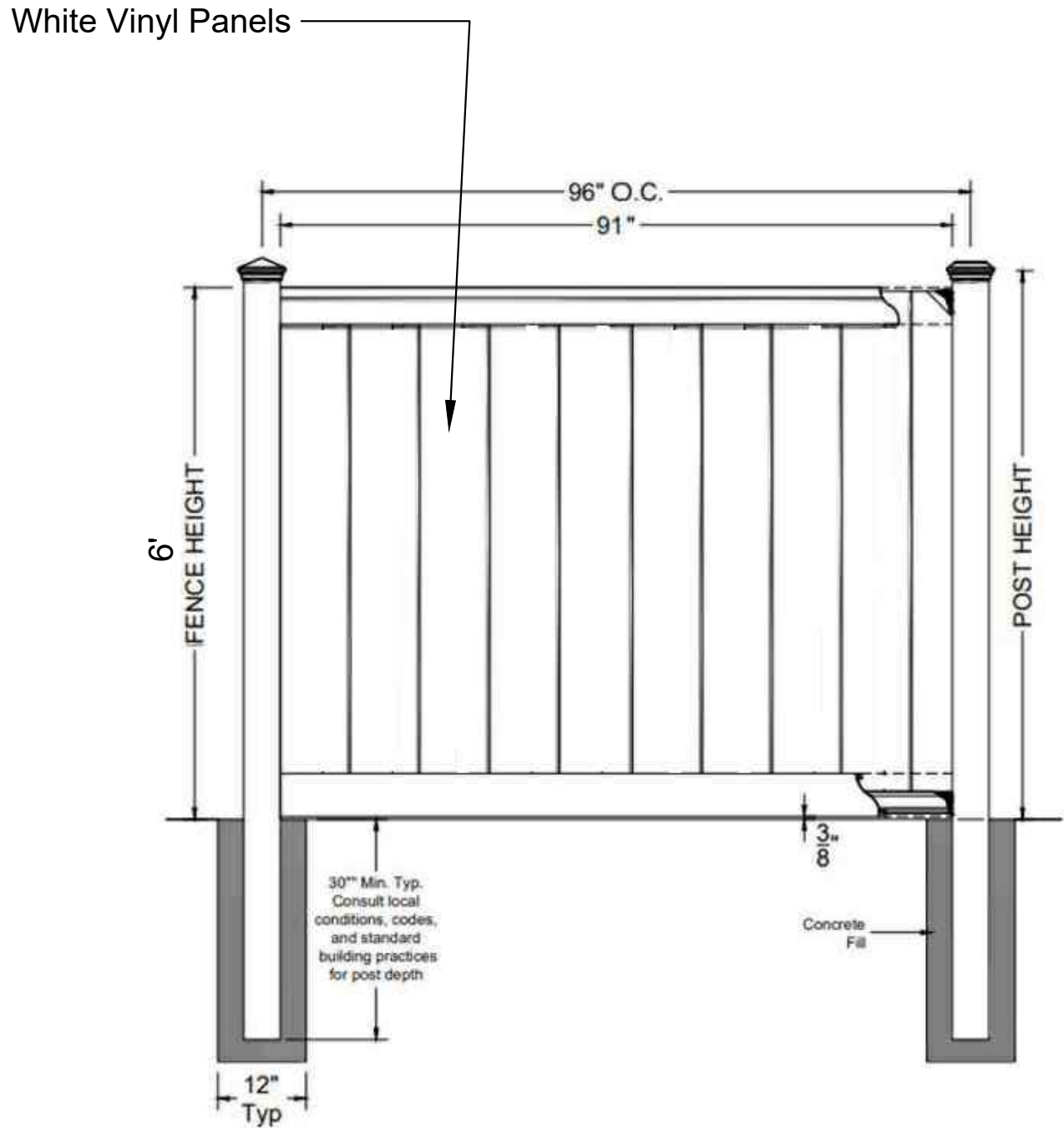
Project Number 1095
© Copyright 2023 Upland Design Ltd.
W11095-Jet Brite Car Wash Naperville-Jet Brite30-CD-Files
PLOT: UPLAND 2023

TREE SURVEY CHART:

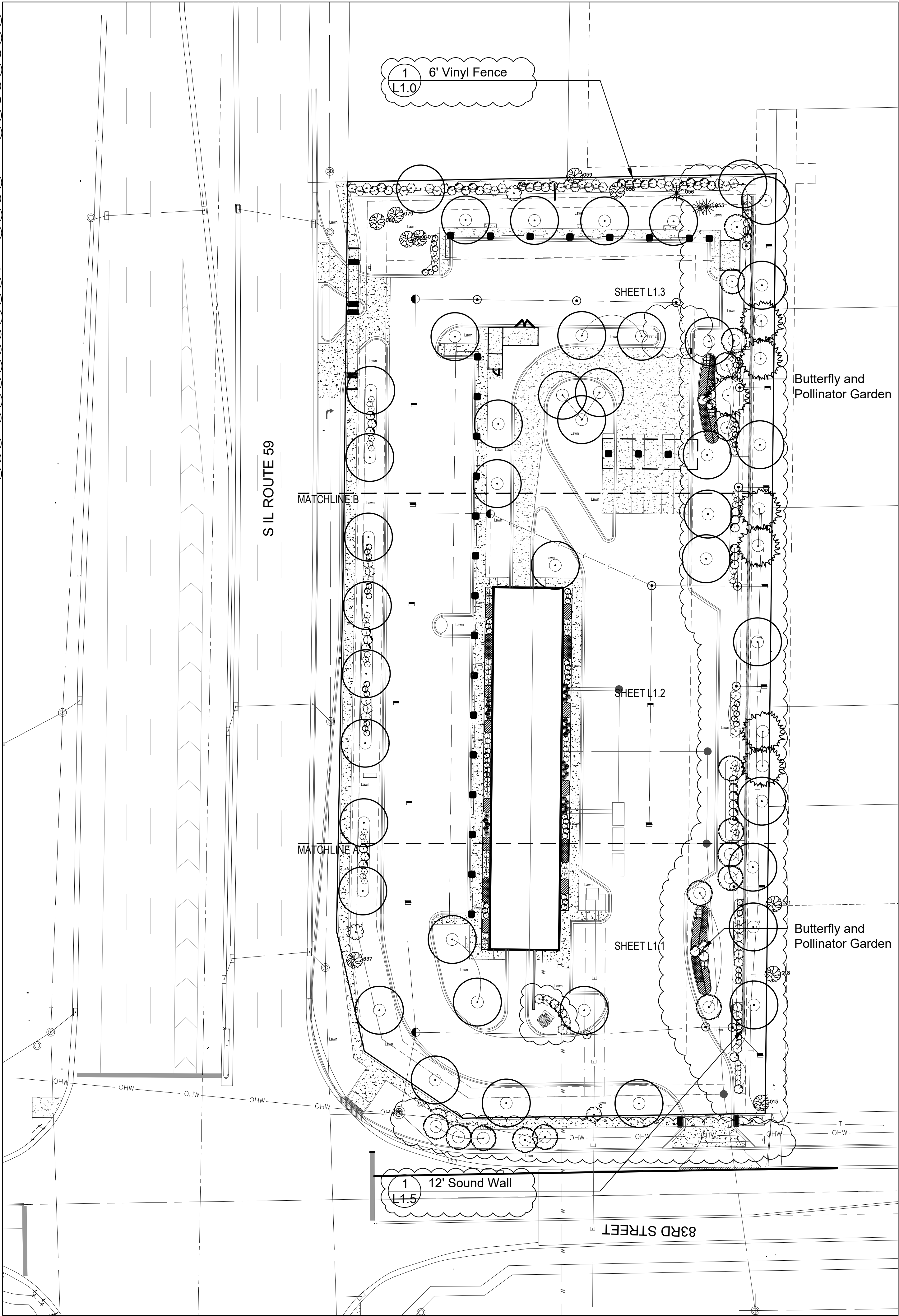
Tag #	Diameter Inch	Species	Common Name	Condition	Removal	Reason for Removal
1	5.1, 10.1	Pyrus calleryana	Callery Pear	Fair	X	Undesirable Species
2	Dead	-		Dead	X	Dead
3	Dead	-		Dead	X	Dead
4	Dead	-		Dead	X	Dead
5	Dead	-		Dead	X	Dead
6	23.5	Morus alba	Mulberry	Fair	X	Undesirable Species
7	15.2	Acer negundo	Boxelder	Fair	X	Located in Development
8	11.8, 10.2	Acer negundo	Boxelder	Fair	X	Located in Development
9	5.4	Morus alba	Mulberry	Poor	X	Located in Development
10	10.0	Celtis occidentalis	Hackberry	Excellent	X	Located in Development
11	11.6	-	Boxelder	Good	X	Located in Development
12	8.6	Morus alba	Mulberry	Good	X	Located in Development
13	Dead	-		Dead	X	Dead
14	8.3, 7.6	Acer saccharinumum	Silver Maple	Good	X	Located in Development
15	17.3	Celtis occidentalis	Hackberry	Excellent		
16	Dead	-	Dead	Dead	X	Dead
17	12.2	Morus alba	Mulberry	Excellent	X	Undesirable Species
18	12.4	Morus alba	Mulberry	Excellent		
19	11.4	Morus alba	Mulberry	Good	X	Undesirable Species
20	Dead	-	Dead	Dead	X	Dead
21	32.7	Acer platanoides	Norway Maple	Excellent		
22	20.3	Morus alba	Mulberry	Good	X	Undesirable Species
23	30.0	Acer saccharinumum	Silver Maple	Excellent		
24	Dead	-	Dead	Dead	X	Dead
25	23.8	Acer saccharinumum	Silver Maple	Excellent		Undesirable Species/Poor Condition
26	9.7	Morus alba	Mulberry		X	Undesirable Species/Poor Condition
27	12.5	Morus alba	Mulberry	Poor	X	Dead
28	Dead	-	Dead	Dead	X	Dead
29	7.5	Fraxinus spp	Ash	Poor	X	Poor Condition
30	12.9	Juglans nigra	Black Walnut	Excellent		
31	17.2	Morus alba	Mulberry	Fair	X	Undesirable Species
32	15.8	Morus alba	Mulberry	Fair	X	Undesirable Species
33	5.7	Fraxinus spp	Ash	Poor	X	Poor Condition
34	14.2, 13.6	Morus alba	Mulberry	Poor	X	Undesirable Species/Poor Condition
35	14.0	Morus alba	Mulberry	Excellent	X	Undesirable Species
36	9.8, 10.5	Morus alba	Mulberry	Good	X	Undesirable Species
37	5.4	Acer negundo	Boxelder	Good	X	Undesirable Species
38	9.5	Picea pungens	Colorado Spruce	Poor	X	Poor Condition
39	8.5	Picea pungens	Colorado Spruce	Poor	X	Poor Condition
40	10.6	Picea pungens	Colorado Spruce	Poor	X	Poor Condition
41	8.5	Picea pungens	Colorado Spruce	Poor	X	Poor Condition
42	9.4	Picea pungens	Colorado Spruce	Poor	X	Poor Condition
43	9.1	Picea pungens	Colorado Spruce	Poor	X	Poor Condition
44	6.2	Morus alba	Mulberry	Poor	X	Poor Condition
45	10.3	Picea pungens	Colorado Spruce	Poor	X	Poor Condition
46	6.3	Picea pungens	Colorado Spruce	Poor	X	Poor Condition
47	Dead	-	Dead	Dead	X	Dead
48	Dead	-	Dead	Dead	X	Dead
49	10.2	Morus alba	Mulberry	Good	X	Undesirable Species
50	Dead	-	Dead	Dead	X	Dead
51	6.2	Picea pungens	Colorado Spruce	Poor	X	Poor Condition
52	5.1	Picea pungens	Colorado Spruce	Poor	X	Poor Condition
53	8.0	Picea abies	Norway Spruce	Good		
54	8.5	Picea abies	Norway Spruce	Good		
55	9.1	Pinus nigra	Austrian Pine	Poor	X	Poor Condition
56	8.7	Pinus nigra	Austrian Pine	Fair		
57	21.0	Ulmus pumila	Siberian Elm	Fair	X	Undesirable Species
58	25.4	Celtis occidentalis	Hackberry	Excellent		
59	17.8	Morus alba	Mulberry	Poor		
60	18.2	Juglans nigra	Black Walnut	Excellent	X	Located in Development
61	Dead	-	Dead	Dead	X	Dead
62	6.7	Morus alba	Mulberry	Good	X	Located in Development
63	Dead	-	Dead	Dead	X	Dead
64	Dead	-	Dead	Dead	X	Dead
65	Dead	-	Dead	Dead	X	Dead
66	Dead	-	Dead	Dead	X	Dead
67	8.9	Celtis occidentalis	Hackberry	Excellent	X	Located in Development
68	Dead	-	Dead	Dead	X	Dead
69	Dead	-	Dead	Dead	X	Dead
70	13.9	Morus alba	Mulberry	Good	X	Located in Development
71	14.7, 9.0	Juglans nigra	Black Walnut	Good	X	Located in Development
72	13.9	Celtis occidentalis	Hackberry	Excellent	X	Located in Development
73	7.8	Juglans nigra	Black Walnut	Excellent	X	Located in Development
74	9.8	Celtis occidentalis	Hackberry	Excellent	X	Located in Development
75	Dead	-	Dead	Dead	X	Dead
76	13.4	Juglans nigra	Black Walnut	Excellent	X	Located in Development
77	18.7	Juglans nigra	Black Walnut	Excellent		
78	13.3	Juglans nigra	Black Walnut	Good		
79	7.3	Celtis occidentalis	Hackberry	Excellent		
80	8.4	Celtis occidentalis	Hackberry	Excellent		
81	Dead	-	Dead	Dead	X	Dead
82	7.1	Celtis occidentalis	Hackberry	Good	X	Located in Development
83	14.2	Juglans nigra	Black Walnut	Excellent	X	Located in Development
84	9.6	Celtis occidentalis	Hackberry	Excellent	X	Located in Development
85	13.4	Juglans nigra	Black Walnut	Excellent	X	Located in Development
86	Dead	-	Dead	Dead	X	Dead
87	8.0	Morus alba	Mulberry	Fair	X	Located in Development
88	Dead	-	Dead	Dead	X	Dead
89	6.8	Juglans nigra	Black Walnut	Excellent	X	Located in Development
90	9.3	Juglans nigra	Black Walnut	Good	X	Located in Development
91	11.5	Juglans nigra	Black Walnut	Excellent	X	Located in Development
92	11.9, 6.3	Catalpa spp	Catalpa	Good	X	Located in Development
93	9.0	Juglans nigra	Black Walnut	Excellent	X	Located in Development
94	13.3	Juglans nigra	Black Walnut	Excellent	X	Located in Development
95	10.7	Juglans nigra	Black Walnut	Excellent	X	Located in Development

Tag #	Diameter Inch	Species	Common Name	Condition	Removal	Reason for Removal
96	7.2	Juglans nigra	Black Walnut	Excellent	X	Located in Development
97	Dead	-	Dead	Dead	X	Dead
98	Dead	-	Dead	Dead	X	Dead
99	Dead	-	Dead	Dead	X	Dead
100	Dead	-	Dead	Dead	X	Dead
101	7.8	Morus alba	Mulberry	Good	X	Located in Development
102	0.0	no tree (tag not used)	no tree (tag not used)	GONE	X	Located in Development
103	8.7	Morus alba	Mulberry	Good	X	Located in Development
104	8.2	Morus alba	Mulberry	Good	X	Located in Development
105	Dead	-	Dead	Dead	X	Located in Development
106	7.5, 8.1, 14.8	Ulmus pumila	Siberian Elm	Good	X	Located in Development
107	12.0	Juglans nigra	Black Walnut	Excellent	X	Located in Development
108	Dead	-	Dead	Dead	X	Dead
109	Dead	-	Dead	Dead	X	Dead
110	12.5	Juglans nigra	Black Walnut	Excellent	X	Located in Development
111	16.4	Juglans nigra	Black Walnut	Excellent	X	Located in Development
112	11.2	Morus alba	Mulberry	Fair	X	Located in Development
113	11.1	Morus alba	Mulberry	Good	X	Located in Development
114	8.1	Morus alba	Mulberry	Poor	X	Located in Development
115	13.0	Juglans nigra	Black Walnut	Excellent	X	Located in Development
116	12.9	Juglans nigra	Black Walnut	Excellent	X	Located in Development
117	10.1	Morus alba	Mulberry	Poor	X	Located in Development
118	Dead	-	Dead	Dead	X	Dead
119	7.9	Morus alba	Mulberry	Excellent	X	Located in Development
120	8.0	Morus alba	Mulberry	Fair	X	Located in Development
121	Dead	-	Dead	Dead	X	Dead
122	7.5, 9.7	Morus alba	Mulberry	Fair	X	Located in Development
123	8.4	Juglans nigra	Black Walnut	Excellent	X	Located in Development
124	9.3	Juglans nigra	Black Walnut	Excellent	X	Located in Development
125	8.2	Celtis occidentalis	Hackberry	Excellent	X	Located in Development
126	8.5	Juglans nigra	Black Walnut	Excellent	X	Located in Development
127	8.7	Morus alba	Mulberry	Fair	X	Located in Development
128	7.2	Morus alba	Mulberry	Excellent	X	Located in Development
129	Dead	-	Dead	Dead	X	Dead
130	10.1	Juglans nigra	Black Walnut	Excellent	X	Located in Development
131	12.5	Juglans nigra	Black Walnut	Excellent	X	Located in Development
132	Dead	-	Dead	Dead	X	Dead
133	10.1	Morus alba	Mulberry	Good	X	Located in Development
134	12.5	Morus alba	Mulberry	Good	X	Located in Development
135	Dead	-	Dead	Dead	X	Located in Development
136	7.7	Juglans nigra	Black Walnut	Excellent	X	Located in Development
137	11.8	Juglans nigra	Black Walnut	Excellent	X	Located in Development
138	6.7	Morus alba	Mulberry	Excellent	X	Located in Development
139	12.6	Juglans nigra	Black Walnut	Good	X	Located in Development
140	Dead	-	Dead	Dead	X	Dead
141	10.2	Morus alba	Mulberry	Poor	X	Located in Development
142	7.0	Morus alba	Mulberry	Poor	X	Located in Development
143	Dead	-	Dead	Dead	X	Dead
144	Dead	-	Dead	Dead	X	Dead
145	Dead	-	Dead	Dead	X	Dead
146	8.5	Juglans nigra	Black Walnut	Excellent	X	Located in Development
147	6.7	Morus alba	Mulberry	Good	X	Located in Development
148	Dead	-	Dead	Dead	X	Dead
149	12.4	Morus alba	Mulberry	Good	X	Located in Development
150	7.2	Morus alba	Mulberry	Excellent	X	Located in Development
151	7.3	Celtis occidentalis	Hackberry	Excellent	X	Located in Development
152	12.6	Juglans nigra	Black Walnut	Excellent	X	Located in Development
153	7.4	Juglans nigra	Black Walnut	Good	X	Located in Development
154	7.3	Ulmus americana	American Elm	Excellent	X	Located in Development
155	9.3, 8.3	Juglans nigra	Black Walnut	Good	X	Located in Development
156	7.5	Acer negundo	Box Elder	Good	X	Located in Development
157	6.5	Juglans nigra	Black Walnut	Excellent	X	Located in Development
158	18.2	Juglans nigra	Black Walnut	Excellent	X	Located in Development
159	11.9	Celtis occidentalis	Hackberry	Excellent	X	Located in Development
160	10.8, 11.0, 14.0	Acer sacchariunum	Silver Maple	Poor	X	Located in Development
161	18.0	Acer negundo	Box Elder	Poor	X	Located in Development
162	18.3	Juglans nigra	Black Walnut	Excellent	X	Located in Development
163	10.7	Celtis occidentalis	Hackberry	Excellent	X	Located in Development
164	Dead	-	Dead	Dead	X	Dead
165	7.4	Morus alba	Mulberry	Poor	X	Located in Development
166	9.6	Morus alba	Mulberry	Poor	X	Located in Development
167	7.1	Juglans nigra	Black Walnut	Excellent	X	Located in Development
168	Dead	-	Dead	Dead	X	Dead
169	8.3	Juglans nigra	Black Walnut	Good	X	Located in Development
170	7.1	Juglans nigra	Black Walnut	Excellent	X	Located in Development
171	7.7, 15.1	Morus alba	Mulberry	Fair	X	Located in Development
172	8.7	Morus alba	Mulberry	Poor	X	Located in Development
173	Dead	-	Dead	Dead	X	Dead
174	13.2	Acer negundo	Boxelder	Poor	X	Located in Development
175	8.3	Morus alba	Mulberry	Poor	X	Located in Development
176	7.3	Ulmus spp	Elm species	Excellent	X	Located in Development
177	13.5	Juglans nigra	Black Walnut	Excellent	X	Located in Development
178	5.7	Morus alba	Mulberry	Good	X	Located in Development
179	5.4	Morus alba	Mulberry	Excellent	X	Located in Development
180	4.8	Morus alba	Mulberry	Good	X	Located in Development
181	6.2	Morus alba	Mulberry	Excellent	X	Located in Development
182	6.2	Morus alba	Mulberry	Fair	X	Located in Development
183	6.4	Morus alba	Mulberry	Good	X	Located in Development
184	7.0	Morus alba	Mulberry	Poor	X	Located in Development
185	6.0	Morus alba	Mulberry	Good	X	Located in Development
186	6.1	Morus alba	Mulberry	Excellent	X	Located in Development
187	13.2	Morus alba	Mulberry	Fair	X	Located in Development
188	9.8	Acer negundo	Boxelder	Poor	X	Located in Development
189	7.0	Celtis occidentalis	Hackberry	Excellent	X	Located in Development
190	5.7	Morus alba	Mulberry	Poor	X	Located in Development
191	Dead	-	Dead	Dead	X	Dead

Tag #	Diameter Inch	Species	Common Name	Condition	Removal	Reason for Removal
192	11.5	Acer negundo	Box Elder	Poor	X	Located in Development
193	6.3	Morus alba	Mulberry	Poor	X	Located in Development
194	6.0	Acer negundo	Box Elder	Good	X	Located in Development
195	10.8	Acer negundo	Box Elder	Good	X	Located in Development
196	7.3	Juglans nigra	Black Walnut	Excellent	X	Located in Development
197	15.8	Acer negundo	Box Elder	Good	X	Located in Development
198	Dead	-	Dead	Dead	X	Located in Development
199	Dead	-	Dead	Dead	X	Located in Development
200	9.0	Juglans nigra	Black Walnut	Good	X	Located in Development
301	10.1	Morus alba	Mulberry	Poor	X	Located in Development
302	10.4	Fraxinus spp	Ash	Poor	X	Located in Development
303	Dead	-	Dead	Dead	X	Dead
304	Dead	-	Dead	Dead	X	Dead
305	7.1	Acer negundo	Box Elder	Poor	X	Located in Development
306	17.23,8.25,5	Juglans nigra	Black Walnut	Good	X	Located in Development
307		Acer negundo	Box Elder	Poor	X	Located in Development
308		Acer negundo	Box Elder	Poor	X	Located in Development
309		Dead	-	Dead	X	Dead
310	10.6	Acer negundo	Box Elder	Fair	X	Located in Development
311	Dead	-	Dead	Dead	X	Dead
312	7.2	Acer negundo	Box Elder	Poor	X	Located in Development
313	Dead	-	Dead	Dead	X	Dead
314	7.2	Juglans nigra	Black Walnut	Excellent	X	Located in Development
315	Dead	-	Dead	Dead	X	Dead
316	8.6	Celtis occidentalis	Hackberry	Good	X	Located in Development
317	13.4	Acer negundo	Box Elder	Poor	X	Located in Development
318	6.1	Acer negundo	Box Elder	Poor	X	Located in Development
319	7.6	Acer negundo	Box Elder	Poor	X	Located in Development
320	Dead	-	Dead	Dead	X	Dead
321	Dead	-	Dead	Dead	X	Dead
322	12.0	Acer negundo	Box Elder	Fair	X	Located in Development
323	Dead	-	Dead	Dead	X	Dead
324	5.0	Acer negundo	Box Elder	Poor	X	Poor Condition
325	Dead	-	Dead	Dead	X	Dead
326	5.8	Morus alba	Mulberry	Good	X	Located in Development
327	21.0	Morus alba	Mulberry	Poor	X	Located in Development
328	6.8	Celtis occidentalis	Hackberry	Excellent	X	Located in Development
329	13.3	Morus alba	Mulberry	Good	X	Undesirable Species
330	19.3	Morus alba	Mulberry	Poor	X	Located in Development
331	19.9	Morus alba	Mulberry	Good	X	Located in Development
332	15.2	Morus alba	Mulberry	Fair	X	Undesirable Species
333	4.8	Morus alba	Mulberry	Fair	X	Undesirable Species
334	7.6	Morus alba	Mulberry	Good	X	Undesirable Species
335	Dead	-	Dead	Dead	X	Undesirable Species
336	6.2	Morus alba	Mulberry	Good	X	Undesirable Species
337	7.9	Celtis occidentalis	Hackberry	Excellent		
338	6.9	Morus alba	Mulberry	Good	X	Undesirable Species
339	6.1	Morus alba	Mulberry	Good	X	Located in Development
340	6.1	Morus alba	Mulberry	Fair	X	Located in Development
341	6.4	Morus alba	Mulberry	Good	X	Located in Development
342	5.4	Morus alba	Mulberry	Fair	X	Located in Development
343	16.5	Acer platanoides	Norway Maple	Good	X	Located in Development
344	8.5	Juglans nigra	Black Walnut	Excellent	X	Located in Development
345	9.7	Juglans nigra	Black Walnut	Excellent	X	Located in Development
346	5.8	Fraxinus spp	Ash	Poor	X	Poor Condition
347	7.5	Populus deltoides	Cottonwood	Fair	X	Located in Development
348	13.5	Populus deltoides	Cottonwood	Good	X	Located in Development
349	7.7	Populus deltoides	Cottonwood	Poor	X	Located in Development
350	9.4	Salix spp	Willow	Poor	X	Located in Development
351	6.0,5.3	Fraxinus spp	Ash	Poor	X	Located in Development
352	17.5	Acer negundo	Box Elder	Poor	X	Poor Condition
353	12.0	Morus alba	Mulberry	Good	X	Undesirable Species
354	6.9	Juglans nigra	Black Walnut	Good	X	Located in Development
355	10.5	Acer negundo	Box Elder	Fair	X	Undesirable Species
356	6.4	Acer negundo	Box Elder	Good	X	Undesirable Species
357	8.0	Juglans nigra	Black Walnut	Good	X	Located in Development
358	10.8	Acer negundo	Box Elder	Good	X	Undesirable Species
359	Dead	-	Dead	Dead	X	Dead
A	4.8	Morus alba	Mulberry	Excellent	X	Undesirable Species
B	7.1	Celtis occidentalis	Hackberry	Excellent	X	Located in Development
C	5.7	Celtis occidentalis	Hackberry	Excellent		
D	5.0	Fraxinus spp	Ash	Poor	X	Located in Development
E	4.0	Fraxinus spp	Ash	Poor	X	Located in Development
F	4.7	Fraxinus spp	Ash	Poor	X	Poor Condition
G	4.9	Fraxinus spp	Ash	Poor	X	Poor Condition
H	4.2	Morus alba	Mulberry	Good	X	Undesirable Species
I	6.4	Morus alba	Mulberry	Good	X	Located in Development
J	4.9	Prunus serotina	Black Cherry	Good		
K	15.6	Morus alba	Mulberry	Poor	X	Located in Development
L	6.4	Morus alba	Mulberry	Poor	X	Poor Condition
M	4.8	Morus alba	Mulberry	Poor	X	Poor Condition
N	6.7	Juglans nigra	Black Walnut	Excellent	X	Located in Development
O	4.5	Celtis occidentalis	Hackberry	Good	X	Located in Development
P	5.5	Juglans nigra	Black Walnut	Good	X	Located in Development
Q	6.8	Juglans nigra	Black Walnut	Excellent	X	Located in Development
R	6.0	Celtis occidentalis	Hackberry	Excellent	X	Located in Development
S	16.5	Morus alba	Mulberry	Poor	X	Located in Development
T	9.0	Juglans nigra	Black Walnut	Excellent	X	Located in Development
U	5.3	Morus alba	Mulberry	Good	X	Located in Development
V	7.2	Celtis occidentalis	Hackberry	Excellent	X	Located in Development
W	8.5	Morus alba	Mulberry	Fair	X	Located in Development
X	5.8	Celtis occidentalis	Hackberry	Good	X	Located in Development
Y	6.6	Celtis occidentalis	Hackberry	Good	X	Located in Development
Z	6.2, 5.8, 4.4	Celtis occidentalis	Hackberry	Good	X	Located in Development
AA	6.0	Celtis occidentalis	Hackberry	Good	X	Located in Development
AB	14.1	Juglans nigra	Black Walnut	Excellent		
AC	6.7	Juglans nigra	Black Walnut	Excellent	X	Located in Development
AD	6.7	Juglans nigra	Black Walnut	Excellent	X	Located in Development
AE	14.1	Juglans nigra	Black Walnut	Excellent	X	Located in Development
AF	5.9	Juglans nigra	Black Walnut	Fair	X	Located in Development
AG	9.8	Juglans nigra	Black Walnut	Excellent	X	Located in Development
AH	4.4	Celtis occidentalis	Hackberry	Excellent	X	Located in Development
AI	11.7	Juglans nigra	Black Walnut	Excellent	X	Located in Development
AJ	4.9	Celtis occidentalis	Hackberry	Excellent	X	Located in Development
AK	13.6	Juglans nigra	Black Walnut	Excellent	X	Located in Development
AL	7.0	Morus alba	Mulberry	Fair	X	Located in Development
AM	4.5	Picea pungens	Colorado Spruce	Poor	X	Poor Condition
AN	5.1	Picea pungens	Colorado Spruce	Poor	X	Poor Condition
AO	26.0	Juglans nigra	Black Walnut	Poor	X	Located in Development



1 6' Vinyl Fence
SCALE: NTS



GENERAL NOTES: LANDSCAPE

- Notes indicated on grading plans shall pertain to landscape plans. Final grade of planting beds shall be as per grading plan.
- The landscape contractor shall be responsible for making themselves familiar with all underground utilities and structures.
- All existing plant material and trees shall be saved and protected unless otherwise noted. Contractor to protect new and existing trees and landscaping from damage and shall restore all areas disturbed as a result of construction.
- Plant material shall be supplied from Northern Illinois nursery stock, shall be dug the planting season it is installed, and shall conform to the American Association of Nurseryman's standards.
- Plant material shall be size and type specified. Substitution of plant material shall be on a case by case basis and approved in writing by the Owner's Representative. In no case shall plant material be smaller than indicated in the plans.
- Do not willfully proceed with plantings as designed when it is obvious that obstructions and/or grade differences exist that may not have been known during the design process. Such conditions shall be immediately brought to the attention of the Owner's Representative.
- All plant material shall be inspected and approved by the Owner's Representative prior to the installation of any and all plant material.
- Plant locations shall be flagged in field with Owner's Rep. Final location of all plant material shall be subject to approval of the Owner's Representative prior to digging any holes. The landscape contractor is responsible for providing Owner's Representative with 48 hour minimum advance notice prior to planting.
- Plants shall be watered on the day they are planted and maintained with watering until final acceptance of the project.
- Apply a pre-emergent as per manufacturer's specification prior to installing mulch.
- Beds and tree rings (6' diameter) shall have 3" of hardwood shredded mulch applied and a 4" deep spade edge at lawn. Trees that are not located in beds, shall have a tree ring.
- Landscape plant material shall be guaranteed for 12 months from final acceptance. Any plant 1/3 dead or more shall be replaced under the guarantee.
- Contractor to prepare landscape beds by roto-tilling 2" of Mushroom Compost into new beds. Do not add compost nor roto-till within drip line of existing trees.
- Lawn Seeding shall be under favorable weather conditions, and shall follow dates in specification.
- Turf mixes shall be installed and lawn established at all disturbed areas.
- Do not overseed into mulch beds and paving.
- Contractor shall restore all areas disturbed as a result of construction.
- Jet Brite Car Wash shall maintain all onsite landscaping including the area east of the soundwall.

LEGEND

- Shade Tree
- Ornamental Tree
- Shrub
- Ornamental Grass
- Perennial and Groundcover (hatch symbol varies)
- 6' Vinyl Fence

PROJECT

Jet Brite Car Wash

Route 59 and 83rd Street
Naperville, Illinois 60564

PROJECT TEAM



uplandDesign Ltd

Park Planning and Landscape Architecture
1229 N North Branch St, Chicago, Illinois 60642
24042 Lockport St, Plainfield, Illinois 60544
815-254-0091 www.uplanddesign.com

SHEET TITLE

Landscape Plan

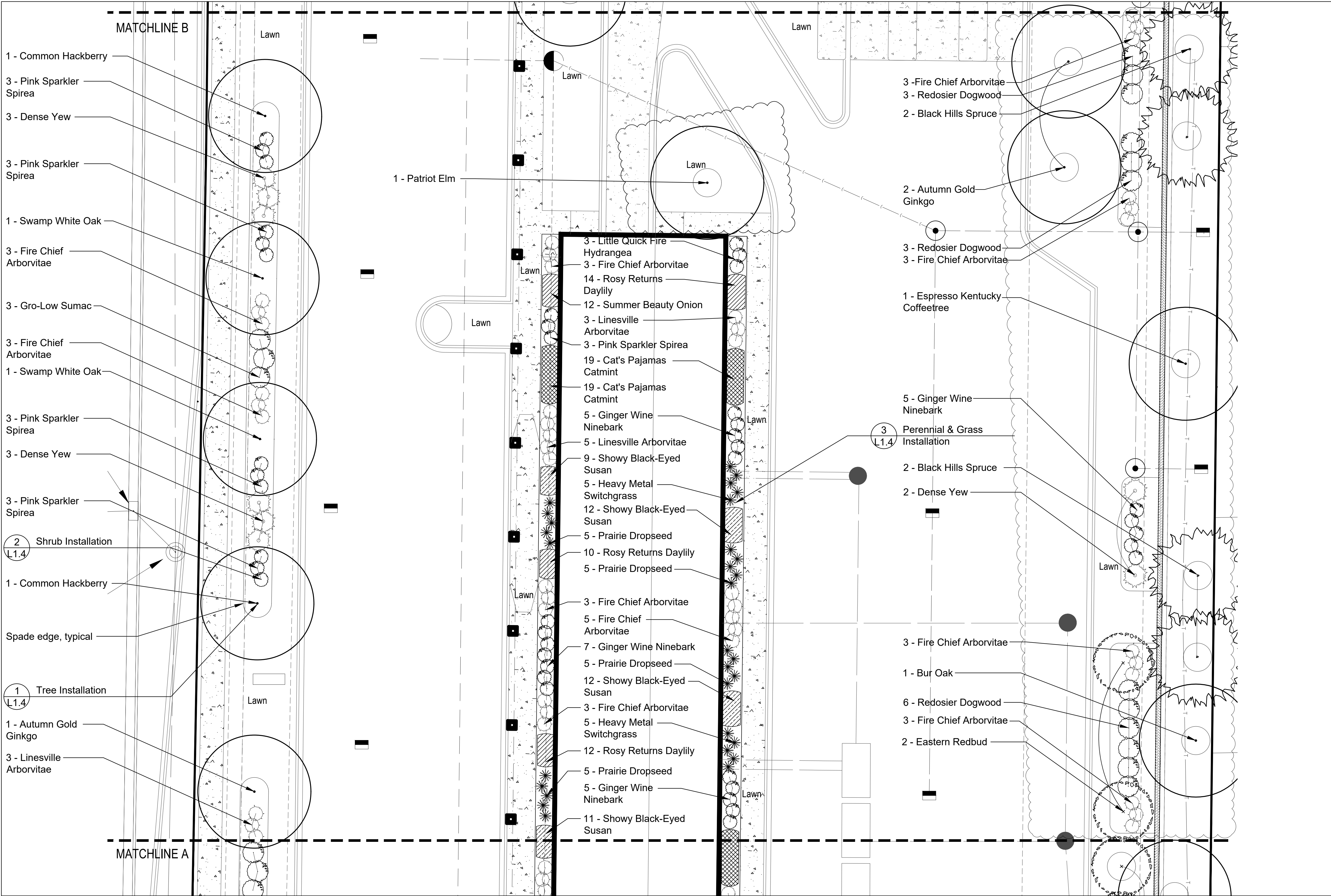
SHEET NUMBER

L1.0

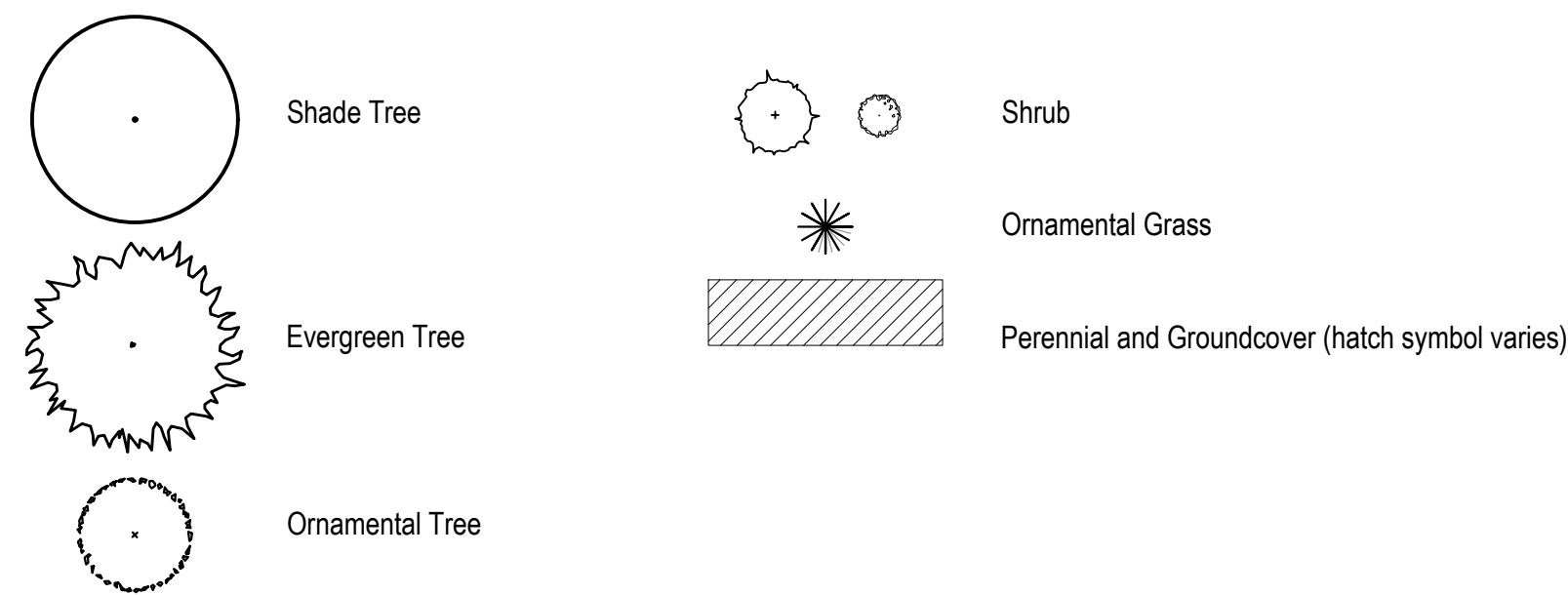
DRAW / REVISION

LD/DW	Resubmittal	14DEC2022
LD/LR	Resubmittal	18JAN2023
LD/AB	Resubmittal	07FEB2023
LD	Resubmittal	02MAR2023
LD/MO	Resubmittal	12JULY2023
LD/MO	Resubmittal	10AUG2023

Project Number 1095
© Copyright 2023 Upland Design Ltd.
W:\1095-Jet Brite Car Wash Naperville-Jet Brite\30-CD-Files
PLOT: UPLAND 2023



LEGEND



SCALE: 1" = 10'-0"

0 5' 10' 20' 30'

PROJECT

Jet Brite Car Wash

Route 59 and 83rd Street
Naperville, Illinois 60564

PROJECT TEAM



uplandDesign Ltd

Park Planning and Landscape Architecture
1229 N North Branch St, Chicago, Illinois 60642
24042 Lockport St, Plainfield, Illinois 60544
815-254-0091 www.uplanddesign.com

SHEET TITLE

Landscape Plan

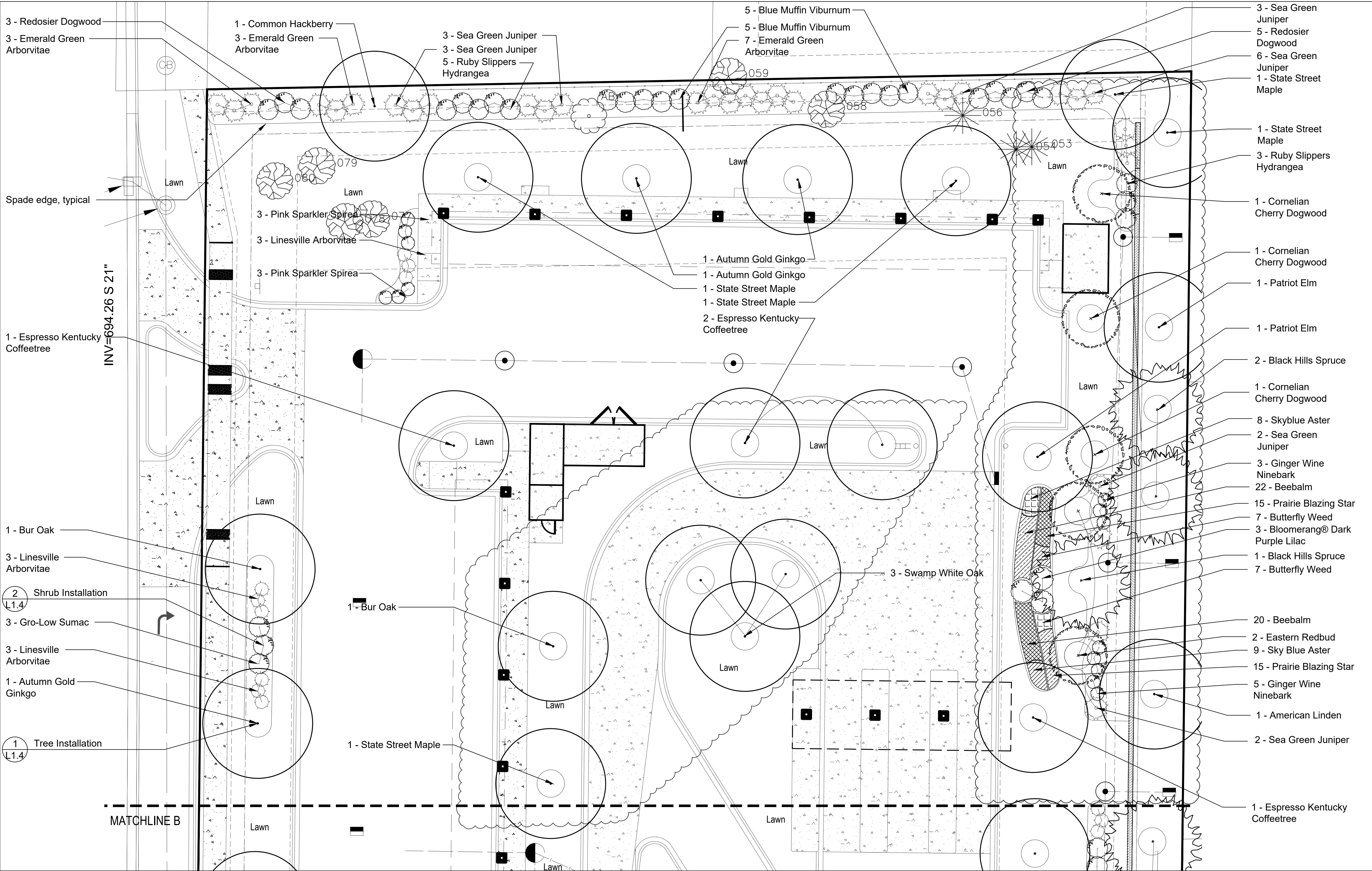
SHEET NUMBER

L1.2

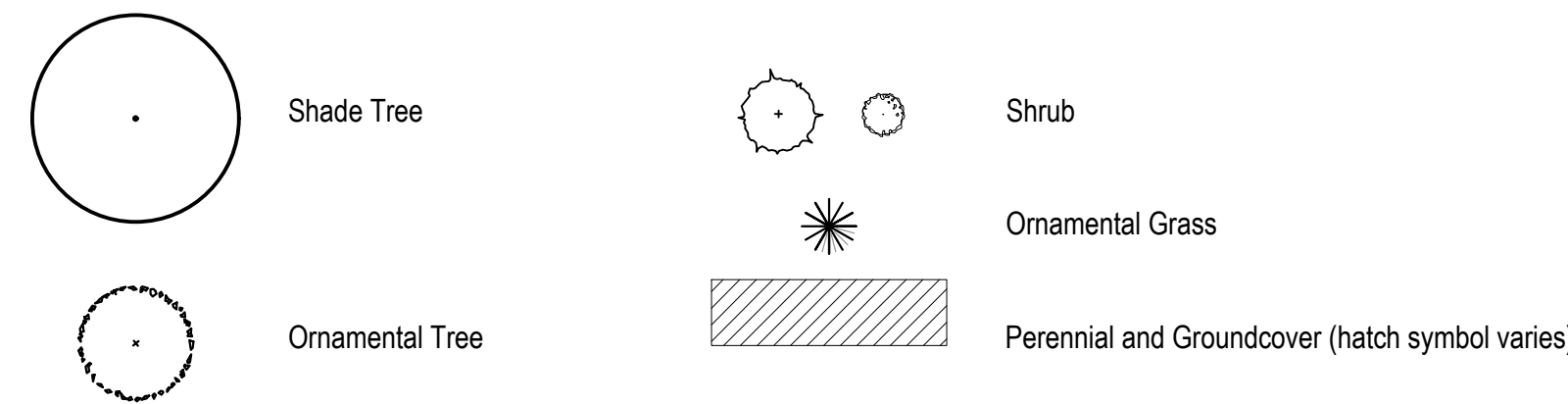
DRAW / REVISION

LD/DW	Resubmittal	14DEC2022
LD/LR	Resubmittal	18JAN2023
LD/AB	Resubmittal	07FEB2023
LD	Resubmittal	02MAR2023
LD/MO	Resubmittal	12JULY2023
LD/MO	Resubmittal	10AUG2023

Project Number 1095
© Copyright 2023 Upland Design Ltd.
W:\1095-Jet Brite Car Wash Naperville-Jet Brite\30-CD-Files
PLOT: UPLAND 2023



LEGEND



SCALE: 1" = 10'-0"

PROJECT

Jet Brite Car Wash

Route 59 and 83rd Street
Naperville, Illinois 60564

PROJECT TEAM



uplandDesign Ltd

Park Planning and Landscape Architecture
1229 N North Branch St, Chicago, Illinois 60642
24042 Lockport St, Plainfield, Illinois 60544
815-254-0091 www.uplanddesign.com

SHEET TITLE

Landscape Plan

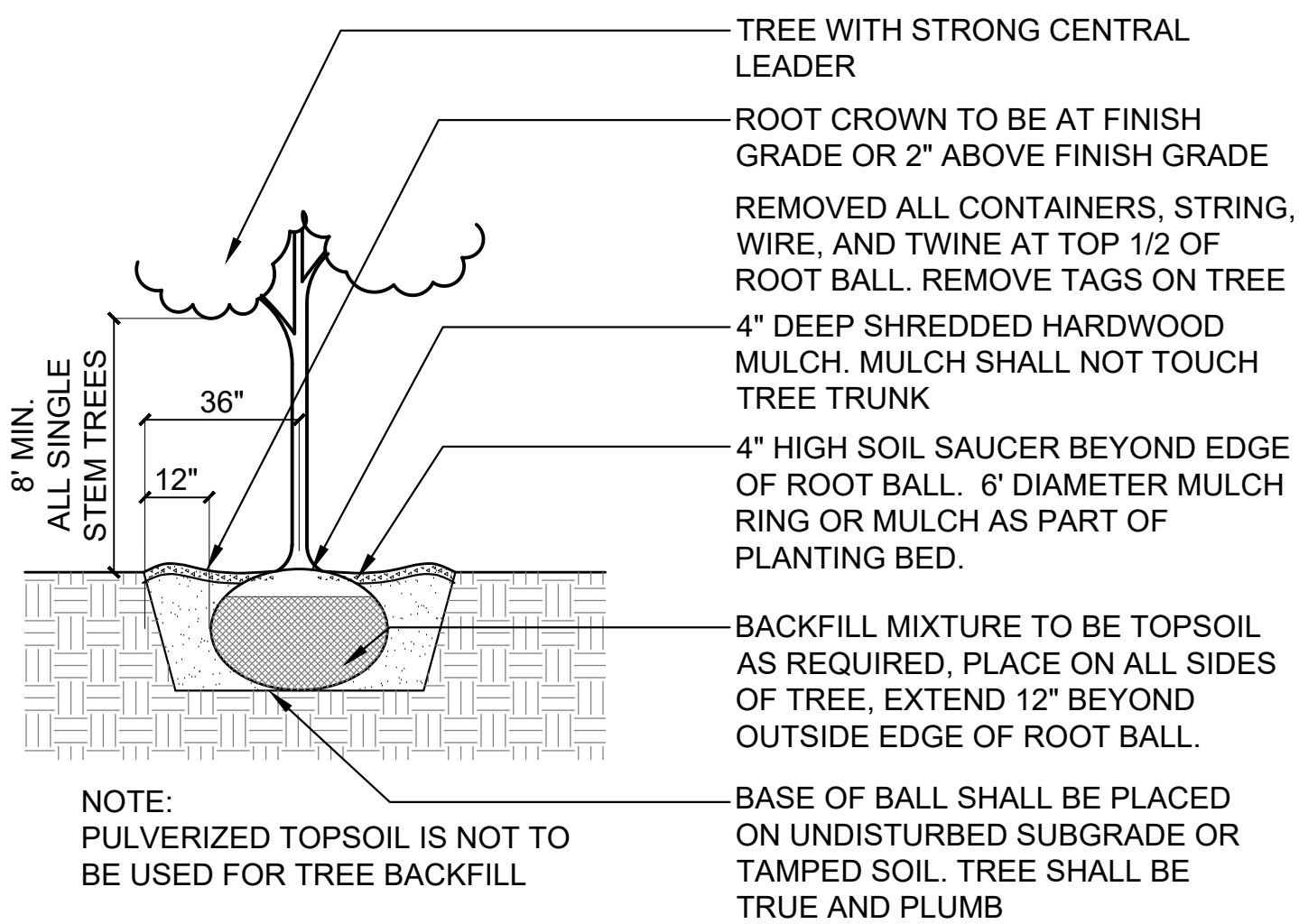
SHEET NUMBER

L1.3

DRAW / REVISION

LD/DW	Resubmittal	14DEC2022
LD/LR	Resubmittal	18JAN2023
LD/AB	Resubmittal	07FEB2023
LD	Resubmittal	02MAR2023
LD/MO	Resubmittal	12JULY2023
LD/MO	Resubmittal	10AUG2023

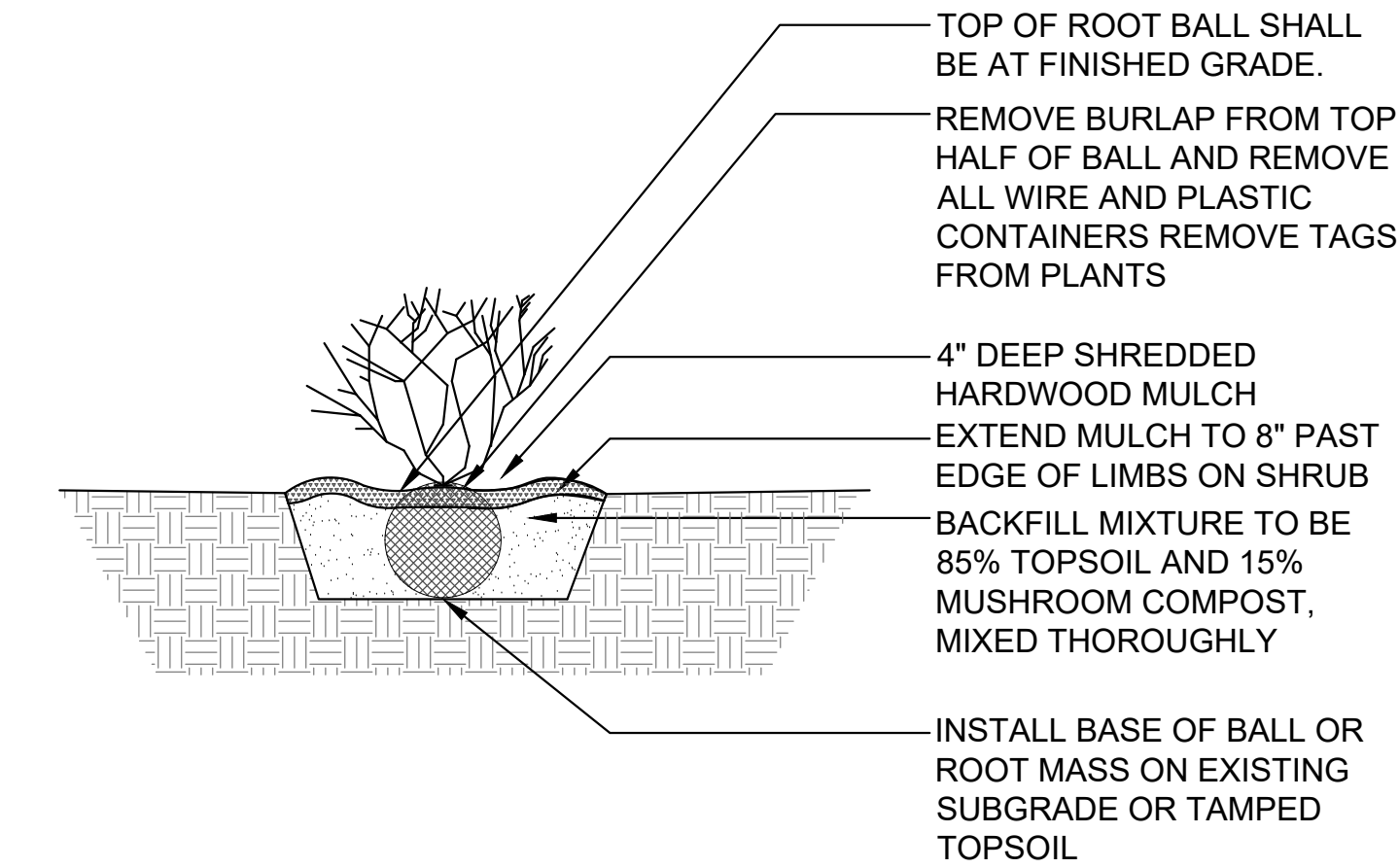
Project Number 1095
© Copyright 2023 Upland Design Ltd.
W:\1095-Jet Brite Car Wash Naperville-Jet Brite\30-CD-Files
PLOT: UPLAND 2023



1 Tree Installation

SCALE: N.T.S.

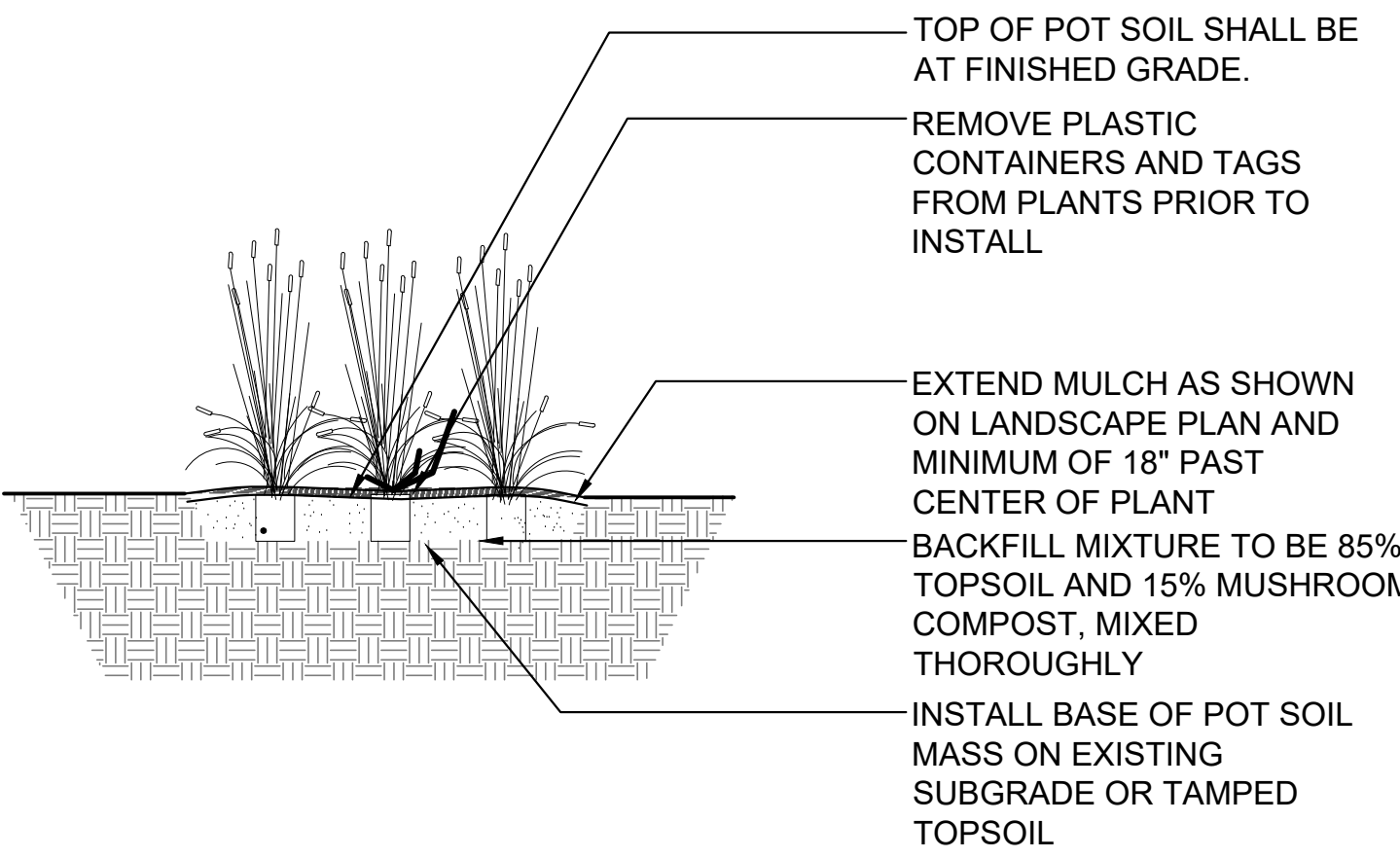
d-plant-tree_12



2 Shrub Installation

SCALE: N.T.S.

d-plant-shrub_12



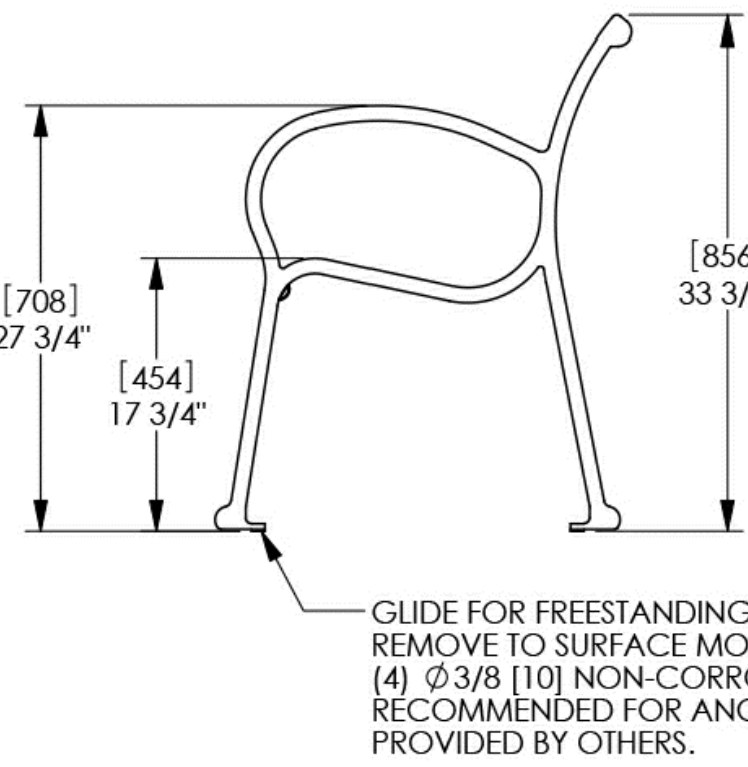
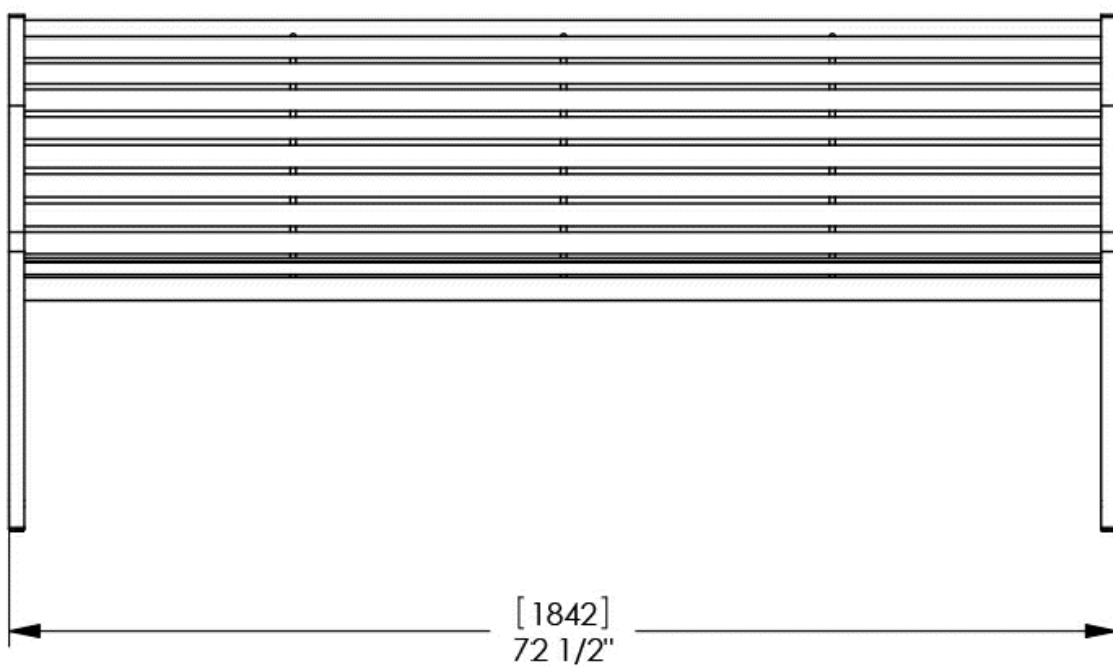
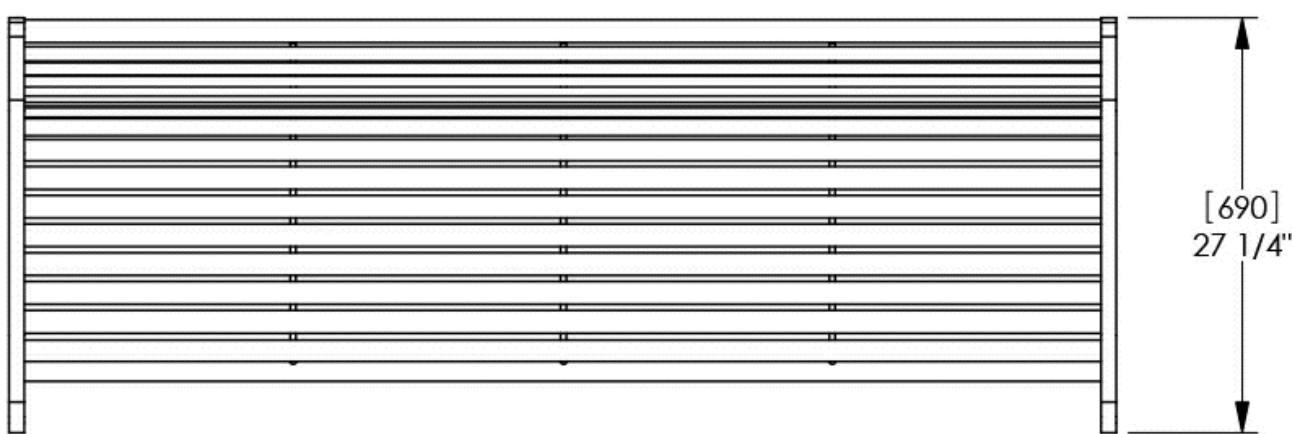
3 Perennial & Ornamental Grass Installation

SCALE: 1" = 1'-0"

d-perennials

REQUIREMENT CHART

Chapter 10 Landscape, Screening and Tree Preservation 3.2.3. Parkway Trees				
Location/Distance	Requirement	Calculations	Proposed Trees	
IL Route 59: 438' 56' Entry Drive	1 shade tree per 40'	(438'-56')/40'= 9.55 Parkway Trees	10 Shade Trees	
83rd Street: 211' 26' Entry Drive	1 shade tree per 40'	(211'-26')/40'= 4.62 Parkway Trees	5 Ornamental Trees due to overhead wires	
Chapter 10 Landscape, Screening and Tree Preservation 4.1. Perimeter Landscaping Trees				
Location/Distance	Requirement	Calculations	Proposed Trees	Proposed Shrubs
Property Line: 1337' 56' Entry Drive 26' Entry Drive	1 Shade tree per 70'	(1337'-82')/70'= 17.9 Perimeter Trees	18 Shade Trees	
Chapter 10 Landscape, Screening and Tree Preservation 4.2.1. Foundation Plantings				
Location/Distance	Requirement	Calculations		Proposed Shrubs
Plantable Foundation: 344'	2' wide planting bed minimum	344'*2'= 688 sq ft of planting beds		62
Chapter 10 Landscape, Screening and Tree Preservation 4.3.2. Nonresidential Adjacent to Residential Rear Yards				
Location/Distance	Requirement	Calculations		Proposed Shrubs
North side of Property Line: 215'	Continuous landscape buffer 6' height minimum	215' = continuous 6' minimum shrubs		48 Shrubs
Chapter 10 Landscape, Screening and Tree Preservation 5.1.1. Parking Lot Landscaping Interior				
Location/Distance	Requirement	Calculations	Proposed Trees	
Parking Lot Islands	Landscape islands so that no more than 20 adjacent parking spots in a single row. Islands to be minimum 130' sq and 1 Shade Tree per 130' square of landscape island. Minimum 50% of landscape island to be planted with groundcover, shrubs, or turf grass. No taller than 30'.	5 islands*1 shade tree = 5 Shade Trees	5 Shade Trees	
Chapter 10 Landscape, Screening and Tree Preservation 5.2.3.2. Perimeter Parking Lot Landscaping Across from Nonresidential Property				
Location/Distance	Requirement	Calculations		Proposed Shrubs
West Parking Lot Perimeter: 283'	5' wide planting bed minimum at 50% of parking lot	283'*50%= 141.5' of 5' wide planting bed		45 Shrubs
Chapter 10 Landscape, Screening and Tree Preservation 5.2.4.1. Perimeter Parking Lot Landscaping Abutting Residential Property				
Location/Distance	Requirement	Calculations	Proposed Trees	Proposed Shrubs
North Side Parking Lot Perimeter: 131'	5' wide planting bed minimum at 50% of parking lot. 6' tall plants minimum 50% Evergreen 50% Deciduous Shrubs And 1 Shade Tree Per 35'	131'*50% = 65.5' of 5' wide planting bed, 6' tall shrubs 131'/35= 3.7 Parking Perimeter Trees	4 Shade Trees	Met with 4.3.2. Nonresidential Adjacent to Residential Rear Yards landscape buffer
Chapter 10 Landscape, Screening and Tree Preservation 6. Screening of Service Drives				
Location/Distance	Requirement			Proposed Shrubs
East Side Service Drive Adjacent to Residential: 446'	100% Screened by 6' board on board fence. No additional landscaping shall be required in these areas	446' of Board on Board Fence Additional 50% shrubs provided along fence		Additional: 83 Shrubs

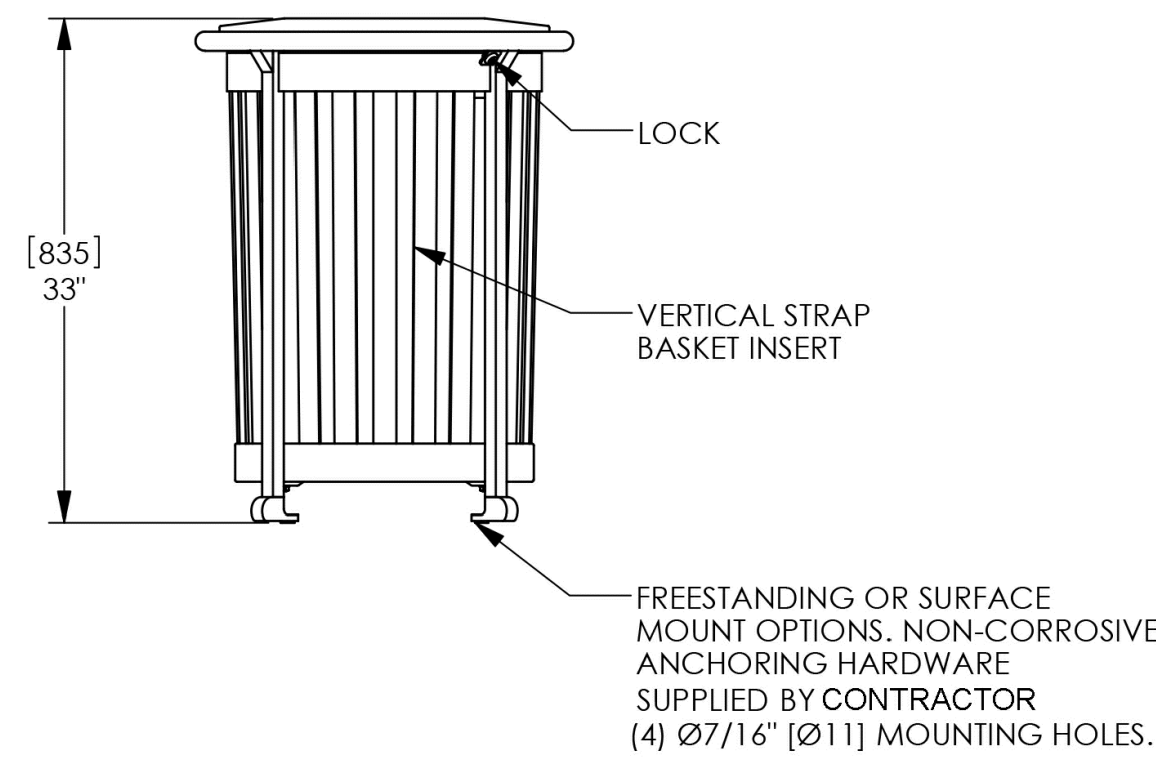
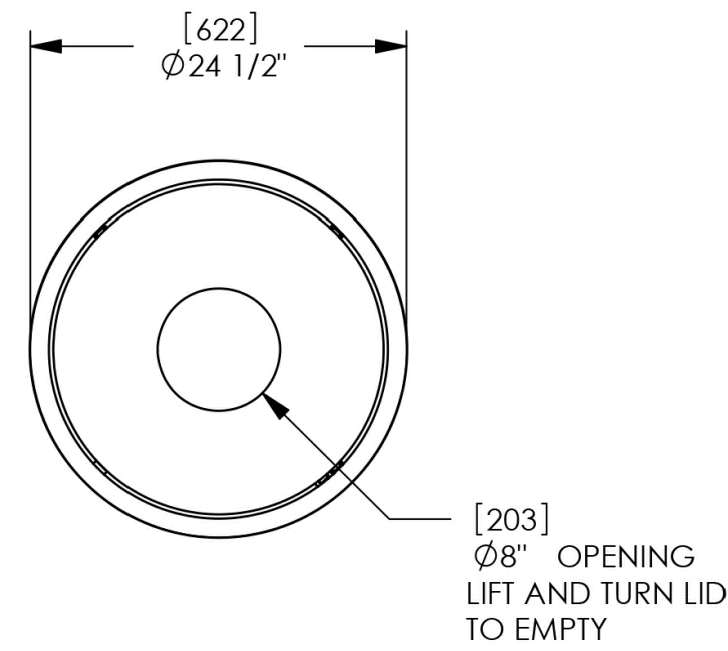


4 Backed Bench (Surface Mount)

SCALE: NTS

PLANT LIST

QTY	SIZE	BOTANICAL NAME	COMMON NAME
Deciduous Shade Trees - Balled and Burlap			
5	2.5" cal.	<i>Acer miyabei</i> 'Morton'	State Street Maple
5	2.5" cal.	<i>Celtis occidentalis</i>	Common Hackberry
7	2.5" cal.	<i>Ginkgo biloba</i> 'Autumn Gold'	Autumn Gold Ginkgo
6	2.5" cal.	<i>Gymnocladus dioica</i> 'Espresso'	Espresso Kentucky Coffeetree
7	2.5" cal.	<i>Quercus bicolor</i>	Swamp White Oak
4	2.5" cal.	<i>Quercus macrocarpa</i>	Bur Oak
4	2.5" cal.	<i>Tilia americana</i>	American Linden
4	2.5" cal.	<i>Ulmus x 'Patriot'</i>	Patriot Elm
42			
Evergreen Trees - Balled and Burlap			
7	2.5" cal.	<i>Picea Glauca</i> 'Densata'	Black Hills Spruce
Ornamental Trees - Balled and Burlap			
8	6' ht.	<i>Cercis canadensis</i>	Eastern Redbud
3	6' ht.	<i>Cornus mas</i>	Cornelian Cherry Dogwood
5	6' ht.	<i>Ostrya virginiana</i>	Ironwood
16			
Evergreen Shrubs - Balled and Burlap or Pot			
19	36" ht. x 36" wt.	<i>Juniperus chinensis</i> 'Sea Green'	Sea Green Juniper
12	36" ht. x 36" wt.	<i>Taxus x media</i> 'Densiformis'	Dense Yew
6	36" ht. x 36" wt.	<i>Taxus x media</i> 'Tauntonii'	Taunted Yew
13	24" ht. x 24" wt.	<i>Thuja occidentalis</i> 'Emerald Green'	Emerald Green Arborvitae
45	24" ht. x 24" wt.	<i>Thuja occidentalis</i> 'Fire Chief'	Fire Chief Arborvitae
31	24" ht. x 24" wt.	<i>Thuja occidentalis</i> 'Linesville'	Linesville Arborvitae
126			
Deciduous Shrubs - Balled and Burlap or Pot			
20	24" ht. x 24" wt.	<i>Cornus sericea</i> 'Isanti'	Redosier Dogwood
12	18" ht. x 18" wt.	<i>Hydrangea paniculata</i> 'SMHPLQF'	Little Quick Fire Hydrangea
10	24" ht. x 24" wt.	<i>Hydrangea quercifolia</i> 'Ruby Slippers'	Ruby Slippers Hydrangea
33	24" ht. x 24" wt.	<i>Physocarpus opulifolius</i>	Ginger Wine Ninebark
9	24" ht. x 24" wt.	<i>Rhus aromatica</i> 'Grow Low'	Gro-Low Sumac
24	18" ht. x 18" wt.	<i>Spiraea betulifolia</i> 'COURISPIOT'	Pink Sparkler Spirea
6	18" ht. x 18" wt.	<i>Syringa</i>	Bloomerang Dk Purple Lilac
13	36" ht. x 36" wt.	<i>Viburnum dentatum</i> 'Christom'	Blue Muffin Viburnum
127			
Perennials and Ornamental Grasses - Pot			
24	#1 Cont.	<i>Allium</i> 'Summer Beauty'	Summer Beauty Onion
27	#1 Cont.	<i>Asclepias tuberosa</i>	Butterfly Weed
16	#1 Cont.	<i>Dalea purpurea</i>	Purple Prairie Clover
50	#1 Cont.	<i>Hemerocallis</i> 'Rosy Returns'	Rosy Returns Daylily
45	#1 Cont.	<i>Liatris pycnostachya</i>	Prairie Blazing Star
84	#1 Cont.	<i>Monarda didyma</i> 'Raspberry Wine'	Beebalm
76	#1 Cont.	<i>Nepeta racemosa</i> 'Cat's Pajamas'	Cat's Pajamas Catmint
44	#1 Cont.	<i>Rudbeckia fulgida</i> var. <i>speciosa</i>	Showy Black-Eyed Susan
10	#1 Cont.	<i>Panicum virgatum</i> 'Heavy Metal'	Heavy Metal Switchgrass
20	#1 Cont.	<i>Sporobolus heterolepis</i>	Prairie Dropseed
34	#1 Cont.	<i>Symphyotrichum oolentangiense</i>	Skyblue Aster
396			



5 Trash Receptacle (Surface Mount)

SCALE: NTS

PROJECT

Jet Brite Car Wash

Route 59 and 83rd Street
Naperville, Illinois 60564

PROJECT TEAM



uplandDesign Ltd

Park Planning and Landscape Architecture
1229 N North Branch St, Chicago, Illinois 60642
24042 Lockport St, Plainfield, Illinois 60544
815-254-0091 www.uplanddesign.com

SHEET TITLE

Landscape Plan

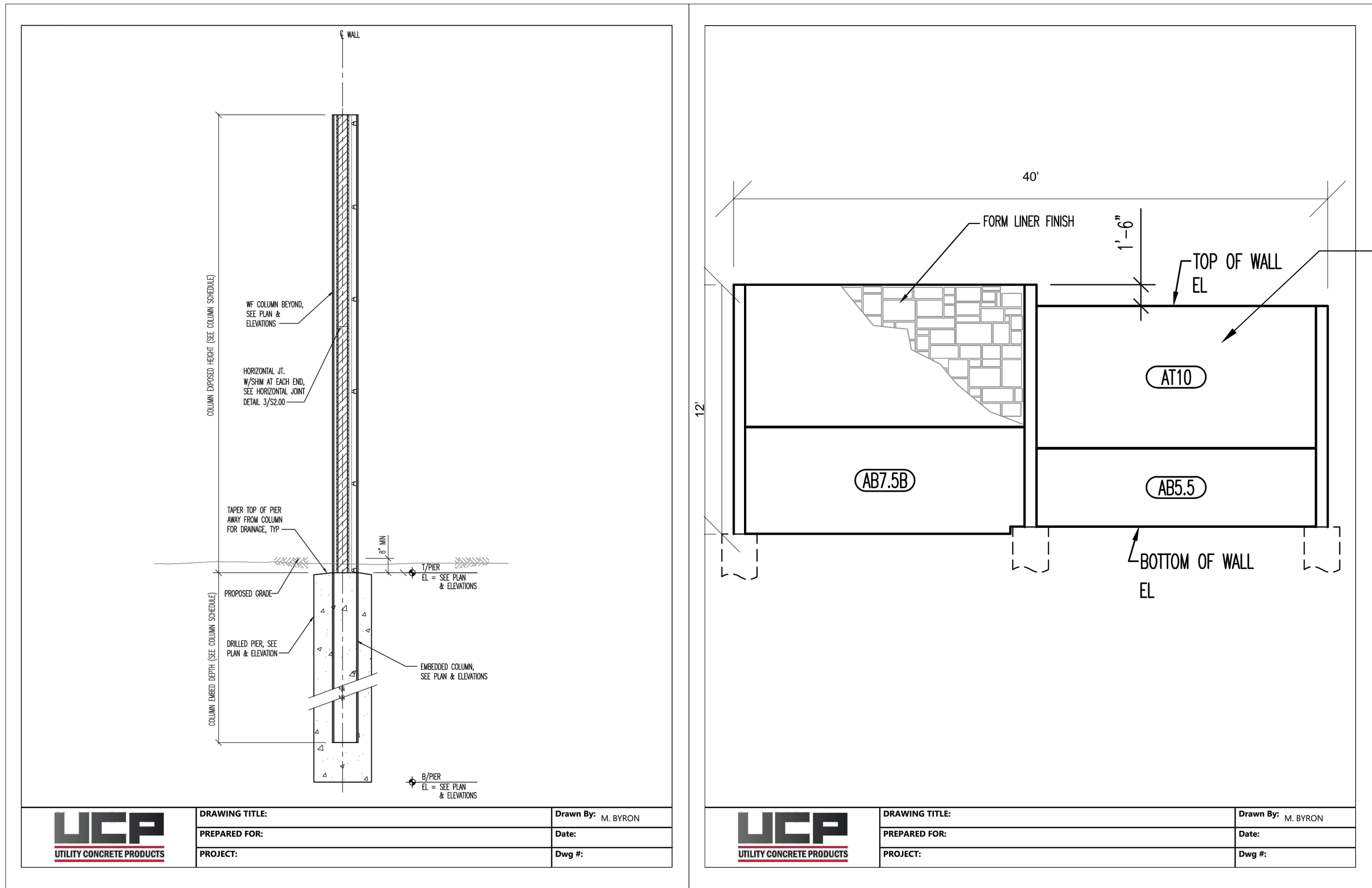
SHEET NUMBER

L1.4

DRAW / REVISION

LD/DW	Resubmittal	14DEC2022
LD/LR	Resubmittal	18JAN2023
LD/AB	Resubmittal	07FEB2023
LD	Resubmittal	02MAR2023
LD/MO	Resubmittal	12JULY2023
LD/MO	Resubmittal	10AUG2023

Project Number 1095
© Copyright 2023 Upland Design Ltd.
W:\1095-Jet Brite Car Wash Naperville-Jet Brite\30-CD-Files
PLOT: UPLAND 2023



NOTE:
1. DETAIL FOR PLANNING REVIEW ONLY.
NOT FOR CONSTRUCTION. STRUCTURAL
DESIGN BY OTHERS.

1 12' Sound Wall
SCALE: NTS

PROJECT
Jet Brite Car Wash
Route 59 and 83rd Street
Naperville, Illinois 60564

PROJECT TEAM
uplandDesign
uplandDesign Ltd
Park Planning and Landscape Architecture
1229 N North Branch St, Chicago, Illinois 60642
24042 Lockport St, Plainfield, Illinois 60544
815-254-0091 www.uplanddesign.com

SHEET TITLE
Landscape Plan
SHEET NUMBER **L1.5**

DRAW / REVISION		
LD/DW	Resubmittal	14DEC2022
LD/LR	Resubmittal	18JAN2023
LD/AB	Resubmittal	07FEB2023
LD	Resubmittal	02MAR2023
LD/MO	Resubmittal	12JULY2023
LD/MO	Resubmittal	10AUG2023

Project Number 1095
© Copyright 2023 Upland Design Ltd.
W:\1095-Jet Brite Car Wash Naperville-Jet Brite\30-CD-Files
10/1/2023