

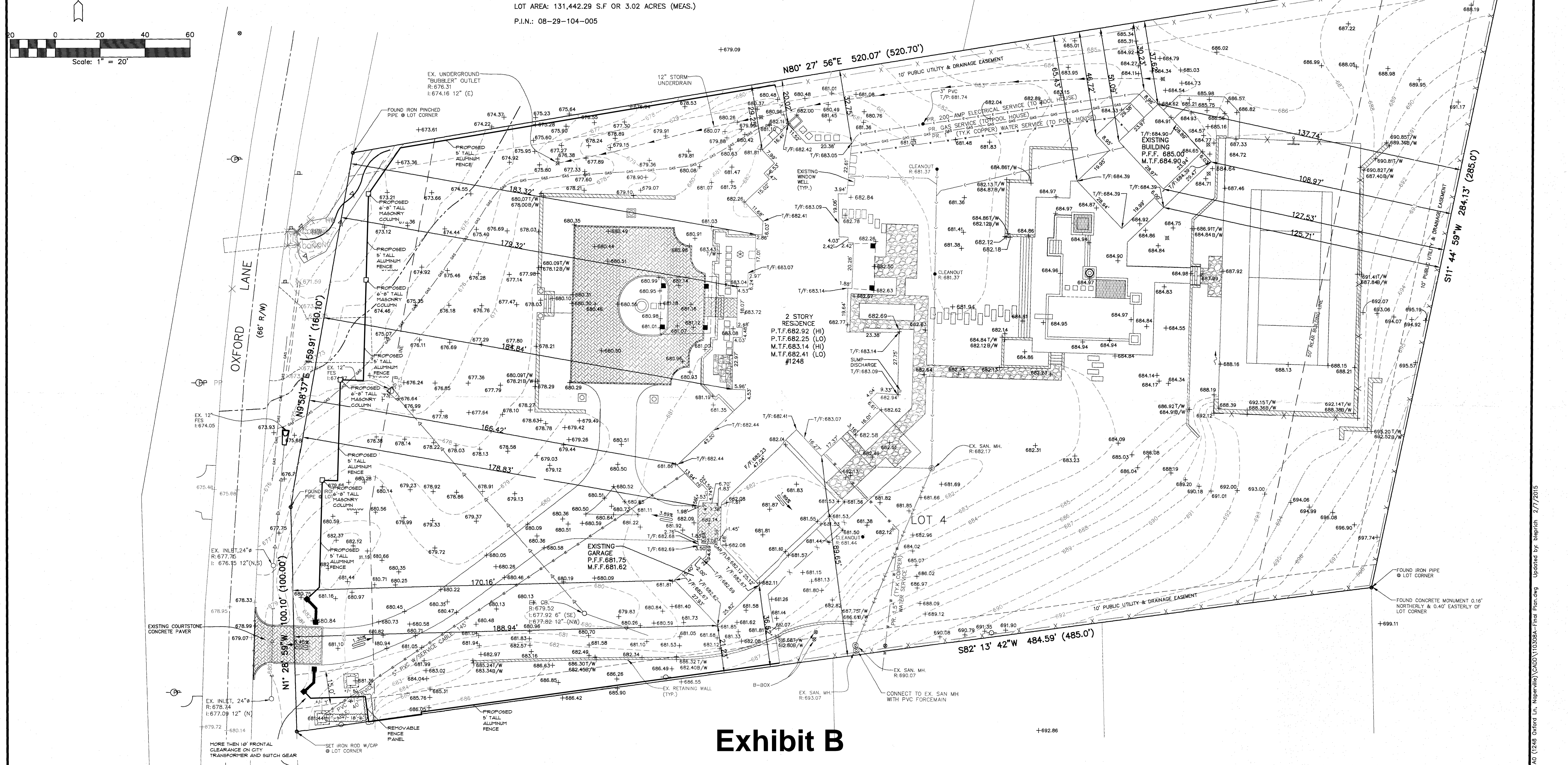
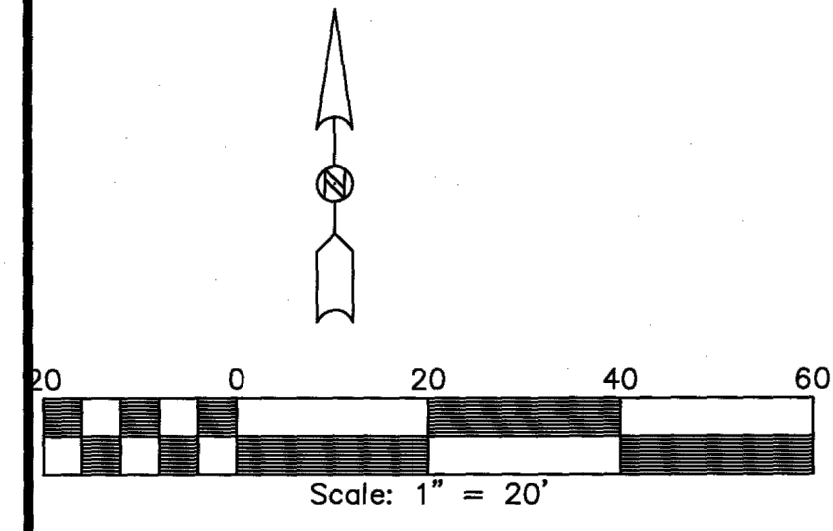
# FINAL GRADING PLAN

LOT 4 IN BLOCK 2 IN ARTHUR T. MCINTOSH AND COMPANY'S RIVER GROVE SUBDIVISION, BEING A SUBDIVISION IN PART OF SECTIONS 29 AND 30, TOWNSHIP 38 NORTH, RANGE 10 EAST OF THE THIRD PRINCIPAL MERIDIAN, ACCORDING TO THE PLAT THEREOF RECORDED JANUARY 14, 1926 AS DOCUMENT NO. 206178, IN DUPAGE COUNTY, ILLINOIS.

COMMONLY KNOWN AS: 1248 OXFORD LANE, NAPERVILLE, ILLINOIS

LOT AREA: 131,442.29 S.F OR 3.02 ACRES (MEAS.)

P.I.N.: 08-29-104-005



## Exhibit B

**BENCHMARKS:**  
 REFERENCE: DUPAGE COUNTY BENCHMARK #J30002 (NGVD 1929)  
 BRONZE DISK IN WING WALL OF BRIDGE OVER THE WEST BRANCH OF THE DUPAGE RIVER ON THE SOUTH SIDE OF 75TH STREET  
 ELEVATION = 664.19'  
 SITE BENCHMARK #1  
 TOP OF IRON PIPE AT THE NORTHWEST CORNER OF THE SUBJECT SITE.  
 ELEVATION = 672.11'  
 SITE BENCHMARK #2  
 TOP OF IRON PIPE AT THE SOUTHWEST CORNER OF THE SUBJECT SITE.  
 ELEVATION = 680.62'

It's smart It's free It's the law

**Call before you dig**  
 800.892.0123

ERA JOB #: 110308A  
 PREPARED FOR: MUELLNER CONSTRUCTION, INC.  
 G:\PROJECTS\MUELLNER CONSTRUCTION INC\110308A\CADD\110308A-FINAL PLAN.DWG

**ENGINEERING RESOURCE ASSOCIATES, INC.**  
 CONSULTING ENGINEERS, SCIENTISTS & SURVEYORS

35701 WEST AVENUE, SUITE 150  
 WARRENVILLE, ILLINOIS 60555  
 PHONE (630) 393-3060  
 FAX (630) 393-2152

3002 CROSSING COURT  
 CHAMPAIGN, ILLINOIS 61822  
 PHONE (217) 351-6268  
 FAX (217) 355-1902

**DRAWN BY:** BL  
**CHECKED BY:** SB  
**APPROVED BY:** JG

Updated by: bierlich 2/7/2015  
 G:\PROJECTS\MueLLner Construction inc\110308A\1248 Oxford Ln, Naperville\110308A-Final Plan.dwg