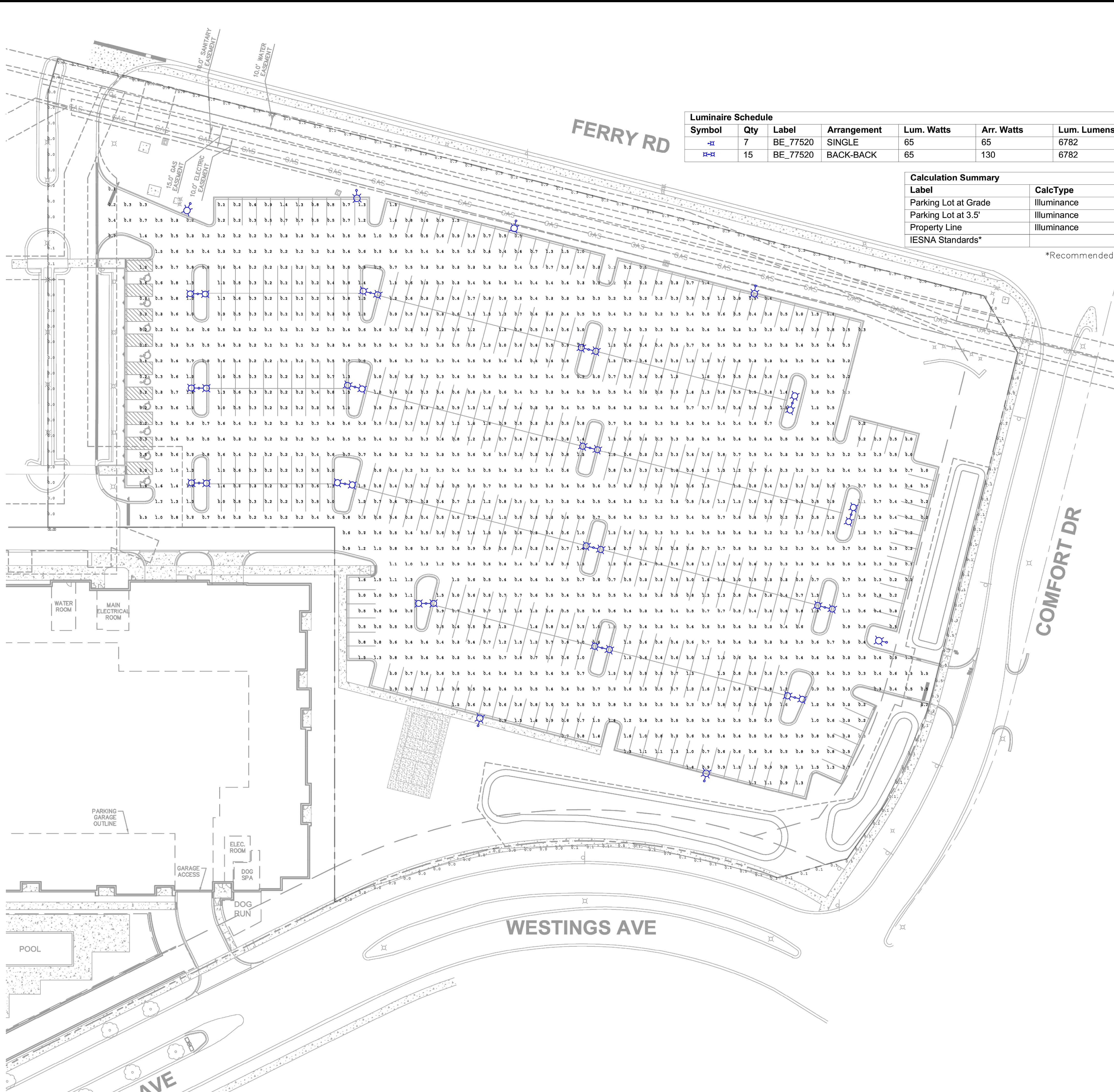


Drawing name: K:\GIS_DEV\168709000_Linear_Prog_Citygate_Centre_Naperville_ILX_Design\CAD\PlanSheets\E1.0 - PHOTOMETRICS.dwg E1.0 Apr 14, 2020 10:35am by: Taylor, Eashbach
 This document, together with the concepts and designs presented herein, is intended only for the specific purpose and client for which it was prepared. Reuse of and improper reliance on this document without written authorization and adaptation by Kimley-Horn and Associates, Inc. shall be without liability to Kimley-Horn and Associates, Inc.



Call Before You Dig
 1-800-892-0123

Luminaire Schedule										
Symbol	Qty	Label	Arrangement	Lum. Watts	Arr. Watts	Lum. Lumens	Arr. Lamp Lumens	LLF	Description	[MANUFAC]
⊕	7	BE_77520	SINGLE	65	65	6782	6780	0.800	BE_77520K4	BEGA
⊕-⊕	15	BE_77520	BACK-BACK	65	130	6782	13560	0.800	BE_77530K4	BEGA

Calculation Summary					
Label	CalcType	Units	Avg	Max	Min
Parking Lot at Grade	Illuminance	Fc	1.10	3.5	0.3
Parking Lot at 3.5'	Illuminance	Fc	1.11	4.6	0.2
Property Line	Illuminance	Fc	0.13	1.0	0.0
IESNA Standards*			0.8		0.2

*Recommended by Naperville Code of Ordinances Section 6-14-4

A PHOTOMETRIC ANALYSIS

SCALE: 1"=60'

BEGA
 Pole top luminaire
 Project - Reference number: _____ Date: _____

Product data sheet
Application
 LED pole top luminaire with asymmetrical flat beam light distribution.
 For mounting heights 5000 - 8000 mm.
Product description
 Luminaire made of aluminum alloy, aluminum and stainless steel.
 BEGA UniLine® coating technology.
 Synthetic cover with optical structure.
 Silicone gasket.
 Reflector made of pure anodized aluminum.
 Toolless closure.
 Adjustable tilt for beam direction 0° or 15°.
 For pole top 76 mm.
 Inner diameter of the pole min. 82 / max. 70 mm.
 Spig. flange depth: 100 mm.
 Connecting cable X02B0-F 5G 1" cable length 6 m.
LED power supply unit
 220-240 V AC, 50/60 Hz
 DC 170-280 V
 DALI compatible.
 A basic isolation exists between power cable and control line.
 BEGA Thermal Control®
 Temporary thermal regulation to protect temperature-sensitive components without switching off the luminaire.
 Safety class I.
 Protection class IP 66.
 Dust-tight and protection against strong water jets.
 Impact strength IK10.
 Protection against mechanical impacts < 20 joule.
 CE - Safety mark.
 CE - Conformity mark.
 Horizontal wind catching area: 0.07 m².
 Weight: 9.9 kg.
Lamp
 Module connected wattage 57.4 W
 Luminaire connected wattage 64 W
 Rated temperature L₅₀ = 30 °C
 Ambient temperature L_{max} = 30 °C
Inrush current
 Inrush current: 10 A / 200 µs
 Maximum number of luminaires of this type per miniature circuit breaker:
 B10A: 18 luminaires
 B15A: 30 luminaires
 C10A: 31 luminaires
 C15A: 51 luminaires
Article No. 77520
 LED colour temperature optionally 4000K or 3000K
 4000 K - Article number = **K4**
 3000 K - Article number = **K3**
Accessories
 For this luminaire we recommend the following BEGA luminaire poles:
 70915 Pole with anchorage H 6000 mm
 70916 Pole with anchorage H 6000 mm
 70917 Pole with anchorage H 7000 mm
 70920 Pole with anchorage H 8000 mm
 Cylindrically stepped aluminum poles, lacquered with access door and C-clamp:
 70905 Pole with anchorage H 6000 mm
 70906 Pole with anchorage H 6000 mm
 70907 Pole with baseplate H 6000 mm
 70904 Pole with baseplate H 6000 mm
Service life - Ambient temperature
 Rated temperature L₅₀ < 25 °C
 LED module: 100,000h (L80 B50)
 LED unit: 50,000h (L80 B50)
 Ambient temperature L_{max} = 30 °C (100 %)

Light distribution

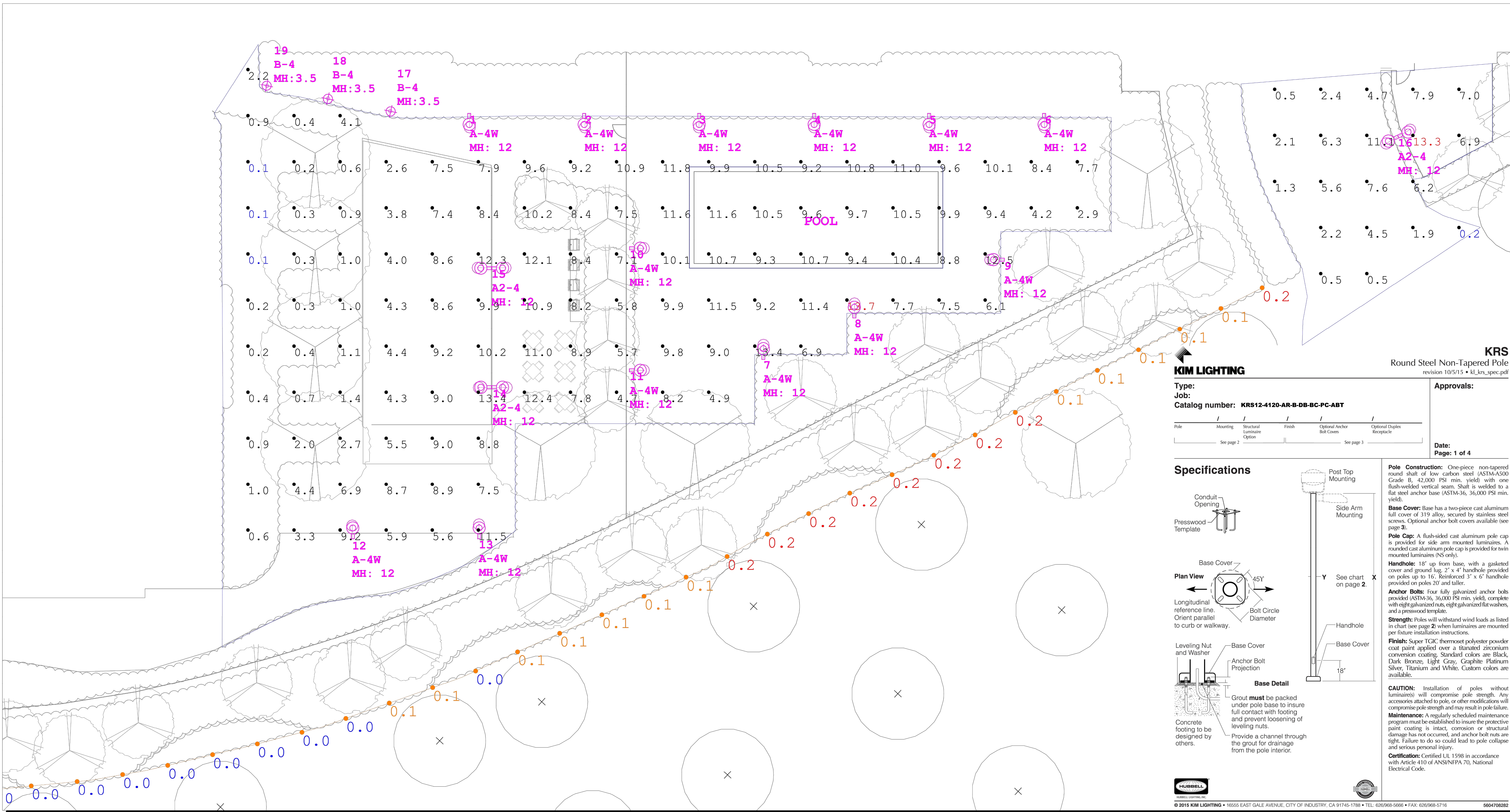
B SITE LIGHT FIXTURE

SCALE: N.T.S.

THE EXTERIOR LIGHTING DEPICTED ON THIS PLAN COMPLIES WITH THE REQUIREMENTS OF 6-14-4.3 (PERFORMANCE STANDARDS, EXTERIOR LIGHTING), PER SECTION 6-14-4.3.7. ONCE THE PLAN IS APPROVED, THE EXTERIOR LIGHTING OF THE PROPERTY SHALL CONFORM TO THE APPROVED PLAN.

PROPERTY OWNER _____
 PLAN PREPARER _____

Kimley-Horn
 © 2020 KIMLEY-HORN AND ASSOCIATES, INC.
 1001 WARRENVILLE ROAD, SUITE 350,
 Lisle, IL 60532
 WWW.KIMLEY-HORN.COM
 SCALE: AS NOTED
 DESIGNED BY: TRE
 DRAWN BY: RM
 CHECKED BY: WAW
 REVISIONS:
 NO. DATE BY
 1 04/14/20 WAW
 2 03/21/20 WAW
 3 03/06/20 WAW
PHOTOMETRIC PLAN
 CITYGATE CENTRE III
 NE CORNER OF CITY GATE LANE AND WESTINGS AVENUE
 ORIGINAL ISSUE: 01/31/20
 KHA PROJECT NO. 168709000
 SHEET NUMBER
E1.0



Scale: 1 inch = 10 Ft.

KRS
Round Steel Non-Tapered Pole
revision 10/5/15 • kl_krs_spec.pdf

KIM LIGHTING

Type:
Job:
Catalog number: **KRS12-4120-AR-B-DB-BC-PC-ABT**

Approvals:

Date:
Page: 1 of 4

Specifications

Pole Construction: One-piece non-tapered round shaft of low carbon steel (ASTM-A500 Grade B, 42,000 PSI min. yield) with one flush-welded vertical seam. Shaft is welded to a flat steel anchor base (ASTM-36, 36,000 PSI min. yield).

Base Cover: Base has a two-piece cast aluminum full cover of 319 alloy, secured by stainless steel screws. Optional anchor bolt covers available (see page 3).

Pole Cap: A flush-sided cast aluminum pole cap is provided for side arm mounted luminaires. A rounded cast aluminum pole cap is provided for twin mounted luminaires (N=only).

Handhole: 18" up from base, with a gasketed cover and ground lug, 2" x 4" handhole provided on poles up to 16'. Reinforced 3" x 6" handhole provided on poles 20' and taller.

Anchor Bolts: Four fully galvanized anchor bolts provided (ASTM-36, 36,000 PSI min. yield), complete with eight galvanized nuts, eight galvanized flat washers, and a presswood template.

Strength: Poles will withstand wind loads as listed in chart (see page 2) when luminaires are mounted per future installation instructions.

Finish: Super TGIC thermoset polyester powder coat paint applied over a titanium zirconium conversion coating. Standard colors are Black, Dark Bronze, Light Gray, Graphite Platinum Silver, Titanium and White. Custom colors are available.

CAUTION: Installation of poles without luminaires will compromise pole strength. Any accessories attached to pole, or other modifications will compromise pole strength and may result in pole failure.

Maintenance: A regularly scheduled maintenance program must be established to insure the protective paint coating is intact, corrosion or structural damage has not occurred, and anchor bolt nuts are tight. Failure to do so could lead to pole collapse and serious personal injury.

Certification: Certified UL 1598 in accordance with Article 410 of ANS/NFPA 70, National Electrical Code.

© 2015 KIM LIGHTING • 1655 EAST GALE AVENUE, CITY OF INDUSTRY, CA 91745-1786 • TEL: 626/968-5996 • FAX: 626/968-5716 58047082R2

Luminaire Schedule										
Symbol	Qty	Label	Arrangement	Lum. Watts	Arr. Watts	Lum. Lumens	Arr. Lum. Lumens	LLF	Description	Manufacturer
⊖	13	A-4W	SINGLE	65	65	7289	7289	0.800	UR20-24L-65-4K7-4w	KimLighting
⊖⊖	3	A2-4	BACK-BACK	65	130	7371	14742	0.800	UR20-24L-65-4K7-4	KimLighting
⊙	3	B-4	SINGLE	21.67	21.67	1482	1482	0.800	PA7R-NU4-12L-020-4K7	KIM LIGHTING

Calculation Summary										
Label	CalcType	Units	Avg	Max	Min	Avg/Min	Max/Min	Readings Taken @		
POOL AREA ENTRANCE_Planar	Illuminance	Fc	4.64	13.3	0.2	23.20	66.50	READINGS TAKEN @ 3.5' ABOVE GRADE		
POOL AREA LTG_Planar	Illuminance	Fc	6.66	13.7	0.1	66.60	137.00	READINGS TAKEN @ 3.5' ABOVE GRADE		
PROPERTY LINE	Illuminance	Fc	0.09	0.2	0.0	N.A.	N.A.	READINGS TAKEN @ 3.5' ABOVE GRADE		
POOL	Illuminance	Fc	10.25	11.8	8.8	1.16	1.34	POOL SURFACE		

THE EXTERIOR LIGHTING DEPICTED ON THIS PLAN COMPLIES WITH THE REQUIREMENTS OF 6-14-4.3 (PERFORMANCE STANDARDS, EXTERIOR LIGHTING), PER SECTION 6-14-4.3.7. ONCE THE PLAN IS APPROVED, THE EXTERIOR LIGHTING OF THE PROPERTY SHALL CONFORM TO THE APPROVED PLAN.

PROPERTY OWNER _____
PLAN PREPARER _____

Luminaire Location Summary						
LumNo	Label	X	Y	Z	Orient	Tilt
1	A-4W	333	147	12	270	0
2	A-4W	358	147	12	270	0
3	A-4W	382.75	147	12	270	0
4	A-4W	407.75	147	12	270	0
5	A-4W	432.75	147	12	270	0
6	A-4W	457.75	147	12	270	0
7	A-4W	396.75	93.75	12	90	0
8	A-4W	416.5	102.75	12	90	0
9	A-4W	449	115.25	12	180	0
10	A-4W	367.75	117.75	12	0	0
11	A-4W	367.75	91.25	12	0	0
12	A-4W	307.5	54.5	12	90	0
13	A-4W	335	54.75	12	90	0
14	A2-4	338	87.5	12	0	0
15	A2-4	337.75	113.5	12	0	0
16	A2-4	534.5	142	12	30	0
17	B-4	315.75	147.5	5	258	0
18	B-4	302.25	150.25	5	258	0
19	B-4	289	153	5	250	0

enlighten PG

Project Name: **Calamos Lighting Plan**
Client Name: **Renee TeVogt - DANIEL WEINBACH & PARTNERS, LTD**

Drawn By: Jose Saucedo
Date: 3/4/2020
Scale: 1" = 10'

Revisions

Page 1 of 1