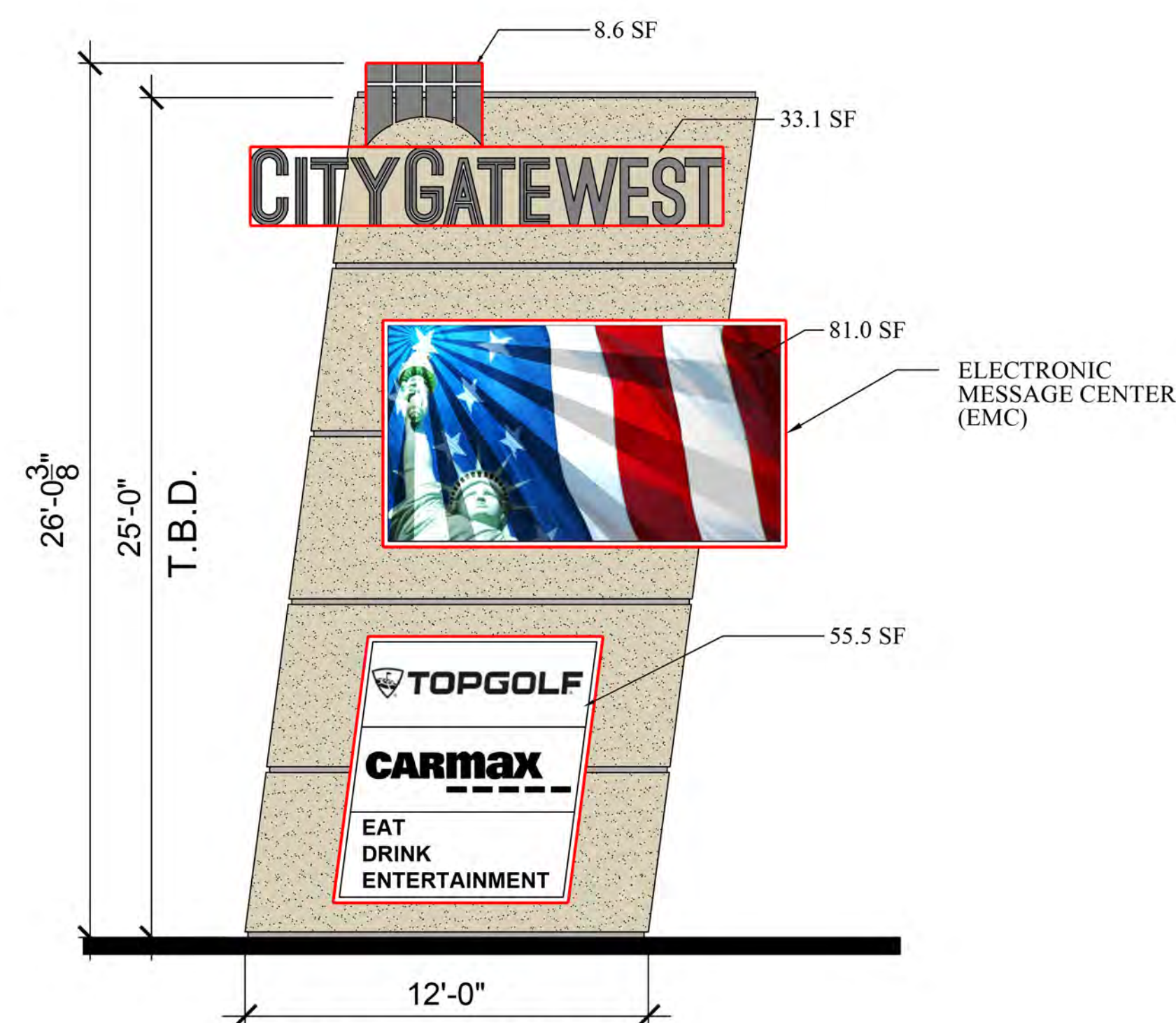
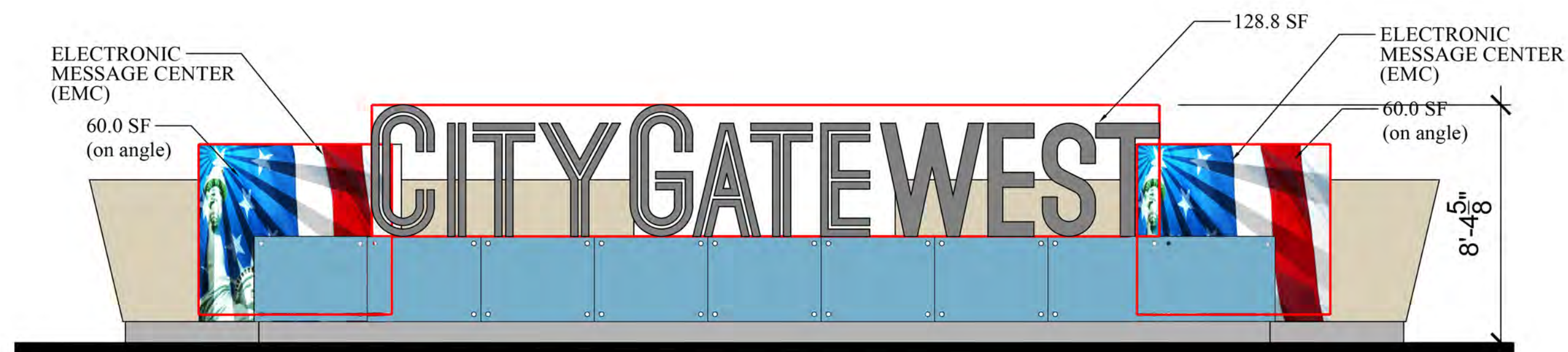


1 CITYGATE WEST TOLLWAY SIGN (WEST SIDE)
SCALE: 1/4" = 1'-0"



2 CITYGATE WEST DEVELOPMENT SIGN (WEST)
SCALE: 1/4" = 1'-0"



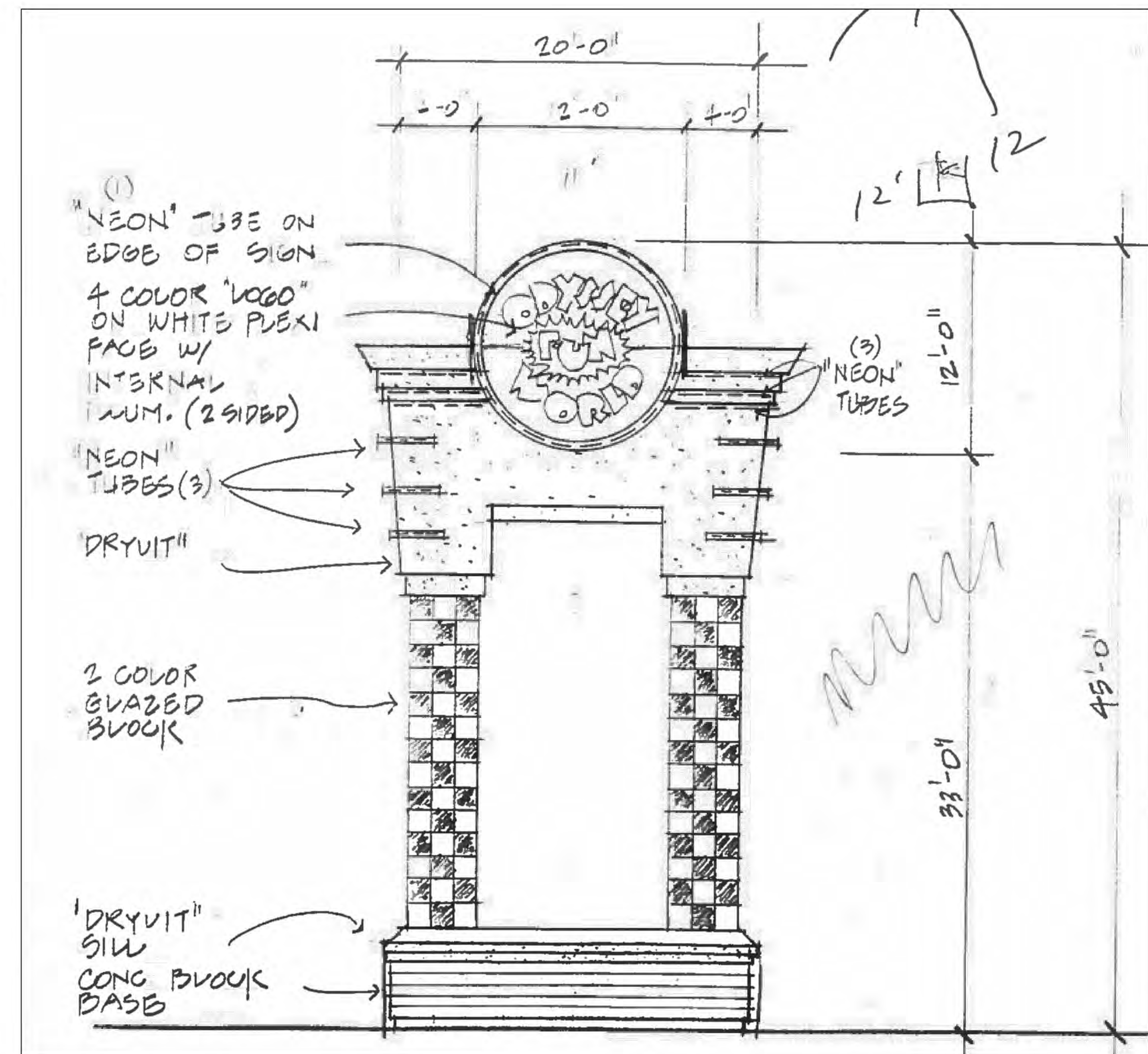
3 CITYGATE WEST MONUMENT SIGN (RTE. 59 & FERRY ROAD - WEST SIDE)
SCALE: 1/4" = 1'-0"

SIGN AREA

(1) TOLLWAY SIGN	11.7 SF
	45.0 SF
	180.0 SF
TOTAL	236.7 SF

(2) DEVELOPMENT SIGN	8.6 SF
	33.1 SF
	81.0 SF
	55.5 SF
TOTAL	178.2 SF

(3) MONUMENT SIGN	128.8 SF
	60.0 SF
	60.0 SF
TOTAL	248.8 SF

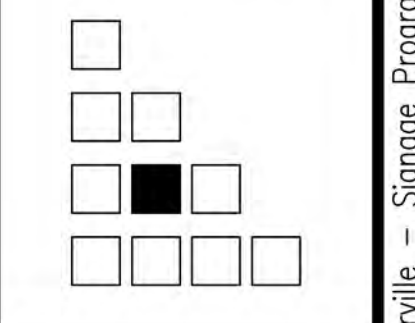


4 EXISTING FUN WORLD SIGN
SCALE: NTS

REVISIONS:	
NO.	DATE

CITYGATE NAPERVILLE
S.W. CORNER OF U.S. RTE. 59 & FERRY ROAD
NAPERVILLE, ILLINOIS

TECH METRA LTD
ARCHITECTURE □ ENGINEERING □ CONSTRUCTION MANAGEMENT □ INTERIOR DESIGN
2221 CAMDEN COURT □ OAK BROOK, IL 60523 □ (630) 560-8100 □ FAX (630) 560-8101



JOB:
DATE: 1-14-2021
SCALE: AS NOTED
SHEET:

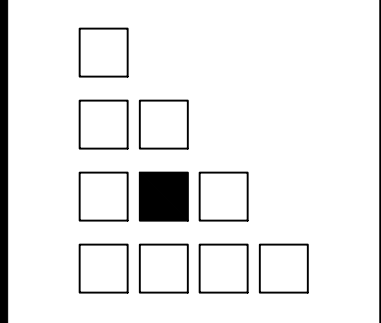
DEVELOPMENT IDENTITY / SIGNAGE PROGRAM

REVISIONS:

NO. DATE:

CITYGATE NAPERVILLE
S.W. CORNER OF U.S. RTE. 59 & FERRY ROAD
NAPERVILLE, ILLINOIS

TECH METRA LTD
ARCHITECTURE ENGINEERING CONSTRUCTION MANAGEMENT INTERIOR DESIGN
2221 CAMDEN COURT OAK BROOK, IL 60523 (630)560-8100 FAX (630)560-8101



JOB:
DATE: 1-14-2021
SCALE: AS NOTED
SHEET:

A-3

Filename: G:\Odyssey West\CityGate Naperville - Signage Program\CityGate-Signage-Bridge-Elevations.dwg May 30, 2017 - 11:10:09 - 001 -



LED panel area = 800 sf

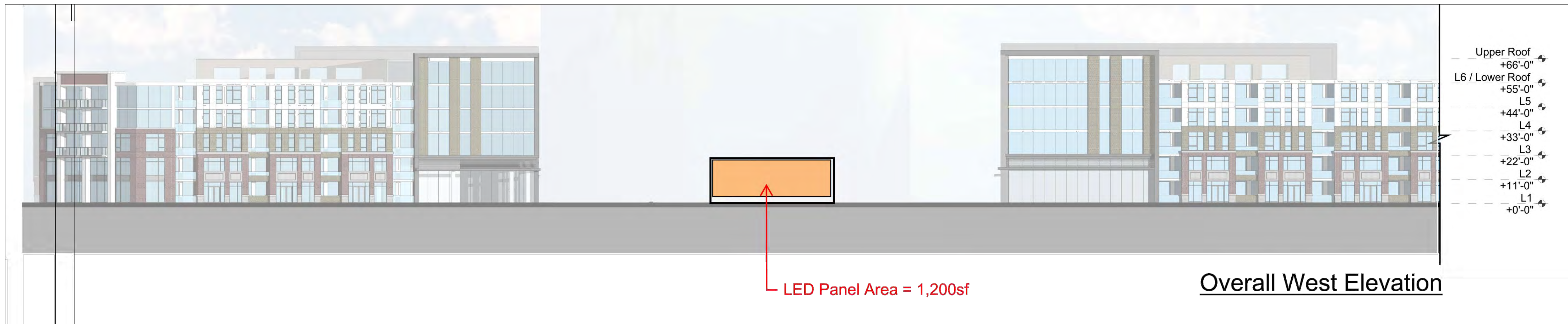
South Residential Building - North Elevation



LED panel area = 800 sf

North Residential Building - South Elevation

DEVELOPMENT IDENTITY / SIGNAGE PROGRAM

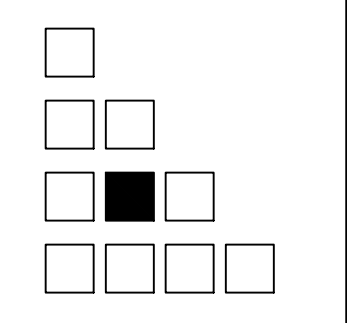


DEVELOPMENT IDENTITY / SIGNAGE PROGRAM

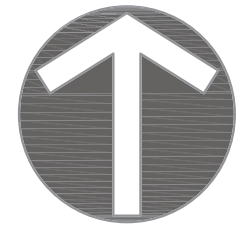
NO.	DATE:	REVISIONS:

CITYGATE NAPERVILLE
 S.W. CORNER OF U.S. RTE. 59 & FERRY ROAD
 NAPERVILLE, ILLINOIS

TECH METRA LTD
 ARCHITECTURE ENGINEERING CONSTRUCTION MANAGEMENT INTERIOR DESIGN
 2221 CAMDEN COURT OAK BROOK, IL 60523 (630)560-8100 FAX (630)560-8101



JOB: _____
 DATE: 1-14-2021
 SCALE: AS NOTED
 SHEET:
A-4



NORTH

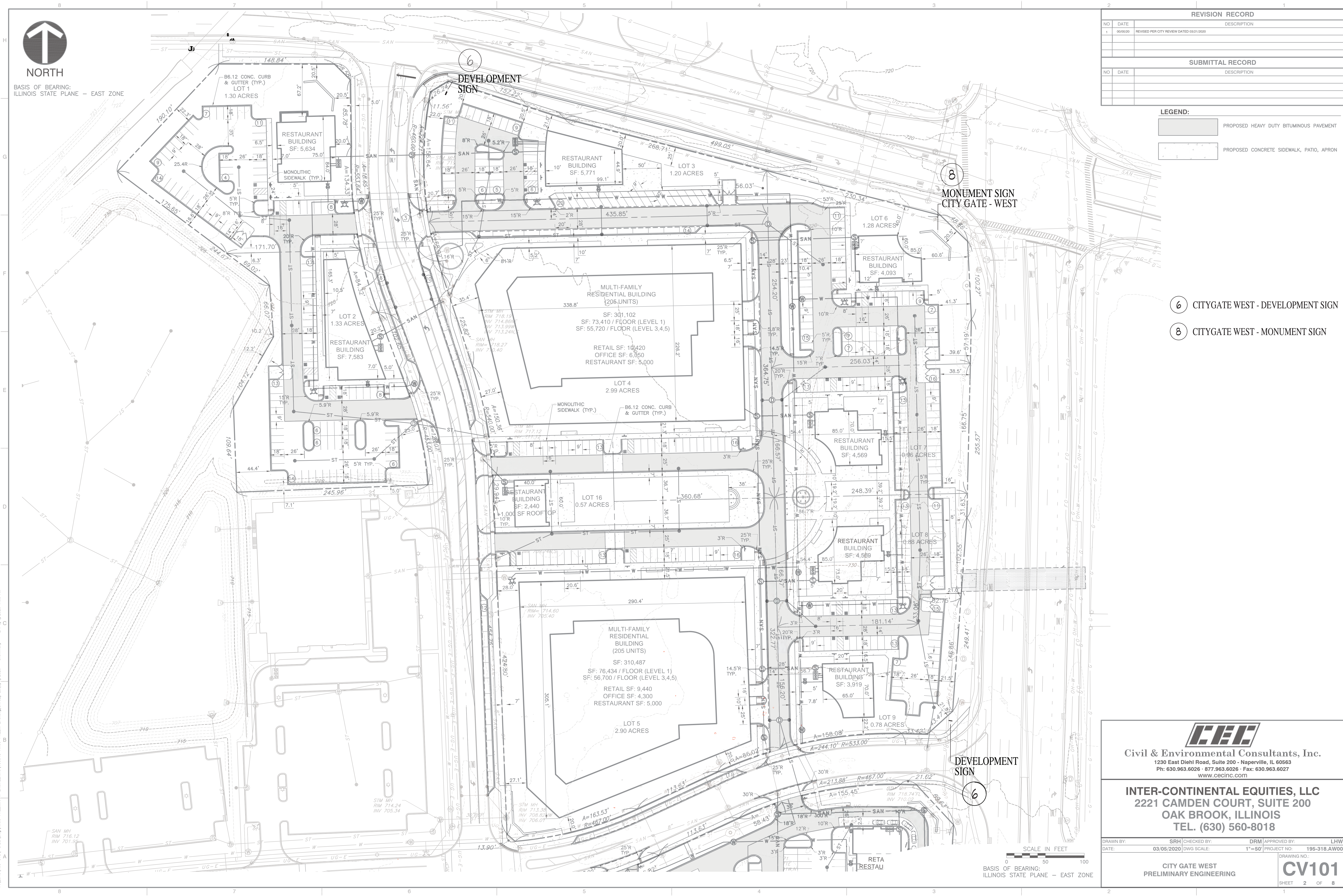
BASIS OF BEARING:
ILLINOIS STATE PLANE - EAST ZONE

REVISION RECORD		
NO	DATE	DESCRIPTION
1	00/00/00	REVISED PER CITY REVIEW DATED 03/21/2020

SUBMITTAL RECORD		
NO	DATE	DESCRIPTION

LEGEND:

	PROPOSED HEAVY DUTY BITUMINOUS PAVEMENT
	PROPOSED CONCRETE SIDEWALK, PATIO, APRON



- ⑥ CITYGATE WEST - DEVELOPMENT SIGN
- ⑧ CITYGATE WEST - MONUMENT SIGN

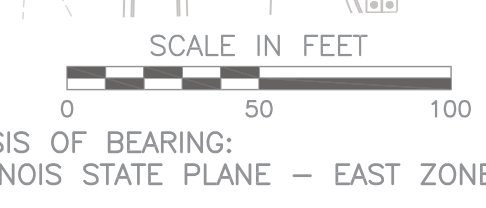
CEC
Civil & Environmental Consultants, Inc.
 1230 East Diehl Road, Suite 200 - Naperville, IL 60563
 Ph: 630.963.6026 · 877.963.6026 · Fax: 630.963.6027
 www.cecinc.com

INTER-CONTINENTAL EQUITIES, LLC
 2221 CAMDEN COURT, SUITE 200
 OAK BROOK, ILLINOIS
 TEL. (630) 560-8018

DRAWN BY:	SRH	CHECKED BY:	DRM	APPROVED BY:	LHW
DATE:	03/05/2020	DWG SCALE:	1"=50'	PROJECT NO:	195-318.AW00

CITY GATE WEST
 PRELIMINARY ENGINEERING

CV101
 SHEET 2 OF 8



A:\2019\195-318-CDD\DWG\MPD-PREL\MPD-ENGINEERING\195318-MPD-PREL\ENG\DWG\195318-1\2020 - aw00.dwg - LP: 5/6/2020 7:03 AM

- 3 CITYGATE WEST - TOLLWAY SIGN
- 6 CITYGATE WEST - DEVELOPMENT SIGN



ENLARGED SITE PLAN
SCALE: N.T.S.

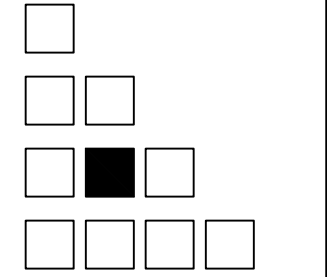
DEVELOPMENT IDENTITY / SIGNAGE PROGRAM

REVISIONS:

NO. DATE:

CITYGATE NAPERVILLE
S.W. CORNER OF U.S. RTE. 59 & FERRY ROAD
NAPERVILLE, ILLINOIS

TECH METRA LTD
ARCHITECTURE ENGINEERING CONSTRUCTION MANAGEMENT INTERIOR DESIGN
2221 CAMDEN COURT OAK BROOK, IL 60523 (630)560-8100 FAX (630)560-8101



JOB:
DATE: 10-02-17
SCALE: N.T.S.
SHEET:
SP-2