

Preliminary Landscape Plan

Polo Club

Naperville, Illinois

November 22, 2019

CONSULTANTS:



LANDSCAPE ARCHITECT:
 GARY R. WEBER ASSOCIATES, INC
 402 WEST LIBERTY DRIVE
 WHEATON, ILLINOIS 60187



CIVIL ENGINEER:
 CEMCON, LTD.
 2280 WHITE OAK CIRCLE, SUITE 100
 AURORA, ILLINOIS 60502



LOCATION MAP
 SCALE: 1"=600'

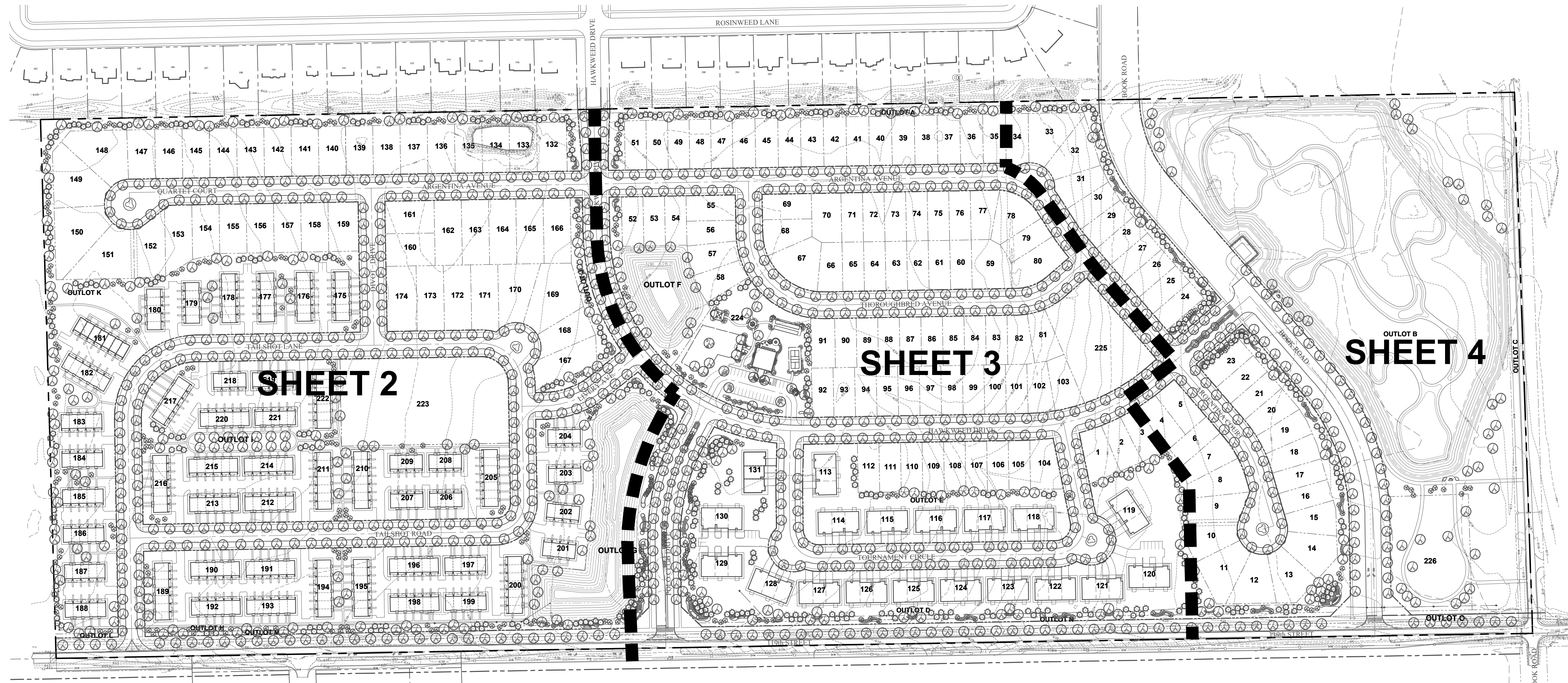
INDEX OF SHEETS

<u>SHEET NO.</u>	<u>DESCRIPTION</u>
0	COVER SHEET
1	OVERALL LANDSCAPE PLAN
2	PRELIMINARY LANDSCAPE PLAN
3	PRELIMINARY LANDSCAPE PLAN
4	PRELIMINARY LANDSCAPE PLAN
5	LANDSCAPE DETAILS
6	LANDSCAPE DETAILS
7	TYPICAL FOUNDATION LANDSCAPE PLANS
8	TREE PRESERVATION PLAN



GENERAL NOTES

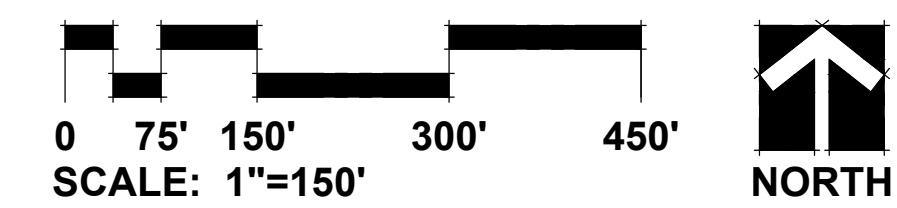
- TREES SHALL BE INSTALLED A MINIMUM OF FIVE (5) FEET HORIZONTALLY FROM UNDERGROUND ELECTRICAL FEEDERS, SANITARY SEWERS, SANITARY SERVICES, WATER MAINS, AND WATER SERVICES. TREES SHALL BE INSTALLED A MINIMUM OF TEN (10) FEET HORIZONTALLY FROM UTILITY STRUCTURES AND APPURTENANCES, INCLUDING, BUT NOT LIMITED TO, MANHOLES, VALVE VAULTS, VALVE BOXES AND FIRE HYDRANTS. NO TREES, SHRUBS OR OBSTACLES WILL BE ALLOWED 10' IN FRONT OF, 5' ON THE SIDES, AND 7' TO THE REAR OF THE ELECTRICAL TRANSFORMER.
- LOCATION OF TREES MAY REQUIRE ADJUSTMENT BASED ON FINAL ENGINEERING PLANS.
- CONTRACTOR SHALL VERIFY UNDERGROUND UTILITY LINES AND IS RESPONSIBLE FOR ANY DAMAGE.
- CONTRACTOR SHALL VERIFY ALL EXISTING CONDITIONS IN THE FIELD PRIOR TO CONSTRUCTION AND SHALL NOTIFY LANDSCAPE ARCHITECT OF ANY VARIANCE.
- MATERIAL QUANTITIES SHOWN ARE FOR CONTRACTOR'S CONVENIENCE ONLY. THE CONTRACTOR MUST VERIFY ALL MATERIAL AND SUPPLY SUFFICIENT MATERIALS TO COMPLETE THE JOB PER PLAN.
- THE LANDSCAPE ARCHITECT RESERVES THE RIGHT TO INSPECT TREES AND SHRUBS EITHER AT PLACE OF GROWTH OR AT SITE BEFORE PLANTING, FOR COMPLIANCE WITH REQUIREMENTS OF VARIETY, SIZE AND QUALITY.
- WORK SHALL CONFORM TO AMERICAN STANDARD FOR NURSERY STOCK, STATE OF ILLINOIS HORTICULTURAL STANDARDS, AND LOCAL MUNICIPAL REQUIREMENTS.
- CONTRACTOR SHALL SECURE AND PAY FOR ALL PERMITS, FEES, AND INSPECTIONS NECESSARY FOR THE PROPER EXECUTION OF THIS WORK AND COMPLY WITH ALL CODES APPLICABLE TO THIS WORK.
- SEE GENERAL CONDITIONS AND SPECIFICATIONS FOR LANDSCAPE WORK FOR ADDITIONAL REQUIREMENTS.



REPRESENTATIVE PLANT LIST

Key	Botanical/Common Name	Size	Remarks	Key	Botanical/Common Name	Size	Remarks	Key	Botanical/Common Name	Size	Remarks
SHADE TREES											
	Acer x freemanii 'Jeffers Red'	2 1/2" Cal.			Ulmus carpinifolia 'New Horizon'	2 1/2" Cal.			Cornus alba 'Bailhala'	30" Tall	3' O.C.
	AUTUMN BLAZE MAPLE				NEW HORIZON SMOOTHLEAF ELM				IVORY HALO DOGWOOD		
	Acer miyabei 'Morton'	2 1/2" Cal.			Ulmus 'Morton'	2 1/2" Cal.			Cornus sanguinea 'Cata'	24" Tall	3' O.C.
	STATE STREET MAPLE				ACCOLADE ELM				ARCTIC SUN DOGWOOD		
	Acer saccharum 'Green Mountain'	2 1/2" Cal.			Ulmus 'Morton Glossy'	2 1/2" Cal.			Itea virginica 'Sprich'	24" Tall	3' O.C.
	GREEN MOUNTAIN SUGAR MAPLE				TRIUMPH ELM				LITTLE HENRY VIRGINIA SWEETSPIRE		
	Acer rubrum	2 1/2" Cal.			ORNAMENTAL TREES						
	RED MAPLE				Amelanchier grandiflora	6' Tall	Multi-Stem		Rosa 'Radcon'	24" Tall	3' O.C.
	Celtis occidentalis	2 1/2" Cal.			APPLE SERVICEBERRY				PINK KNOCKOUT ROSE		
	COMMON HACKBERRY				Amelanchier laevis	6' Tall	Multi-Stem		Syringa meyeri 'Palibin'	24" Tall	4' O.C.
	Celtis occidentalis 'Chicagoland'	2 1/2" Cal.			ALLEGHANY SERVICEBERRY				DWARF KOREAN LILAC		
	CHICAGOLAND COMMON HACKBERRY				Betula nigra	6' Tall	Multi-Stem		Viburnum dentatum	36" Tall	5' O.C.
	Gleditsia triacanthos var. inermis 'Skycole'	2 1/2" Cal.			RIVER BIRCH				ARROWWOOD VIBURNUM		
	SKYLINE HONEYLOCUST				Cornus caroliniana	6' Tall	Multi-stem		Viburnum trilobum 'Hah's'	36" Tall	4' O.C.
	Gleditsia triacanthos var. inermis 'Shademaster'	2 1/2" Cal.			AMERICAN HORNBEAM				EVERGREEN SHRUBS		
	SHADEMASTER HONEYLOCUST				Cercis canadensis	6' Tall	Multi-Stem		Juniperus chinensis v. sargentii 'Viridis'	24" Wide	5' O.C.
	Ginkgo biloba	2 1/2" Cal.	Male only		EASTERN REDBUD				GREEN SARGENT JUNIPER		
	MAIDENHAIR TREE				Cornus mas 'Golden Glory'	6' Tall	Multi-Stem		Juniperus chinensis 'Seagreen'	30" Wide	4' O.C.
	Gymnocladus dioica 'Espresso-JFS'	2 1/2" Cal.			GOLDEN GLORY CORNELIAN CHERRY				PERENNIALS AND ORNAMENTAL GRASSES		
	ESPRESSO KENTUCKY COFFEE TREE				Crataegus crus-galli inermis	6' Tall	Multi-Stem		Allium 'Summer Beauty'	#1	18" O.C.
	Liriodendron tulipifera	2 1/2" Cal.			THORNLESS COCKSPUR HAWTHORN				SUMMER BEAUTY ONION		
	TULIPTREE				Malus 'Prairifire'	6' Tall	Multi-Stem		Calamagrostis x acutiflora 'Karl Foerster'	#2	24" O.C.
	Platanus x acerifolia 'Bloodgood'	2 1/2" Cal.			PRAIRIFIRE CRABAPPLE				FEATHER REED GRASS		
	BLOODGOOD LONDON PLANETREE				Malus 'Snowdrift'	6' Tall	Multi-Stem		Hemerocallis 'Happy Returns'	#1	18" O.C.
	Platanus x acerifolia 'Exclamation'	2 1/2" Cal.			SNOWDRIFT CRABAPPLE				HAPPY RETURNS DAYLILY		
	EXCLAMATION! LONDON PLANETREE				Syringa reticulata 'Ivory Silk'	6' Tall	Multi-Stem		Hemerocallis 'Rosy Returns'	#1	24" O.C.
	Quercus alba	2 1/2" Cal.			IVORY SILK JAPANESE TREE LILAC				ROSY RETURNS DAYLILY		
	WHITE OAK				EVERGREEN TREES						
	Quercus imbricaria	2 1/2" Cal.			Abies concolor	6' Tall			Panicum virgatum 'Northwind'	#2	24" O.C.
	SHINGLE OAK				WHITE FIR				NORTHWIND SWITCH GRASS		
	Quercus rubra	2 1/2" Cal.			Picea glauca 'Densata'	6' Tall			Pennisetum alopecuroides 'HomeIn'	#2	24" O.C.
	RED OAK				BLACK HILLS SPRUCE				DWARF FOUNTAIN GRASS		
	Quercus macrocarpa	2 1/2" Cal.			Picea pungens	6' Tall			Phlox 'Forever Pink'	#1	18" O.C.
	BUR OAK				GREEN COLORADO SPRUCE				FOREVER PINK PHLOX		
	Quercus muhlenbergii	2 1/2" Cal.			Picea omorika	6' Tall			Perovskia atriplicifolia 'Little Spire'	#1	18" O.C.
	CHINKAPIN OAK				SERBIAN SPRUCE				LITTLE SPIRE RUSSIAN SAGE		
	Tilia americana 'Redmond'	2 1/2" Cal.			Pinus strobus	6' Tall			Rudbeckia fulgida 'Goldsturm'	#1	18" O.C.
	REDMOND LINDEN				WHITE PINE				BLACK-EYED SUSAN		
	Tilia cordata 'Greenspire'	2 1/2" Cal.			Pinus sylvestris	6' Tall			PRAIRIE DROPSEED	#1	18" O.C.
	GREENSPIRE LINDEN				SCOTCH PINE						
	Tilia tomentosa 'Sterling'	2 1/2" Cal.									
	STERLING SILVER LINDEN										

OVERALL LANDSCAPE PLAN



NOTE: LANDSCAPING & PARKWAY TREES TO BE ADJUSTED AROUND UTILITIES ON FINAL LANDSCAPE PLANS.

GRWA
GARY R. WEBER ASSOCIATES, INC.
 LAND PLANNING
 ECOLOGICAL CONSULTING
 LANDSCAPE ARCHITECTURE
 402 WEST LIBERTY DRIVE
 WHEATON, ILLINOIS 60187
 PHONE: 630-668-7197

CLIENTS
D.R. HORTON
America's Builder
 750 E. BUNKER COURT, SUITE 500
 VERNON HILLS, IL 60061

ENGINEER
CEMCON, LTD.
 2280 WHITE OAK CIR. SUITE 100
 AURORA, ILLINOIS 60502

POLO CLUB
 NAPERVILLE, ILLINOIS
OVERALL LANDSCAPE PLAN

NO.	DATE	REVISIONS
13	11.22.19	
12	10.25.19	
11	02.15.19	
10	01.28.19	
9	01.04.19	
8	12.07.18	
7	10.18.18	
6	10.02.18	
5	9.28.18	
4	7.30.18	
3	7.06.18	
2	6.04.18	
1	5.15.18	

DATE	3.26.18
PROJECT NO.	DR1705
DRAWN	MGM
CHECKED	JCT
SHEET NO.	

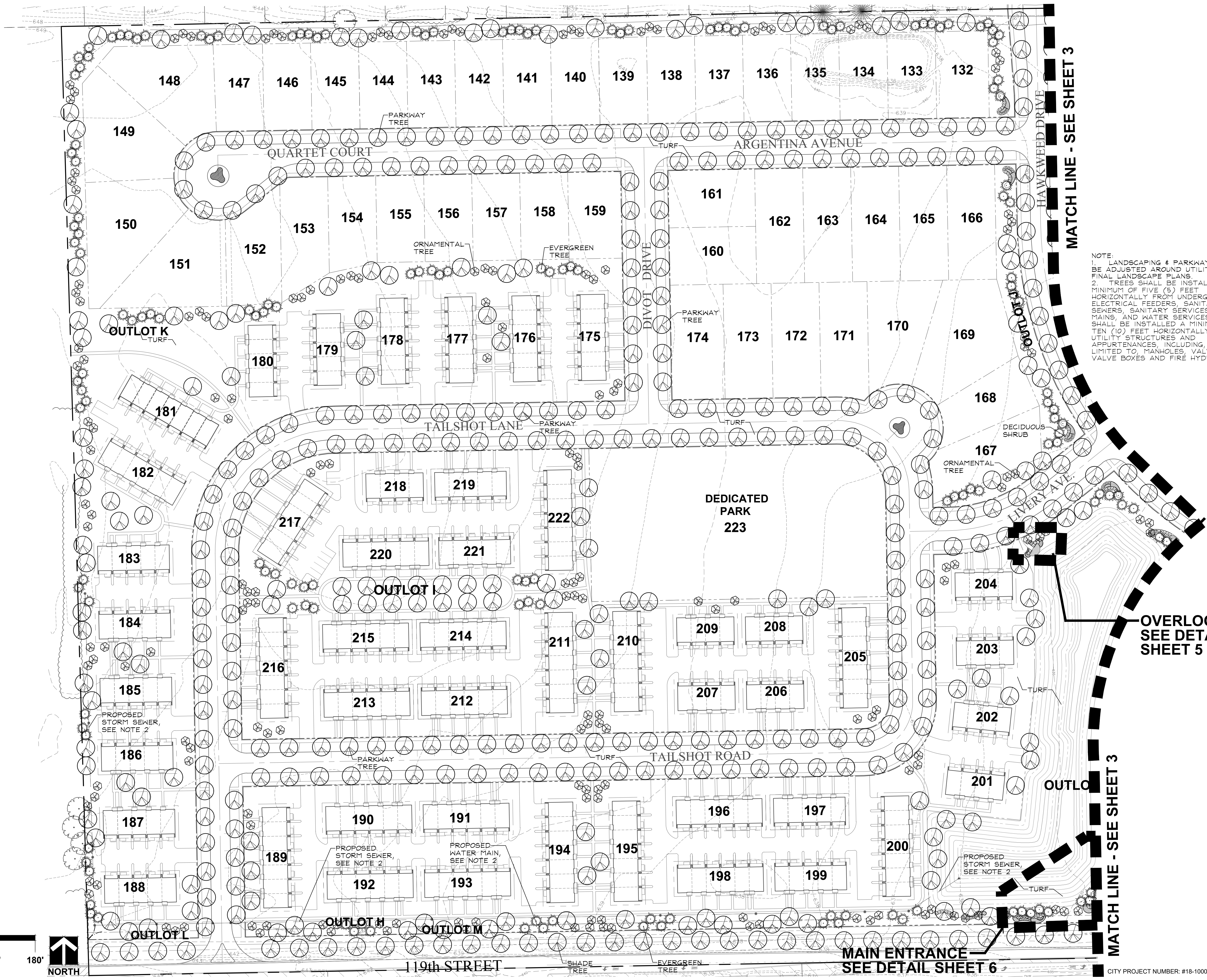


GARY R. WEBER
ASSOCIATES, INC.
LAND PLANNING
ECOLOGICAL CONSULTING
LANDSCAPE ARCHITECTURE
402 WEST LIBERTY DRIVE
WHEATON, ILLINOIS 60187
PHONE: 630-668-7197

CLIENTS
D.R. HORTON
America's Builder
750 E. BUNKER COURT, SUITE 500
VERNON HILLS, IL 60061

ENGINEER
CEMCON, LTD.
2280 WHITE OAK CIR, SUITE 100
AURORA, ILLINOIS 60502

POLO CLUB
NAPERVILLE, ILLINOIS
PRELIMINARY LANDSCAPE PLAN

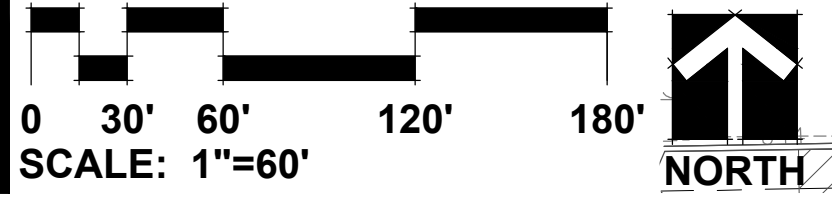


NOTE:
1. LANDSCAPING & PARKWAY TREES TO BE ADJUSTED AROUND UTILITIES ON FINAL LANDSCAPE PLANS.
2. TREES SHALL BE INSTALLED A MINIMUM OF FIVE (5) FEET HORIZONTALLY FROM UNDERGROUND ELECTRICAL FEEDERS, SANITARY SEWERS, SANITARY SERVICES, WATER MAINS, AND WATER SERVICES. TREES SHALL BE INSTALLED A MINIMUM OF TEN (10) FEET HORIZONTALLY FROM UTILITY STRUCTURES AND APPURTENANCES INCLUDING, BUT NOT LIMITED TO, MANHOLES, VALVE VAULTS, VALVE BOXES AND FIRE HYDRANTS.

OVERLOOK 1 -
SEE DETAIL SHEET 5

MATCH LINE - SEE SHEET 3

MAIN ENTRANCE
SEE DETAIL SHEET 6



REVISIONS	DATE
13	11.22.19
12	10.25.19
11	02.15.19
10	01.28.19
9	01.04.19
8	12.07.18
7	10.18.18
6	10.02.18
5	9.28.18
4	7.30.18
3	7.06.18
2	6.04.18
1	5.15.18

DATE	3.26.18
PROJECT NO.	DR1705
DRAWN	MGH
CHECKED	JCT
SHEET NO.	

2 OF 8

CITY PROJECT NUMBER: #18-1000022



GARY R. WEBER
ASSOCIATES, INC.
LAND PLANNING
ECOLOGICAL CONSULTING
LANDSCAPE ARCHITECTURE
402 WEST LIBERTY DRIVE
WHEATON, ILLINOIS 60187
PHONE: 630-668-7197

CLIENTS
D.R. HORTON
America's Builder
750 E. BUNKER COURT, SUITE 100
VERNON HILLS, IL 60061

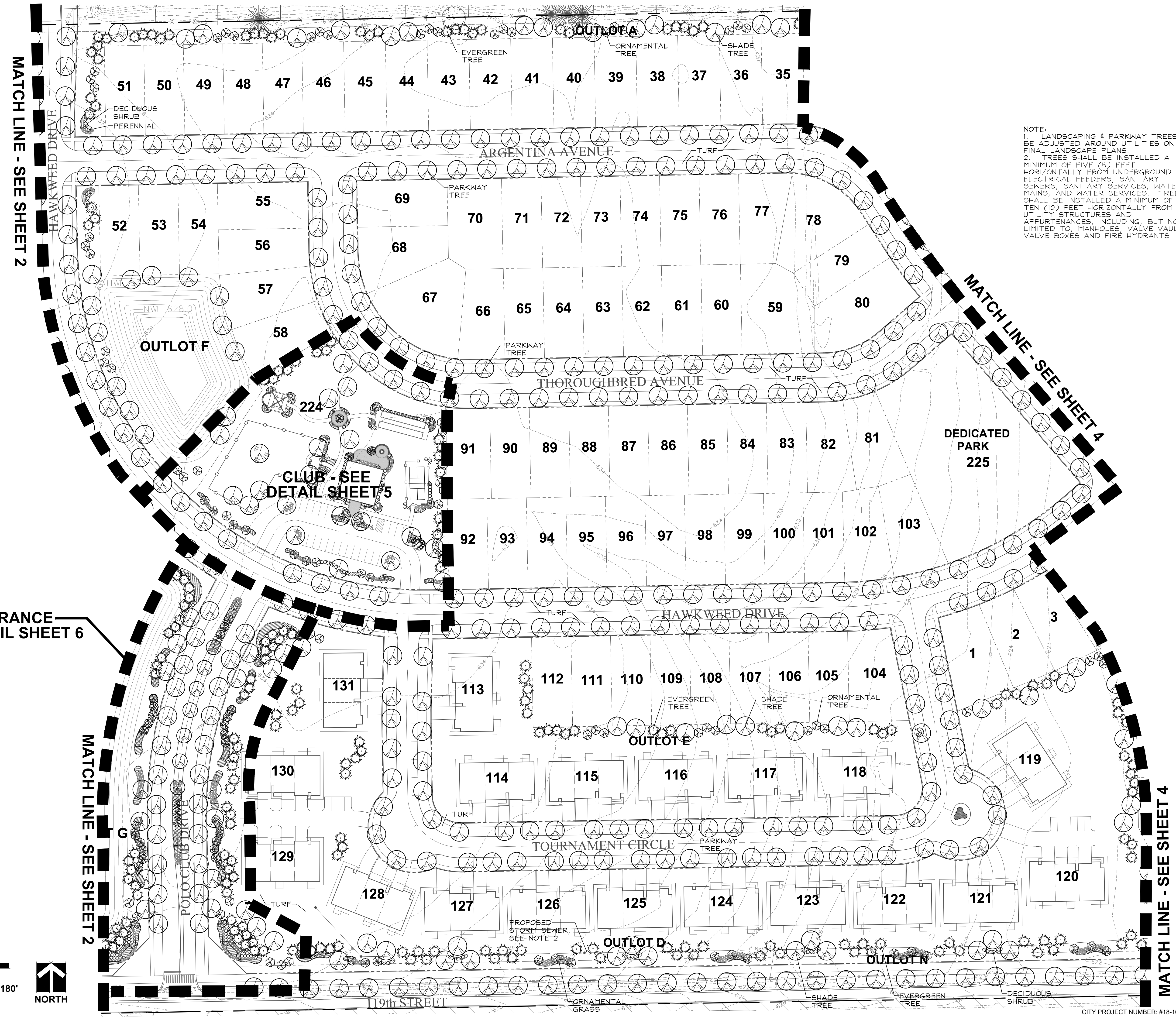
ENGINEER
CEMCON, LTD.
2280 WHITE OAK CIR, SUITE 100
AURORA, ILLINOIS 60502

POLO CLUB
NAPERVILLE, ILLINOIS
PRELIMINARY LANDSCAPE PLAN

REVISIONS	DATE
13	11.22.19
12	10.25.19
11	02.15.19
10	01.28.19
9	01.04.19
8	12.07.18
7	10.18.18
6	10.02.18
5	9.28.18
4	7.30.18
3	7.06.18
2	6.04.18
1	5.15.18

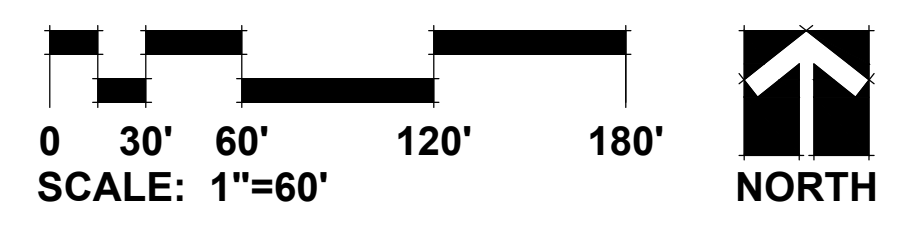
DATE	3.26.18
PROJECT NO.	DR1705
DRAWN	MGM
CHECKED	JCT
SHEET NO.	

3 OF 8



NOTE:
1. LANDSCAPING & PARKWAY TREES TO BE ADJUSTED AROUND UTILITIES ON FINAL LANDSCAPE PLANS.
2. TREES SHALL BE INSTALLED A MINIMUM OF FIVE (5) FEET HORIZONTALLY FROM UNDERGROUND ELECTRICAL FEEDERS, SANITARY SEWERS, SANITARY SERVICES, WATER MAINS AND WATER SERVICES. TREES SHALL BE INSTALLED A MINIMUM OF TEN (10) FEET HORIZONTALLY FROM UTILITY STRUCTURES AND APPURTENANCES, INCLUDING, BUT NOT LIMITED TO, MANHOLES, VALVE VAULTS, VALVE BOXES AND FIRE HYDRANTS.

MAIN ENTRANCE
SEE DETAIL SHEET 6



CITY PROJECT NUMBER: #18-1000022



GARY R. WEBER
ASSOCIATES, INC.
LAND PLANNING
ECOLOGICAL CONSULTING
LANDSCAPE ARCHITECTURE
402 WEST LIBERTY DRIVE
WHEATON, ILLINOIS 60187
PHONE: 630-668-7197

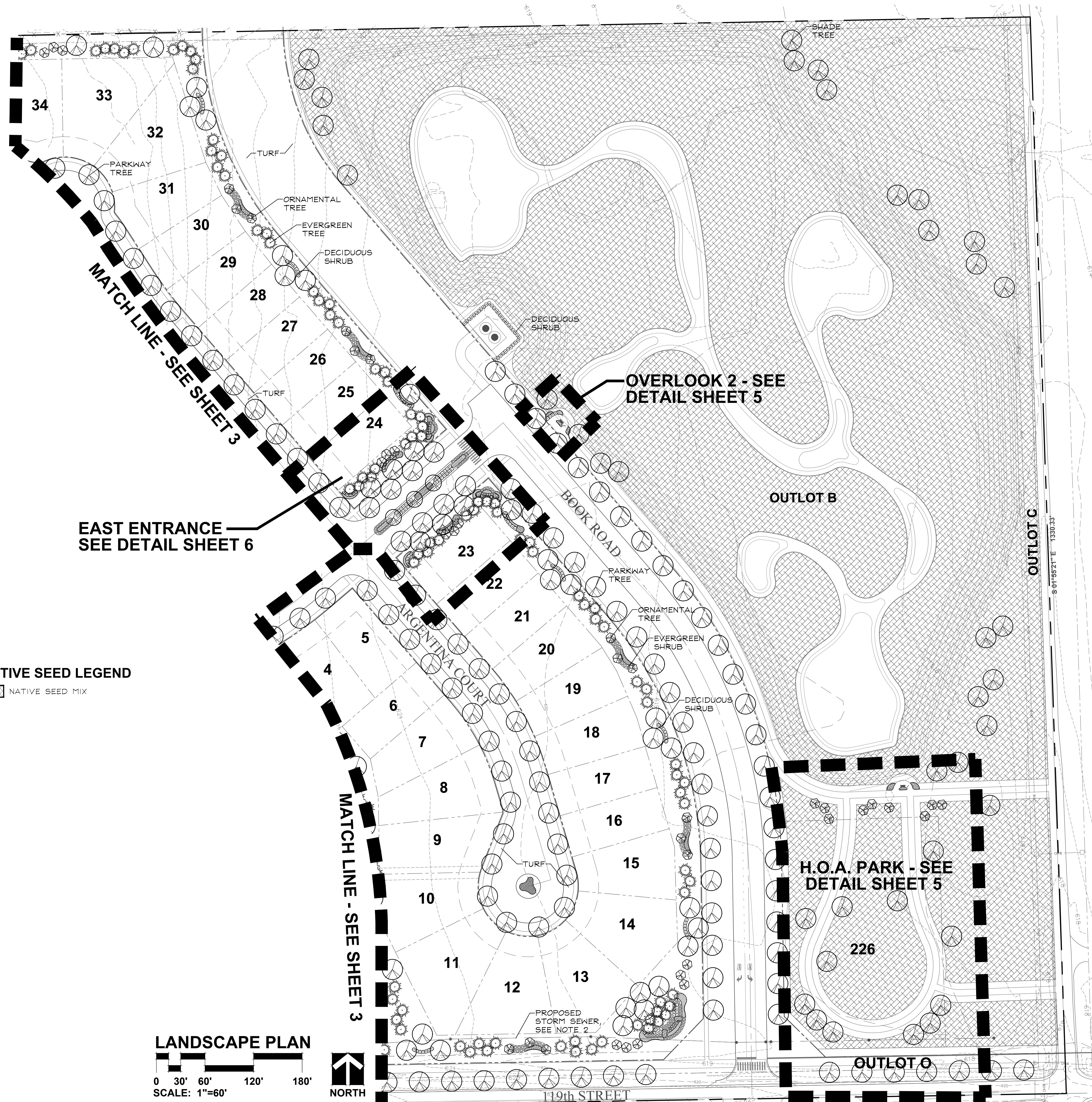
CLIENTS
D-R-HORTON
America's Builder
750 E. BUNKER COURT, SUITE 500
VERNON HILLS, IL 60061

ENGINEER
CEMCON, LTD.
2280 WHITE OAK CIR, SUITE 100
AURORA, ILLINOIS 60502

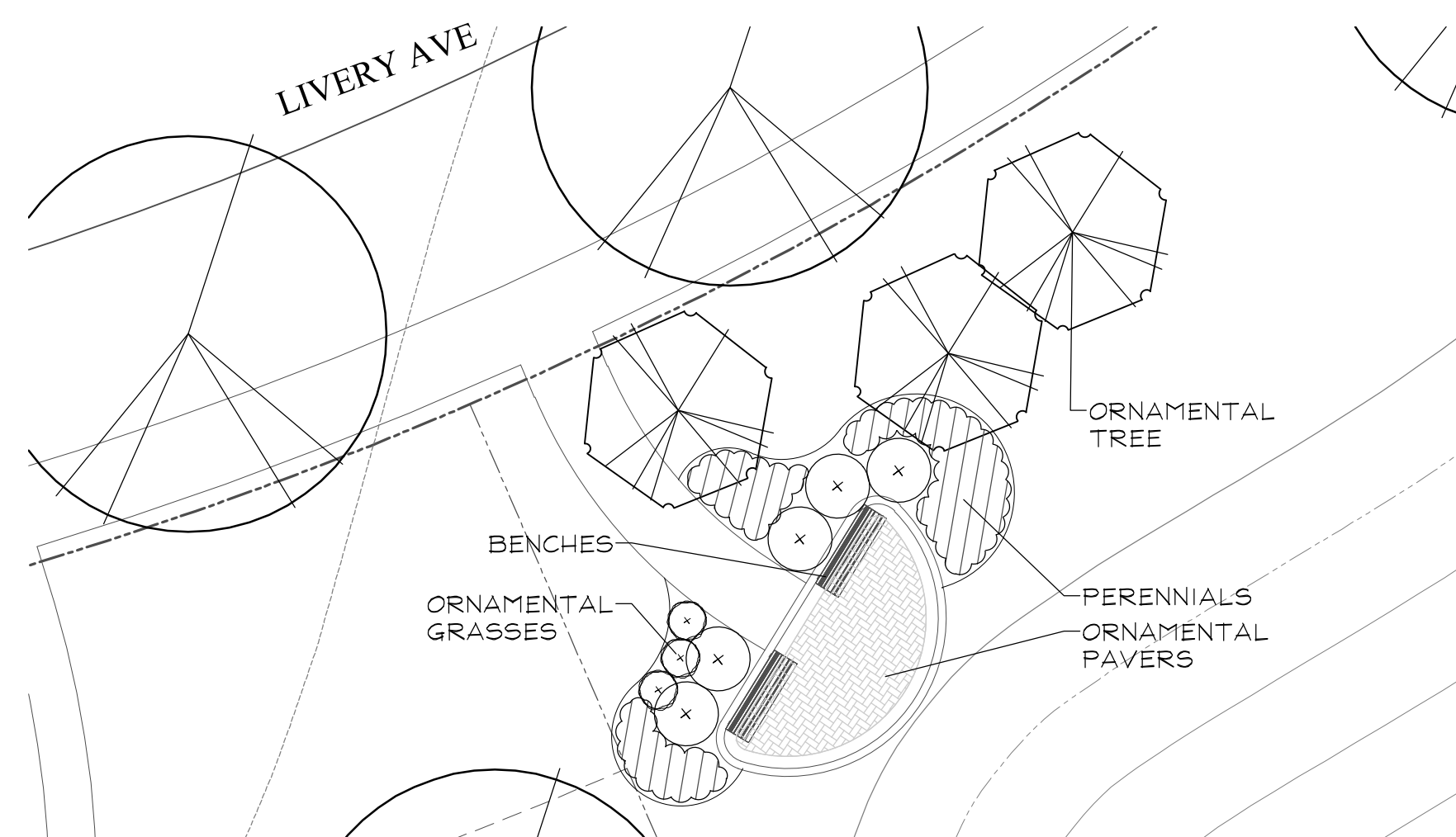
POLO CLUB
NAPERVILLE, ILLINOIS
PRELIMINARY LANDSCAPE PLAN

NO.	DATE
13	11.22.19
12	10.25.19
11	02.15.19
10	01.28.19
9	01.04.19
8	12.07.18
7	10.18.18
6	10.02.18
5	9.28.18
4	7.30.18
3	7.06.18
2	6.04.18
1	5.15.18

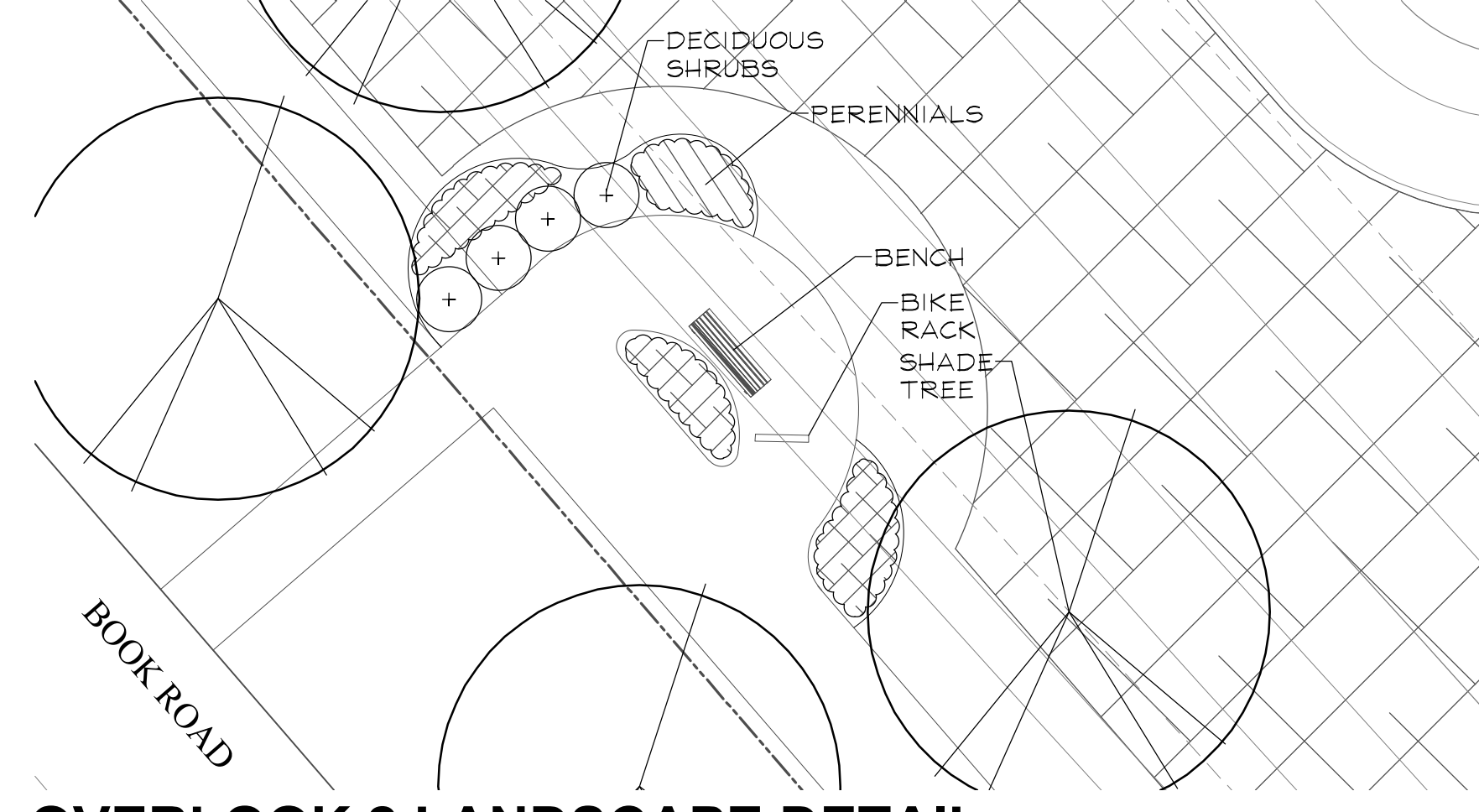
DATE 3.26.18
PROJECT NO. DR1705
DRAWN MGM
CHECKED JCT
SHEET NO.



NOTE:
1. LANDSCAPING & PARKWAY TREES TO BE ADJUSTED AROUND UTILITIES ON FINAL LANDSCAPE PLANS.
2. TREES SHALL BE INSTALLED A MINIMUM OF FIVE (5) FEET HORIZONTALLY FROM UNDERGROUND ELECTRICAL FEEDERS, SANITARY SEWERS, SANITARY SERVICES, WATER MAINS, AND WATER SERVICES. TREES SHALL BE INSTALLED A MINIMUM OF TEN (10) FEET HORIZONTALLY FROM UTILITY STRUCTURES AND APPURTENANCES, INCLUDING, BUT NOT LIMITED TO, MANHOLES, VALVE VAULTS, VALVE BOXES AND FIRE HYDRANTS.



OVERLOOK 1 LANDSCAPE DETAIL
SCALE: 1"=10'



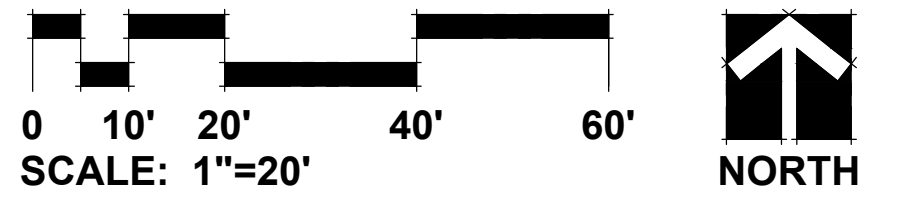
OVERLOOK 2 LANDSCAPE DETAIL
SCALE: 1"=10'



H.O.A. PARK DETAIL
SCALE: 1"=40'

NOTE:
1. LANDSCAPING & PARKWAY TREES TO BE ADJUSTED AROUND UTILITIES ON FINAL LANDSCAPE PLANS.
2. TREES SHALL BE INSTALLED A MINIMUM OF FIVE (5) FEET HORIZONTALLY FROM UNDERGROUND ELECTRICAL FEEDERS, SANITARY SEWERS, SANITARY SERVICES, WATER MAINS, AND WATER SERVICES. TREES SHALL BE INSTALLED A MINIMUM OF TEN (10) FEET HORIZONTALLY FROM UTILITY STRUCTURES AND APPURTENANCES, INCLUDING, BUT NOT LIMITED TO, MANHOLES, VALVE VAULTS, VALVE BOXES AND FIRE HYDRANTS.

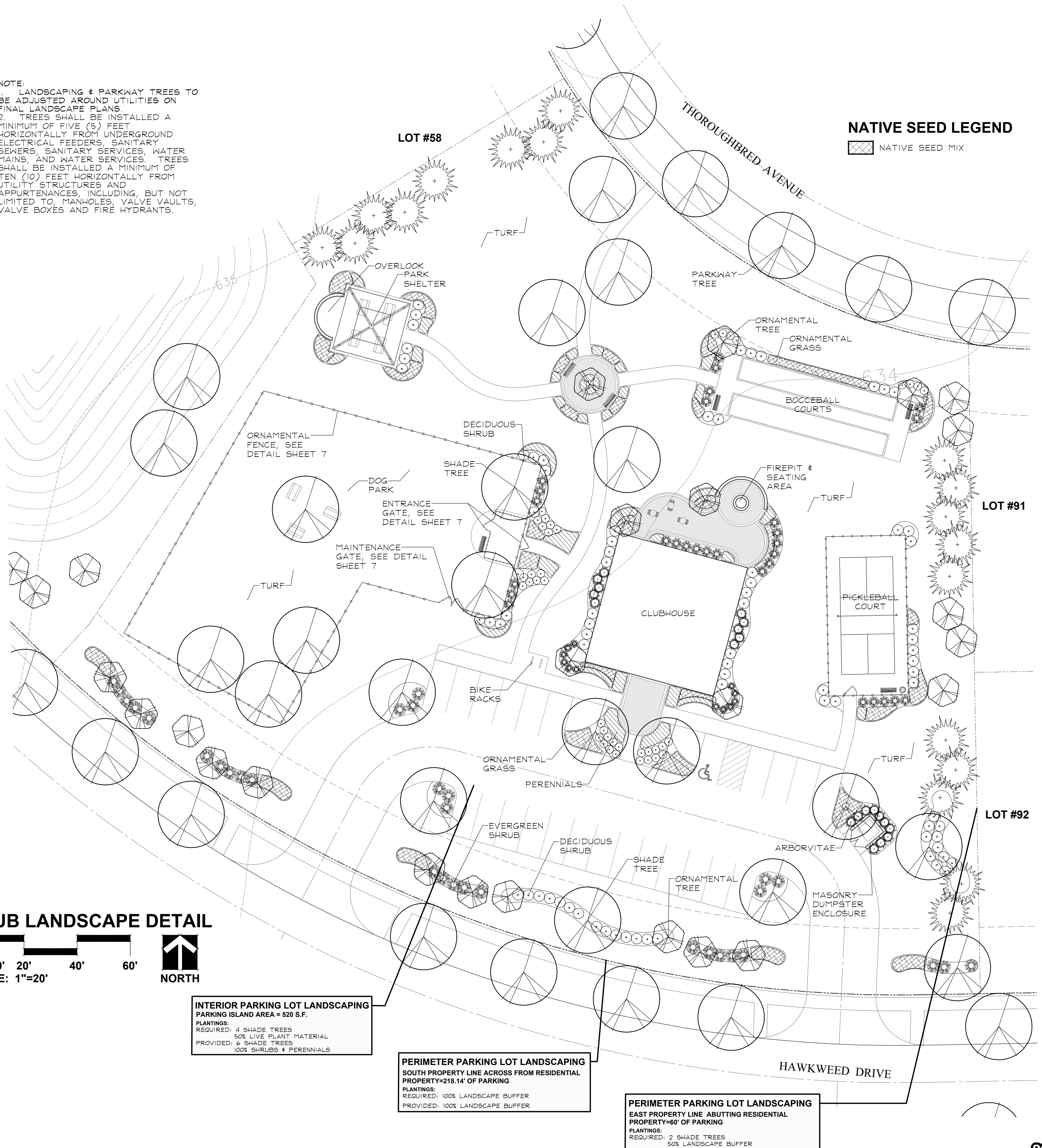
CLUB LANDSCAPE DETAIL



INTERIOR PARKING LOT LANDSCAPING
PARKING ISLAND AREA = 520 S.F.
PLANTINGS:
REQUIRED: 4 SHADE TREES
50% LIVE PLANT MATERIAL
PROVIDED: 6 SHADE TREES
100% SHRUBS & PERENNIALS

PERIMETER PARKING LOT LANDSCAPING
SOUTH PROPERTY LINE ACROSS FROM RESIDENTIAL PROPERTY=218.14' OF PARKING
PLANTINGS:
REQUIRED: 100% LANDSCAPE BUFFER
PROVIDED: 100% LANDSCAPE BUFFER

PERIMETER PARKING LOT LANDSCAPING
EAST PROPERTY LINE ABUTTING RESIDENTIAL PROPERTY=60' OF PARKING
PLANTINGS:
REQUIRED: 2 SHADE TREES
50% LANDSCAPE BUFFER
PROVIDED: 2 SHADE TREES
5 EVERGREEN TREES
11 SHRUBS



NATIVE SEED LEGEND



GRWA
GARY R. WEBER
ASSOCIATES, INC.
LAND PLANNING
ECOLOGICAL CONSULTING
LANDSCAPE ARCHITECTURE
402 WEST LIBERTY DRIVE
WHEATON, ILLINOIS 60187
PHONE: 630-668-1197

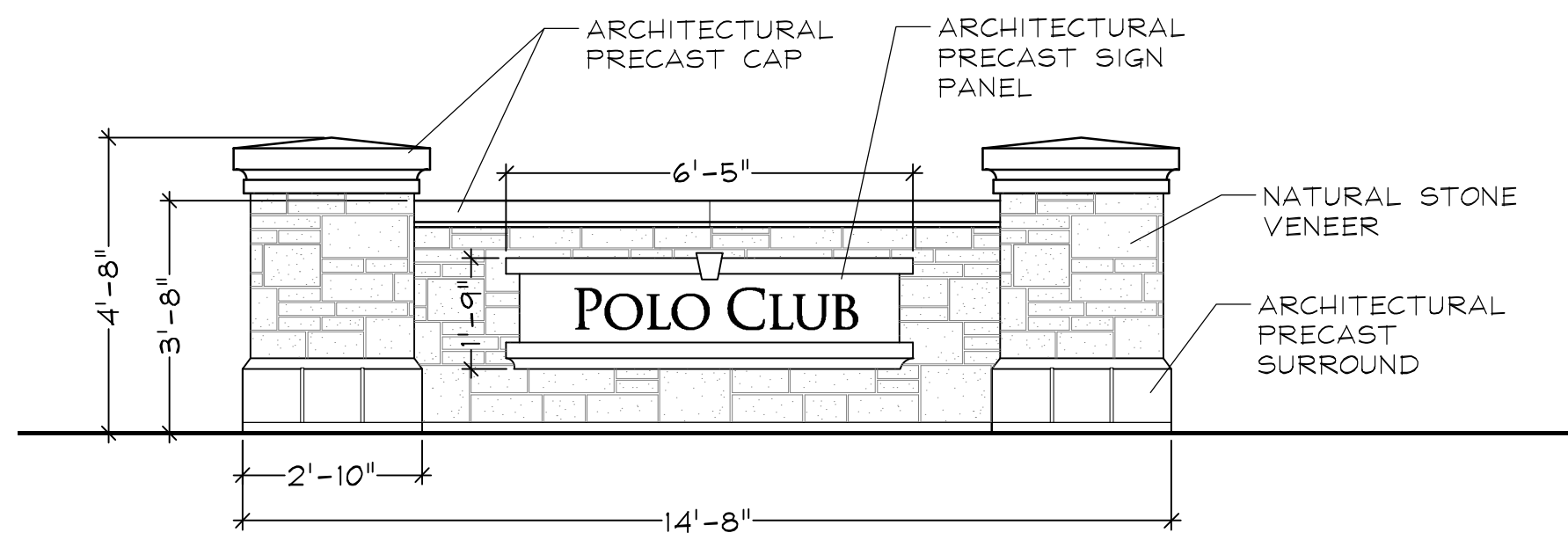
CLIENTS
D.R. HORTON
America's Builder
750 E. BUNKER COURT, SUITE 500
VERNON HILLS, IL 60061

ENGINEER
CEMCON, LTD.
2280 WHITE OAK CIR, SUITE 100
AURORA, ILLINOIS 60502

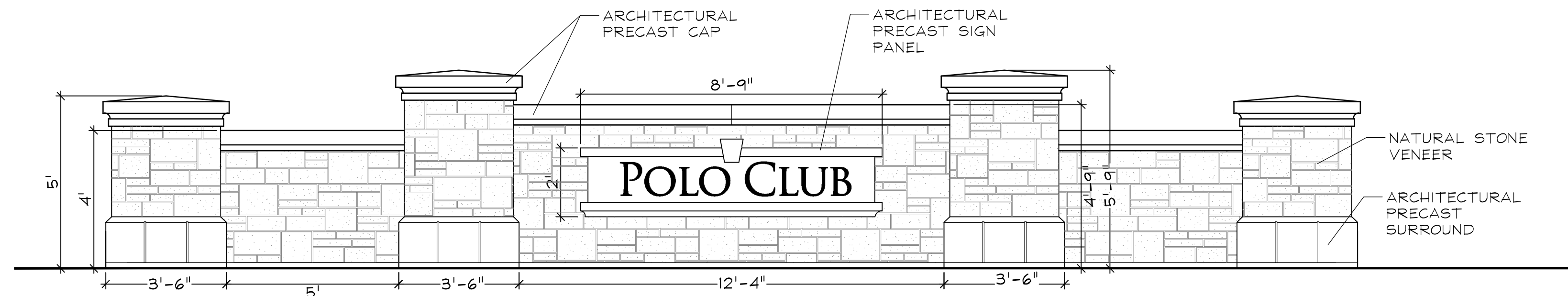
POLO CLUB
NAPERVILLE, ILLINOIS
LANDSCAPE DETAILS

NO.	DATE	REVISIONS
13	11.22.19	
12	10.25.19	
11	02.15.19	
10	01.28.19	
9	01.04.19	
8	12.07.18	
7	10.18.18	
6	10.02.18	
5	9.28.18	
4	7.30.18	
3	7.06.18	
2	6.04.18	
1	5.15.18	

DATE	3.26.18
PROJECT NO.	DR1705
DRAWN	MGH
CHECKED	JCT
SHEET NO.	

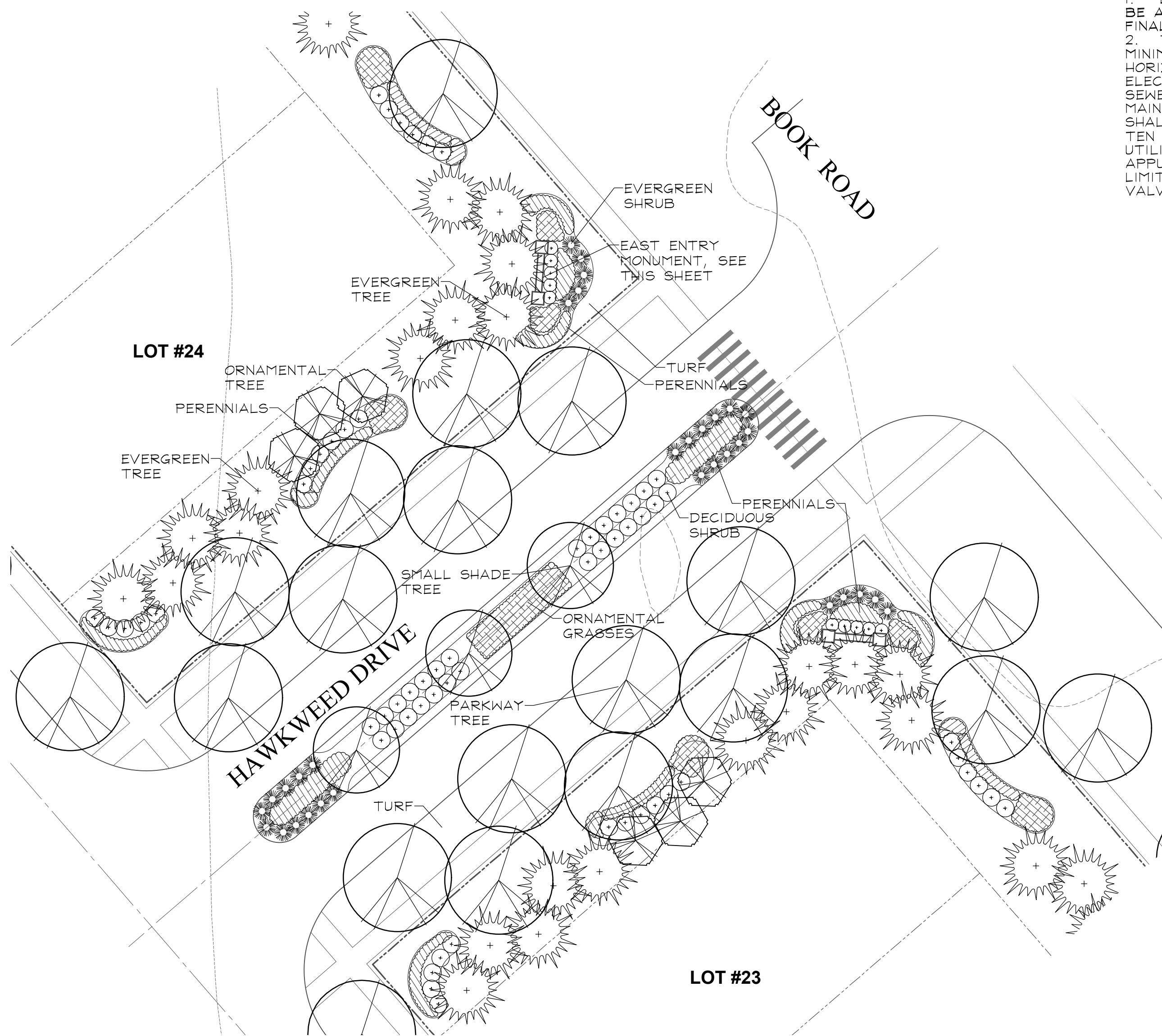


EAST ENTRY MONUMENT ELEVATION
SCALE: 3/8"=1'

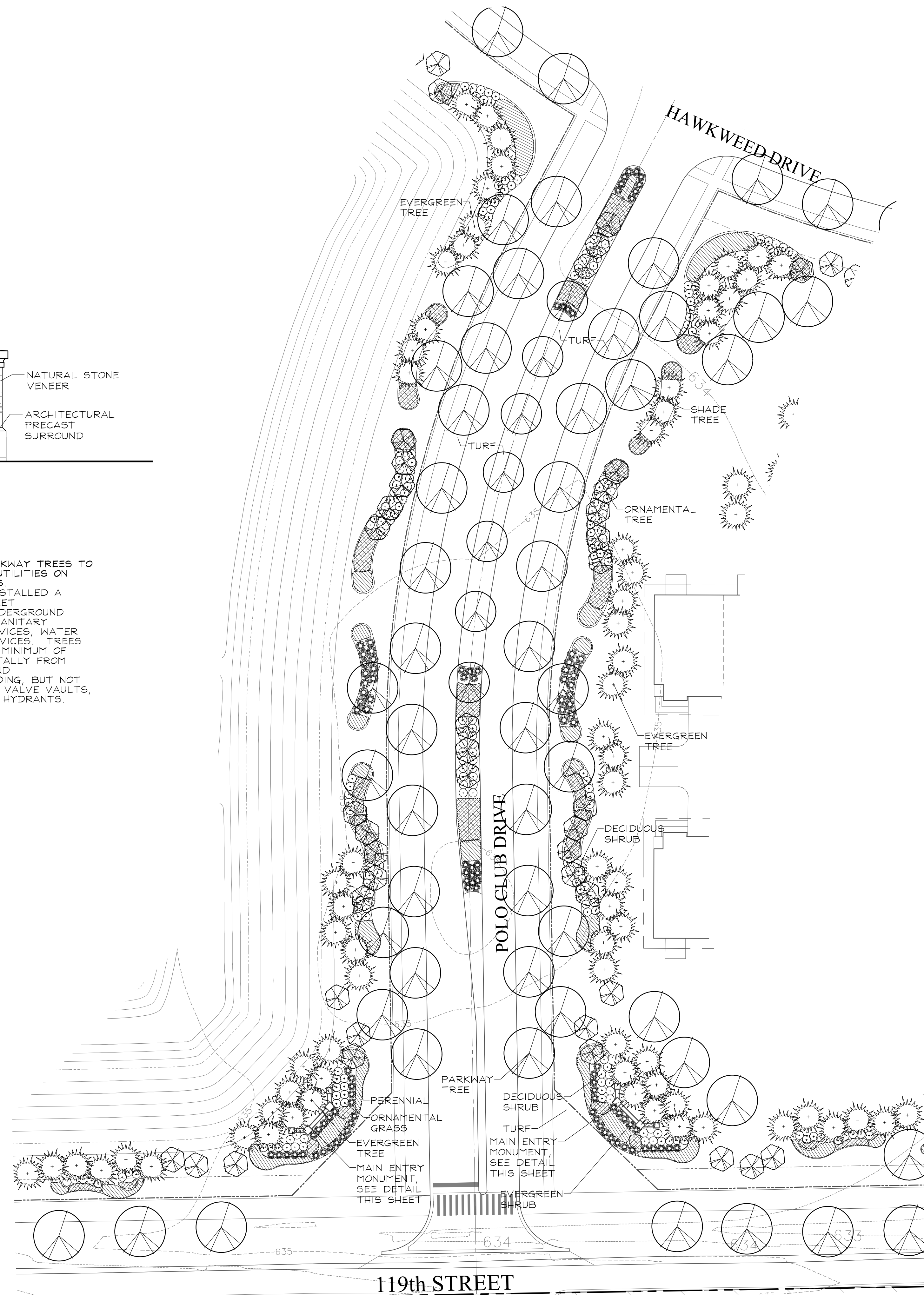
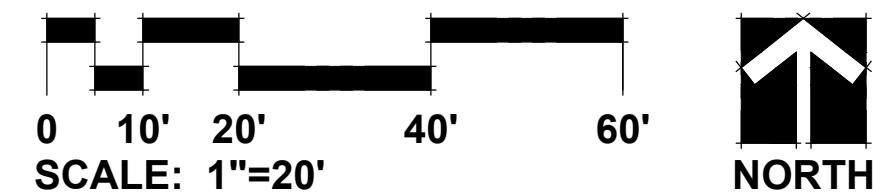


MAIN ENTRY MONUMENT ELEVATION
SCALE: 3/8"=1'

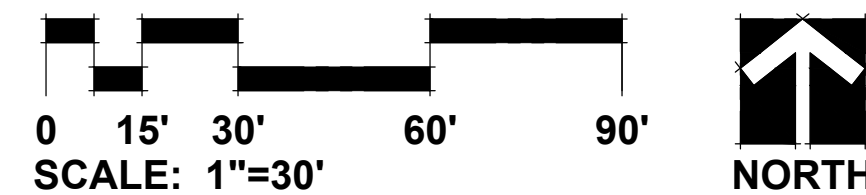
NOTE:
1. LANDSCAPING & PARKWAY TREES TO BE ADJUSTED AROUND UTILITIES ON FINAL LANDSCAPE PLANS.
2. TREES SHALL BE INSTALLED A MINIMUM OF FIVE (5) FEET HORIZONTALLY FROM UNDERGROUND ELECTRICAL FEEDERS, SANITARY SEWERS, SANITARY SERVICES, WATER MAINS, AND WATER SERVICES. TREES SHALL BE INSTALLED A MINIMUM OF TEN (10) FEET HORIZONTALLY FROM UTILITY STRUCTURES AND APPURTENANCES, INCLUDING, BUT NOT LIMITED TO, MANHOLES, VALVE VAULTS, VALVE BOXES AND FIRE HYDRANTS.



EAST ENTRANCE LANDSCAPE DETAIL



MAIN ENTRANCE LANDSCAPE DETAIL



REVISIONS	DATE
13	11.22.19
12	10.25.19
11	02.15.19
10	01.28.19
9	01.04.19
8	12.07.18
7	10.18.18
6	10.02.18
5	9.28.18
4	7.30.18
3	7.06.18
2	6.04.18
1	5.15.18

DATE	3.26.18
PROJECT NO.	DR1705
DRAWN	MGM
CHECKED	JCT
SHEET NO.	



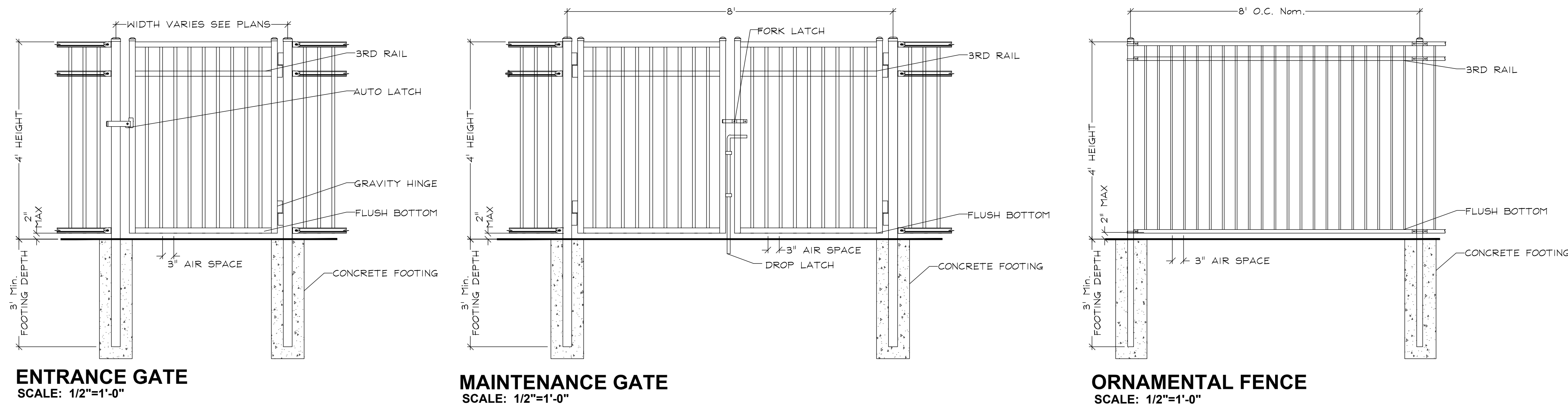
GARY R. WEBER
ASSOCIATES, INC.
LAND PLANNING
ECOLOGICAL CONSULTING
LANDSCAPE ARCHITECTURE
402 WEST LIBERTY DRIVE
WHEATON, ILLINOIS 60187
PHONE: 630-668-7197

CLIENTS

D.R. HORTON
America's Builder
750 E. BUNKER COURT, SUITE 500
VERNON HILLS, IL 60061

ENGINEER

CEMCON, LTD.
2280 WHITE OAK CIR, SUITE 100
AURORA, ILLINOIS 60502

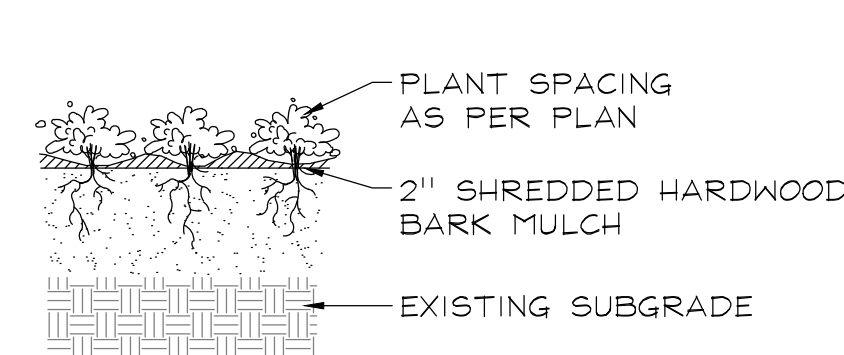


ENTRANCE GATE
SCALE: 1/2"=1'-0"

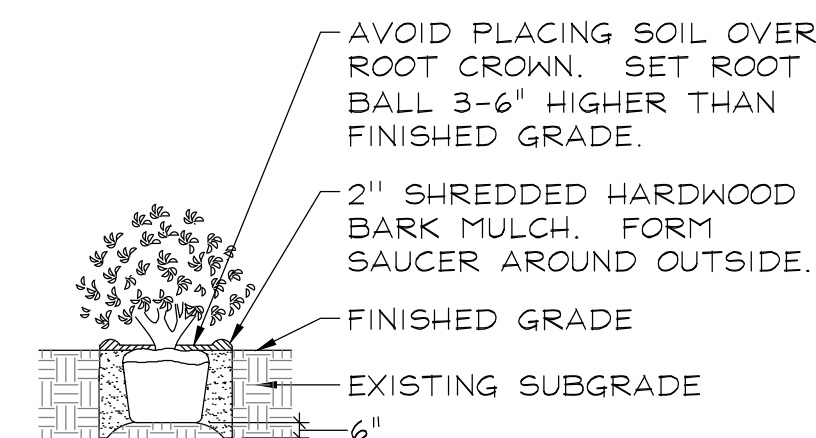
MAINTENANCE GATE
SCALE: 1/2"=1'-0"

ORNAMENTAL FENCE
SCALE: 1/2"=1'-0"

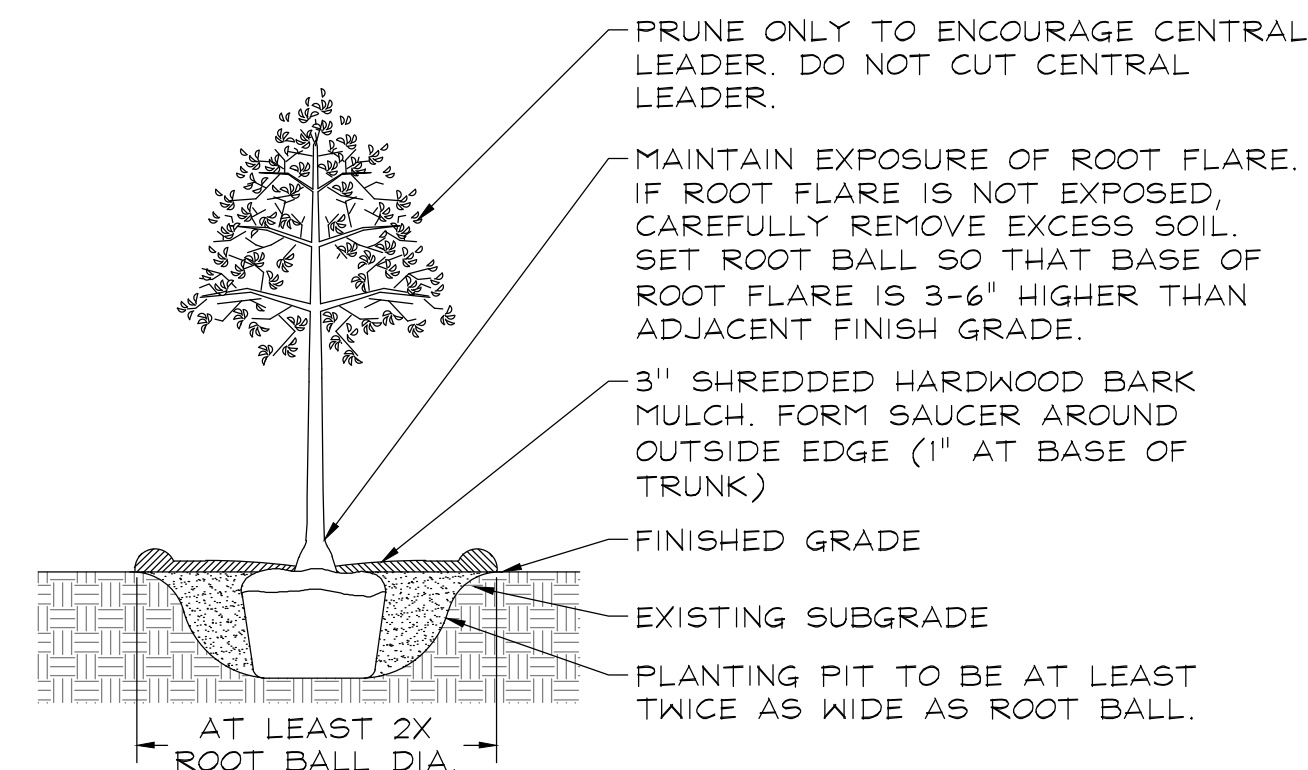
PLANTING DETAILS



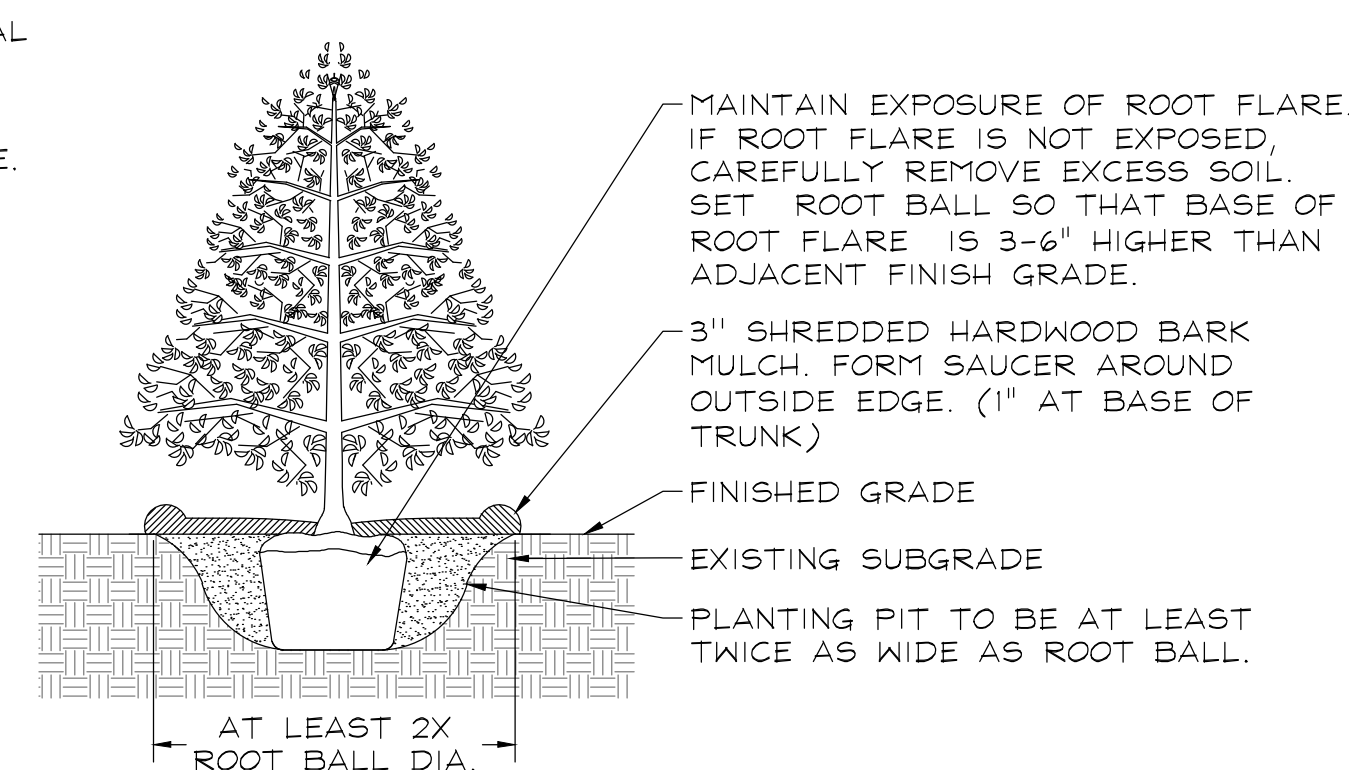
PERENNIALS AND GROUNDCOVERS
NOT TO SCALE



DECIDUOUS AND EVERGREEN SHRUBS
NOT TO SCALE



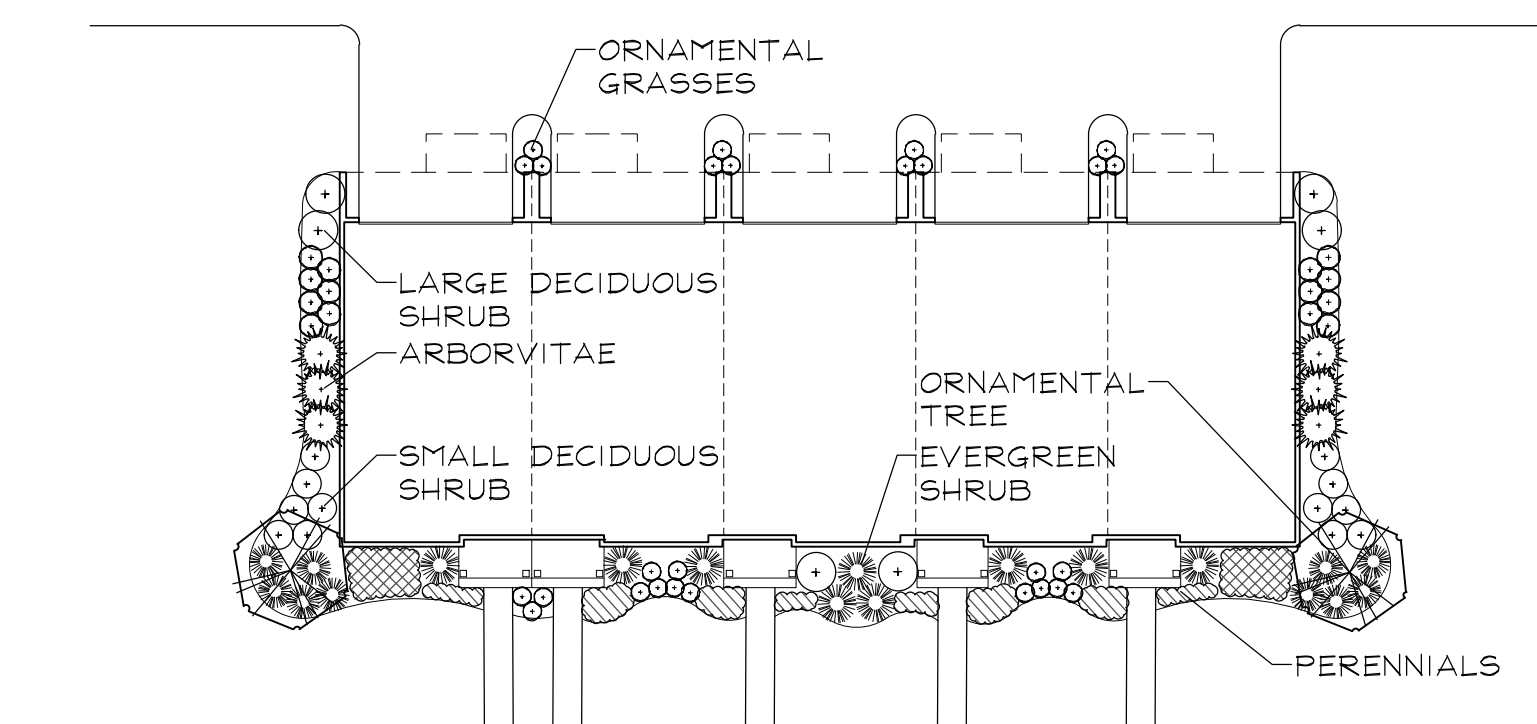
DECIDUOUS TREES
NOT TO SCALE



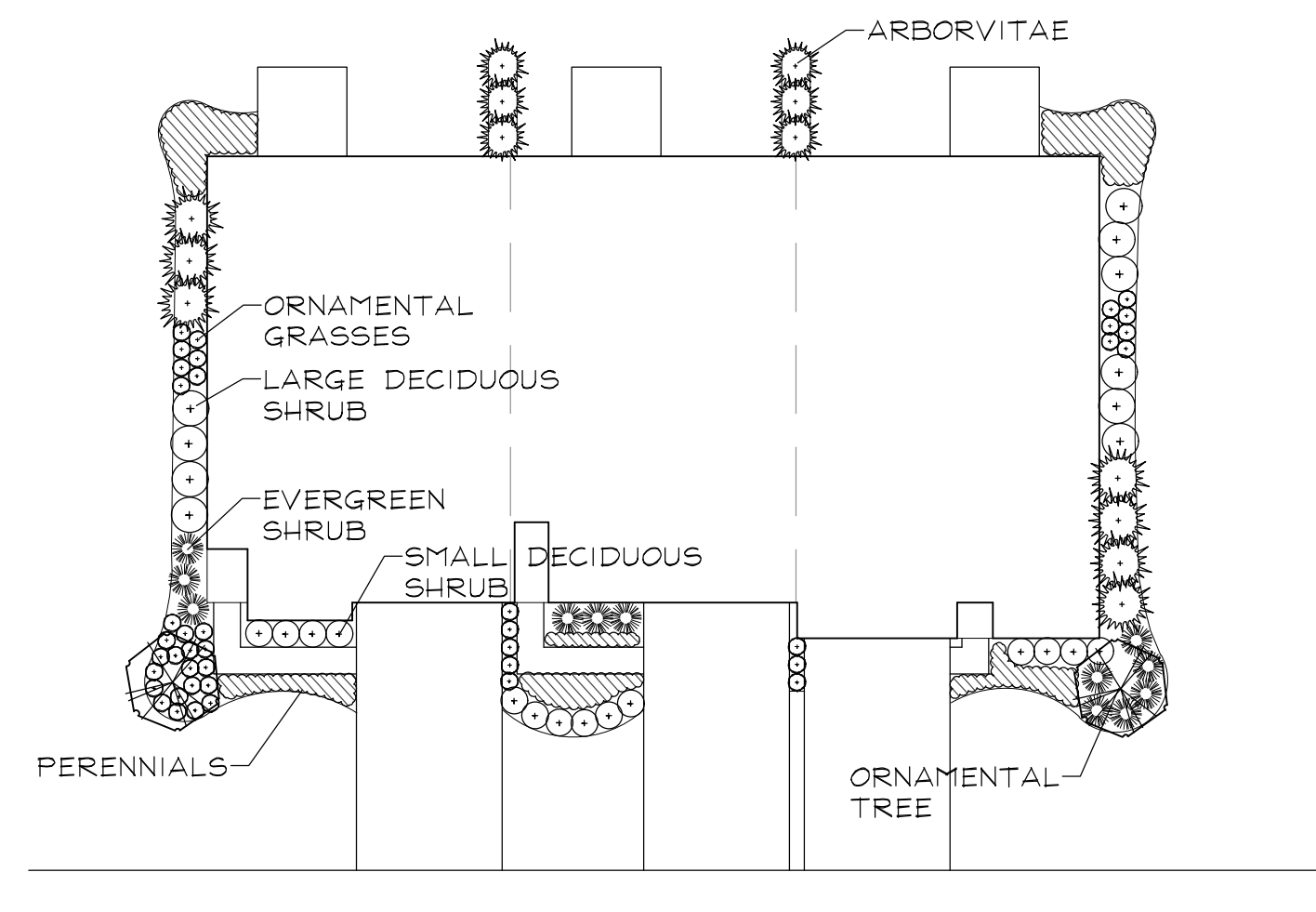
EVERGREEN TREES
NOT TO SCALE

FOUNDATION PLAN REPRESENTATIVE PLANT LIST

Key	Botanical/Common Name	Size	Remarks	
[Symbol]	ORNAMENTAL TREES			
	Amelanchier grandiflora	6' Tall	Multi-Stem	
	APPLE SERVICEBERRY			
	Cornus mas	6' Tall	Multi-Stem	
	CORNELIANCHERRY DOGWOOD			
	Magnolia stellata 'Royal Star'	6' Tall	Multi-Stem	
	ROYAL STAR MAGNOLIA			
	Syringa pekinensis 'Morton'	6' Tall	Multi-Stem	
	CHINA SNOW PEKING LILAC			
	[Symbol]	DECIDUOUS SHRUBS		
Hydrangea macrophylla 'Bailmer'		24" Wide	3' O.C.	
ENDLESS SUMMER HYDRANGEA				
Rhus aromatica 'Gro-low'		24" Wide	3' O.C.	
GRO-LOW FRAGRANT SUMAC				
Spiraea betulifolia 'Tor'		24" Tall	3' O.C.	
BIRCHLEAF SPIREA				
Spiraea nipponica 'Snowmound'		30" Wide	4' O.C.	
SNOWMOUND SPIREA				
Syringa patula 'Miss Kim'		30" Tall	4' O.C.	
MISS KIM LILAC				
[Symbol]	EVERGREEN SHRUBS			
	Viburnum x juddii	36" Tall	4' O.C.	
	JUDD VIBURNUM			
	Viburnum trilobum 'Redwing'	36" Tall	4' O.C.	
	HIGHBUSH CRANBERRY VIBURNUM			
	Weigela florida 'Verweil-4'	24" Tall	4' O.C.	
	SONIC BOOM RED WEIGELA			
	[Symbol]	ORNAMENTAL GRASSES & PERENNIALS		
		Juniperus chinensis var. sargentii 'Glauca'	24" Wide	4' O.C.
		BLUE SARGENT JUNIPER	6" Tall	
Taxus x media 'Densiflora'		24" Wide	3' O.C.	
DENSE YEW				
Thuja occidentalis 'Smaragd'		4' Tall	3' O.C.	
EMERALD GREEN ARBORVITAE				
[Symbol]		GROUNDCOVERS		
		Geranium sanguineum var. striatum	#SP4	12" O.C.
		STRIATUM BLOODY CRANESBILL		
	Vinca minor 'Dart's Blue'	#SP4	12" O.C.	
	DART'S BLUE PERIWINKLE			



TYPICAL TRADITIONAL TOWNHOME FOUNDATION LANDSCAPE PLAN
SCALE: 1"=20'



TYPICAL AGE-TARGETED RANCH TOWNHOME FOUNDATION LANDSCAPE PLAN
SCALE: 1"=20'

POLO CLUB
NAPERVILLE, ILLINOIS
TYPICAL FOUNDATION LANDSCAPE PLANS

REVISIONS	DATE	DESCRIPTION
13	11.22.19	
12	10.25.19	
11	02.15.19	
10	01.28.19	
9	01.04.19	
8	12.07.18	
7	10.18.18	
6	10.02.18	
5	9.28.18	
4	7.30.18	
3	7.06.18	
2	6.04.18	
1	5.15.18	

DATE	3.26.18
PROJECT NO.	DR1705
DRAWN	MGM
CHECKED	JCT
SHEET NO.	





GARY R. WEBER
ASSOCIATES, INC.
LAND PLANNING
ECOLOGICAL CONSULTING
LANDSCAPE ARCHITECTURE
402 WEST LIBERTY DRIVE
WHEATON, ILLINOIS 60187
PHONE: 630-668-7197

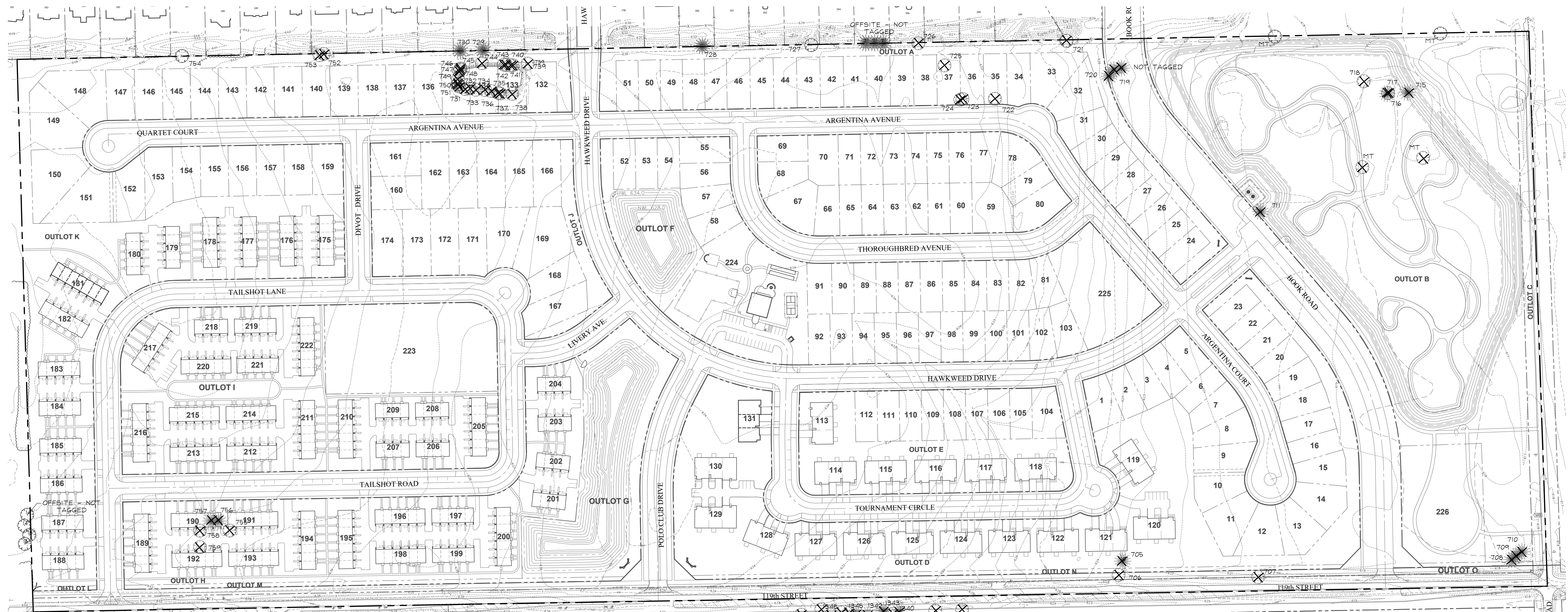
CLIENTS

D-R-HORTON
America's Builder
750 E. BUNKER COURT, SUITE 500
VERNON HILLS, IL 60061

ENGINEER

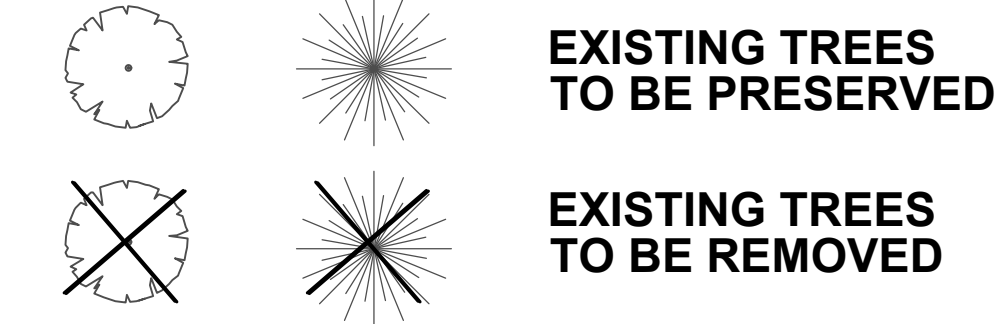
CEMCON, LTD.
2280 WHITE OAK CIR, SUITE 100
AURORA, ILLINOIS 60502

POLO CLUB
NAPERVILLE, ILLINOIS
TREE PRESERVATION PLAN



LEGEND

DECIDUOUS EVERGREEN



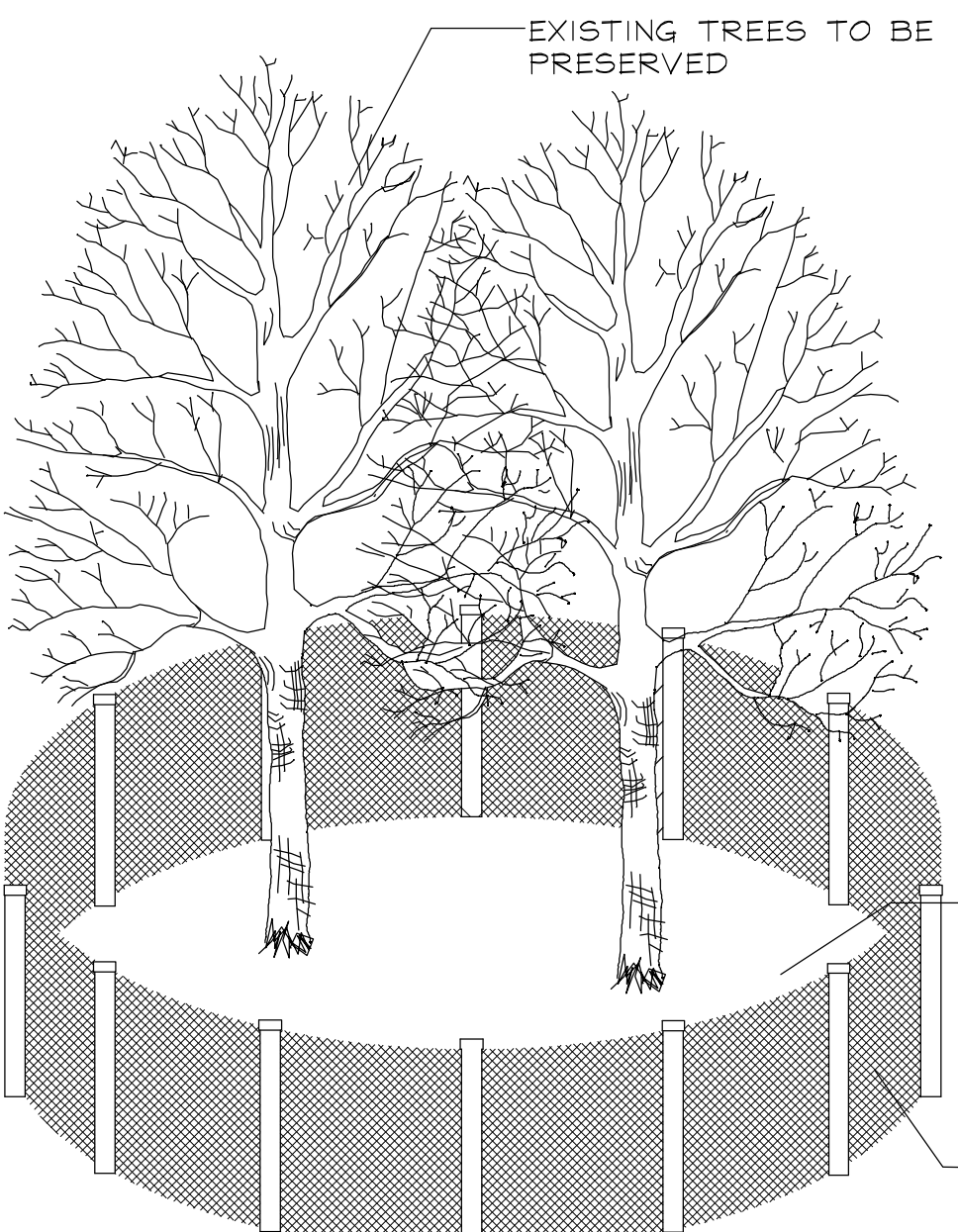
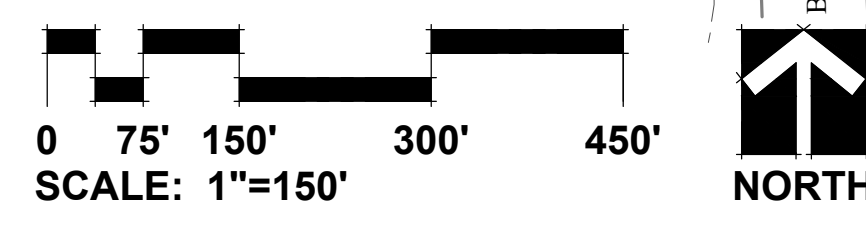
TREE PRESERVATION NOTES

- 48" high snow fence or wood barriers shall extend to the dripline of the tree or tree mass whenever possible, shall be installed before construction begins, and should not be removed until the completion of construction.
- All accidental damage to existing trees that are to be preserved shall be promptly treated as required in accordance with recognized horticultural practices and the instructions of the professional Arborist, Landscape Architect or Horticulturist.
- Broken or badly bruised branches shall be removed with a clean cut. It is recommended by the professional Arborist, Landscape Architect or Horticulturist.
- Care shall be exercised by the contractors to protect all overhead limbs and branches from damage by contact with material, machinery or equipment and by damage from engine exhaust.
- Contractors shall protect trees and vegetation against spills or discharge of fuels, lubricating oils, hydraulic fluids, anti-freeze and coolants, calcium chloride, lime and all other similar hydrocarbons, organic chemicals, and other materials which can be harmful.
- When underground utilities are proposed within 5' of a preserved tree trunk, they must be augered if possible.

TREE INVENTORY

TAG NO.	BOTANICAL NAME	COMMON NAME	SIZE	HEALTH/STRUCTURE	PROPOSED ACTION
705	<i>Picea abies</i>	Norway Spruce	8"	Good	Remove
706	<i>Acer rubra</i>	Red Maple	10"	Good	Remove
707	<i>Morus rubra</i>	Mulberry	14"	Poor; Missing/Dead Limbs	Remove
708	<i>Picea abies</i>	Norway Spruce	10"	Fair; Crowded	Remove
709	<i>Picea abies</i>	Norway Spruce	7"	Fair; Crowded	Remove
710	<i>Picea abies</i>	Norway Spruce	14"	Fair; Crowded	Remove
711	<i>Pinus nigra</i>	Austrian Pine	10"	Poor; Leaning	Remove
712	<i>Malus</i>	Apple/Crab	12"	Poor; Missing/Dead Limbs	Remove
713	<i>Pinus nigra</i>	Austrian Pine	6"	Poor; Crowded	Remove
714	<i>Salix nigra</i>	Black Willow	14", 10", 12"	Poor; Missing/Dead Limbs	Remove
715	<i>Pinus nigra</i>	Austrian Pine	10"	Poor; Missing/Dead Limbs	Remove
716	<i>Morus rubra</i>	Mulberry	14"	Poor; Missing/Dead Limbs	Remove
717	<i>Pinus nigra</i>	Austrian Pine	10"	Poor; Missing/Dead Limbs	Remove
718	<i>Salix nigra</i>	Black Willow	20"	Poor; Missing/Dead Limbs	Remove
719	<i>Picea abies</i>	Norway Spruce	10"	Fair	Remove
720	<i>Picea abies</i>	Norway Spruce	14"	Fair	Remove
721	<i>Malus</i>	Apple/Crab	14"	Poor; Missing/Dead Limbs	Remove
722	<i>Morus rubra</i>	Mulberry	10"	Poor; Missing/Dead Limbs	Remove
723	<i>Salix nigra</i>	Black Willow	10", 6"	Poor; Leaning	Remove
724	<i>Salix nigra</i>	Black Willow	10"	Poor; Crowded	Remove
725	<i>Acer rubra</i>	Red Maple	10", 14"	Poor; Split Risk	Remove
726	<i>Acer rubra</i>	Red Maple	50", 34"	Fair; Split Risk	Remove
727	<i>Acer rubra</i>	Red Maple	24", 20", 27"	Good	Preserve
728	<i>Pinus nigra</i>	Austrian Pine	9"	Fair; Missing/Dead Limbs	Off Site
729	<i>Pinus strobus</i>	White Pine	7"	Good	Off Site
730	<i>Pinus strobus</i>	White Pine	9"	Good	Off Site
731	<i>Populus deltoides</i>	Eastern Cottonwood	16"	Poor; Leaning	Remove
732	<i>Populus deltoides</i>	Eastern Cottonwood	16"	Poor; Leaning	Remove
733	<i>Populus deltoides</i>	Eastern Cottonwood	14", 10"	Poor; Split Risk	Remove
734	<i>Populus deltoides</i>	Eastern Cottonwood	10", 12", 6"	Poor; Split Risk	Remove
735	<i>Populus deltoides</i>	Eastern Cottonwood	12"	Poor; Leaning	Remove
736	<i>Populus deltoides</i>	Eastern Cottonwood	16"	Fair	Remove
737	<i>Populus deltoides</i>	Eastern Cottonwood	18"	Poor; Leaning	Remove
738	<i>Salix nigra</i>	Black Willow	6", 8", 12"	Poor; Split Risk	Remove

NOTE: TREES NUMBERED 1337-1349 SHOWN AT APPROXIMATE LOCATION ONLY. TREES TO BE SURVEYED AT FINAL



TREE PRESERVATION DETAIL

TAG NO.	BOTANICAL NAME	COMMON NAME	SIZE	HEALTH/STRUCTURE	PROPOSED ACTION
739	<i>Populus deltoides</i>	Eastern Cottonwood	6", 8"	Poor; Split Risk	Remove
740	<i>Populus deltoides</i>	Eastern Cottonwood	6", 12", 10"	Poor; Split Risk	Remove
741	<i>Populus deltoides</i>	Eastern Cottonwood	32"	Poor; Leaning	Remove
742	<i>Populus deltoides</i>	Eastern Cottonwood	12", 12"	Poor; Split Risk	Remove
743	<i>Morus rubra</i>	Mulberry	4", 4", 4"	Poor; Missing/Dead Limbs	Remove
744	<i>Malus</i>	Apple/Crab	5"	Good	Remove
745	<i>Populus deltoides</i>	Eastern Cottonwood	16"	Poor; Leaning	Remove
746	<i>Populus deltoides</i>	Eastern Cottonwood	16"	Poor; Leaning	Remove
747	<i>Populus deltoides</i>	Eastern Cottonwood	6"	Poor; Leaning	Remove
748	<i>Populus deltoides</i>	Eastern Cottonwood	14"	Poor; Leaning	Remove
749	<i>Populus deltoides</i>	Eastern Cottonwood	12"	Poor; Leaning	Remove
750	<i>Populus deltoides</i>	Eastern Cottonwood	16"	Poor; Leaning	Remove
751	<i>Populus deltoides</i>	Eastern Cottonwood	30"	Poor; Leaning	Remove
752	<i>Acer Negundo</i>	Box Elder	8", 7", 6"	Poor; Crowded	Remove
753	<i>Acer Negundo</i>	Box Elder	9", 4", 6"	Poor; Crowded	Remove
754	<i>Celtis occidentalis</i>	Common Hackberry	16", 14", 12"	Good	Preserve
755	<i>Gleditsia triacanthos</i>	Honey Locust	32"	Fair; Missing/Dead Limbs	Remove
756	<i>Pinus nigra</i>	Austrian Pine	26"	Poor; Missing/Dead Limbs	Remove
757	<i>Pinus nigra</i>	Austrian Pine	24"	Poor; Leaning	Remove
758	<i>Gleditsia triacanthos</i>	Honey Locust	28"	Fair; Missing/Dead Limbs	Remove
759	<i>Gleditsia triacanthos</i>	Honey Locust	44"	Fair; Missing/Dead Limbs	Remove
1337	<i>Quercus macrocarpa</i>	Burr Oak	27	Good	Remove
1338	<i>Quercus macrocarpa</i>	Burr Oak	33	Excellent	Remove
1339	<i>Magnolia sp.</i>	Magnolia	10/16	Poor	Remove
1340	<i>Picea sp.</i>	Spruce	20	Good	Remove
1341	<i>Acer saccharum</i>	Sugar Maple	38	Fair	Remove
1342	<i>Morus alba</i>	White Mulberry	9/5/5	Poor	Remove
1343	<i>Picea sp.</i>	Spruce	12	Good	Remove
1344	<i>Picea sp.</i>	Spruce	18	Good	Remove
1345	<i>Picea sp.</i>	Spruce	21	Good	Remove
1346	<i>Morus alba</i>	White Mulberry	10/5/4/4	Poor	Remove
1347	<i>Acer saccharum</i>	Sugar Maple	44	Good	Remove
1348	<i>Picea sp.</i>	Spruce	34	Good	Remove
1349	<i>Acer saccharum</i>	Sugar Maple	28	Excellent	Remove

NO.	DATE	REVISIONS
13	11.22.19	
12	10.25.19	
11	02.15.19	
10	01.28.19	
9	01.04.19	
8	12.07.18	
7	10.18.18	
6	10.02.18	
5	9.28.18	
4	7.30.18	
3	7.06.18	
2	6.04.18	
1	5.15.18	

DATE 3.26.18
PROJECT NO. DR1705
DRAWN MGM
CHECKED JCT
SHEET NO.