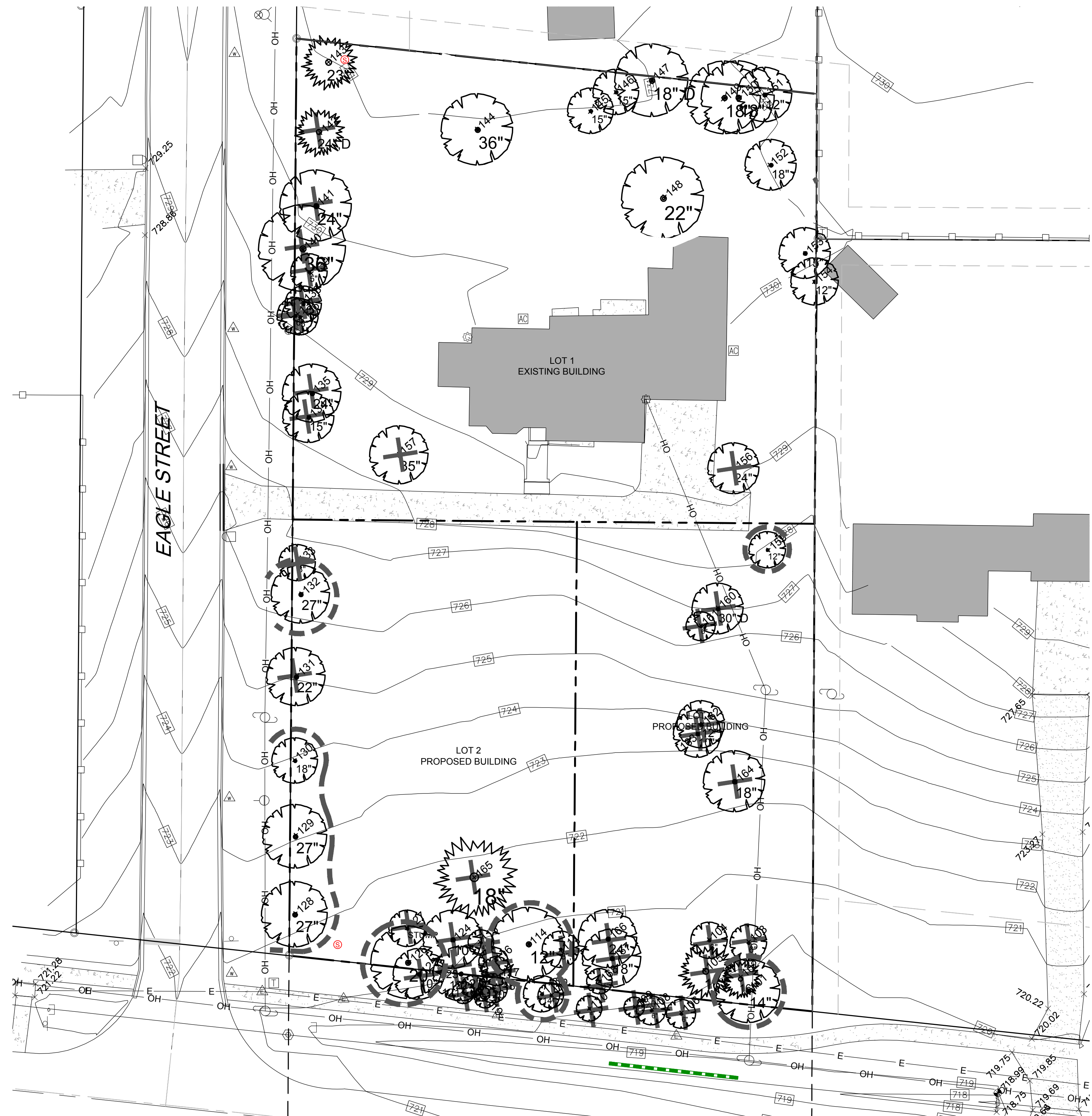


SURVEY OF EXISTING TREES

TREE #	SIZE	SCIENTIFIC NAME	COMMON NAME	LOCATION	COMMENTS
101	14"	JUGLANS NIGRA	BLACK WALNUT	SOUTHEAST	PROTECT
102	16"	PICEA PUNGENS	GREEN SPRUCE	SOUTHEAST	REMOVE
103	6"	ULMUS PUMILA	SIBERIAN ELM	SOUTHEAST	REMOVE
104	6"	ULMUS PUMILA	SIBERIAN ELM	SOUTHEAST	REMOVE
105	16"	PICEA PUNGENS	GREEN SPRUCE	SOUTHEAST	REMOVE
106	6"	CRATAEGOUS	BUCKTHORN	SOUTHEAST	REMOVE
108	4"	CRATAEGOUS	BUCKTHORN	SOUTHEAST	REMOVE
109	4"	CRATAEGOUS	BUCKTHORN	SOUTHEAST	REMOVE
110	4"	CRATAEGOUS	BUCKTHORN	SOUTHEAST	REMOVE
111	8"	DEAD STUMP	DEAD STUMP	SOUTH	DEAD STUMP - REMOVE
112	4"	CRATAEGOUS	BUCKTHORN	SOUTH	REMOVE
113	14"	JUGLANS NIGRA	BLACK WALNUT	SOUTHEAST	PROTECT
114	12"	JUGLANS NIGRA	BLACK WALNUT	SOUTH	PROTECT
115	4"	CRATAEGOUS	BUCKTHORN	SOUTHEAST	REMOVE
116	4"	CRATAEGOUS	BUCKTHORN	SOUTHEAST	REMOVE
117	4"	CRATAEGOUS	BUCKTHORN	SOUTHWEST	REMOVE
118	7"	CRATAEGOUS	BUCKTHORN	SOUTHWEST	REMOVE
119	4"	CRATAEGOUS	BUCKTHORN	SOUTHWEST	REMOVE
120	4"	CRATAEGOUS	BUCKTHORN	SOUTHWEST	REMOVE
121	4"	CRATAEGOUS	BUCKTHORN	SOUTHWEST	REMOVE
122	4"	CRATAEGOUS	BUCKTHORN	SOUTHWEST	REMOVE
123	12"	ACER NEGUNDO	BOX ELDER	SOUTHWEST	REMOVE- WEED TREE
124	10"	JUGLANS NIGRA	BLACK WALNUT	SOUTHWEST	PROTECT
125	10"	ACER NEGUNDO	BOX ELDER	SOUTHWEST	REMOVE- WEED TREE
126	20"	JUGLANS NIGRA	BLACK WALNUT	SOUTHWEST	PROTECT
127	8"	DEAD STUMP	DEAD STUMP	SOUTHWEST	DEAD STUMP - REMOVE
128	27"	ACER PLATANOIDES	NORWAY MAPLE	SOUTHWEST	TOPPED TREE - PROTECT
129	27"	ACER PLATANOIDES	NORWAY MAPLE	SOUTHWEST	PROTECT
130	18"	ACER PLATANOIDES	NORWAY MAPLE	SOUTHWEST	PROTECT
131	22"	ACER PLATANOIDES	NORWAY MAPLE	WEST	REMOVE
132	27"	ACER SACCHARINUM	SILVER MAPLE	WEST	PROTECT
133	3"	CRATAEGOUS	BUCKTHORN	WEST	CROWDED REMOVE
134	15"	ULMUS PUMILA	SIBERIAN ELM	WEST	REMOVE
135	24"	ULMUS PUMILA	SIBERIAN ELM	WEST	REMOVE
136	6"	CRATAEGOUS	BUCKTHORN	WEST	REMOVE
137	5"	CRATAEGOUS	BUCKTHORN	WEST	REMOVE
138	4"	CRATAEGOUS	BUCKTHORN	WEST	REMOVE
139	5"	CRATAEGOUS	BUCKTHORN	NORTHWEST	REMOVE
140	36"	ULMUS PUMILA	SIBERIAN ELM	NORTHWEST	REMOVE
141	24"	ULMUS PUMILA	SIBERIAN ELM	NORTHWEST	REMOVE
142	24"	DEAD STUMP	DEAD STUMP	NORTHWEST	DEAD STUMP - REMOVE
143	23"	PICEA PUNGENS	GREEN SPRUCE	NORTHWEST	PROTECT
144	36"	QUERCUS RUBRA	NORTHERN RED OAK	NORTH	PROTECT
145	15"	ACER PLATANOIDES	NORWAY MAPLE	NORTH	PROTECT
146	15"	MORUS ALBA	RUSSIAN MULBERRY	NORTHEAST	PROTECT
147	18"	ULMUS PUMILA	SIBERIAN ELM	NORTHEAST	PROTECT
148	22"	ACER PLATANOIDES	NORWAY MAPLE	NORTHEAST	PROTECT
149	18"	PRUNUS SEROTINA	BLACK CHERRY	NORTHEAST	PROTECT
150	18"	PRUNUS SEROTINA	BLACK CHERRY	NORTHEAST	PROTECT
151	12"	ACER SACCHARINUM	SILVER MAPLE	NORTHEAST	PROTECT
152	18"	ACER SACCHARINUM	SILVER MAPLE	NORTHEAST	PROTECT
153	15"	JUGLANS NIGRA	BLACK WALNUT	NORTHEAST	PROTECT
154	12"	MORUS NIGRA	BLACK MULBERRY	NORTHEAST	PROTECT
156	24"	ACER PLATANOIDES	NORWAY MAPLE	NORTHEAST	REMOVE
157	35"	ACER PLATANOIDES	NORWAY MAPLE	WEST	DAMAGED - REMOVE
159	12"	MORUS NIGRA	BLACK MULBERRY	EAST	PROTECT
160	30"	DEAD STUMP	DEAD STUMP	EAST	DEAD STUMP - REMOVE
161	6"	MORUS NIGRA	BLACK MULBERRY	EAST	REMOVE
162	12"	MORUS ALBA	RUSSIAN MULBERRY	EAST	REMOVE
163	10"	MORUS NIGRA	BLACK MULBERRY	EAST	REMOVE
164	18"	MALUS PUMILA	PARADISE APPLE	EAST	REMOVE
165	18"	PICEA PUNGENS	GREEN SPRUCE	SOUTHWEST	DEAD - REMOVE
166	24"	ACER PLATANOIDES	NORWAY MAPLE	SOUTHEAST	REMOVE
167	18"	JUGLANS NIGRA	BLACK WALNUT	SOUTHEAST	REMOVE
168	15"	DEAD	DEAD	SOUTHEAST	DEAD - REMOVE

TREE PROTECTION & REMOVAL NOTES

- CONTRACTOR SHALL OBTAIN ALL NECESSARY STATE AND LOCAL PERMITS AND PERMISSIONS TO PRUNE, REMOVE, AND/OR TRANSPLANT ANY TREES ON SITE.
- DEAD AND DYING MATERIAL ON THE SITE SHALL BE REMOVED OR PRUNED. MATERIALS NOT LABELED ON THE PROTECTION PLAN SHALL BE BROUGHT TO THE ATTENTION OF THE LANDSCAPE ARCHITECT FOR REMEDIATION.
- DURING CONSTRUCTION EXISTING TREES OVER FOUR INCHES IN CALIPER SHALL BE PROTECTED WITH BARRIER FENCING. SEE [HTTPS://WWW.NAPERVILLE.IL.US/CONTENTASSETS/4160BB766F174B31BA5056871EEDB7E6/STANDARD-DETAILS-SECTION-700.PDF](https://www.naperville.il.us/contentassets/4160bb766f174b31ba5056871eedb7e6/standard-details-section-700.pdf) FOR DETAIL 790.10 FOR NAPERVILLE'S STANDARD TREE PRESERVATION DETAIL.
- BARRIER FENCING SHOWN ON THE PLAN IS APPROXIMATE. CONTRACTOR SHALL ADJUST LOCATION OF BARRIER TO POSITION OUTLINED IN COMMENT 4.
- NO EXCESS SOIL OR ADDITIONAL FILL, BUILDING MATERIALS OR DEBRIS SHALL BE PLACED WITHIN THE PROTECTIVE BARRIER.
- NO VEHICLES OR HEAVY MACHINERY SHALL BE ALLOWED TO WORK WITHIN THE BARRIER AREA.
- NO ATTACHMENTS OR WIRES, OTHER THAN PROTECTIVE GUY WIRES, SHALL BE ATTACHED TO ANY OF THE TREES WHICH ARE WITHIN PROTECTIVE BARRIER.
- STUMPS OR TREE REMAINS NOT TO BE FULLY EXCAVATED SHALL BE REMOVED. A STUMP GRINDER SHALL BE USED TO REMOVE ALL REMAINING ROOTS AND WOODY MATERIAL. WITHIN A 24" RADIUS OF THE TREE TRUNK TO MIN. 6" BELOW GRADE. DISTURBED AREA SHALL BE BACKFILLED WITH COMPACTED TOPSOIL TO MEET SURROUNDING GRADES.



1 TREE REMOVAL & PROTECTION PLAN

EXISTING VEGETATION DESCRIPTION

THE PROJECT SITE CONSIST OF A SINGLE FAMILY LOT SLIGHTLY LARGER THAN AN ACRE. VARIOUS MATURE TREES ARE PLANTED IN THE PARKWAYS WITH SEVERAL MATURE VARIETIES SPREAD THROUGH THE INTERIOR OF THE LOT.

FUTURE PARKWAY TREES WILL BE PROVIDED SUBJECT TO THE FOLLOWING REGULATIONS: PARKWAYS SHALL BE FINE GRADED AND SEEDED OR SODDED WITH TURF GRASS. PARKWAY TREES SHALL HAVE A MINIMUM TRUNK SIZE OF TWO AND ONE-HALF (2½) INCHES IN DIAMETER AS MEASURED SIX (6) INCHES ABOVE THE ESTABLISHED GROUND LEVEL. UNLESS OTHERWISE APPROVED IN WRITING BY THE CITY ENGINEER, AND SUBJECT TO THE REQUIREMENTS OF SUBSECTION 5-10-3.8 OF THIS SECTION AND SUBSECTION 9-3-2.3 OF THIS CODE, PARKWAY TREES SHALL BE EVENLY SPACED AT NOT MORE THAN FORTY (40) FEET APART AND NOT LESS THAN FOUR (4) FEET FROM THE ESTABLISHED SIDEWALK LINE OF SAID STREET, EXCLUSIVE OF WIDTHS OF CURB CUTS, AND THE 30-FOOT LINE OF SITE TRIANGLE AT THE INTERSECTION OF TWO (2) STREETS. PARKWAY TREES SHALL BE ALTERNATED SO THAT A MAXIMUM OF FIVE (5) TREES OF THE SAME SPECIES ARE PLANTED ADJACENTLY. PARKWAY TREES SHALL BE LIMITED TO SPECIES APPROVED BY THE DEPARTMENT OF PUBLIC WORKS.

TREE PROTECTION & REMOVAL LEGEND

- EXISTING DECIDUOUS TREE TO REMAIN
- EXISTING DECIDUOUS TREE TO BE REMOVED
- BARRIER FENCING TO BE INSTALLED

APPROVED

CITY OF NAPERVILLE
Address: Adler Point
Last Revision Date: 11/11/2021
Approval Date: 11/22/2021

SHEET SCALE 1"=20'
0' 10' 20' 40' 60'

SEAL



EXPIRES 08/2021

PROJECT TEAM

CIVIL ENGINEER:



PROJECT NAME

27 W. 130 Bauer Road,
Naperville, Illinois

DRAWING ISSUED

NO.	TITLE	DATE
1.	Issued for Permit	05/24/2021
2.	Per City Comment	08/02/2021
3.	Per City Comment	11/11/2021

SET TYPE
PRELIMINARY LANDSCAPE PLANS

PROJECT NUMBER
2104026

DATE
04/30/2021
DRAWN BY: LCG
APPROVED BY: LCG

SHEET TITLE
PRELIMINARY TREE PROTECTION & REMOVAL PLAN

SHEET NUMBER

L.1