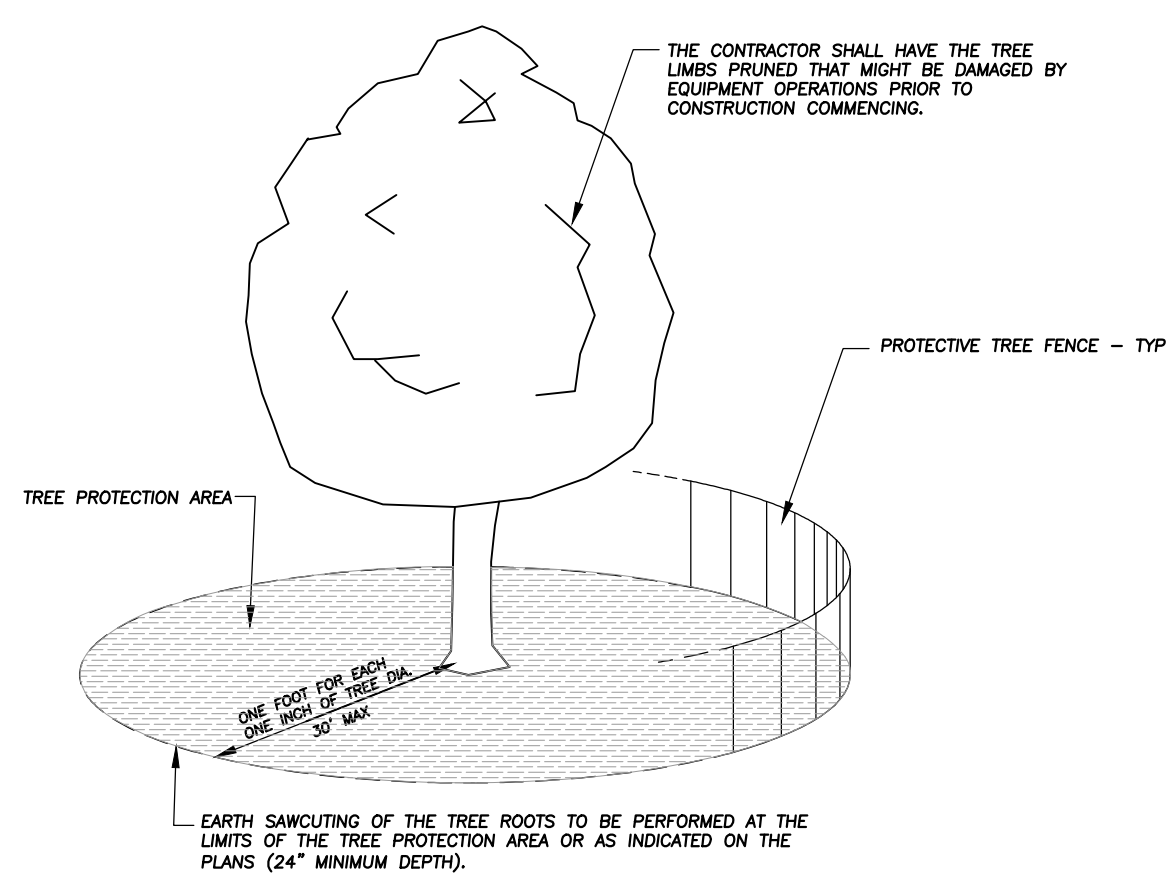


TREE PRESERVATION NOTES

1. ANY EXISTING TREES TO BE RETAINED SHALL BE PROTECTED FROM SOIL COMPACTION AND OTHER DAMAGES THAT MAY OCCUR DURING CONSTRUCTION ACTIVITIES BY ERECTING FENCING AROUND SUCH MATERIALS AT A DISTANCE OF 6.5' FROM THE TRUNK.
2. THE CONTRACTOR SHALL VERIFY THE LOCATIONS OF ALL UNDERGROUND UTILITIES PRIOR TO INITIATING PLANTING OPERATIONS. THE CONTRACTOR SHALL REPAIR/ REPLACE AND UTILITY, PAVING, CURBING, ETC., WHICH IS DAMAGED DURING PLANTING AND TREE REMOVAL OPERATIONS.
3. REFER TO PLAT OF SURVEY FOR LEGAL DESCRIPTION, BOUNDARY DIMENSIONS AND EXISTING CONDITIONS.
4. CONTRACTORS MUST VERIFY ALL QUANTITIES AND OBTAIN ALL PROPER PERMITS AND LICENSES FROM THE PROPER AUTHORITIES.
5. LANDSCAPE ARCHITECT IS NOT RESPONSIBLE FOR UNSEEN SITE CONDITIONS.
6. REMOVE ALL DEAD AND DISEASED PLANT MATERIAL FROM SITE AND DISPOSE OF PROPERLY.
7. PRUNE AND FERTILIZE ALL EXISTING VEGETATION TO REMAIN ON SITE.
8. TREE SYMBOL WITH NUMBER INDICATES EXISTING TREE TO REMAIN.
9. TREE SYMBOL WITH NUMBER AND AN "X" INDICATES EXISTING TREE TO BE REMOVED.

EXISTING TREE INVENTORY

TREE #	BOTANICAL NAME	COMMON NAME	TREE SIZE	CONDITION	COMMENTS
1	Thuja occidentalis	Arborvitae	15' Ht	Good	
2	Picea pungens glauca	Blue Spruce	12' Cal	Fair	Curved Trunk
3	Picea pungens glauca	Blue Spruce	10' Cal	Good	
4	Thuja occidentalis	Arborvitae	15' Ht	Good	
5	Picea pungens glauca	Blue Spruce	9' Cal	Good	
6	Gymnocladus dioicus 'espresso'	Kentucky Coffee Tree	6' Cal	Good	Parkway Tree
7	Gymnocladus dioicus 'espresso'	Kentucky Coffee Tree	6' Cal	Good	Parkway Tree
8	Gymnocladus dioicus 'espresso'	Kentucky Coffee Tree	6' Cal	Good	Parkway Tree
9	Picea pungens glauca	Blue Spruce	10' Cal	Good	Parkway Tree



- NOTES:**
1. A TREE PROTECTION AREA SHALL BE ESTABLISHED AROUND A TREE A DISTANCE OF ONE FOOT FOR EACH ONE INCH OF TREE DIAMETER, UP TO A MAXIMUM OF 30 FEET.
 2. PROTECTIVE TREE FENCE SHALL BE INSTALLED AT THE LIMITS OF THE TREE PROTECTION AREA. THE FENCE SHALL BE HIGH ENOUGH SO AS TO BE VISIBLE TO ALL CONSTRUCTION PERSONNEL.
 3. GRADE CHANGES, UTILITY TRENCHES, STORAGE OF CONSTRUCTION MATERIAL, DUMPING OF WASTE, OR OPERATION OR STORAGE OF ANY EQUIPMENT SHALL NOT BE ALLOWED WITHIN THE TREE PROTECTION AREA.
 4. AUGURING IS REQUIRED IF A UTILITY MUST BE INSTALLED WITHIN THE TREE PROTECTION AREA. AUGURED UTILITIES MUST BE A MINIMUM OF 24 INCHES BELOW GRADE.
 5. ALL TREES TO BE SAVED WHICH HAVE BEEN SUBJECTED TO CONSTRUCTION ACTIVITY WITHIN THE TREE PROTECTION AREA SHOULD BE SELECTIVELY THINNED 10% BY AN ARBORIST SKILLED AT THE SELECTIVE THINNING PROCEDURE. NONE OF THE TREES SHALL BE TOPPED, HEADED BACK, SKINNED (REMOVAL OF THE INTERIOR BRANCHES), OR CLIMBED WITH SPIKES. ALL DEAD WOOD SHOULD BE REMOVED TO AVOID HAZARD.
 6. IT IS RECOMMENDED THAT FOLLOWING CONSTRUCTION, TREES BE MAINTAINED IN THEIR NATIVE CONDITION. NO LAWN SHOULD BE PLACED AROUND THE TREES. IT IS RECOMMENDED THAT THE AREA BE MULCHED WITH 2 INCHES OF DECOMPOSED LEAVES AND 2 INCHES OF WOOD CHIPS OR BARK.

City of Naperville STANDARD DETAIL	TREE PROTECTION REVISED: 08/01/2018	LANDSCAPE 10 790.10
	SHEET 1 OF 1	

1 CITY OF NAPERVILLE TREE PROTECTION DETAIL
 Not To Scale 329383-03

**CITY OF NAPERVILLE
 PLAN REVIEW STATUS**

Project Name: 1350 E Ogden Redevelopment
 Project Address: 1350 E Ogden Ave
 Project Number: 18-10000092
 Plan Set Name: Final Landscaping
 Submittal Number: 1

Plan Review Status: **APPROVED**

No further revision to this plan set is required at this time. The conditions of approval are listed in this "Markup Summary" and included in the attached plan set as markups. These conditions shall be followed and completed with at all times.

Please note this approval only reflects the result of staff's technical review. This plan set may be subject to additional review by the Planning and Zoning Commission and final approval by the City Council.

Any future changes to the approved plan set will be subject to City review and approval as a field change. Following construction completion record drawings are required for this project. For future reference, the City's record drawing requirements are outlined in Section 100 (page 12) of the City's Standard Specifications, available online at <http://www.naperville.il.us/standard-specs.aspx>.

Please contact the Project Manager with any questions:
 Kasey Evans, AICP
 keva@naperville.il.us
 630-420-4179

J.U.L.I.E.

Note: The exact location of all utilities shall be verified by the contractor prior to construction activities. For utility locations call: J.U.L.I.E. 1 (800) 892-0123

**ERIKSSON
 ENGINEERING
 ASSOCIATES, LTD.**

135 S JEFFERSON ST, SUITE 135
 CHICAGO, ILLINOIS 60661
 PHONE: (312) 463-0551
 FAX: (847) 223-4864
 EMAIL: INFO@EEA-LTD.COM
 PROFESSIONAL DESIGN FIRM
 LICENSE NO. 184-003220
 EXPIRES: 04/30/2021

**NAPERVILLE
 MICRO-UNIT APARTMENT**

1350 E. Ogden Ave.
 Naperville, Illinois

Reserved for Seal:

Expiration Date: 08/31/2021

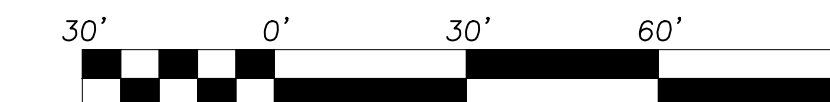
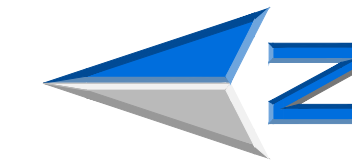
No.	Date	Description
1	07/16/19	Issued For Zoning
2	09/20/19	Issued For Zoning Revisions
	10/11/19	Issued For Zoning Revisions #2
	10/31/19	Issued For Zoning Revisions #3
	11/14/19	Issued For Zoning Revisions #4

© ERIKSSON ENGINEERING ASSOCIATES, LTD., 2019
 THIS PLAN & DESIGN ARE THE PROPERTY OF ERIKSSON ENGINEERING ASSOCIATES, LTD. NO REPRODUCTION OR USE OF THESE PLANS IS PERMITTED WITHOUT THE WRITTEN CONSENT OF ERIKSSON ENGINEERING ASSOCIATES, LTD.

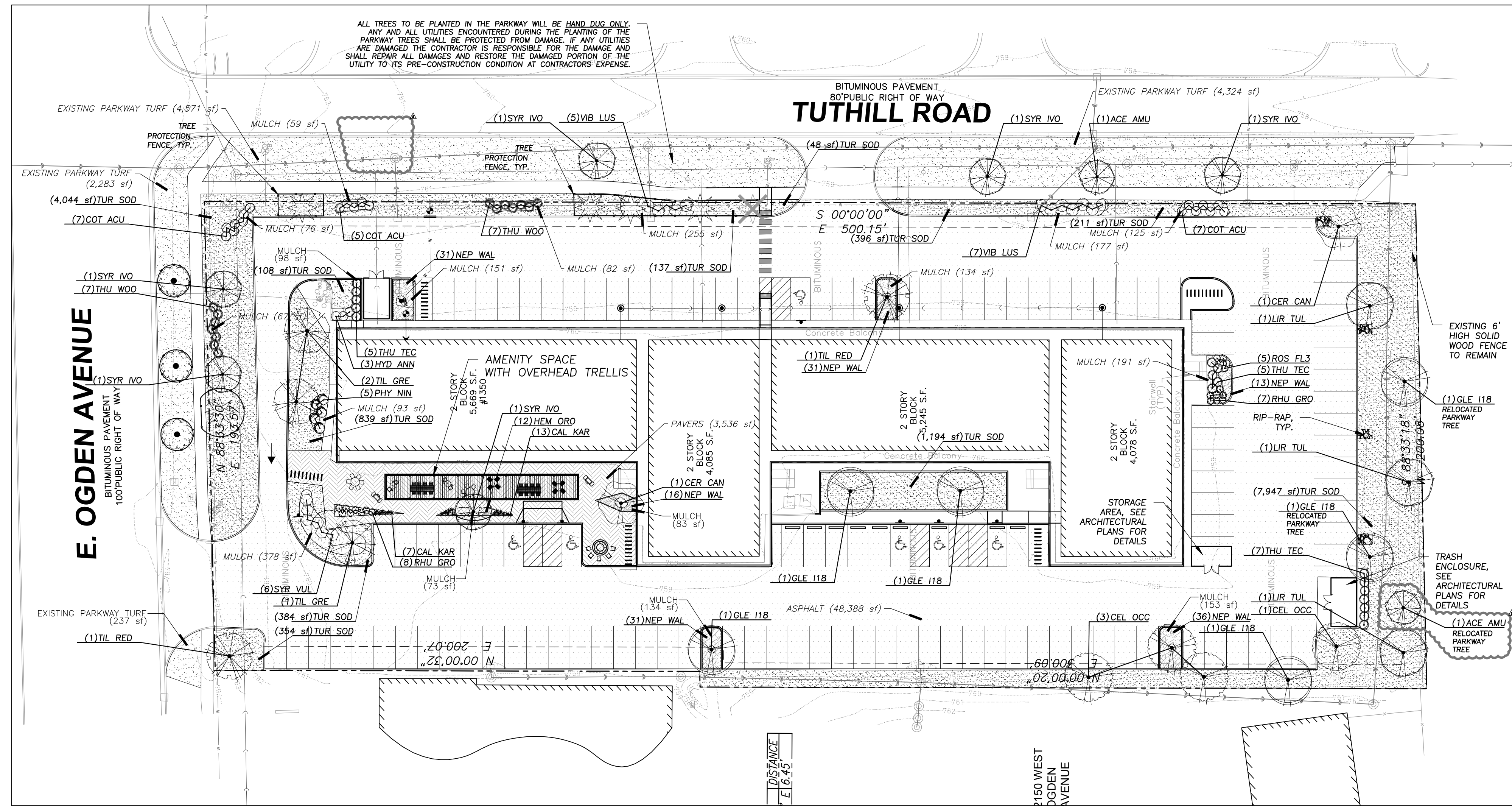
Design By: SSG Date: 07/12/19
 Approved By: SSG Project No. 0000.00

Sheet Title:
**TREE
 PRESERVATION
 PLAN**

Sheet No:
TP100



Scale: 1" = 30'



LANDSCAPE NOTES:

- PLANT QUALITIES SHOWN IN THE PLANT SCHEDULE ARE FOR CONVENIENCE ONLY. THE CONTRACTOR IS RESPONSIBLE FOR PROVIDING AND INSTALLING ALL MATERIALS SHOWN ON THE PLAN AND SHOULD NOT RELY ON THE PLANT SCHEDULE FOR DETERMINING QUALITIES.
- ALL PLANT MATERIALS SHALL BE NURSERY GROWN STOCK AND SHALL BE FREE FROM ANY DEFORMITIES, DISEASES OR INSECT DAMAGE. ANY MATERIALS WITH DAMAGED OR CROOKED/DISFIGURED LEADERS, BARK ABRASION, SUNSCALD, INSECT DAMAGE, ETC. ARE NOT ACCEPTABLE AND WILL BE REJECTED. TREES WITH MULTIPLE LEADERS WILL BE REJECTED UNLESS CALLED OUT IN THE PLANT SCHEDULE AS MULTI-STEM.
- ALL LANDSCAPE IMPROVEMENTS SHALL MEET MUNICIPALITY REQUIREMENTS AND GUIDELINES, WHICH SHALL BE VERIFIED BY MUNICIPAL AUTHORITIES.
- ALL PLANTING OPERATIONS SHALL BE COMPLETED IN ACCORDANCE WITH STANDARD HORTICULTURAL PRACTICES. THIS MAY INCLUDE, BUT NOT BE LIMITED TO, PROPER PLANTING BED AND TREE PIT PREPARATION, PLANTING MIX, PRUNING, STAKING AND GUYING, WRAPPING, SPRAYING, FERTILIZATION, PLANTING AND ADEQUATE MAINTENANCE OF MATERIALS DURING CONSTRUCTION ACTIVITIES.
- ALL PLANT MATERIALS SHALL BE INSPECTED AND APPROVED BY THE LANDSCAPE ARCHITECT PRIOR TO INSTALLATION. ANY MATERIALS INSTALLED WITHOUT APPROVAL MAY BE REJECTED.
- THE CONTRACTOR SHALL GUARANTEE PLANT MATERIALS FOR A PERIOD OF ONE YEAR FROM DATE OF ACCEPTANCE BY OWNER. THE CONTRACTOR SHALL OUTLINE PROPER MAINTENANCE PROCEDURES TO THE OWNER AT THE TIME OF ACCEPTANCE. DURING THE GUARANTEE PERIOD, DEAD OR DISEASED MATERIALS SHALL BE REPLACED AT NO COST TO THE OWNER. AT THE END OF THE GUARANTEE PERIOD THE CONTRACTOR SHALL OBTAIN FINAL ACCEPTANCE FROM THE OWNER.
- ANY EXISTING TREES TO BE RETAINED SHALL BE PROTECTED FROM SOIL COMPACTION AND OTHER DAMAGES THAT MAY OCCUR DURING CONSTRUCTION ACTIVITIES BY ERECTING FENCING AROUND SUCH MATERIALS AT A DISTANCE OF 8.5' FROM THE TRUNK.
- ALL GRASS, CLUMPS, OTHER VEGETATION, DEBRIS, STONES, ETC.. SHALL BE RAKED OR OTHERWISE REMOVED FROM PLANTING AND LAWN AREAS PRIOR TO INITIATION OF INSTALLATION PROCEDURES.
- THE CONTRACTOR SHALL VERIFY THE LOCATIONS OF ALL UNDERGROUND UTILITIES PRIOR TO INITIATING PLANTING OPERATIONS. THE CONTRACTOR SHALL REPAIR/ REPLACE AND UTILITY, PAVING, CURBING, ETC.. WHICH IS DAMAGED DURING PLANTING OPERATIONS.
- SIZE AND GRADING STANDARDS OF PLANT MATERIALS SHALL CONFORM TO THE LATEST EDITION OF ANSI Z60.1, AMERICAN STANDARDS FOR NURSERY STOCK, BY THE AMERICAN NURSERY & LANDSCAPE ASSOCIATION.
- REFER TO PLAT OF SURVEY FOR LEGAL DESCRIPTION, BOUNDARY DIMENSIONS AND EXISTING CONDITIONS.
- ALL PLANT MATERIAL ON THIS PLANTING PLAN REPRESENTS THE INTENTION AND INTENSITY OF THE PROPOSED LANDSCAPE MATERIAL. THE EXACT SPECIES AND LOCATIONS MAY VARY IN THE FIELD DO TO MODIFICATIONS IN THE SITE IMPROVEMENTS AND THE AVAILABILITY OF PLANT MATERIAL AT THE TIME OF INSTALLATION. ANY SUCH CHANGES MUST FIRST BE APPROVED BY THE VILLAGE IN WRITING.
- ALL PLANT MATERIAL SHALL BE PLANTED WITH A MINIMUM OF SIX INCHES OF ORGANIC SOIL AND MULCHED WITH A SHREDDED BARK MATERIAL TO A MINIMUM 3" DEPTH.
- ALL BEDS SHALL BE EDGED, HAVE WEED PREEMERGENTS APPLIED AT THE RECOMMENDED RATE.
- ALL PARKWAYS AND PARKING LOT ISLANDS SHALL HAVE LAWN ESTABLISHED WITH SEED AS A GROUND COVER, UNLESS OTHERWISE NOTED.
- ALL LAWN AREAS ON THIS PLAN SHALL BE GRADED SMOOTH AND TOPPED WITH AT LEAST 4" OF TOPSOIL. ALL LAWN AREAS TO BE ESTABLISHED USING SEED AND BLANKET UNLESS OTHERWISE NOTED. BLANKET TO BE S75 OR APPROVED EQUAL.
- THIS LANDSCAPE PLAN ASSUMES THE SITE WILL BE PREPARED WITH TOP SOIL SUITABLE FOR THE ESTABLISHMENT OF THE LANDSCAPE MATERIAL PRESENTED ON THIS PLAN. IF ADDITIONAL TOP SOIL IS REQUIRED IT IS UP TO THE LANDSCAPE CONTRACTOR ON THE PROJECT TO PROVIDE, SPREAD AND PREPARE THE SITE AS NEEDED FOR THE IMPLEMENTATION OF THIS LANDSCAPE PLAN.
- CONTRACTORS MUST VERIFY ALL QUANTITIES AND OBTAIN ALL PROPER PERMITS AND LICENSES FROM THE PROPER AUTHORITIES.
- ALL MATERIAL MUST MEET INDUSTRY STANDARDS AND THE LANDSCAPE ARCHITECT HAS THE RIGHT TO REFUSE ANY POOR MATERIAL OR WORKMANSHIP.
- LANDSCAPE ARCHITECT IS NOT RESPONSIBLE FOR UNSEEN SITE CONDITIONS.
- ALL PLANTINGS SHALL BE SPACED EQUAL DISTANT, BACK FILLED WITH AMENDED SOIL IN A HOLE TWICE THE ROOTBALL DIAMETER, WATERED, FERTILIZED, PRUNED, AND HAVE ALL TAGS AND ROPES REMOVED.
- TREES SHALL BE STAKED AND GUYED, AND HAVE A WATERING SAUCER AT BASE.
- ALL BEDS TO BE BERMED 12" TO 24" ABOVE GRADE AND MEET DRAINAGE REQUIREMENTS.
- ALL RESTORATION WITHIN THE LIMITS OF THE RIGHT-OF-WAY SHALL BE COMPLETED WITH TOPSOIL AND SOD.
- PROPOSED TREES SHALL BE HORIZONTALLY SEPARATED FIVE (5) FEET OR GREATER FROM EXISTING AND PROPOSED UNDERGROUND SANITARY SEWERS, STORM SEWERS AND WATER MAINS AND TEN (10) FEET OR GREATER FROM EXISTING AND PROPOSED UTILITY STRUCTURES SUCH AS VALVE VAULTS AND FIRE HYDRANTS.
- ALL TREES TO BE PLANTED IN THE PARKWAY WILL BE HAND DUG ONLY. ANY AND ALL UTILITIES ENCOUNTERED DURING THE PLANTING OF THE PARKWAY TREES SHALL BE PROTECTED FROM DAMAGE. IF ANY UTILITIES ARE DAMAGED THE CONTRACTOR IS RESPONSIBLE FOR THE DAMAGE AND SHALL REPAIR ALL DAMAGES AND RESTORE THE DAMAGED PORTION OF THE UTILITY TO ITS PRE-CONSTRUCTION CONDITION AT CONTRACTORS EXPENSE.

PLANT SCHEDULE

CANOPY TREES	BOTANICAL / COMMON NAME	COND	SIZE	QTY
CEL OCC	CELTIS OCCIDENTALIS / COMMON HACKBERRY	B & B	2.5" CAL	4
GLE I18	CLADISIA TRIACANTHOS INERMIS 'SKYLINE' / THORNLESS SKYLINE HONEYLOCUST	B & B	2.5" CAL	6
LIR TUL	LIRIODENDRON TULIPIFERA / TULIP TREE	B & B	2.5" CAL	3
TIL RED	TILIA AMERICANA 'REDMOND' / REDMOND AMERICAN LINDEN	B & B	2.5" CAL	2
TIL GRE	TILIA CORDATA 'GREENSPIRE' / GREENSPIRE LITTLELEAF LINDEN	B & B	2.5" CAL	3
UNDERSTORY TREES	BOTANICAL / COMMON NAME	COND	SIZE	QTY
ACE AMU	ACER GINNALA / AMUR MAPLE	B & B	2" CAL.	2
CER CAN	CERCIS CANADENSIS / EASTERN REDBUD	B & B	2" CAL.	2
SYR IVO	SYRINGA RETICULATA 'IVORY SILK' / IVORY SILK JAPANESE TREE LILAC	B & B	2" CAL.	6
DECIDUOUS SHRUBS	BOTANICAL / COMMON NAME	COND.	SIZE	QTY
COT ACU	COTONEASTER ACUTIFOLIUS / PEKING COTONEASTER	B & B	36" HT.	19
HYD ANN	HYDRANGEA ARBORESCENS 'ANNABELLE' / ANNABELLE SMOOTH HYDRANGEA	B & B	36" HT.	3
PHY NIN	PHYSCARPUS OPULIFOLIUS 'SUMMER WINE' / SUMMER WINE NINEBARK	CONT.	#5	5
RHU GRO	RHUS AROMATICA 'GRO-LOW' / GRO-LOW FRAGRANT SUMAC	B & B	24" SPREAD	15
ROS FL3	ROSA X 'FLOWER CARPET CORAL' / ROSE	B & B	24" SPREAD	5
SYR VUL	SYRINGA VULGARIS / COMMON LILAC	B & B	36" HT.	6
VIB LUS	VIBURNUM DENTATUM 'CHICAGO LUSTER' / CHICAGO LUSTER ARROWWOOD	B & B	36" HT.	12
EVERGREEN SHRUBS	BOTANICAL / COMMON NAME	COND.	SIZE	QTY
THU TEC	THUJA OCCIDENTALIS 'TECHNY' / TECHNY ARBORVITAE	B & B	6' HT.	17
THU WOO	THUJA OCCIDENTALIS 'WOODWARDII' / WOODWARD ARBORVITAE	B & B	30" HT.	14
GRASSES	BOTANICAL / COMMON NAME	COND.	SIZE	QTY
CAL KAR	CALAMAGROSTIS X ACUTIFLORA 'KARL FOERSTER' / FEATHER REED GRASS	CONT.	#1	20
GROUND COVERS	BOTANICAL / COMMON NAME	COND.	SIZE	QTY
HEM ORO	HEMEROCALLIS X 'STELLA DE ORO' / STELLA DE ORO DAYLILY	CONT.	#1	12
NEP WAL	NEPETA X FAASSENII 'WALKERS LOW' / WALKERS LOW CATMINT	CONT.	#1	158
TUR SOD	TURF SOD / DROUGHT TOLERANT FESCUE BLEND	SOD	S.F.	15,663 SF

SITE MATERIALS SCHEDULE

	PAVERS	3,536 SF
	EXISTING PARKWAY TURF	11,416 SF
	MULCH	2,331 SF
	ASPHALT	48,388 SF

EEA - x:\Jeff\LB - 1350 E. Ogden Ave - Naperville\Drawings\Landscapes\Plan.dwg
Plotted: 11/14/19 @ 12:11pm By: sgregory

 135 S JEFFERSON ST, SUITE 135
 CHICAGO, ILLINOIS 60661
 PHONE: (312) 463-0551
 FAX: (847) 223-4864
 EMAIL: INFO@EEA-LTD.COM
 PROFESSIONAL DESIGN FIRM
 LICENSE NO. 184-003220
 EXPIRES: 04/30/2021

NAPERVILLE

MICRO-UNIT APARTMENT

1350 E. Ogden Ave.
Naperville, Illinois

Reserved for Seal:

 Expiration Date: 08/31/2021

No.	Date	Description
1	07/16/19	Issued For Zoning
2	09/20/19	Issued For Zoning Revisions
	10/11/19	Issued For Zoning Revisions #2
	10/31/19	Issued For Zoning Revisions #3
	11/14/19	Issued For Zoning Revisions #4

© ERIKSSON ENGINEERING ASSOCIATES, LTD. 2019
 THIS PLAN & DESIGN ARE THE PROPERTY OF ERIKSSON ENGINEERING ASSOCIATES, LTD.
 NO REPRODUCTION OR PART OR WHOLE IS PERMITTED WITHOUT THE WRITTEN
 CONSENT OF ERIKSSON ENGINEERING ASSOCIATES, LTD.

Design By: SSG Date: 07/12/19
 Approved By: SSG Project No. 0000.00

Sheet Title:

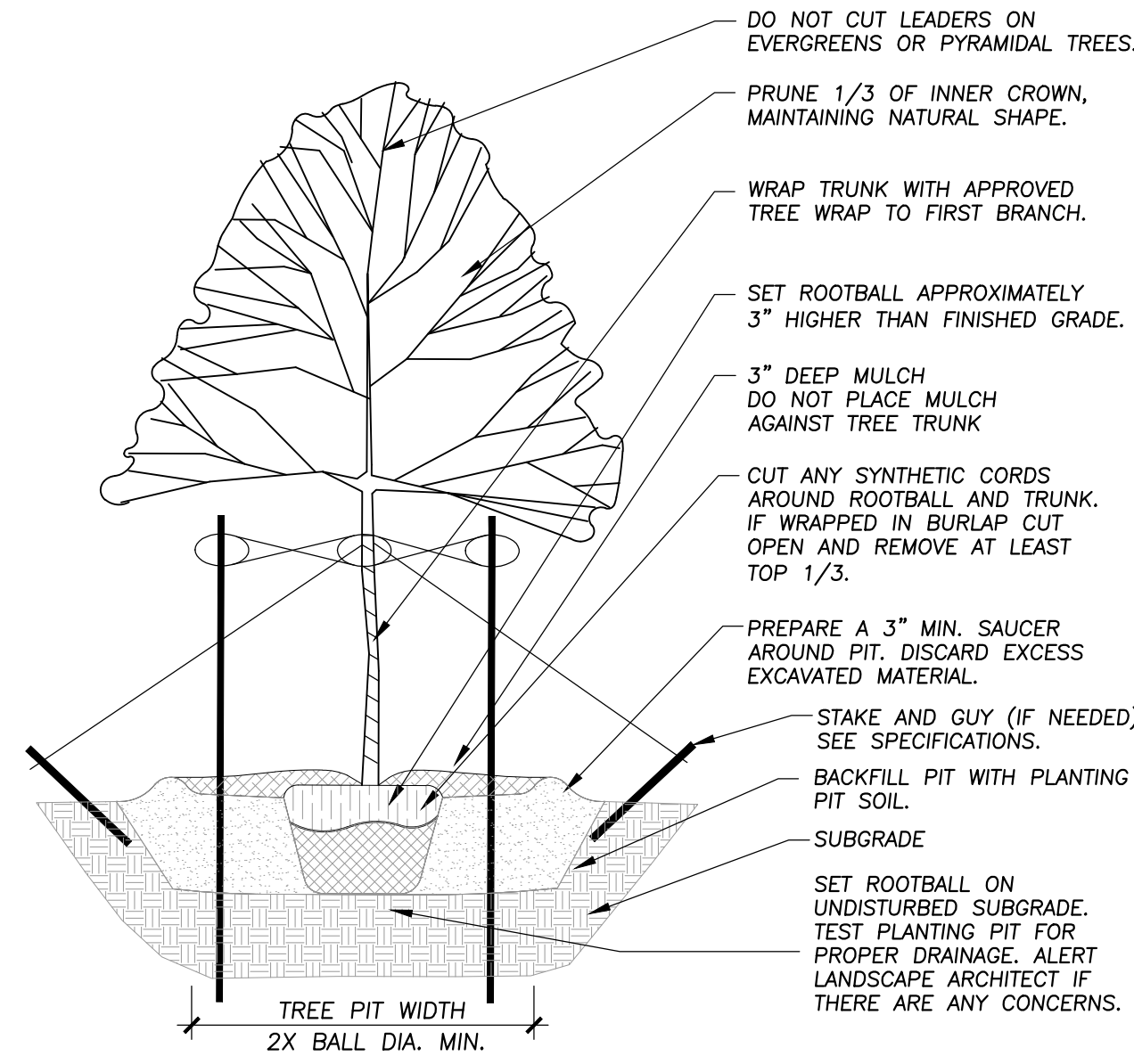
LANDSCAPE PLAN

Sheet No:

L100

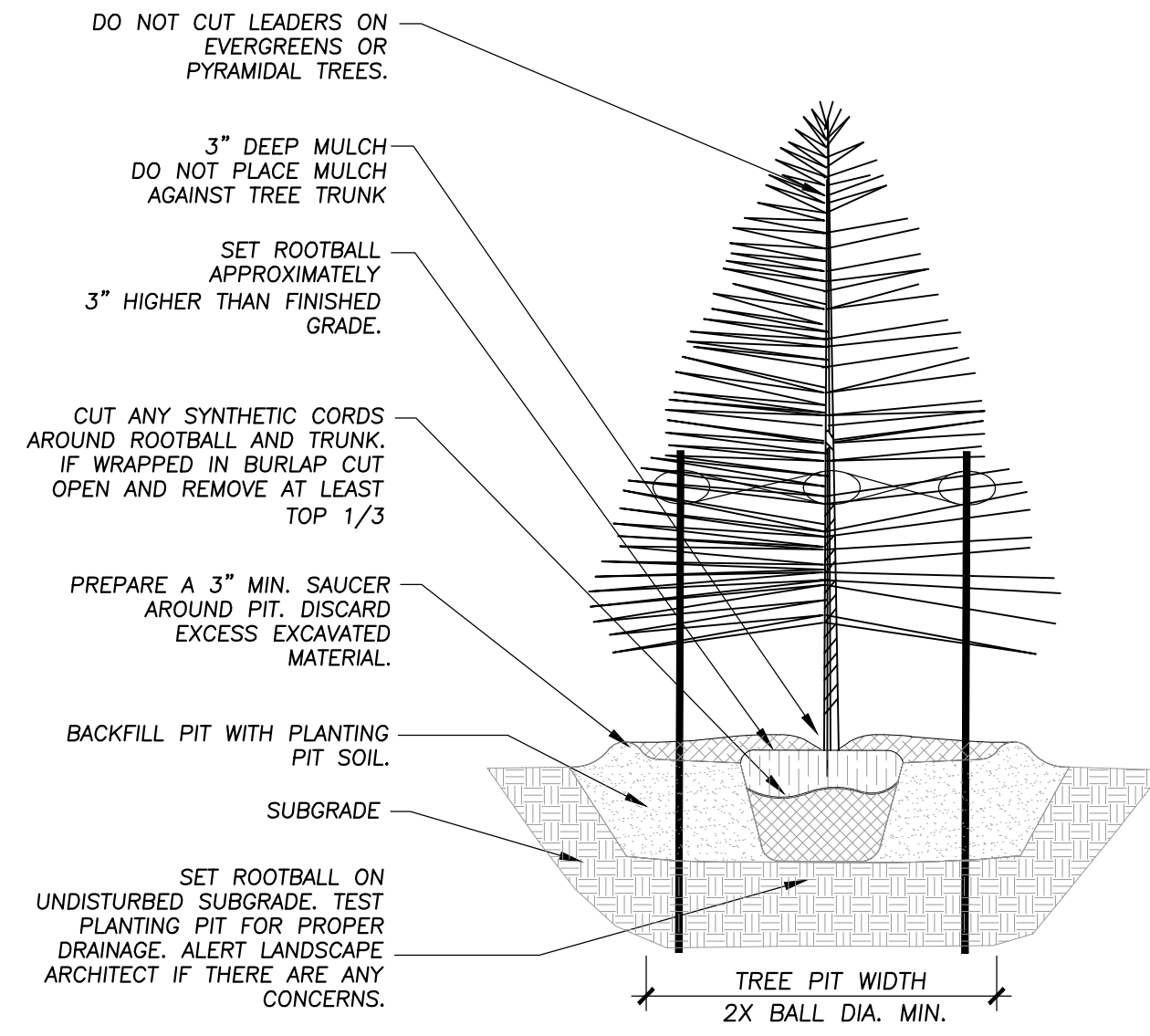
J.U.L.I.E.

Note: The exact location of all utilities shall be verified by the contractor prior to construction activities. For utility locations call: J.U.L.I.E. 1 (800) 892-0123



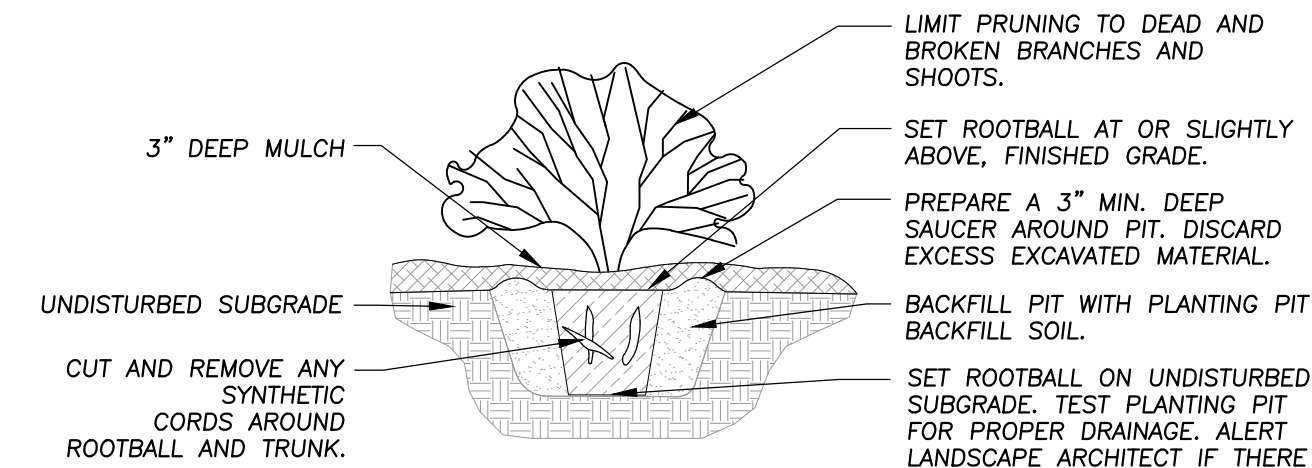
1 TREE PLANTING DETAIL

Not To Scale 329343-01



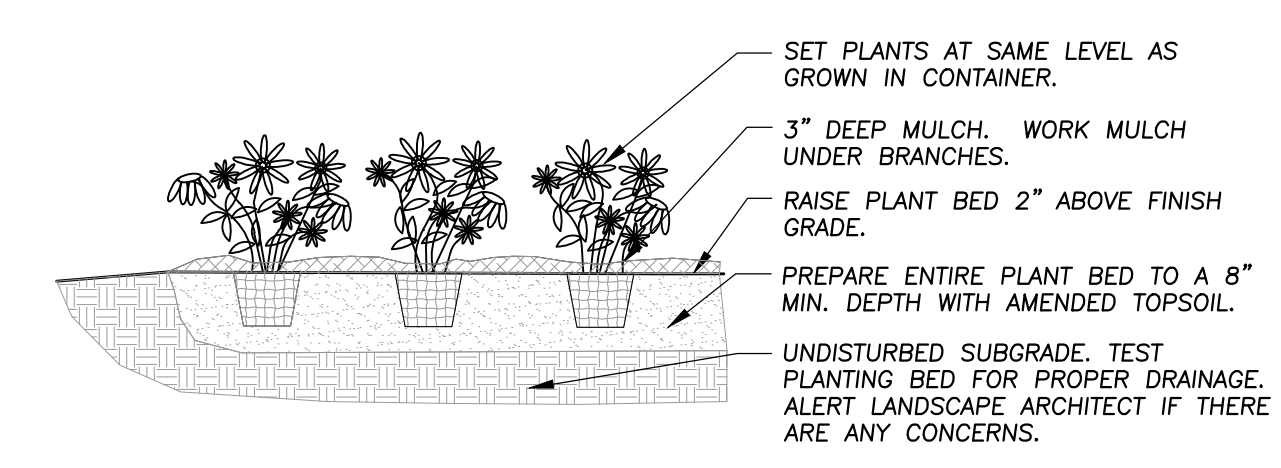
2 EVERGREEN TREE PLANTING DETAIL

NOT TO SCALE 329343-02



3 SHRUB PLANTING DETAIL

Not To Scale 329333-01



4 ANNUAL, PERENNIAL, & GROUNDCOVER DETAIL

Not To Scale 329301-03



ERIKSSON
ENGINEERING
ASSOCIATES, LTD.

135 S JEFFERSON ST, SUITE 135
CHICAGO, ILLINOIS 60661
PHONE: (312) 463-0551
FAX: (477) 223-4864
EMAIL: INFO@EEA-LTD.COM
PROFESSIONAL DESIGN FIRM
LICENSE NO. 184-003220
EXPIRES: 04/30/2021

NAPERVILLE
MICRO-UNIT APARTMENT
1350 E. Ogden Ave.
Naperville, Illinois

Reserved for Seal:



Expiration Date: 08/31/2021

No.	Date	Description
1	07/16/19	Issued For Zoning
2	09/20/19	Issued For Zoning Revisions
	10/11/19	Issued For Zoning Revisions #2
	10/31/19	Issued For Zoning Revisions #3
	11/14/19	Issued For Zoning Revisions #4

© ERIKSSON ENGINEERING ASSOCIATES, LTD. 2019
THIS PLAN & DESIGN ARE THE PROPERTY OF ERIKSSON ENGINEERING ASSOCIATES, LTD.
NO REPRODUCTION OR USE OF ANY PART OF THIS PLAN IS PERMITTED WITHOUT THE WRITTEN
CONSENT OF ERIKSSON ENGINEERING ASSOCIATES, LTD.

Design By: SSG	Date: 07/12/19
Approved By: SSG	Project No. 0000.00

Sheet Title:
LANDSCAPE
DETAILS

Sheet No:
L200

J.U.L.I.E.

Note: The exact location of all utilities shall be verified by the contractor prior to construction activities. For utility locations call: J.U.L.I.E. 1 (800) 892-0123