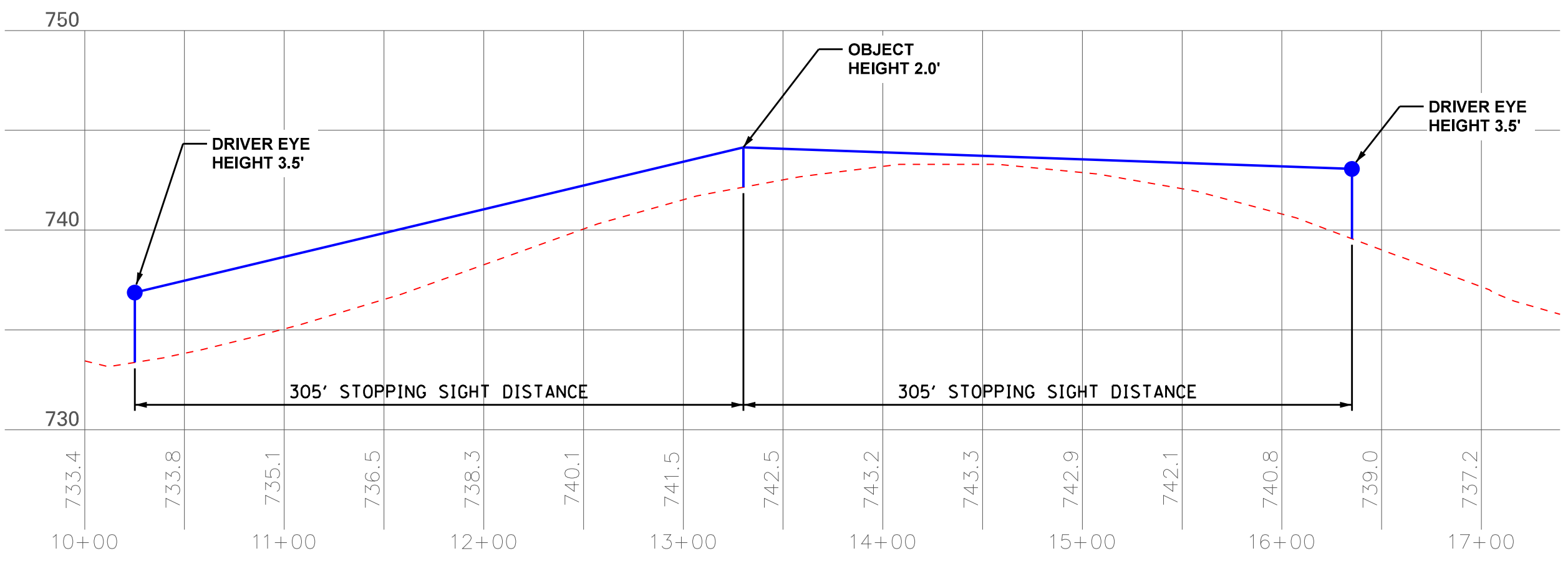
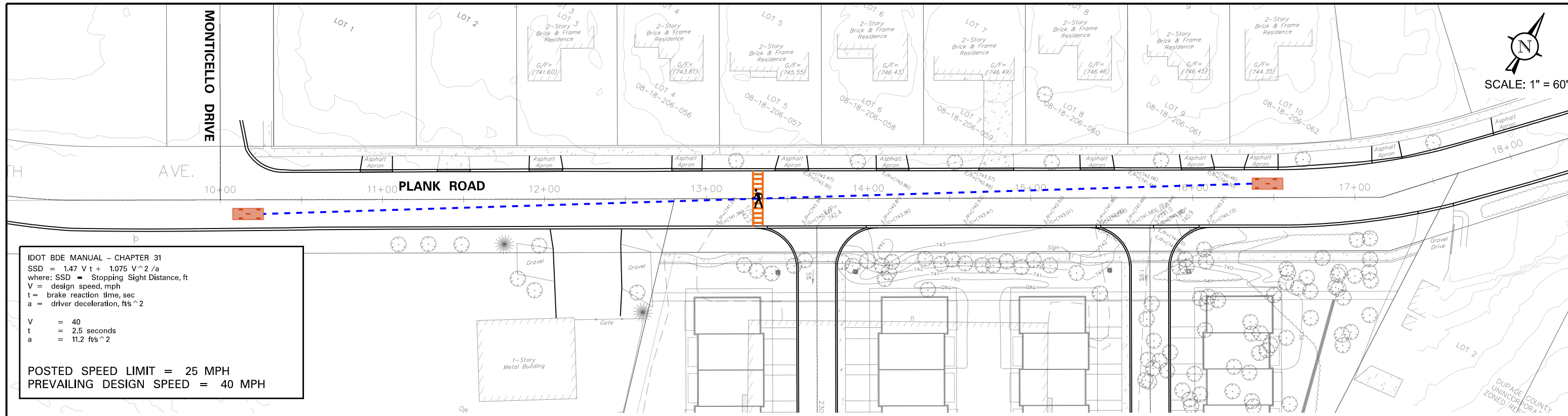
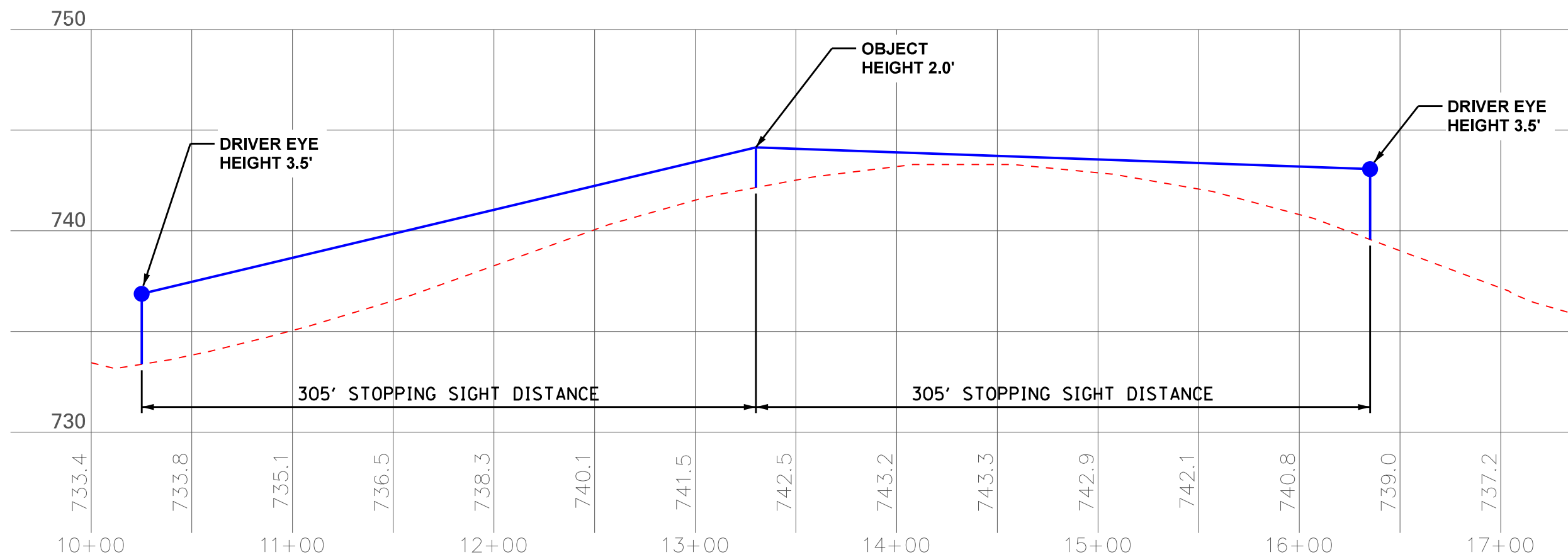


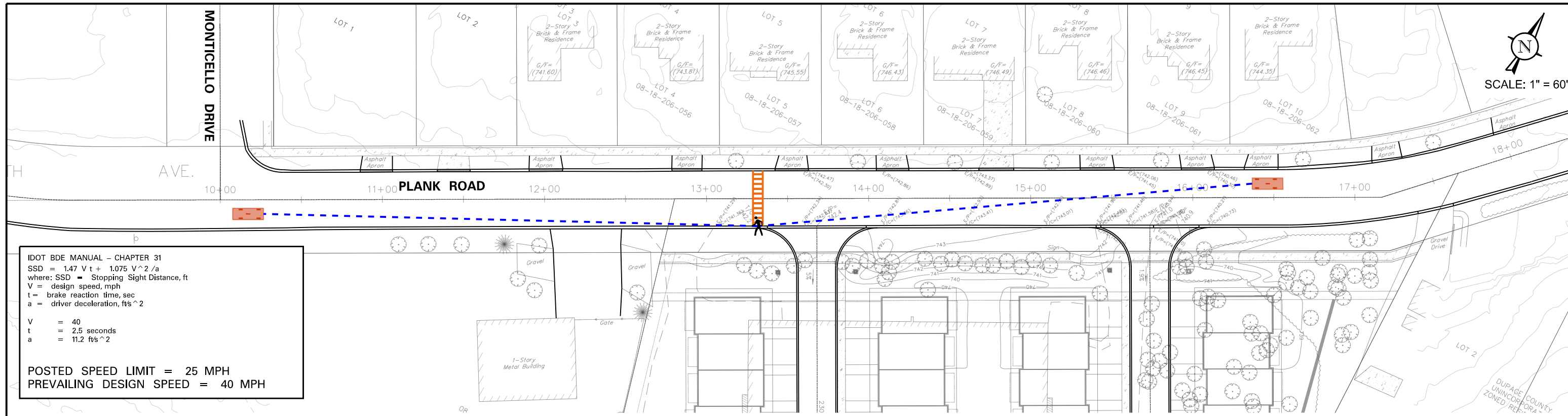
IDOT BDE MANUAL - CHAPTER 31
 $SSD = 1.47 V t + 1.075 V^2 / a$
 where: SSD = Stopping Sight Distance, ft
 V = design speed, mph
 t = brake reaction time, sec
 a = driver deceleration, ft/s^2
 V = 40
 t = 2.5 seconds
 a = $11.2 ft/s^2$
 POSTED SPEED LIMIT = 25 MPH
 PREVAILING DESIGN SPEED = 40 MPH





IDOT BDE MANUAL - CHAPTER 31
 $SSD = 1.47 V t + 1.075 V^2 / a$
 where: SSD = Stopping Sight Distance, ft
 V = design speed, mph
 t = brake reaction time, sec
 a = driver deceleration, ft/s^2
 V = 40
 t = 2.5 seconds
 a = 11.2 ft/s^2
POSTED SPEED LIMIT = 25 MPH
PREVAILING DESIGN SPEED = 40 MPH





IDOT BDE MANUAL - CHAPTER 31
 $SSD = 1.47 V t + 1.075 V^2 / a$
 where: SSD = Stopping Sight Distance, ft
 V = design speed, mph
 t = brake reaction time, sec
 a = driver deceleration, ft/s^2
 V = 40
 t = 2.5 seconds
 a = 11.2 ft/s^2
 POSTED SPEED LIMIT = 25 MPH
 PREVAILING DESIGN SPEED = 40 MPH

